

Social care Trainers' resource

Shortcuts to quality content

care Evidence
training materials
Evidence-based Standards
Person-centred Cur.
Standards
Care Training materials
Quality
Current
Evidence-based Care Sta
Guidance
Standards
Person-centred Guid
Care
Evidence-based
Guidance

“
The reputation
NICE has says it all;
when we refer to
NICE guidance in
our training people
listen and respect it.”

Curve Learning &
Development



NICE produce guidelines and standards for adults' and children's social care. This resource will help you quickly find content for use in your training.



Our guidance

- **Guidelines** – include recommendations for practice
- **Quality standards** – contain statements designed to support quality improvement (can be linked to CQC inspection framework)

Social care quick guides

- Short
- Visually appealing
- Designed for social care audiences
- Ideal for use in staff training
- Free to download and use



Visit www.nice.org.uk/quick-guides to see the full range of quick guides available.

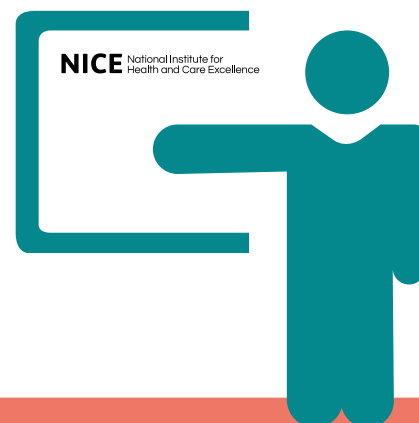
Benefits of including NICE guidance in your training



Quick links – popular topics

The table includes examples of NICE guidance, grouped by popular training topics.

Visit www.nice.org.uk/about/nice-communities/social-care to find the PDF of this resource and use the hyperlinks to take you straight to the recommendations or statements.



Training topics	Examples of relevant guidance
Work in a person-centred way	<ul style="list-style-type: none"> • Adult social care: improving people's experience (guideline NG86) • Older people: independence & mental wellbeing (guideline NG32, quality standard QS137 & QS50)
Privacy & dignity	<ul style="list-style-type: none"> • Adult social care: improving people's experience (guideline NG86) • Decision making & mental capacity (guideline May 2018)
Fluids & nutrition	<ul style="list-style-type: none"> • Nutrition support for adults (guideline CG32, quality standard QS24)
Dementia	<ul style="list-style-type: none"> • Dementia: supporting people with dementia and their carers in health & social care (guideline CG42) • Delirium (guideline CG103, quality standard QS63)
Learning disability	<ul style="list-style-type: none"> • Learning disabilities & behaviour that challenges: service design & delivery (guideline Mar 2018) • Care & support of older people with learning disabilities (guideline Apr 2018) • Mental health problems in people with learning disabilities (guideline NG54, quality standard QS142) • Challenging behaviour & learning disabilities (guideline NG11, quality standard QS101)
Autism	<ul style="list-style-type: none"> • Autism spectrum disorder in adults (guideline CG142) • Autism (quality standard QS51) • Autism spectrum disorder in under 19s (guideline CG170)
Safeguarding	<ul style="list-style-type: none"> • Domestic violence & abuse (guideline PH50, quality standard QS116) • Home care (guideline NG21) • Child abuse & neglect (guideline NG76) • Harmful sexual behaviour among children & young people (guideline NG55) • Looked-after children & young people (guideline PH28, quality standard QS31)
Medicines management / health related activity	<ul style="list-style-type: none"> • Managing medicines in care homes (guideline SC1, quality standard QS85) • Managing medicines for adults receiving social care in the community (guideline NG67) • Oral health for adults in care homes (guideline NG48, quality standard QS151) • Pressure ulcers (guideline CG179, quality standard QS89)
Healthy workplaces	<ul style="list-style-type: none"> • Workplace health: management practices (guideline NG13, quality standard QS147)
Infection prevention & control	<ul style="list-style-type: none"> • Healthcare-associated infections: prevention & control in primary & community care (guideline CG139, quality standard QS61)



Website shortcuts

Use our 'Pathways' function to quickly see all our guidance on a subject area. Look for the Pathways tab at the top of the homepage.

Example – mental health content:

- Step 1** – Content for mental health training can be found by clicking on 'M'.
- Step 2** – Scroll through the list of subject areas on the right and click on the subject area of interest.
- Step 3** – Click on the 'Resources' tab for a list of guideline and quality standard titles.
- Step 4** – Each title is hyper linked to take you to the guidance (which will open in a new window).



Quality and CQC inspections

NICE Quality improvement resource: adult social care

Find individual quality statements and medicines recommendations mapped against CQC adult social care framework key lines of enquiry.

www.nice.org.uk/social-care-quality-improvement-resource



Keep plugged in

Sign up for our free monthly e-bulletin 'NICE in Social Care' for quick links to relevant new guidance and quick guides.

Visit our website to sign up:

www.nice.org.uk/social-care-newsletter

Contact us on:

socialcare@nice.org.uk

We would love to hear your feedback about our guidance and resources in relation to your work.



NICE NICE Pathways NICE Guidance Standards and indicators Evidence services Sign in

Search NICE's interactive flowcharts ... Leave feedback

Everything NICE says on a topic in an interactive flowchart

Use this tool to find our guidance and advice for health and social care.

A-Z Topics Latest

A B C D E F
G H I J K L
M N O P Q R
S T U V W X
Y Z

2 Menopause
Menorrhagia (see heavy menstrual bleeding)
Mental health disorders (common) in primary care
Mental health problems in people with learning disabilities
Mental health services, adult service user experience
Mental health, antenatal and postnatal
Mental illness (severe) and substance misuse, coexisting (see coexisting severe mental illness and substance misuse: community health and social care services)
Mental wellbeing and independence in older people
Mental wellbeing at work
Metabolic conditions (see endocrine, nutritional and metabolic conditions)
Metastatic malignant disease of unknown primary origin
Metastatic spinal cord compression
Migraine (see headaches)
Miscarriage and ectopic pregnancy

NICE NICE Pathways NICE Guidance Standards and indicators Evidence services Sign in

Search NICE's interactive flowcharts ... Help Leave feedback Recently viewed Browse

Common mental health disorders in primary care overview

Common mental health disorders in primary care - everything NICE says in an interactive flowchart

About Resources Information for the public Quality standards

4 NICE has produced resources to help implement its guidance on:
Common mental health disorders: identification and pathways to care
Anxiety disorders
Mental wellbeing of older people in care homes
Depression in adults

NICE National Institute for Health and Care Excellence
NICE in Social Care

November 2017

Publications
Intermediate care including reablement - quick guide (available now)

Kath Sutherland-Cash, FRSA
Equalities Consultant and Founder of Start Ability Services

As a lay member on the committee that developed the intermediate care guideline and expert advisor for the new quick guide, Kath shares her view on the importance of raising awareness about intermediate care services.

Effective intermediate care services ensure that people are supported to learn safe strategies to regain their confidence in performing daily living tasks. In this way, they can remain in their own homes, if they wish to do so. This is central to the avoidance of costly interventions or unwanted residential placements. And most importantly, it is far less distressing and disempowering for the individual and their families.