

Dudley

1 CCG
3 NHS trusts
1 Local authority

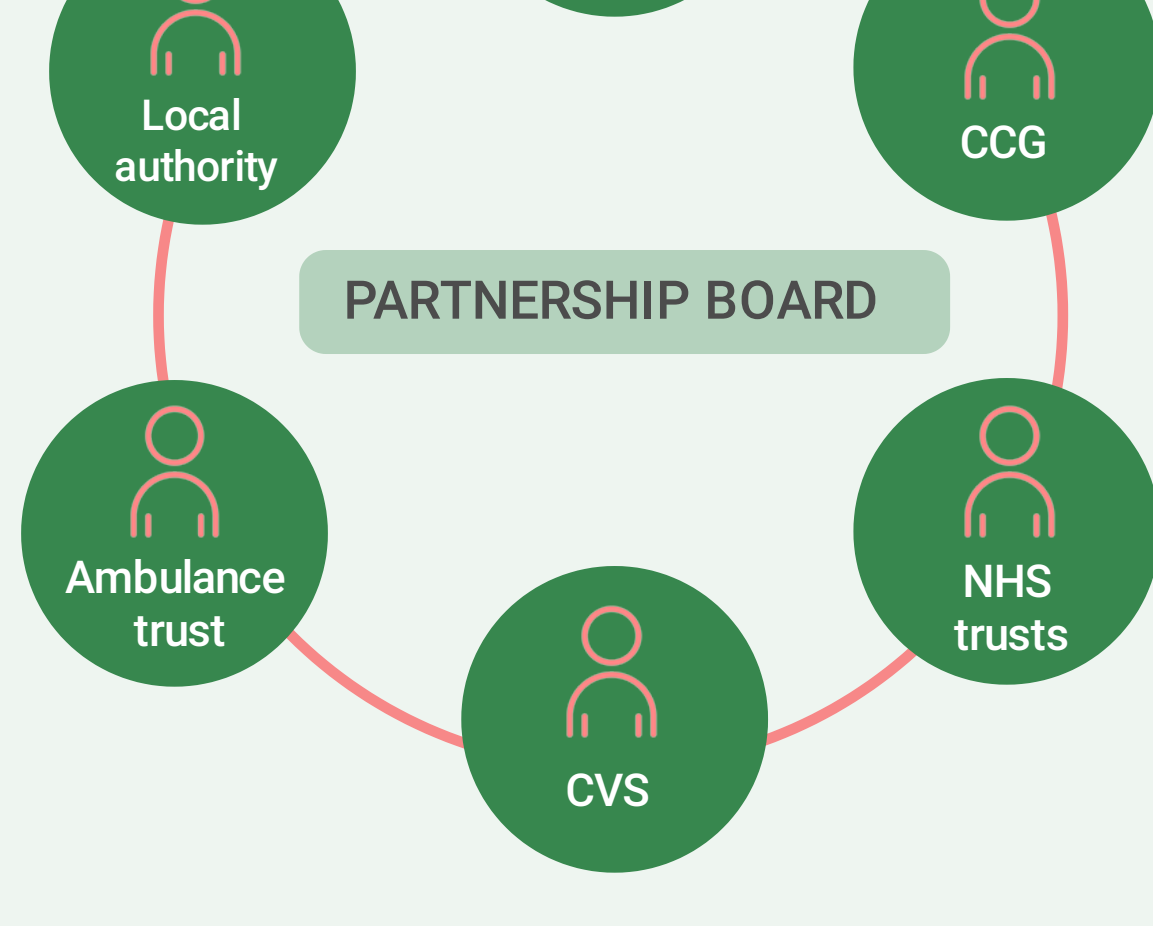


A new model of care

Dudley was selected as a national vanguard, testing out a new collaborative model of care.

Dudley believes that the best way to promote wellbeing is for the whole system, including communities, to work together. It also believes in the power of action.

Dudley's **Partnership Board** oversees the development of the new model of care and includes executive leaders from a range of organisations.



The Dudley approach was underpinned by a **significant investment in relationship management** across partner organisations.

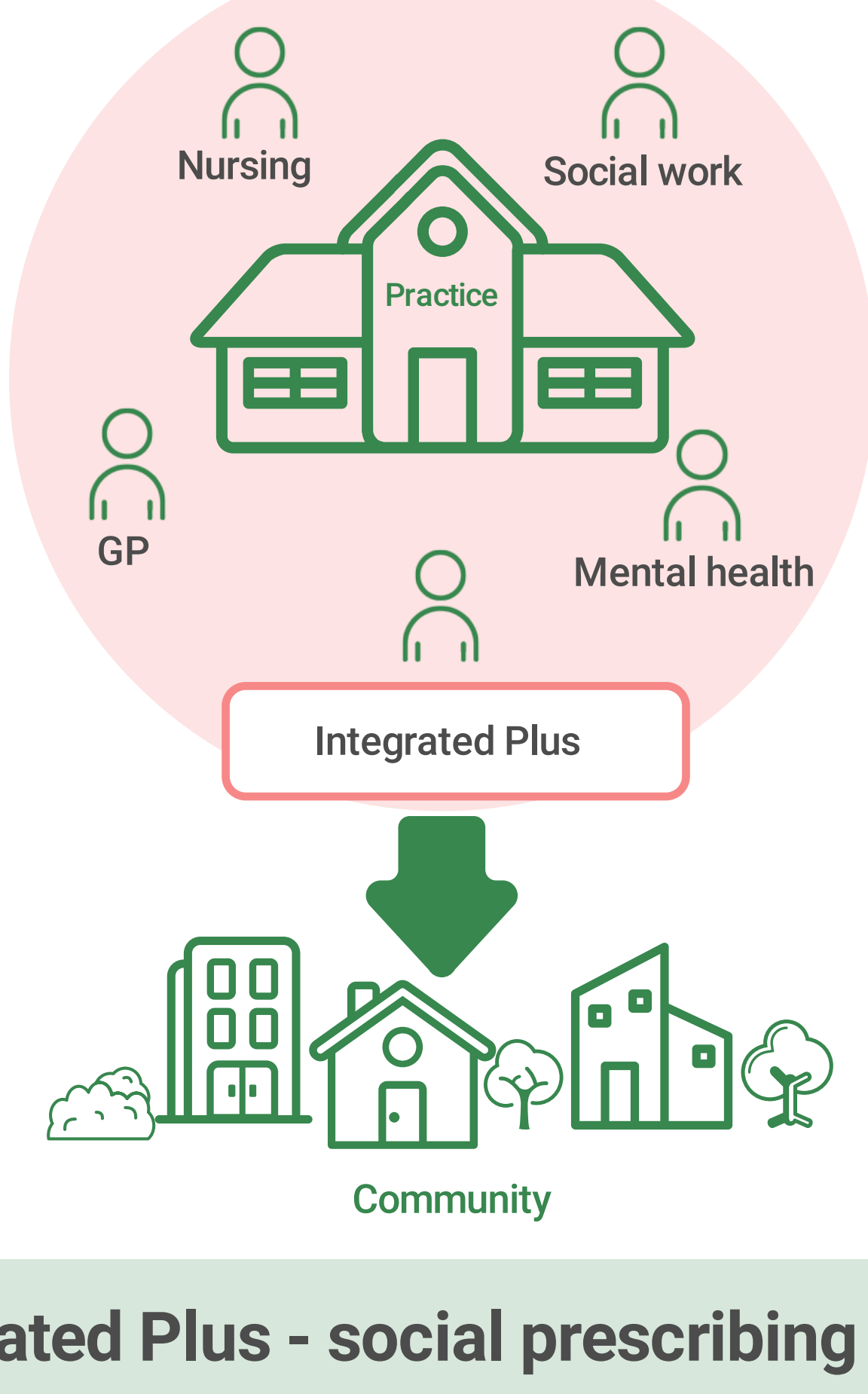
Senior NHS and local authority leaders are signed up to:

- invest in relationships
- a shift towards services which prevent the need for additional health and social care support.

Dudley's multi-disciplinary teams

As a Vanguard area, Dudley introduced a **multi-disciplinary team (MDT) model in all 44 GP practices**. MDTs consist of GP, nursing, social work, mental health and Integrated Plus representation.

Each part of the system shares expertise and agrees on action to support working age and older adults who are frequent attendees in GP practices, or at high risk of admission to hospital.



Integrated Plus - social prescribing

Following a proposal from the local Community and Voluntary Service (CVS), Dudley CCG funded a new social prescribing service 'Integrated Plus', to form a key part of the MDTs.

Integrated Plus link workers have a good knowledge of local community assets. Along with wider social prescribing, they know how to access:



Food



Benefits



Housing

The main reasons for referral to Integrated Plus are **social isolation, long-term conditions and mental health issues**.

Airtime

Integrated Plus link workers have helped establish new peer support networks in response to local need.

One example is Airtime, a weekly peer support group for people with respiratory conditions including COPD.

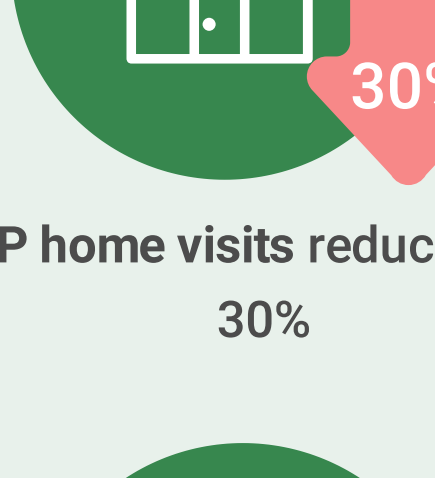
This has run for 2 years and has helped many people to become less isolated and to reduce levels of anxiety linked to their respiratory condition.



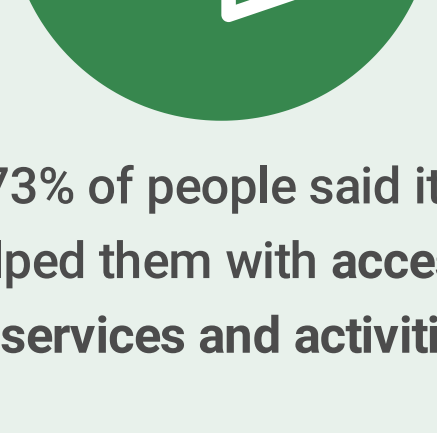
Outcomes of Integrated Plus



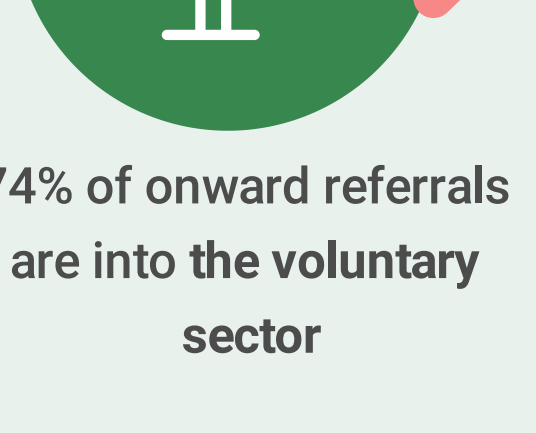
GP in-surgery consultations reduced by 29%



GP home visits reduced by 30%



73% of people said it helped them with access to services and activities



74% of onward referrals are into the voluntary sector

"I feel safer now, really secure...although my GP had tried to help I was getting nowhere...(my link worker) has made me aware of places I didn't even know existed."

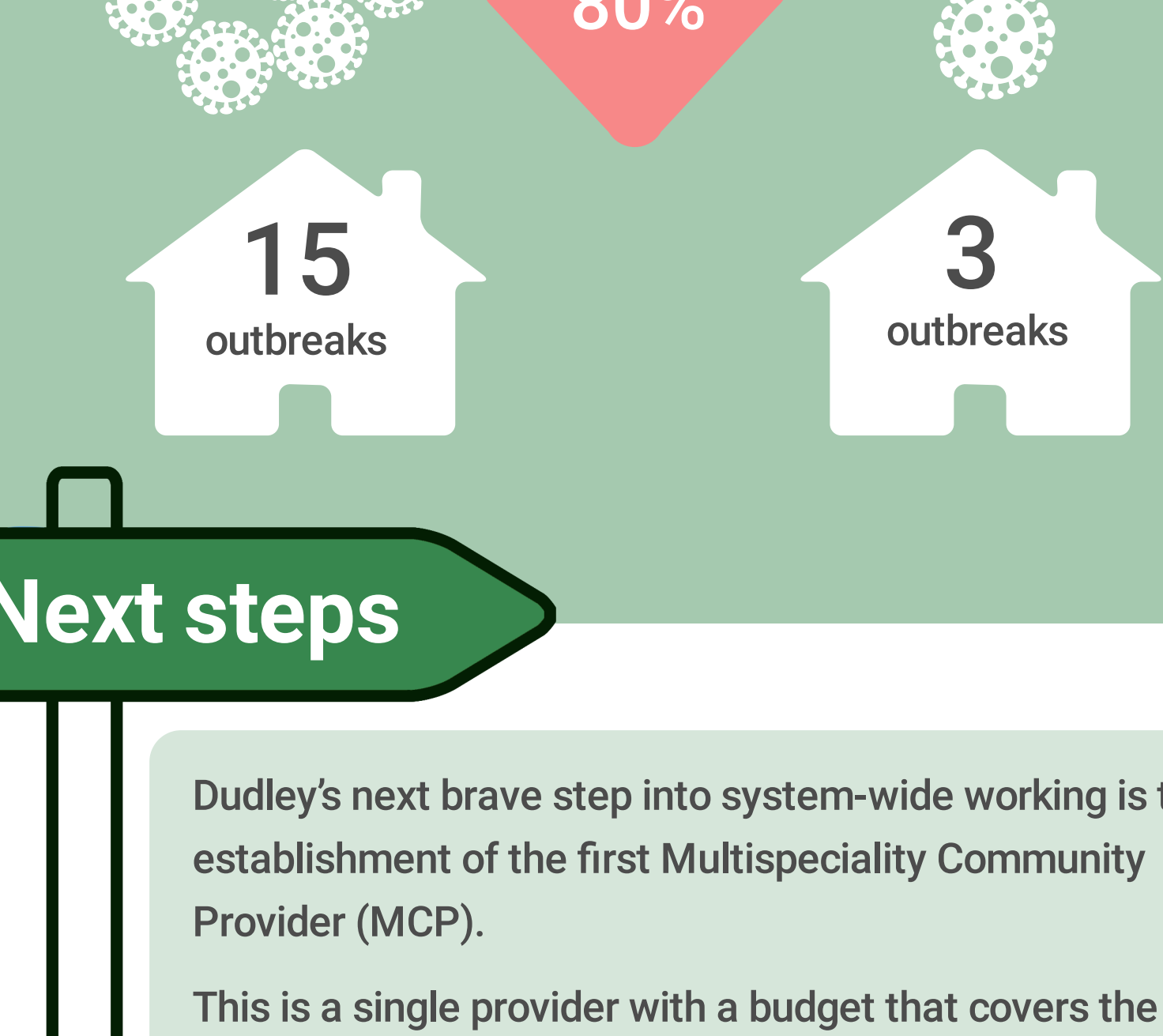
Person supported by Integrated Plus.

Other joint prevention-focused ideas

Vaccinations for care home staff

Dudley local authority and health organisations worked with care home providers and invested winter pressures money into flu vaccinations for care home staff.

Last winter, flu outbreaks in local care homes reduced by 80%.



Next steps

Dudley's next brave step into system-wide working is the establishment of the first Multispeciality Community Provider (MCP).

This is a single provider with a budget that covers the whole population for primary care, community health, mental health and some public health services.

Dudley is also reviewing their Partnership Board membership to ensure they have representation across the whole system.

Find out more about collaborative working

Website: www.dudleyccg.nhs.uk

Email: sophie.sirrell@nhs.net