

Executive update

March 2023

Summary

This update, accompanying the Integrated Performance Report (IPR), includes significant recent activity not included in the integrated performance report.

These updates comprise the final executive update of 2022/23 and summarises how in recent activity or on aggregate over the past year we have:

- Focussed on what matters most
- Created useful and useable advice
- Learned from data and implementation

Three specific recent initiatives are highlighted: our innovations to enable continuous review of our COVID-19 guidance, an example of our Real World Evidence Framework in guidance development, and our recent resource for the health and care systems in support of productivity and recovery.

We have focused on what matters most

By working with system partners to identify where NICE advice can make the biggest difference and focusing our efforts there.



Recommended 3 drugs for over 1 million people at highest risk of severe Covid-19



Recommended 4 digital health technologies to help over 1 million children and young people with anxiety/low mood



Launched new payment model leading to first new antimicrobials in a decade



Published web tools on using NICE to help ↓ health inequalities and ↑ productivity

We have created useful and usable advice

We're ensuring our guidance is timely, easy to find and in an accessible format – getting the right information, to the right people, at the right time.



Applied light-touch, faster evaluations to low risk treatments: enabling up to 176K people to benefit from 5 drugs recommended ~10 weeks faster than normal



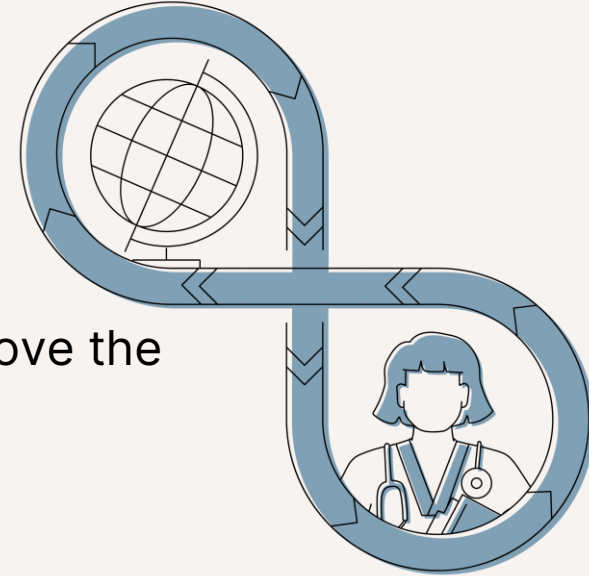
Piloted 7 'early value assessments': fast-tracking patient access to promising innovations twice as fast as normal. Including a genetic test to prevent newborn babies going deaf.



More frequently and more quickly updated priority guideline recommendations in topics including obstetrics and diabetes

We are part of a system that continually learns from data and implementation

We are continually collecting and using real world data to actively shape and improve the health and care system.



Evidence Standards Framework viewed over 25K times by users from UK, USA, Australia, Germany and worldwide



Real World Evidence Framework viewed over 20K times and used by company to submit evidence on recommended lung cancer drug mobocertinib



We've developed new international collaborations on health technology assessment



Over 100 treatments funded via the Cancer Drugs Fund, allowing real world data to be gathered on their efficacy whilst giving patients access

Spotlight on COVID-19 ongoing guidance review

- COVID-19 presents particular challenges for clinical and cost-effectiveness analysis due to the emergence of new variants with different characteristics and responses to existing treatments.
- To address this problem, alongside our final draft guidance for three COVID-19 treatments, we have adopted two innovative approaches:
 - Creation of an expert group to develop a framework for the committee to **interpret and use *in vitro* data in decision-making**. This enabled NICE to recommend sotrovimab for people who can't take Paxlovid, addressing a major unmet need for patients
 - Developing a system of **ongoing review of evidence to continually reappraise the clinical and cost effectiveness of available treatments**, based on the continuous surveillance undertaken for our guideline programme. Our guideline and technology appraisal teams will work jointly to assess triggers for a review and rapidly update recommendations, with the aim of publishing revised recommendations in as little as 8 weeks from a review being triggered.









Spotlight on the use of our Real World Evidence Framework

- Our [Real World Evidence Framework](#) has been viewed more than 20,000 times since it was launched in June 2022, providing useful and useable information about the use of RWE to inform NICE guidance. We are now seeing the **impacts of the framework in helping evidence developers** to collect high quality real world evidence to inform our guidance.
- In January 2023 mobocertinib, a targeted treatment for a rare form of aggressive lung cancer, obtained **NICE approval after the company used the RWE Framework to submit evidence** to the NICE committee.
- NICE [recommended mobocertinib](#) as an option for treating locally advanced or metastatic non-small-cell lung cancer (NSCLC) after platinum-based chemotherapy in adults whose tumours have epidermal growth factor receptor (EGFR) exon 20 insertion mutations.
- It is the only precision drug available to patients with a mutation-driven, advanced form of lung cancer, who have already received chemotherapy and will benefit more than 100 people in the UK.

Spotlight on supporting NHS recovery and productivity

- Recovering core services and improving productivity is an immediate priority for the NHS. To help with this, we've pulled together our relevant guidance and recommendations supporting this work into one place.
- We've matched relevant NICE guidance and recommendations to areas of improving productivity and recovering core services, and mapped these to each of the 2023/24 priorities and operational planning guidance and priority areas of the NHS Long Term Plan.
- This [resource is now available on the NICE website](#) and will be periodically reviewed to include the latest guidance or to reflect new NHS priorities.

NHS productivity objectives for 2023/24

 Urgent and emergency care View/hide related guidance and recommendations	 Community health services View/hide related guidance and recommendations	 Primary care View/hide related guidance and recommendations
 Elective care View/hide related guidance and recommendations	 Cancer View/hide related guidance and recommendations	 Diagnostics View/hide related guidance and recommendations
 Maternity View/hide related guidance and recommendations	 Use of resources View/hide related guidance and recommendations	