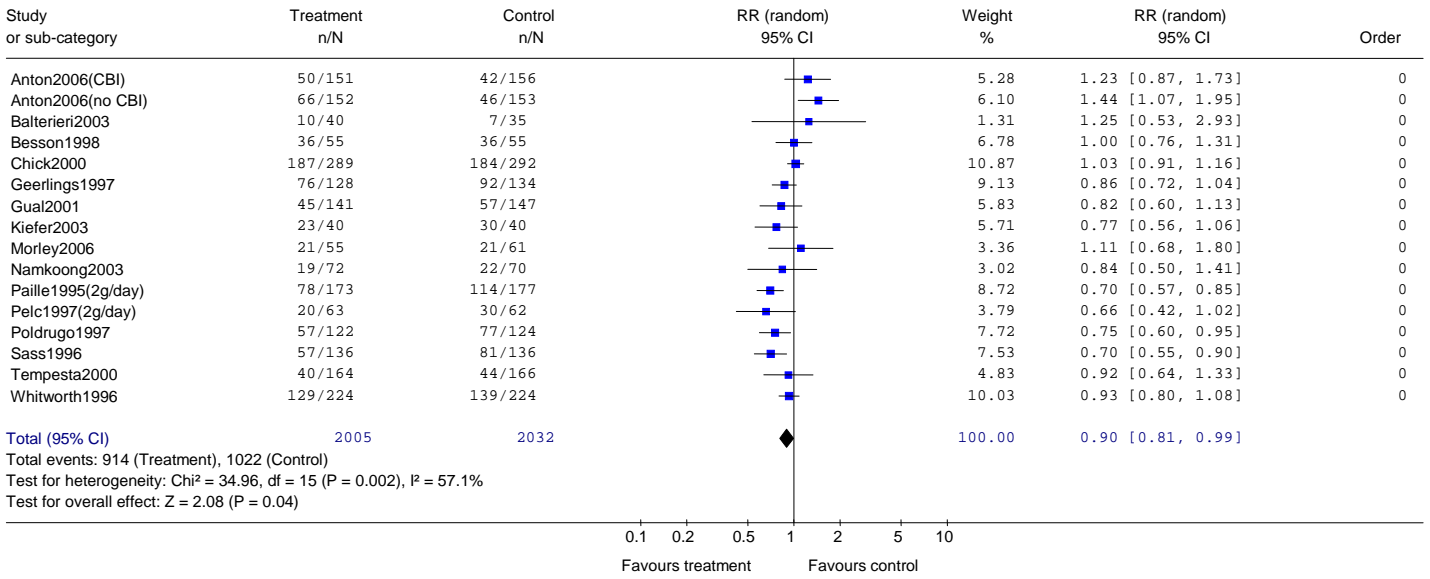


Alcohol Use Disorders: Pharmacology forest plots

1 Acamprosate for alcohol use disorders

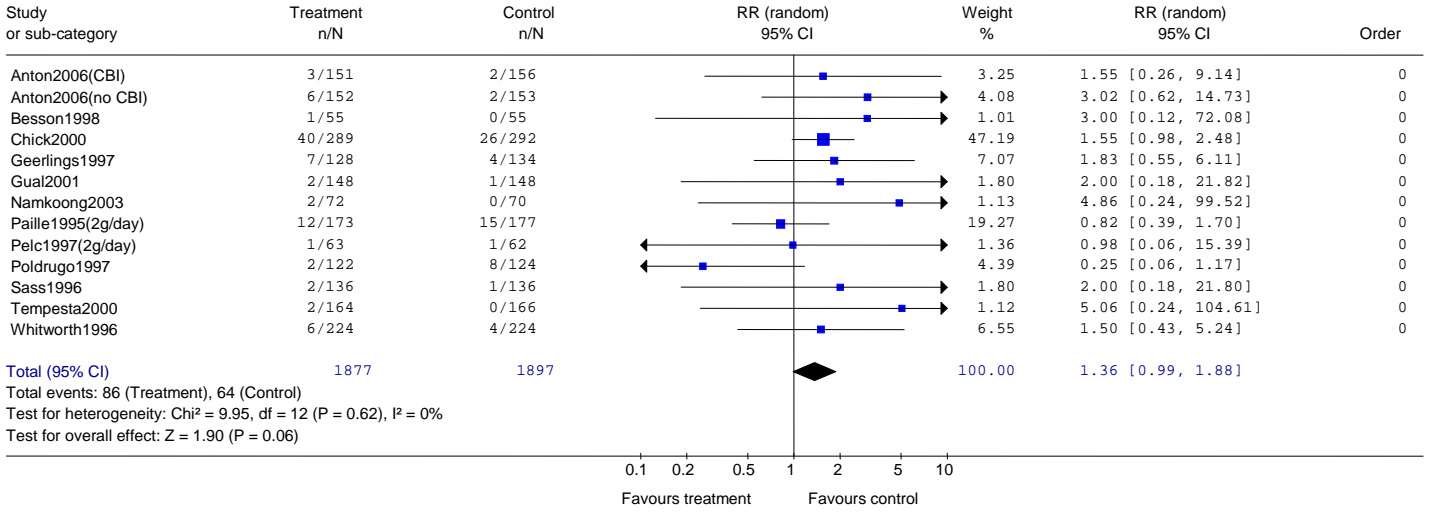
1.1 Acamprosate versus Placebo

Comparison: 01 Acamprosate versus placebo
 Outcome: 01 Discontinued treatment (Leaving study early)

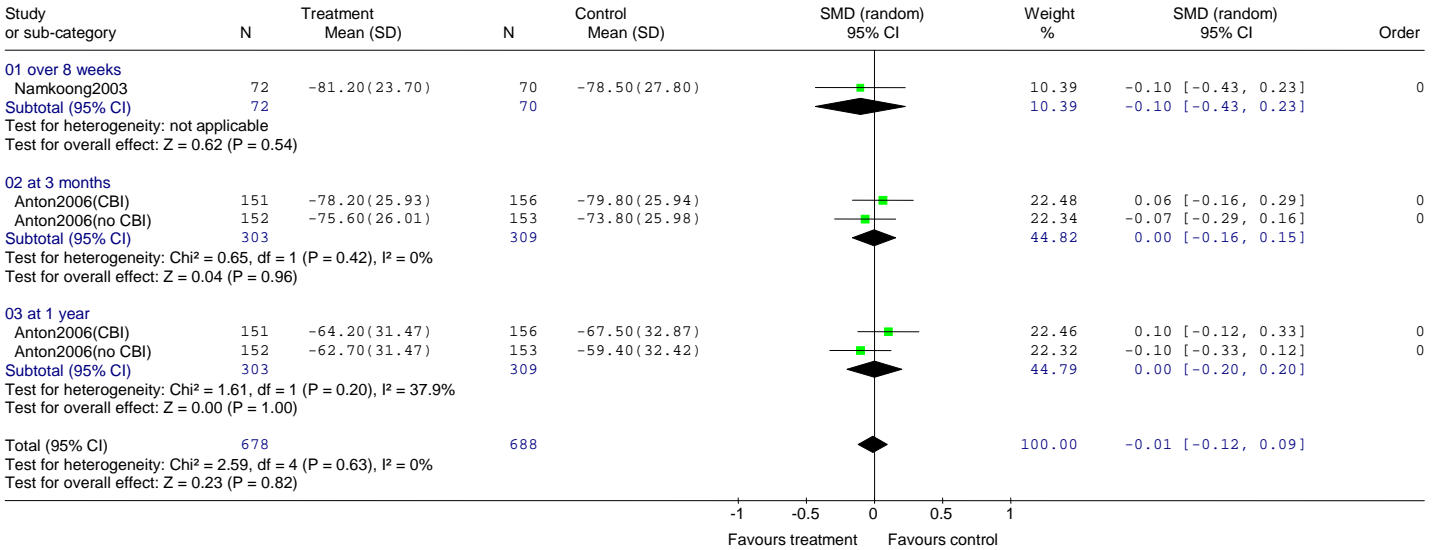


Alcohol Use Disorders: Pharmacology forest plots

Comparison: 01 Acamprosate versus placebo
 Outcome: 02 Leaving due to adverse event

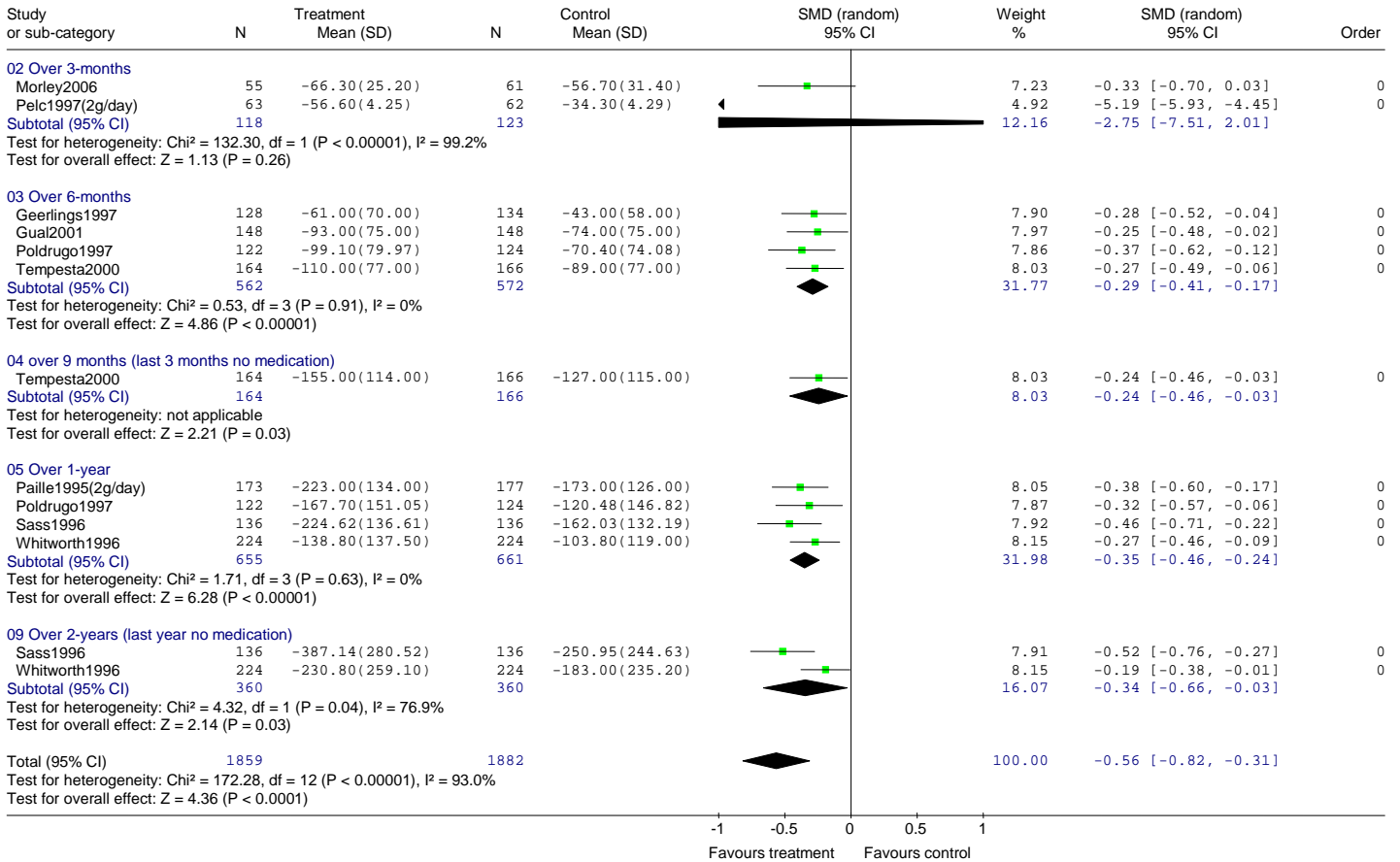


Comparison: 01 Acamprosate versus placebo
 Outcome: 03 % days abstinent



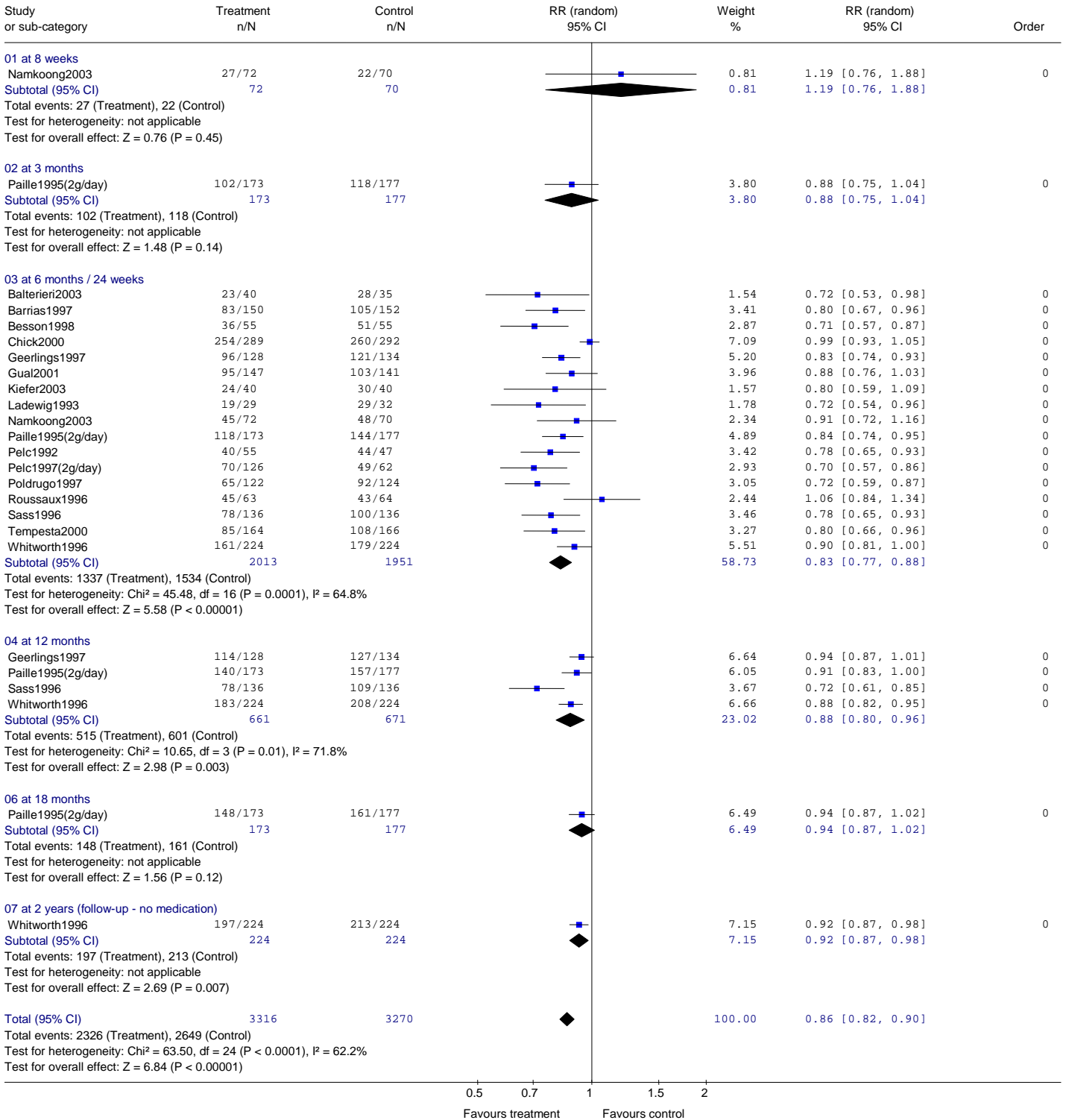
Alcohol Use Disorders: Pharmacology forest plots

Comparison: 01 Acamprosate versus placebo
 Outcome: 06 Cumulative abstinence duration (all in)



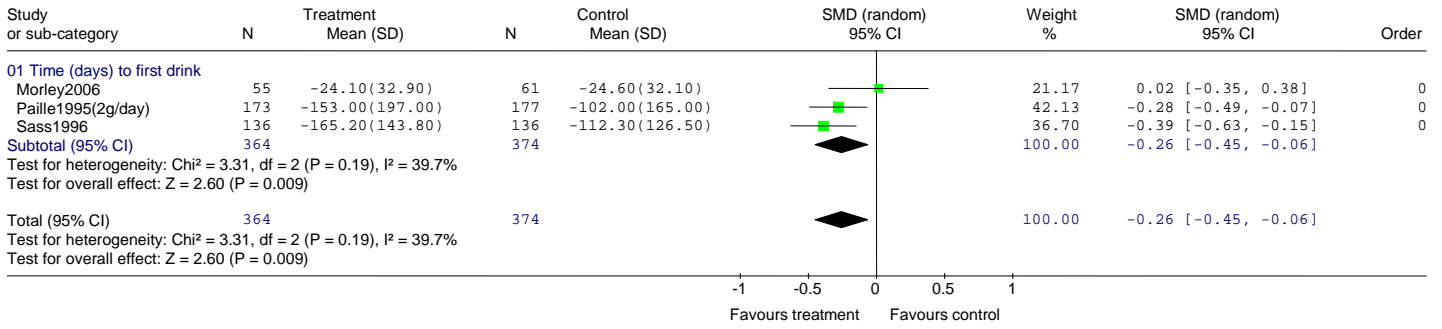
Alcohol Use Disorders: Pharmacology forest plots

Comparison: 01 Acamprosate versus placebo
 Outcome: 07 Lapsed (individuals drinking any alcohol/ non-abstinent)

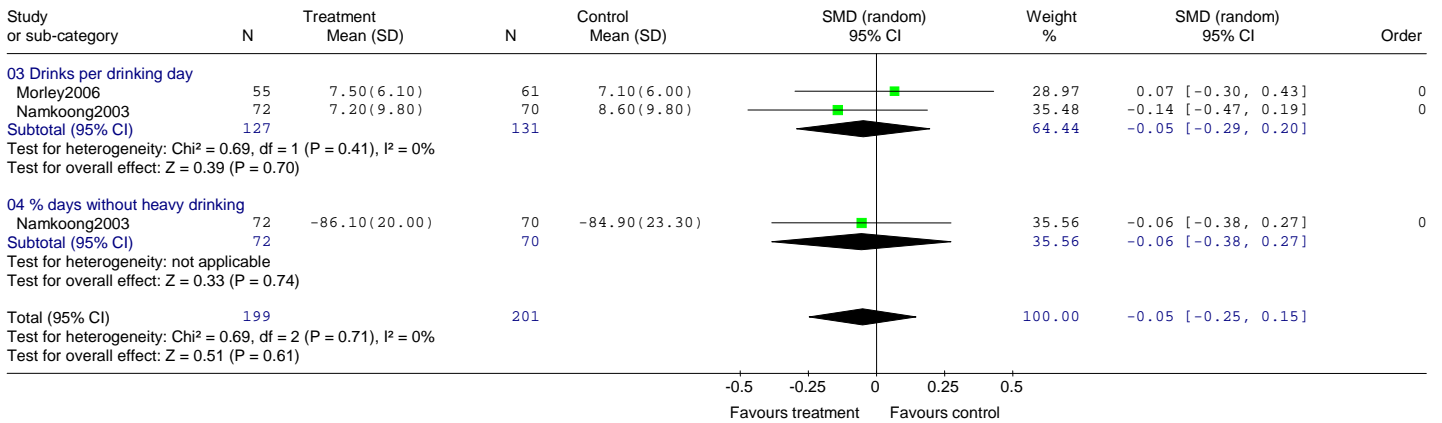


Alcohol Use Disorders: Pharmacology forest plots

Comparison: 01 Acamprosate versus placebo
 Outcome: 08 Time to first drink

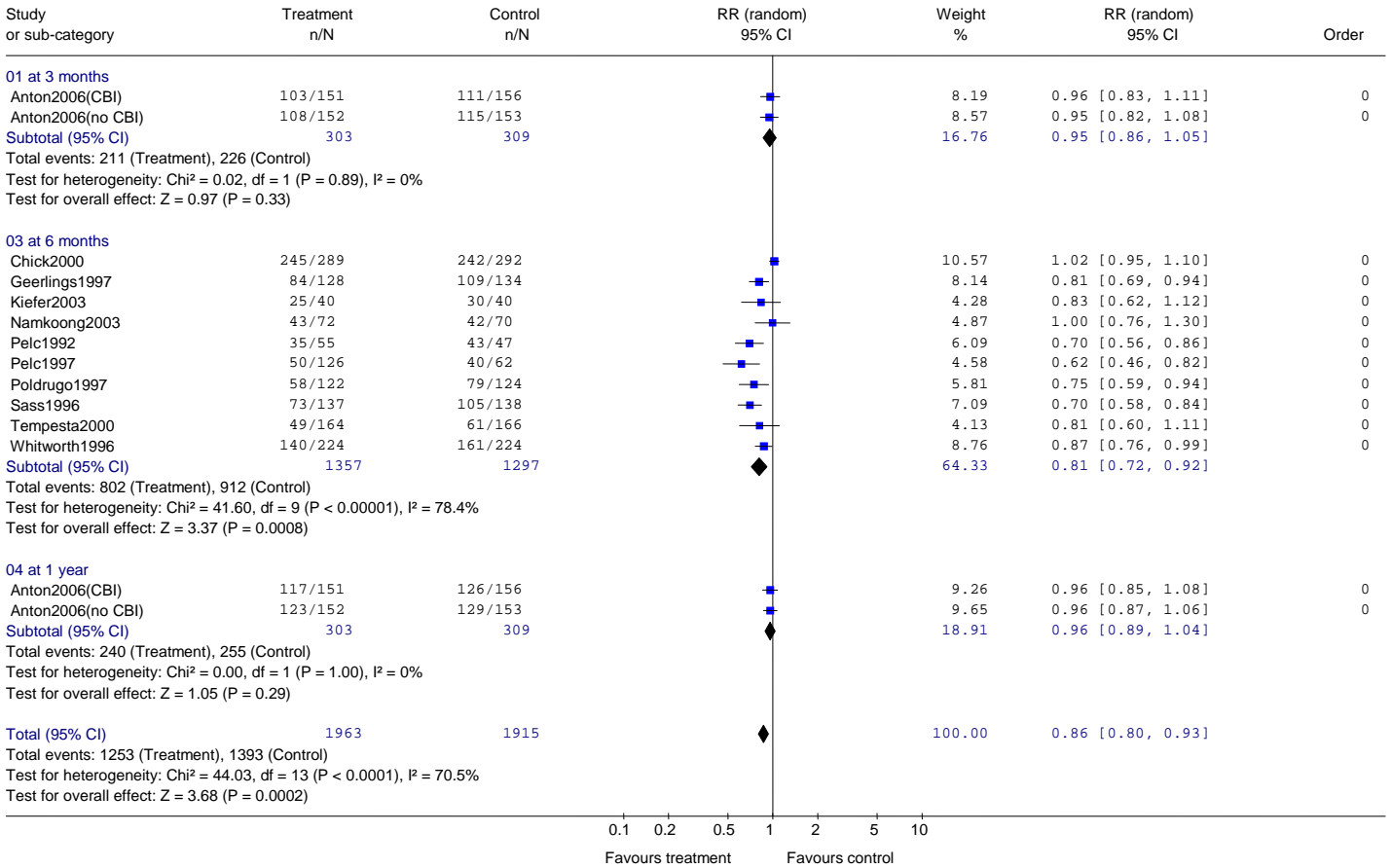


Comparison: 01 Acamprosate versus placebo
 Outcome: 10 Drinking Severity



Alcohol Use Disorders: Pharmacology forest plots

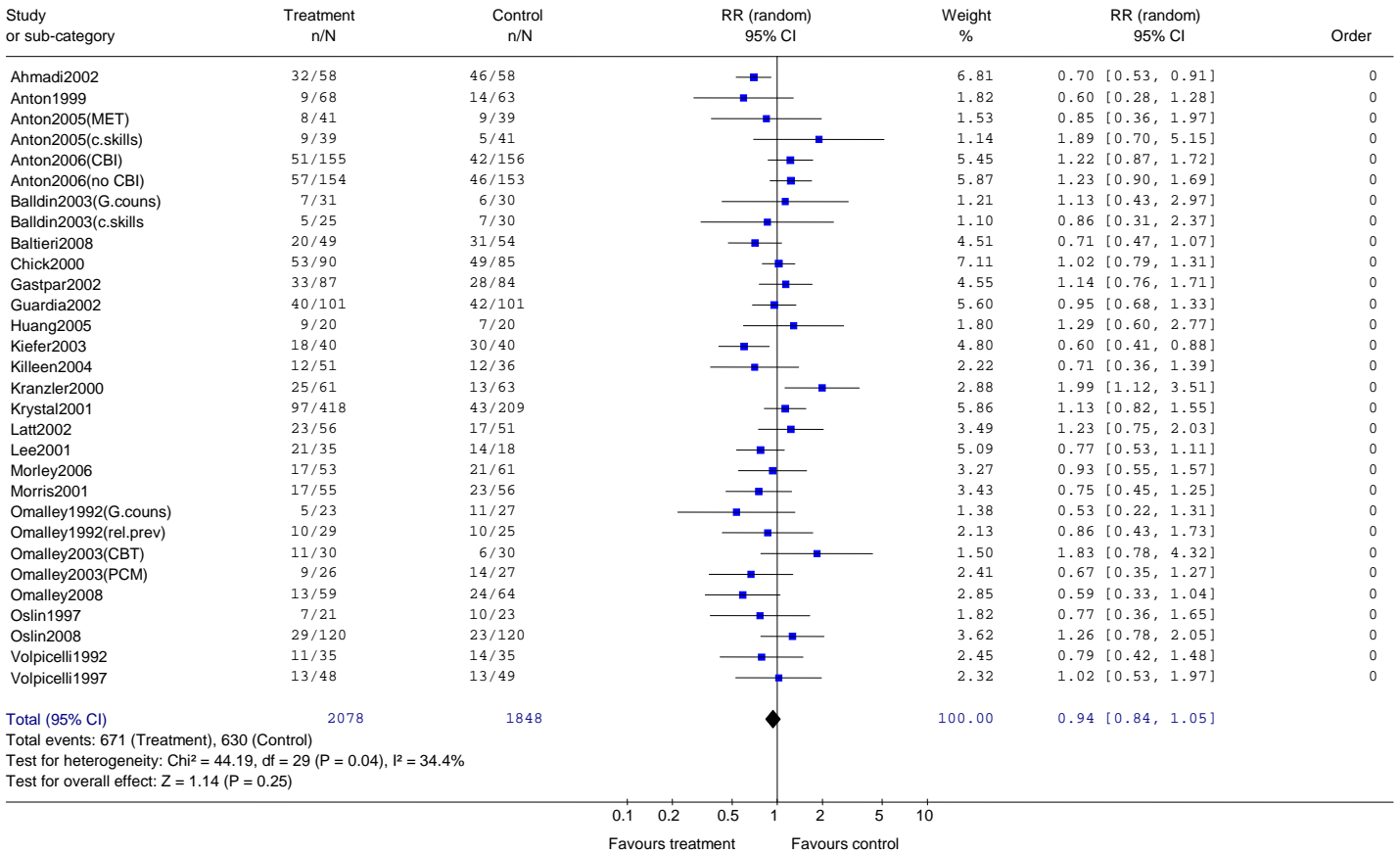
Comparison: 01 Acamprosate versus placebo
 Outcome: 11 Relapsed to heavy drinking (5+ drinks for men, 4+ for women)



2 Naltrexone

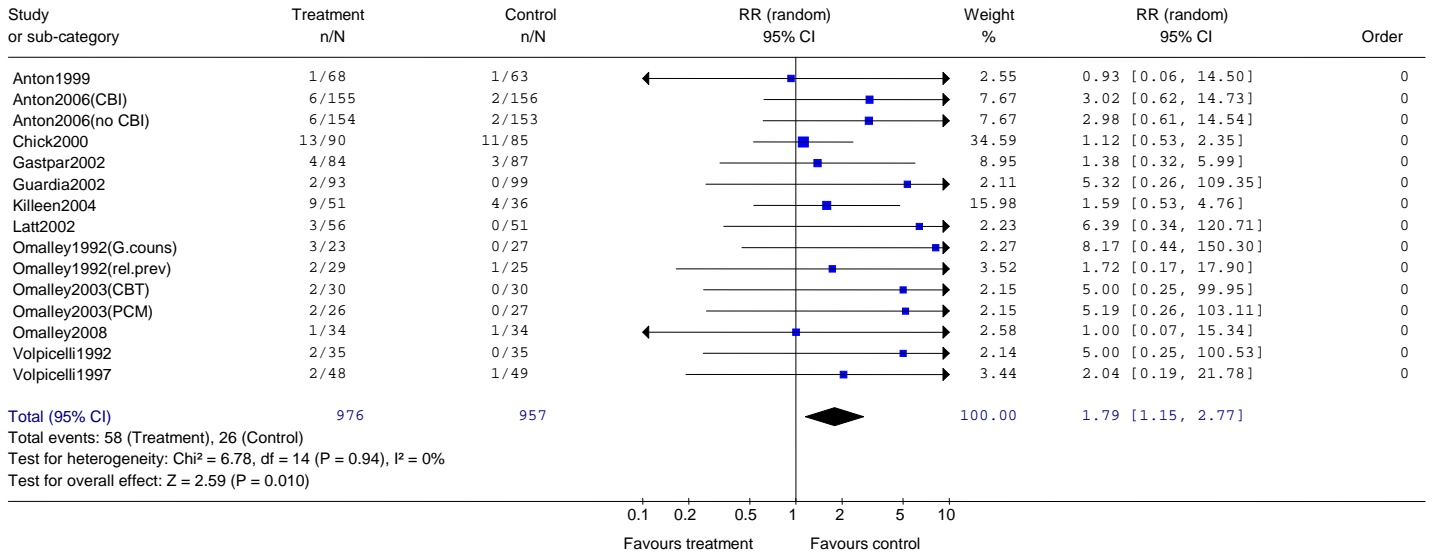
2.1 Naltrexone versus placebo

Comparison: 01 Naltrexone versus placebo
 Outcome: 01 Discontinued treatment (Leaving study early)



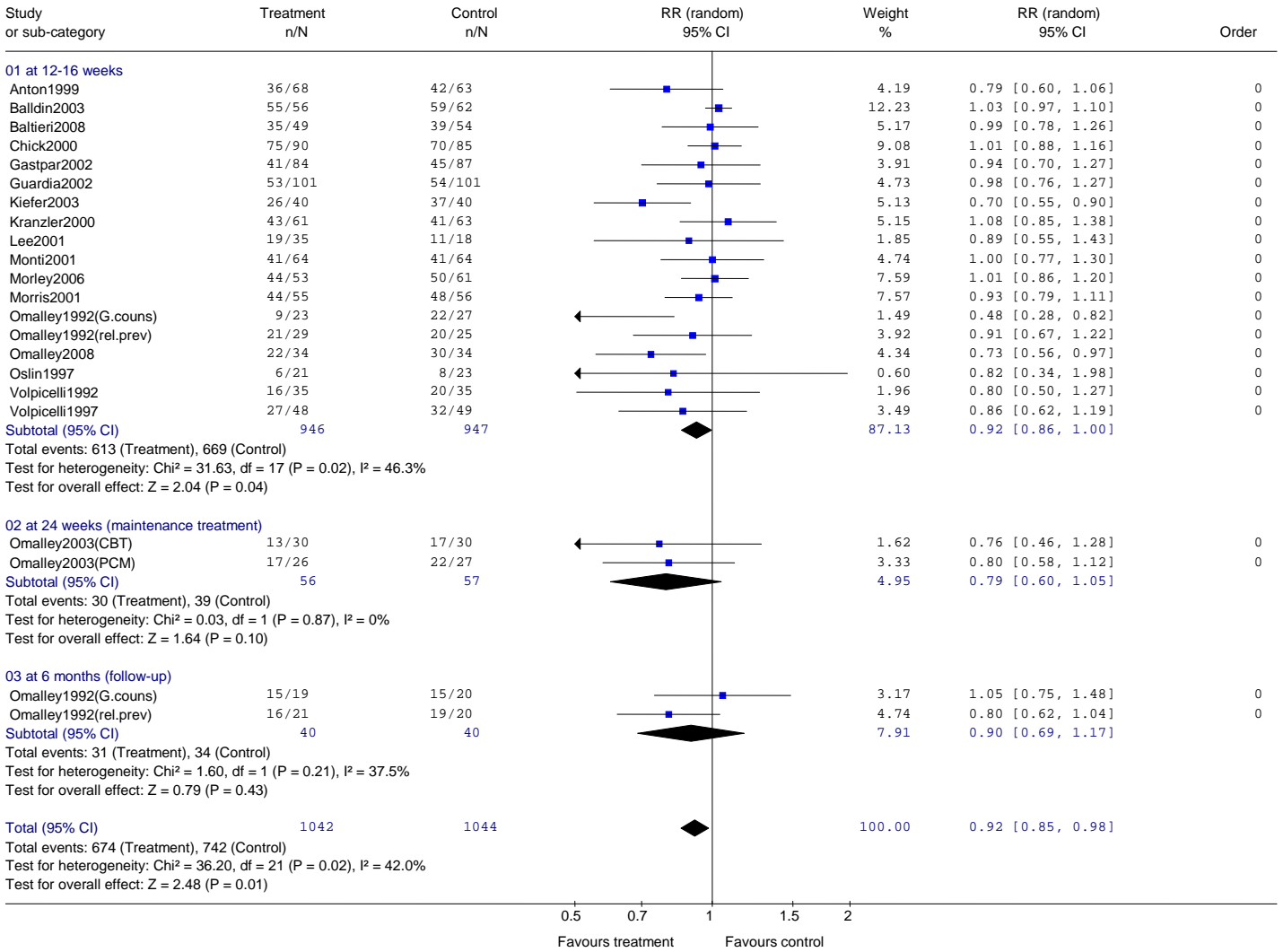
Alcohol Use Disorders: Pharmacology forest plots

Comparison: 01 Naltrexone versus placebo
 Outcome: 02 Leaving due to adverse events



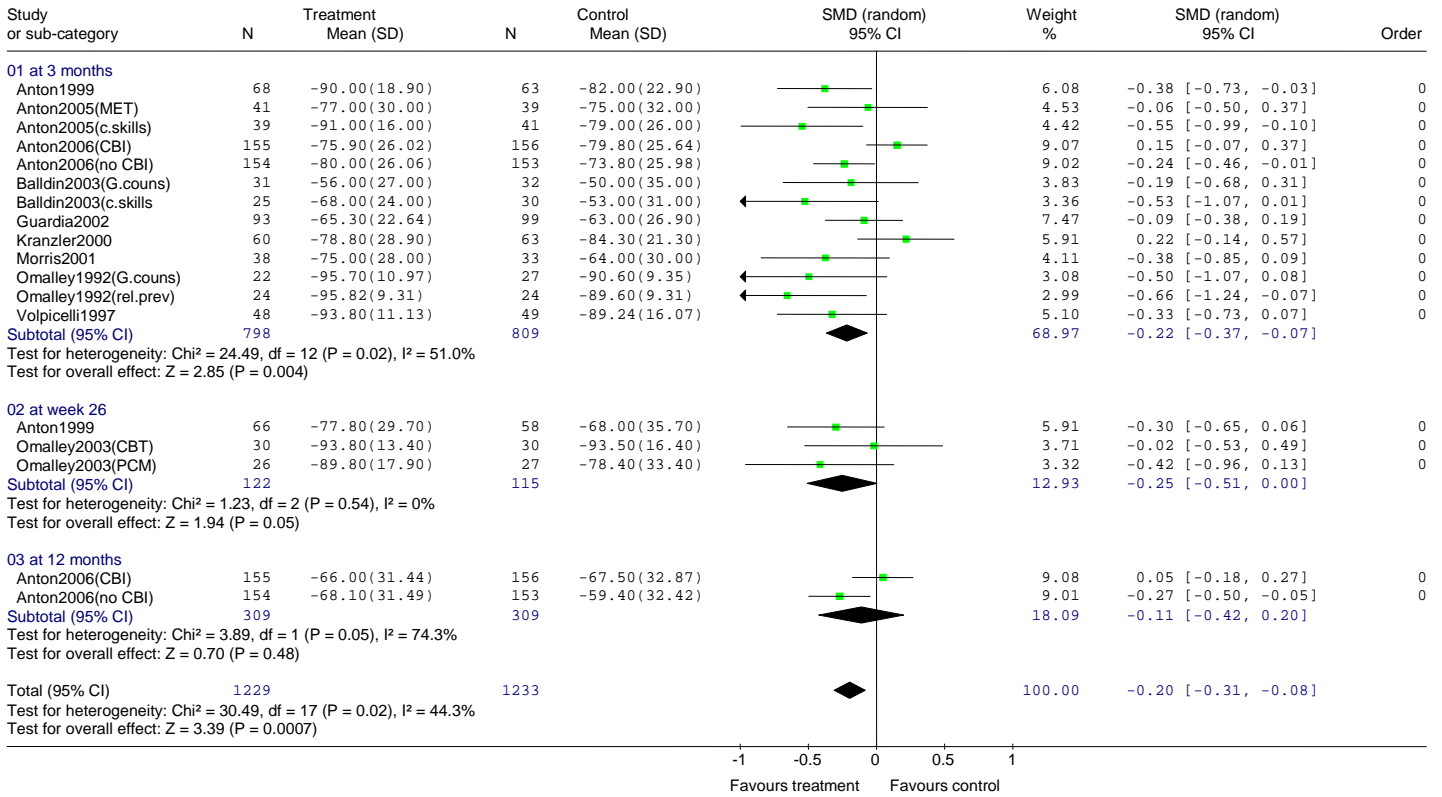
Alcohol Use Disorders: Pharmacology forest plots

Comparison: 01 Naltrexone versus placebo
 Outcome: 04 Lapsed (individuals drinking any alcohol/ not abstinent)



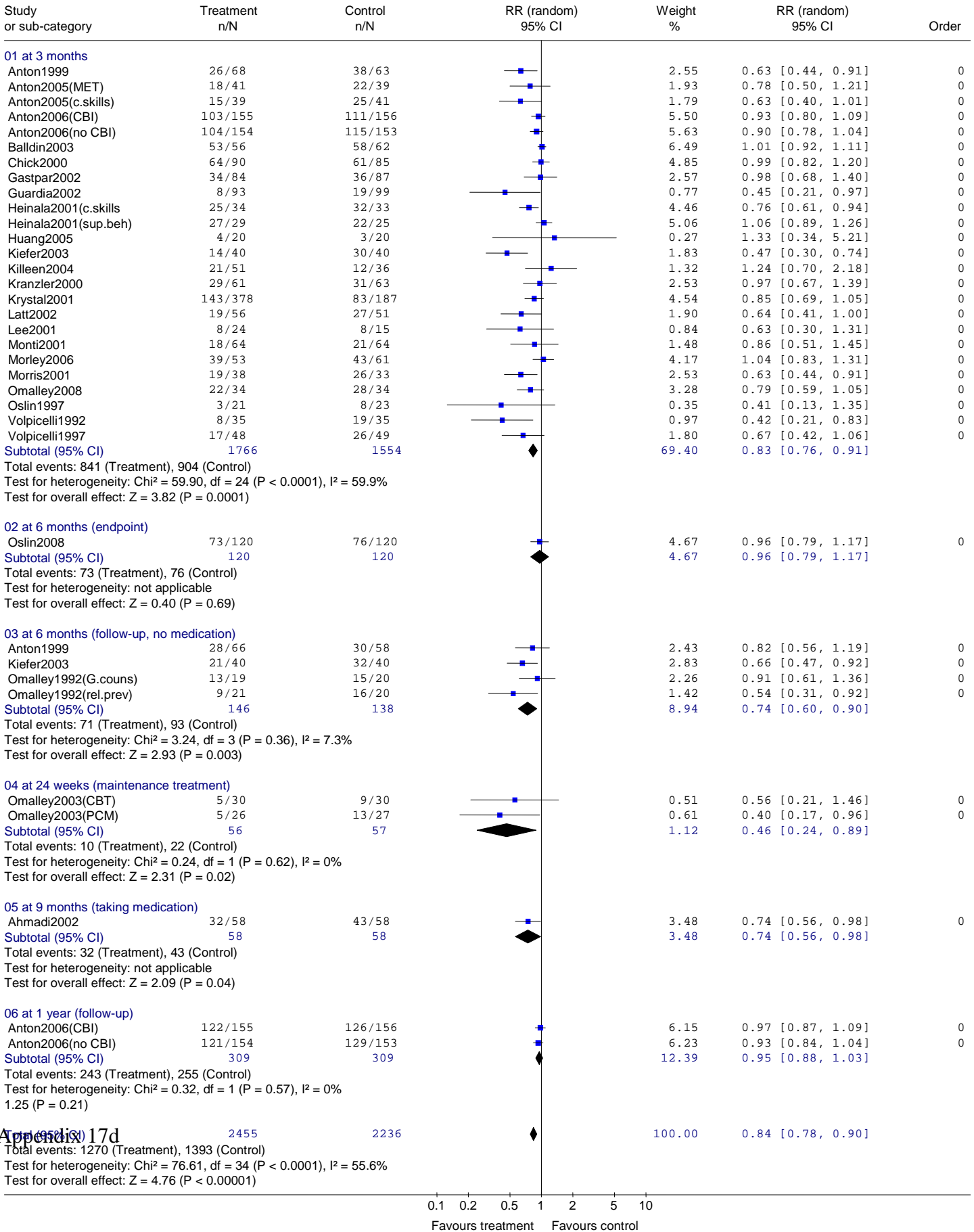
Alcohol Use Disorders: Pharmacology forest plots

Comparison: 01 Naltrexone versus placebo
 Outcome: 05 % days abstinent



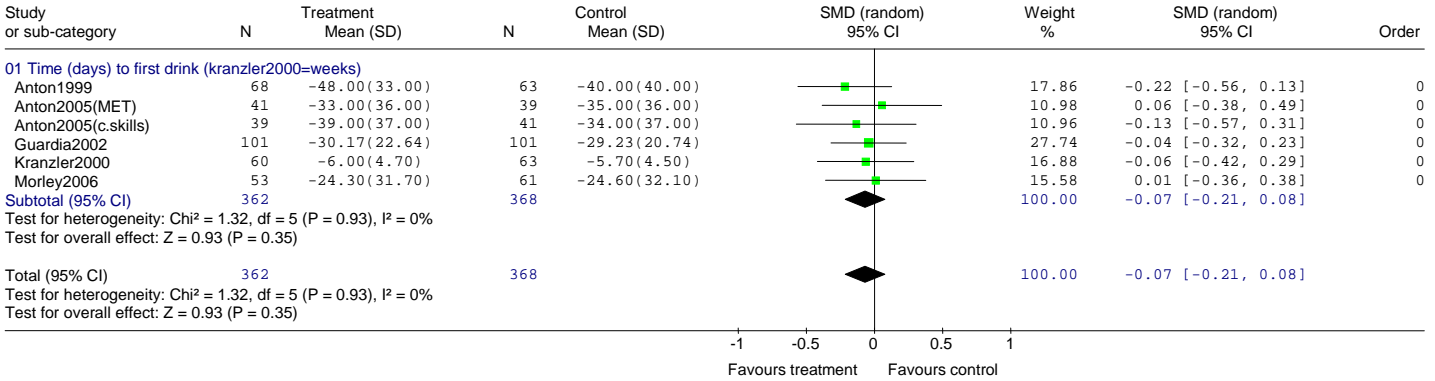
Alcohol Use Disorders: Pharmacology forest plots

Comparison: 01 Naltrexone versus placebo
 Outcome: 07 Relapse to heavy drinking

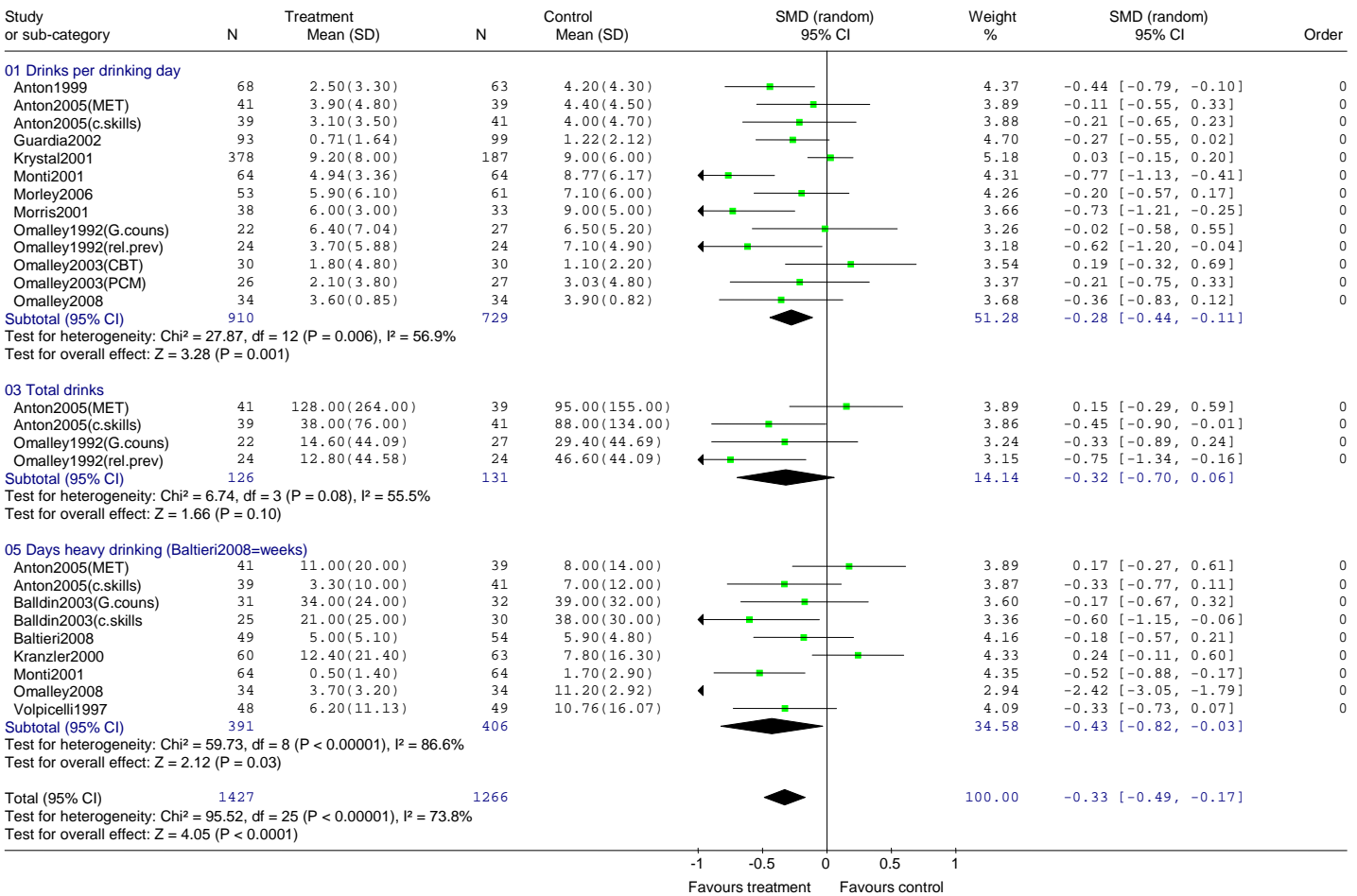


Alcohol Use Disorders: Pharmacology forest plots

Comparison: 01 Naltrexone versus placebo
 Outcome: 06 Time to first drink

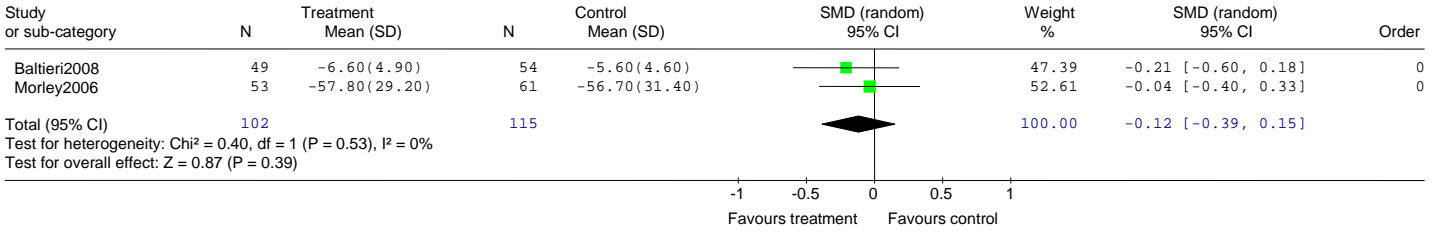


Comparison: 01 Naltrexone versus placebo
 Outcome: 10 Measures of drinking (at endpoint)

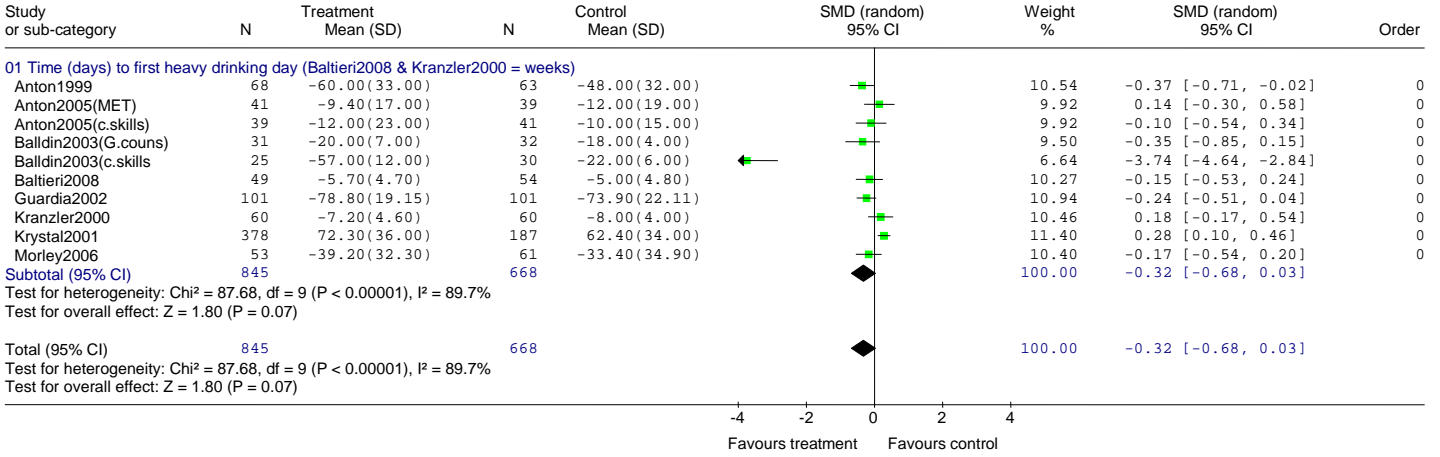


Alcohol Use Disorders: Pharmacology forest plots

Comparison: 01 Naltrexone versus placebo
 Outcome: 12 CAD



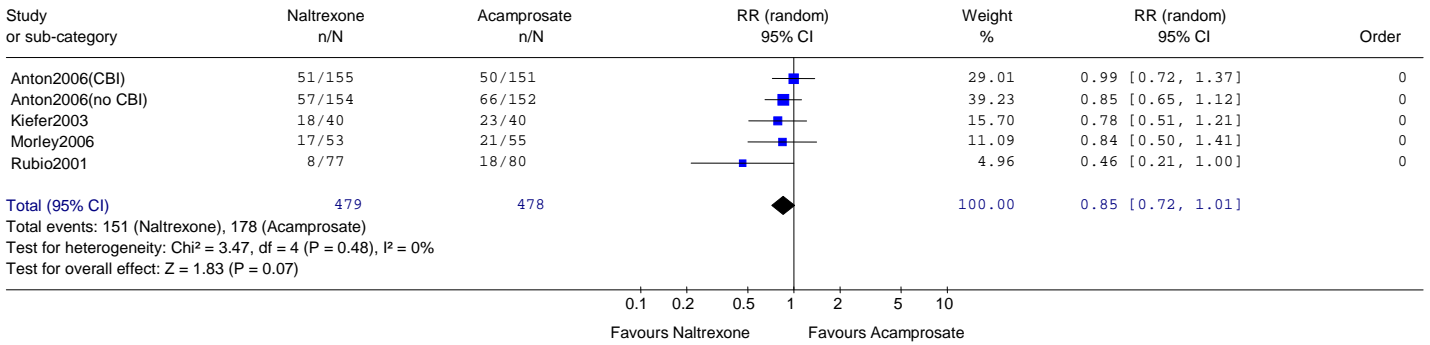
Comparison: 01 Naltrexone versus placebo
 Outcome: 14 Time to first heavy drinking day



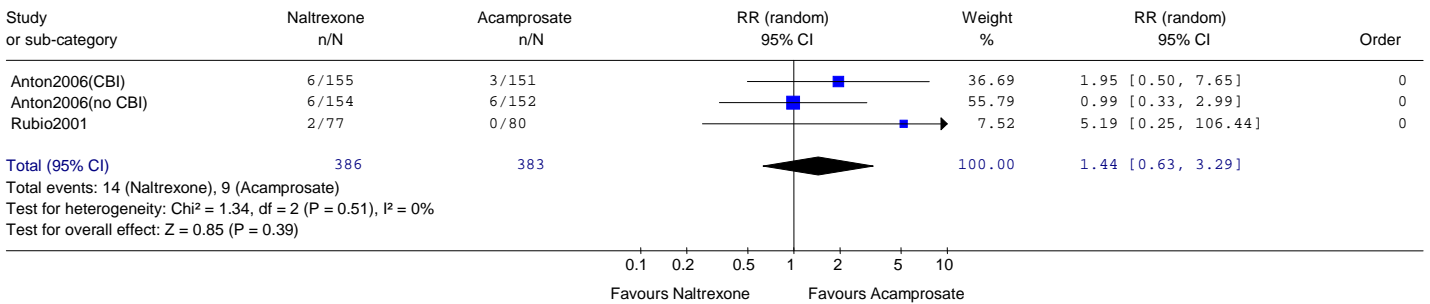
Alcohol Use Disorders: Pharmacology forest plots

3 Naltrexone versus acamprosate

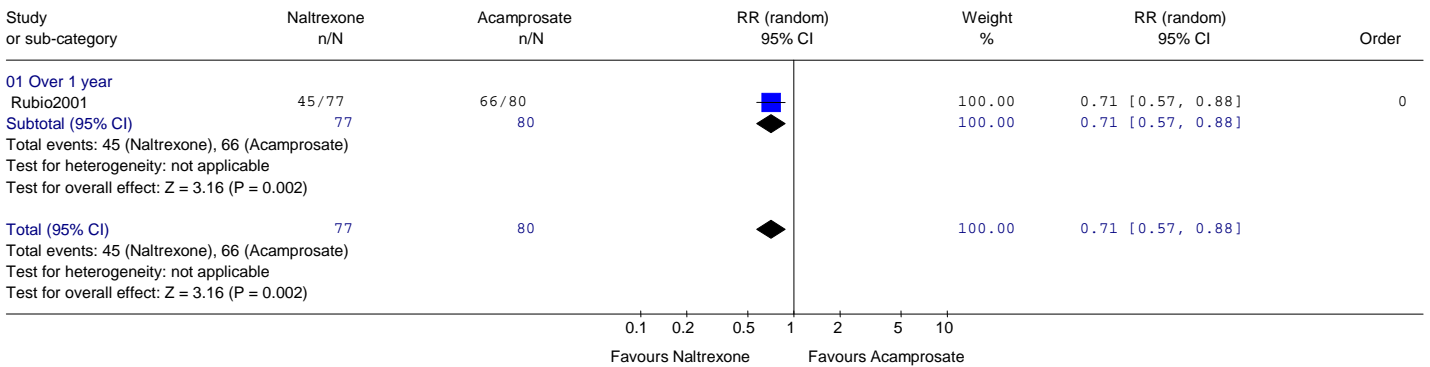
Comparison: 11 Naltrexone versus acamprosate
 Outcome: 01 Discontinued treatment (Leaving study early)



Comparison: 11 Naltrexone versus acamprosate
 Outcome: 02 Leaving due to adverse events

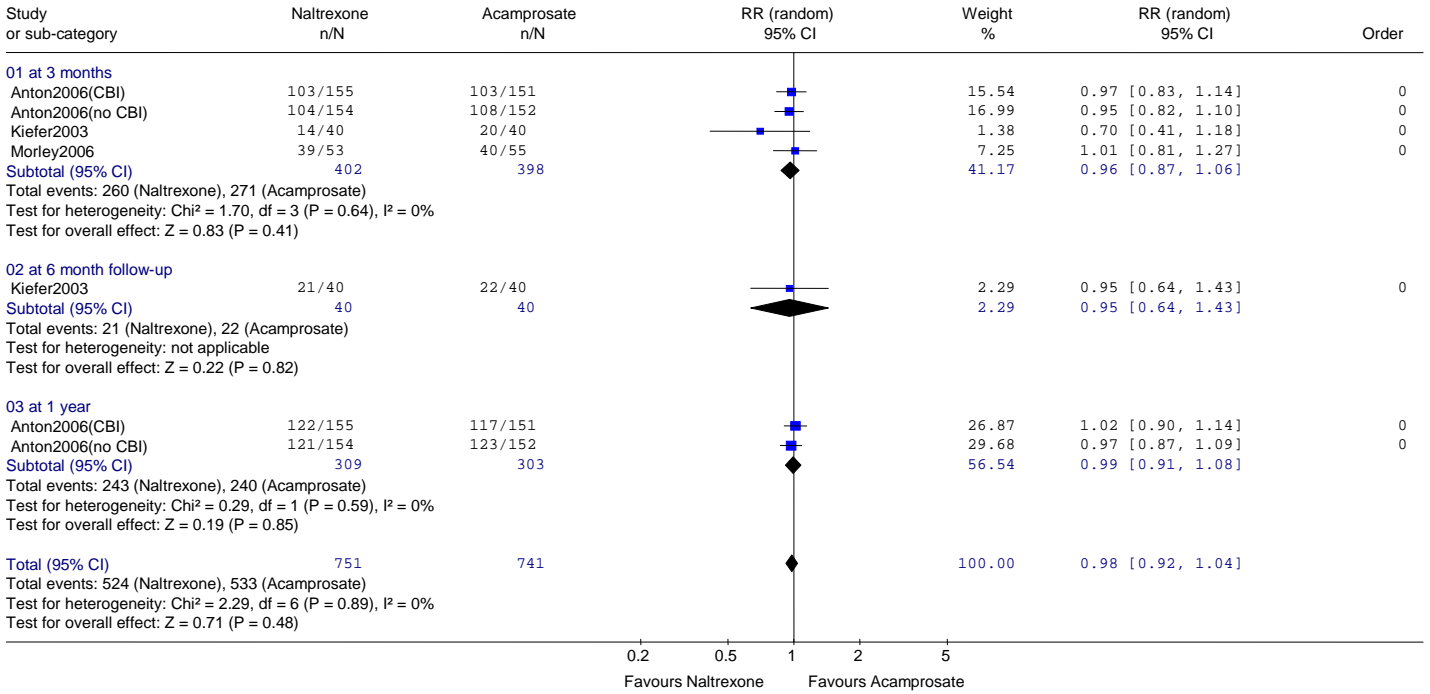


Comparison: 11 Naltrexone vs acamprosate
 Outcome: 03 Lapsed (individuals drinking any alcohol/ non-abstinent)

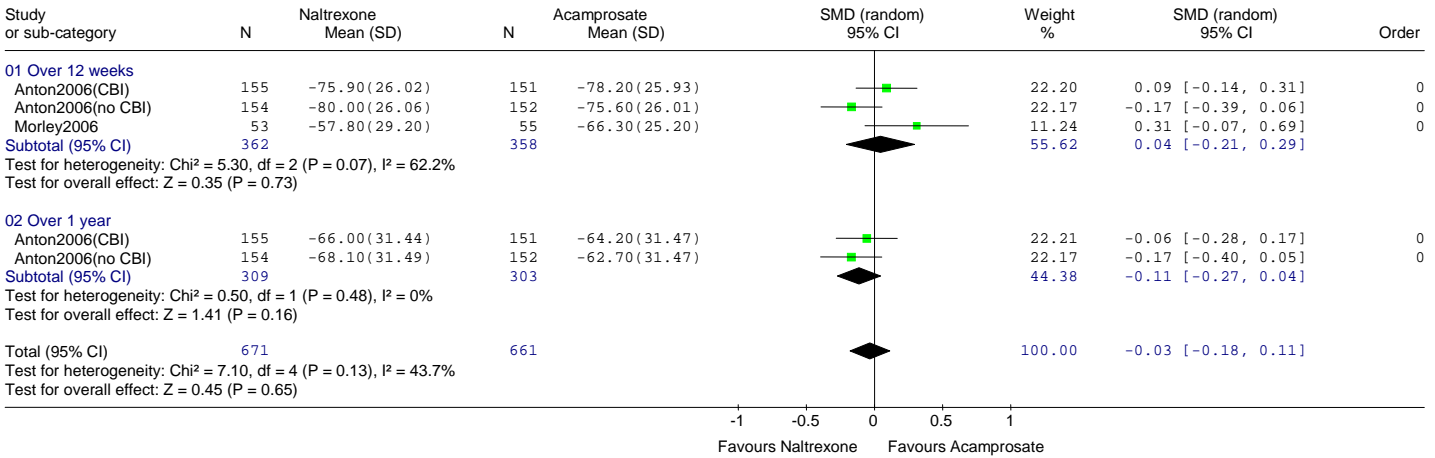


Alcohol Use Disorders: Pharmacology forest plots

Comparison: 11 Naltrexone vs acamprosate
 Outcome: 04 Relapsed to heavy drinking at endpoint

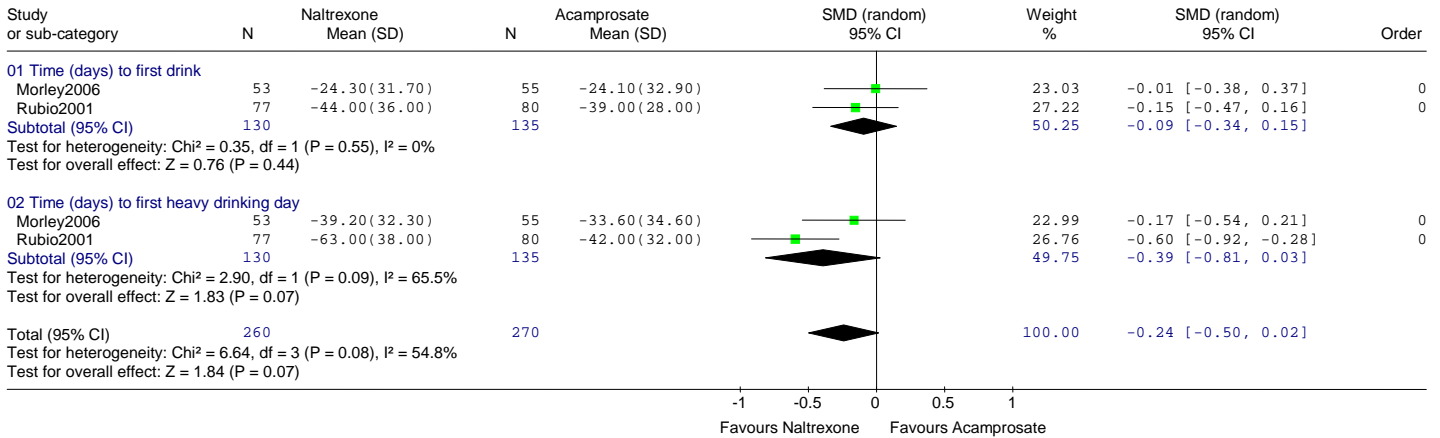


Comparison: 11 Naltrexone versus acamprosate
 Outcome: 05 % days abstinent

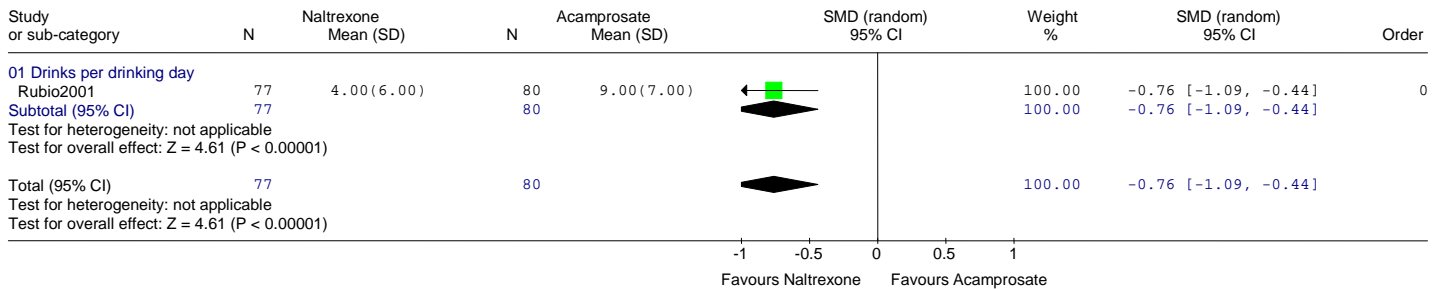


Alcohol Use Disorders: Pharmacology forest plots

Comparison: 11 Naltrexone versus acamprostate
 Outcome: 06 Time to first drink / heavy drinking days

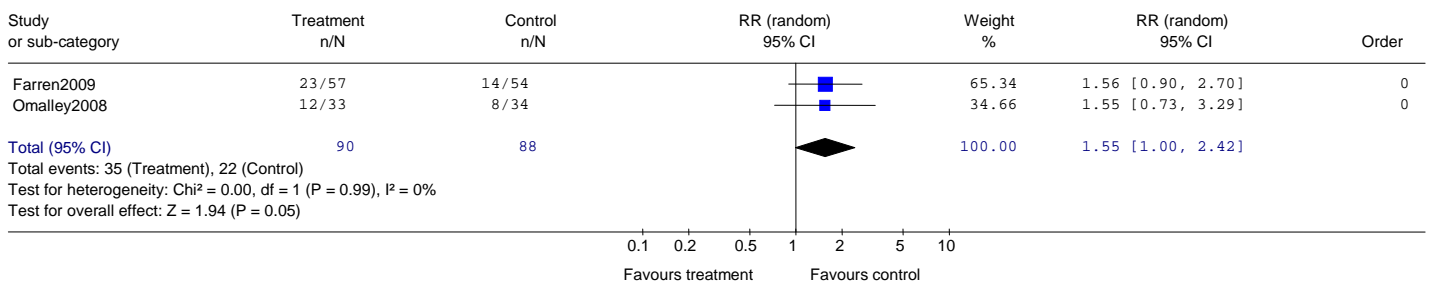


Comparison: 11 Naltrexone vs acamprostate
 Outcome: 07 Drinking severity



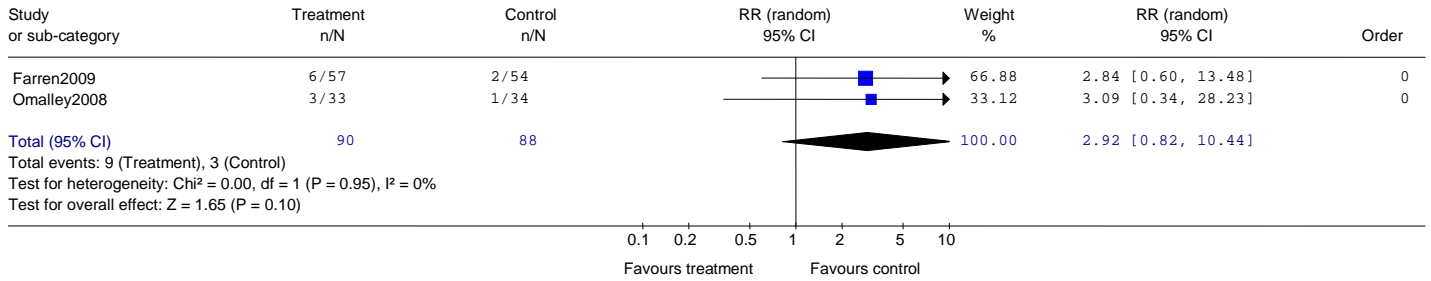
4 Naltrexone + Sertraline versus naltrexone

Comparison: 16 Naltrexone + sertraline vs naltrexone
 Outcome: 01 Leaving study early

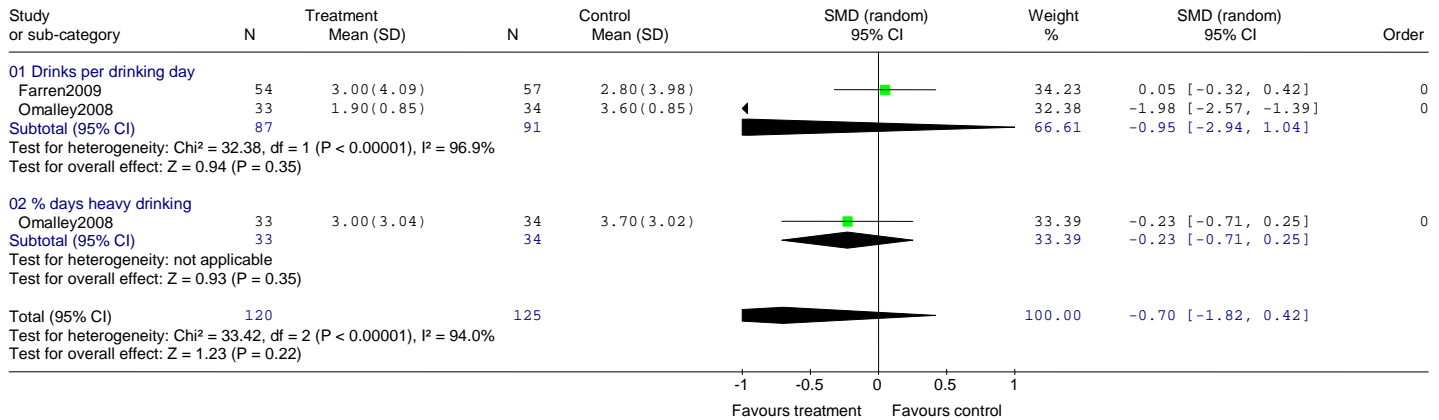


Alcohol Use Disorders: Pharmacology forest plots

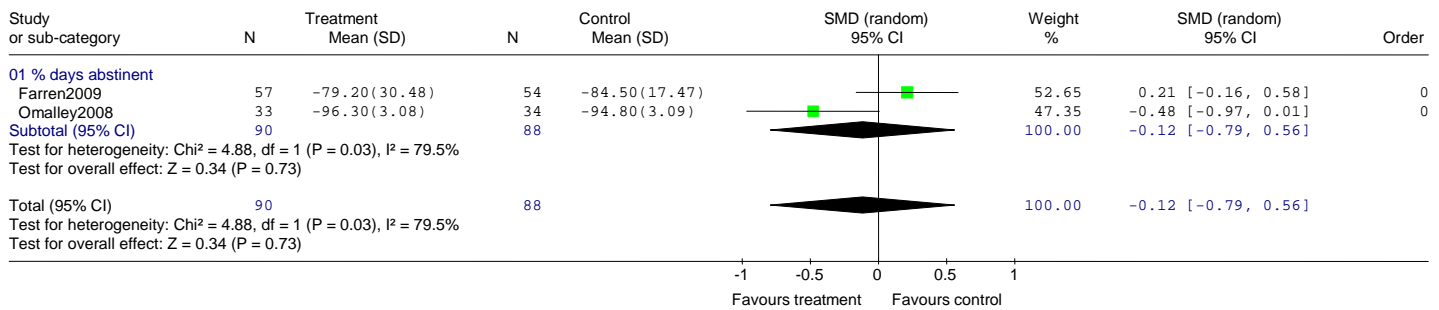
Comparison: 16 Naltrexone + sertraline vs naltrexone
 Outcome: 02 Leaving study due to adverse events



Comparison: 16 Naltrexone + sertraline vs naltrexone
 Outcome: 03 Drinking severity

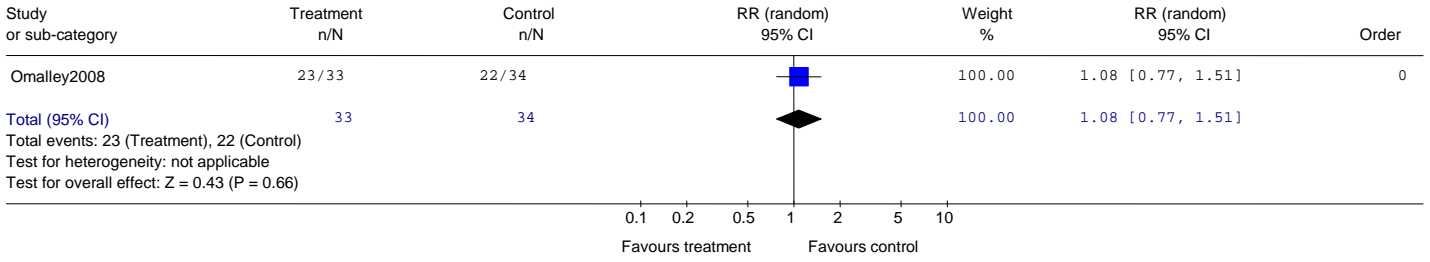


Comparison: 16 Naltrexone + sertraline vs naltrexone
 Outcome: 04 Drinking frequency

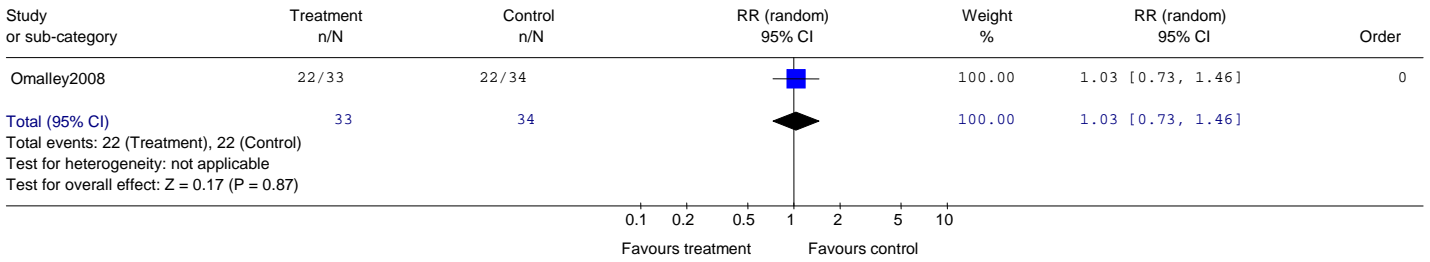


Alcohol Use Disorders: Pharmacology forest plots

Comparison: 16 Naltrexone + sertraline vs naltrexone
 Outcome: 05 Lapsed (individuals drinking any alcohol/ not abstinent)

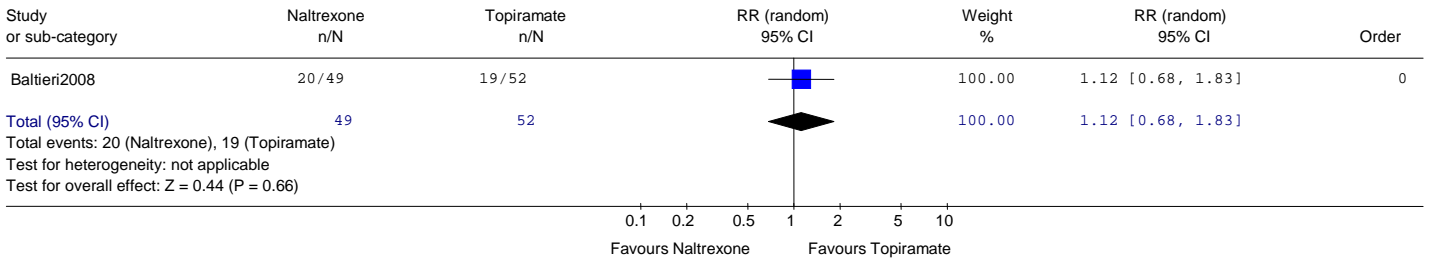


Comparison: 16 Naltrexone + sertraline vs naltrexone
 Outcome: 06 Relapse to heavy drinking



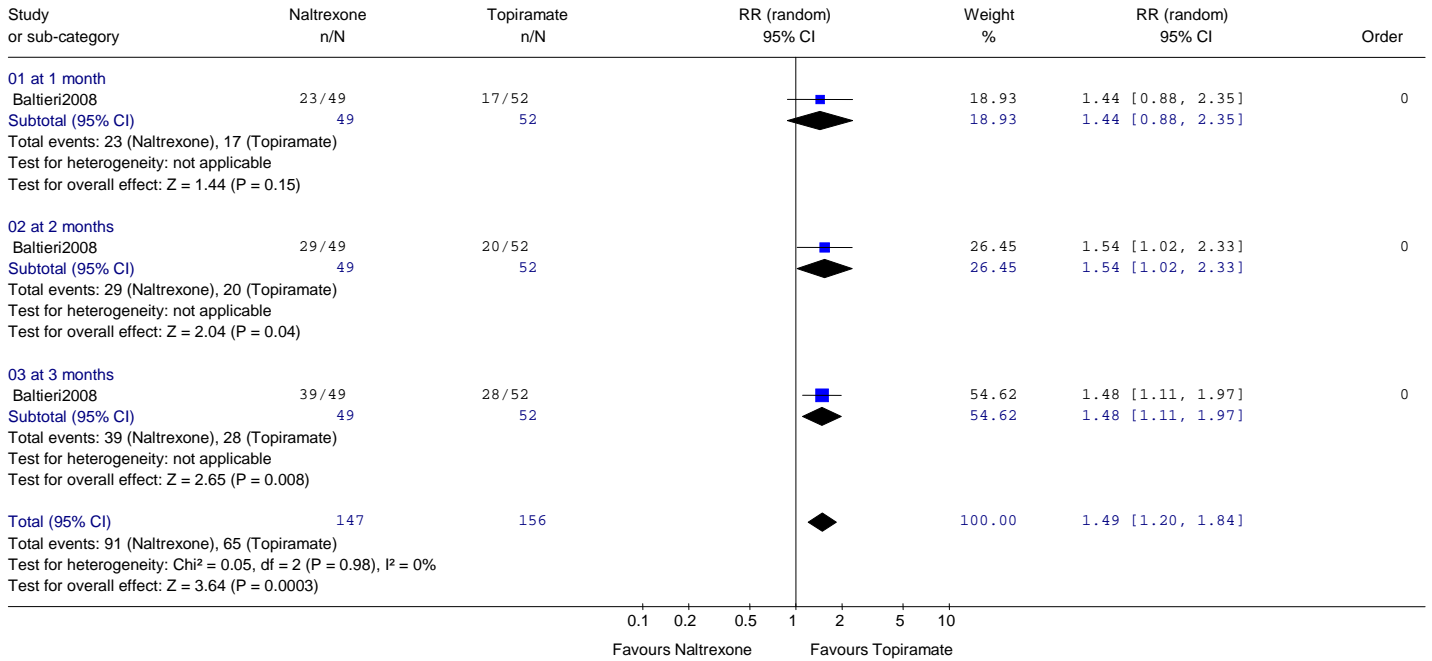
5 Naltrexone versus topiramate

Comparison: 28 naltrexone versus topiramate
 Outcome: 01 Leaving study early

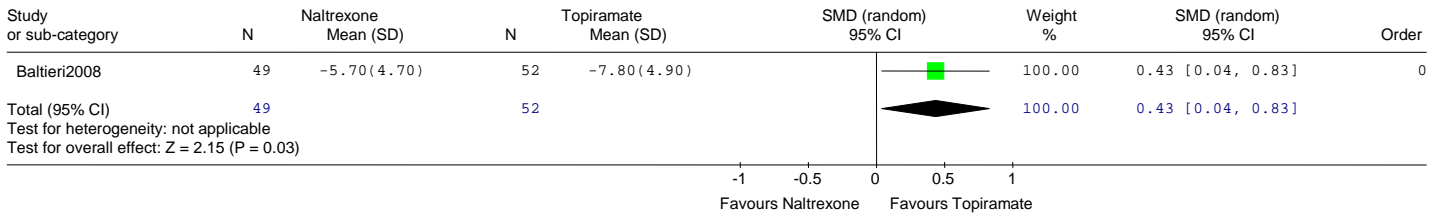


Alcohol Use Disorders: Pharmacology forest plots

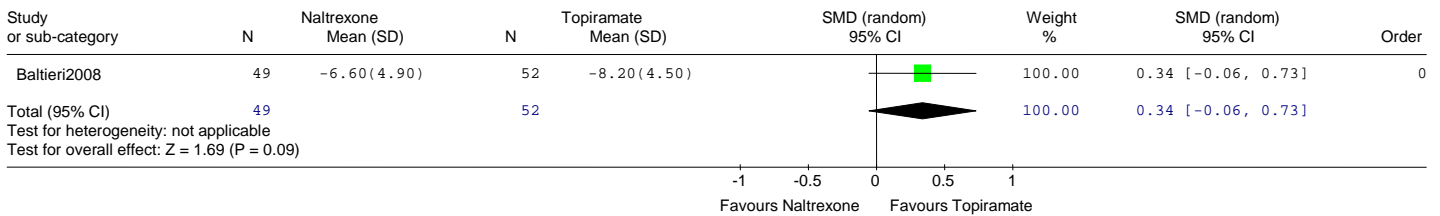
Comparison: 28 Naltrexone vs topiramate
 Outcome: 02 Lapsed (individuals drinking any alcohol/ not abstinent)



Comparison: 28 Naltrexone vs topiramate
 Outcome: 03 Time (weeks) to first relapse (>60g alcohol)

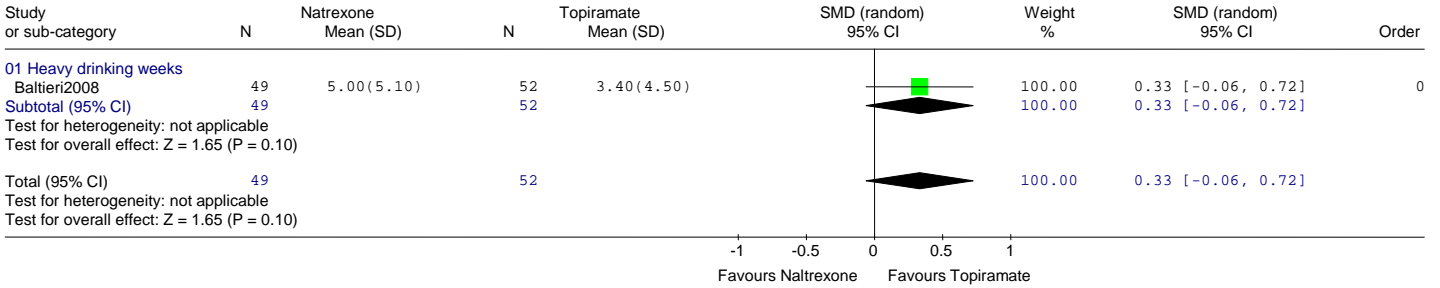


Comparison: 28 Naltrexone vs topiramate
 Outcome: 04 Cumulative abstinence duration (in Weeks)



Alcohol Use Disorders: Pharmacology forest plots

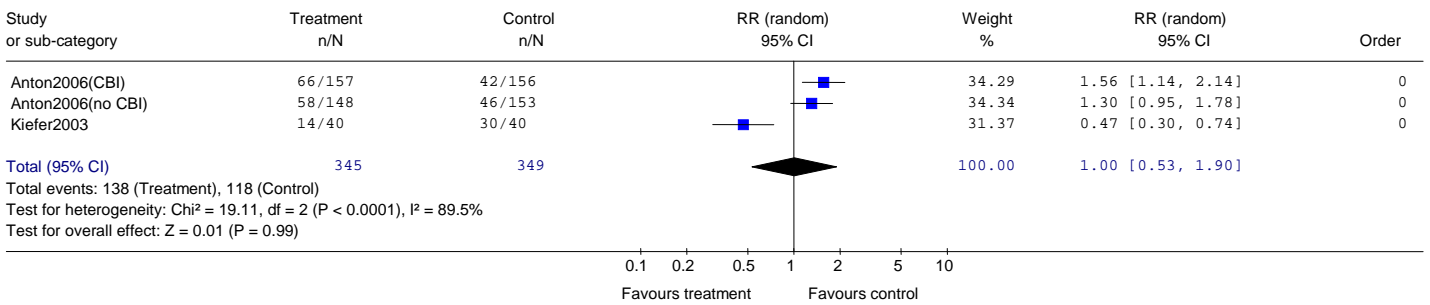
Comparison: 28 Naltrexone vs topiramate
 Outcome: 05 Drinking severity



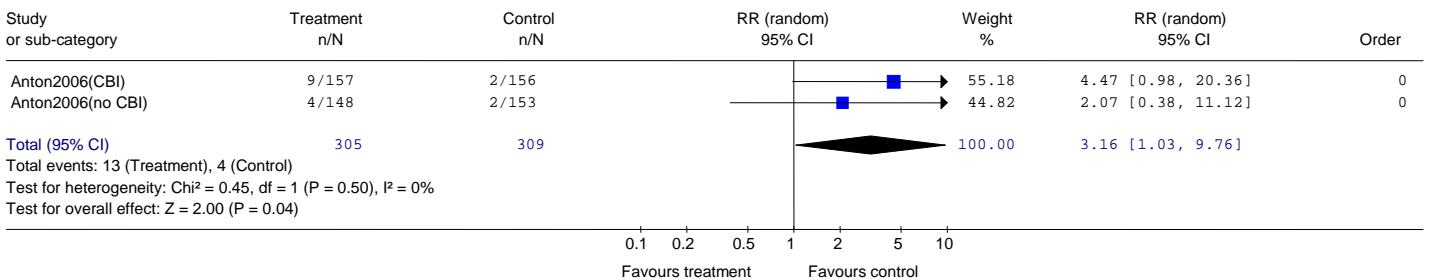
6 Naltrexone + Acamprosate

6.1 naltrexone + acamprosate versus placebo

Comparison: 12 Naltrexone + acamprosate versus placebo
 Outcome: 01 Discontinued treatment (Leaving study early)

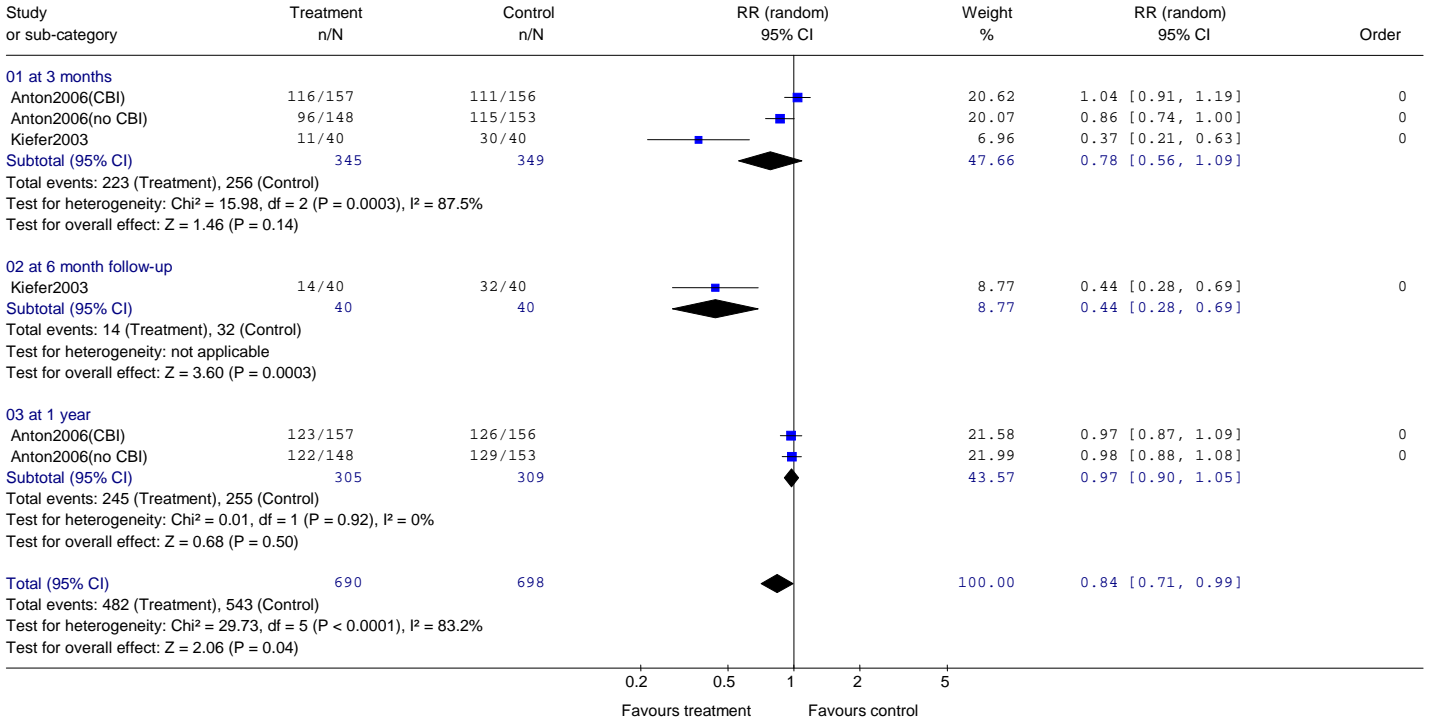


Comparison: 12 Naltrexone + acamprosate versus placebo
 Outcome: 02 Leaving due to adverse events

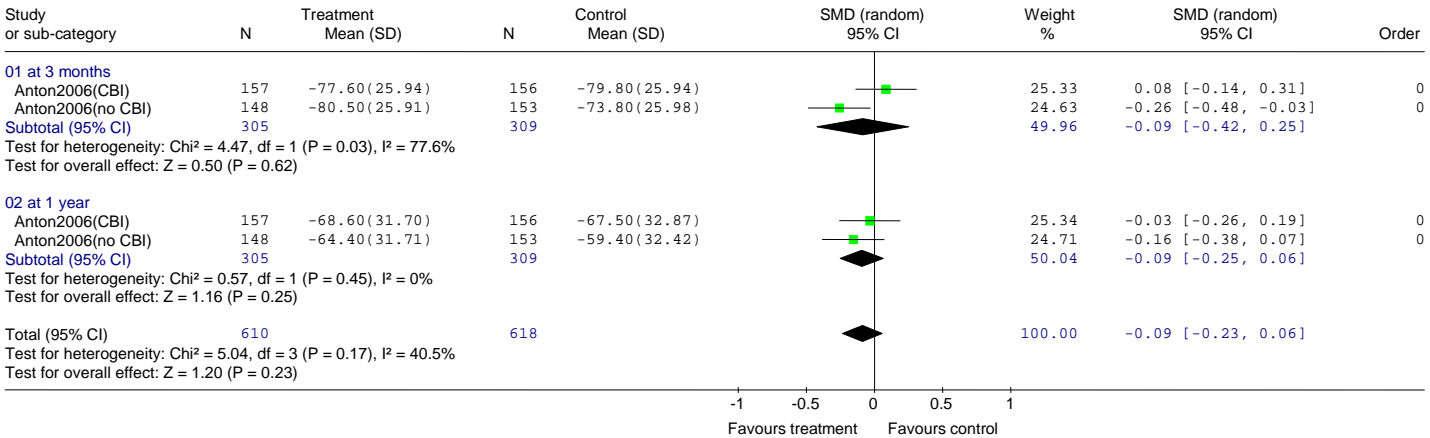


Alcohol Use Disorders: Pharmacology forest plots

Comparison: 12 Naltrexone + acamprostate versus placebo
 Outcome: 03 Relapsed (heavy drinking)



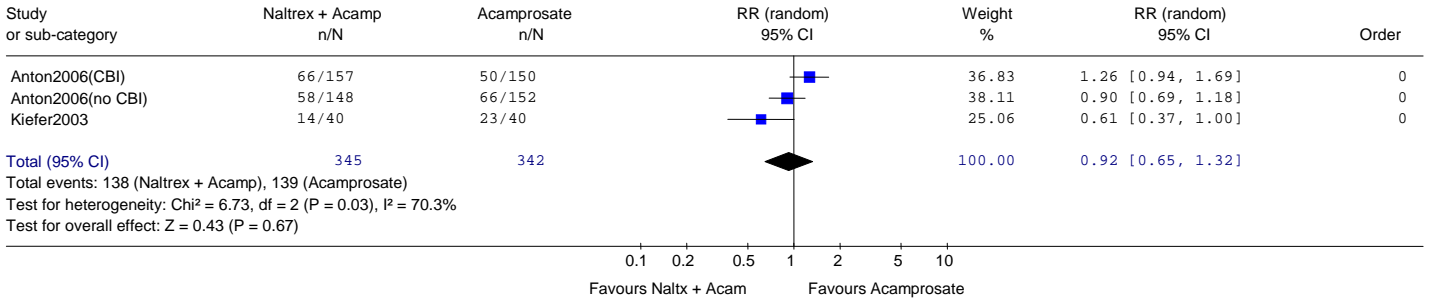
Comparison: 12 Naltrexone + acamprostate versus placebo
 Outcome: 04 % days abstinent



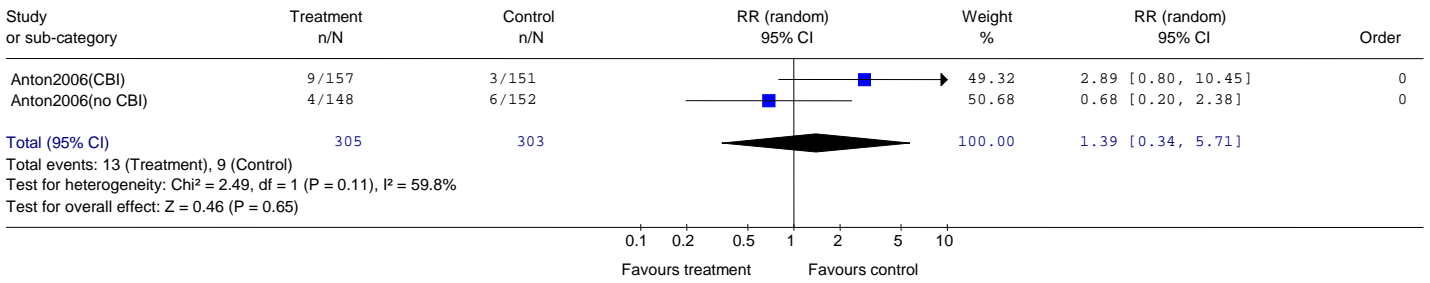
Alcohol Use Disorders: Pharmacology forest plots

7 Naltrexone + acamprosate versus acamprosate

Comparison: 13 Naltrexone + acamprosate versus acamprosate
 Outcome: 01 Discontinued treatment (Leaving study early)

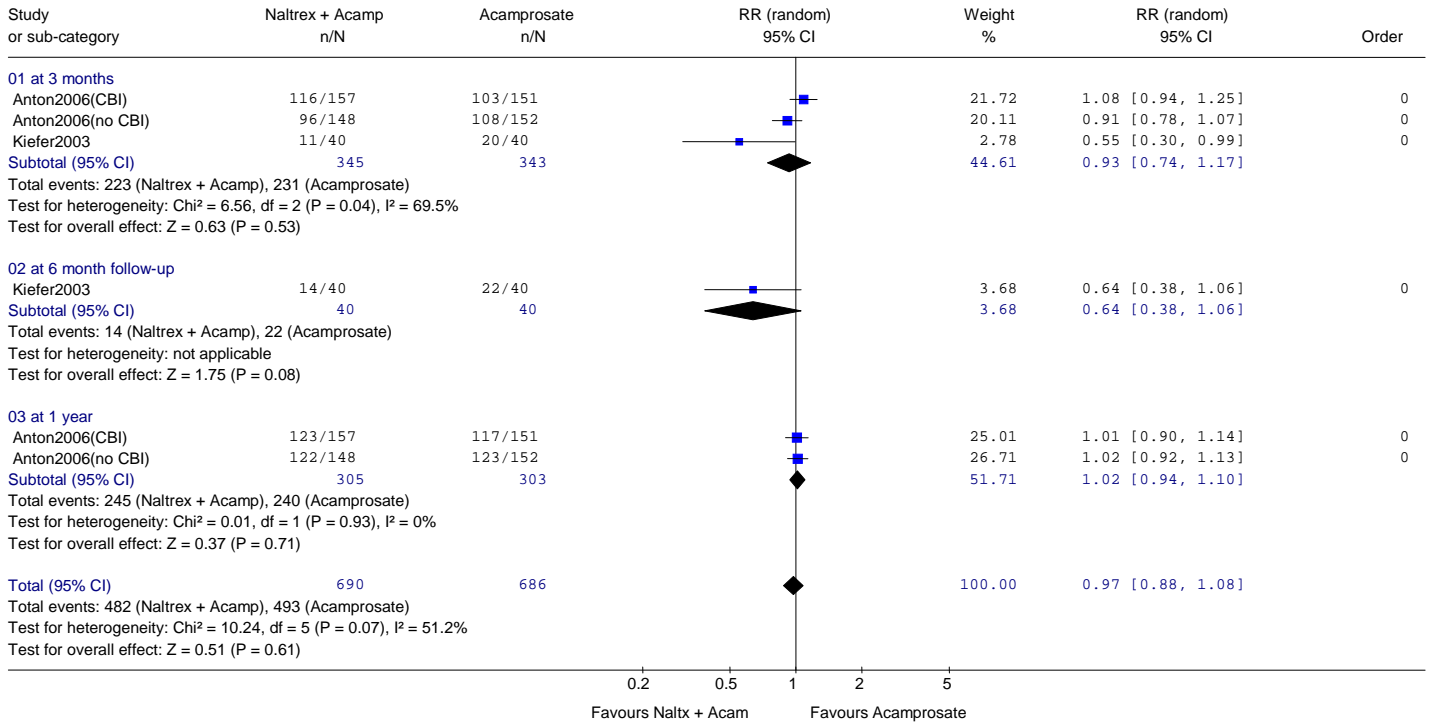


Comparison: 13 Naltrexone + acamprosate versus acamprosate
 Outcome: 02 Leaving due to adverse events

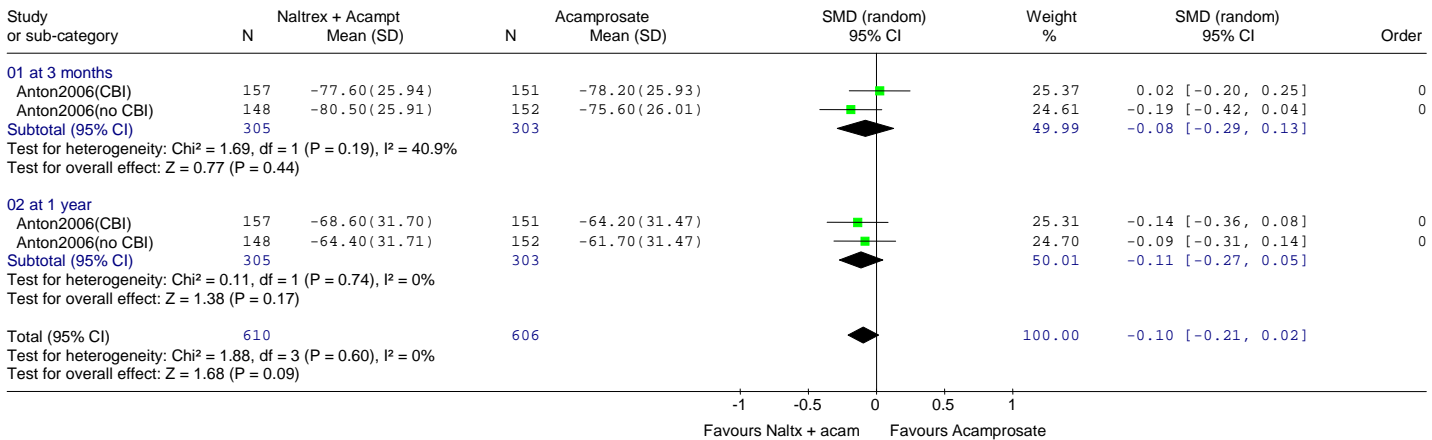


Alcohol Use Disorders: Pharmacology forest plots

Comparison: 13 Naltrexone + acamprosate versus acamprosate
 Outcome: 03 Relapsed (heavy drinking)

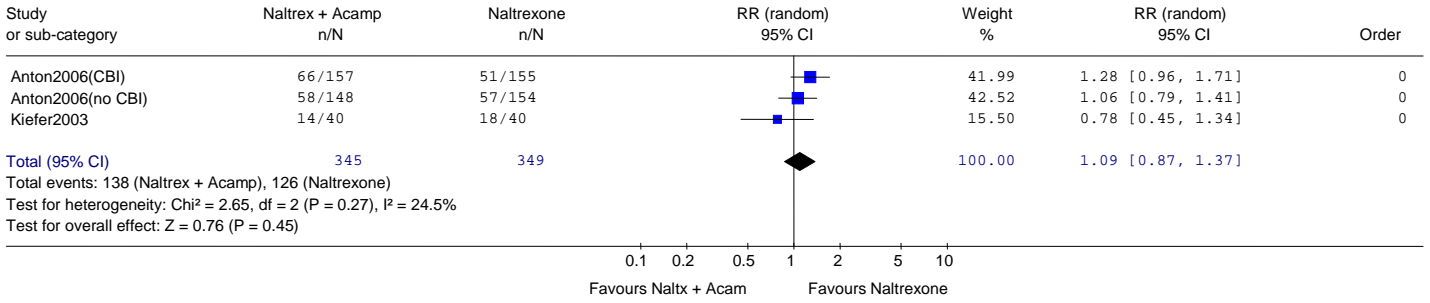


Comparison: 13 Naltrexone + acamprosate versus acamprosate
 Outcome: 04 % days abstinent

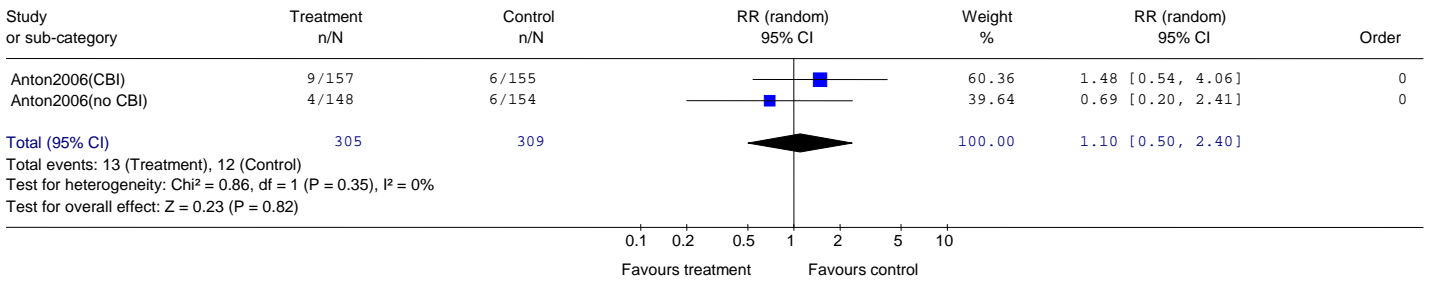


8 Naltrexone + acamprosate versus naltrexone

Comparison: 14 Naltrexone + acamprosate versus naltrexone
 Outcome: 01 Discontinued treatment (Leaving study early)

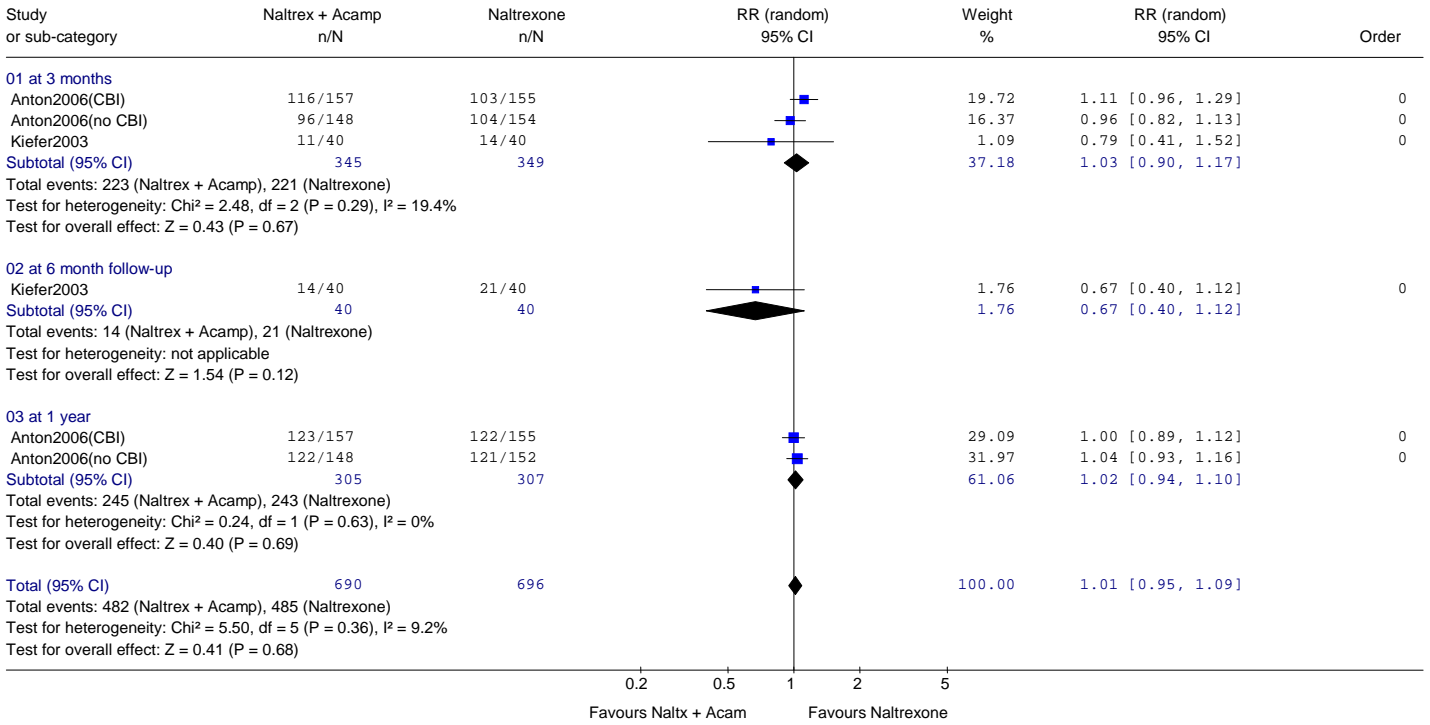


Comparison: 14 Naltrexone + acamprosate versus naltrexone
 Outcome: 02 Leaving due to adverse events

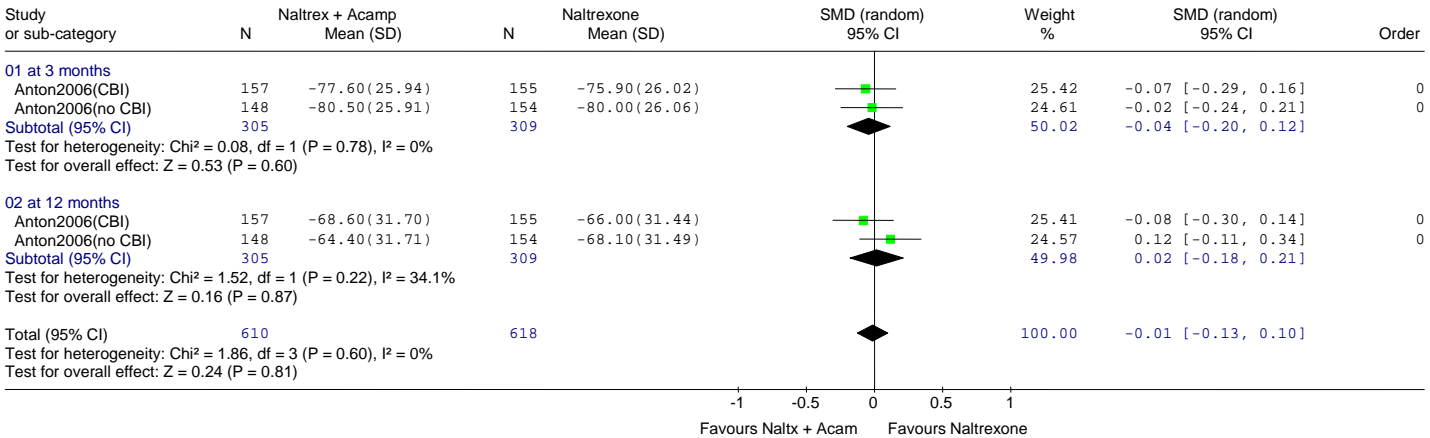


Alcohol Use Disorders: Pharmacology forest plots

Comparison: 14 Naltrexone + acamprostate versus naltrexone
 Outcome: 03 Relapsed (heavy drinking)



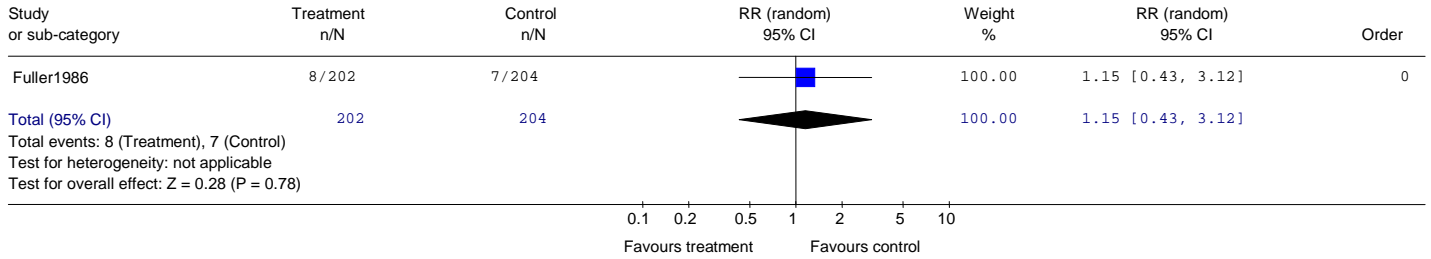
Comparison: 14 Naltrexone + acamprostate versus naltrexone
 Outcome: 04 % days abstinent



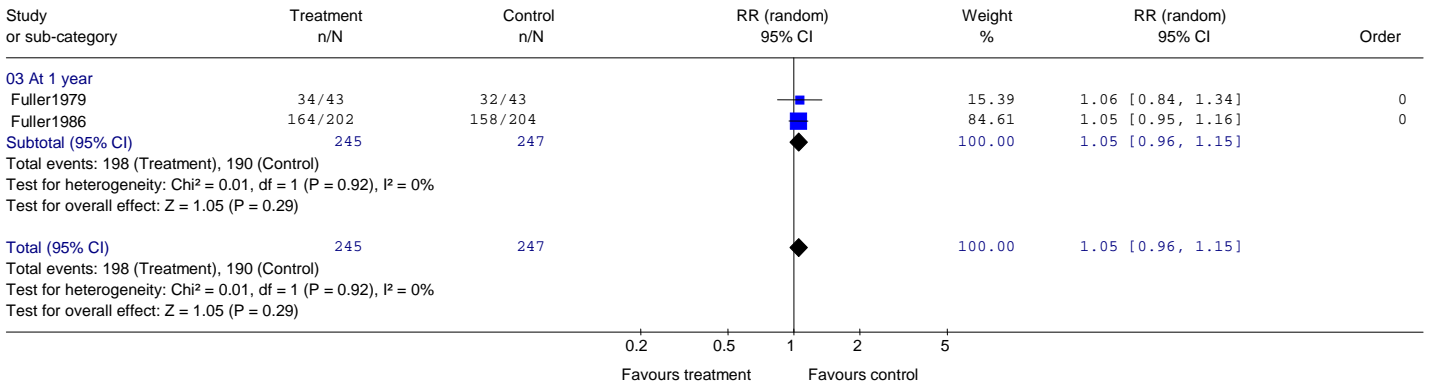
9 Disulfiram

9.1 Disulfiram versus placebo

Comparison: 01 Disulfiram (Oral) versus Placebo (or 1g Disulfiram)
 Outcome: 01 Discontinued study - Leaving study for any reason

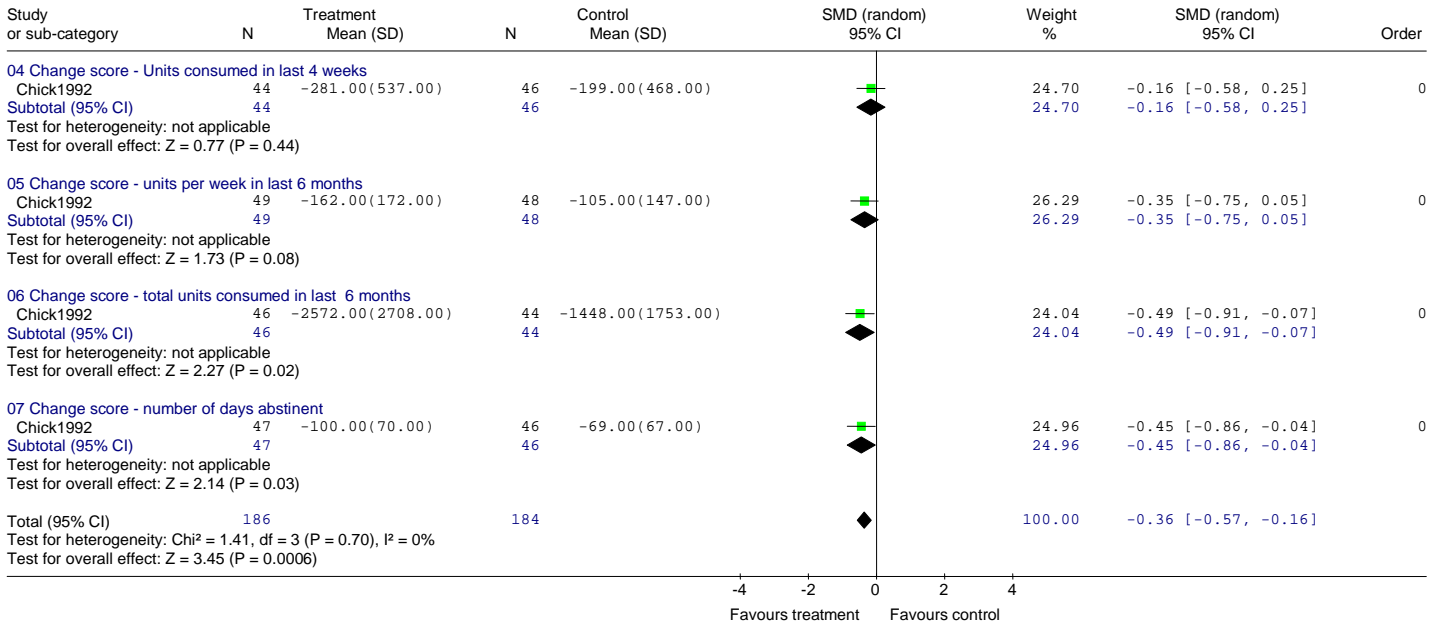


Comparison: 01 Disulfiram (Oral) versus Placebo (or 1g Disulfiram)
 Outcome: 02 Lapsed (Individuals drinking any alcohol/ not abstinent)



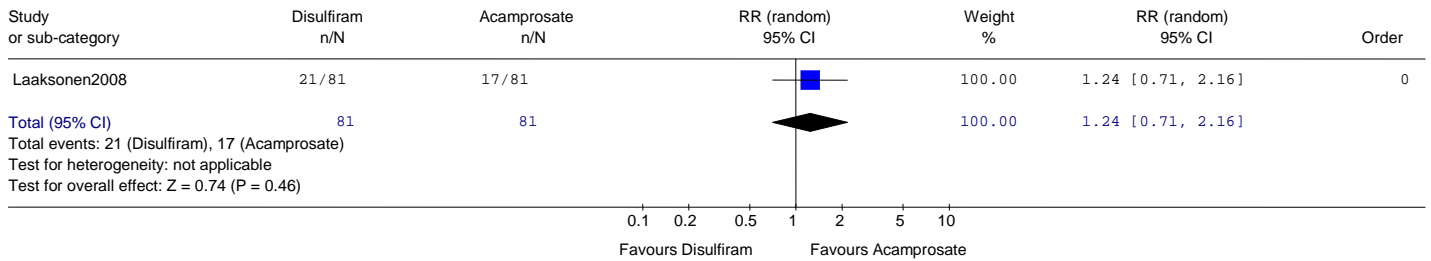
Alcohol Use Disorders: Pharmacology forest plots

Comparison: 01 Disulfiram (Oral) versus Placebo (or 1g Disulfiram)
 Outcome: 05 Drinking measures



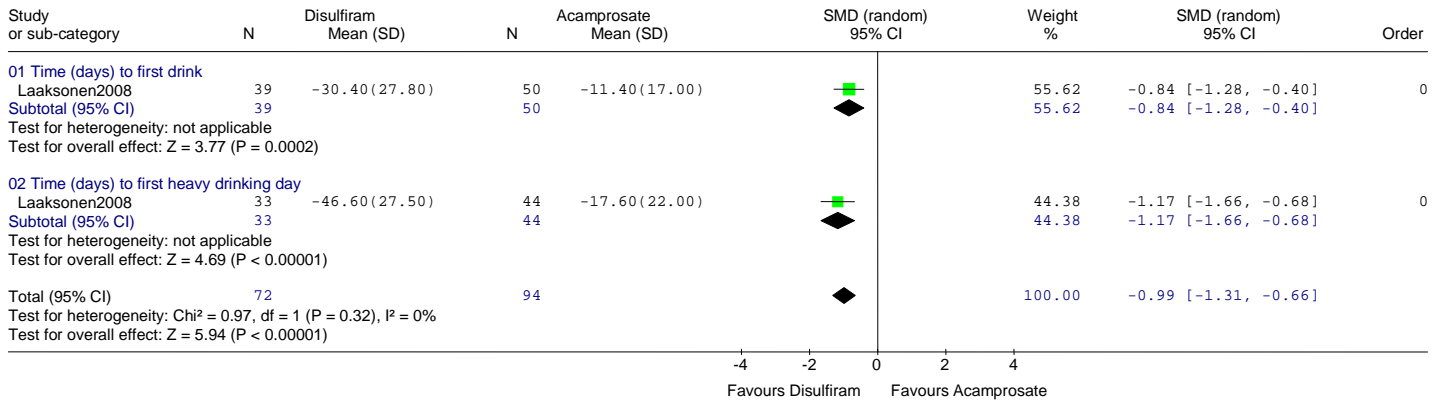
9.2 Disulfiram versus acamprosate

Comparison: 02 Disulfiram versus acamprosate
 Outcome: 01 Discontinued study - Leaving study for any reason

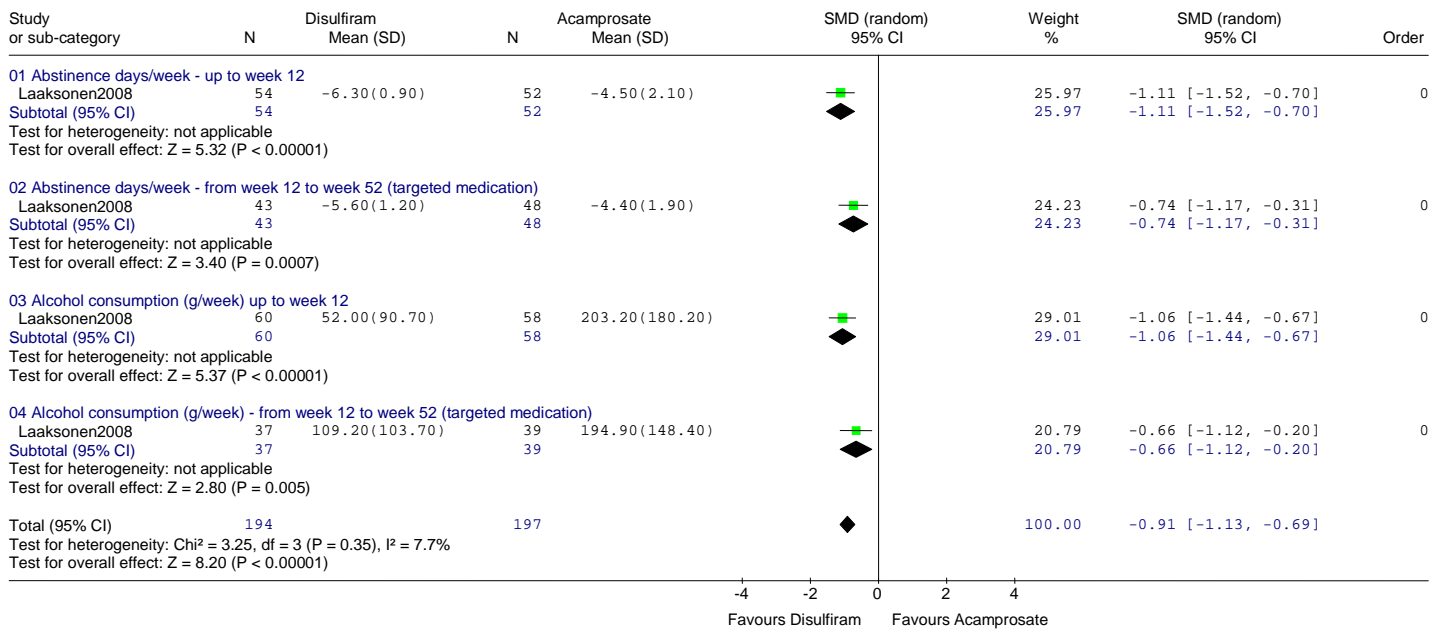


Alcohol Use Disorders: Pharmacology forest plots

Comparison: 02 Disulfiram versus acamprosate
 Outcome: 02 Time (days) to first drink / heavy drinking day



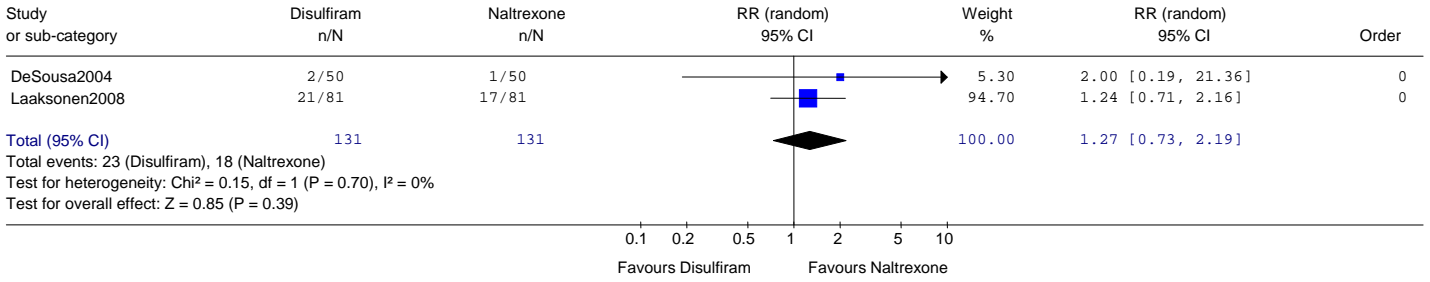
Comparison: 02 Disulfiram versus acamprosate
 Outcome: 03 Drinking measures



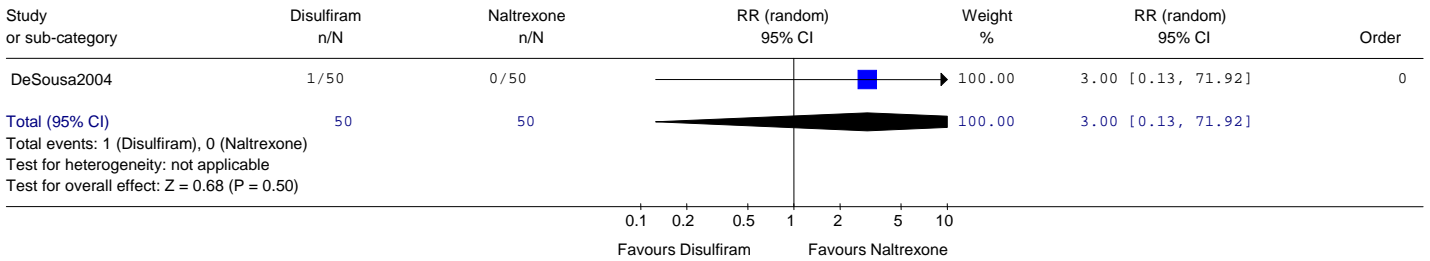
Alcohol Use Disorders: Pharmacology forest plots

9.3 Disulfiram versus naltrexone

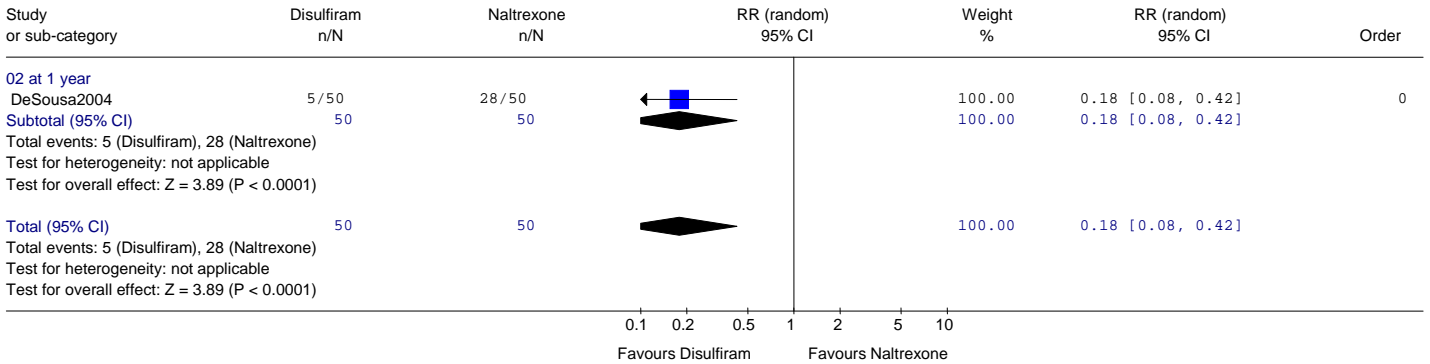
Comparison: 03 Disulfiram versus naltrexone
 Outcome: 01 Discontinued study - Leaving study for any reason



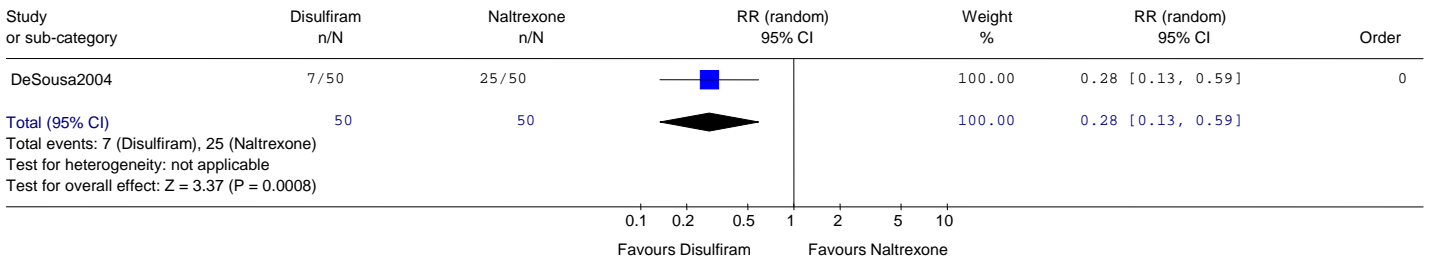
Comparison: 03 Disulfiram versus naltrexone
 Outcome: 02 Leaving due to adverse events



Comparison: 03 Disulfiram versus naltrexone
 Outcome: 03 Lapsed (Individuals drinking any alcohol/ not abstinent)

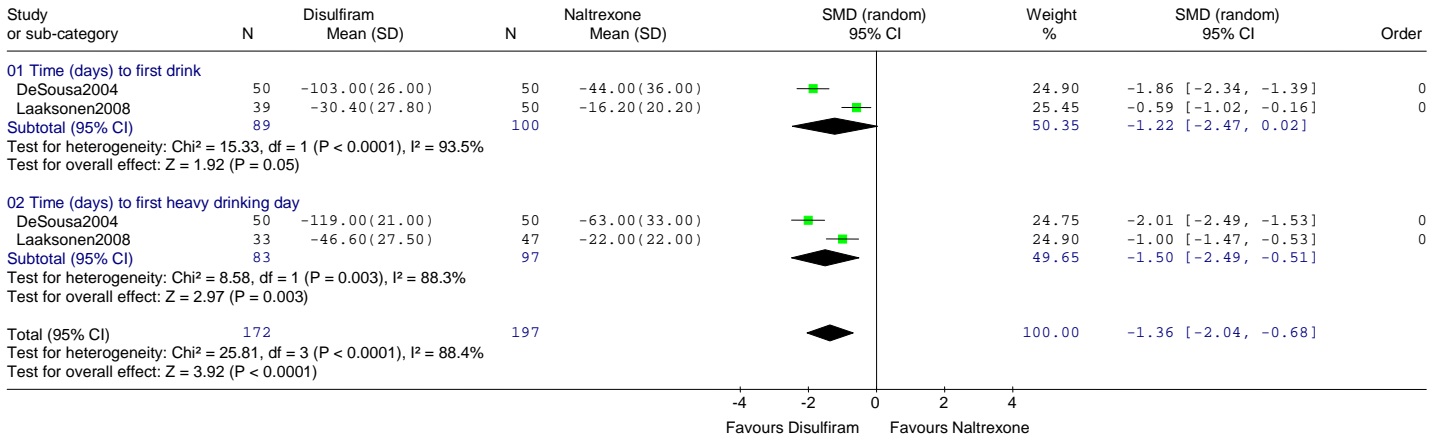


Comparison: 03 Disulfiram versus naltrexone
 Outcome: 04 Relapsed to heavy drinking

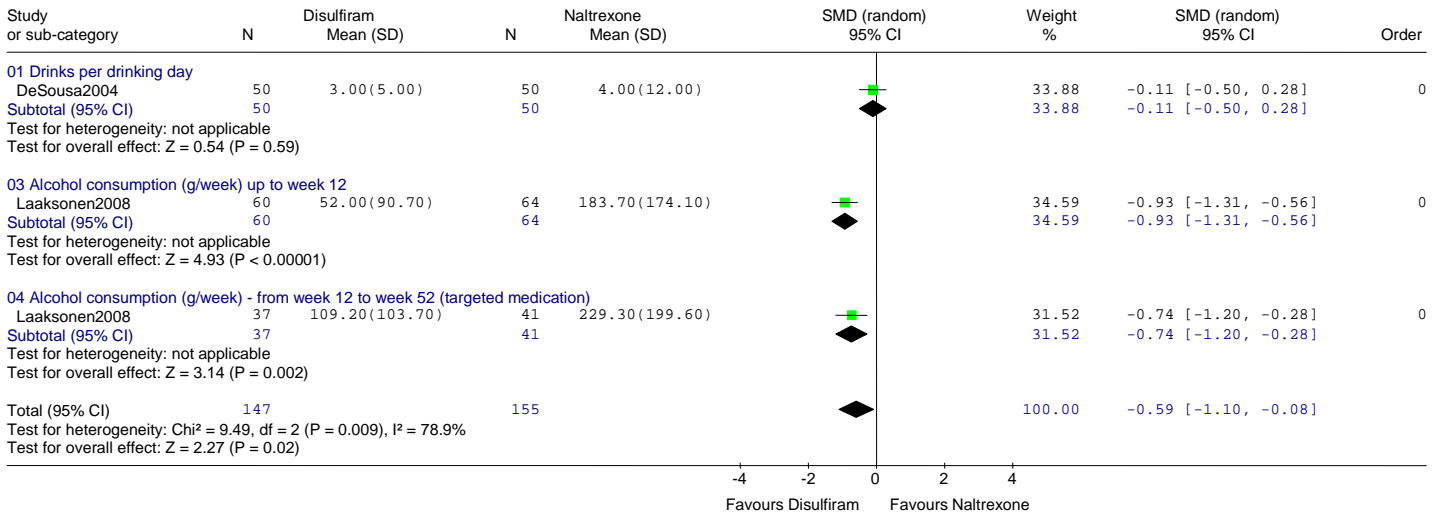


Alcohol Use Disorders: Pharmacology forest plots

Comparison: 03 Disulfiram versus naltrexone
 Outcome: 05 Time (days) to first drink / heavy drinking day

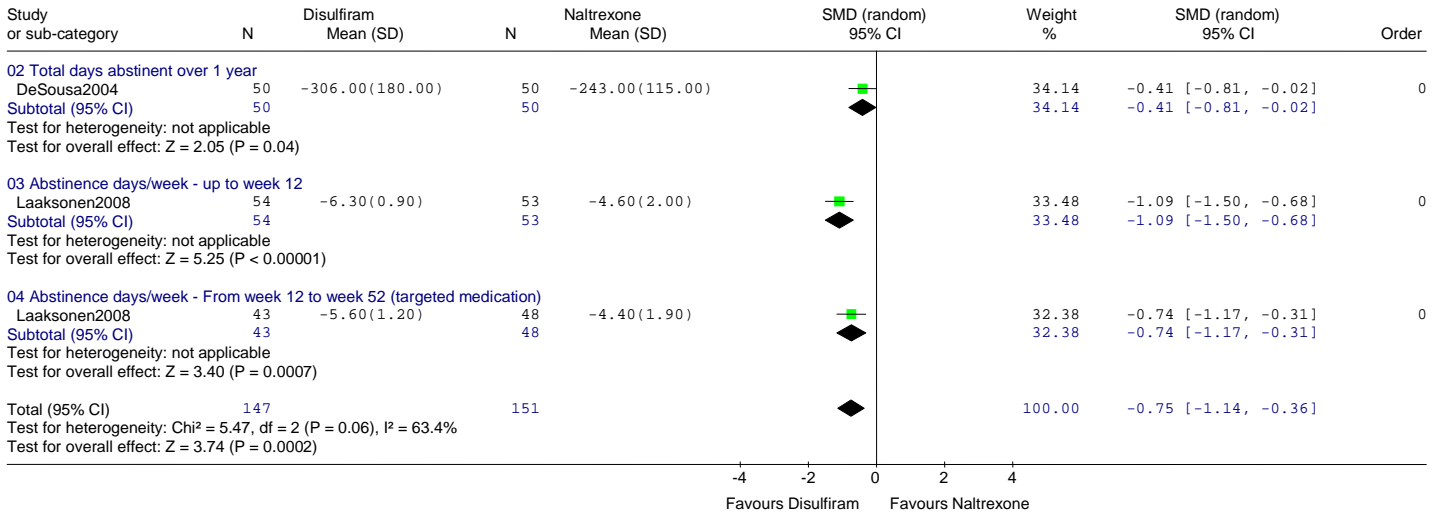


Comparison: 03 Disulfiram versus naltrexone
 Outcome: 06 Drinking measures



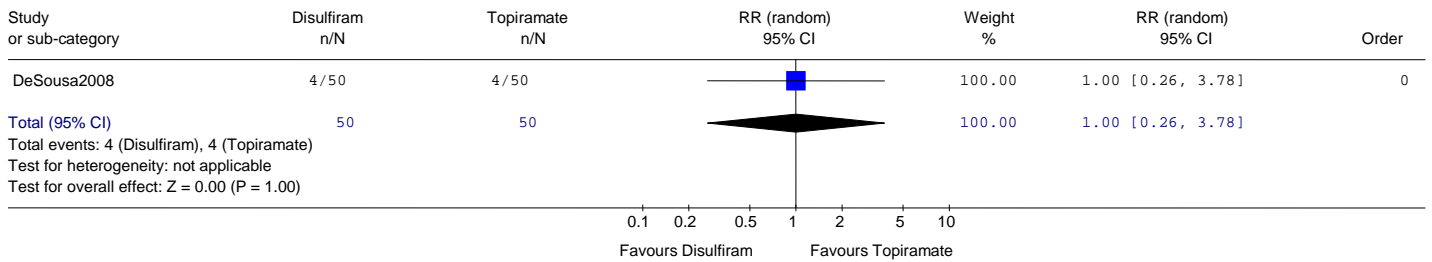
Alcohol Use Disorders: Pharmacology forest plots

Comparison: 03 Disulfiram versus naltrexone
 Outcome: 07 Abstinence measures

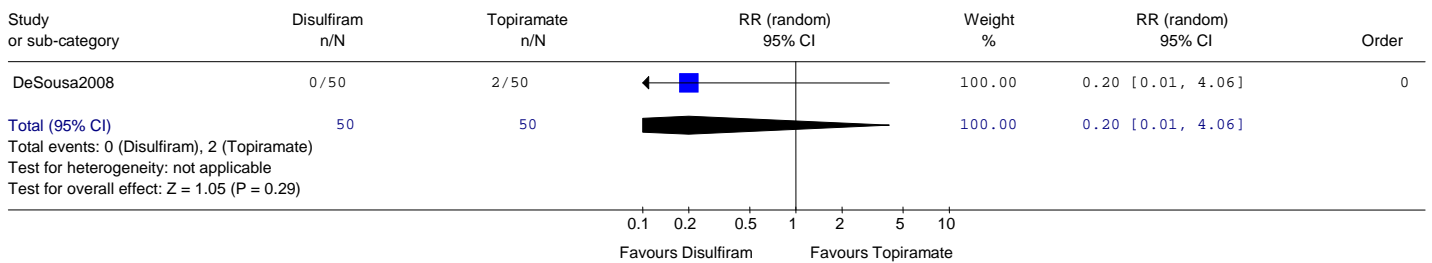


9.4 Disulfiram versus topiramate

Comparison: 07 Disulfiram versus topiramate
 Outcome: 01 Leaving study early

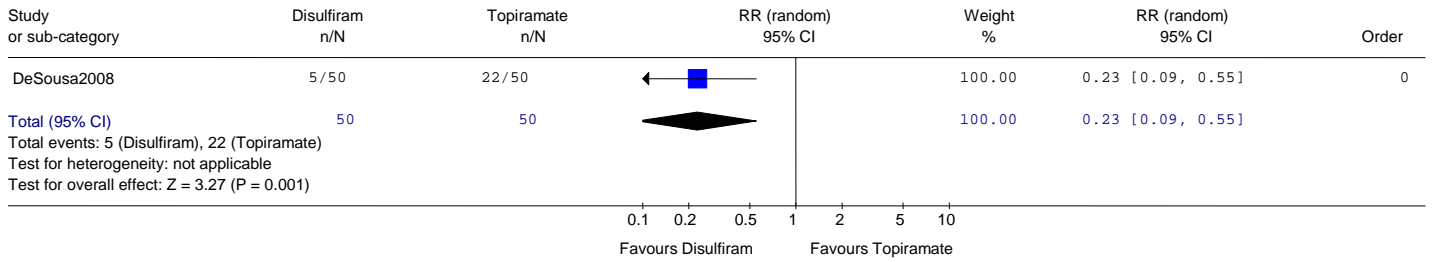


Comparison: 07 Disulfiram versus topiramate
 Outcome: 02 Leaving study due to adverse events

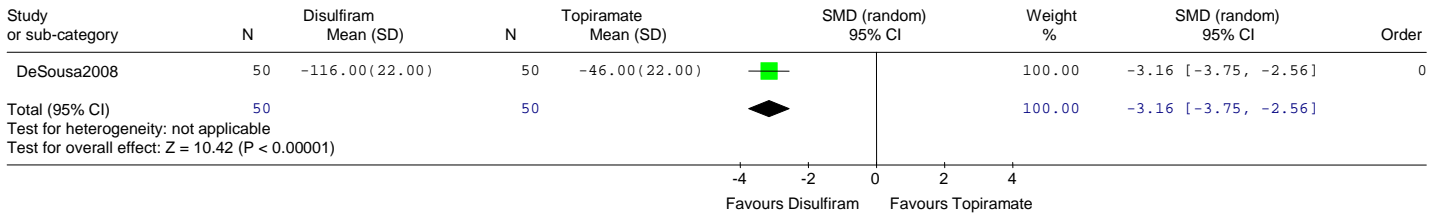


Alcohol Use Disorders: Pharmacology forest plots

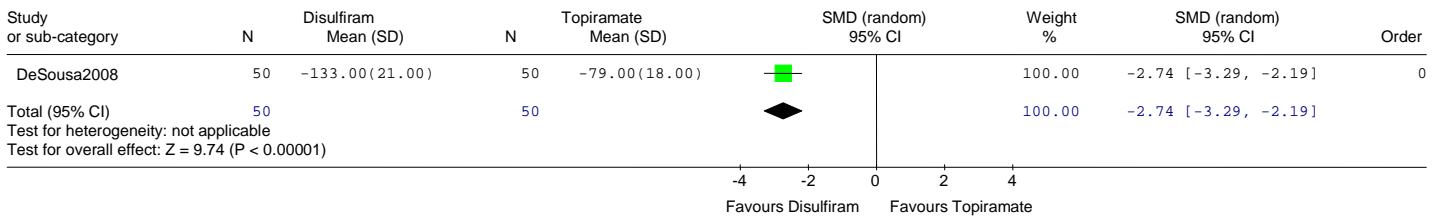
Comparison: 07 Disulfiram versus topiramate
 Outcome: 04 Relapsed to heavy drinking



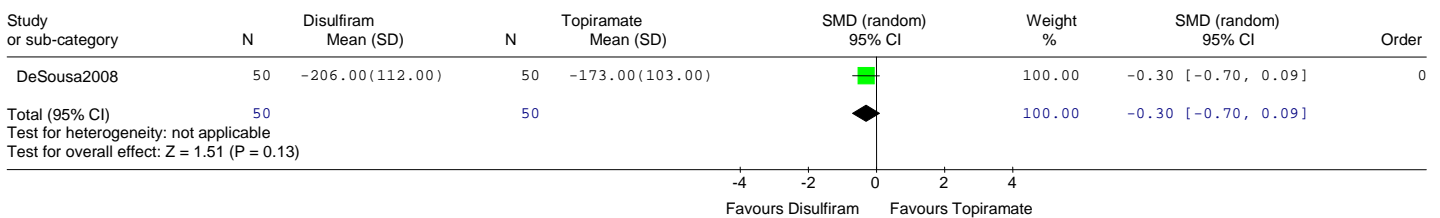
Comparison: 07 Disulfiram versus topiramate
 Outcome: 05 Days to first drink



Comparison: 07 Disulfiram versus topiramate
 Outcome: 06 Days to first relapse



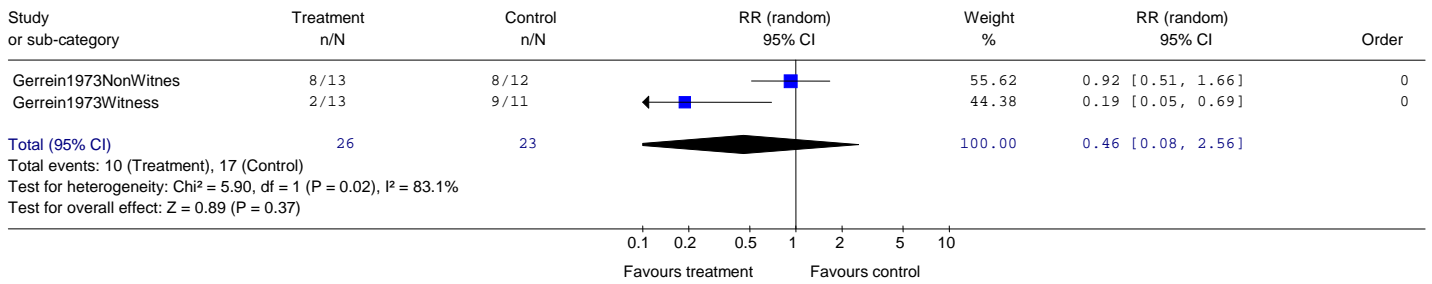
Comparison: 07 Disulfiram versus topiramate
 Outcome: 07 Total days of abstinence



Alcohol Use Disorders: Pharmacology forest plots

9.5 Disulfiram + counselling versus counselling

Comparison: 08 Disulfiram + counselling versus counselling
 Outcome: 01 Discontinued study - Leaving study for any reason



Comparison: 08 Disulfiram + counselling versus counselling
 Outcome: 02 Lapsed (Individuals drinking any alcohol/ not abstinent)

