

## Appendix 17d: pharmacological interventions forest plots

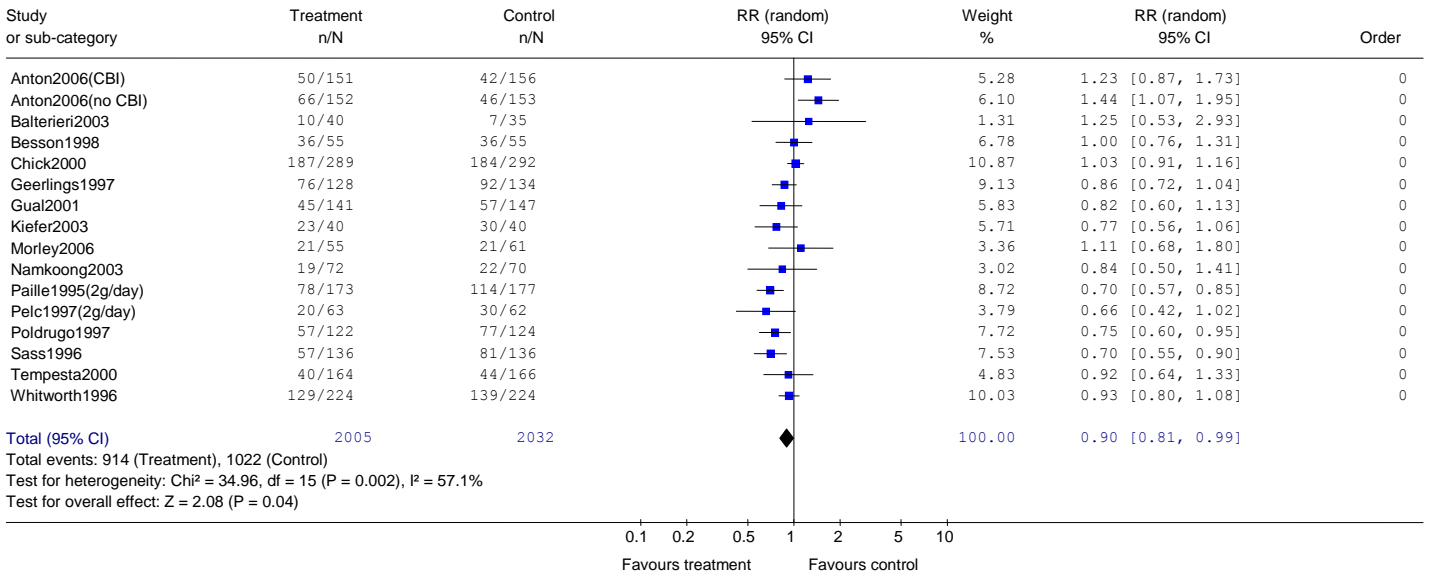
Acamprosate for alcohol-use disorders .....	2
Acamprosate versus placebo .....	2
Naltrexone .....	7
Naltrexone versus placebo .....	7
Naltrexone versus acamprosate .....	13
Naltrexone + sertraline versus naltrexone.....	16
Naltrexone versus topiramate .....	18
Naltrexone + acamprosate .....	20
Naltrexone + acamprosate versus placebo .....	20
Naltrexone + acamprosate versus acamprosate .....	22
Naltrexone + acamprosate versus naltrexone.....	24
Disulfiram.....	26
Disulfiram versus placebo.....	26
Disulfiram versus acamprosate .....	27
Disulfiram versus naltrexone.....	28
Disulfiram versus topiramate .....	31
Disulfiram + counselling versus counselling .....	33

*Note:* c.skills = coping skills; G.couns = group counseling; rel.prev = relapse prevention; PCM = primary care management; Cog Beh = CBT

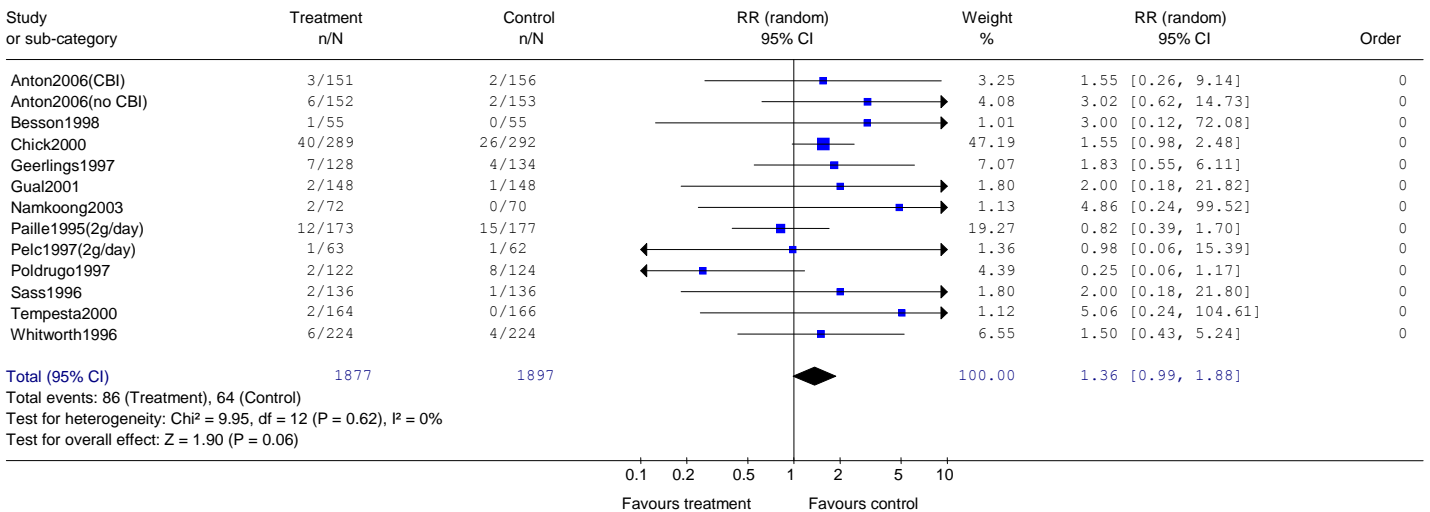
# Acamprosate for alcohol-use disorders

## Acamprosate versus placebo

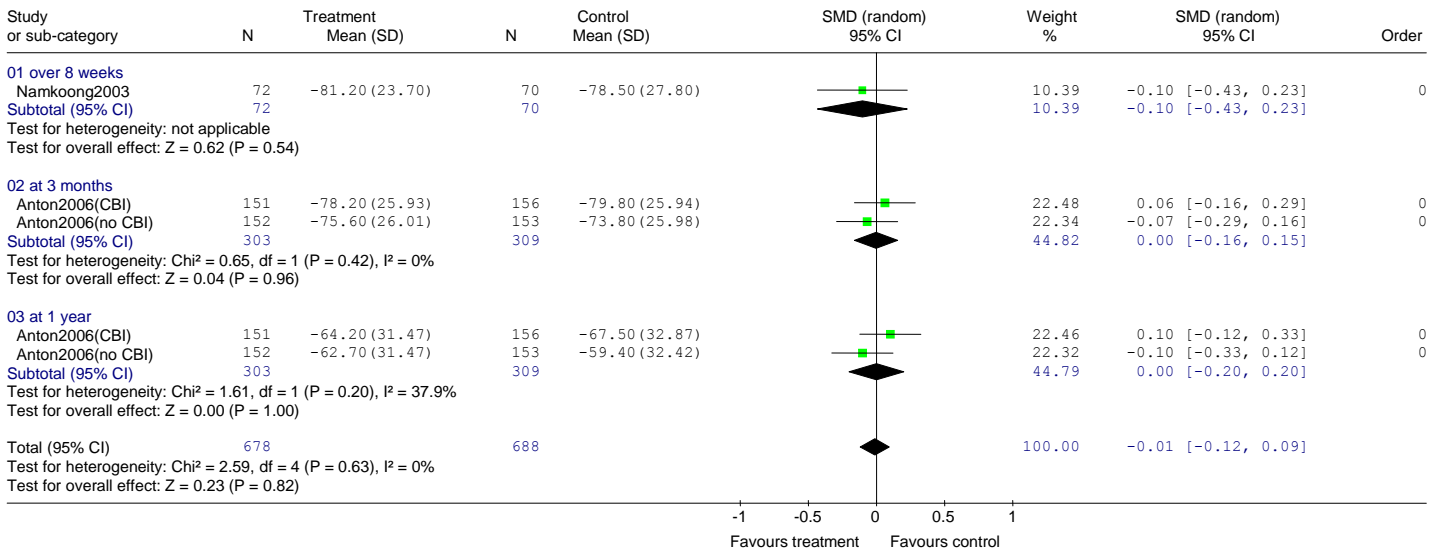
Comparison: 01 Acamprosate versus placebo  
 Outcome: 01 Discontinued treatment (leaving study early)



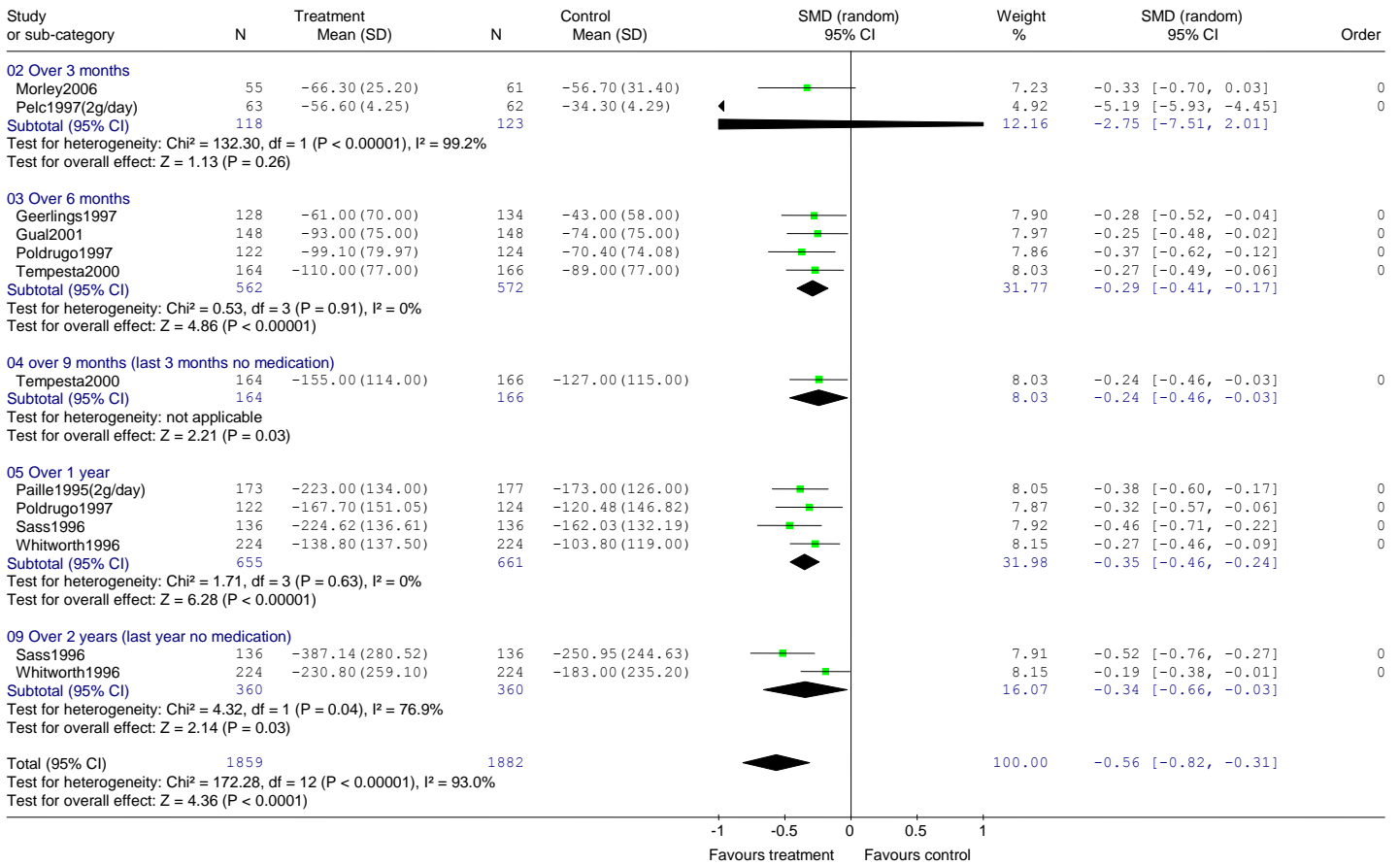
Comparison: 01 Acamprosate versus placebo  
 Outcome: 02 Leaving due to adverse event



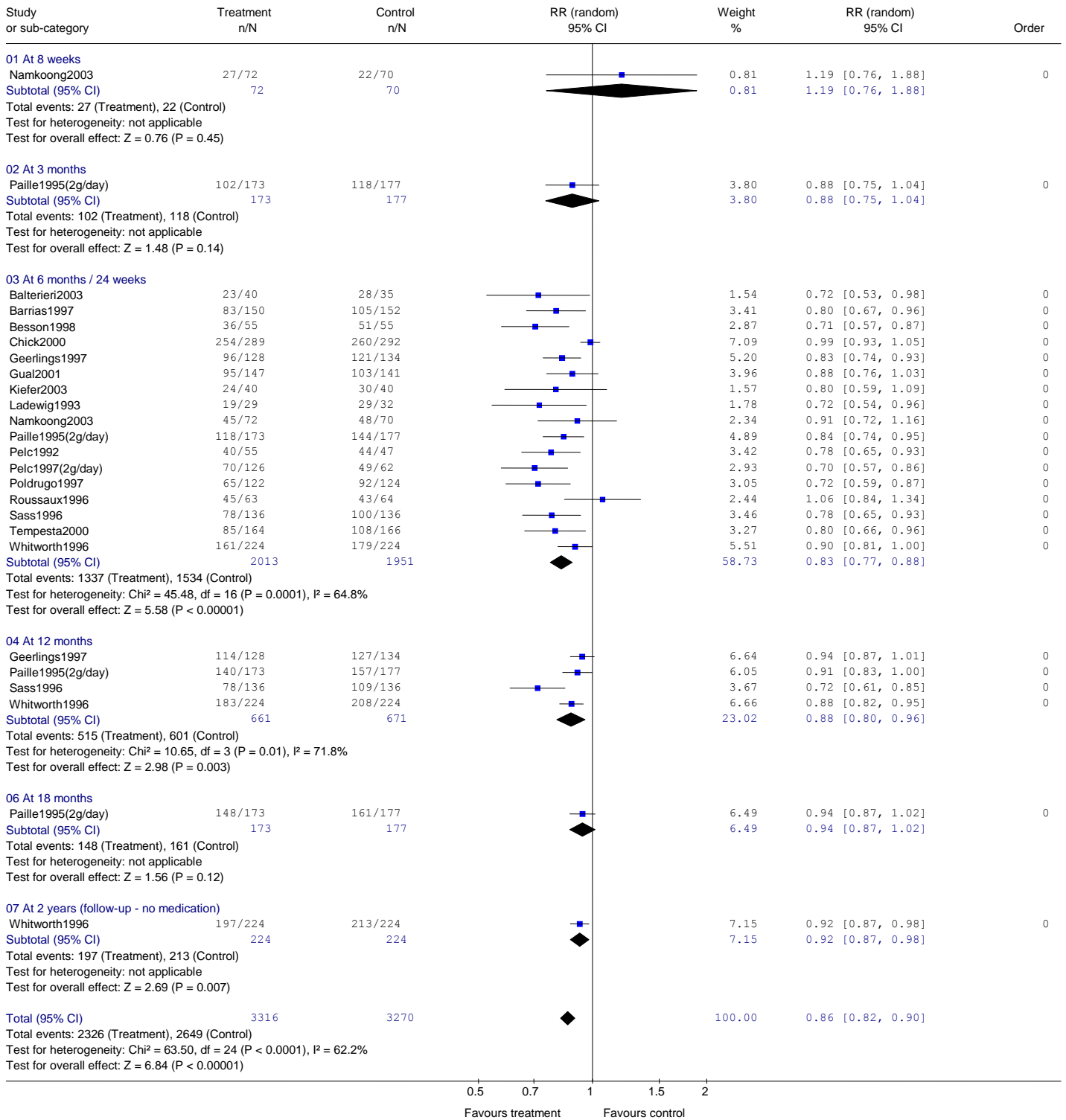
Comparison: 01 Acamprosate versus placebo  
 Outcome: 03 % days abstinent



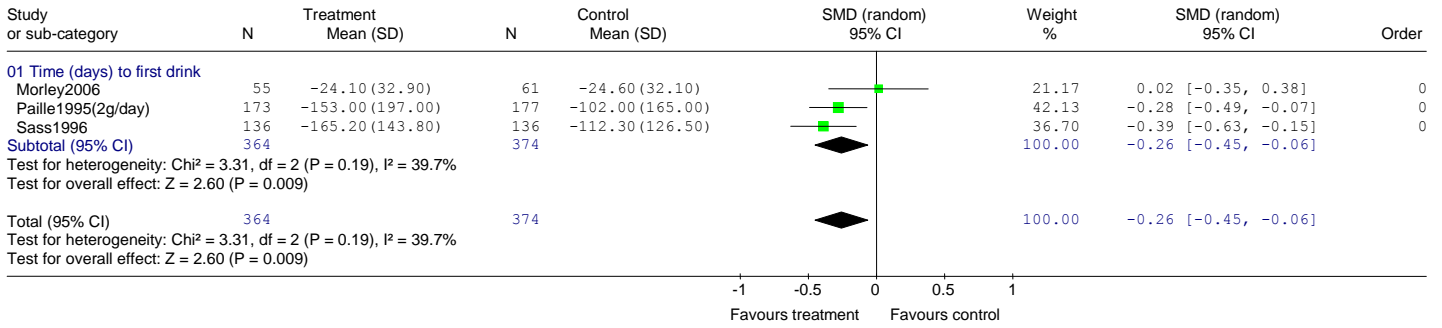
Comparison: 01 Acamprosate versus placebo  
 Outcome: 06 Cumulative abstinence duration (all in)



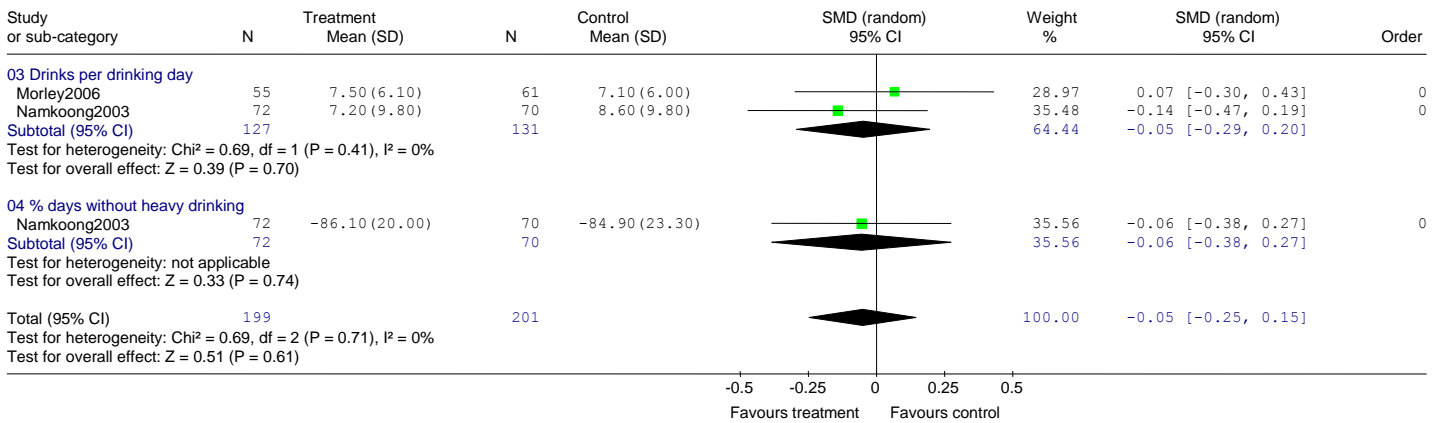
Comparison: 01 Acamprosate versus placebo  
 Outcome: 07 Lapsed (individuals drinking any alcohol/ non-abstinent)



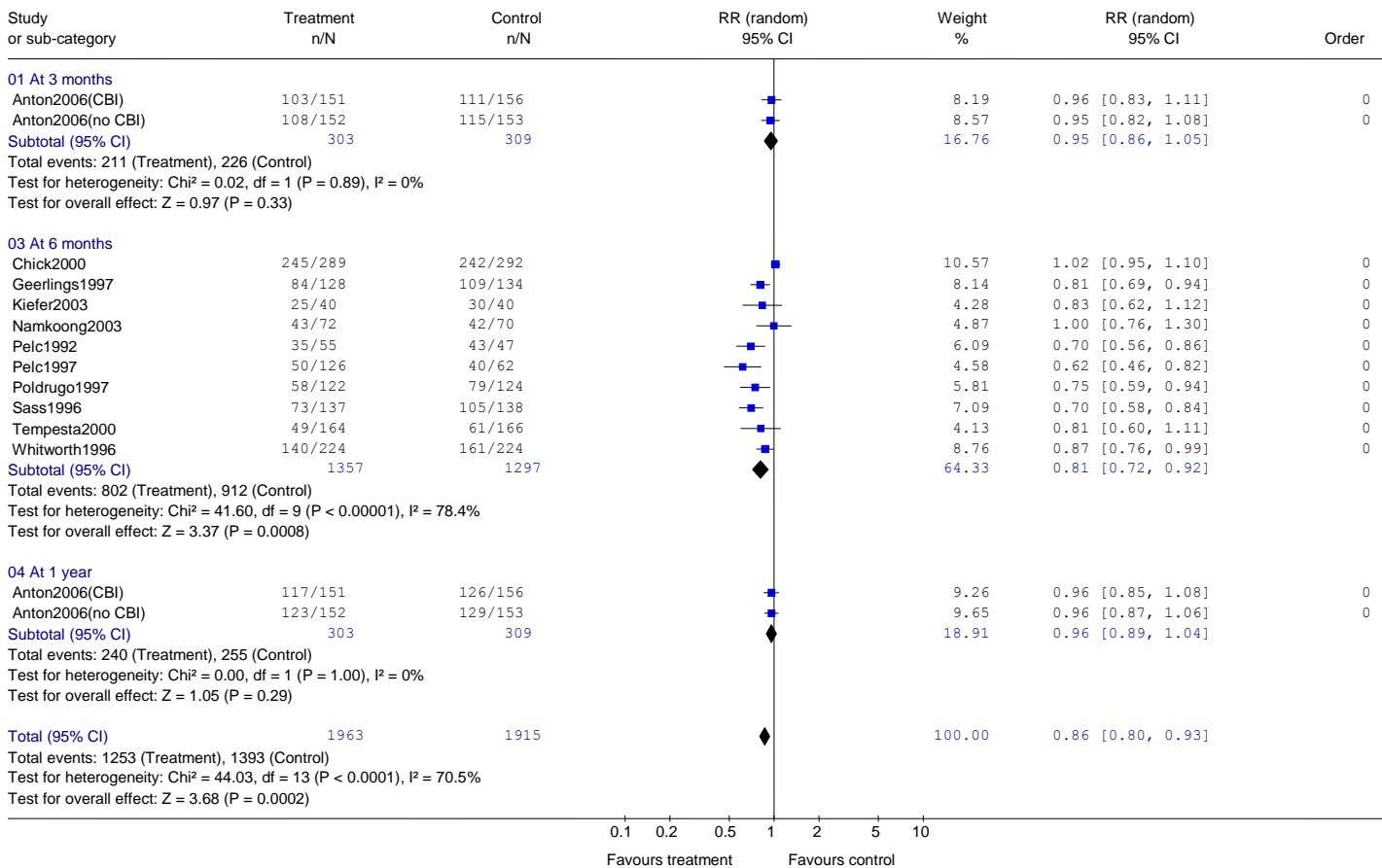
Comparison: 01 Acamprosate versus placebo  
 Outcome: 08 Time to first drink



Comparison: 01 Acamprosate versus placebo  
 Outcome: 10 Drinking severity



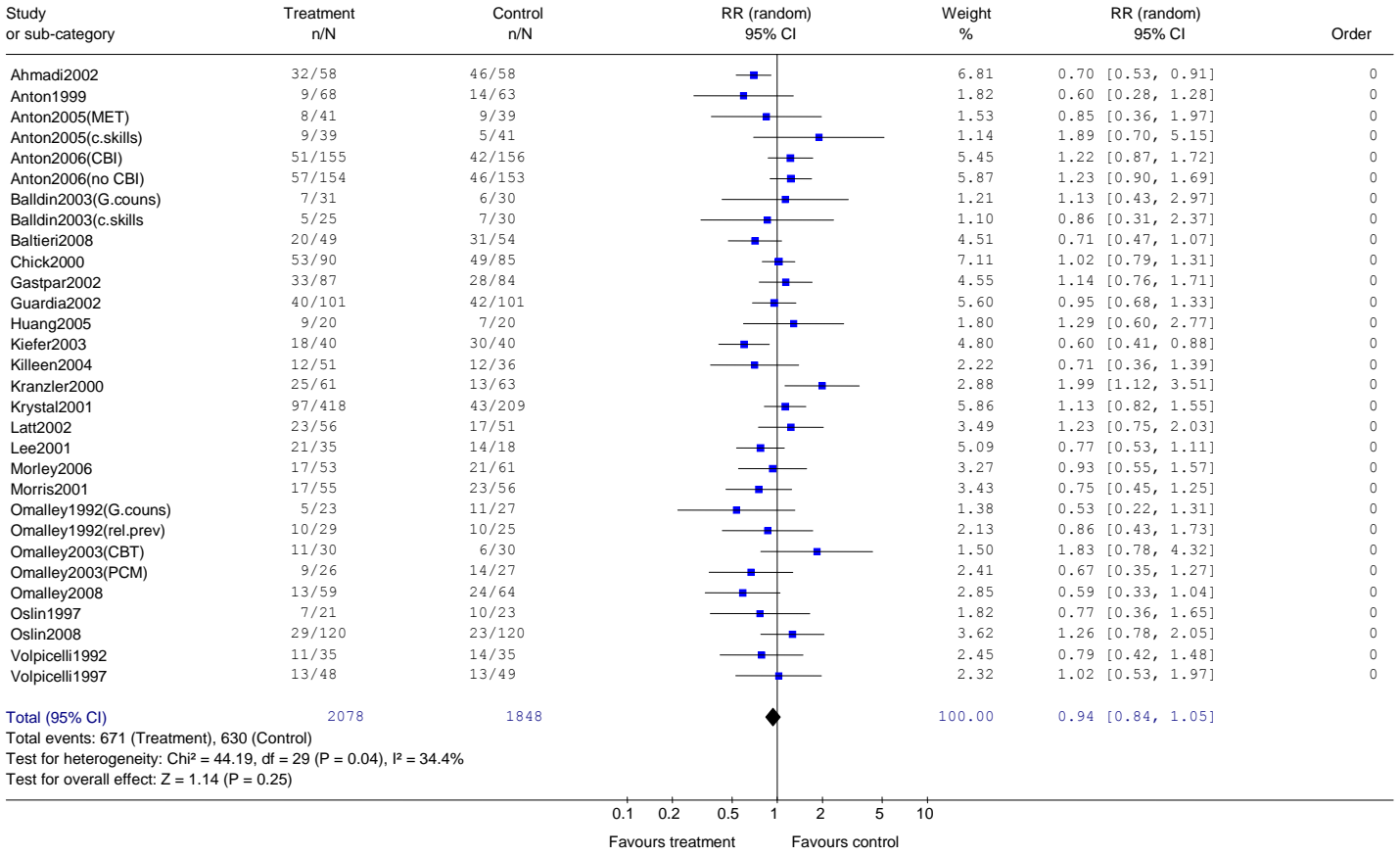
Comparison: 01 Acamprosate versus placebo  
 Outcome: 11 Relapsed to heavy drinking (5+ drinks for men, 4+ for women)



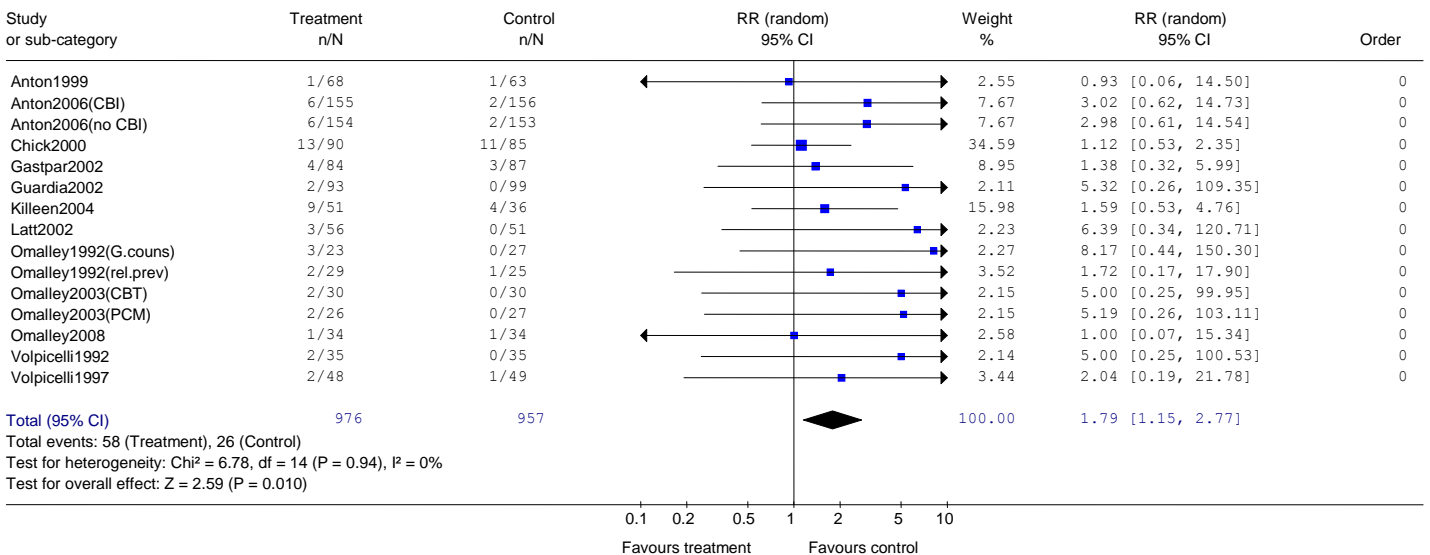
# Naltrexone

## Naltrexone versus placebo

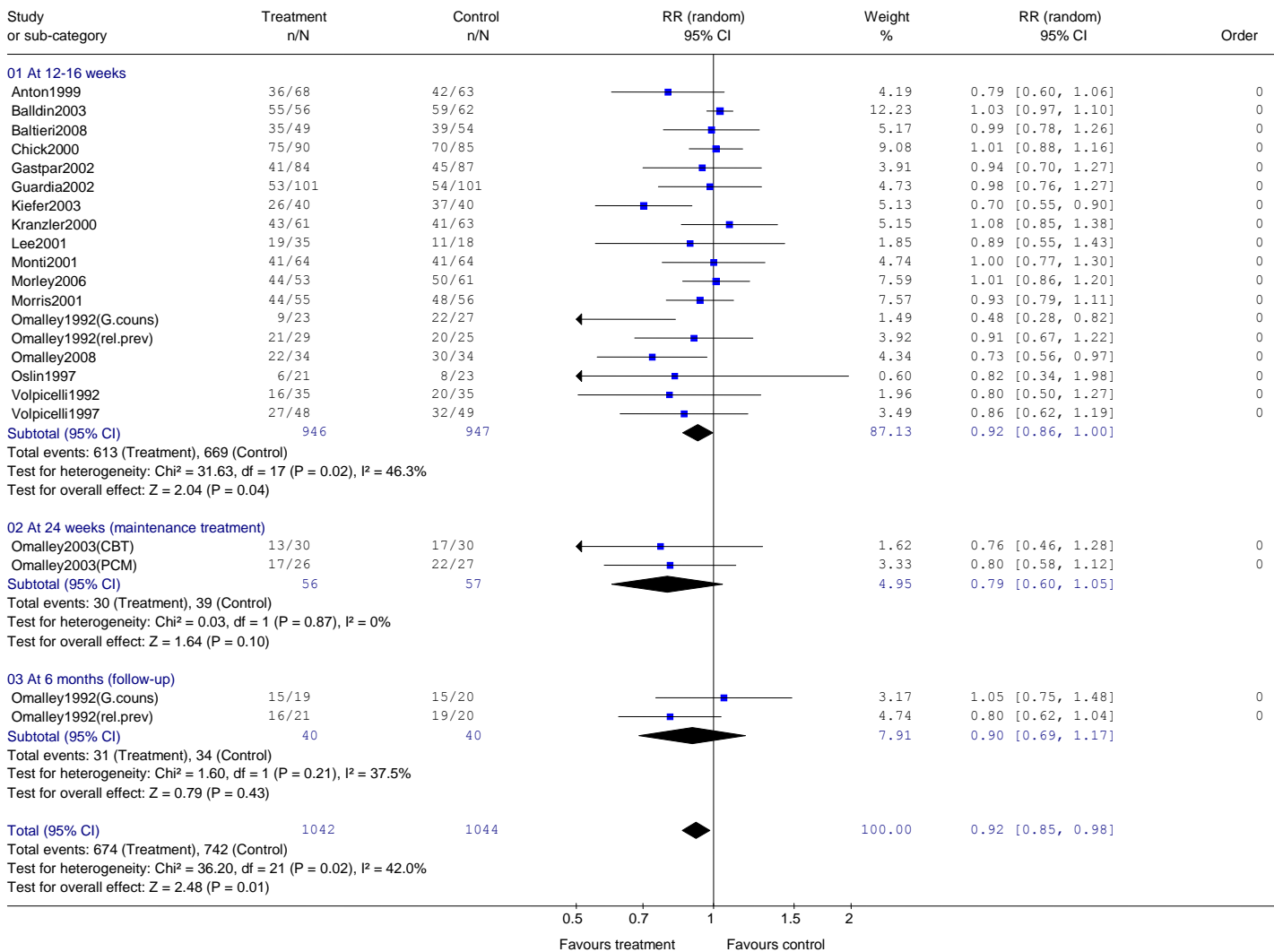
Comparison: 01 Naltrexone versus placebo  
 Outcome: 01 Discontinued treatment (leaving study early)



Comparison: 01 Naltrexone versus placebo  
 Outcome: 02 Leaving due to adverse events

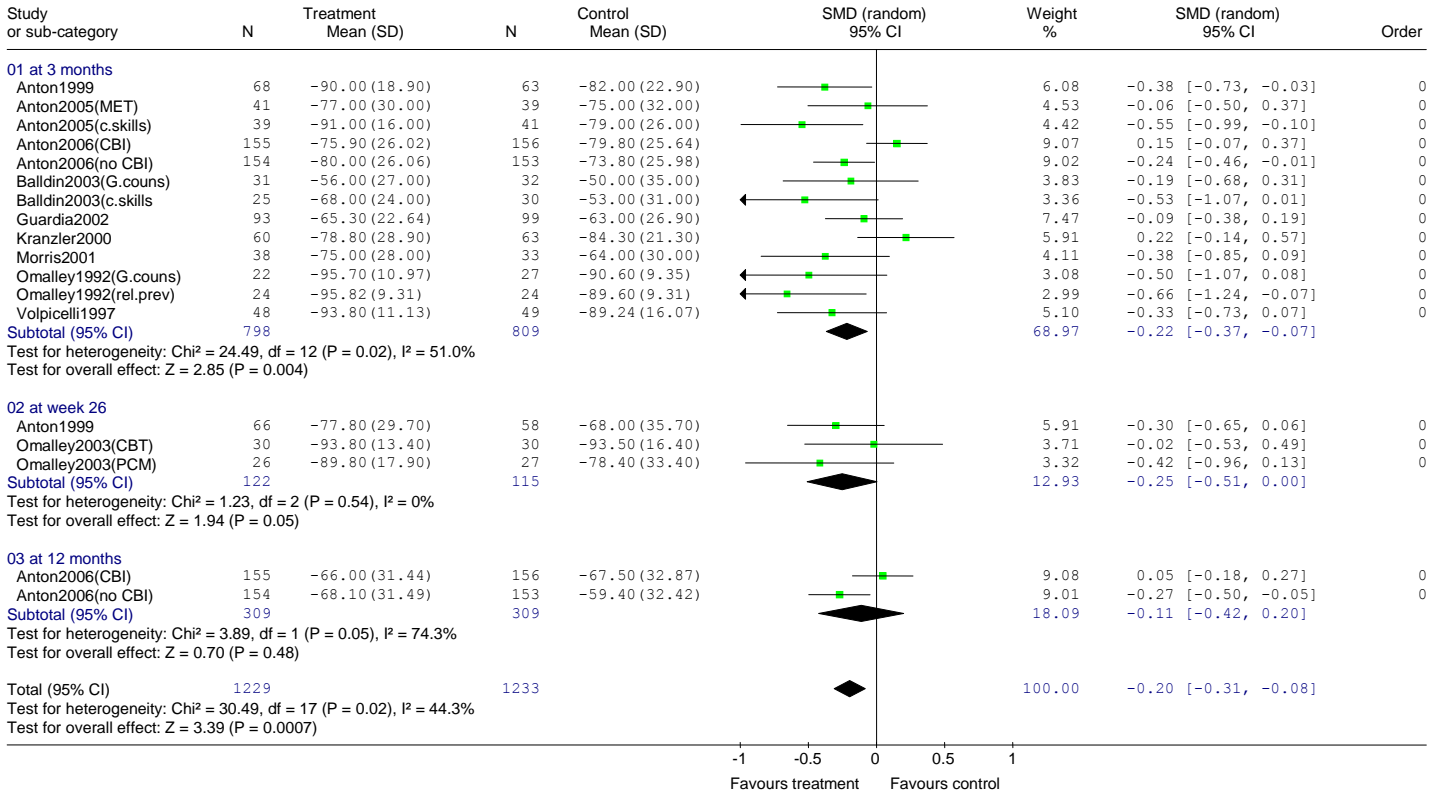


Comparison: 01 Naltrexone versus placebo  
 Outcome: 04 Lapsed (individuals drinking any alcohol/ not abstinent)

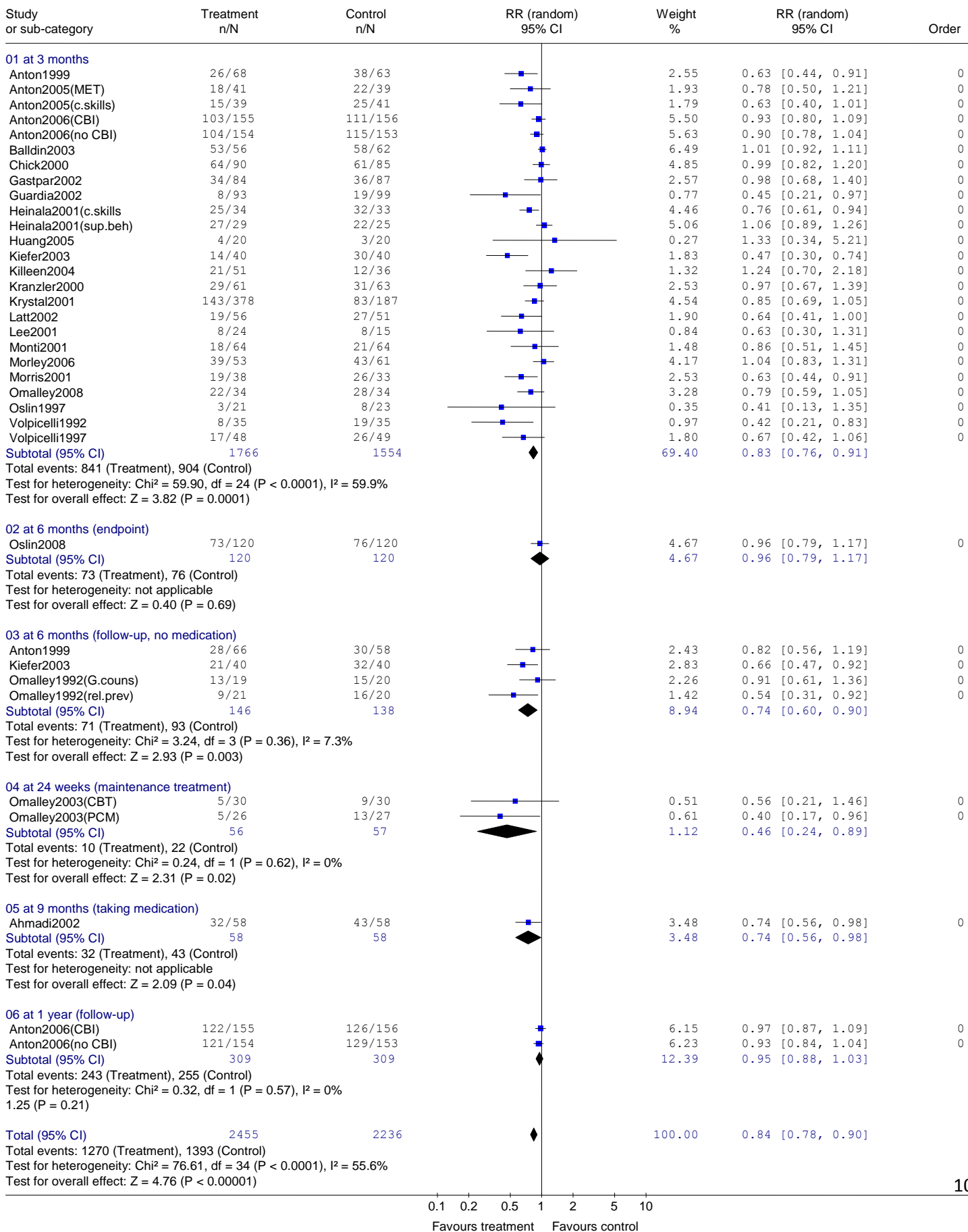




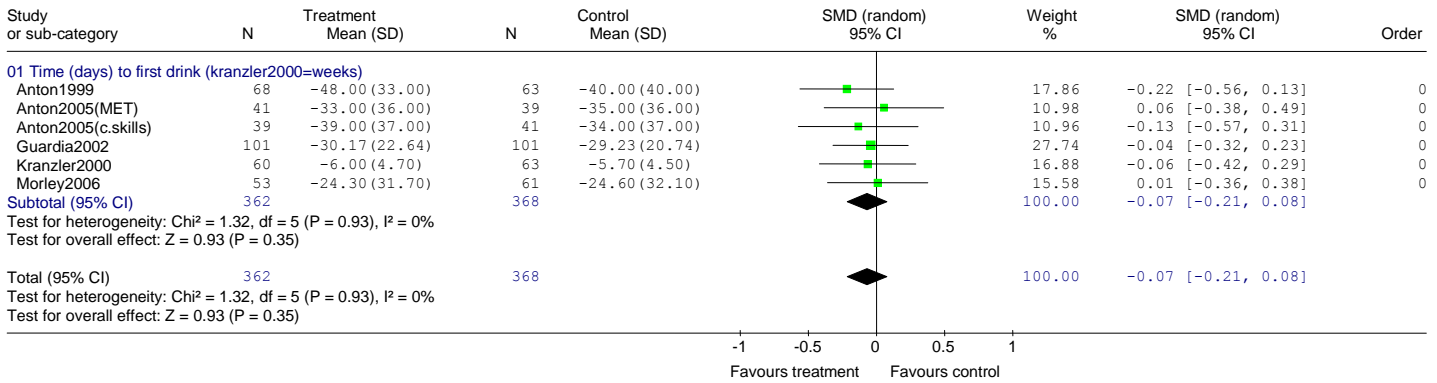
Comparison: 01 Naltrexone versus placebo  
 Outcome: 05 % days abstinent



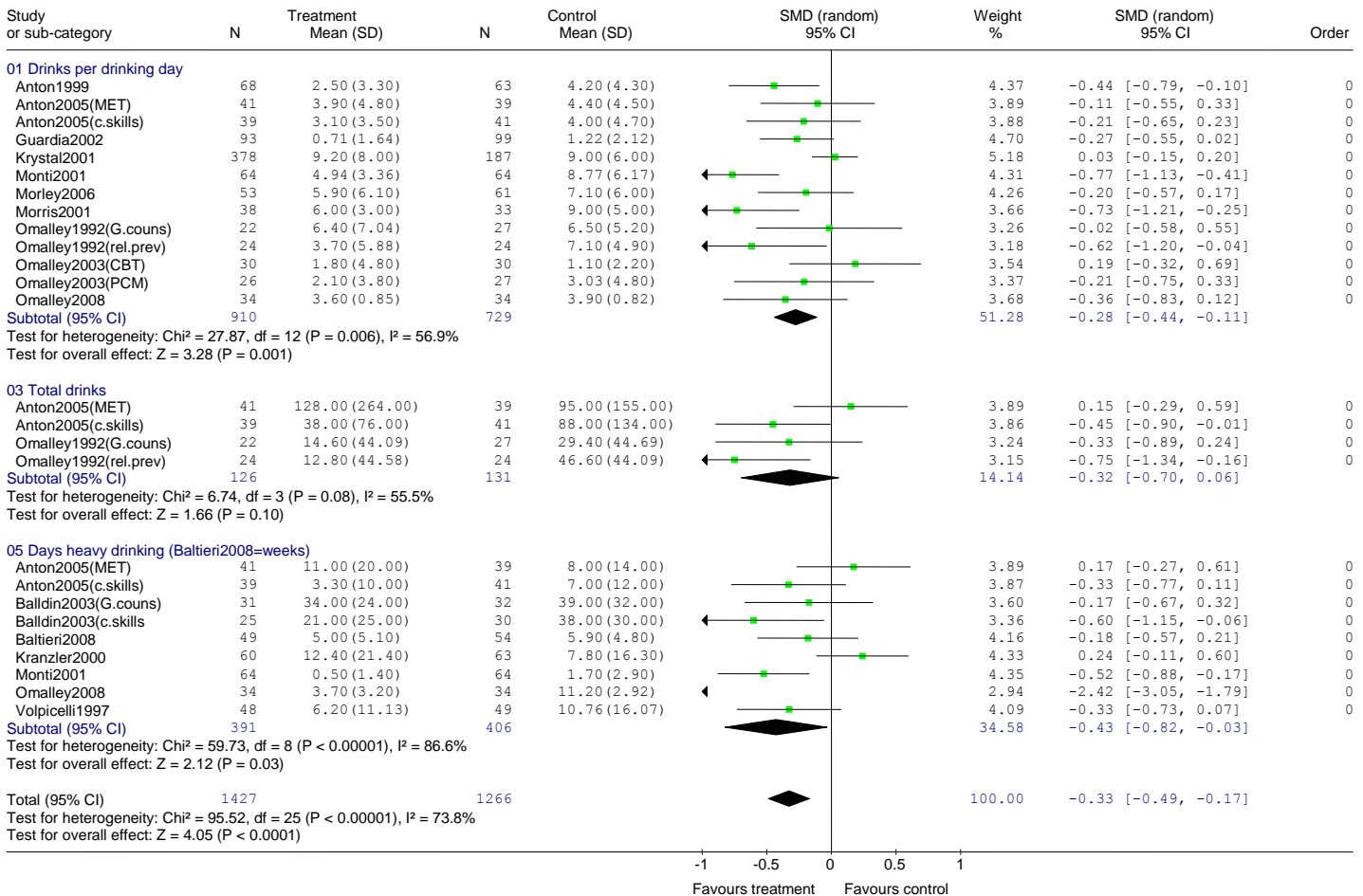
Comparison: 01 Naltrexone versus placebo  
 Outcome: 07 Relapse to heavy drinking



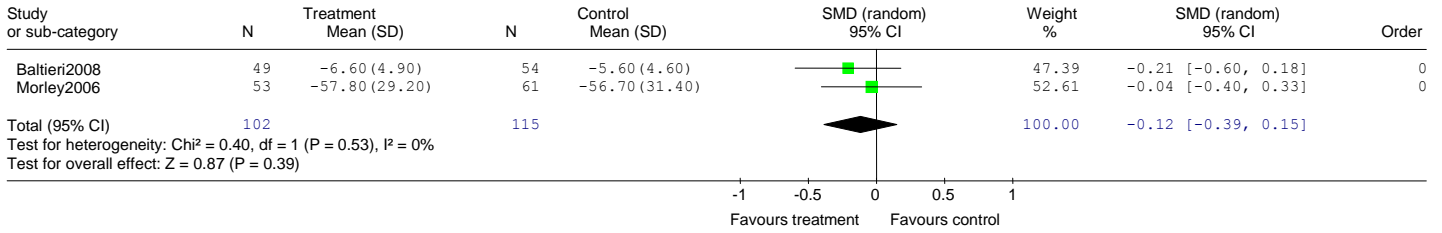
Comparison: 01 Naltrexone versus placebo  
 Outcome: 06 Time to first drink



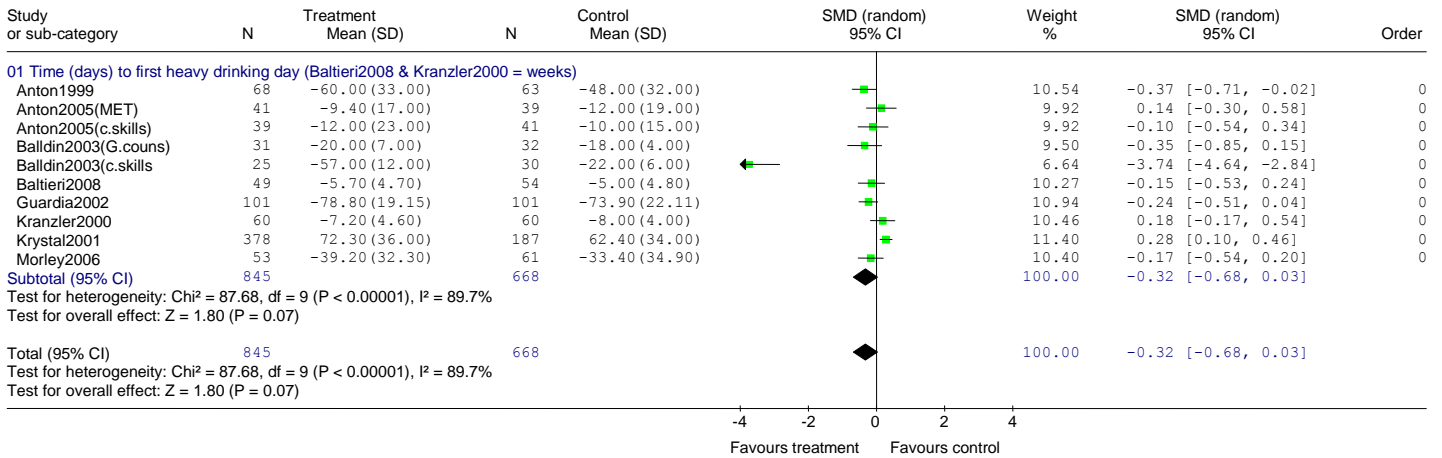
Comparison: 01 Naltrexone versus placebo  
 Outcome: 10 Measures of drinking (at endpoint)



Comparison: 01 Naltrexone versus placebo  
 Outcome: 12 CAD

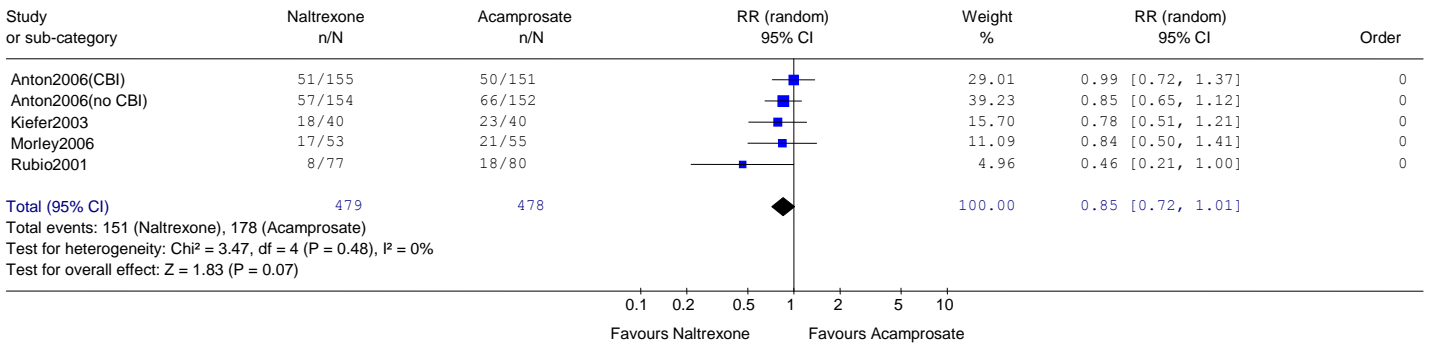


Comparison: 01 Naltrexone versus placebo  
 Outcome: 14 Time to first heavy drinking day

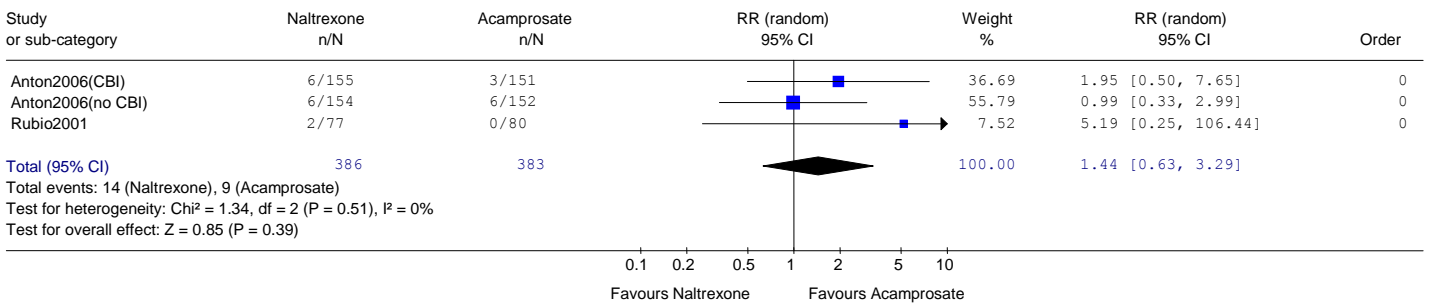


# Naltrexone versus acamprosate

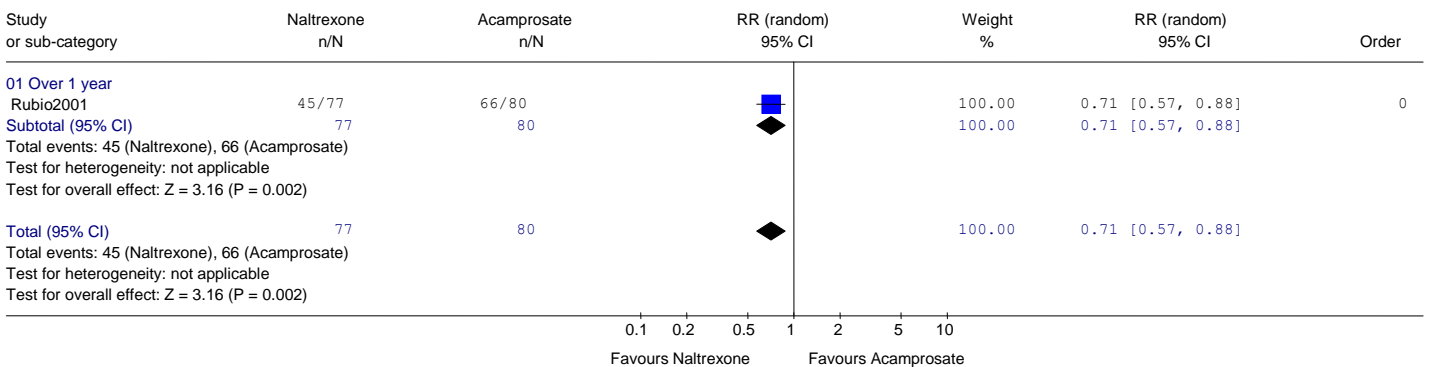
Comparison: 11 Naltrexone versus acamprosate  
 Outcome: 01 Discontinued treatment (Leaving study early)



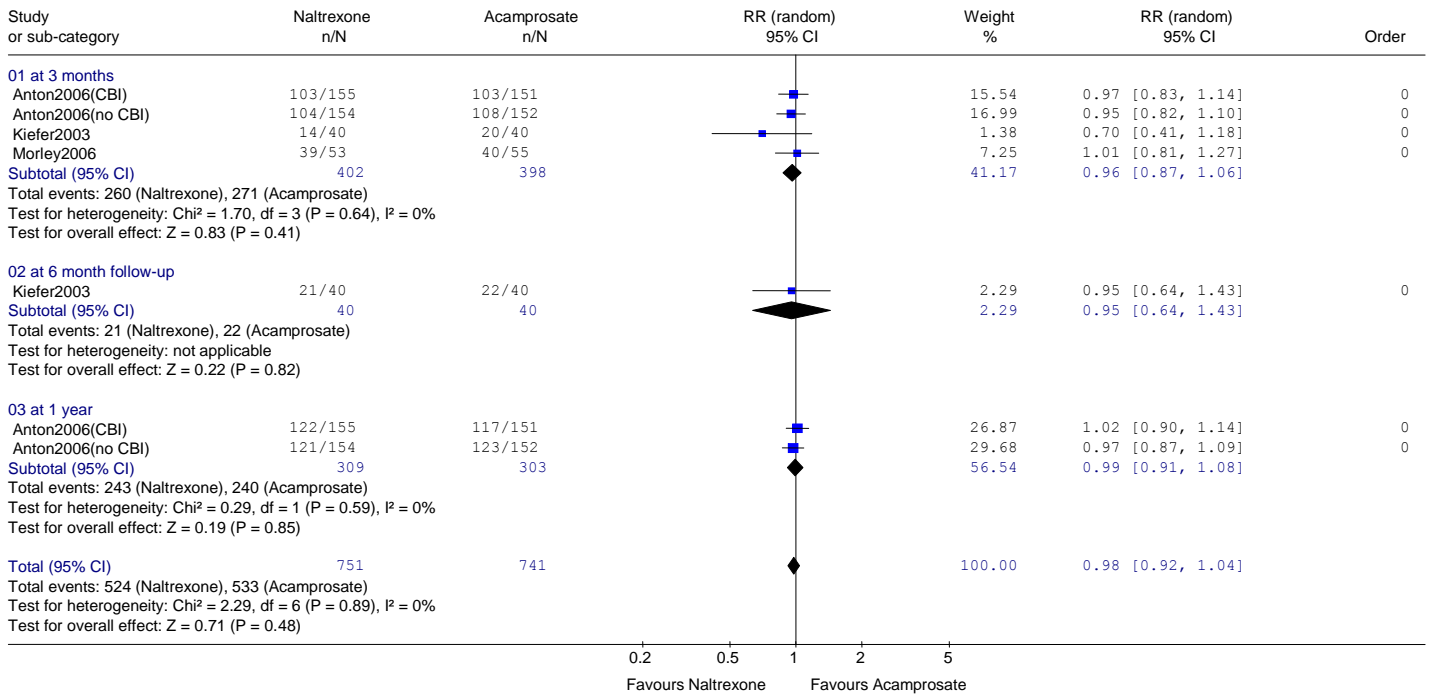
Comparison: 11 Naltrexone versus acamprosate  
 Outcome: 02 Leaving due to adverse events



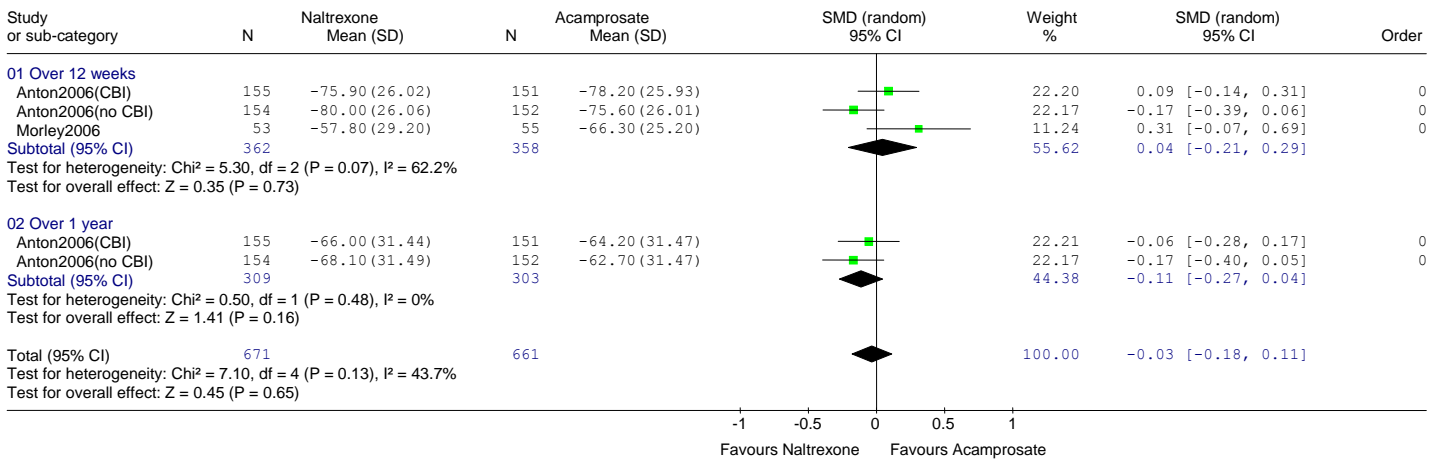
Comparison: 11 Naltrexone vs acamprosate  
 Outcome: 03 Lapsed (individuals drinking any alcohol/ non-abstinent)



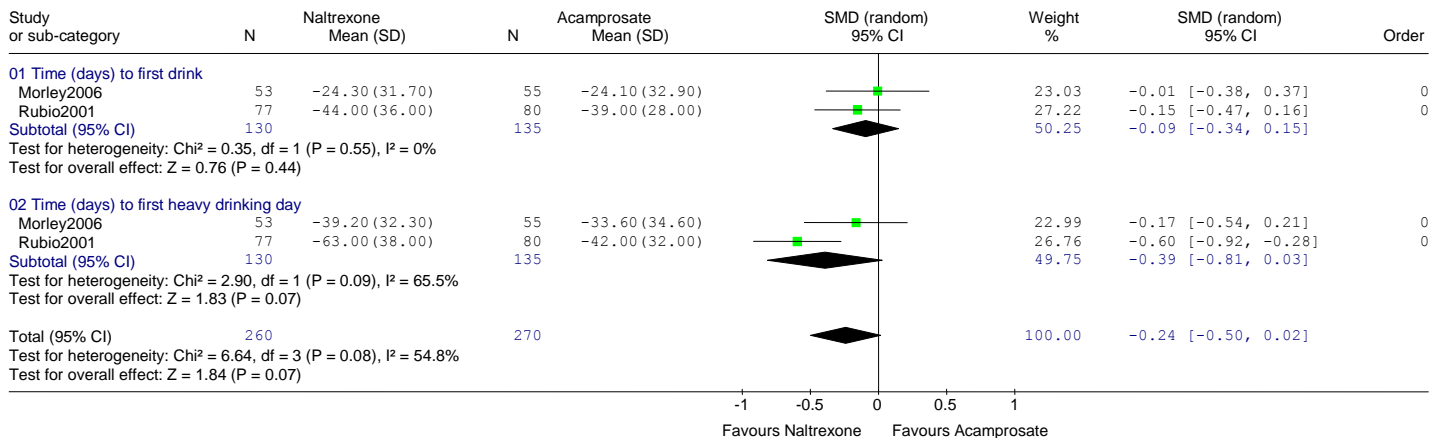
Comparison: 11 Naltrexone vs acamprosate  
 Outcome: 04 Relapsed to heavy drinking at endpoint



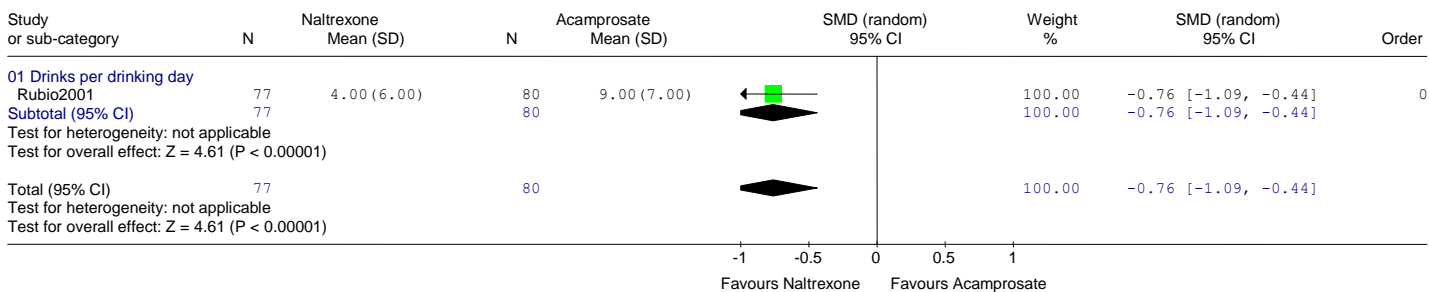
Comparison: 11 Naltrexone versus acamprosate  
 Outcome: 05 % days abstinent



Comparison: 11 Naltrexone versus acamprosate  
 Outcome: 06 Time to first drink / heavy drinking days

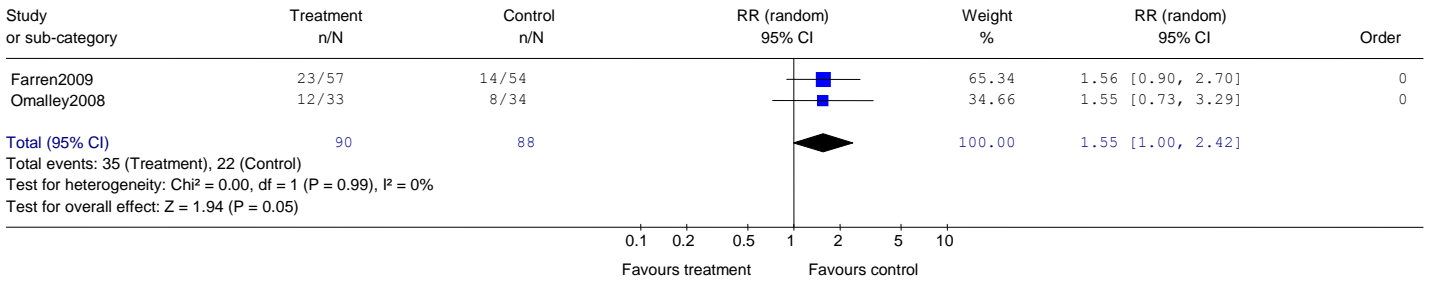


Comparison: 11 Naltrexone vs acamprosate  
 Outcome: 07 Drinking severity

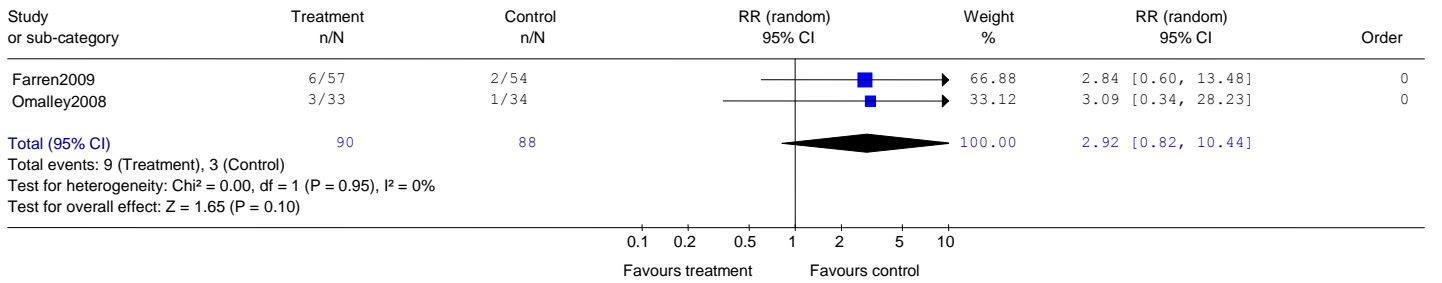


# Naltrexone + sertraline versus naltrexone

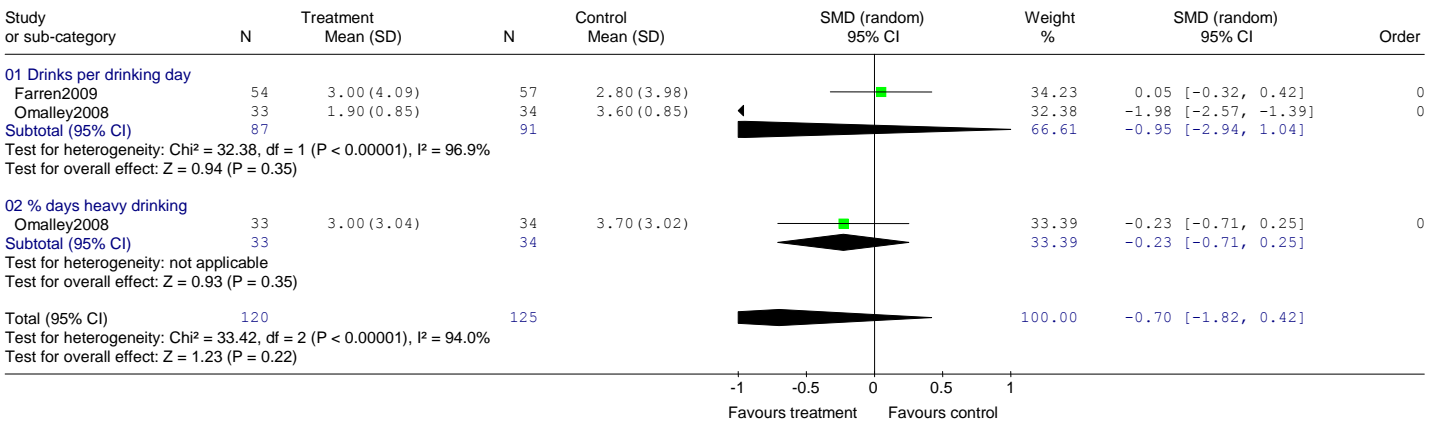
Comparison: 16 Naltrexone + sertraline vs naltrexone  
 Outcome: 01 Leaving study early



Comparison: 16 Naltrexone + sertraline vs naltrexone  
 Outcome: 02 Leaving study due to adverse events

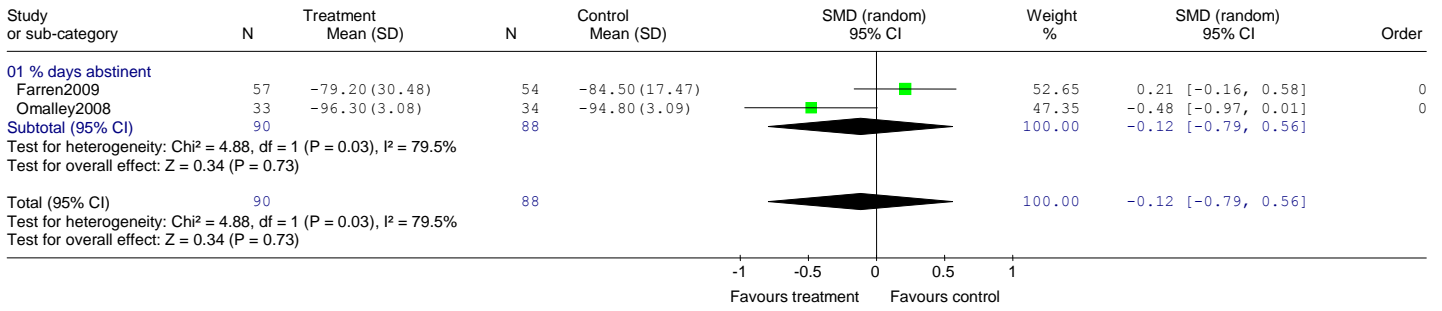


Comparison: 16 Naltrexone + sertraline vs naltrexone  
 Outcome: 03 Drinking severity

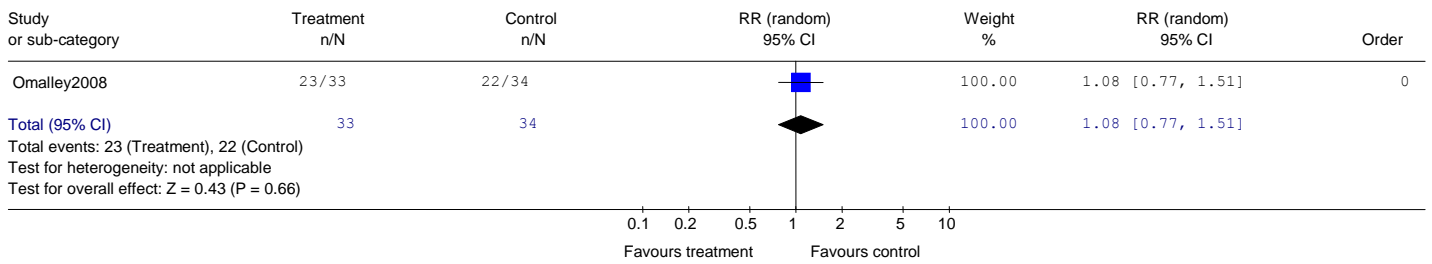




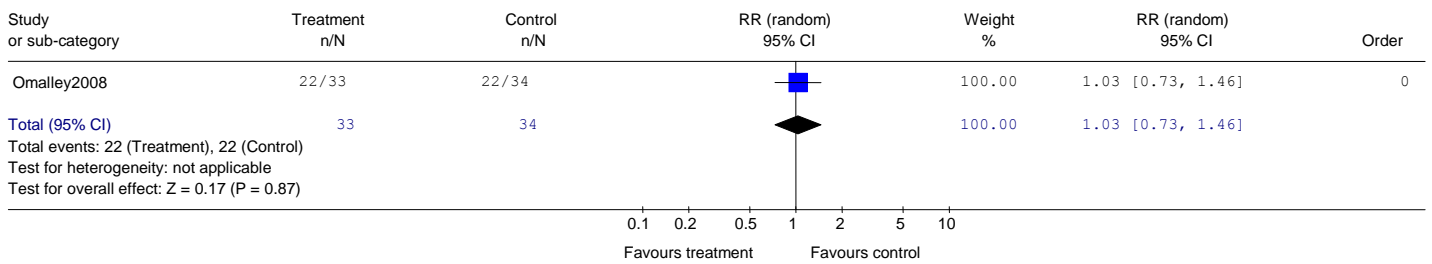
Comparison: 16 Naltrexone + sertraline vs naltrexone  
 Outcome: 04 Drinking frequency



Comparison: 16 Naltrexone + sertraline vs naltrexone  
 Outcome: 05 Lapsed (individuals drinking any alcohol/ not abstinent)

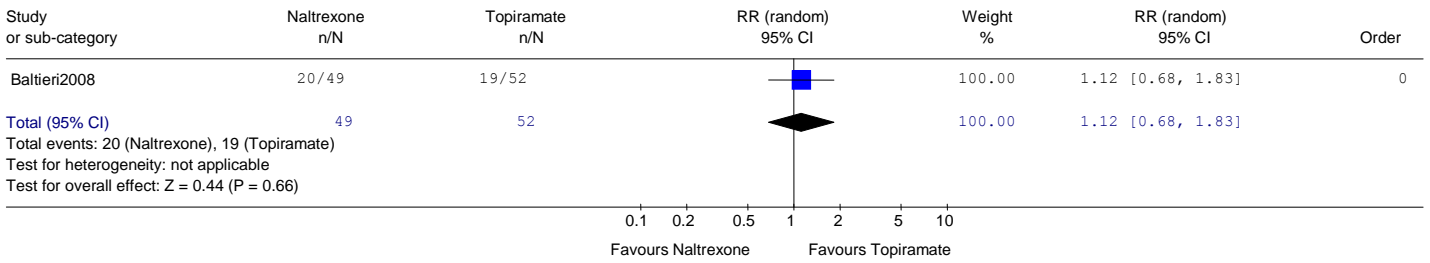


Comparison: 16 Naltrexone + sertraline vs naltrexone  
 Outcome: 06 Relapse to heavy drinking

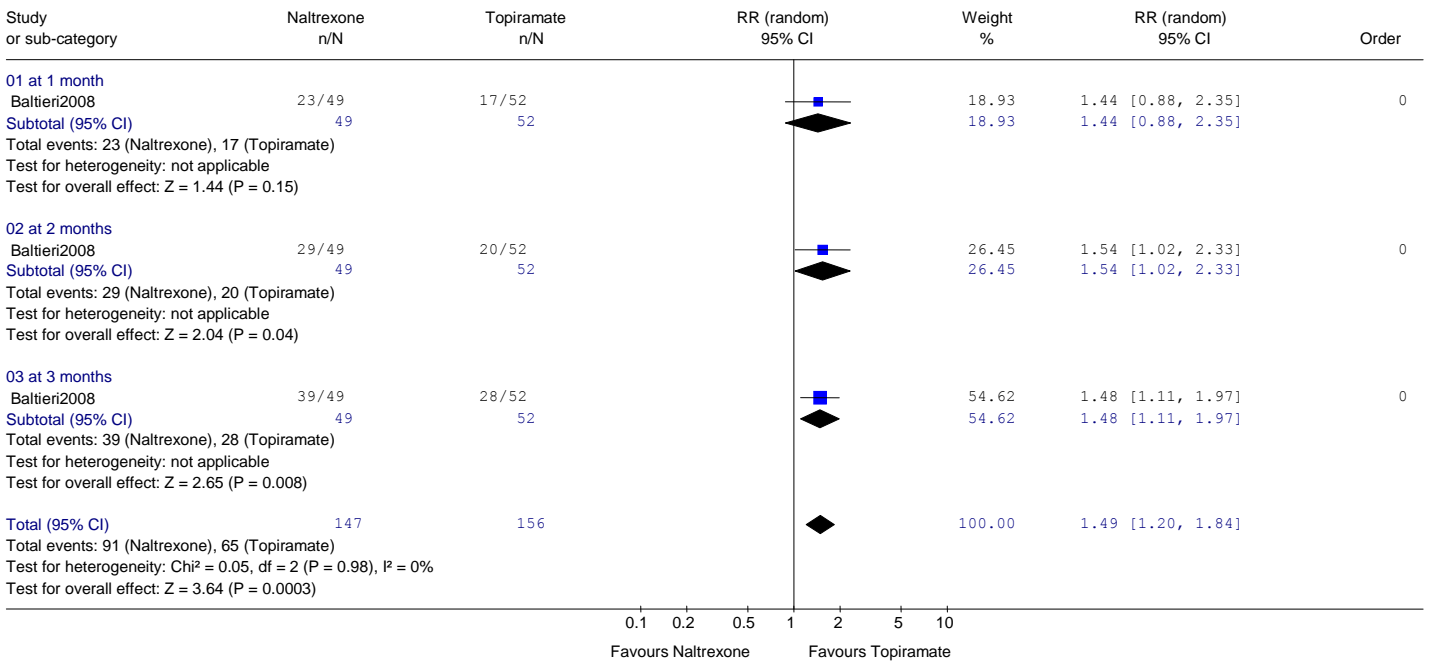


# Naltrexone versus topiramate

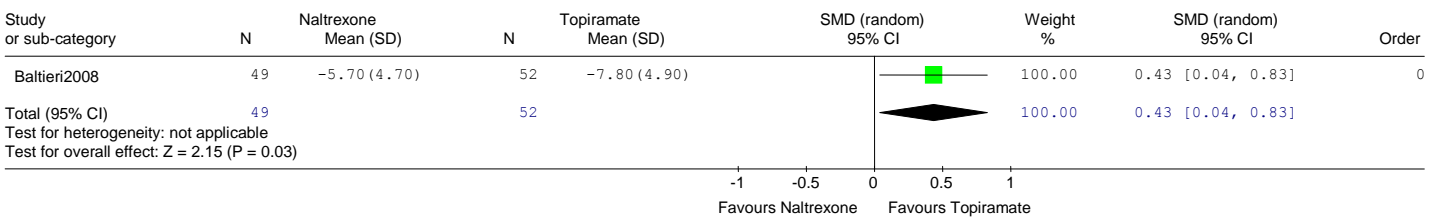
Comparison: 28 naltrexone versus topiramate  
 Outcome: 01 Leaving study early



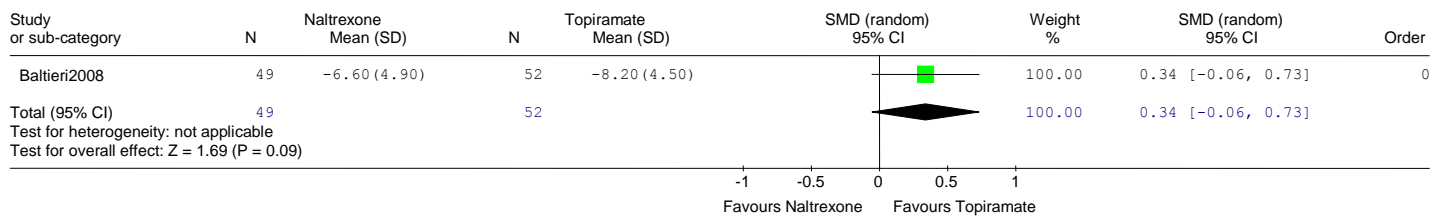
Comparison: 28 Naltrexone vs topiramate  
 Outcome: 02 Lapsed (individuals drinking any alcohol/ not abstinent)



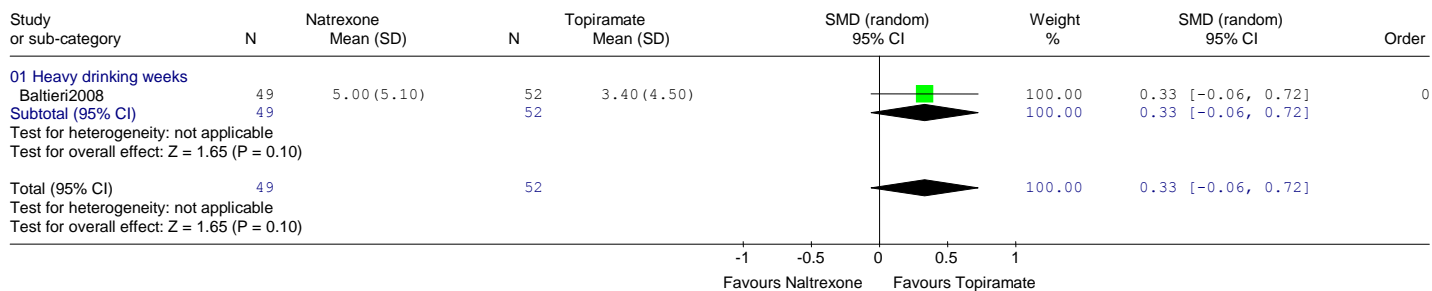
Comparison: 28 Naltrexone vs topiramate  
 Outcome: 03 Time (weeks) to first relapse (>60g alcohol)



Comparison: 28 Naltrexone vs topiramate  
 Outcome: 04 Cumulative abstinence duration (in Weeks)



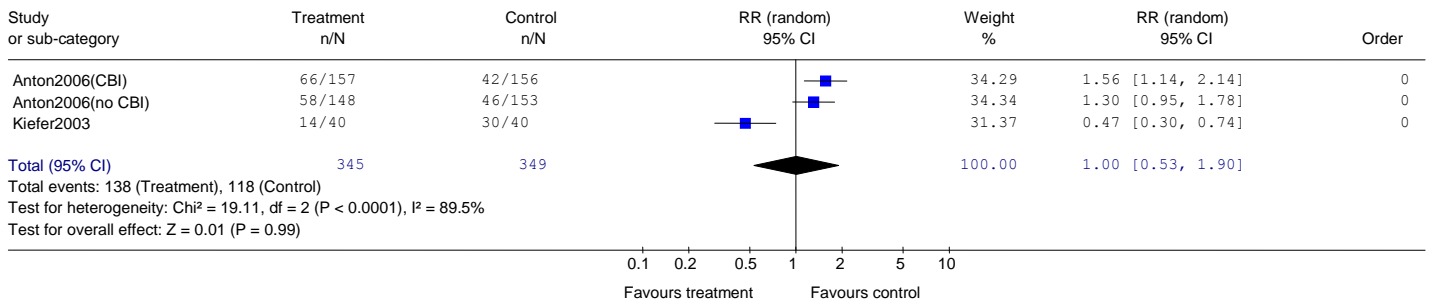
Comparison: 28 Naltrexone vs topiramate  
 Outcome: 05 Drinking severity



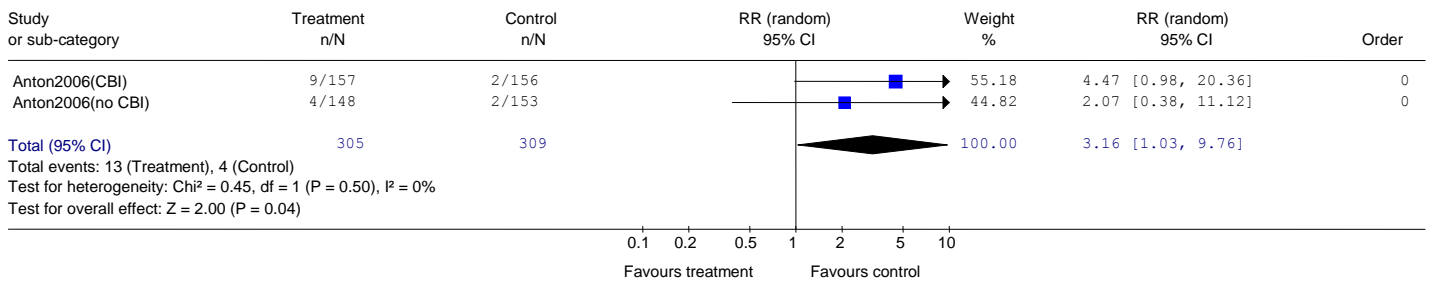
# Naltrexone + acamprosate

## Naltrexone + acamprosate versus placebo

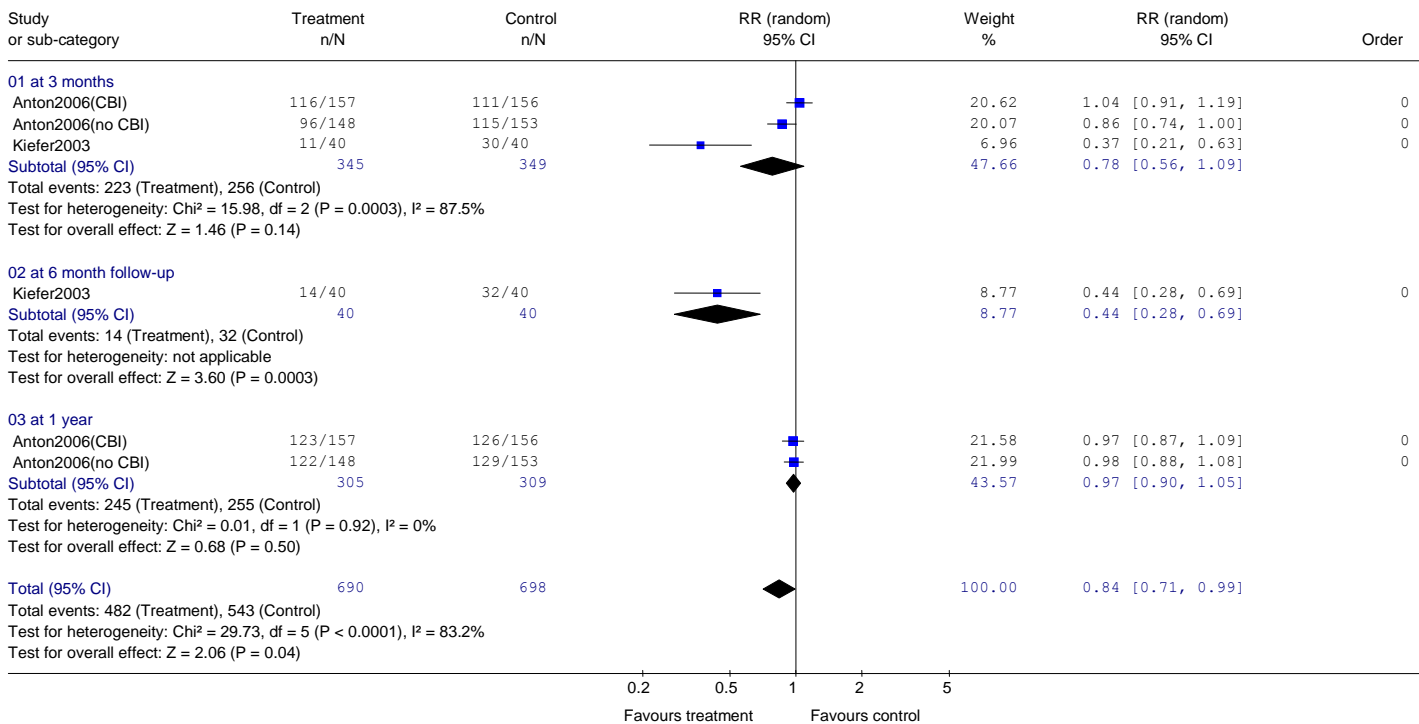
Comparison: 12 Naltrexone + acamprosate versus placebo  
 Outcome: 01 Discontinued treatment (Leaving study early)



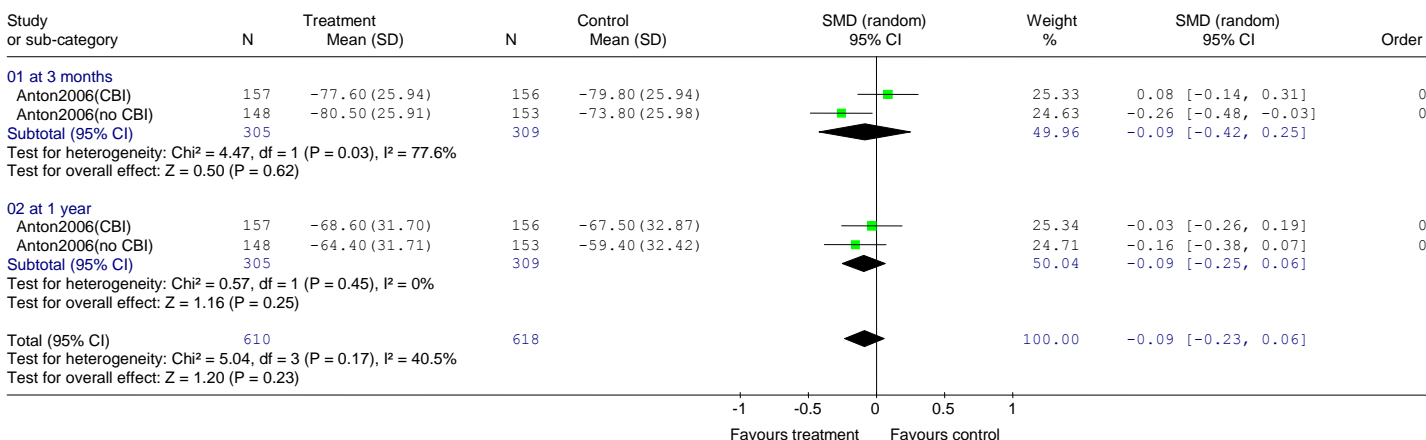
Comparison: 12 Naltrexone + acamprosate versus placebo  
 Outcome: 02 Leaving due to adverse events



Comparison: 12 Naltrexone + acamprostate versus placebo  
 Outcome: 03 Relapsed (heavy drinking)

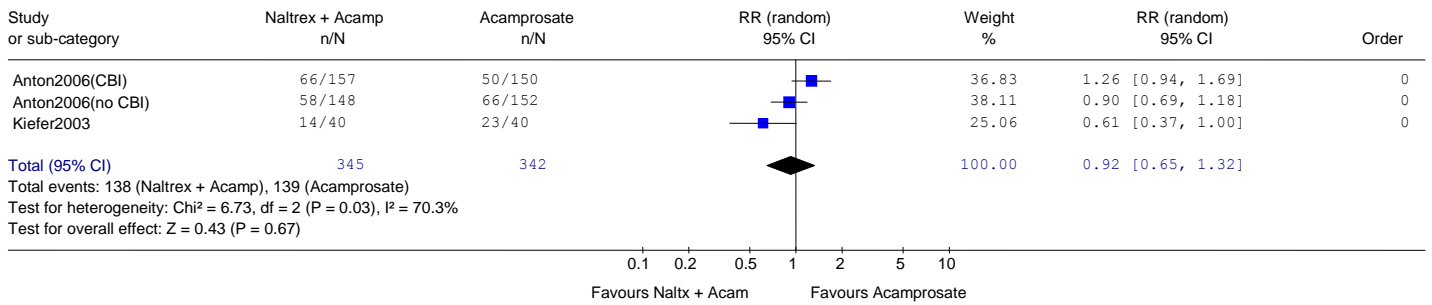


Comparison: 12 Naltrexone + acamprostate versus placebo  
 Outcome: 04 % days abstinent

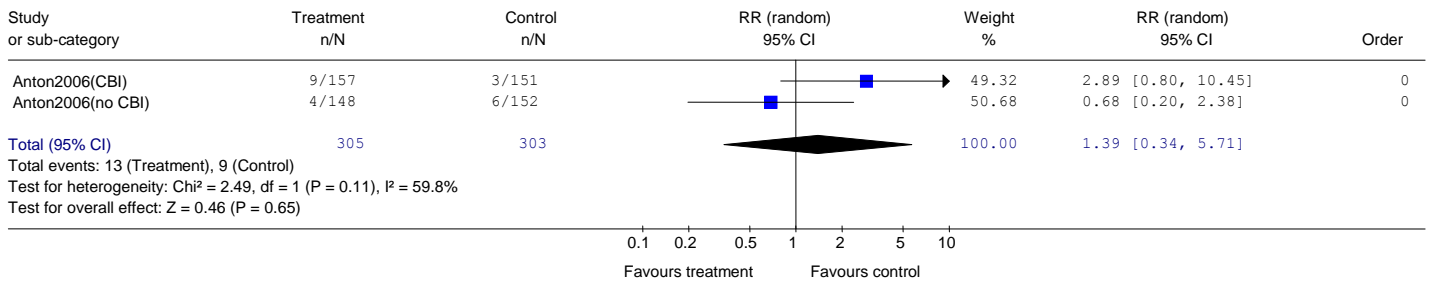


# Naltrexone + acamprosate versus acamprosate

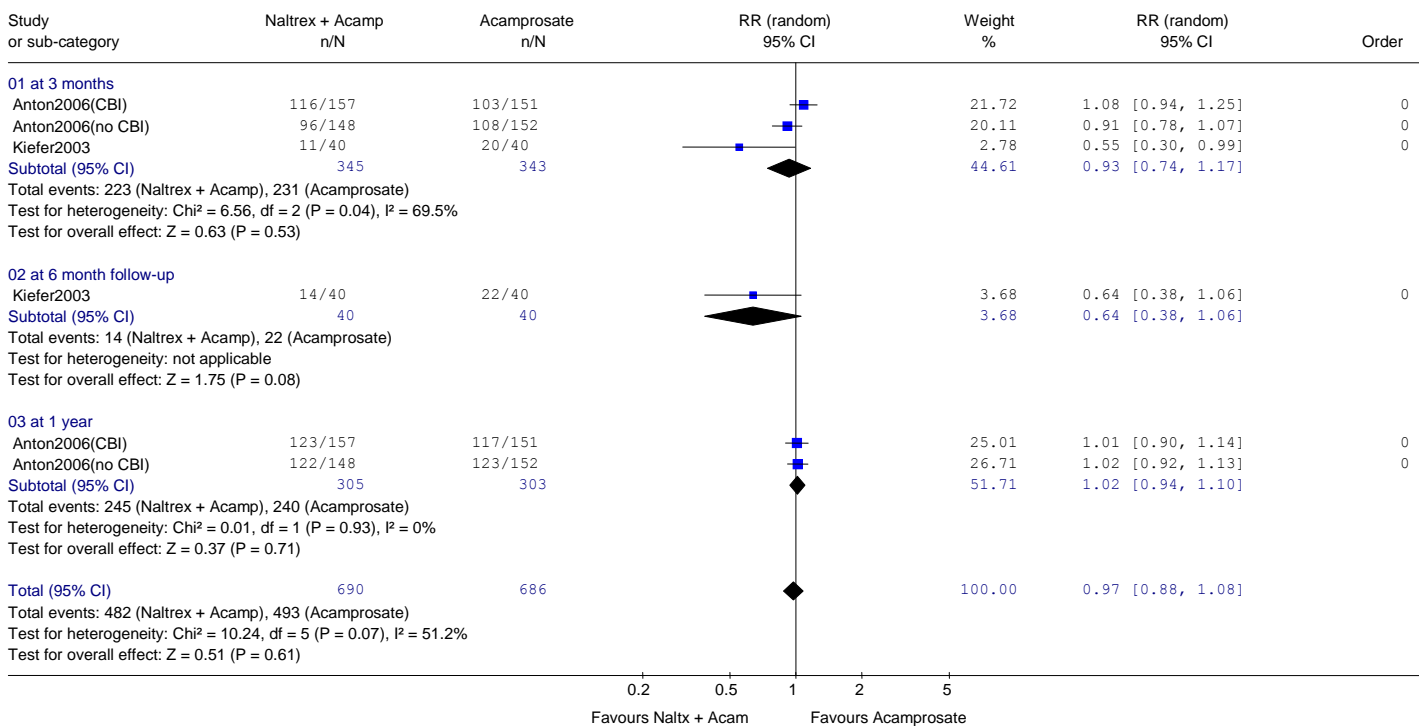
Comparison: 13 Naltrexone + acamprosate versus acamprosate  
 Outcome: 01 Discontinued treatment (Leaving study early)



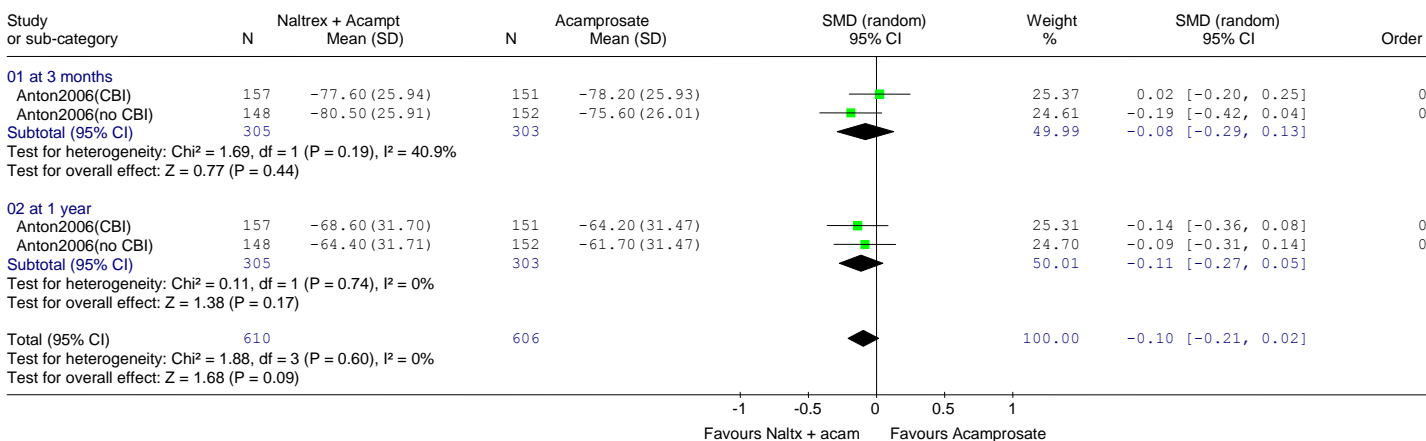
Comparison: 13 Naltrexone + acamprosate versus acamprosate  
 Outcome: 02 Leaving due to adverse events



Comparison: 13 Naltrexone + acamprosate versus acamprosate  
 Outcome: 03 Relapsed (heavy drinking)

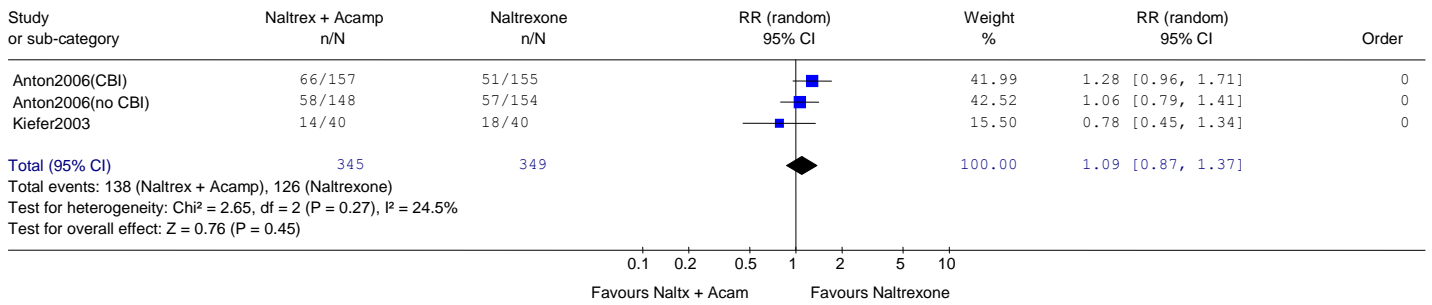


Comparison: 13 Naltrexone + acamprosate versus acamprosate  
 Outcome: 04 % days abstinent

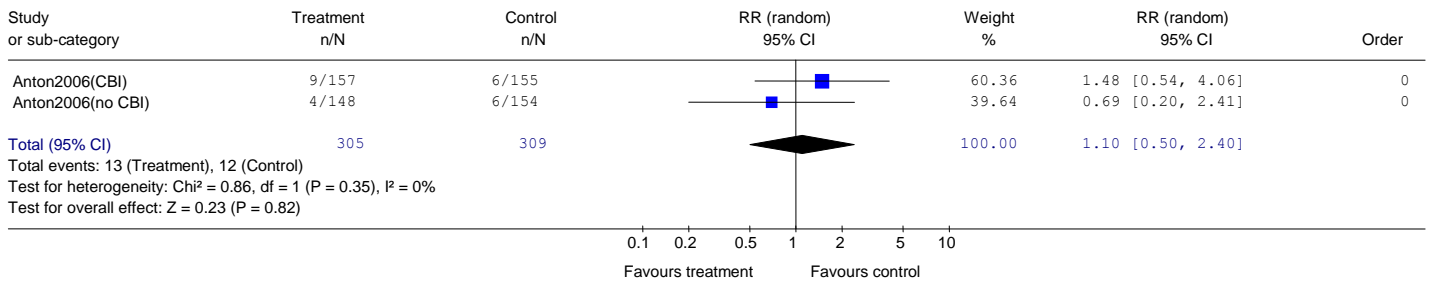


# Naltrexone + acamprosate versus naltrexone

Comparison: 14 Naltrexone + acamprosate versus naltrexone  
 Outcome: 01 Discontinued treatment (Leaving study early)

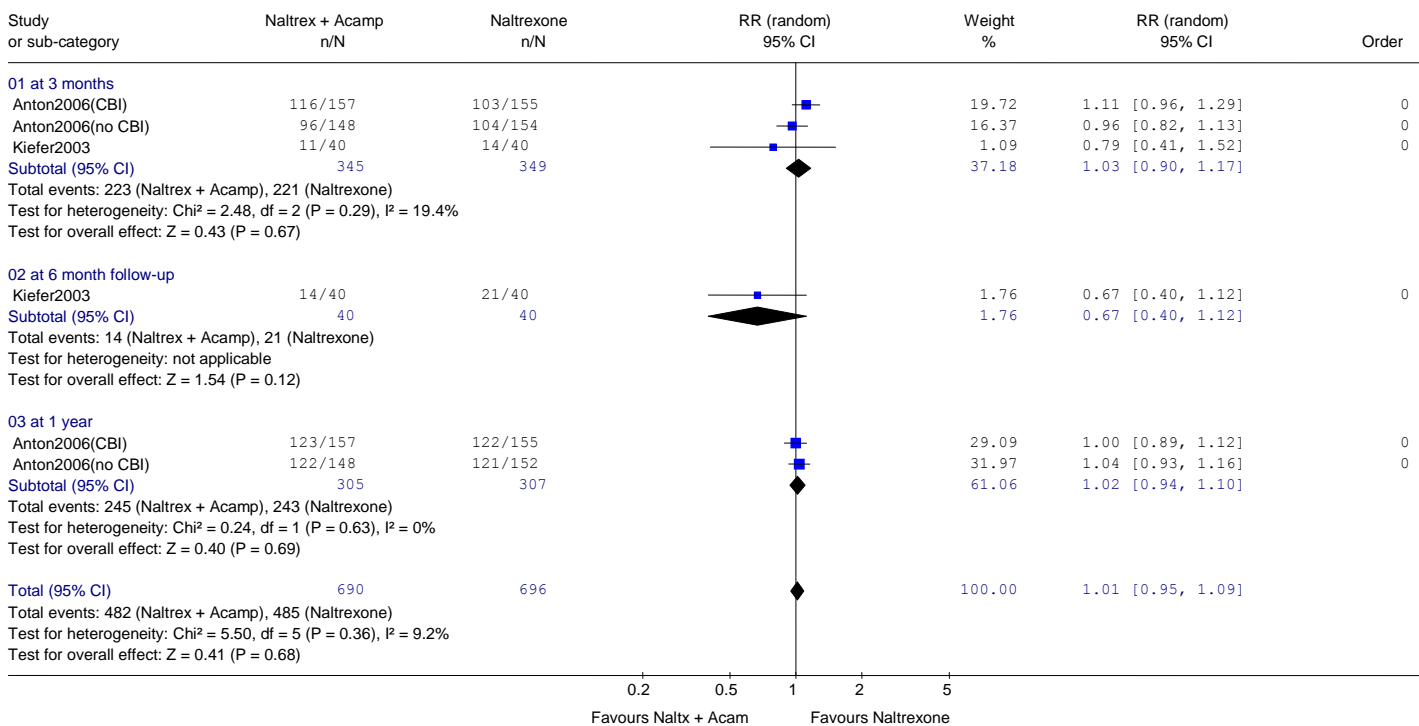


Comparison: 14 Naltrexone + acamprosate versus naltrexone  
 Outcome: 02 Leaving due to adverse events

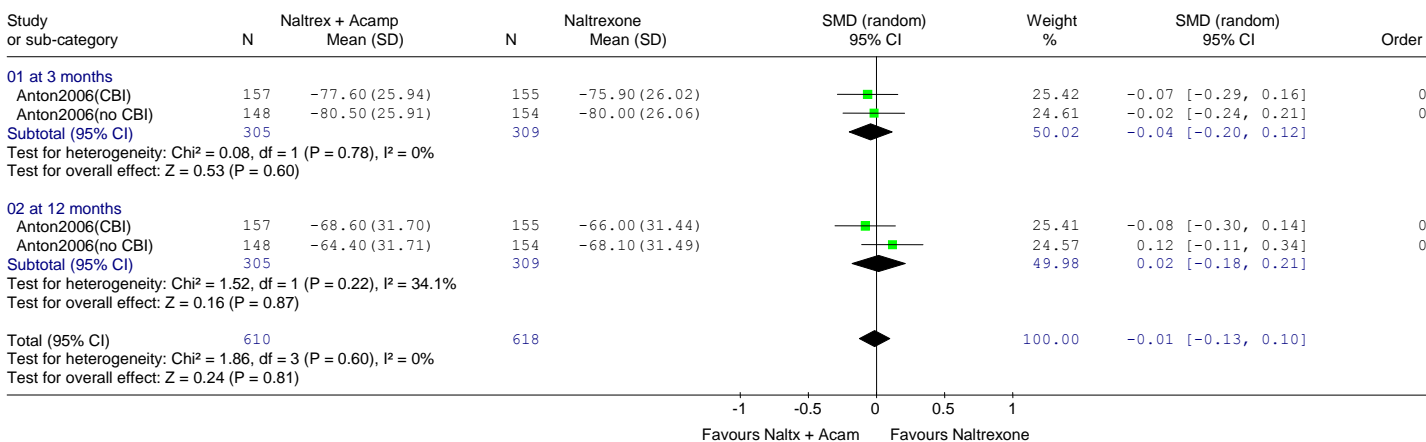




Comparison: 14 Naltrexone + acamprostate versus naltrexone  
 Outcome: 03 Relapsed (heavy drinking)



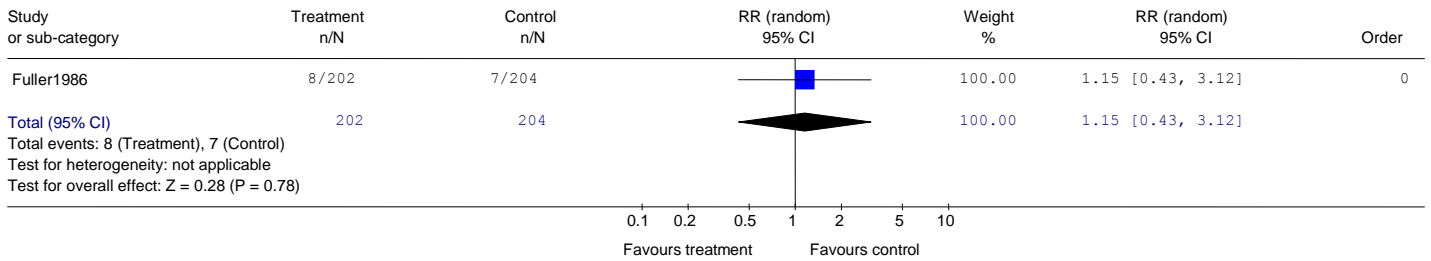
Comparison: 14 Naltrexone + acamprostate versus naltrexone  
 Outcome: 04 % days abstinent



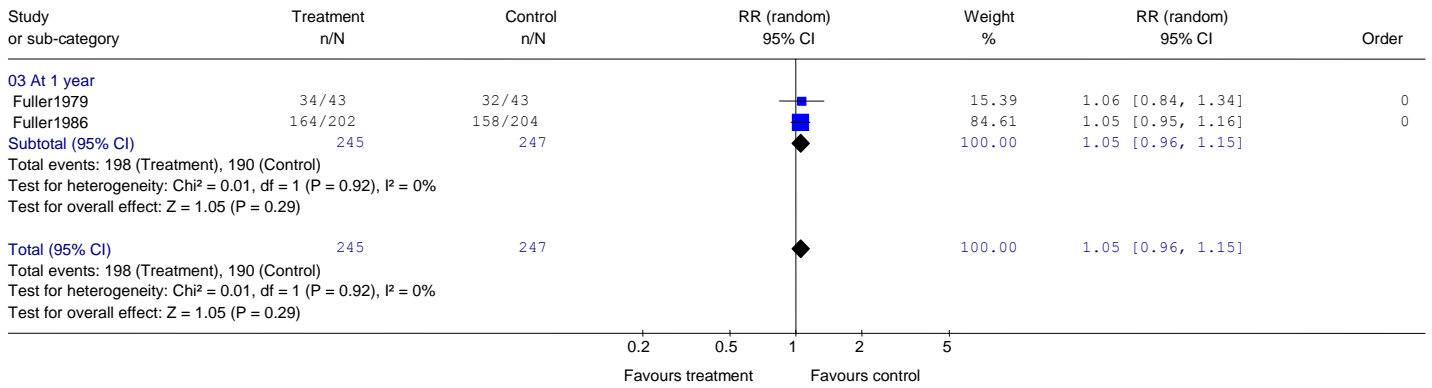
# Disulfiram

## Disulfiram versus placebo

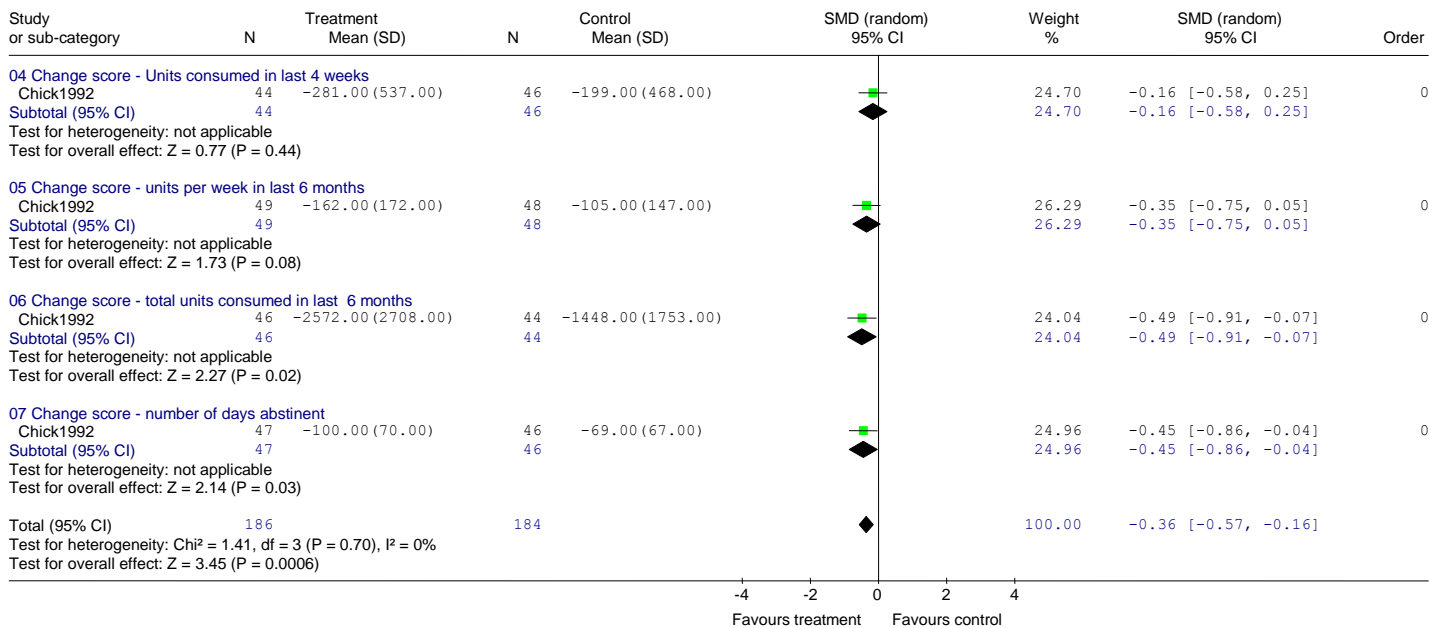
Comparison: 01 Disulfiram (Oral) versus Placebo (or 1g Disulfiram)  
 Outcome: 01 Discontinued study - Leaving study for any reason



Comparison: 01 Disulfiram (Oral) versus Placebo (or 1g Disulfiram)  
 Outcome: 02 Lapsed (Individuals drinking any alcohol/ not abstinent)

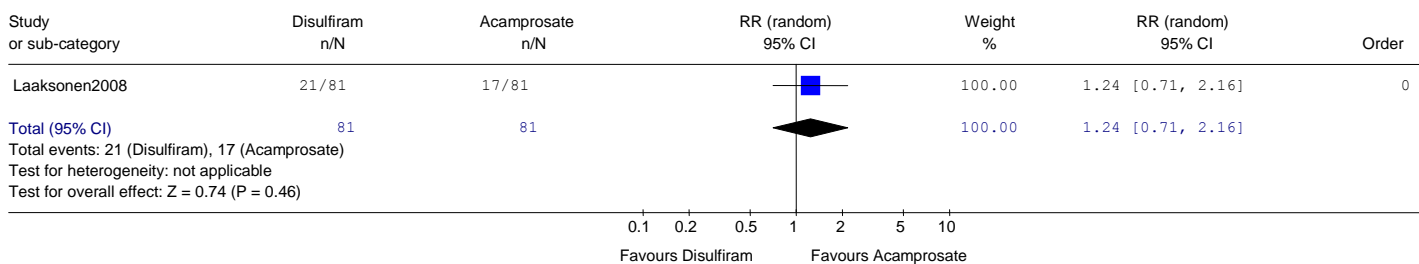


Comparison: 01 Disulfiram (Oral) versus Placebo (or 1g Disulfiram)  
 Outcome: 05 Drinking measures

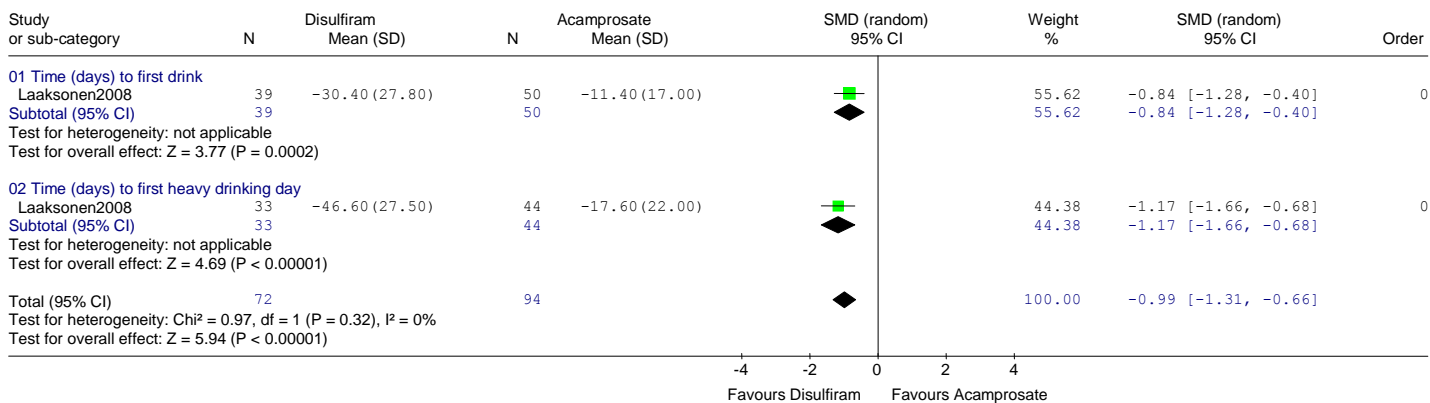


## Disulfiram versus acamprosate

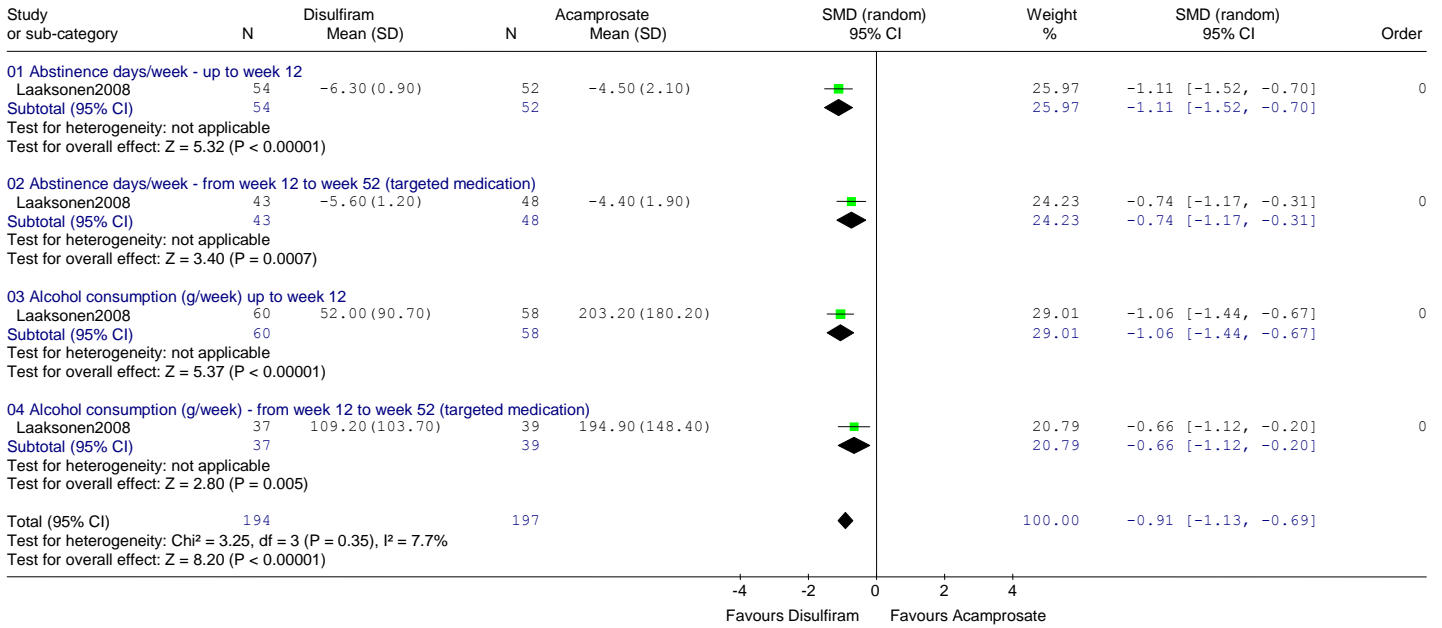
Comparison: 02 Disulfiram versus acamprosate  
 Outcome: 01 Discontinued study - Leaving study for any reason



Comparison: 02 Disulfiram versus acamprosate  
 Outcome: 02 Time (days) to first drink / heavy drinking day

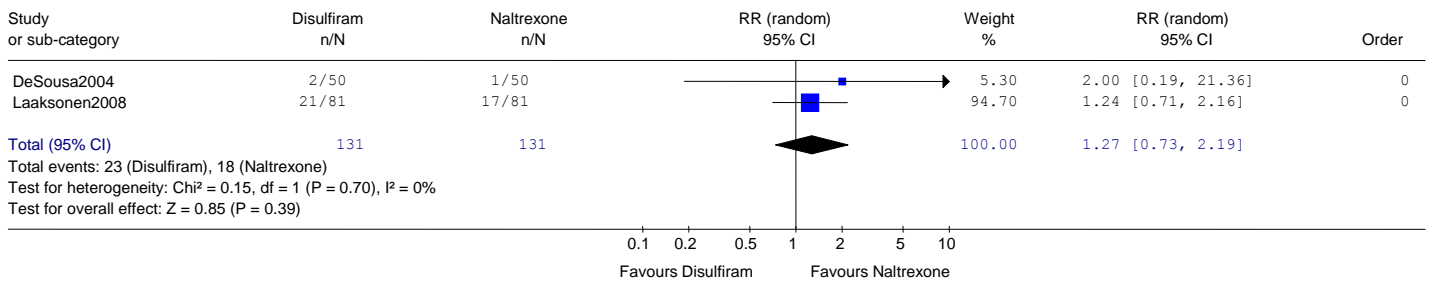


Comparison: 02 Disulfiram versus acamprosate  
 Outcome: 03 Drinking measures

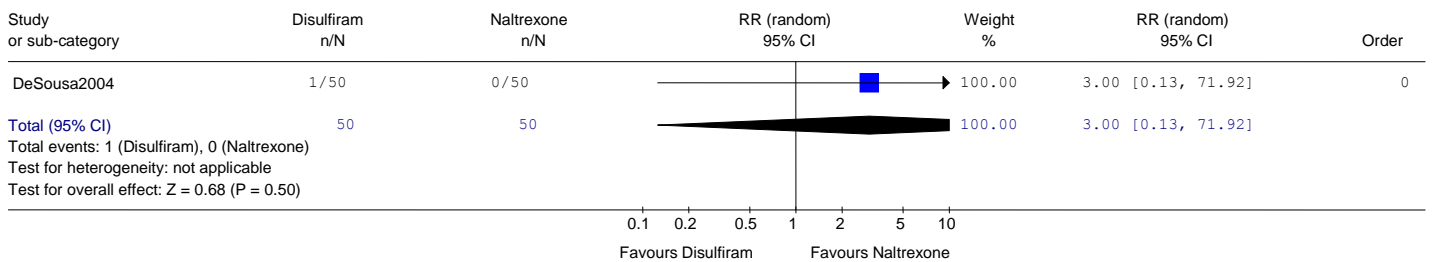


## Disulfiram versus naltrexone

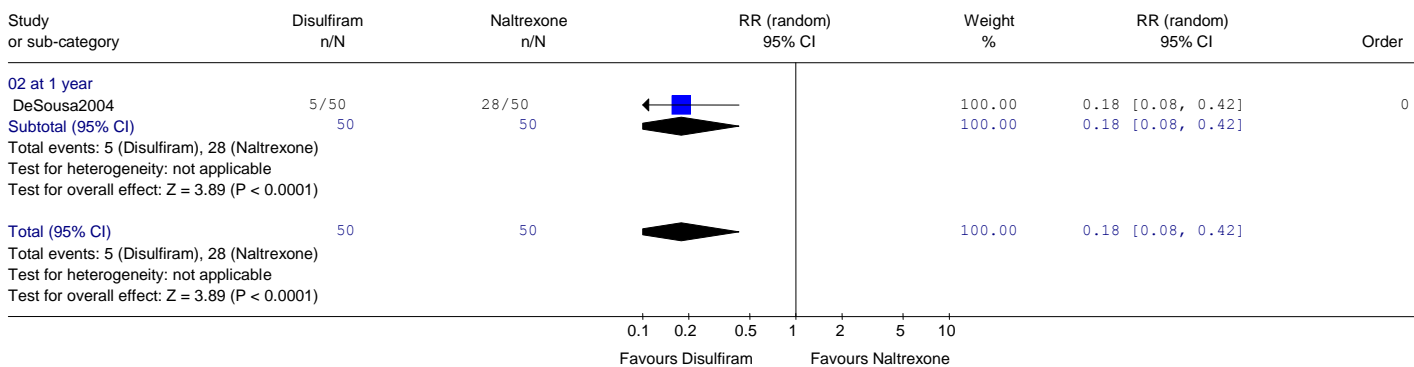
Comparison: 03 Disulfiram versus naltrexone  
 Outcome: 01 Discontinued study - Leaving study for any reason



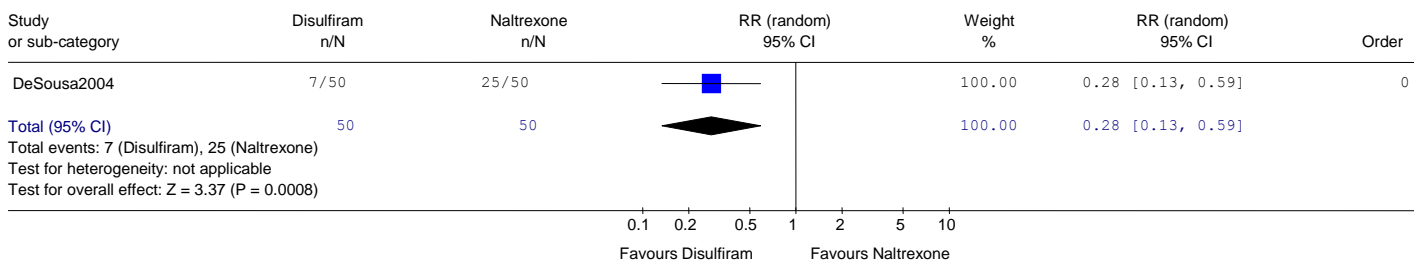
Comparison: 03 Disulfiram versus naltrexone  
 Outcome: 02 Leaving due to adverse events



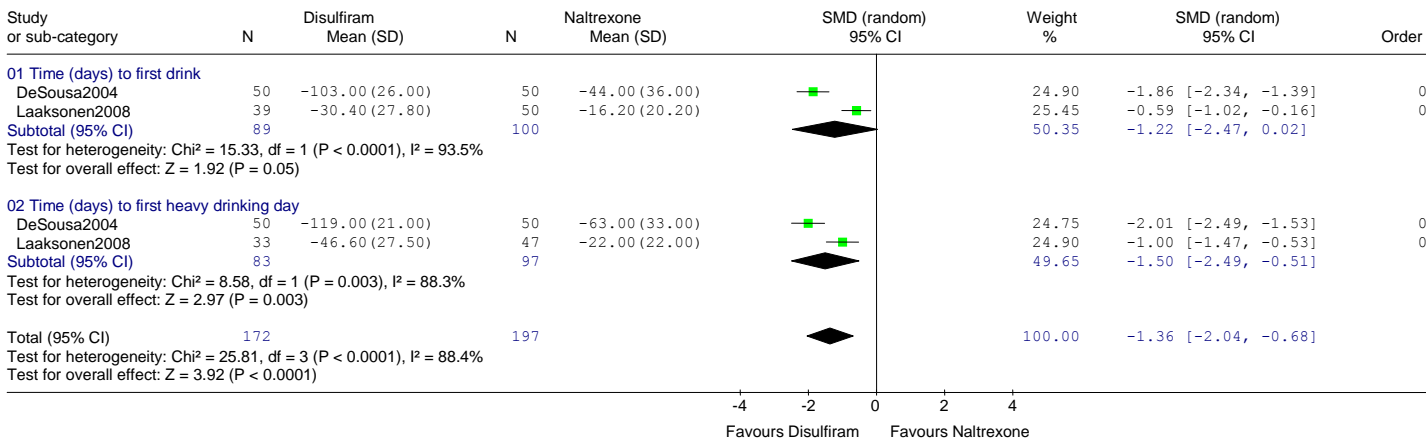
Comparison: 03 Disulfiram versus naltrexone  
 Outcome: 03 Lapsed (Individuals drinking any alcohol/ not abstinent)



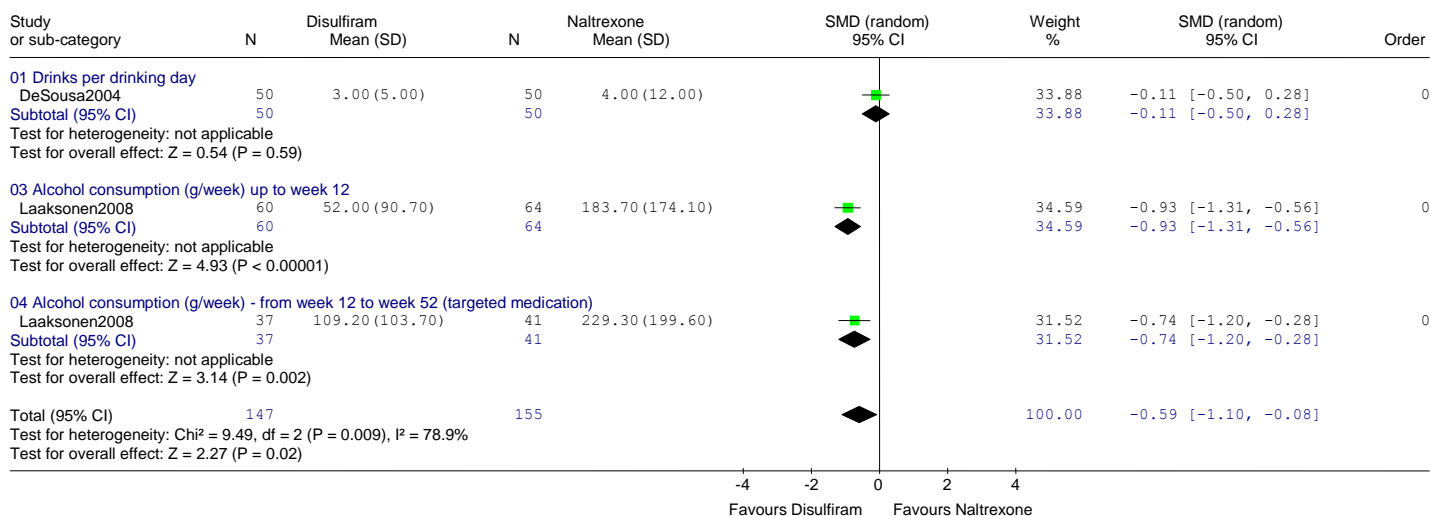
Comparison: 03 Disulfiram versus naltrexone  
 Outcome: 04 Relapsed to heavy drinking



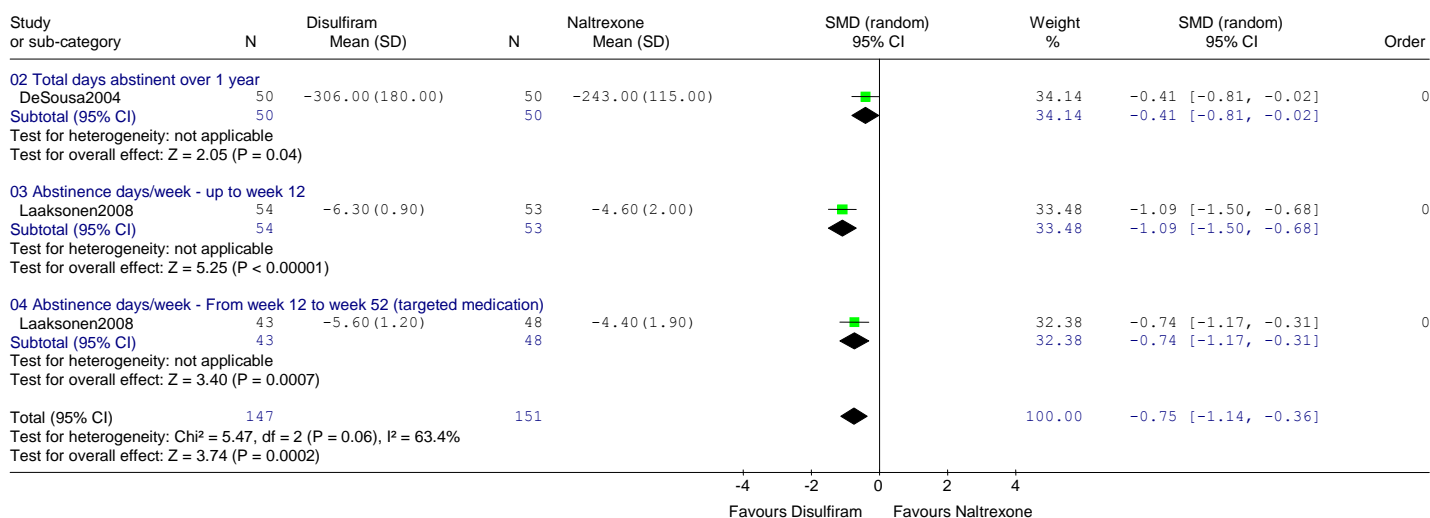
Comparison: 03 Disulfiram versus naltrexone  
 Outcome: 05 Time (days) to first drink / heavy drinking day



Comparison: 03 Disulfiram versus naltrexone  
 Outcome: 06 Drinking measures

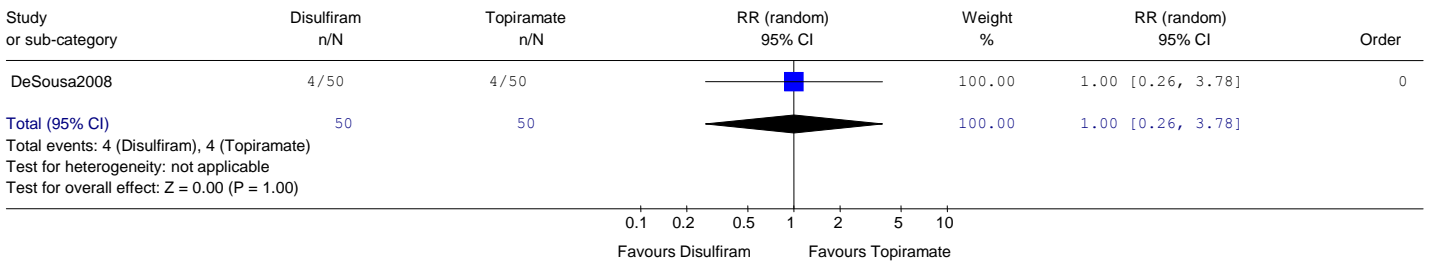


Comparison: 03 Disulfiram versus naltrexone  
 Outcome: 07 Abstinence measures

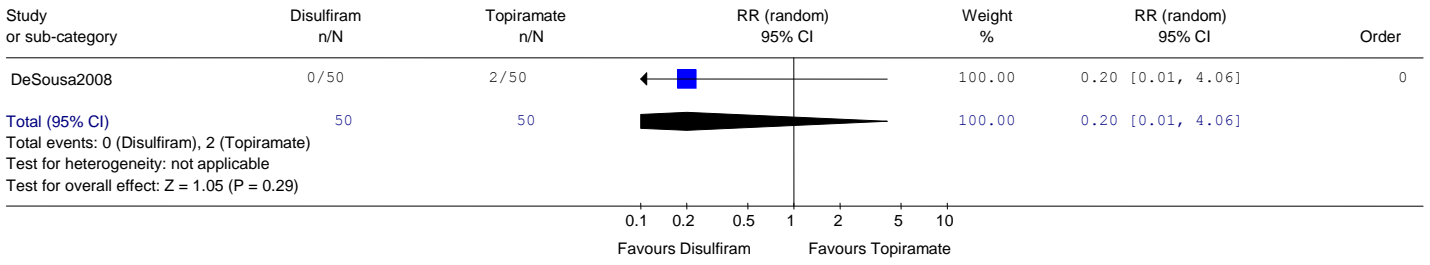


# Disulfiram versus topiramate

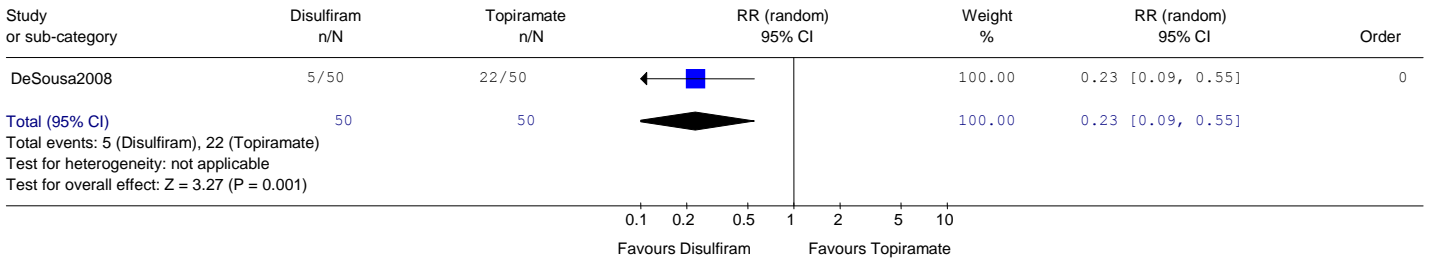
Comparison: 07 Disulfiram versus topiramate  
 Outcome: 01 Leaving study early



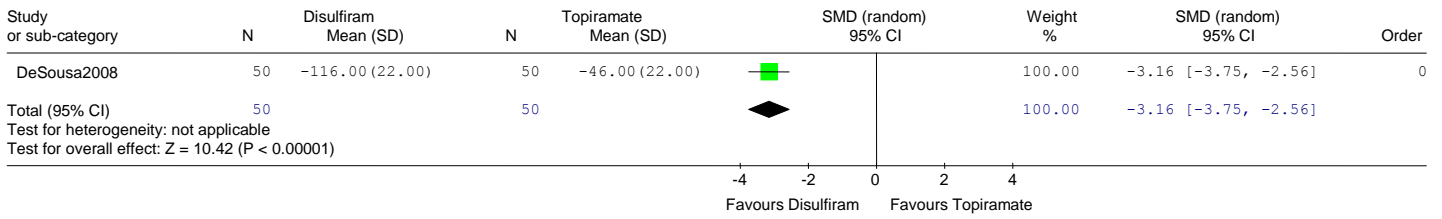
Comparison: 07 Disulfiram versus topiramate  
 Outcome: 02 Leaving study due to adverse events



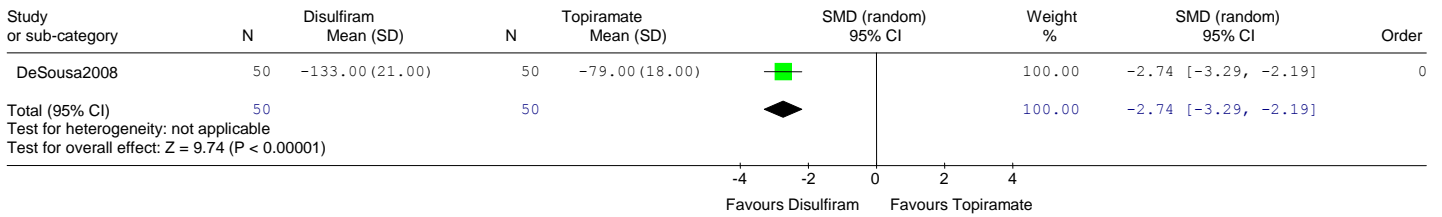
Comparison: 07 Disulfiram versus topiramate  
 Outcome: 04 Relapsed to heavy drinking



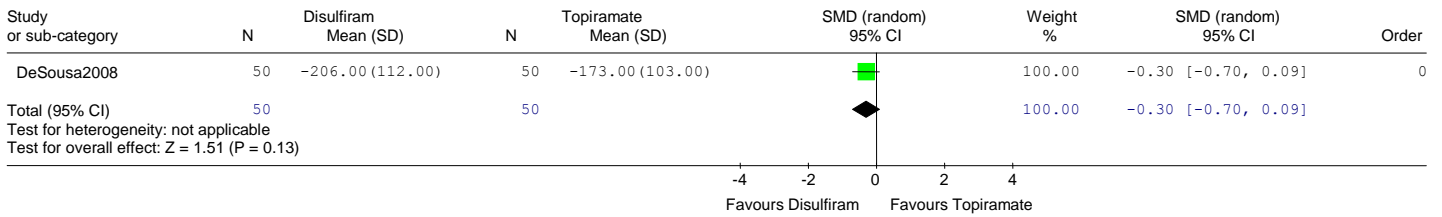
Comparison: 07 Disulfiram versus topiramate  
 Outcome: 05 Days to first drink



Comparison: 07 Disulfiram versus topiramate  
 Outcome: 06 Days to first relapse



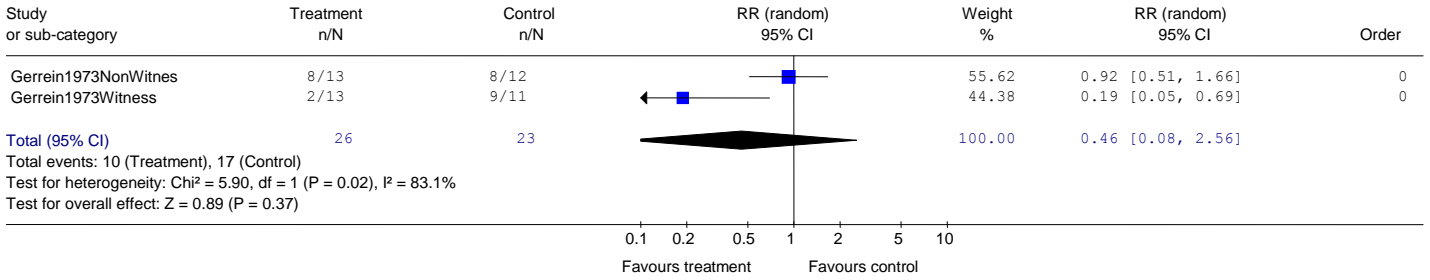
Comparison: 07 Disulfiram versus topiramate  
 Outcome: 07 Total days of abstinence





## Disulfiram + counselling versus counselling

Comparison: 08 Disulfiram + counselling versus counselling  
 Outcome: 01 Discontinued study - Leaving study for any reason



Comparison: 08 Disulfiram + counselling versus counselling  
 Outcome: 02 Lapsed (Individuals drinking any alcohol/ not abstinent)

