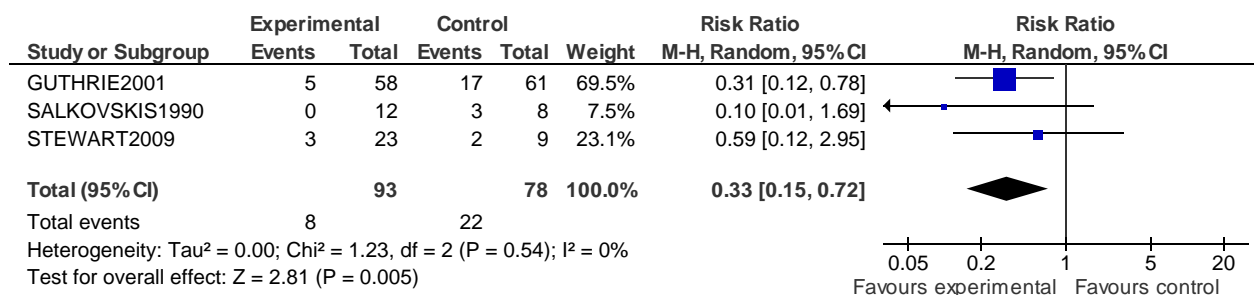
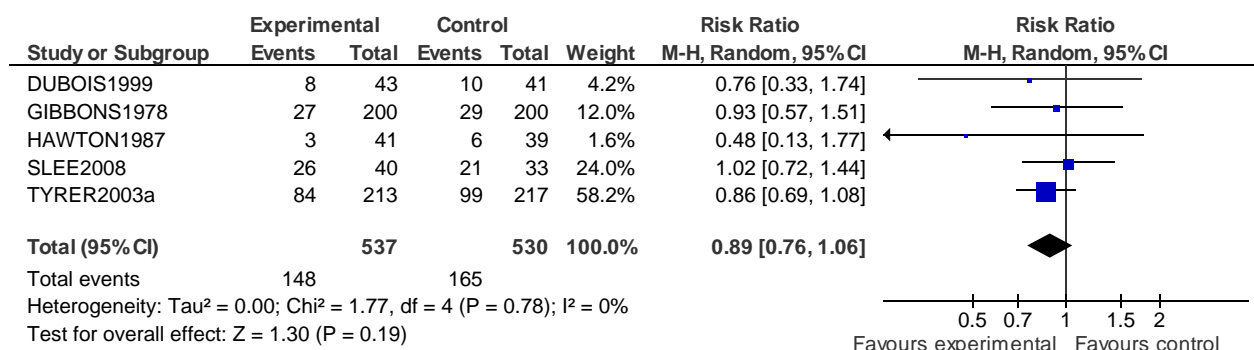


1 Psychological therapy versus TAU

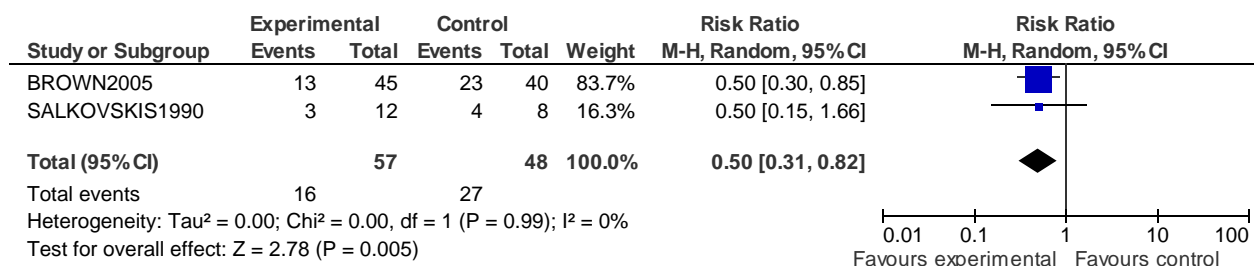
1.1 Per protocol repetition 0-6 months



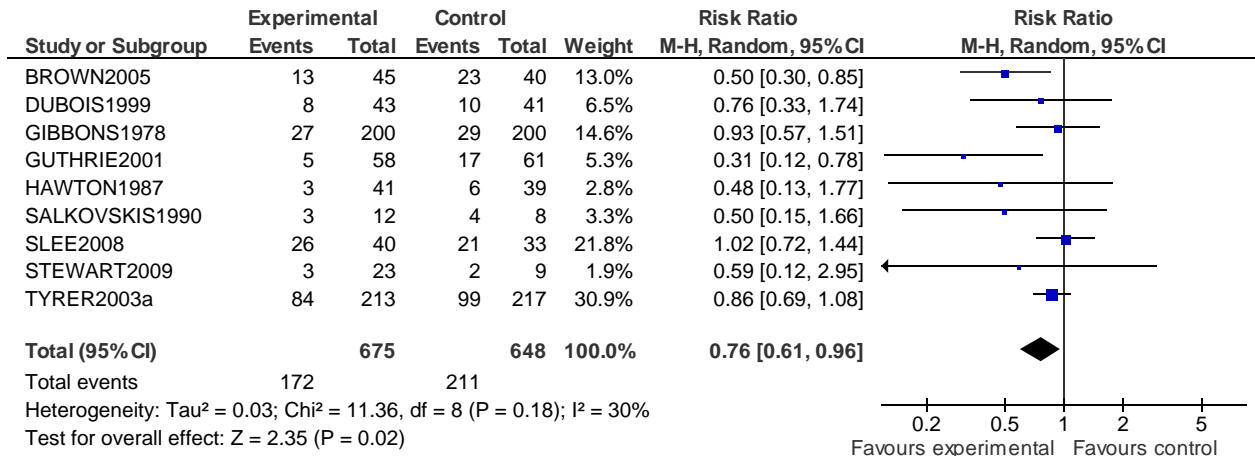
1.2 Per protocol repetition 6-12 months



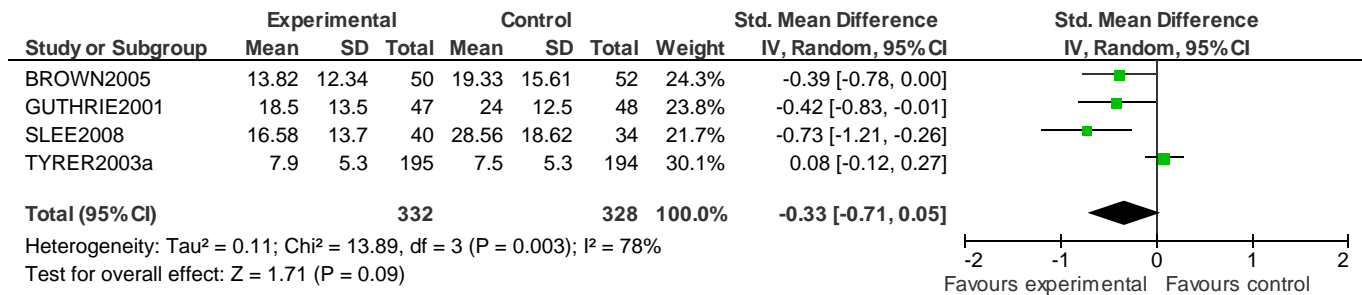
1.3 Per protocol repetition over 12 months



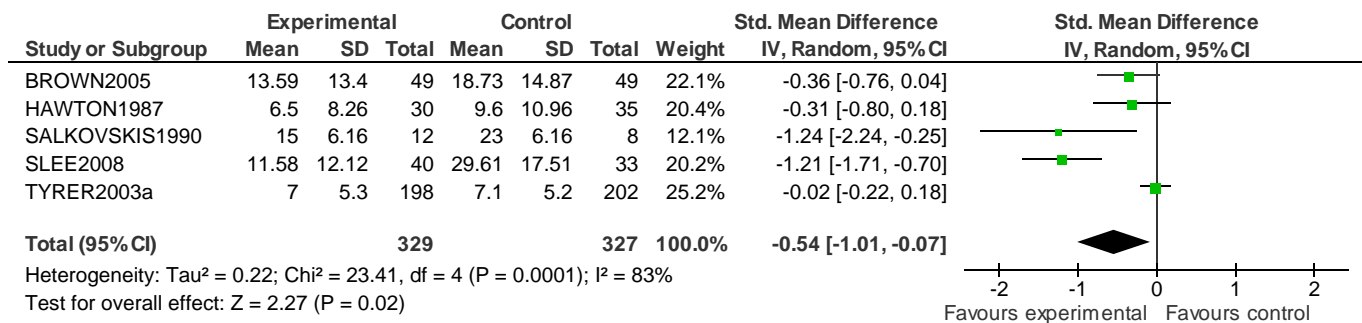
1.4 Per protocol repetition (last follow up)



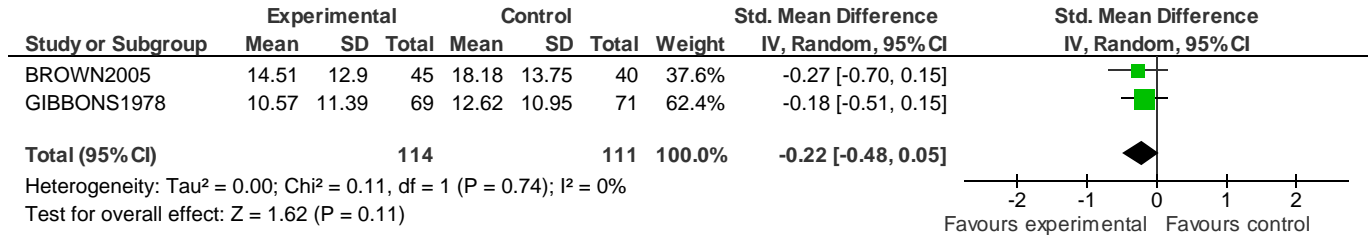
1.5 Depression scores at 6 months



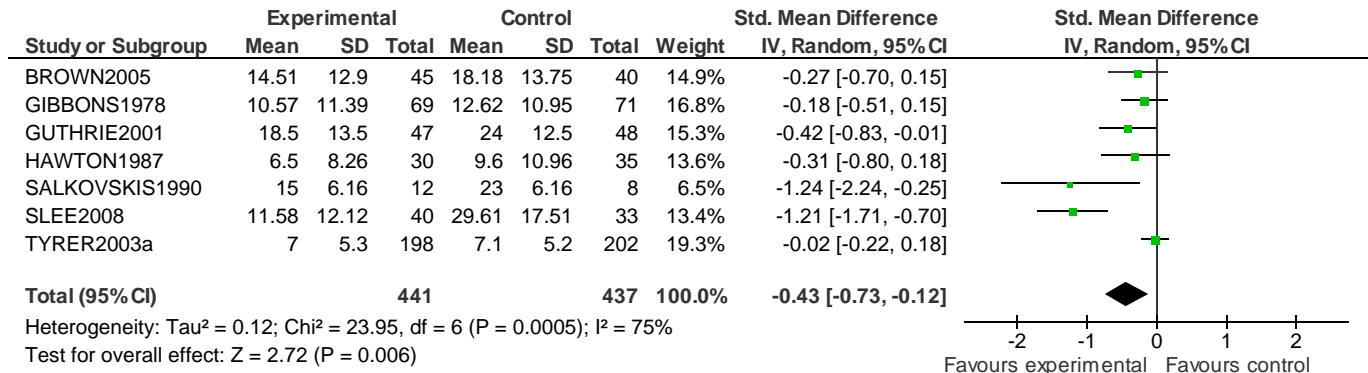
1.6 Depression scores at 12 months



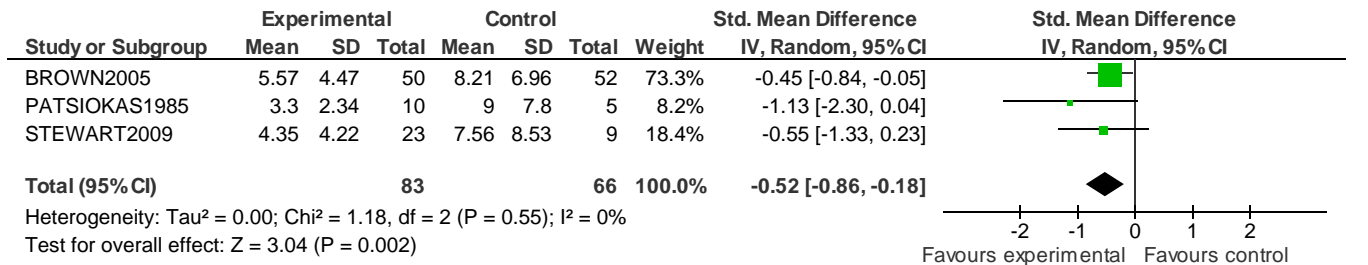
1.7 Depression scores over 12 months



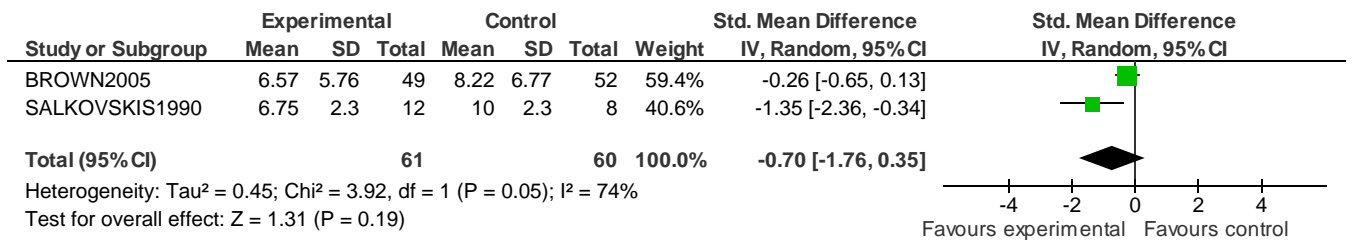
1.8 Depression scores at last follow up



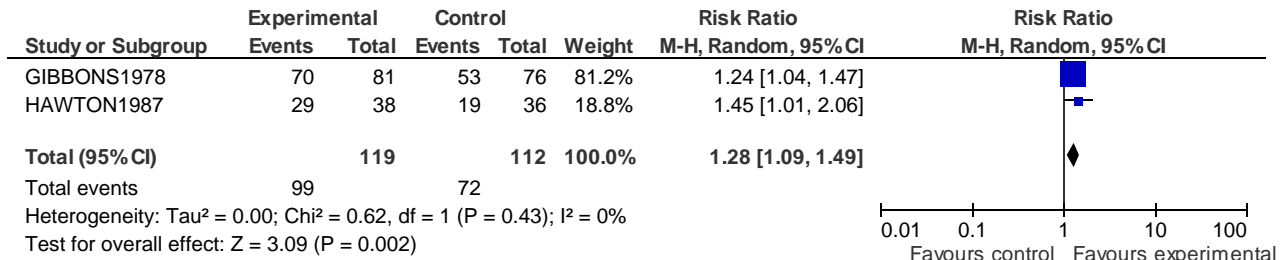
1.9 Hopelessness scores during 0-6 months



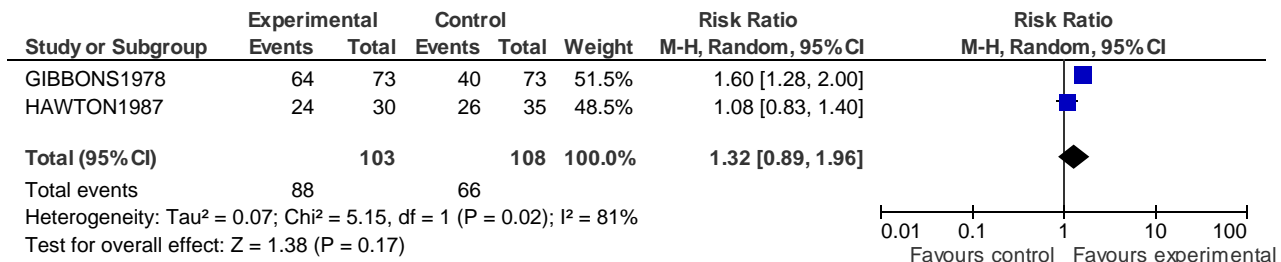
1.10 Hopelessness scores at 12 months



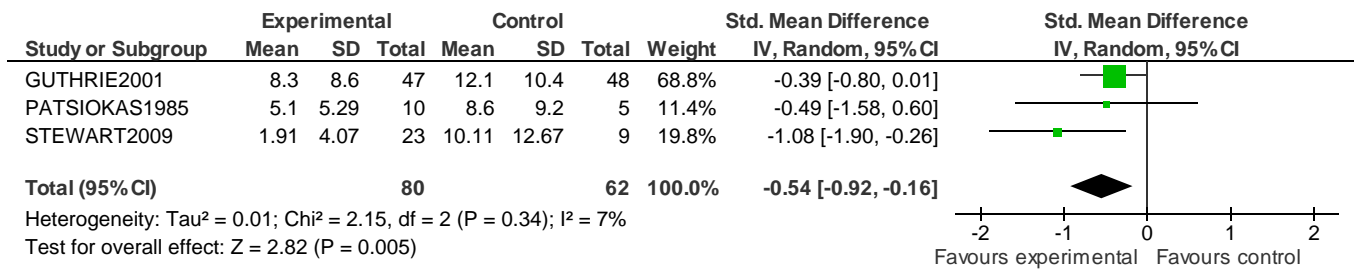
1.11 Number of participants with improved problems at 4 months



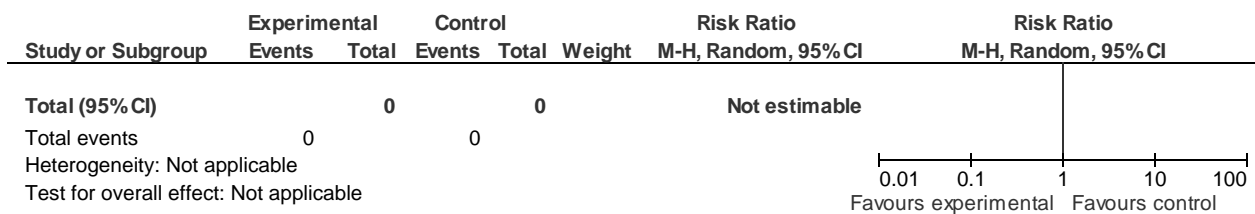
1.14 Number of participants with improved problems at last follow up



1.15 Suicide ideation scores during 0-6 months

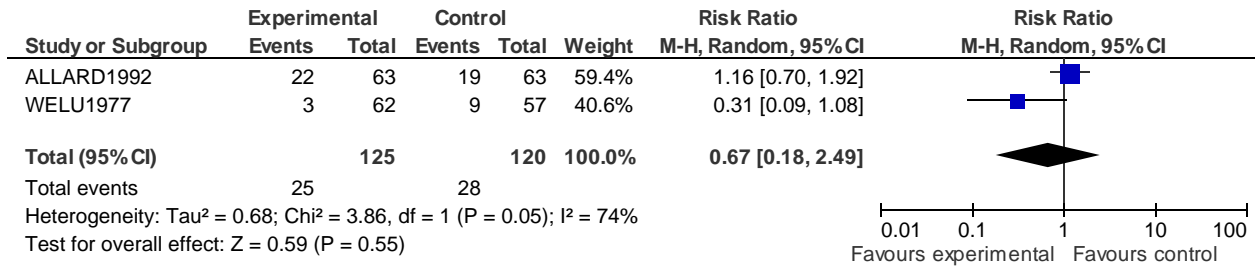


1.16 Suicides at last follow up

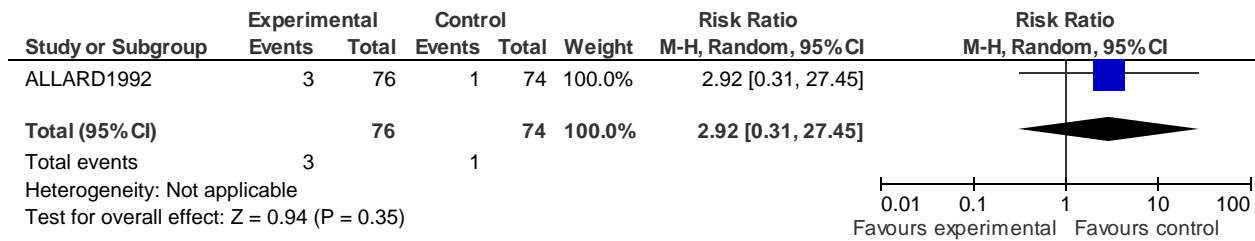


2 Intensive intervention versus TAU

2.1 Per protocol repetition at last follow up

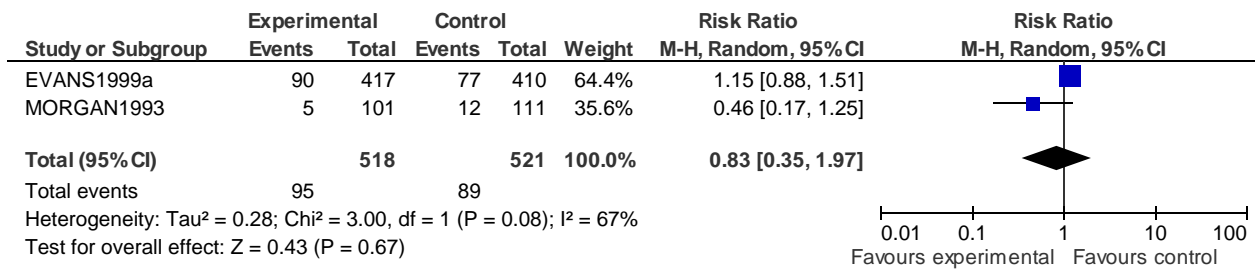


2.2 Suicides during F/U

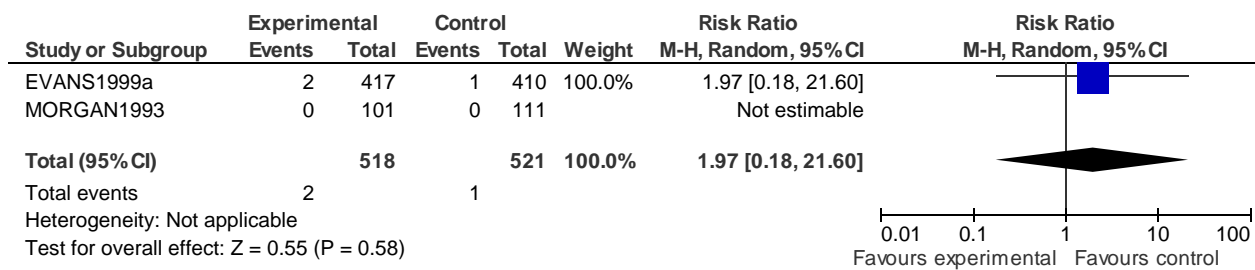


3 Emergency card versus TAU

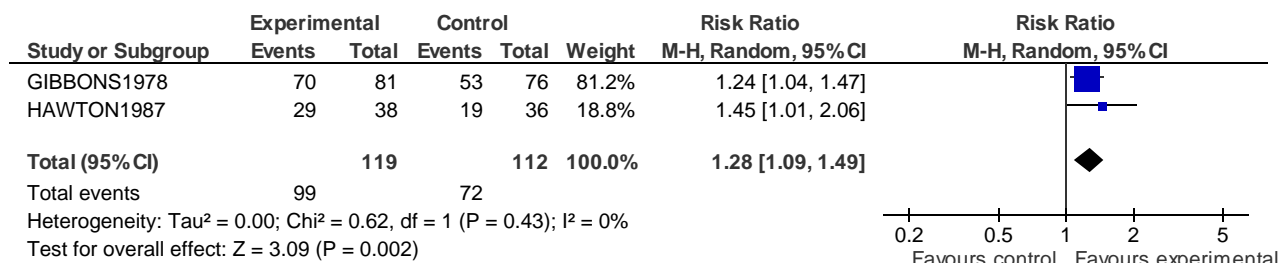
3.1 Repetition at 12 months



3.2 Suicides

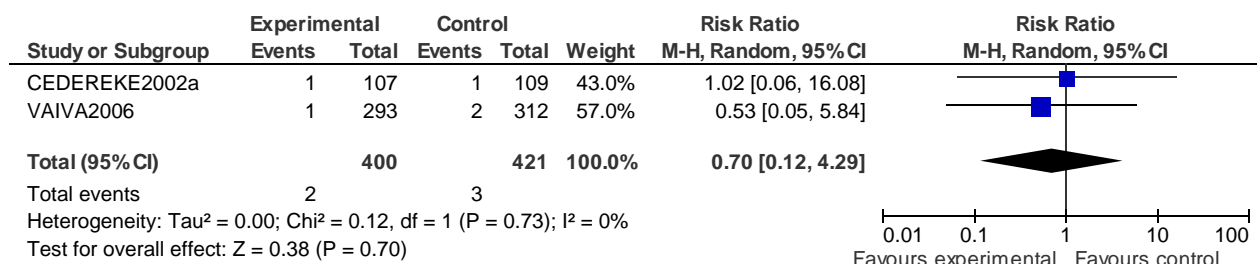


3.13 No. of participants with improved problems at 4 months

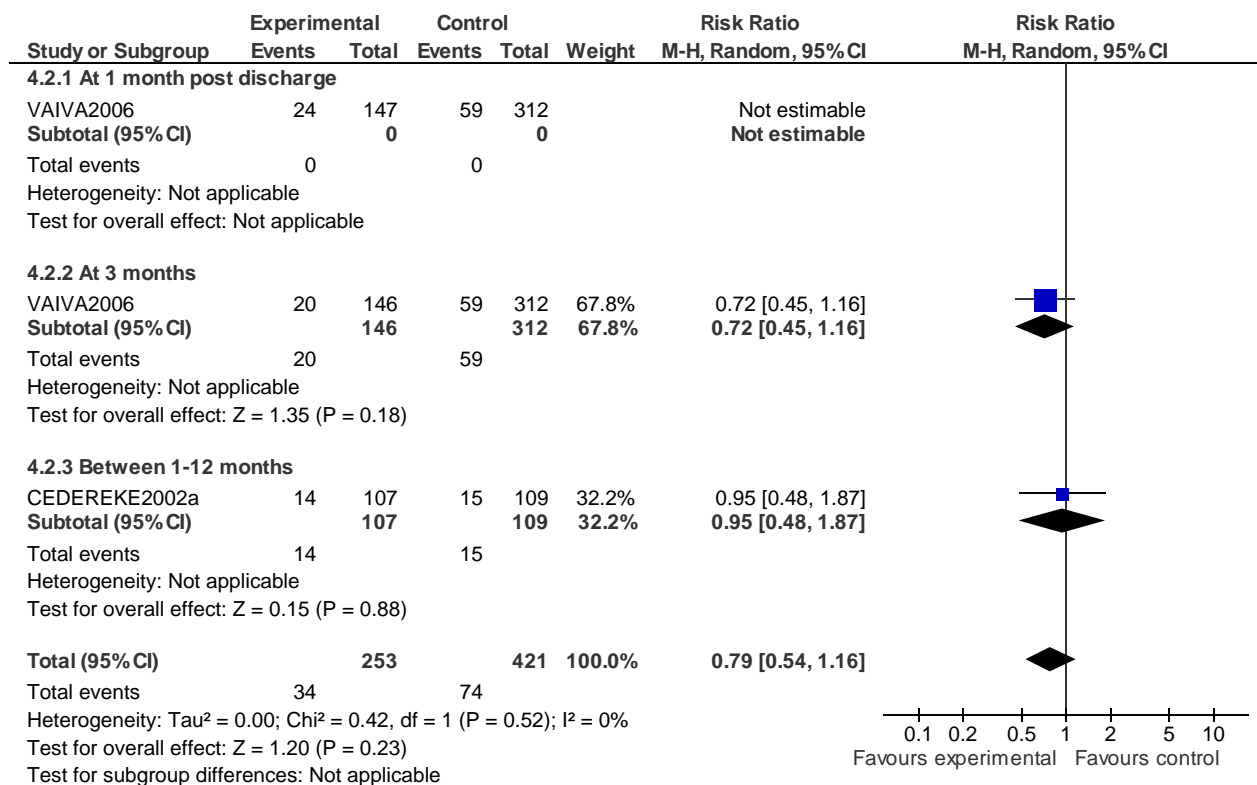


4 Telephone contact versus TAU

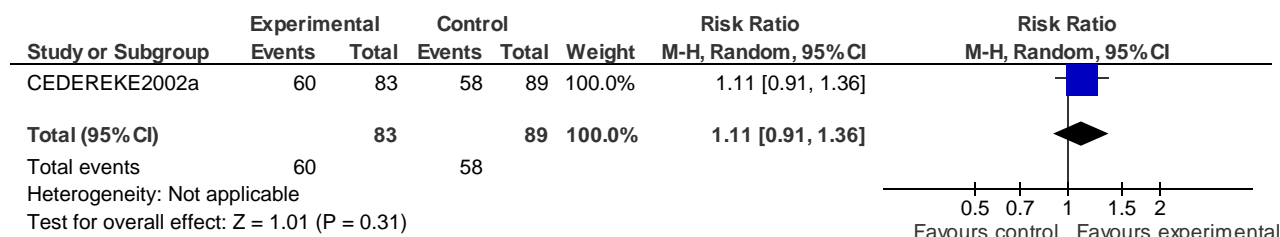
4.1 Suicide at last follow up



4.2 Repetition

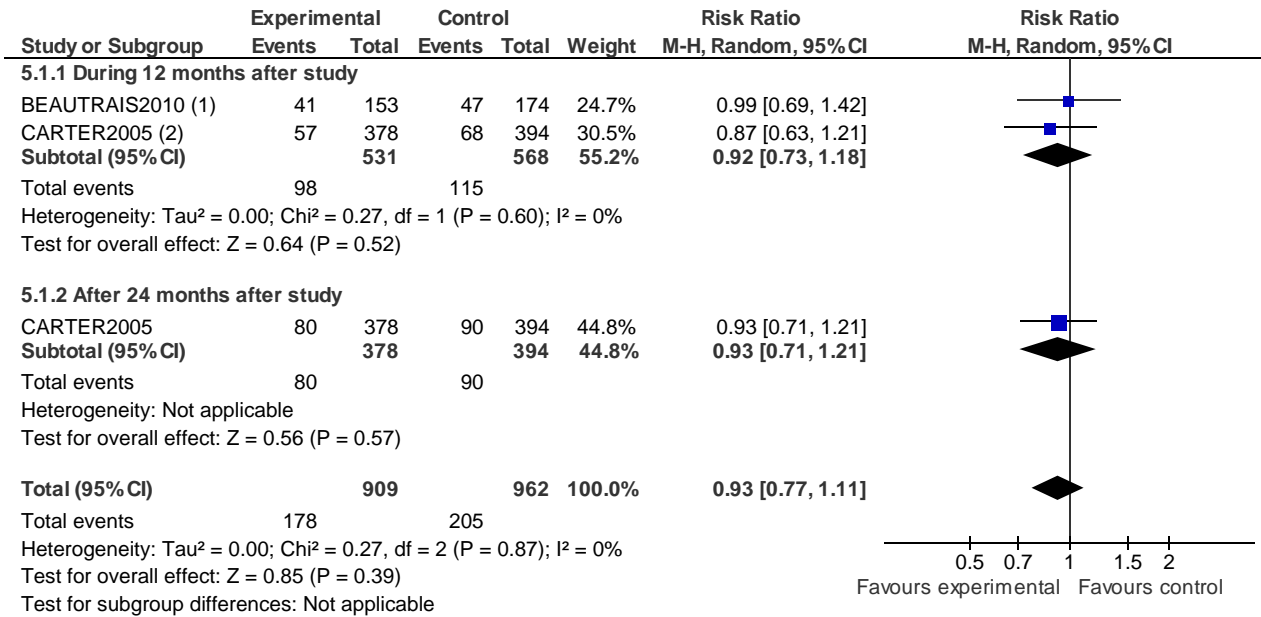


4.3 Attendance (at least once during 12 months follow up)



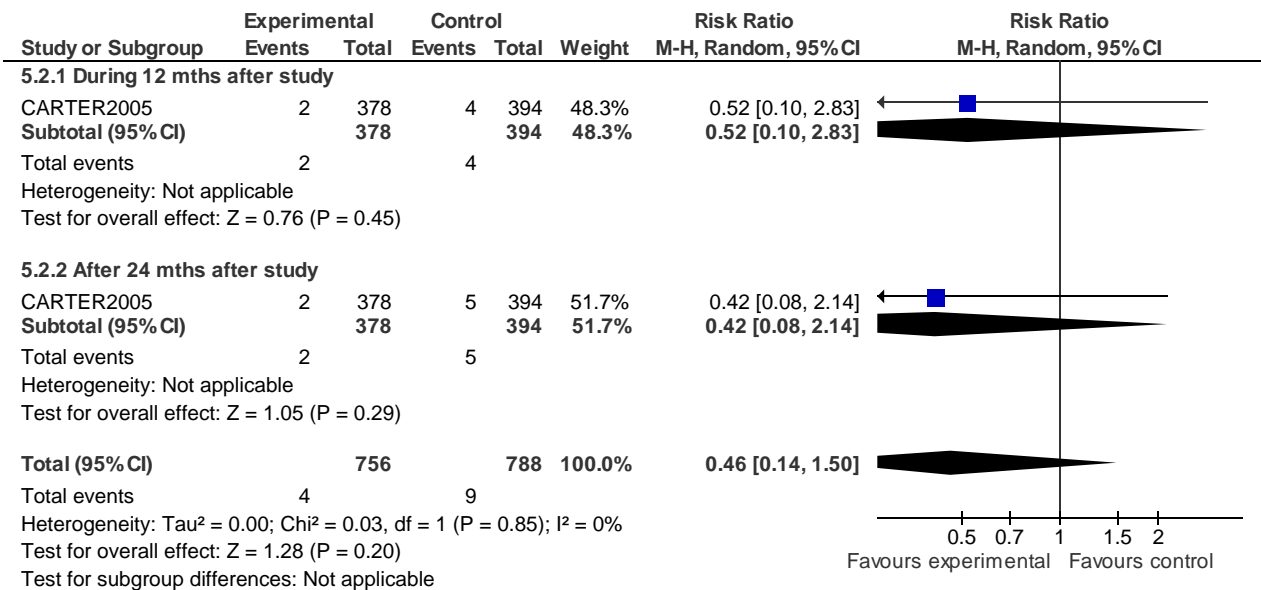
5 Postcards plus TAU versus TAU

5.1 Repetition



(1) adjusted for prior SH  
 (2) no baseline diff in prior DSH

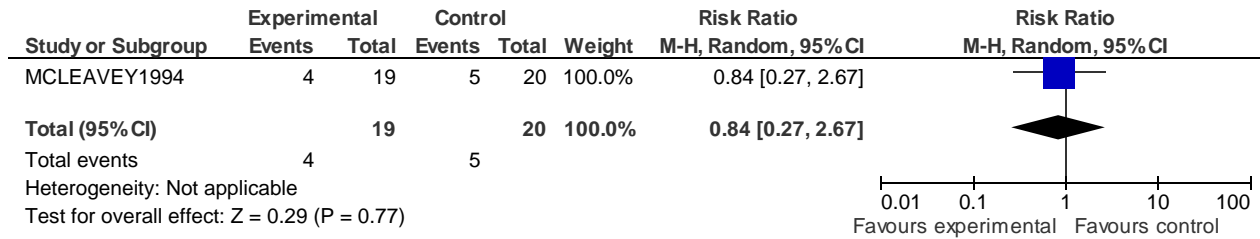
5.2 Suicide



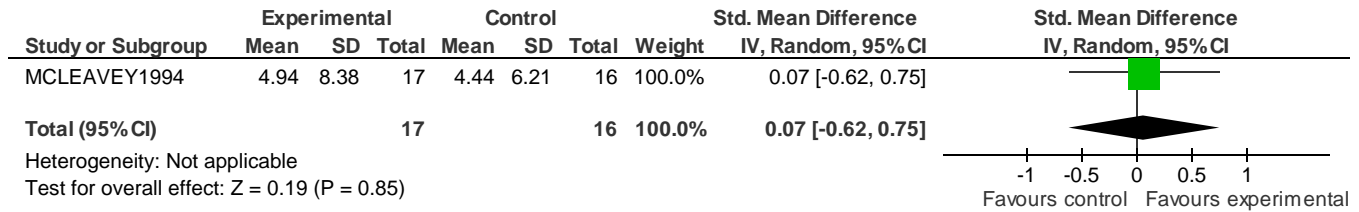
6 Interpersonal Prob Solv versus Brief prob-orient therapy



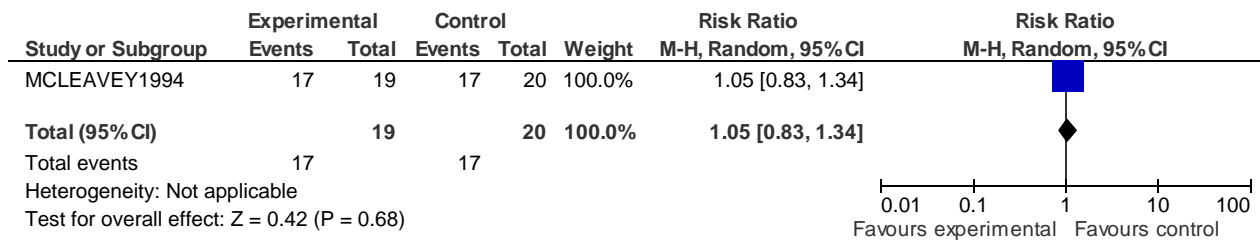
6.1 Repetition within 1 year of treatment



6.2 Hopelessness during 6 months

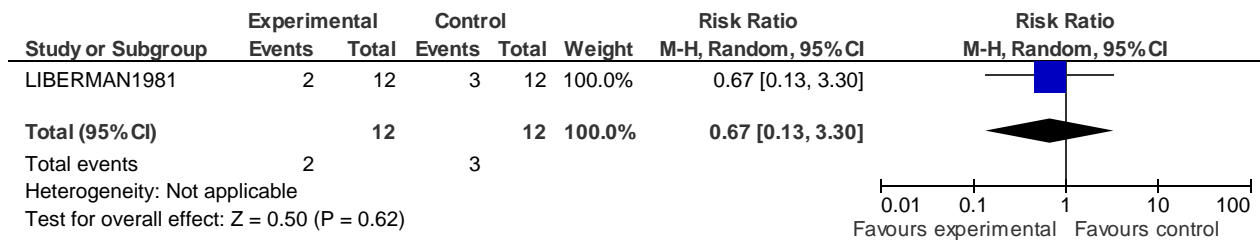


6.3 Attendance

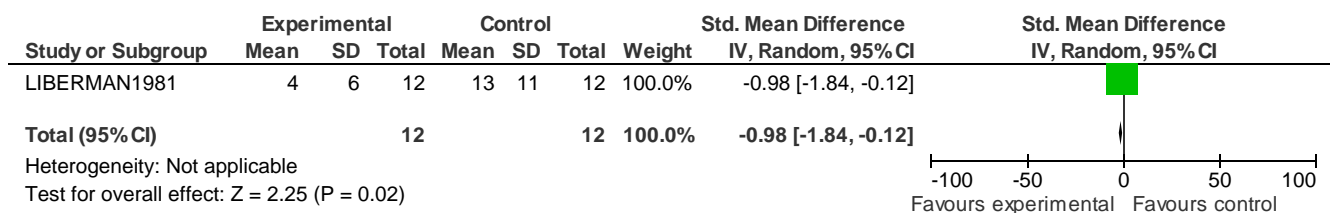


7 Inpatient behaviour therapy versus insight oriented therapy

7.1 Repetition during 24 months follow up

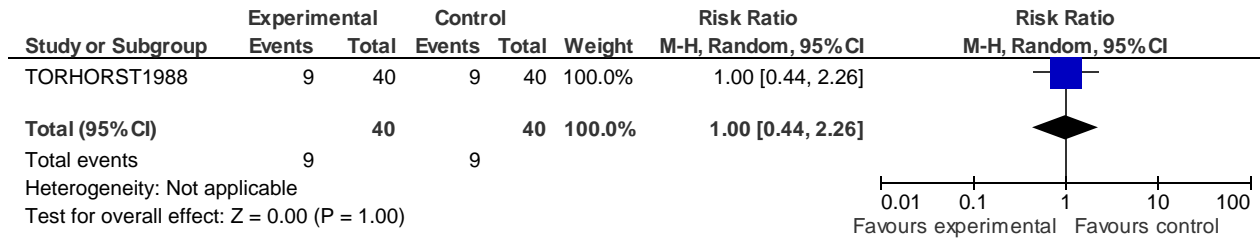


7.2 Depression at 24 weeks



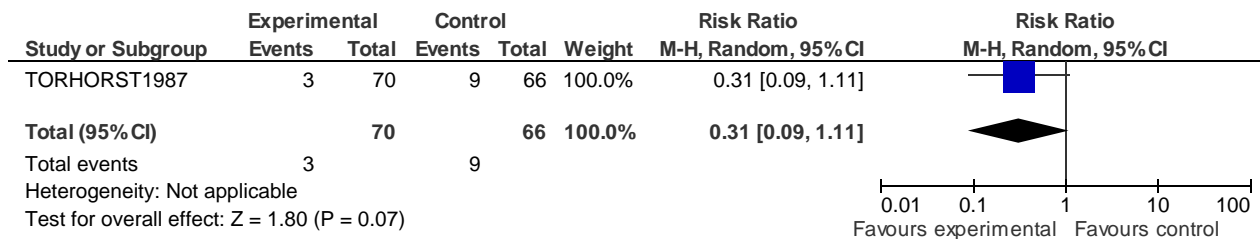
8 long term therapy versus short term therapy

8.1 Repetition at 12 months

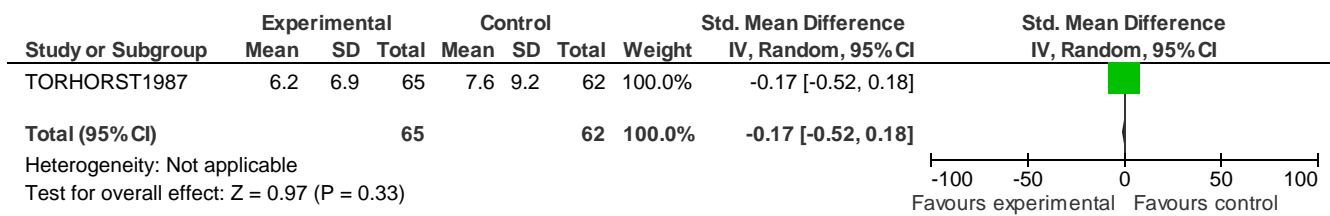


9 Same versus different therapist

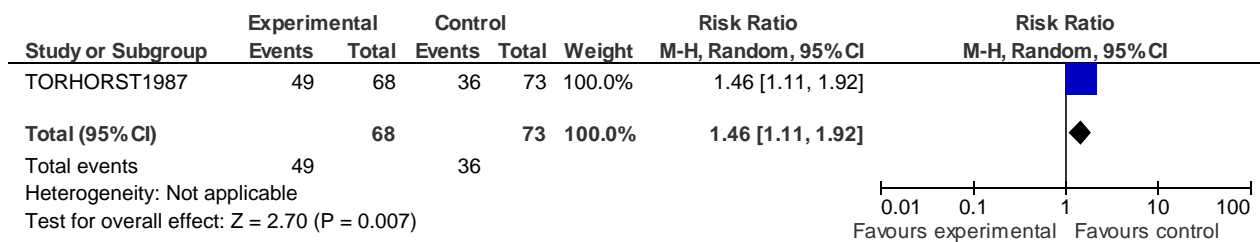
9.1 Repetition at 12 months



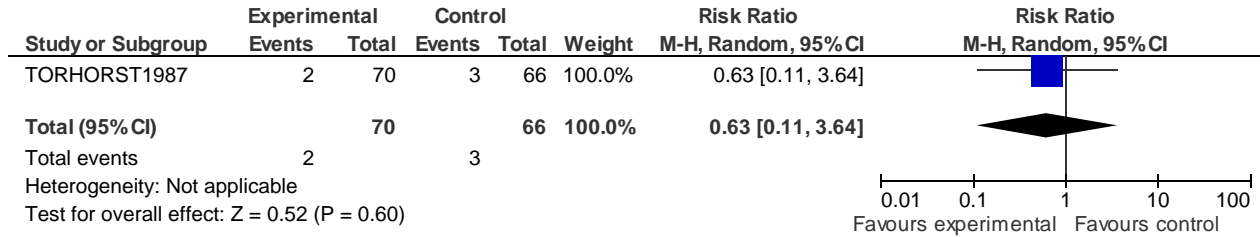
9.2 Depression at 12 mths



9.3 Attendance at least once

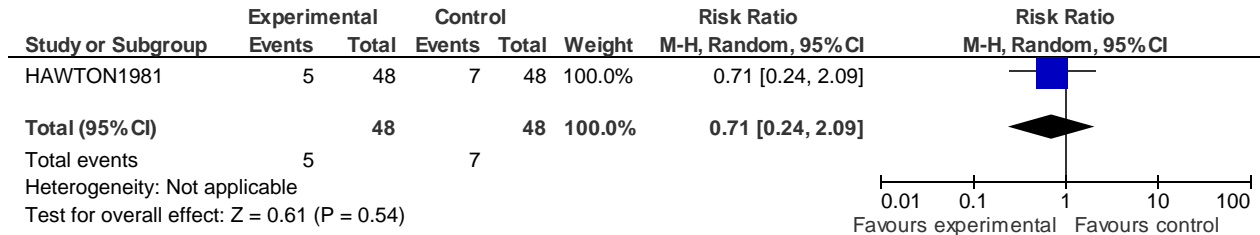


9.4 Suicide

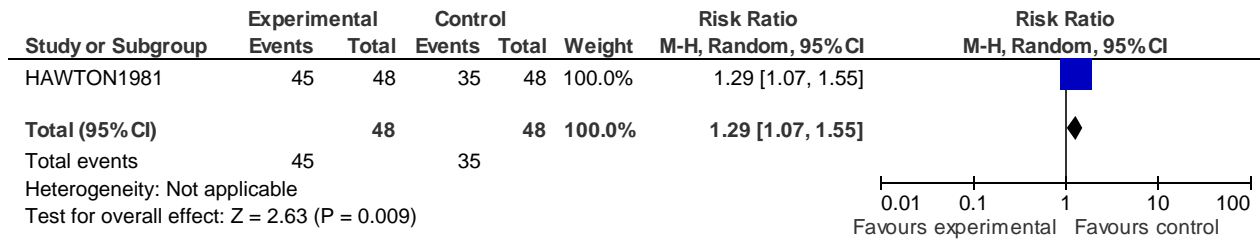


10 Home versus Outpatient interventions

10.1 Repetition

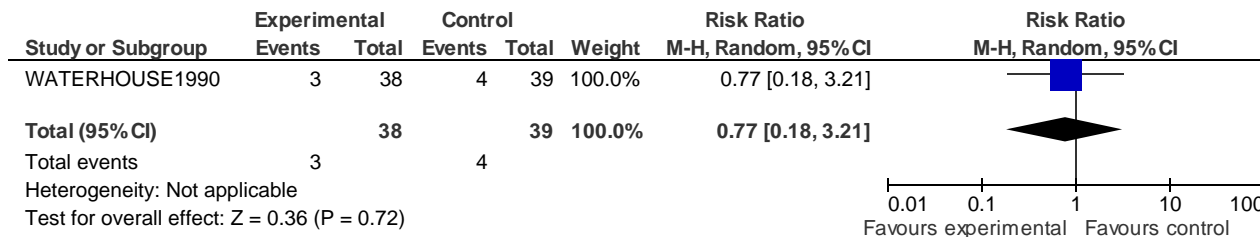


10.2 Attendance in treatment

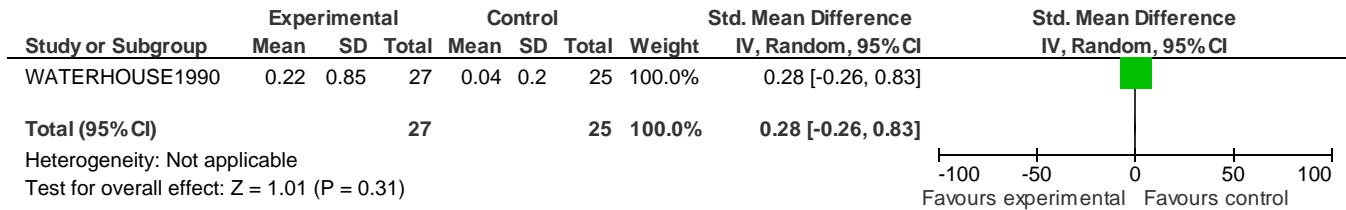


11 General hospital admission versus discharge

11.2 Repetition at 4 months

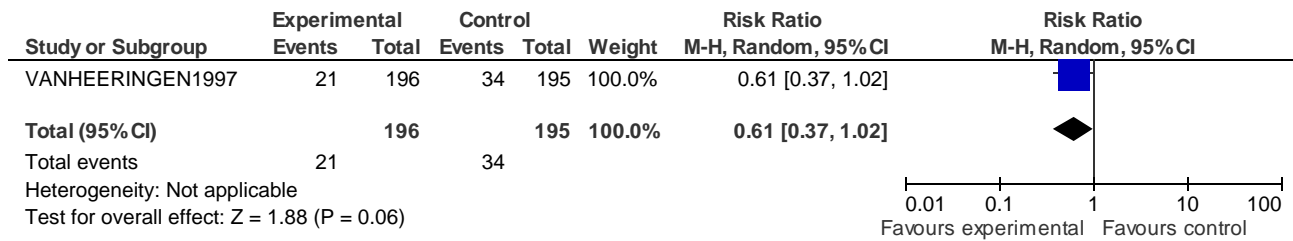


11.3 Suicide ideation at 4 mths

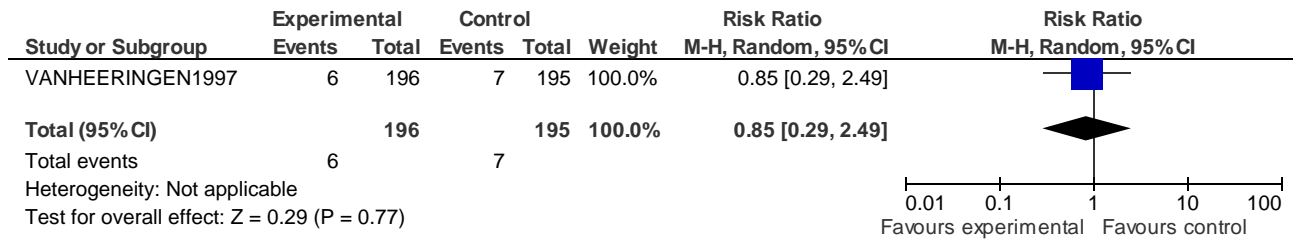


12 Compliance enhance versus TAU

12.1 Repetition at 12 months

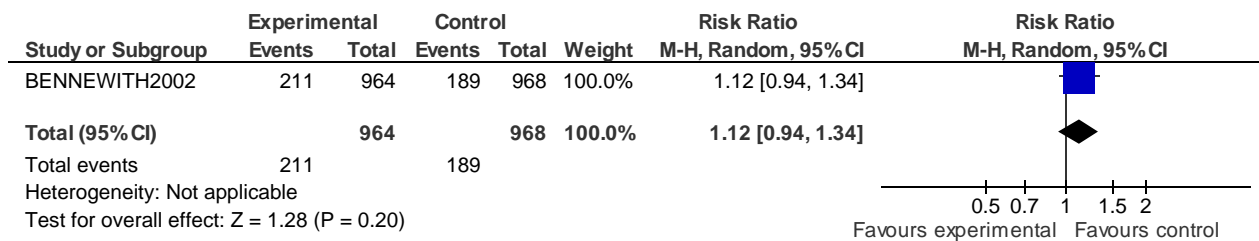


12.2 suicides

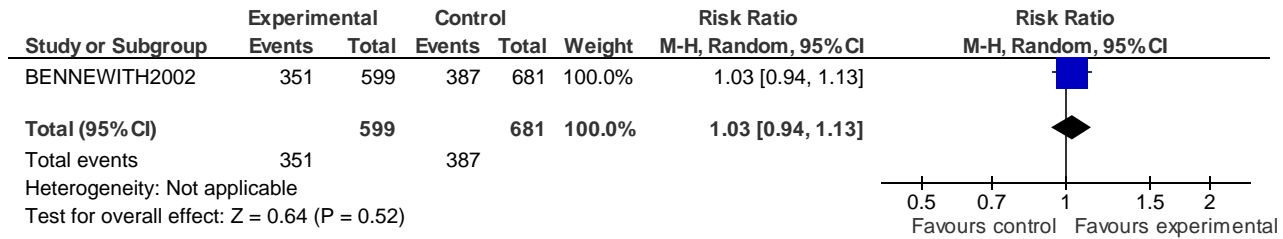


13 GP's letter to patient versus Routine care

13.1 Repetition during first 12 months

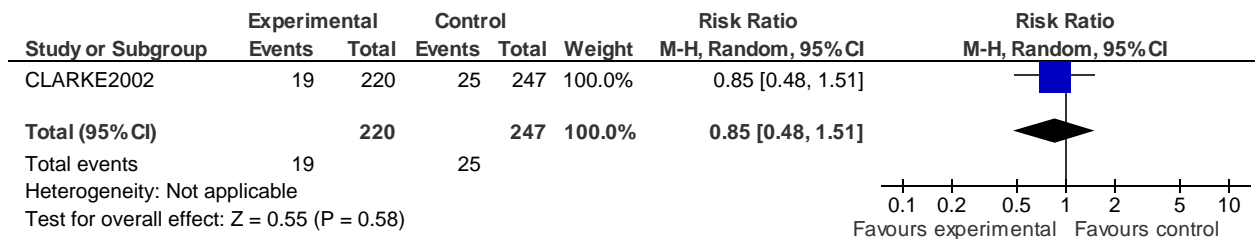


13.2 Contact with services during first 6 weeks

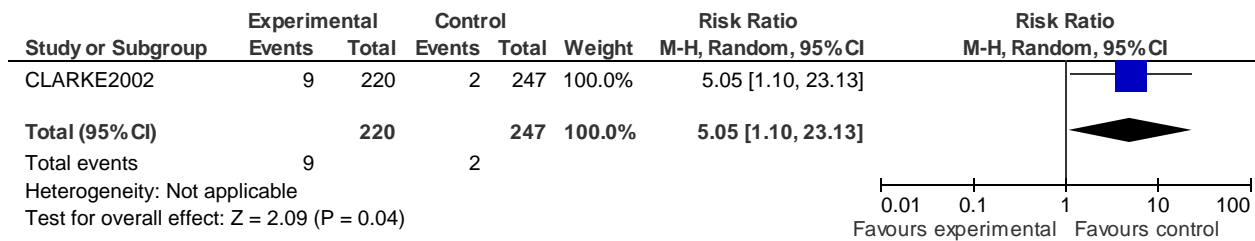


14 Case management versus Routine care

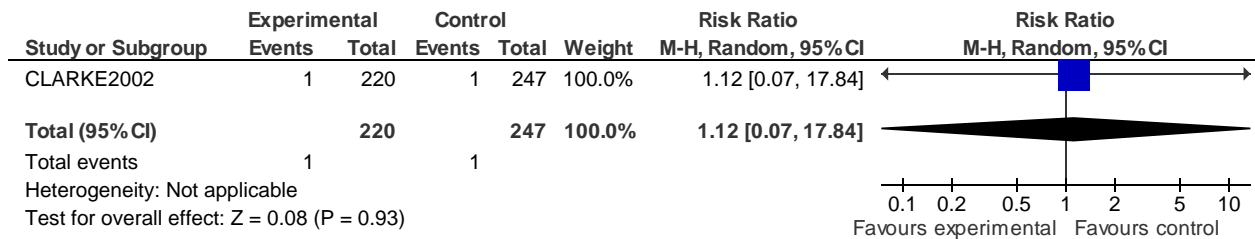
14.1 Readmission for repetition



14.2 Multiple Readmission for repetition

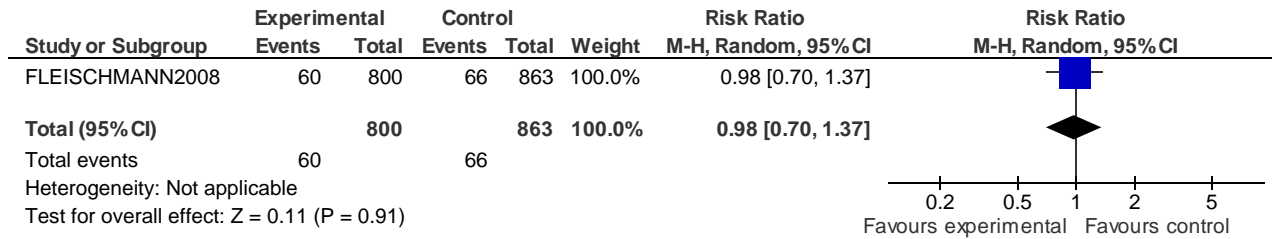


14.3 Suicides at 36 months follow up

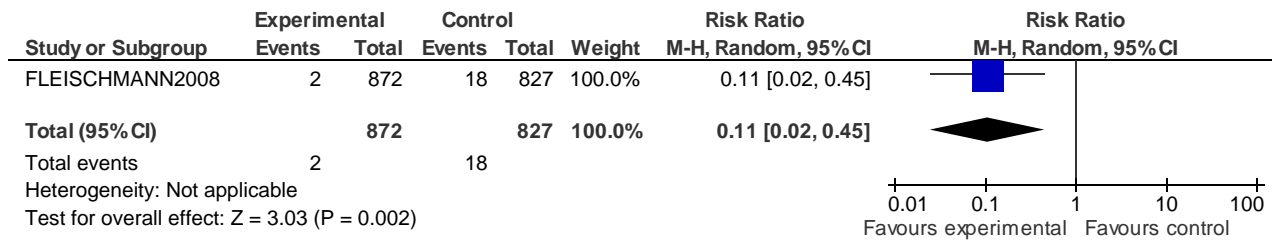


15 Supportive contact versus TAU

15.1 Repetition at 18 months

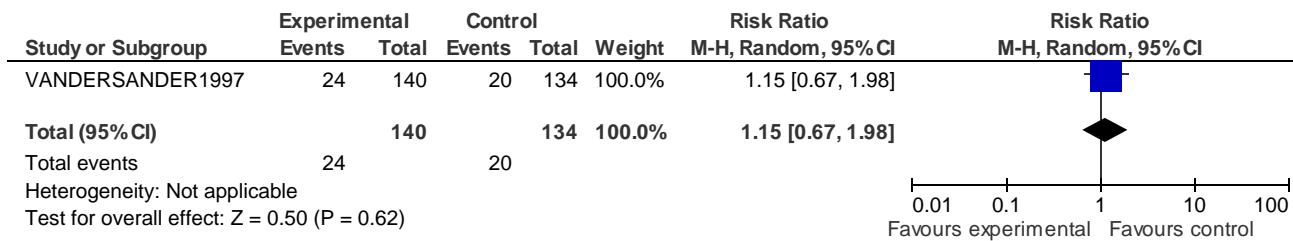


15.2 Suicides at 18 months

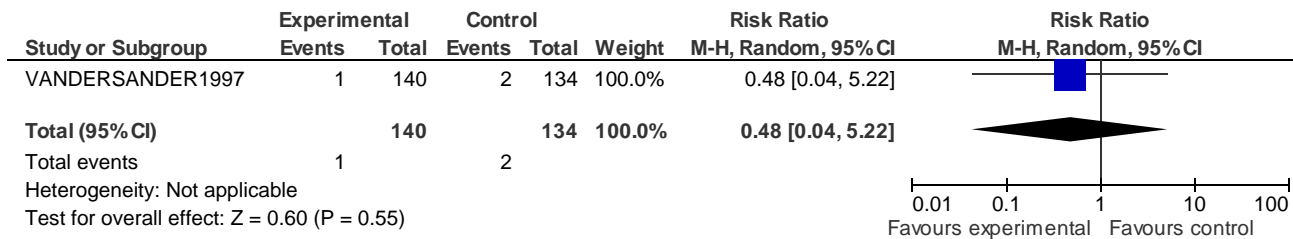


16 Intensive intervention and community treatment versus routine care

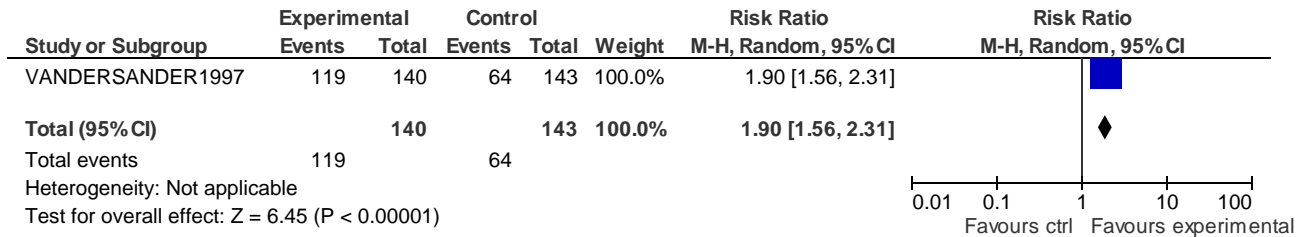
16.1 Per protocol repetition at last follow up



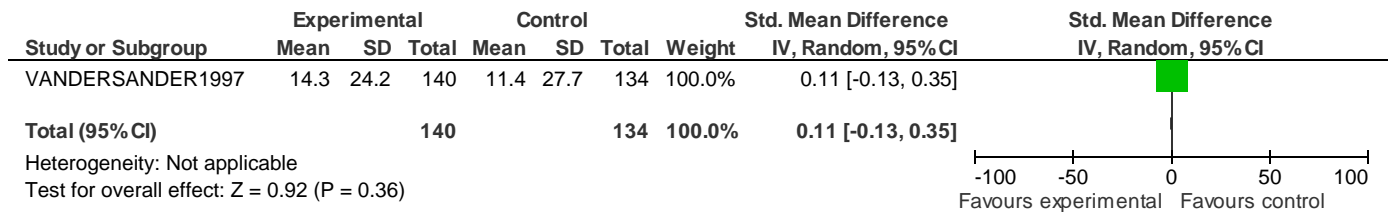
16.2 Suicides during follow up



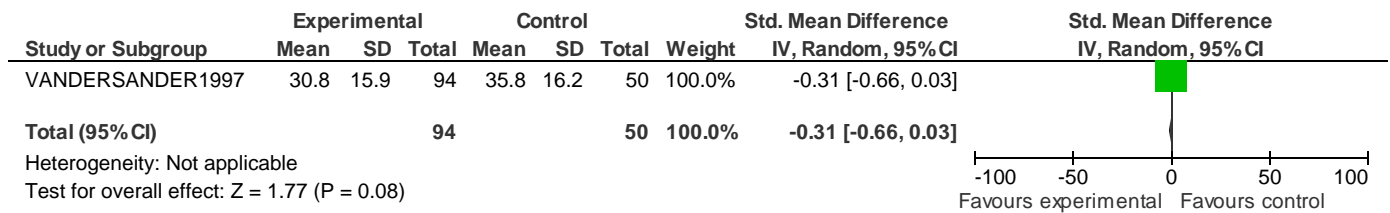
16.3 Attendance at treatment at 12 months



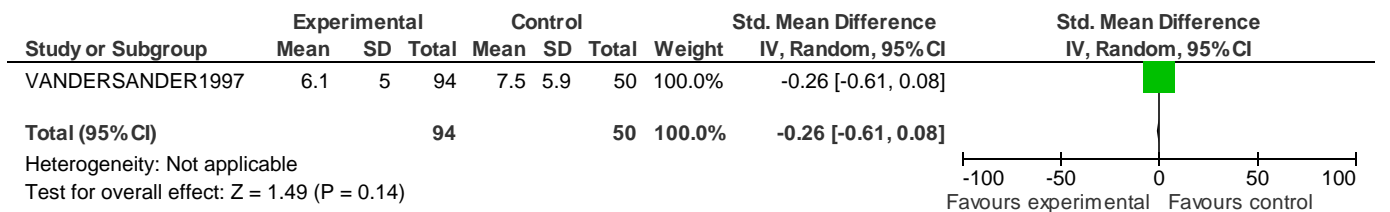
16.4 Attendance



16.5 Depression

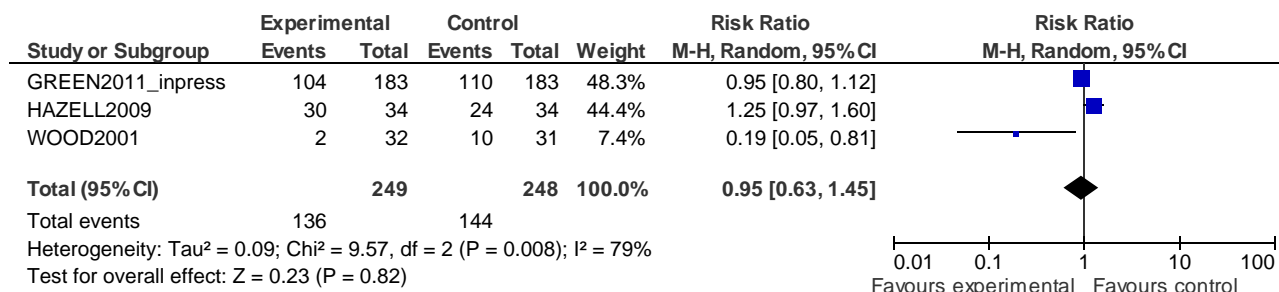


16.6 Hopelessness

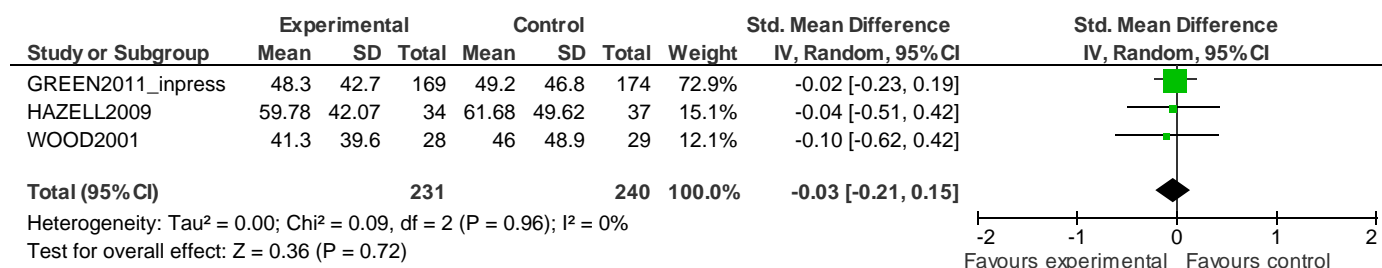


18 Group therapy versus TAU for adolescents

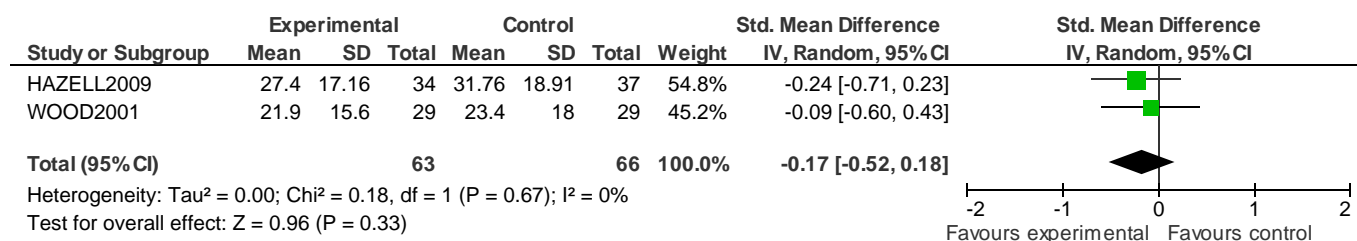
18.1 Per protocol repetition during first 12 months



18.2 Per protocol suicidal ideation at last follow up

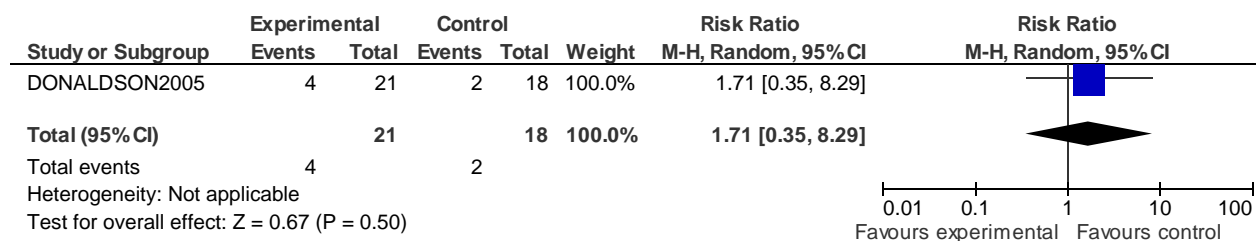


18.3 Per protocol depression at last follow up



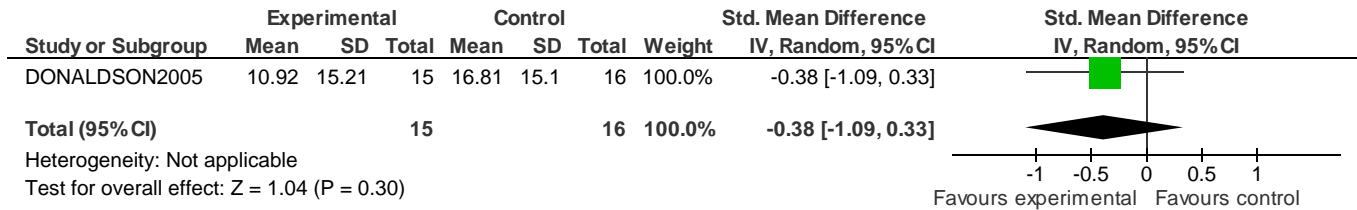
19 Psychological therapy versus Usual care for adolescents

19.1 Repetition at 6 months after trial entry

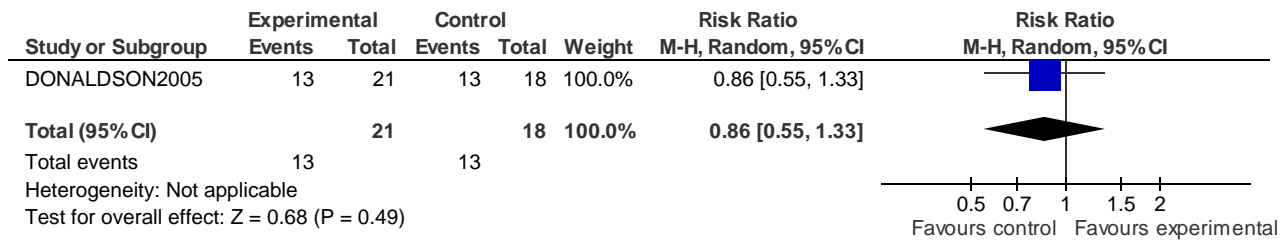




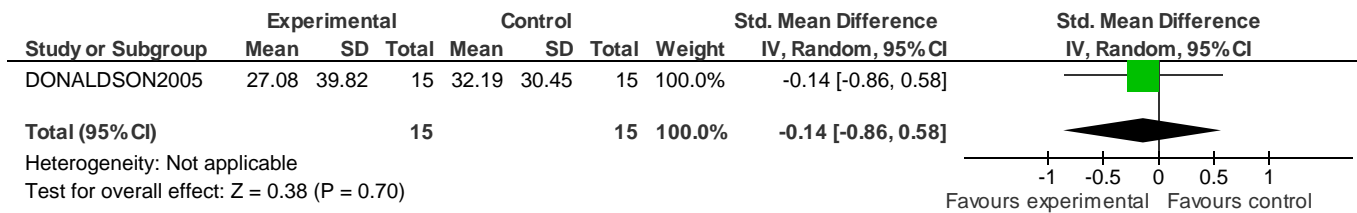
19.2 Depression at 6 months after trial entry



19.3 Adherence-Treatment completion

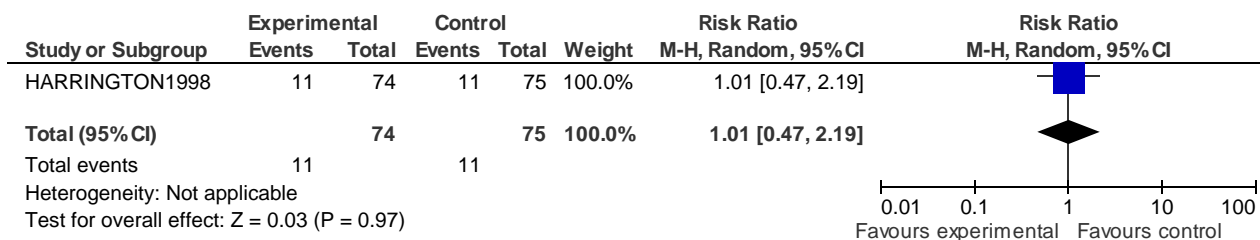


19.4 Suicidal ideation at 6 months after trial entry

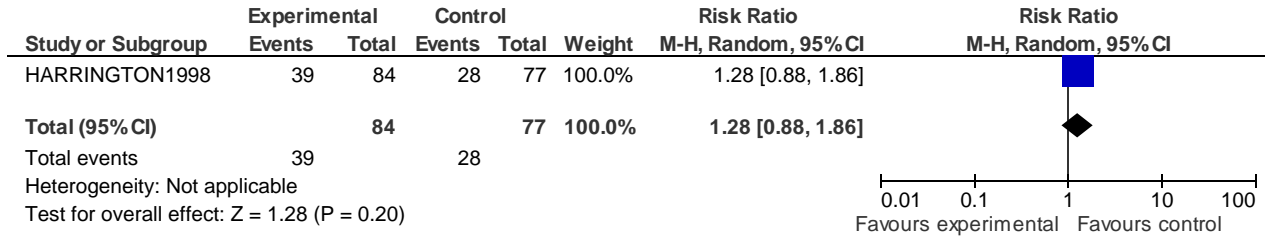


20 Home based family intervention versus TAU for adolescents

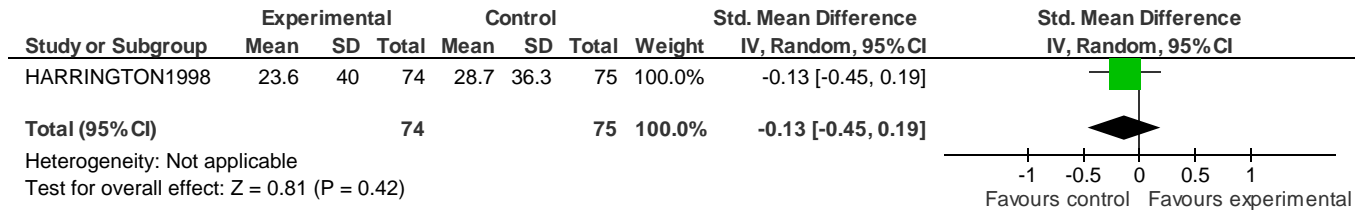
20.1 Repetition in 6 months



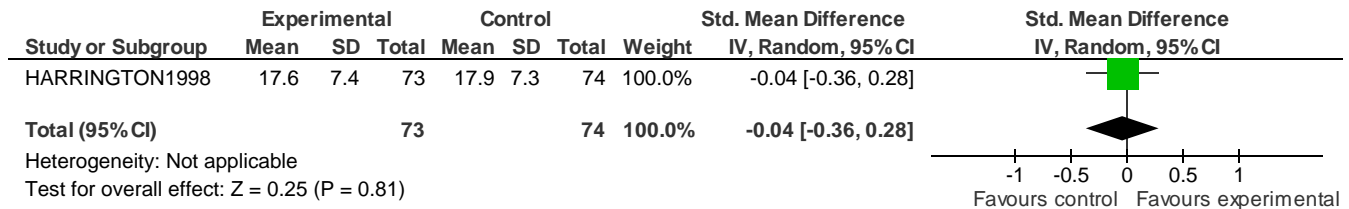
20.2 Attendance



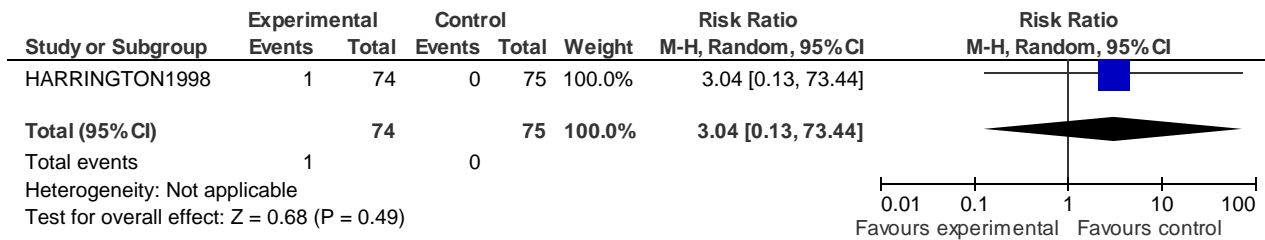
20.3 Suicide ideation at 6 months



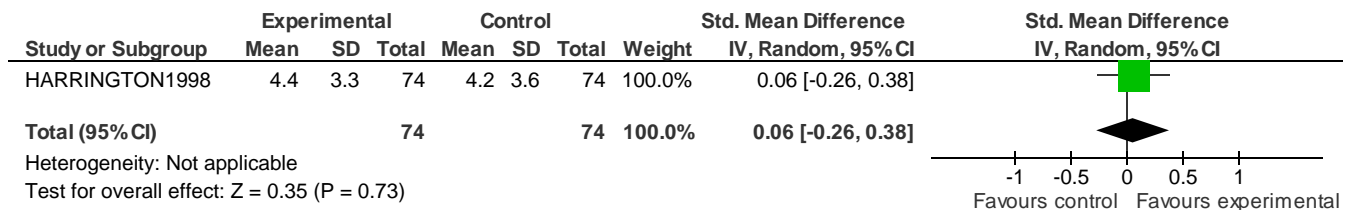
20.4 Problem solving scores at 6 months



20.5 Suicide

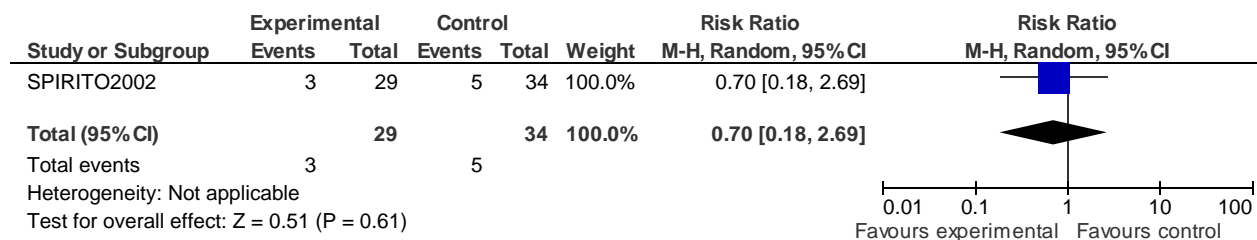


20.6 Hopelessness scores at 6 months

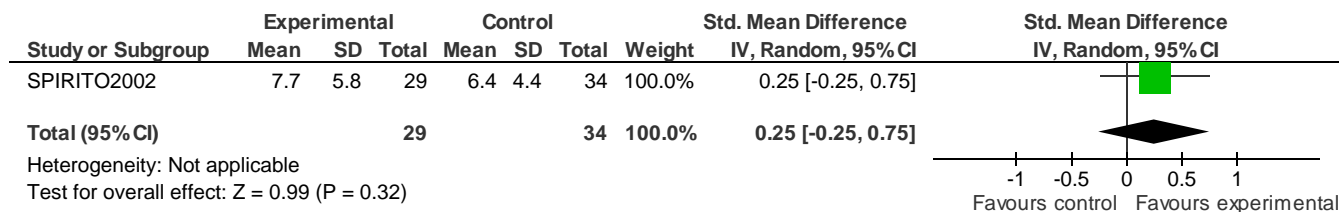


21 Standard disposition planning with added compliance enhancement vs without for DSH adolescents

21.1 Repetition at 3 months from trial entry



21.2 No. of treatment sessions



21.4 Attendance

