

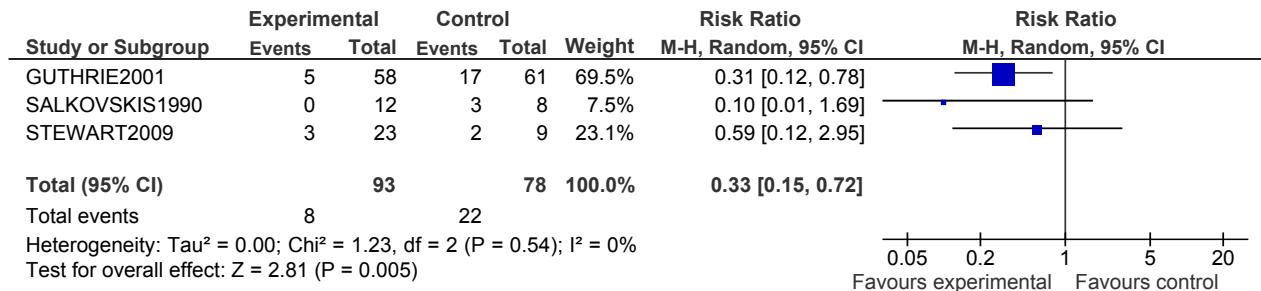
APPENDIX 16A: CLINICAL EVIDENCE FOREST PLOTS: PSYCHOLOGICAL AND PSYCHOSOCIAL INTERVENTIONS

| | |
|---|----|
| Psychological intervention versus treatment as usual..... | 2 |
| Intensive multi-modal intervention versus treatment as usual..... | 6 |
| Emergency card versus treatment as usual..... | 6 |
| Telephone contact versus treatment as usual..... | 7 |
| Postcard interventions plus treatment as usual versus treatment as usual..... | 9 |
| Interpersonal problem-solving skills training versus brief problem-oriented therapy..... | 10 |
| Inpatient behaviour therapy versus insight-oriented therapy..... | 10 |
| Long-term therapy versus short-term therapy | 11 |
| Same therapist versus different therapist..... | 11 |
| Home versus outpatient problem-solving therapy..... | 12 |
| General hospital admission versus discharge..... | 12 |
| Compliance enhancement versus treatment as usual..... | 13 |
| GP letter to patient/enhanced care versus treatment as usual..... | 13 |
| Case management versus treatment as usual | 14 |
| Supportive contact versus treatment as usual..... | 15 |
| Intensive inpatient and community treatment versus treatment as usual | 15 |
| Group psychotherapy versus treatment as usual for children and young people..... | 17 |
| CBT versus treatment as usual for young people..... | 17 |
| Home-based family intervention versus treatment as usual for young people..... | 18 |
| Standard disposition planning with and without added compliance enhancement for young people..... | 20 |

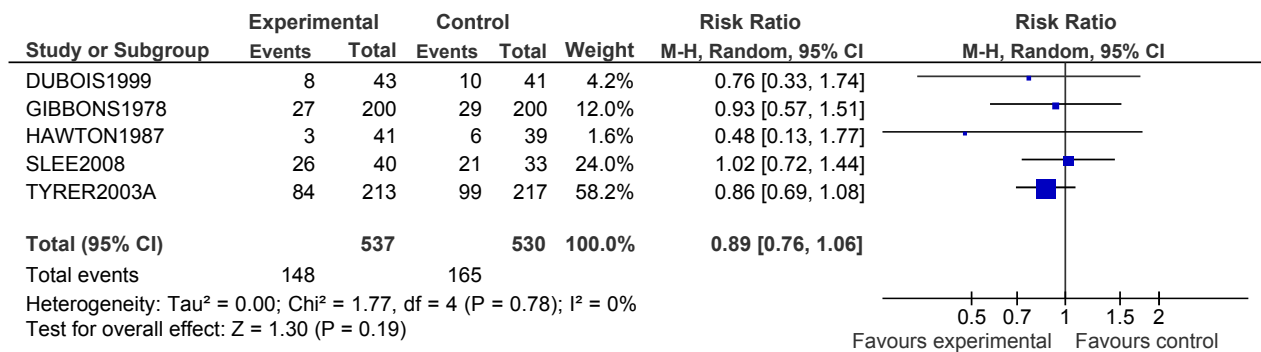
Appendix 16a- Psychological interventions forest plots

1 Psychological interventions versus treatment as usual

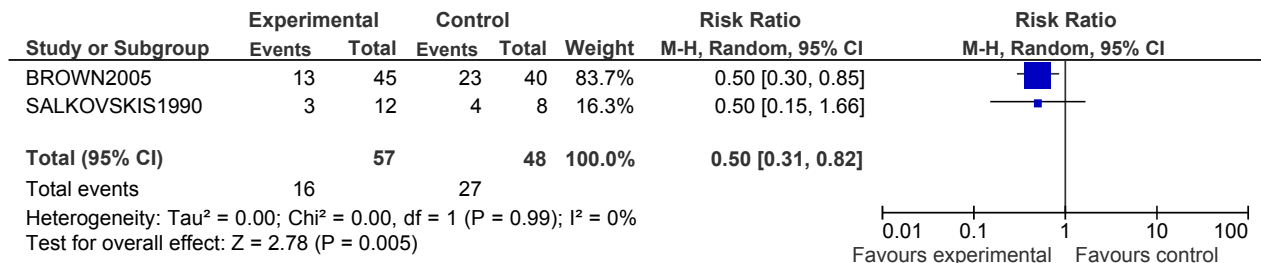
1.1 Per protocol repetition 0 to 6 months



1.2 Per protocol repetition 6 to 12 months

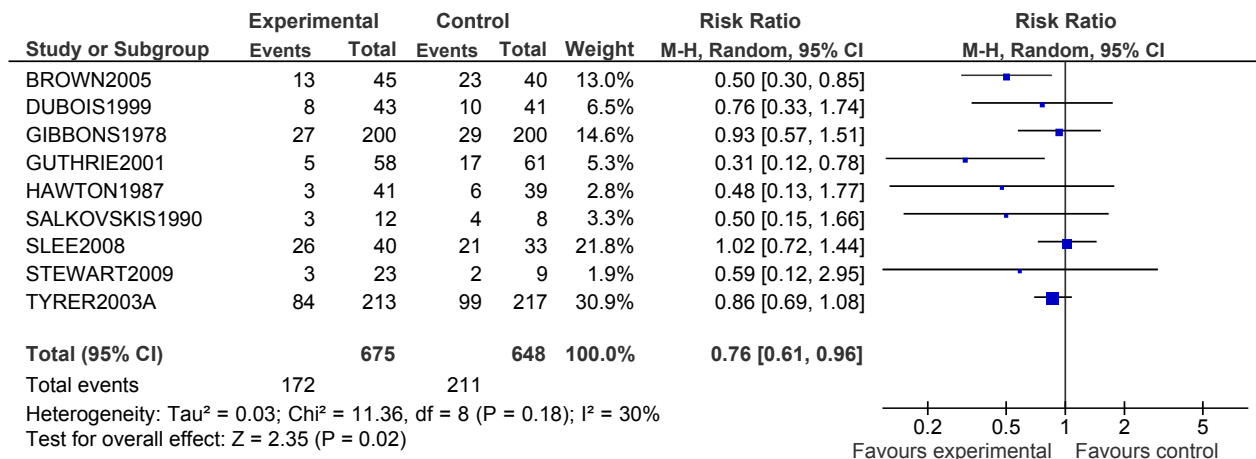


1.3 Per protocol repetition over 12 months

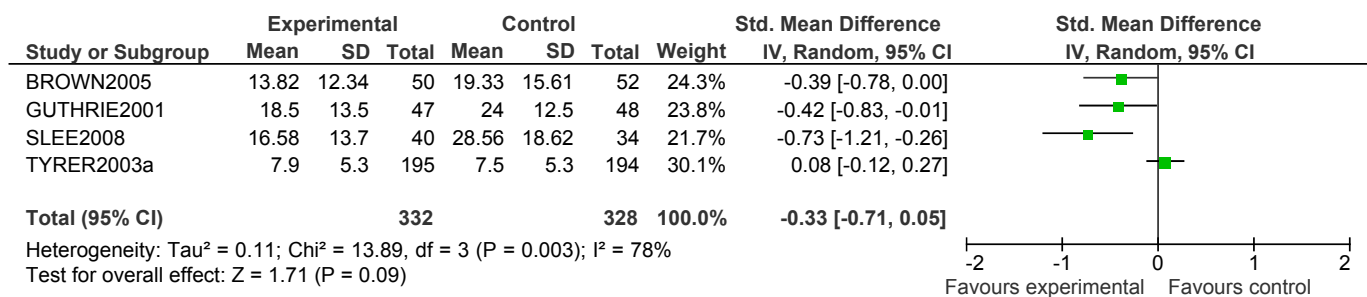


Appendix 16a- Psychological interventions forest plots

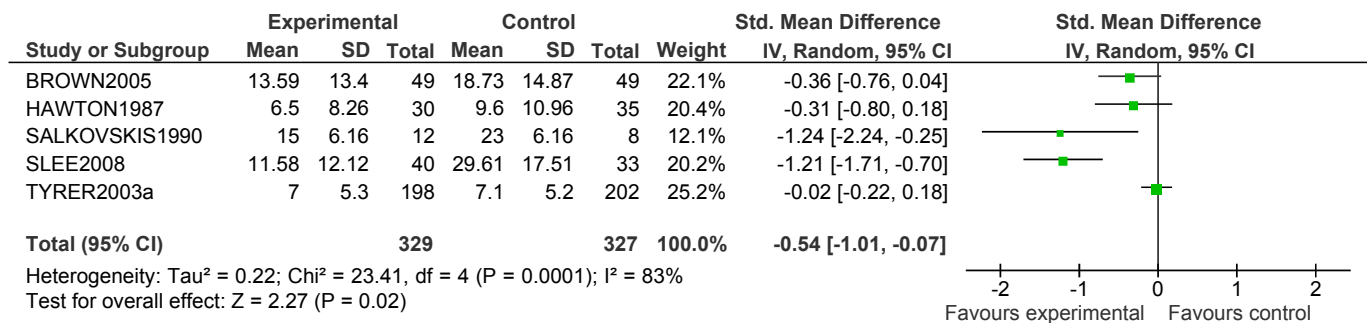
1.4 Per protocol repetition (last follow-up)



1.5 Depression scores at 6 months

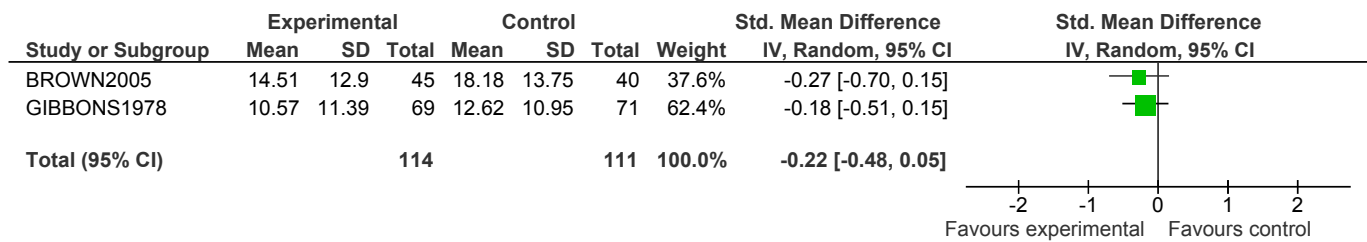


1.6 Depression scores at 12 months

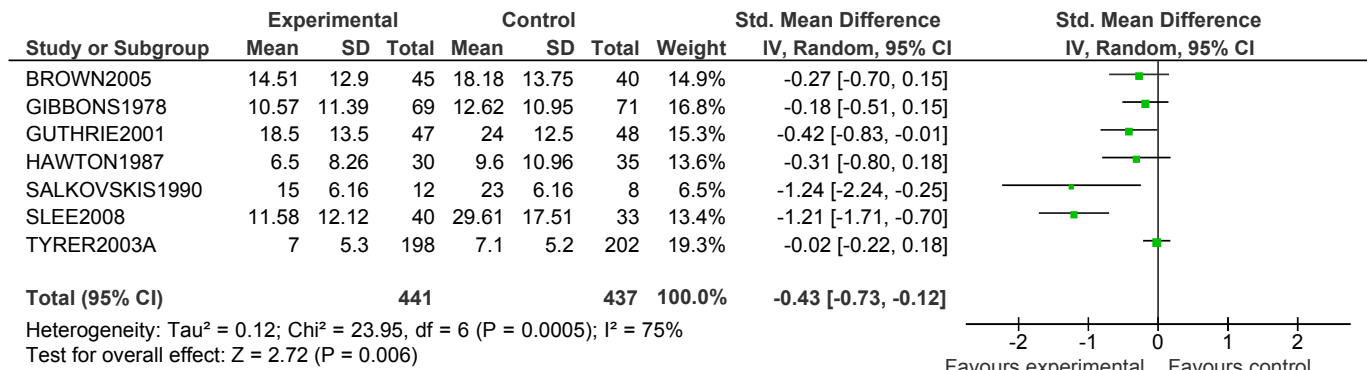


Appendix 16a- Psychological interventions forest plots

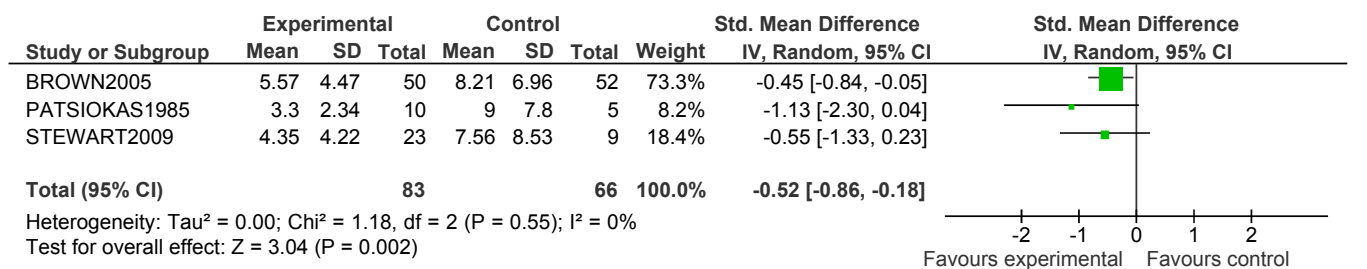
1.7 Depression scores over 12 months



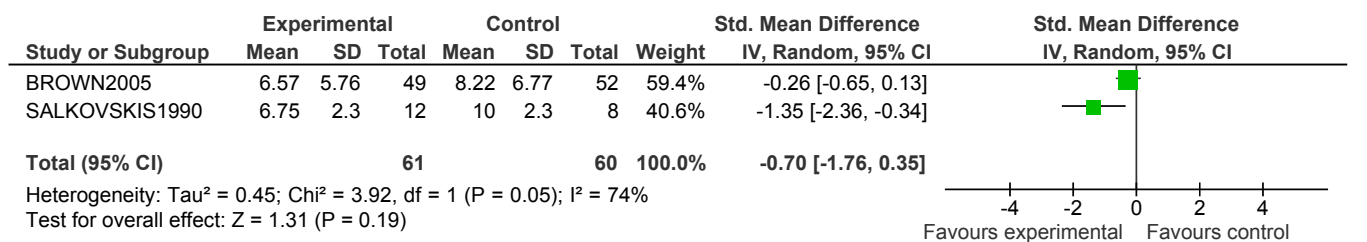
1.8 Depression scores at last follow-up



1.9 Hopelessness scores during 0 to 6 months

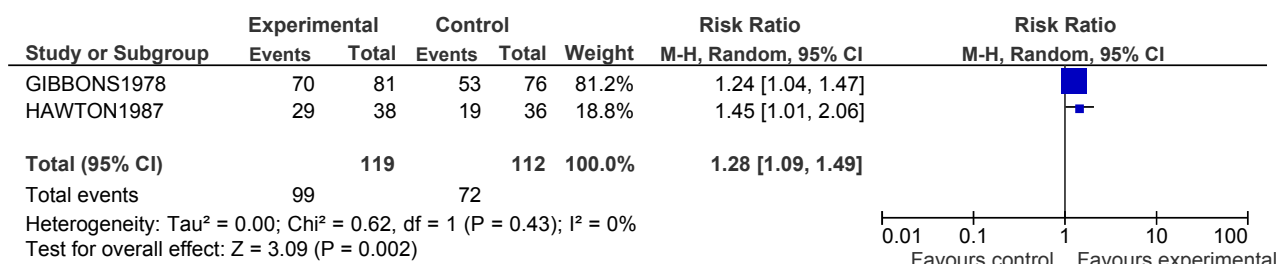


1.10 Hopelessness scores at 12 months

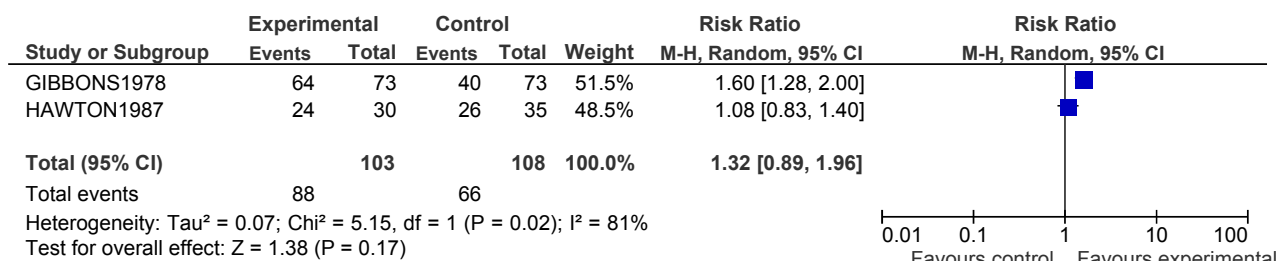


Appendix 16a- Psychological interventions forest plots

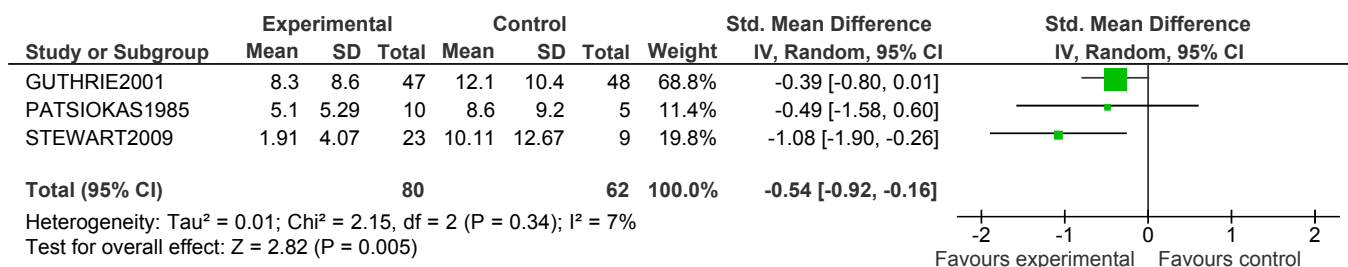
1.11 Number of participants with improved problems at 4 months



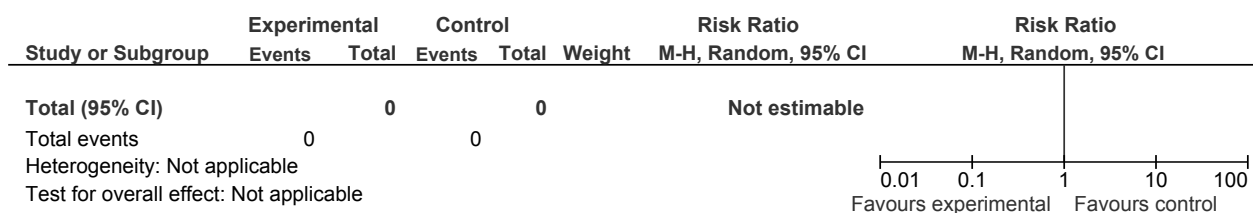
1.12 Number of participants with improved problems at last follow-up



1.13 Suicide ideation scores during 0 to 6 months



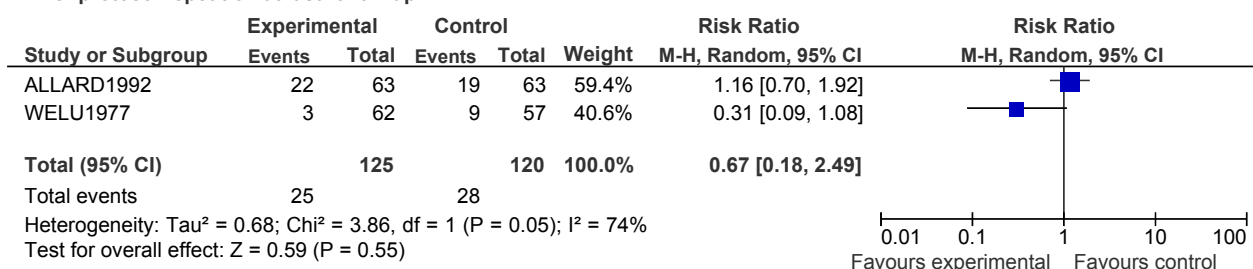
1.14 Suicides at last follow-up



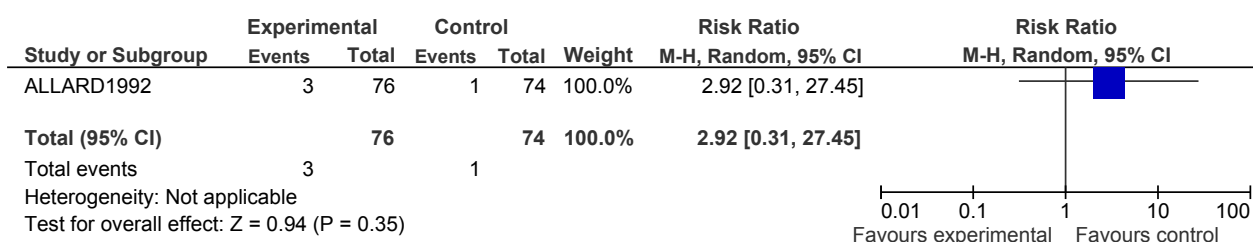
Appendix 16a- Psychological interventions forest plots

2 Intensive multi-modal intervention versus treatment as usual

2.1 Per protocol repetition at last follow up

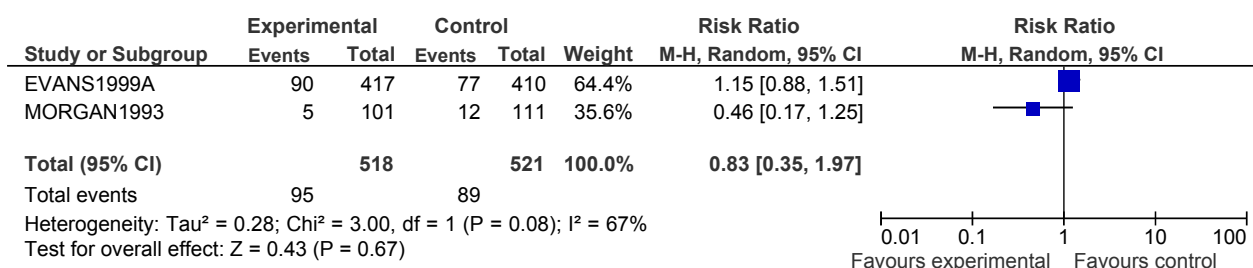


2.2 Suicides during follow-up

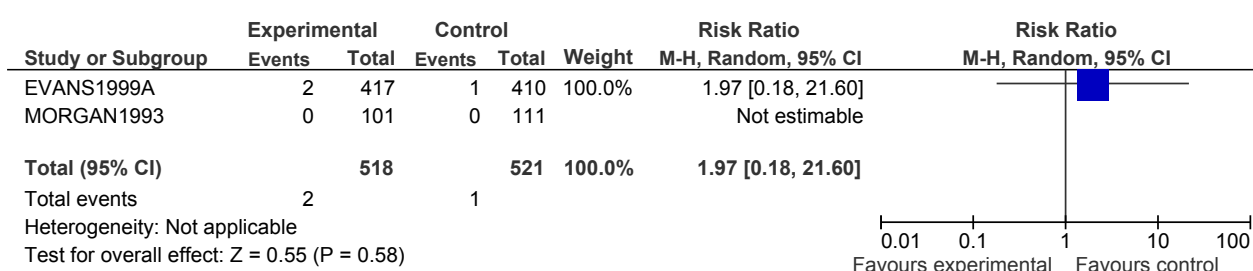


3 Emergency card versus treatment as usual

3.1 Repetition at 12 months

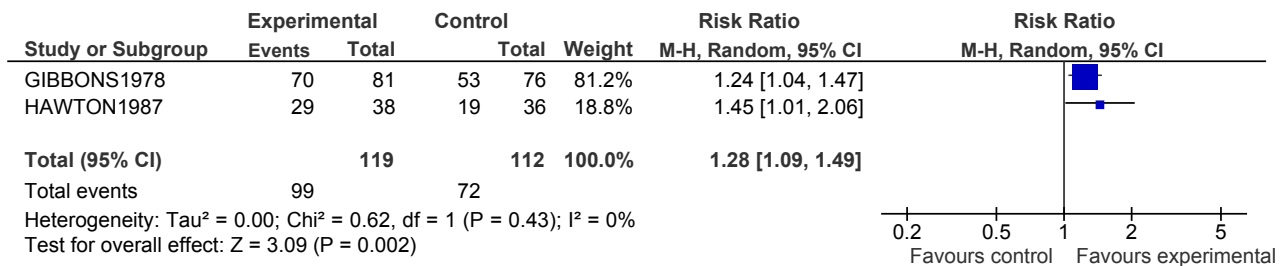


3.2 Suicides



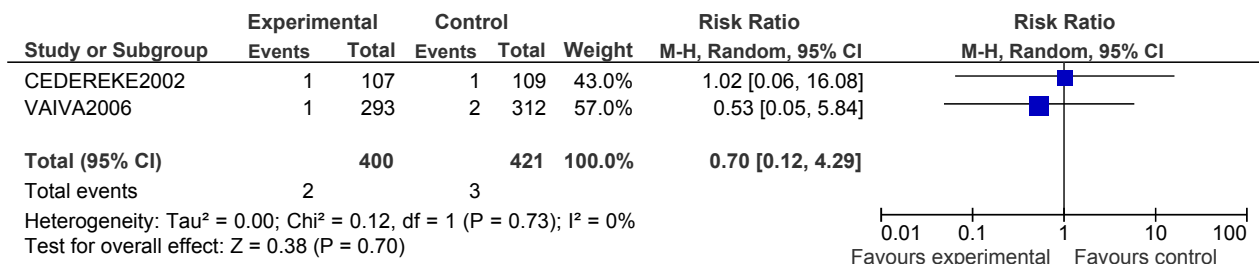
Appendix 16a- Psychological interventions forest plots

3.3 Number of participants with improved problems at 4 months

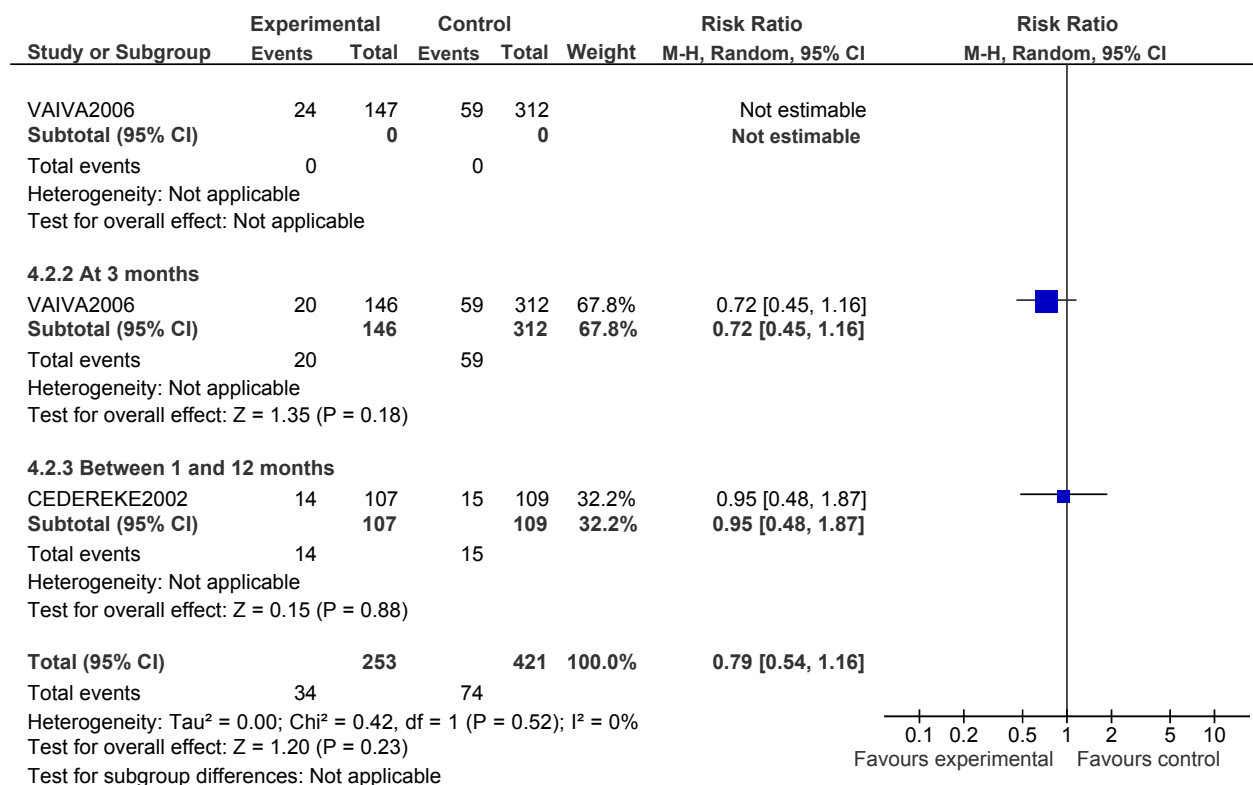


4 Telephone contact versus treatment as usual

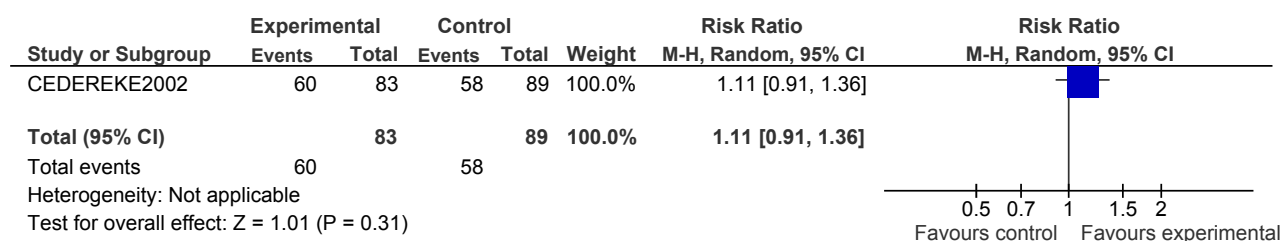
4.1 Suicide at last follow-up



4.2 Repetition



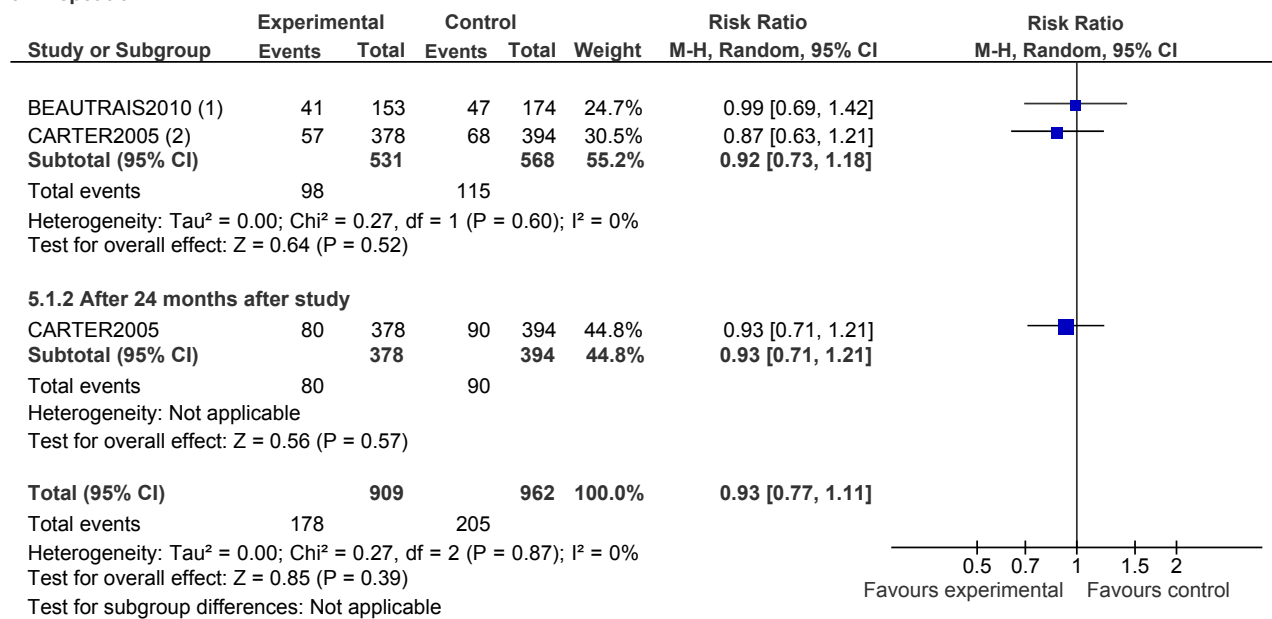
4.3 Attendance (at least once during 12 months' follow-up)



Appendix 16a- Psychological interventions forest plots

5 Postcard interventions plus treatment as usual versus treatment as usual

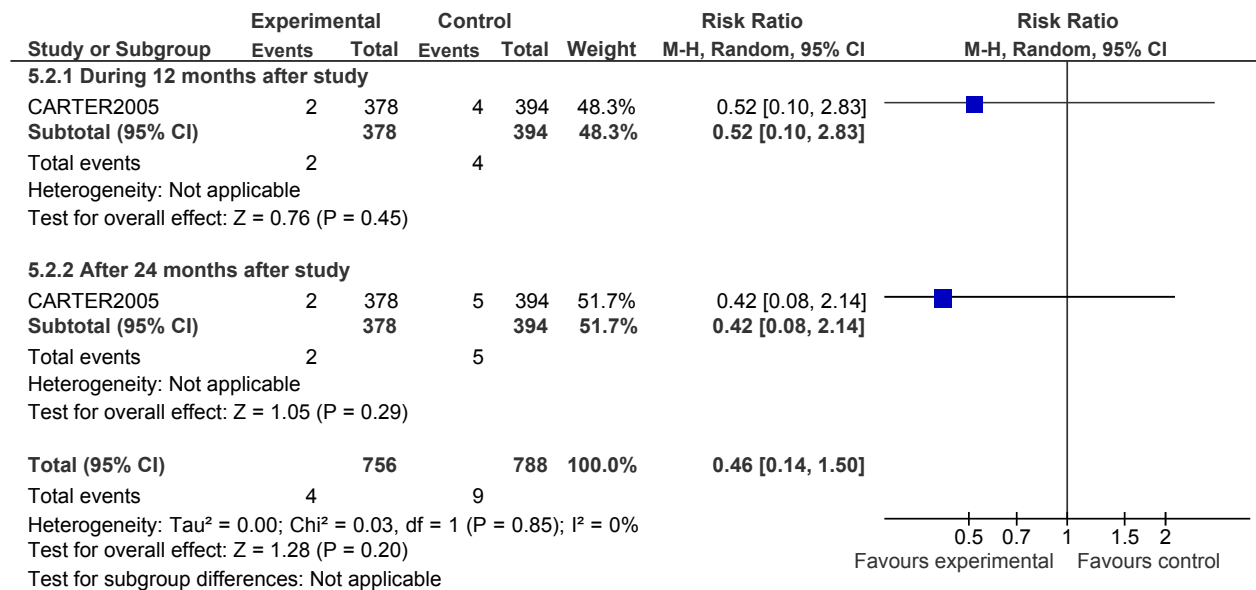
5.1 Repetition



(1) Adjusted for prior self-harm

(2) No baseline difference in prior deliberate self-harm

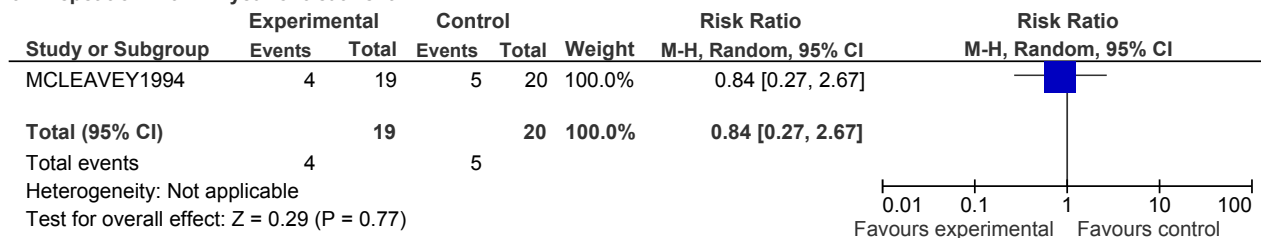
5.2 Suicide



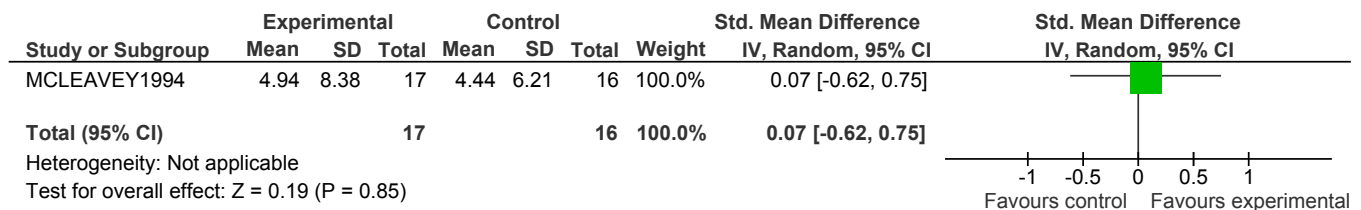
Appendix 16a- Psychological interventions forest plots

6 Interpersonal problem-solving skills training versus brief problem-oriented therapy

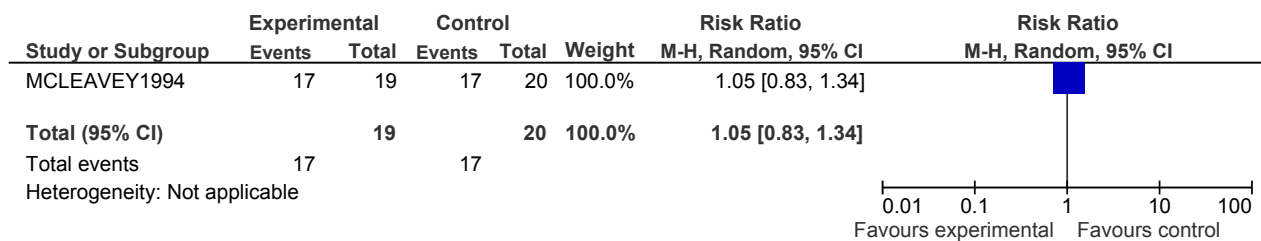
6.1 Repetition within 1 year of treatment



6.2 Hopelessness during 6 months

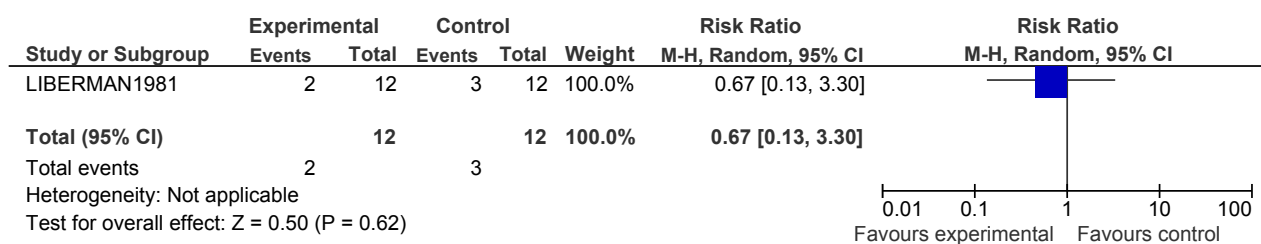


6.3 Attendance

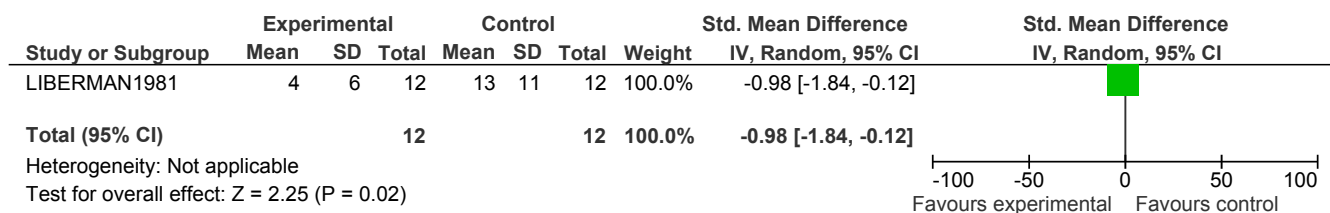


7 Inpatient behaviour therapy versus insight-oriented therapy

7.1 Repetition during 24 month's follow-up



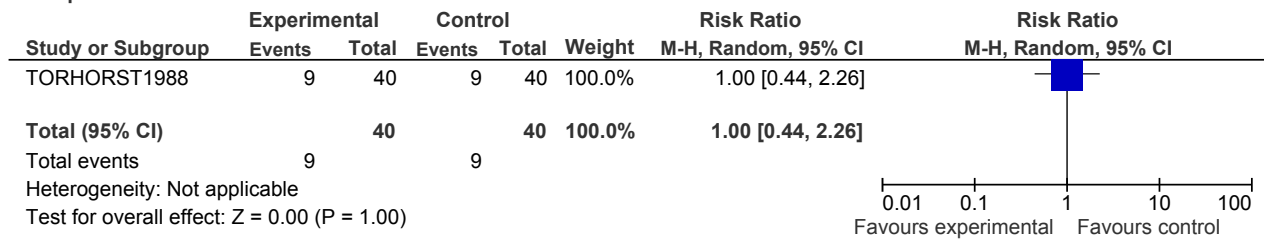
7.2 Depression at 24 weeks



Appendix 16a- Psychological interventions forest plots

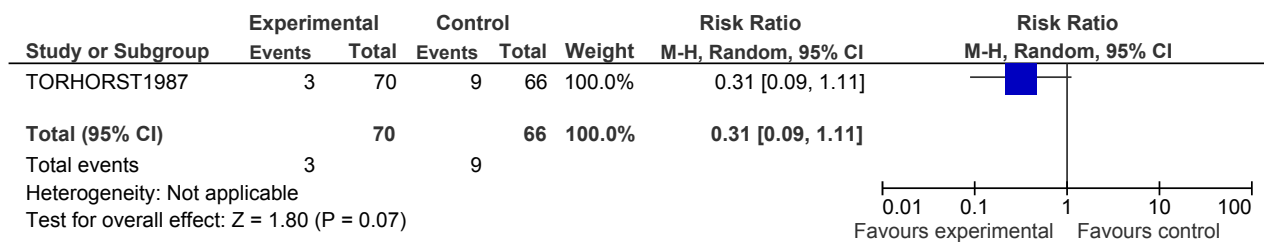
8 Long-term therapy versus short-term therapy

8.1 Repetition at 12 months

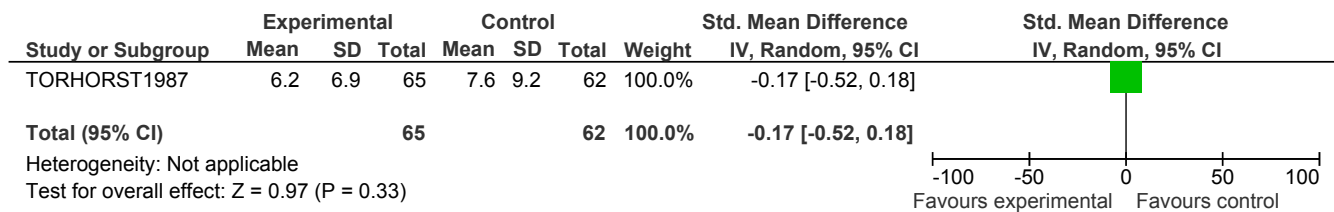


9 Same therapist versus different therapist

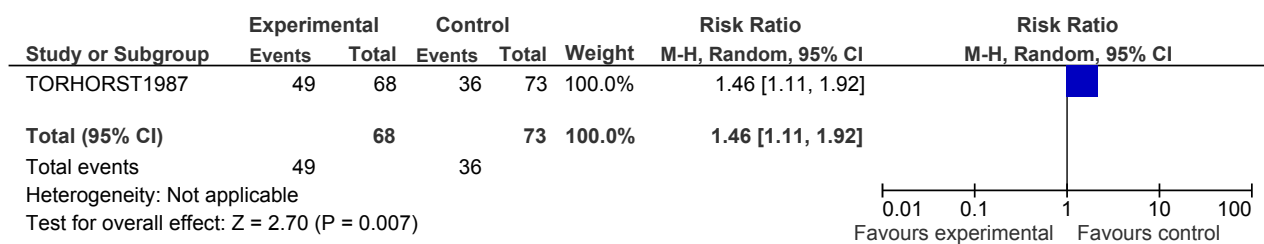
9.1 Repetition at 12 months



9.2 Depression at 12 months

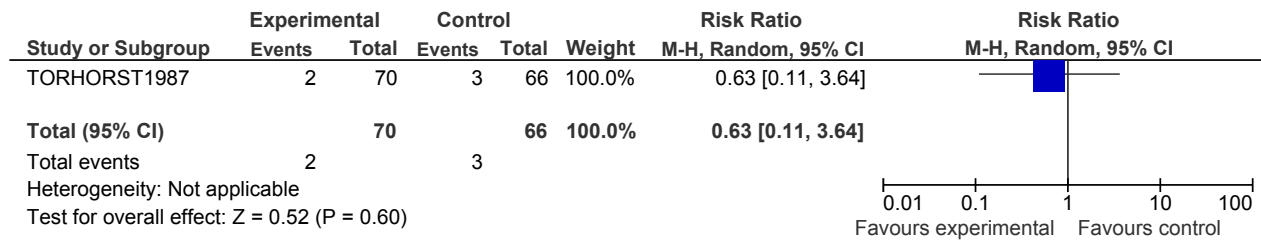


9.3 Attendance at least once



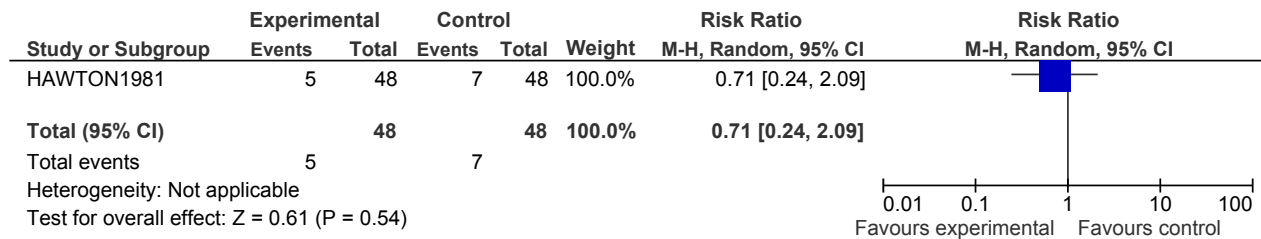
Appendix 16a- Psychological interventions forest plots

9.4 Suicide

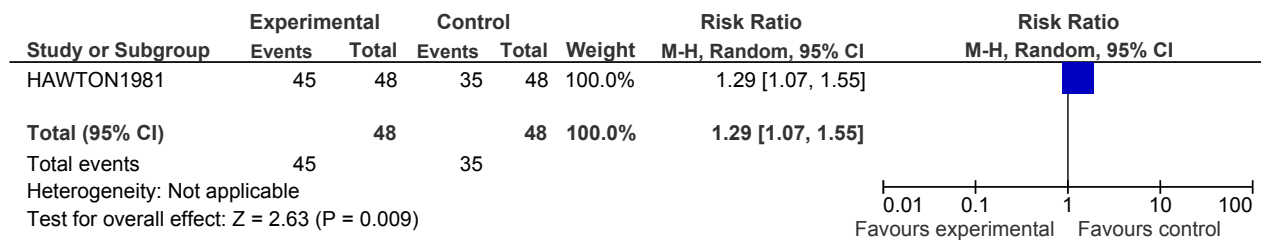


10 Home versus outpatient problem-solving therapy

10.1 Repetition

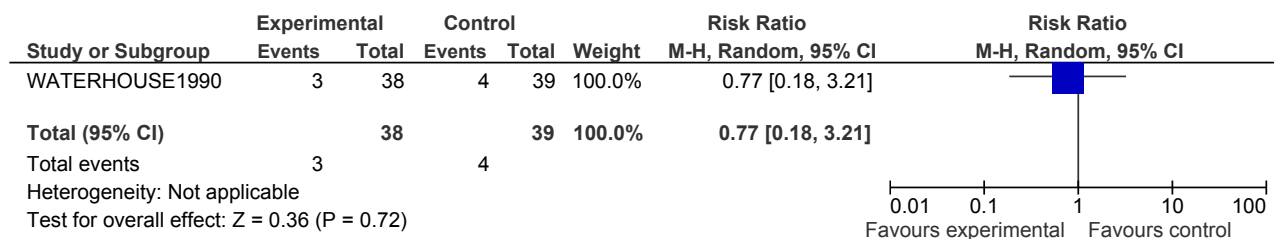


10.2 Attendance in treatment



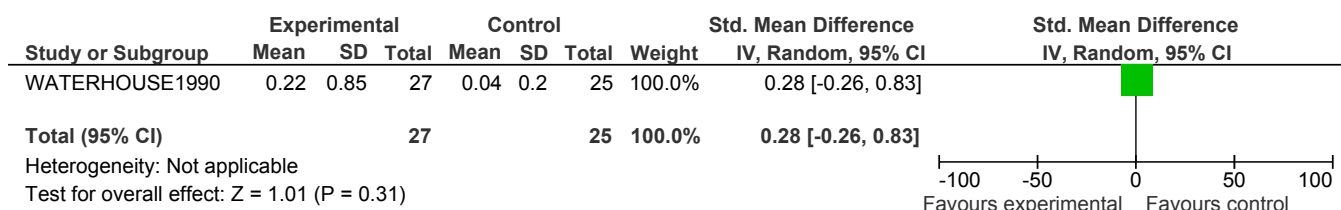
11 General hospital admission versus discharge

11.1 Repetition at 4 months



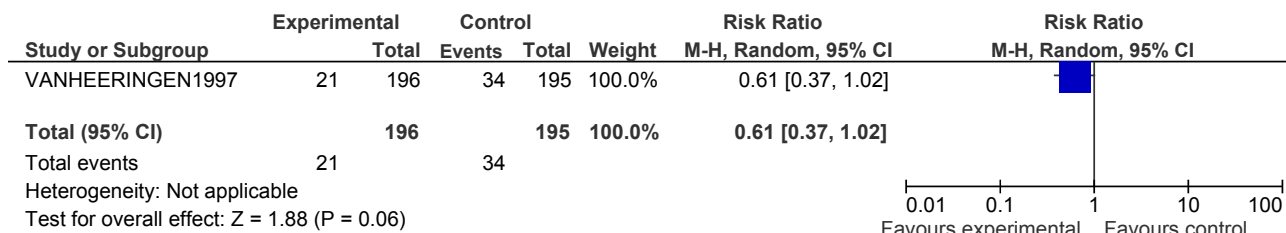
Appendix 16a- Psychological interventions forest plots

11.2 Suicide ideation at 4 months

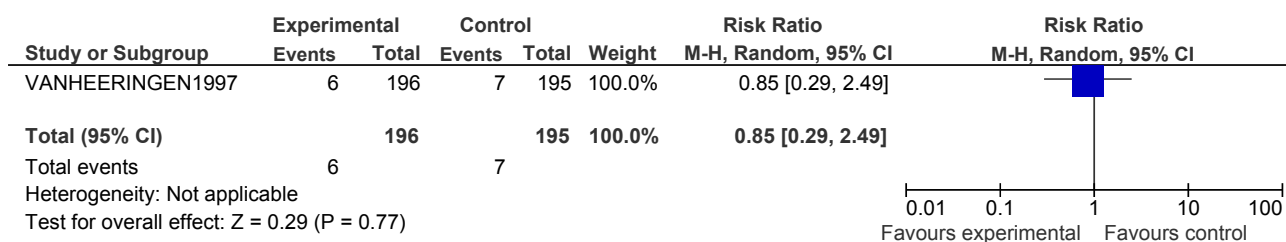


12 Compliance enhancement versus treatment as usual

12.1 Repetition at 12 months

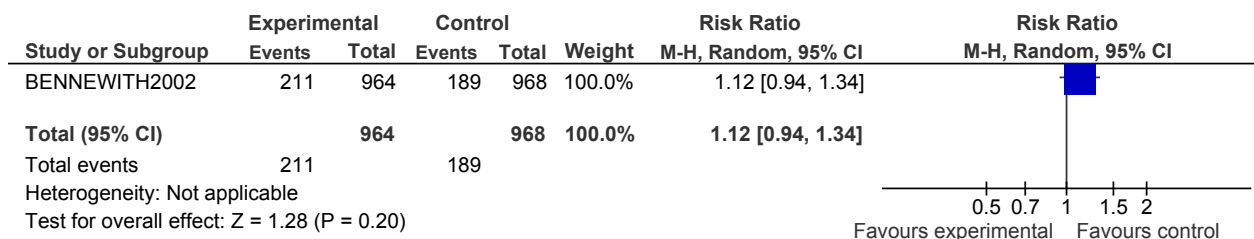


12.2 Suicides



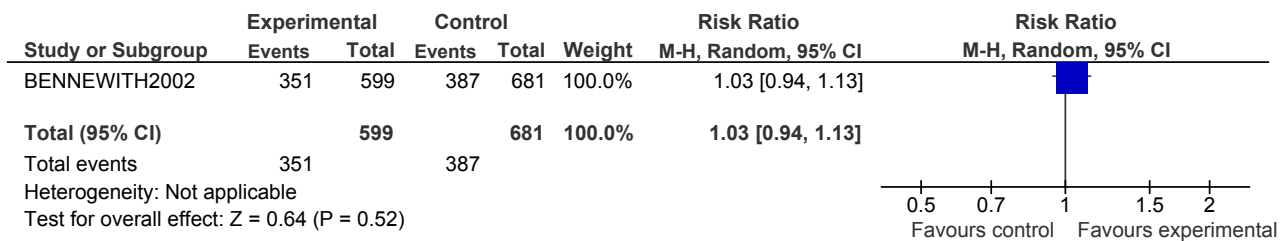
13 GP letter to patient/enhanced care versus treatment as usual

13.1 Repetition during first 12 months



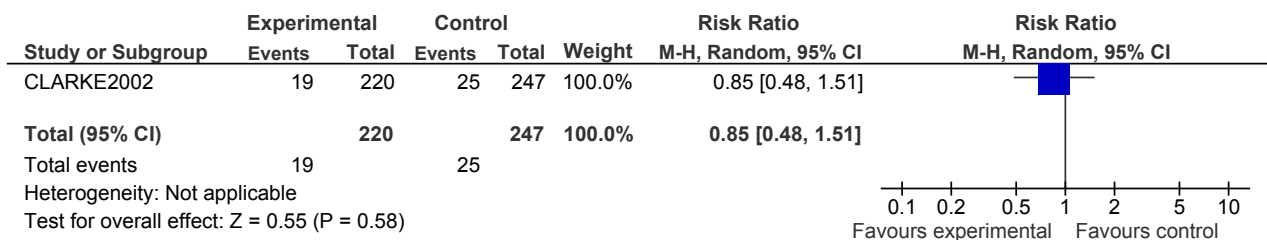
Appendix 16a- Psychological interventions forest plots

13.2 Contact with services during first 6 weeks

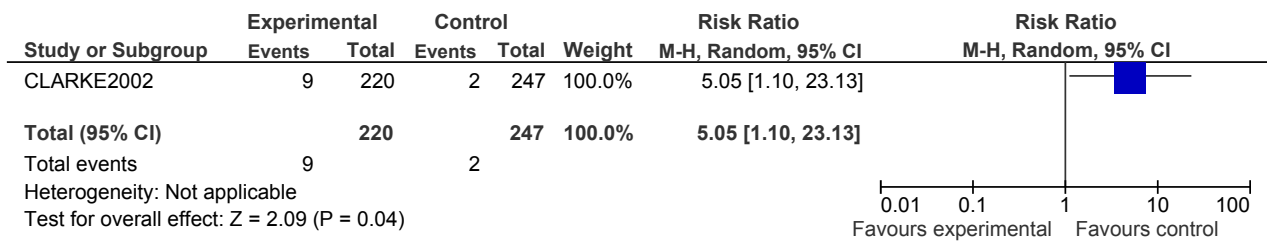


14 Case management versus treatment as usual

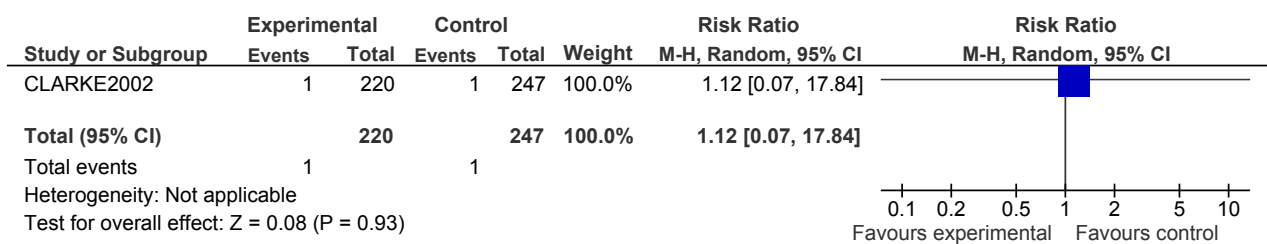
14.1 Readmission for repetition



14.2 Multiple readmission for repetition



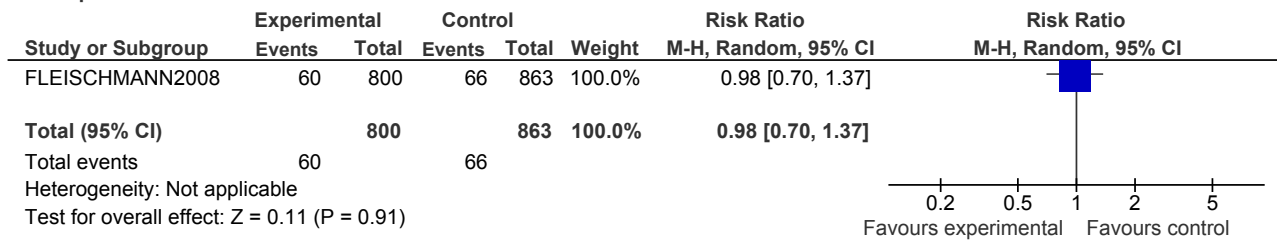
14.3 Suicides at 36 months follow-up



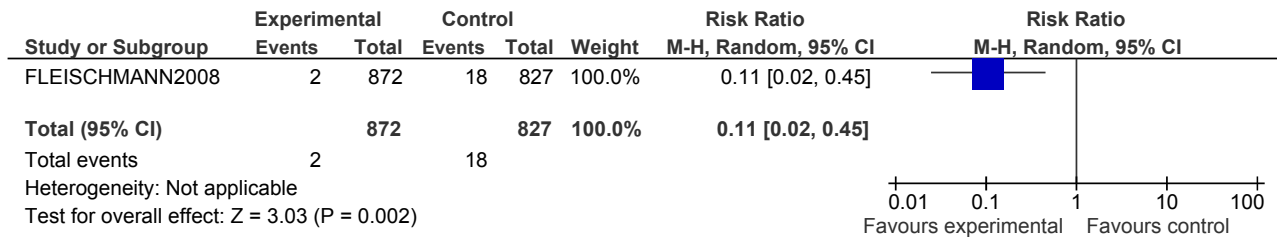
Appendix 16a- Psychological interventions forest plots

15 Supportive contact versus treatment as usual

15.1 Repetition at 18 months

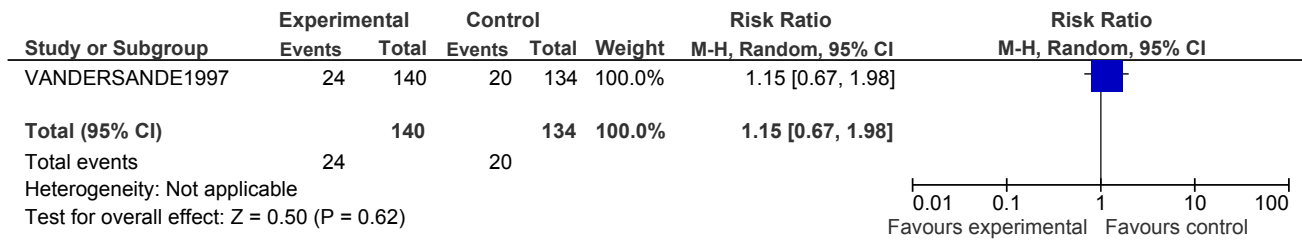


15.2 Suicides at 18 months

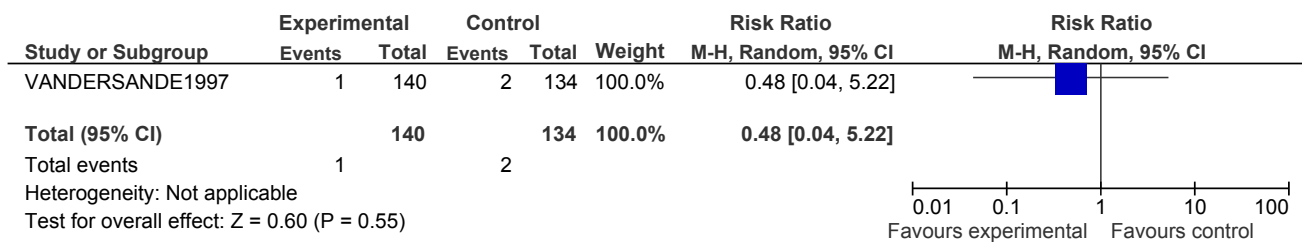


16 Intensive inpatient and community treatment versus treatment as usual

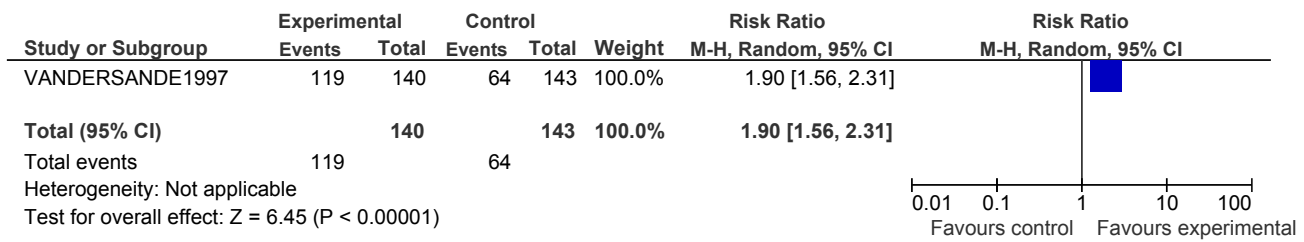
16.1 Per protocol repetition at last follow-up



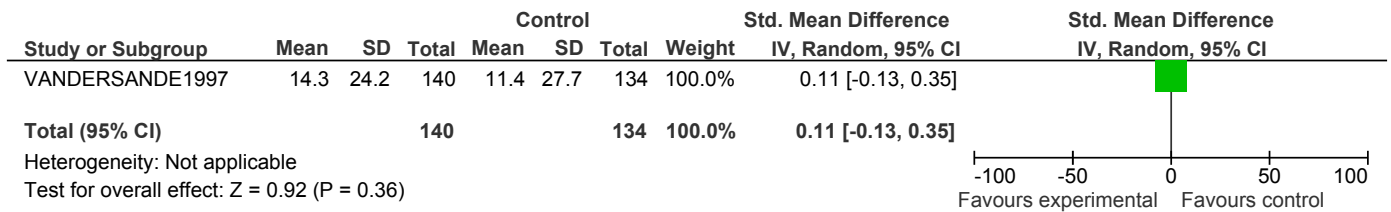
16.2 Suicides during follow-up



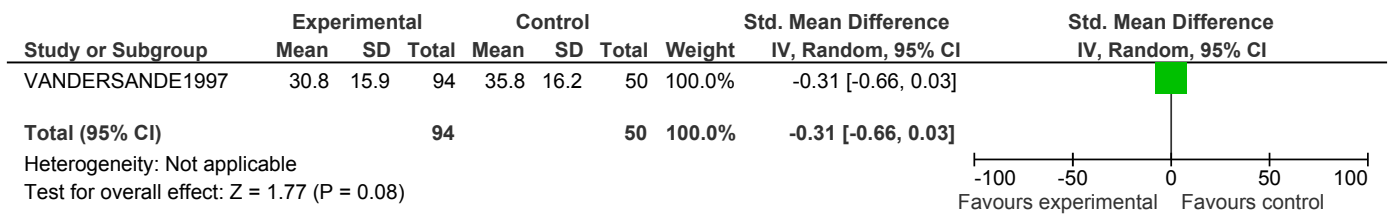
16.3 Attendance at treatment at 12 months



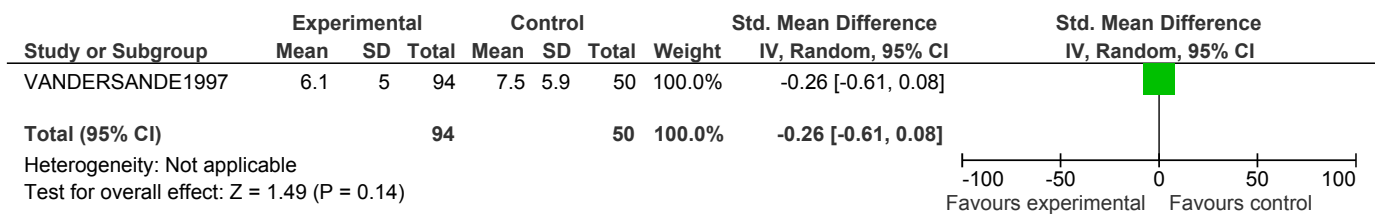
16.4 Attendance



16.5 Depression

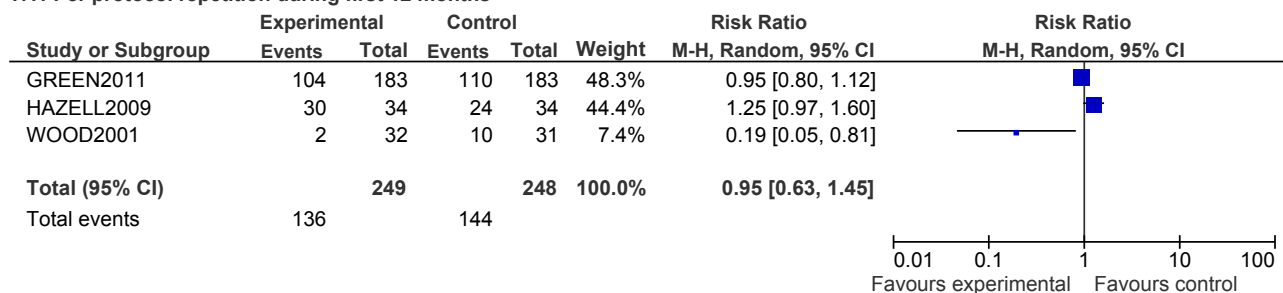


16.6 Hopelessness

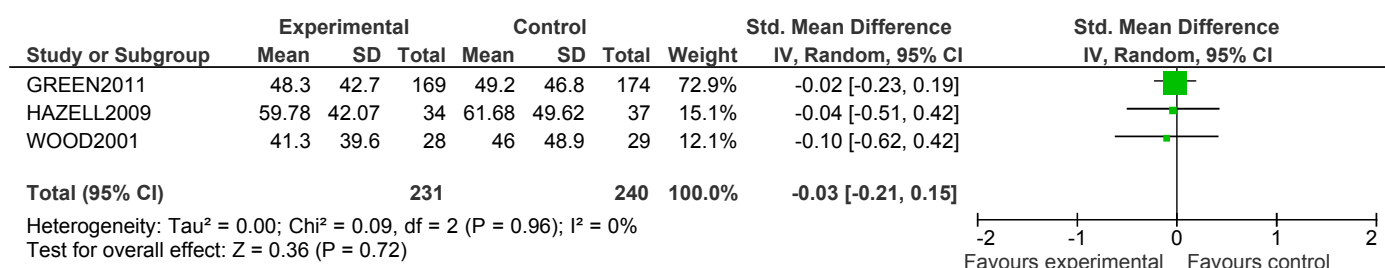


17 Group psychotherapy versus treatment as usual for young people

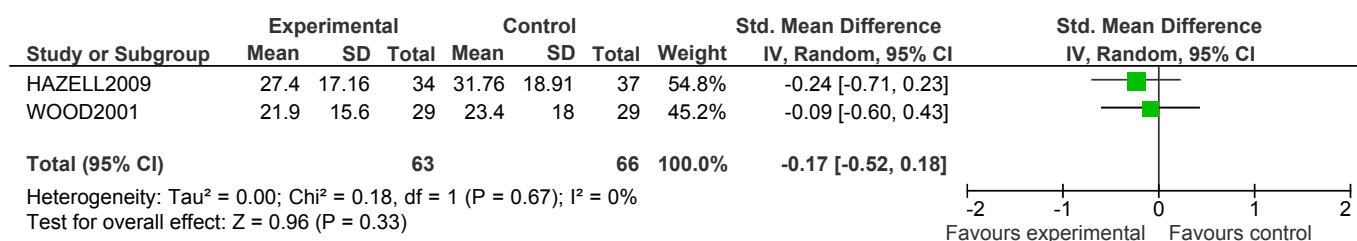
17.1 Per protocol repetition during first 12 months



17.2 Per protocol suicidal ideation at last follow-up

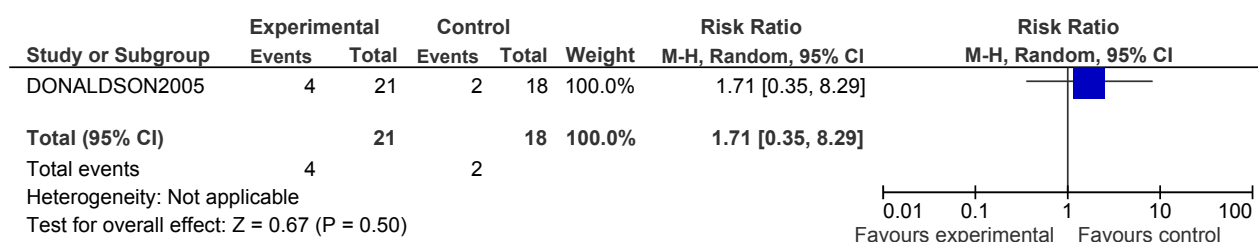


17.3 Per protocol depression at last follow-up



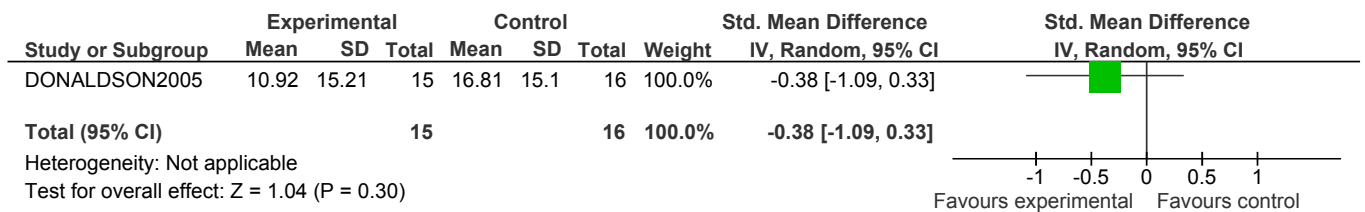
18 CBT versus treatment as usual for young people

18.1 Repetition at 6 months after trial entry

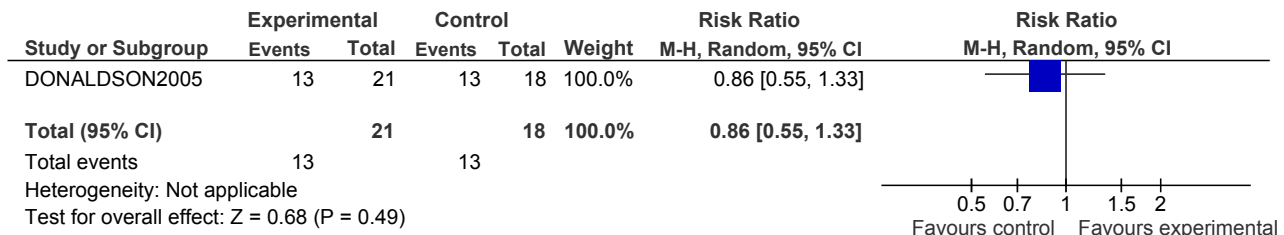


Appendix 16a- Psychological interventions forest plots

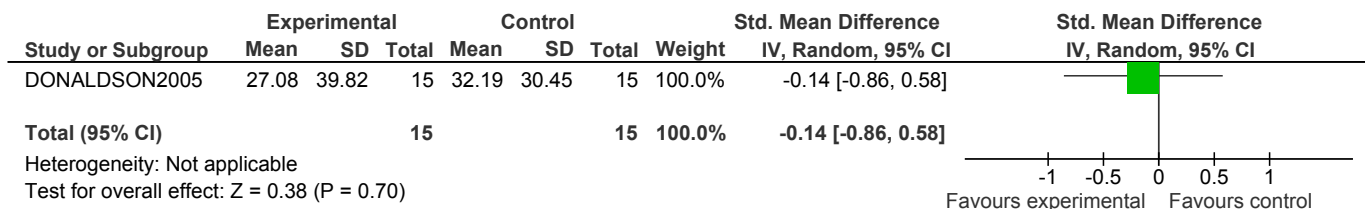
18.2 Depression at 6 months after trial entry



18.3 Adherence-treatment completion

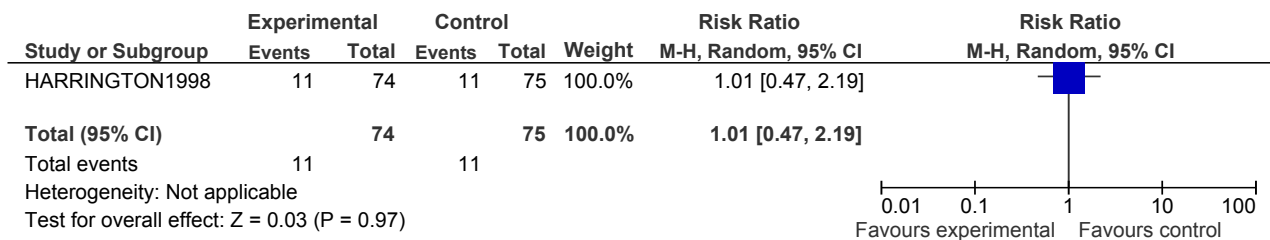


18.4 Suicidal ideation at 6 months after trial entry



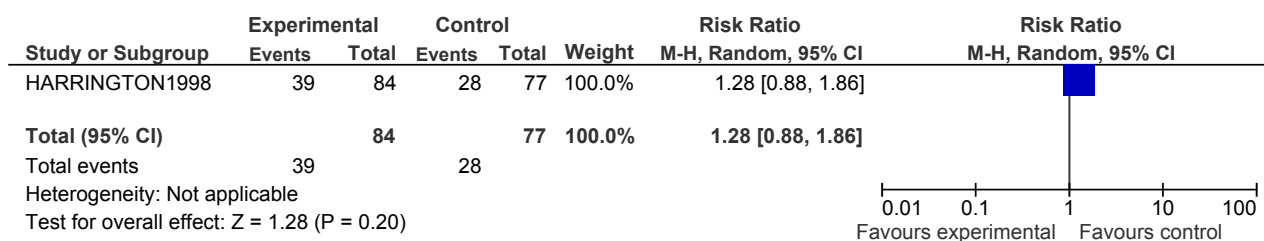
19 Home-based family intervention versus treatment as usual for young people

19.1 Repetition in 6 months

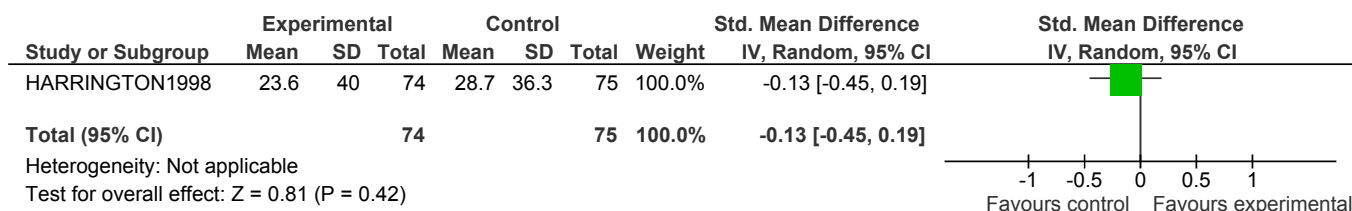


Appendix 16a- Psychological interventions forest plots

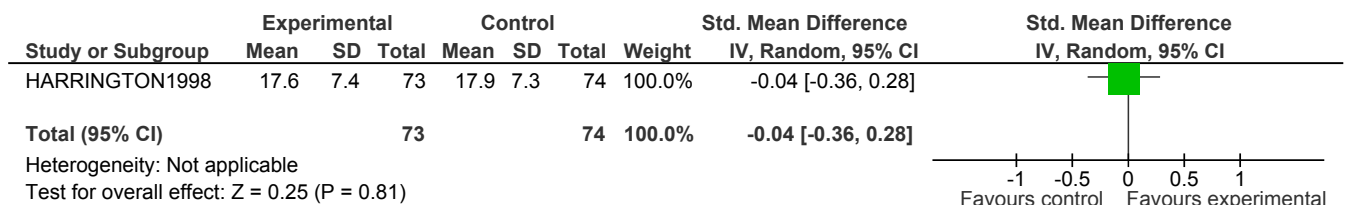
19.2 Attendance



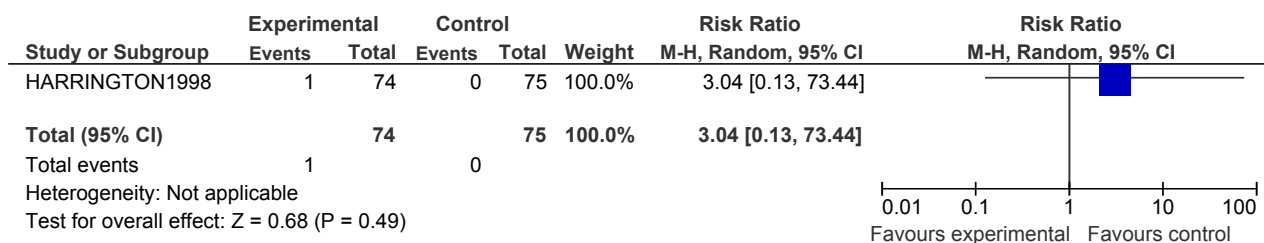
19.3 Suicide ideation at 6 months



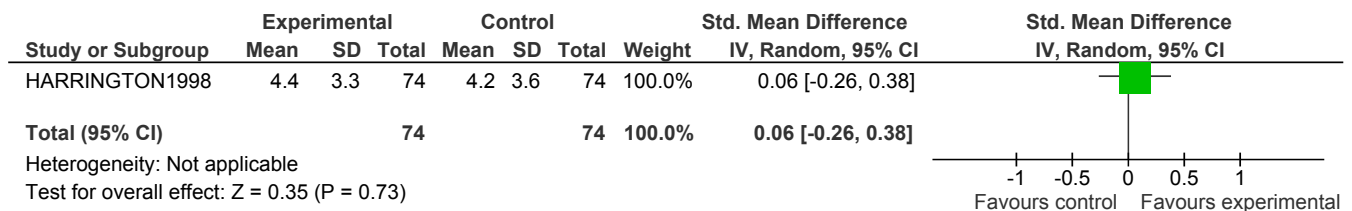
19.4 Problem-solving scores at 6 months



19.5 Suicide



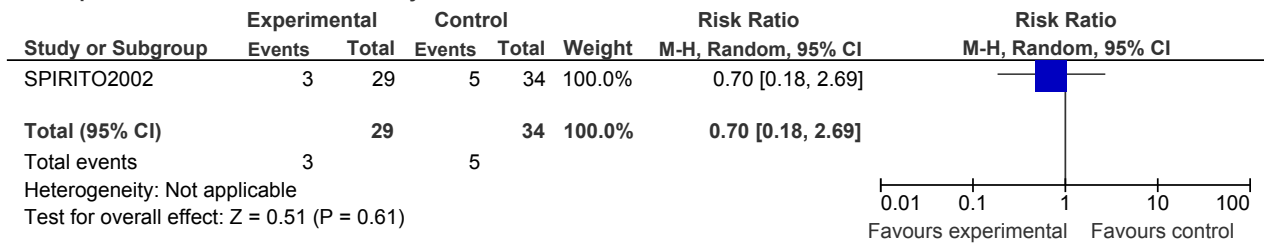
19.6 Hopelessness scores at 6 months



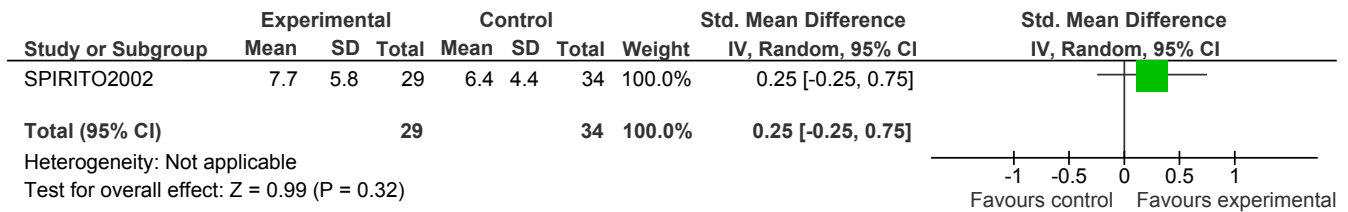
Appendix 16a- Psychological interventions forest plots

20 Standard disposition planning with and without added compliance enhancement for young people

20.1 Repetition at 3 months from trial entry



20.2 Number of treatment sessions



20.3 Attendance

