

APPENDIX 14B: CLINICAL EVIDENCE FOREST PLOTS: PSYCHOLOGICAL AND PSYCHOSOCIAL INTERVENTIONS

PSYCHOLOGICAL INTERVENTIONS IN CHILDREN AND YOUNG PEOPLE 25 YEARS AND YOUNGER.....	2
1. Cognitive behavioural therapy (CBT) versus treatment as usual (TAU): 26 weeks post-treatment	2
2. CBT versus treatment as usual (TAU): 52 weeks' follow-up	2
3. CBT versus EPPIC treatment as usual (TAU): 14 weeks post-treatment	3
4. CBT versus EPPIC treatment as usual (TAU): 52 weeks' follow-up.....	4
5. CBT versus EPPIC treatment as usual (TAU) in acutely suicidal participants: 10 weeks post-treatment	5
6. CBT versus EPPIC treatment as usual (TAU) in acutely suicidal participants: 36 weeks' follow-up.....	5
7. CBT + clozapine versus clozapine in participants whose symptoms have not adequately responded to treatment: 12 weeks post-treatment	6
8. CBT + clozapine versus clozapine in participants whose symptoms have not adequately responded to treatment: 24 weeks' follow-up.....	7
9. Individual CBT versus family CBT: 52 weeks post-randomisation	9
10. Individual and family CBT versus EPPIC treatment as usual (TAU): 30.33 weeks post-treatment	9
11. Any psychological intervention in addition to EPPIC treatment as usual (TAU) versus EPPIC treatment as usual (TAU): post-treatment	11

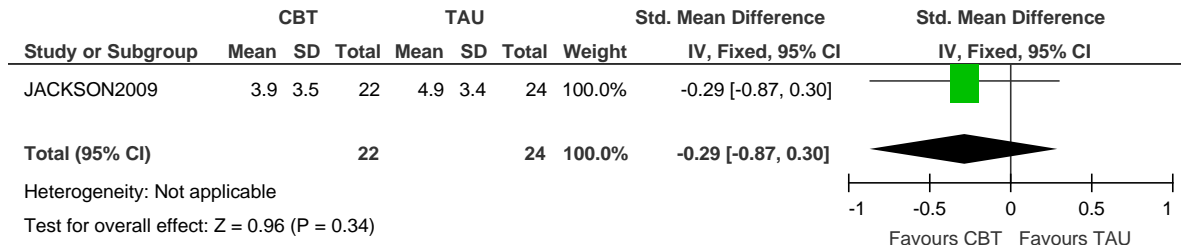
Abbreviations

BDI	Beck Depression Inventory
BPRS (-P)	Brief Psychiatric Rating Scale (- Psychotic Subscale)
CBT	cognitive behavioural therapy
CDSS	Calgary Depression Scale for Schizophrenia
CGI	Clinical Global Impression scale
CI	confidence interval
EPPIC	Early Psychosis Prevention and Intervention Centre, Australia
QLS	Quality of Life Scale
SANS	Scale for Assessment of Negative Symptoms
SD	standard deviation
SOFAS	Social and Occupational Functioning Assessment Scale
TAU	treatment as usual

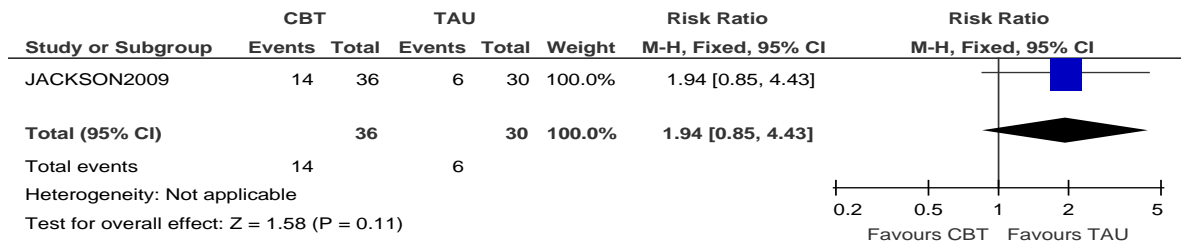
PSYCHOLOGICAL INTERVENTIONS IN CHILDREN AND YOUNG PEOPLE 25 YEARS AND YOUNGER

1. Cognitive behavioural therapy (CBT) versus treatment as usual (TAU): 26 weeks post-treatment

1.1 Mental state: depression (Calgary Depression Scale for Schizophrenia [CDSS])

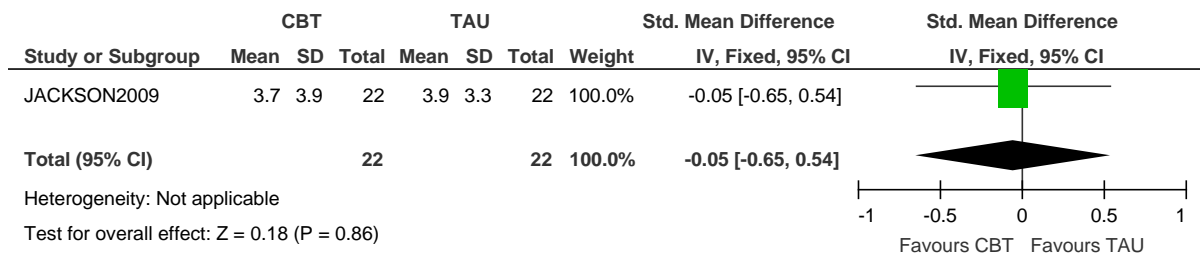


1.2 Leaving the study early for any reason

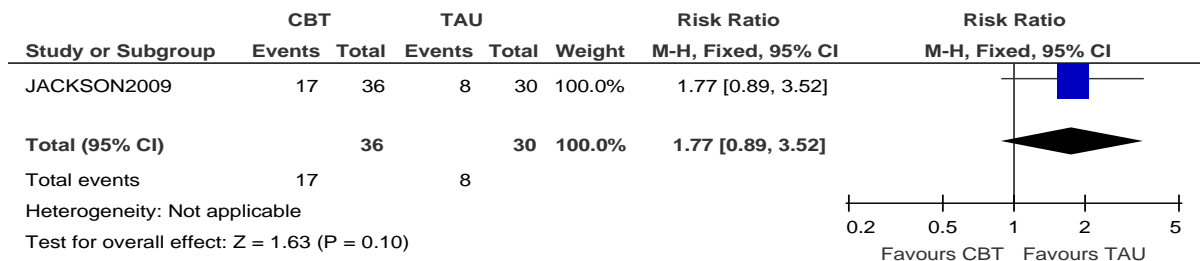


2. CBT versus treatment as usual (TAU): 52 weeks' follow-up

2.1 Mental state: depression (CDSS)

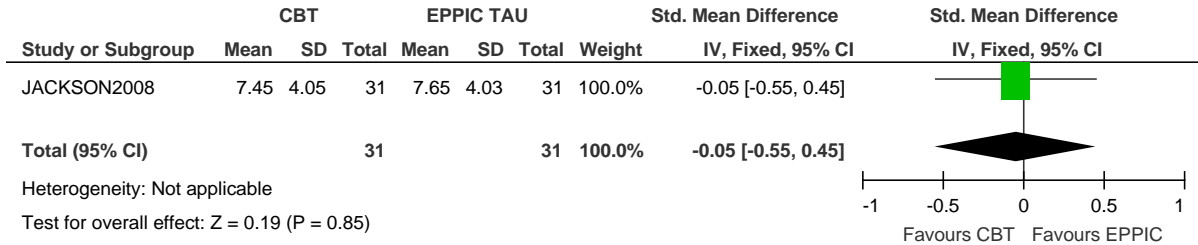


2.2 Leaving the study early for any reason

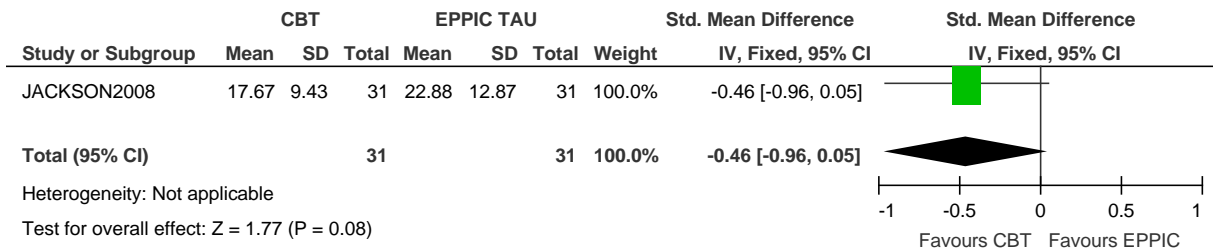


3. CBT versus EPPIC treatment as usual (TAU): 14 weeks post-treatment

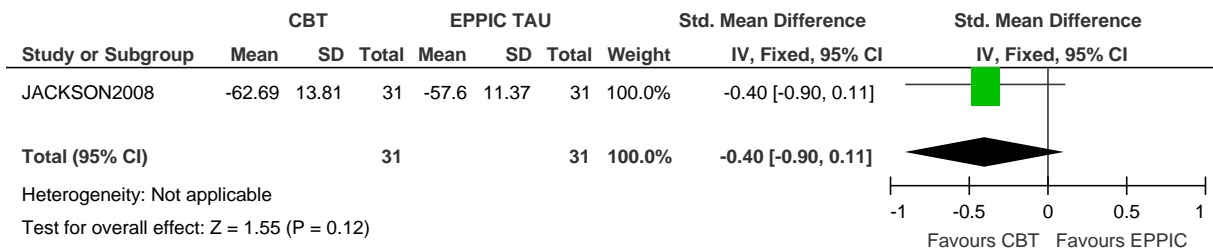
3.1 Mental state: positive symptoms (Brief Psychiatric Rating Scale Psychotic Subscale [BPRS-P])



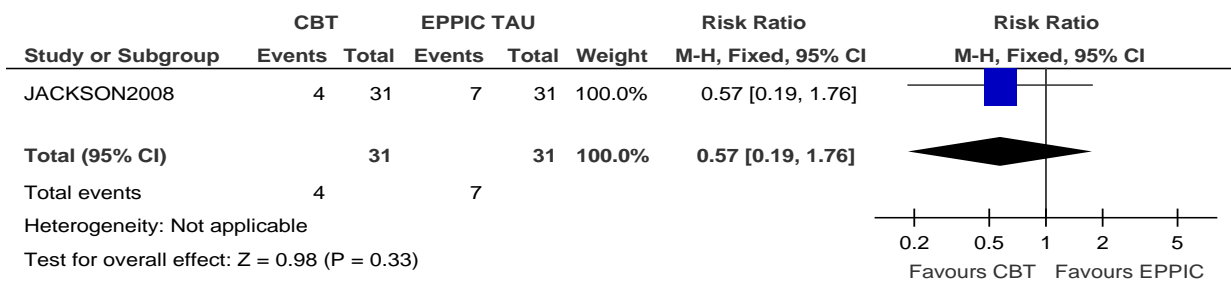
3.2 Mental state: negative symptoms (Scale for Assessment of Negative Symptoms [SANS])



3.3 Functioning: social (Social and Occupational Functioning Assessment Scale [SOFAS])

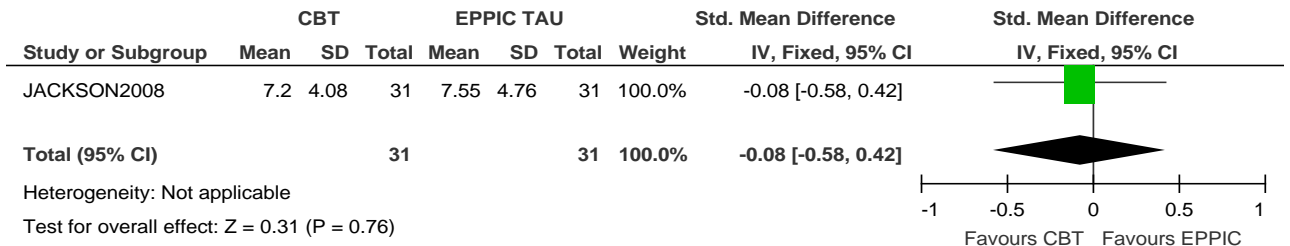


3.4 Leaving the study early for any reason

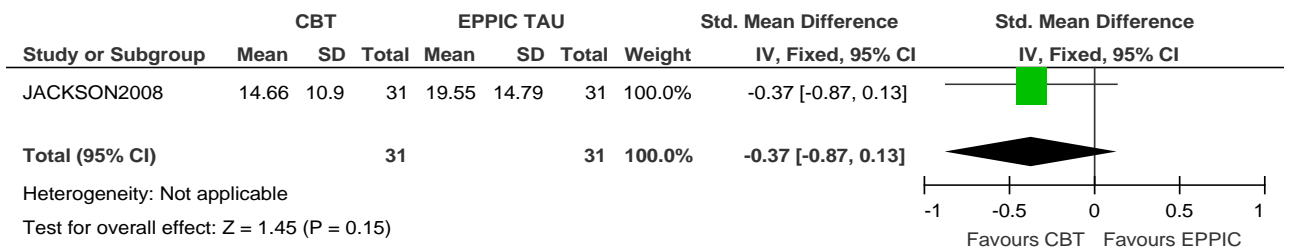


4. CBT versus EPPIC treatment as usual (TAU): 52 weeks' follow-up

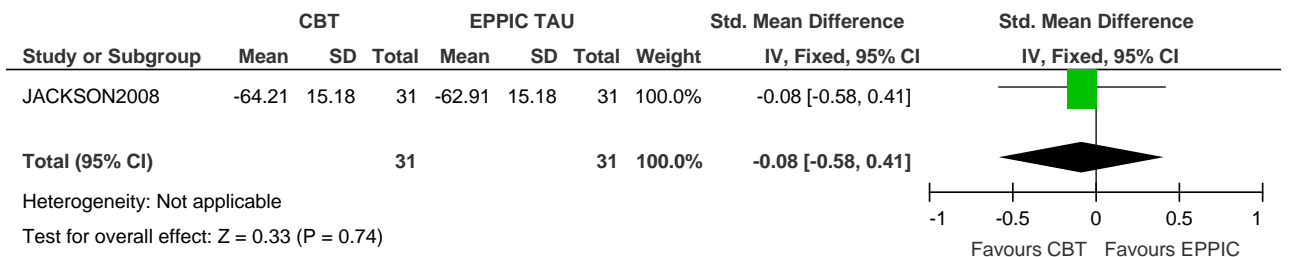
4.1 Mental state: positive symptoms (BPRS-P)



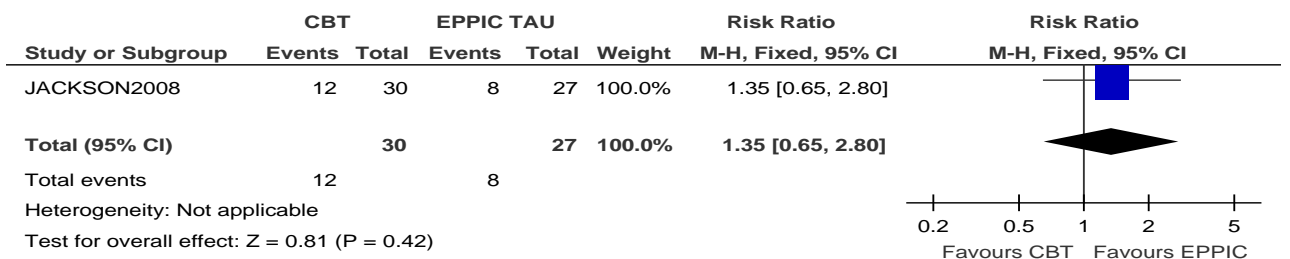
4.2 Mental state: negative symptoms (SANS)



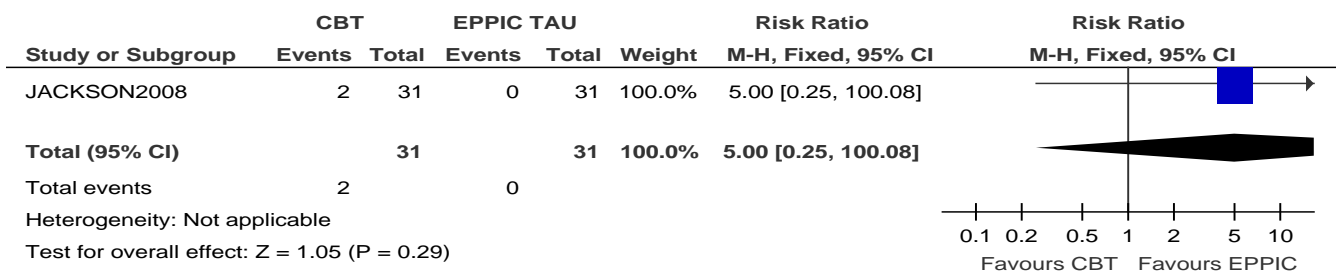
4.3 Functioning: social (SOFAS)



4.4 Relapse: number of participants hospitalised

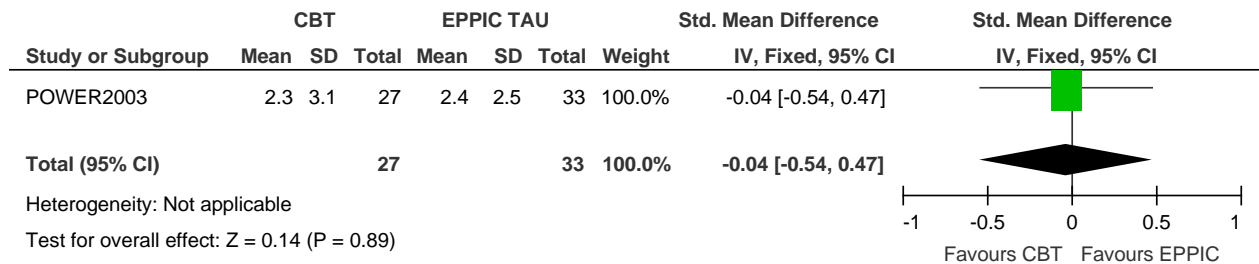


4.5 Mortality: number of deaths by suicide

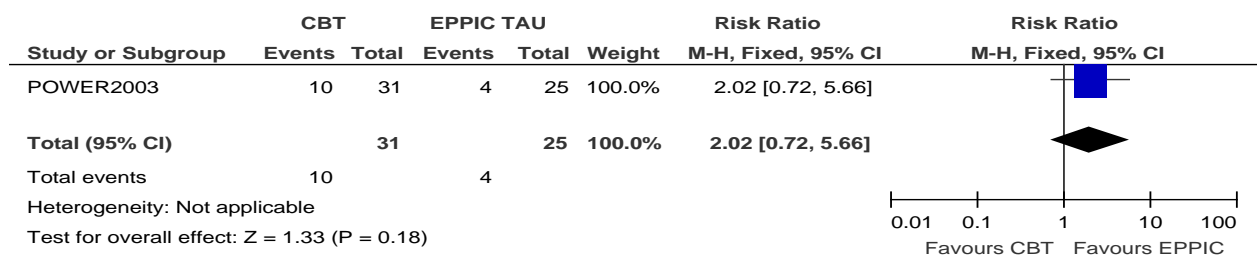


5. CBT versus EPPIC treatment as usual (TAU) in acutely suicidal participants: 10 weeks post-treatment

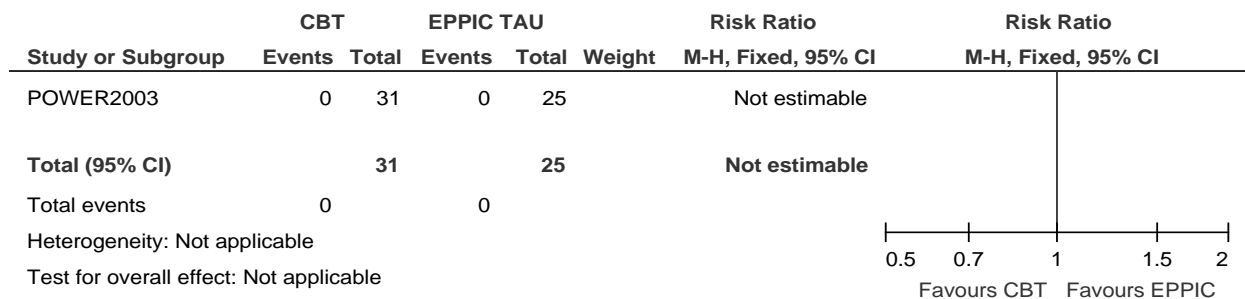
5.1 Quality of life (Quality of Life Scale [QLS])



5.2 Leaving the study early for any reason

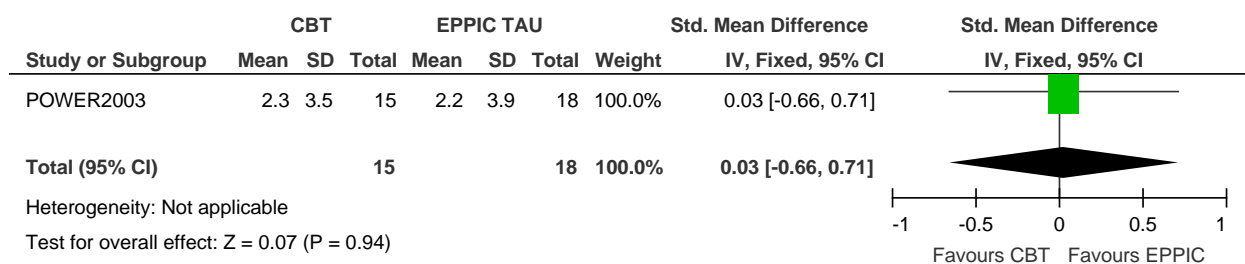


5.3 Mortality: number of deaths by suicide (assuming dropout did not die by suicide)

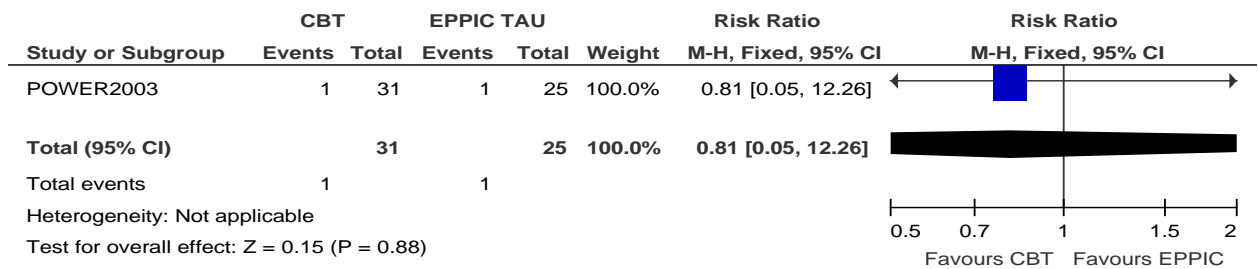


6. CBT versus EPPIC treatment as usual (TAU) in acutely suicidal participants: 36 weeks' follow-up

6.1 Quality of life (QLS)

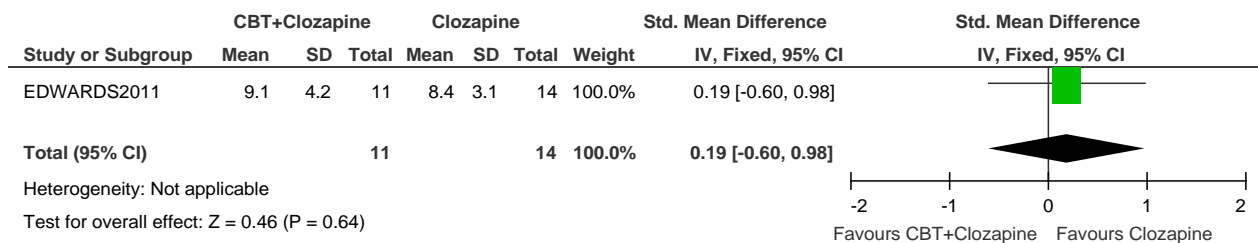


6.2 Mortality: number of deaths by suicide (assuming dropouts did not die by suicide)

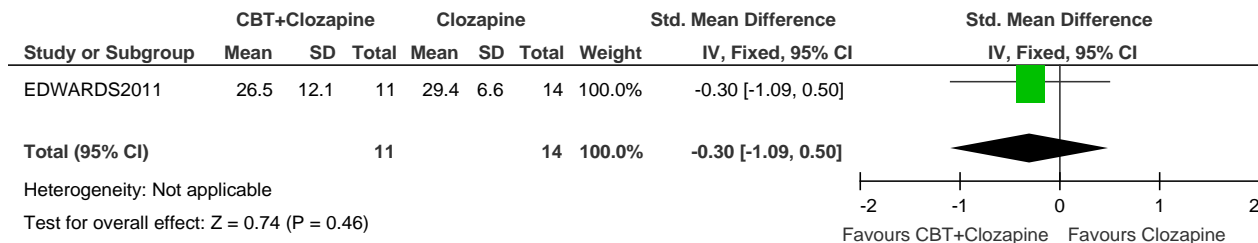


7. CBT + clozapine versus clozapine in participants whose symptoms have not adequately responded to treatment: 12 weeks post-treatment

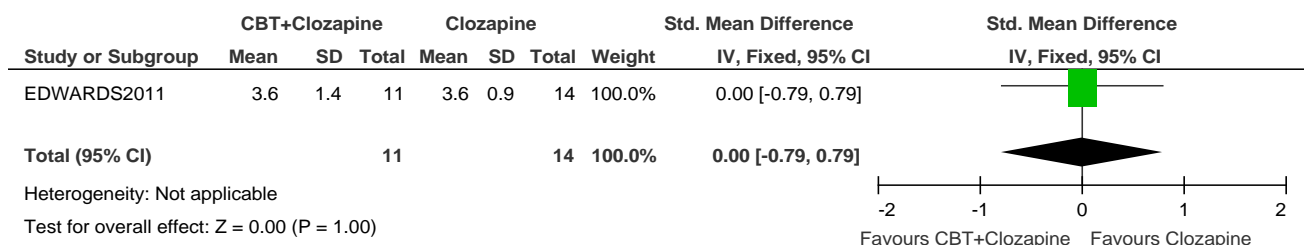
7.1 Mental state: positive symptoms (BPRS-P)



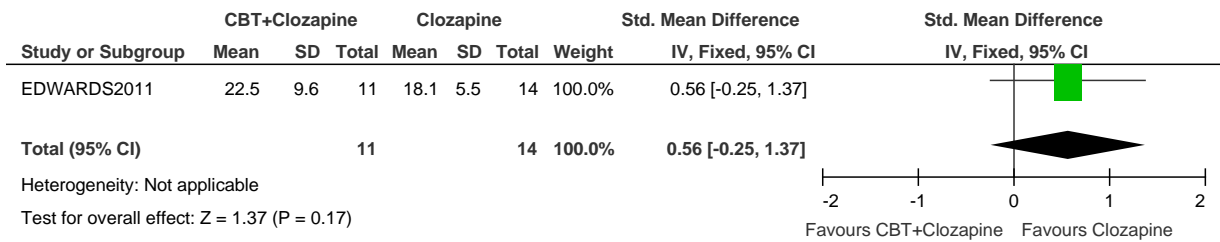
7.2 Mental state: negative symptoms (SANS)



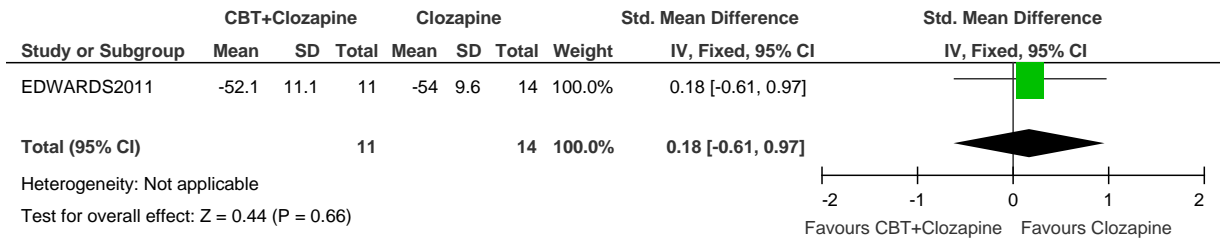
7.3 Global state (Clinical Global Impression [CGI] scale)



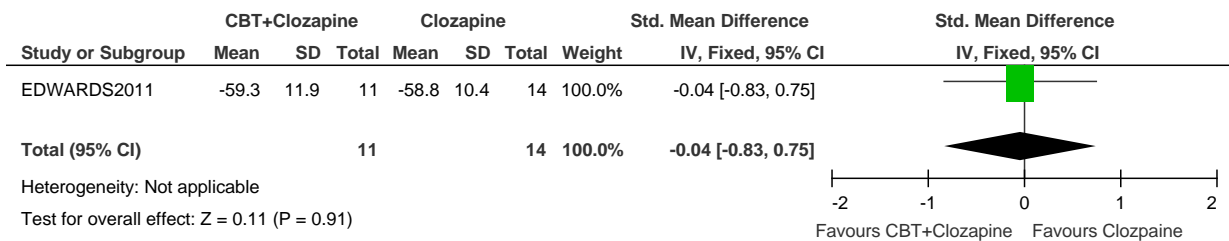
7.4 Mental state: depression symptoms (Beck Depression Inventory [BDI])



7.5 Functioning: social (SOFAS)

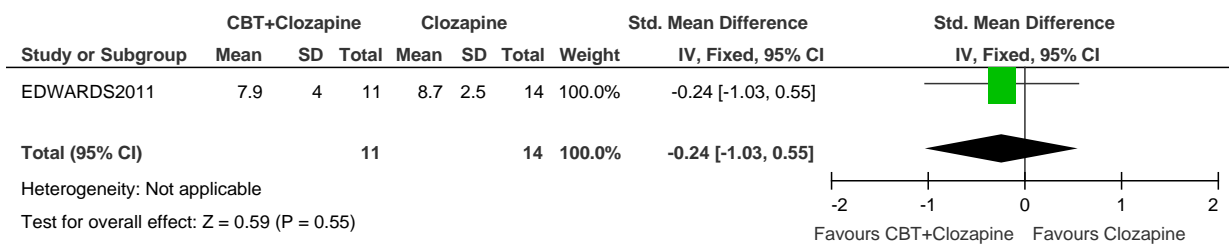


7.6 Quality of life (QLS)

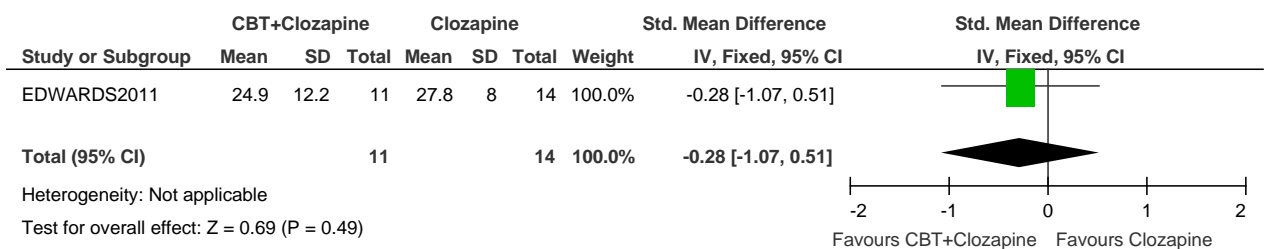


8. CBT + clozapine versus clozapine in participants whose symptoms have not adequately responded to treatment: 24 weeks' follow-up

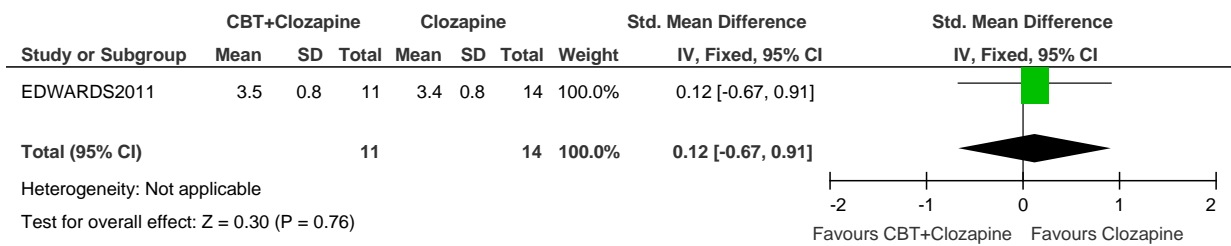
8.1 Mental state: positive symptoms (BPRS-P)



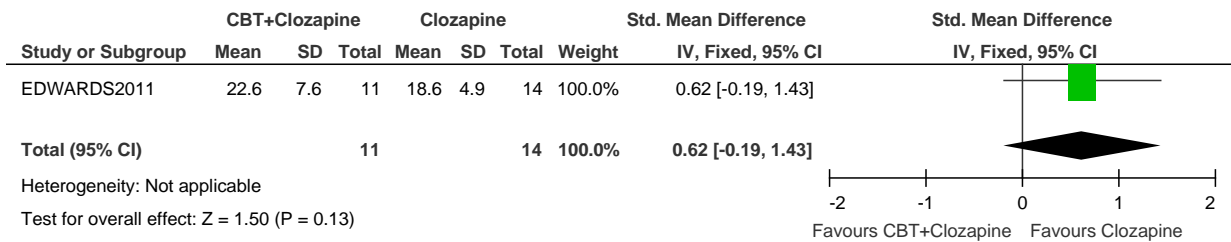
8.2 Mental state: negative symptoms (SANS)



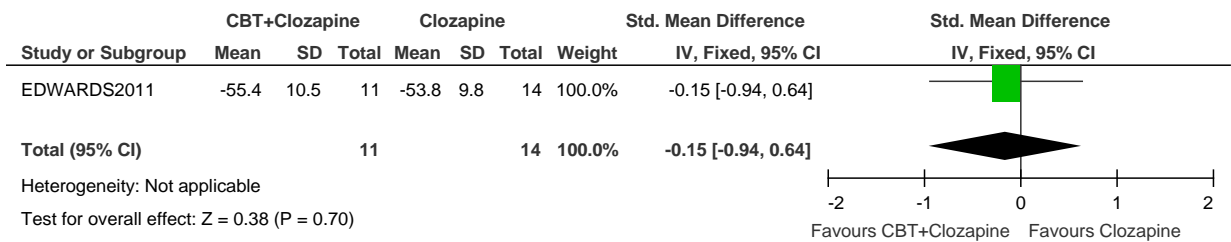
8.3 Global state (CGI)



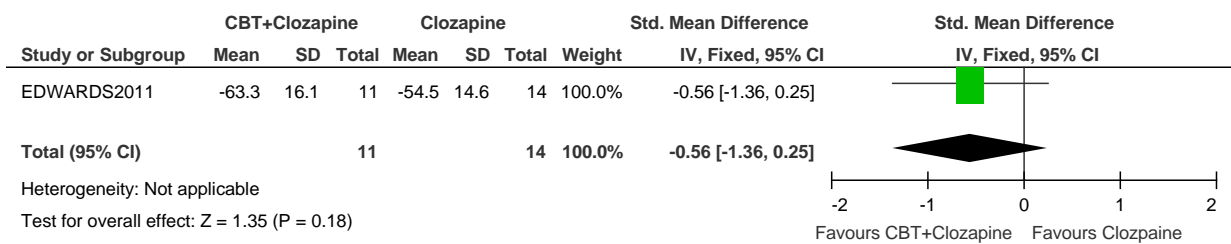
8.4 Mental state: depression symptoms (BDI)



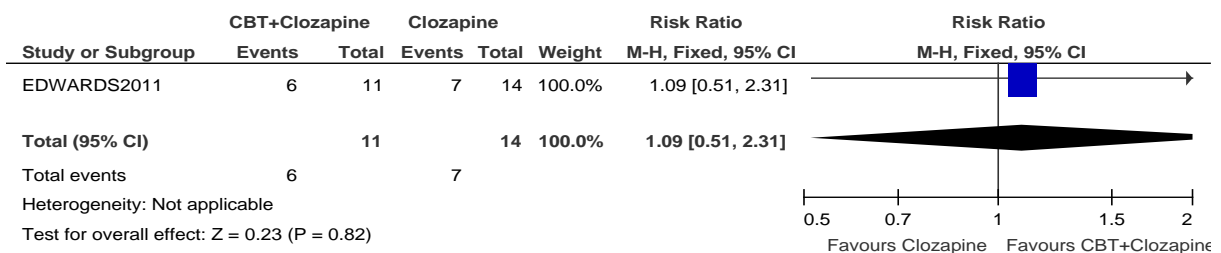
8.5 Functioning: social (SOFAS)



8.6 Quality of life (QLS)

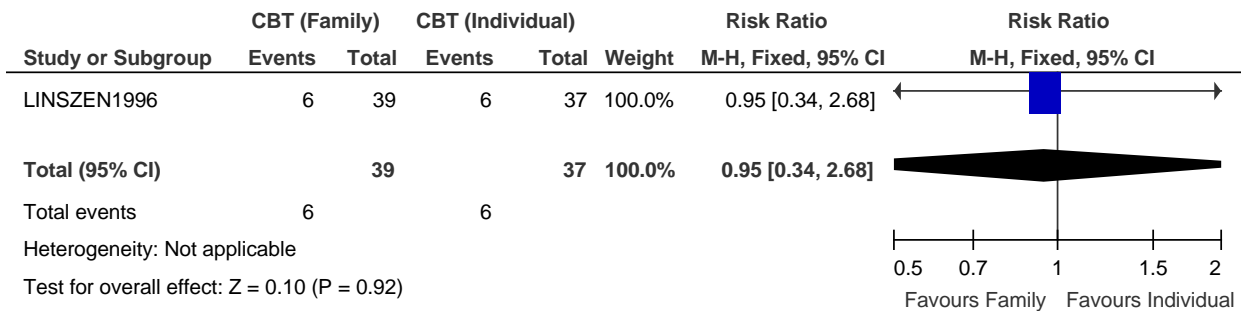


8.7 Remission (score of 'mild' or less on each of the three items of the BPRS-P and a CGI severity item rating of 'mild' or less; assuming dropouts did not achieve remission)



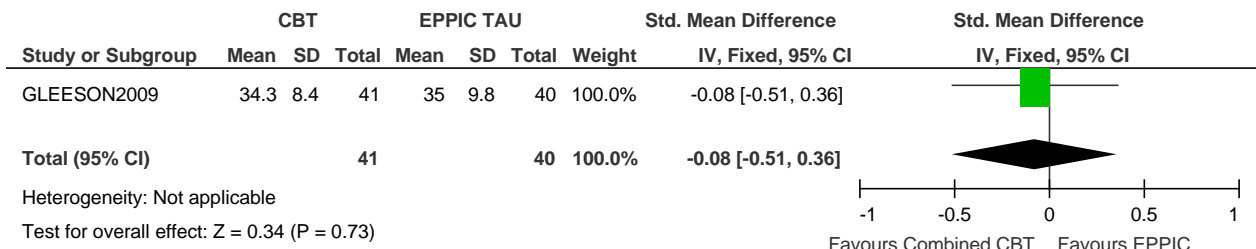
9. Individual CBT versus family CBT: 52 weeks post-treatment

9.1 Relapse: number of participants (BPRS; assuming dropouts relapsed)

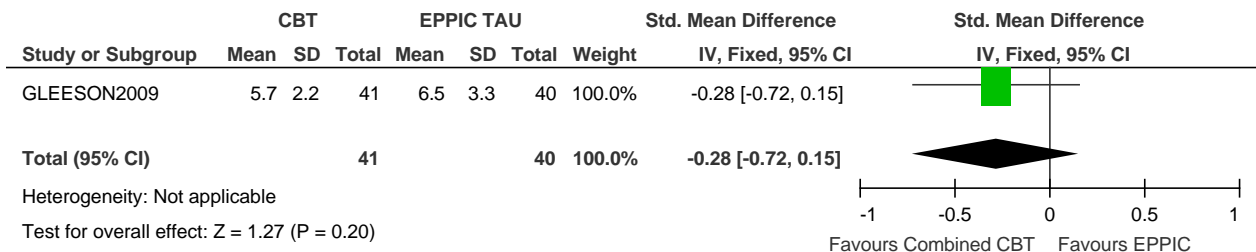


10. Individual and family CBT versus EPPIC treatment as usual (TAU): 30.33 weeks post-treatment

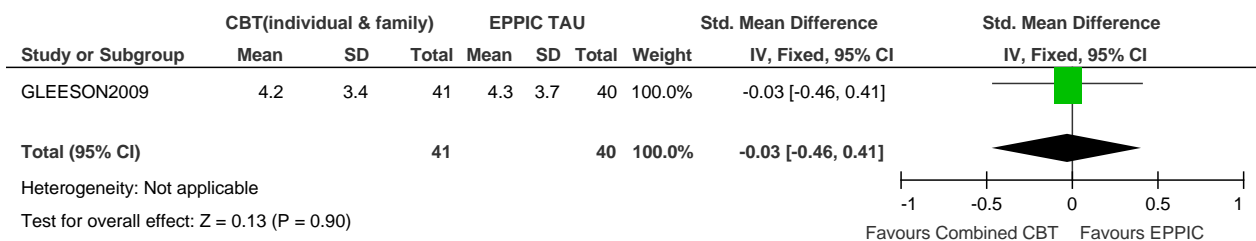
10.1 Mental state: total symptoms (BPRS)



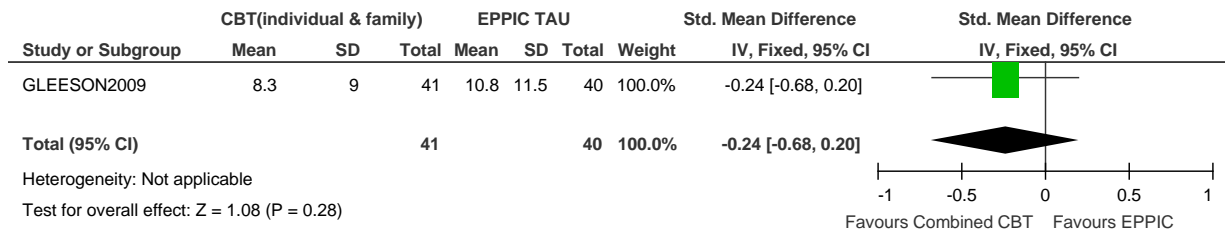
10.2 Mental state: positive symptoms (BPRS-P)



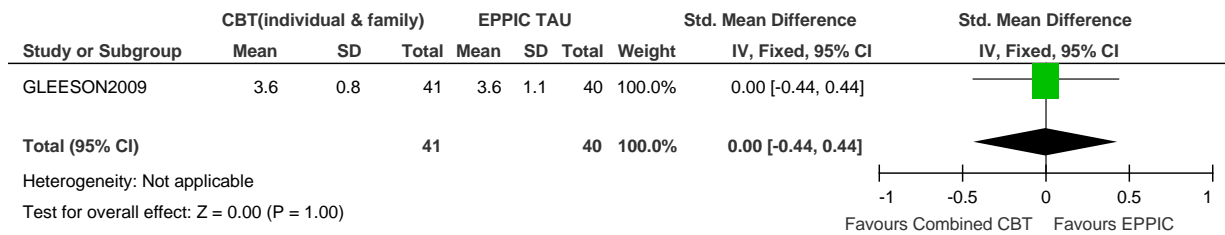
10.3 Mental state: negative symptoms (SANS)



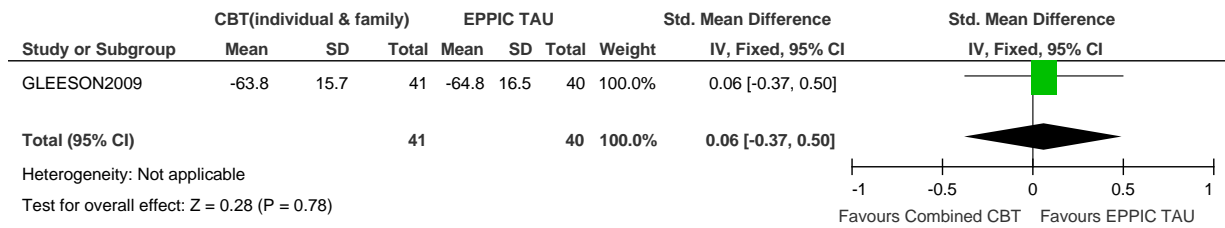
10.4 Mental state: depression symptoms (Montgomery-Åsberg Depression Rating Scale [MADRS])



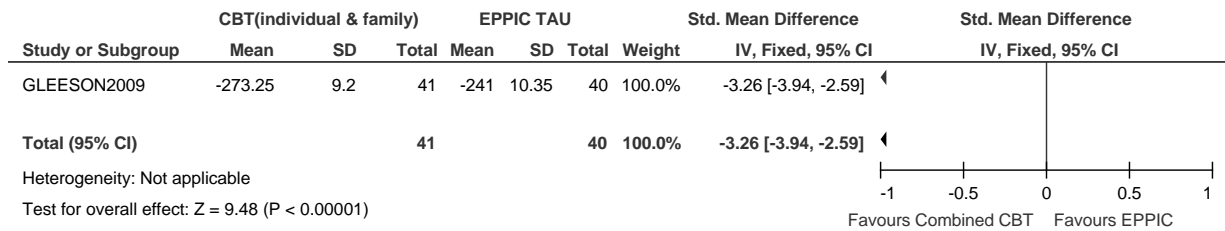
10.5 Quality of life (World Health Organization Quality of Life - abbreviated version)



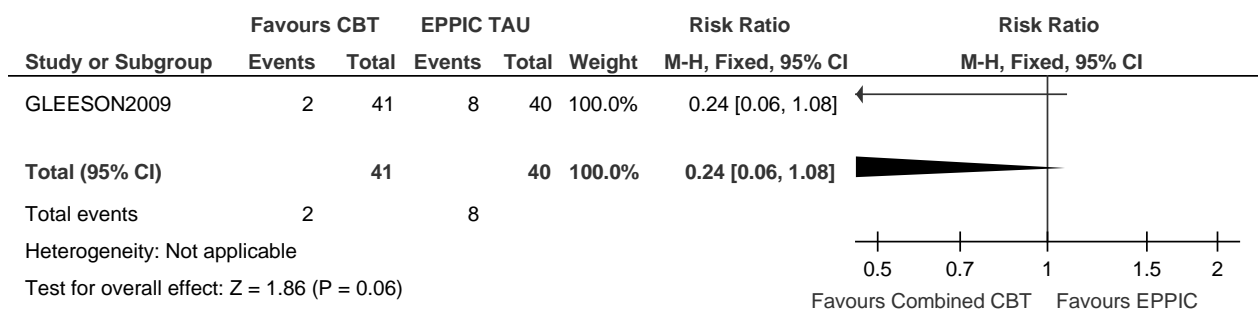
10.6 Functioning: social (SOFAS)



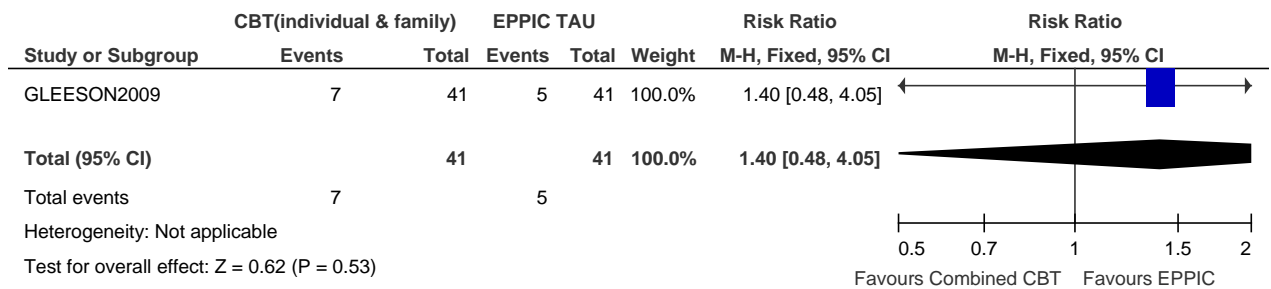
10.7 Relapse: time in days (BPRS)



10.8 Relapse: number of participants (BPRS; assuming dropouts relapsed)

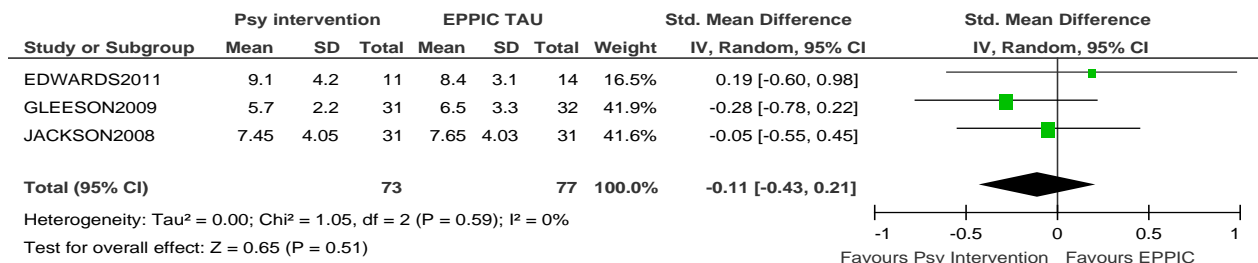


10.9 Leaving the study early for any reason

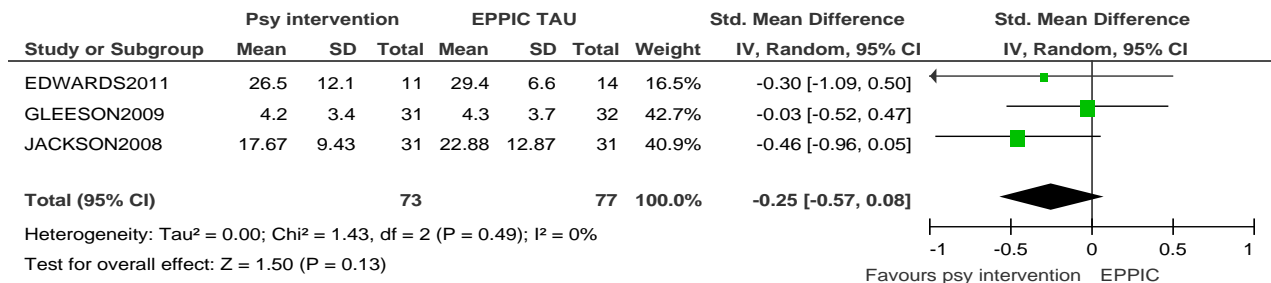


11. Any psychological intervention in addition to EPPIC treatment as usual (TAU) versus EPPIC treatment as usual (TAU): post-treatment

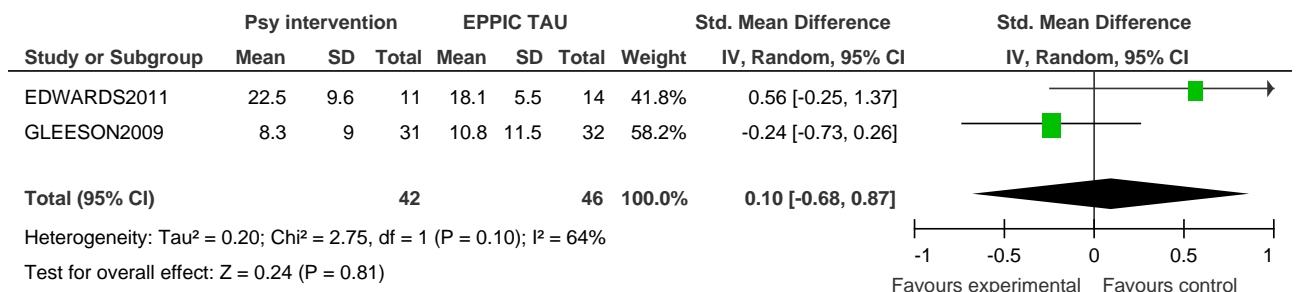
11.1 Mental state: positive symptoms



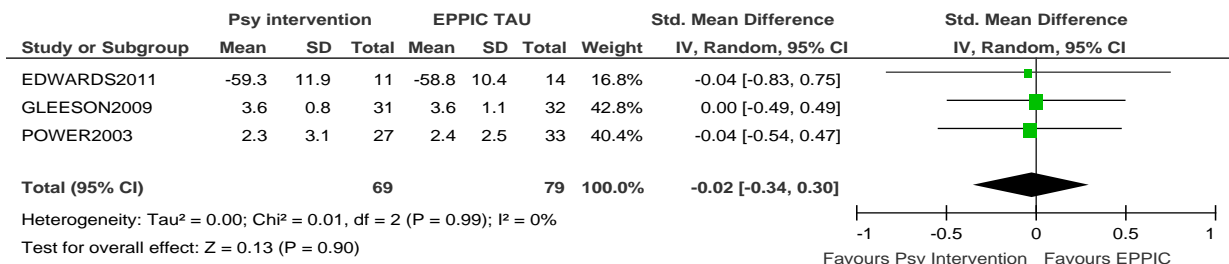
11.2 Mental state: negative symptoms



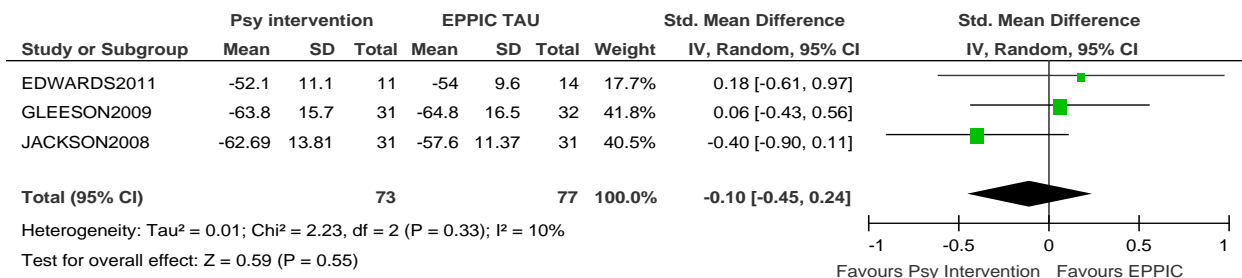
11.3 Mental state: depression symptoms



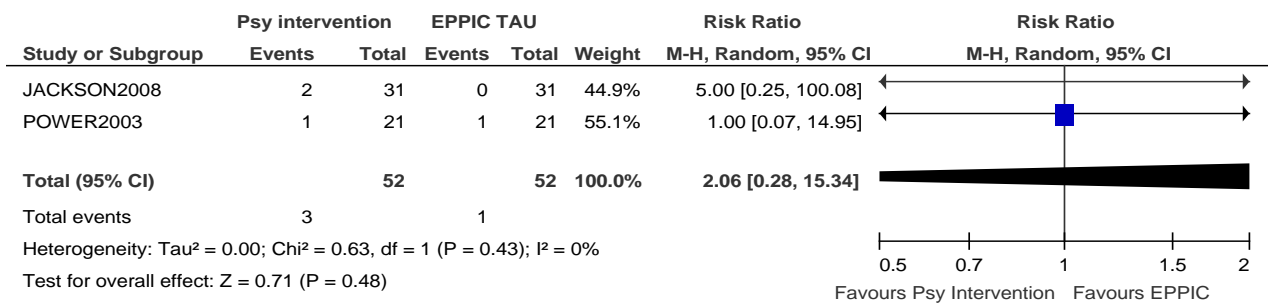
11.4 Quality of life



11.5 Functioning: social



11.6 Mortality: number of deaths by suicide (assuming dropouts did not die by suicide)



11.7 Leaving the study early for any reason

