

Appendix 23a: 2009 Early intervention clinical evidence forest plots¹

Table 1: Studies included in the early intervention services (EIS) review.....	2
Early intervention services versus standard care	3

¹ Each study included in this appendix is referred to by a study ID, with studies included in the previous guideline in lower case and new studies in upper case (primary author and date or study number for unpublished trials).

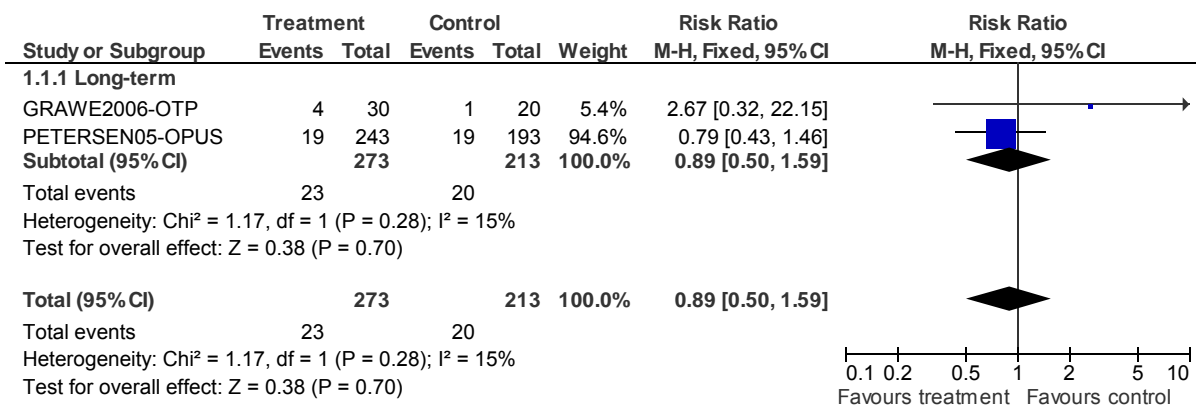
Table 1: Studies included in the early intervention services (EIS) review

Treatment	versus Comparator
	Standard care
EIS	CRAIG2004-LEO [78 weeks, N=144] GRAWE2006-OTP [104 weeks, N=50] KUIPERS2004-COAST [52 weeks, N=59] PETERSEN2005-OPUS [104 weeks, N=547]

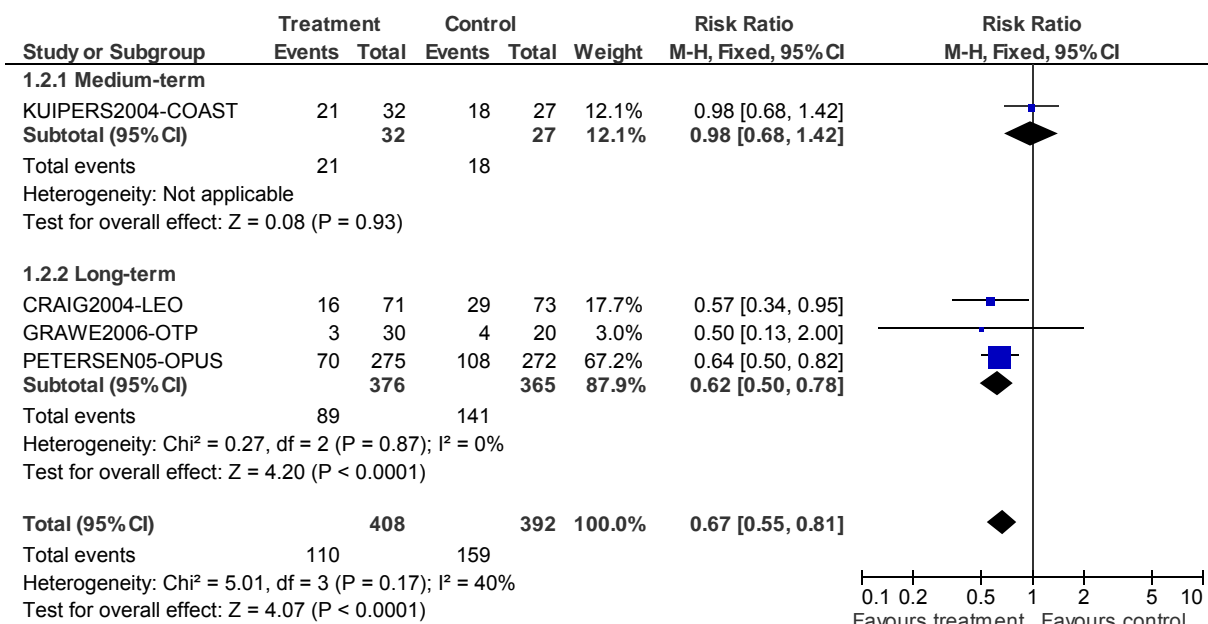
Access and engagement: Early intervention services

1 Early intervention services versus standard care

1.1 Suicide attempt

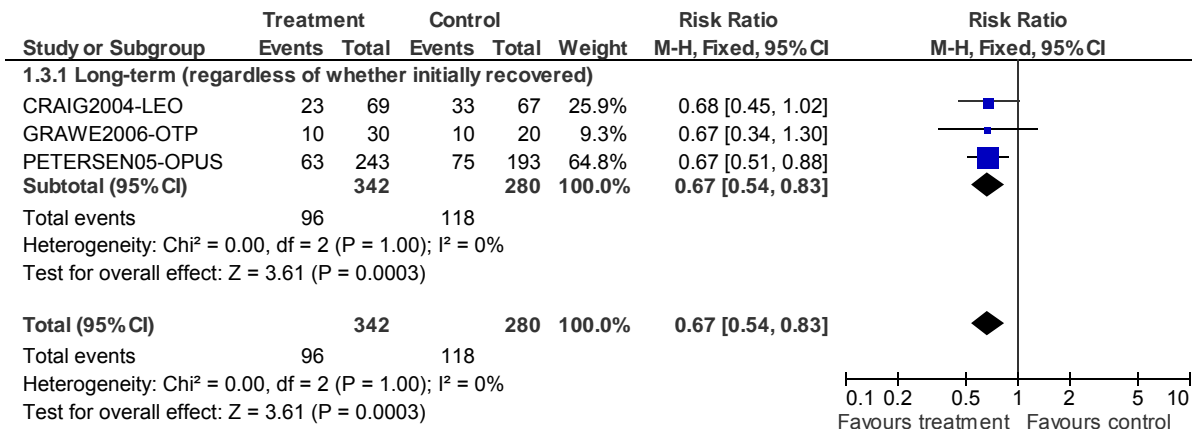


1.2 Leaving the study early: 1. Any reason

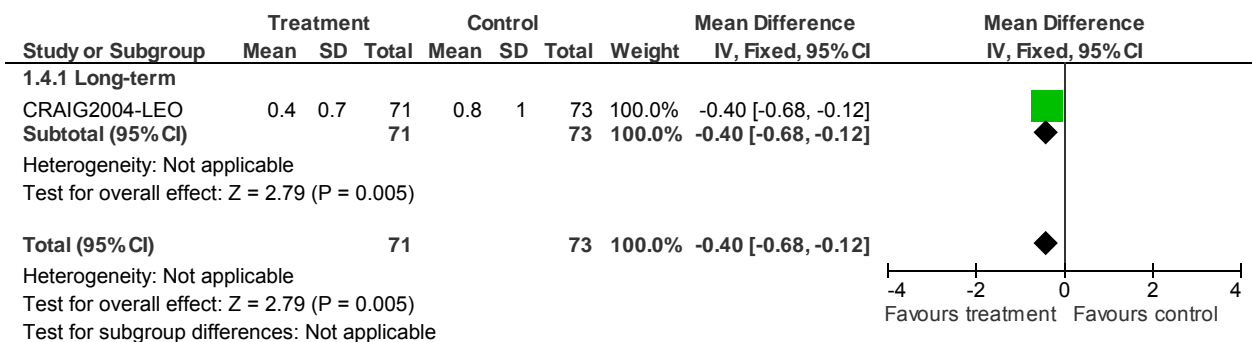


Access and engagement: Early intervention services

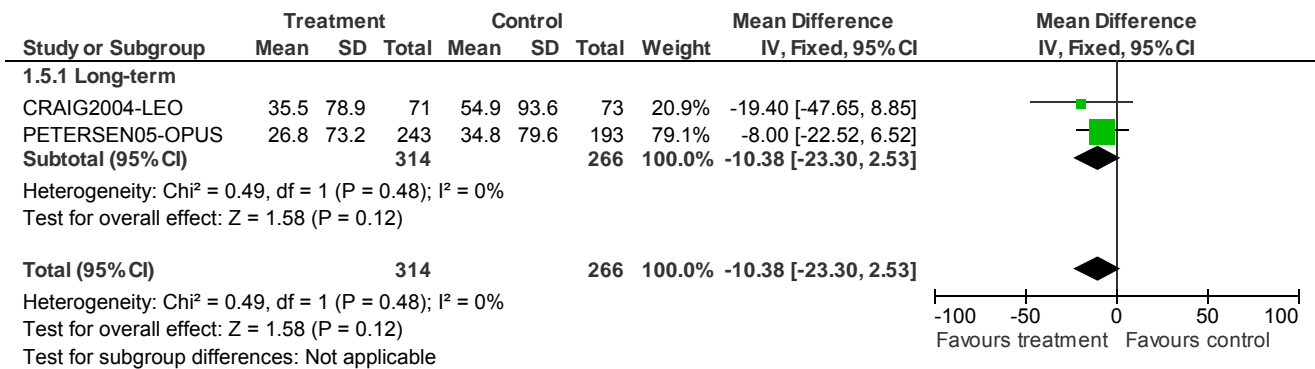
1.3 Service outcomes: 1. Hospital readmission



1.4 Service outcomes: 2. Mean number of readmissions

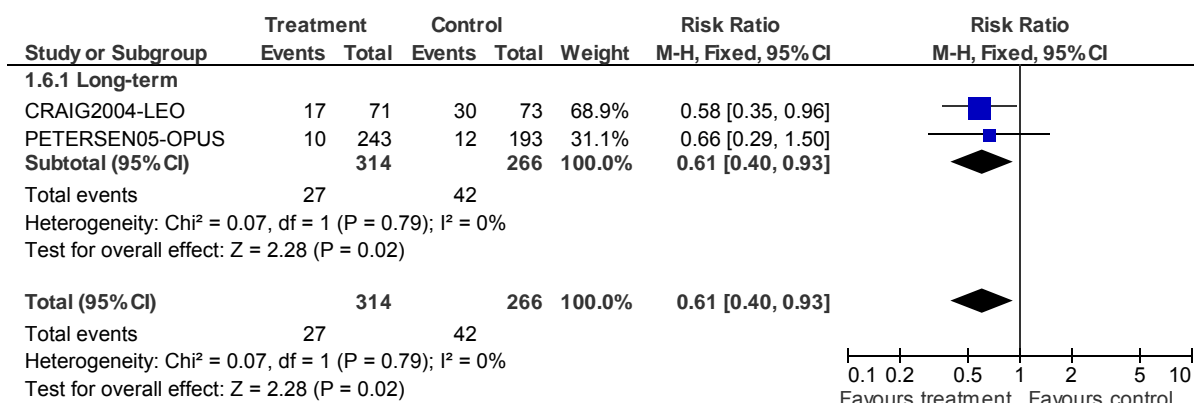


1.5 Service outcomes: 3. Mean number of bed days in follow up

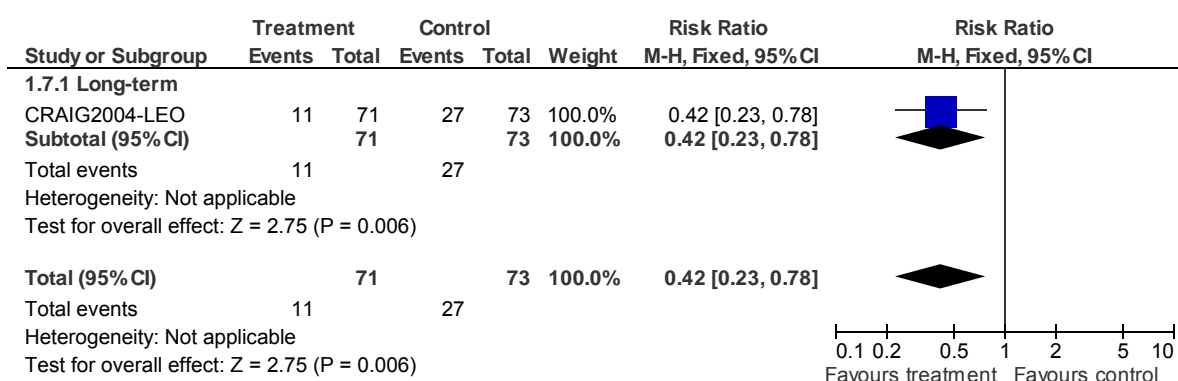


Access and engagement: Early intervention services

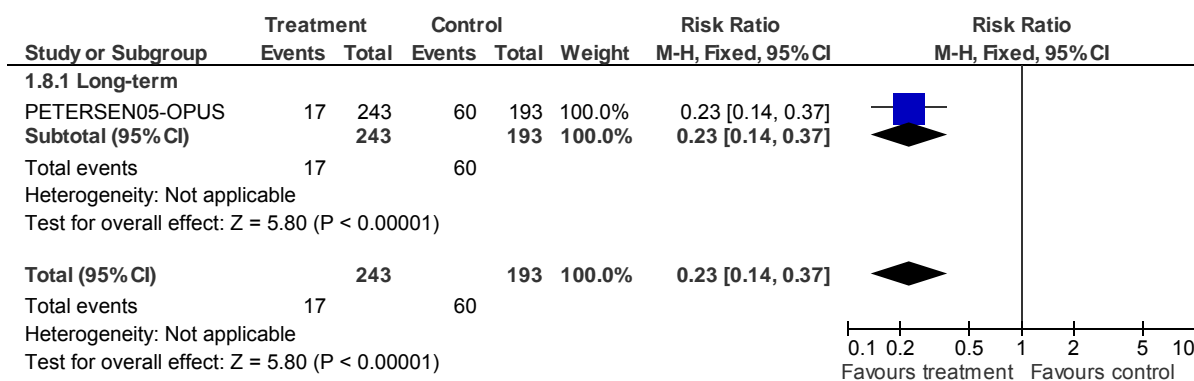
1.6 Service outcomes: 4. Not in contact with index team



1.7 Service outcomes: 5. Not in contact with any mental health service

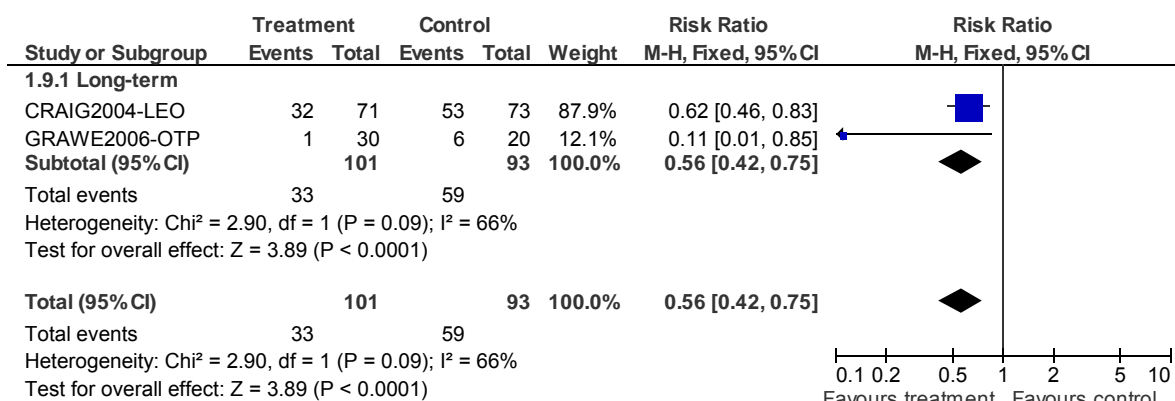


1.8 Service outcomes: 5. No outpatient visits

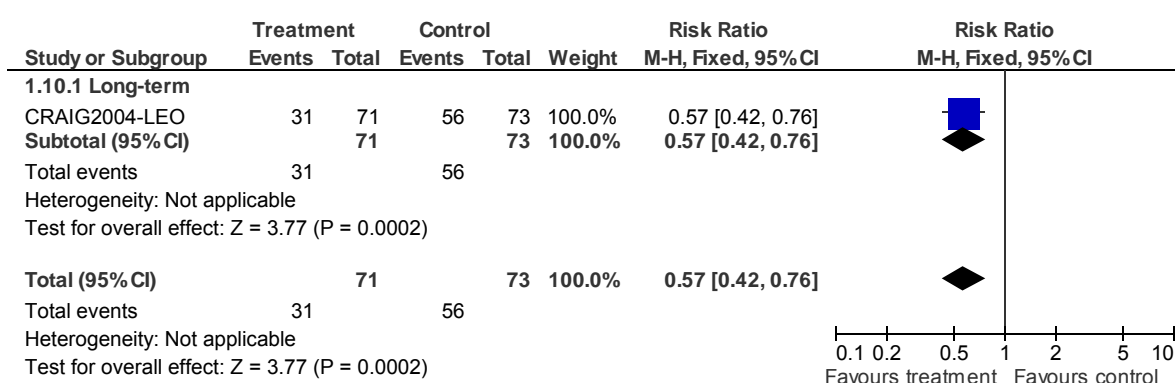


Access and engagement: Early intervention services

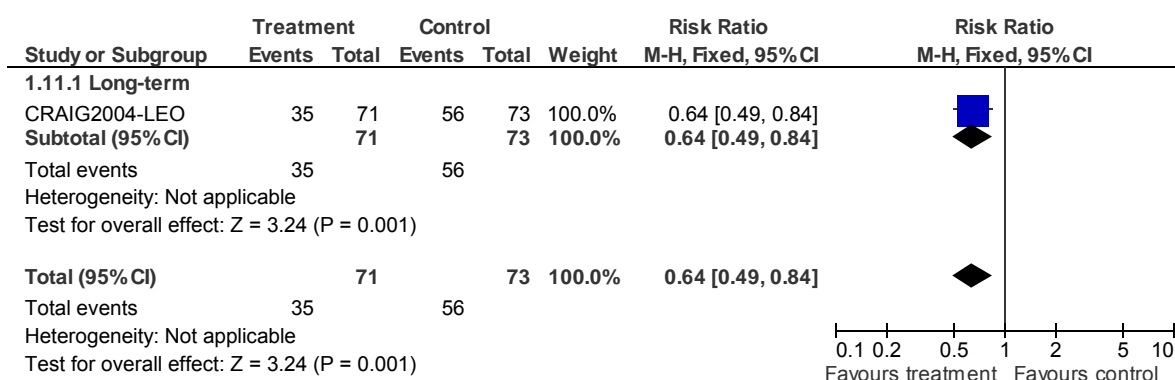
1.9 Service outcomes: 6. Not receiving any psychological intervention



1.10 Service outcomes: 7. Not receiving family interventions

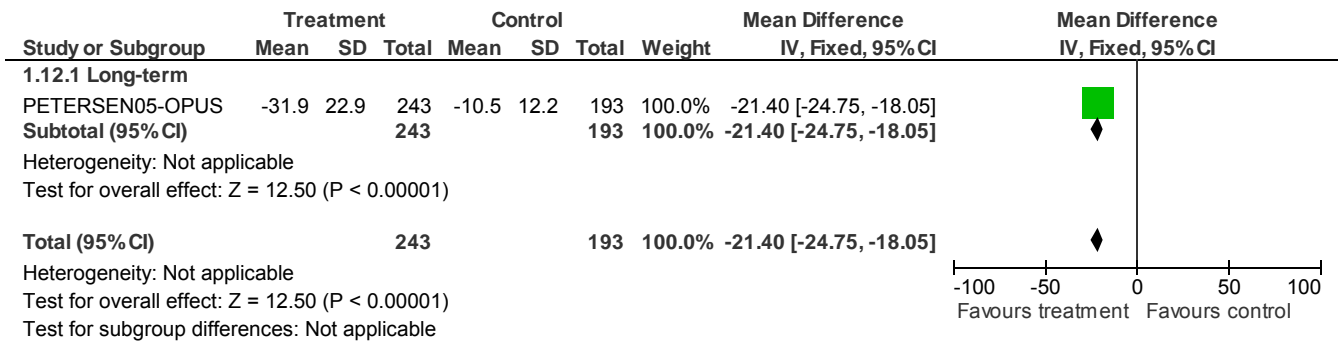


1.11 Service outcomes: 8. Not receiving vocational interventions

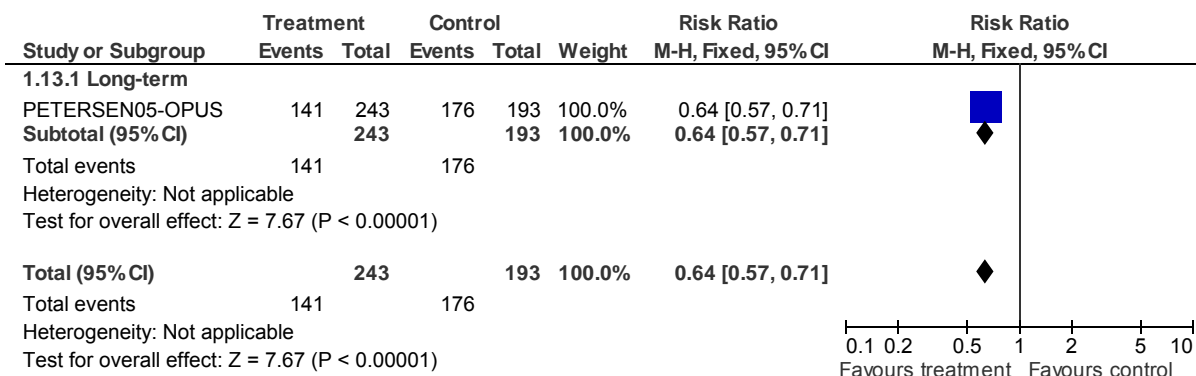


Access and engagement: Early intervention services

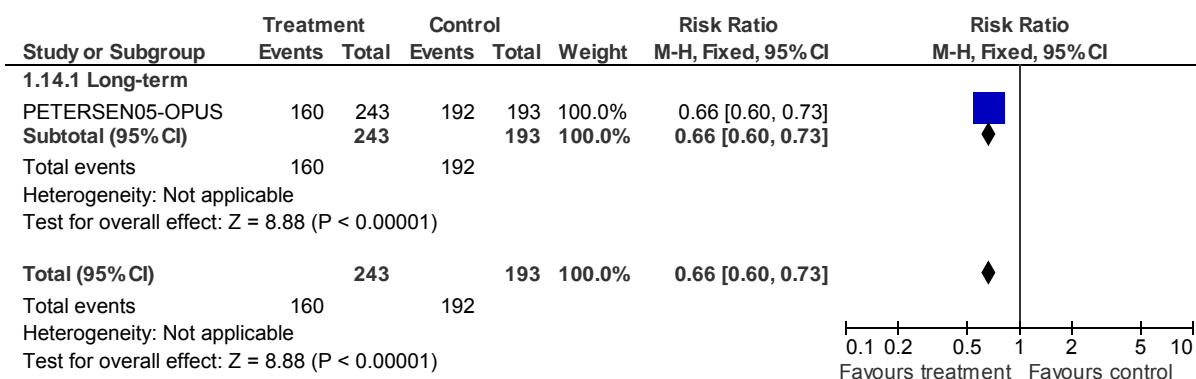
1.12 Service outcomes: 9. Mean number of outpatient visits (sign reversed)



1.13 Service outcomes: 10. Family not involved in treatment

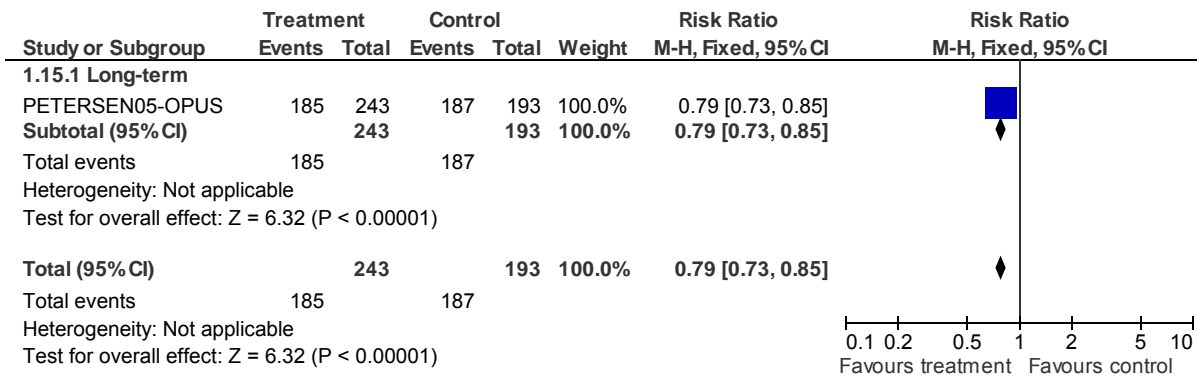


1.14 Service outcomes: 11. Family not involved in psychoeducational group

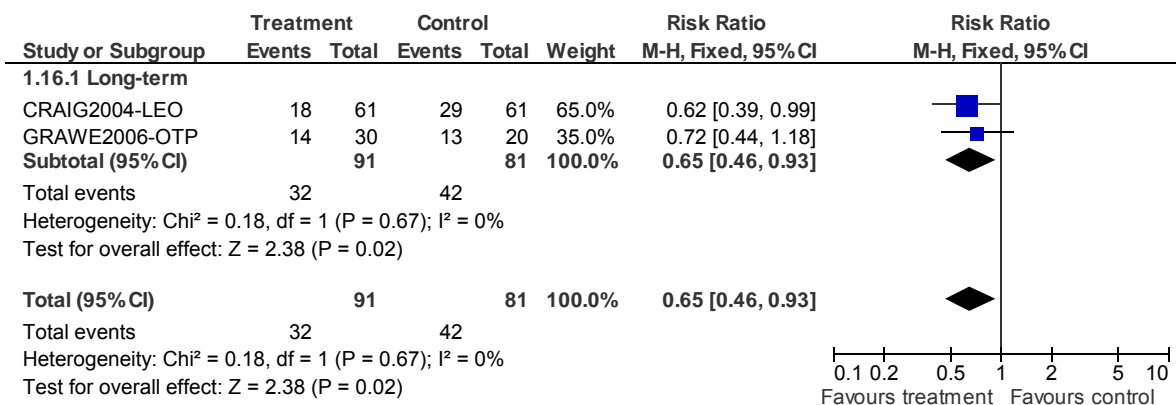


Access and engagement: Early intervention services

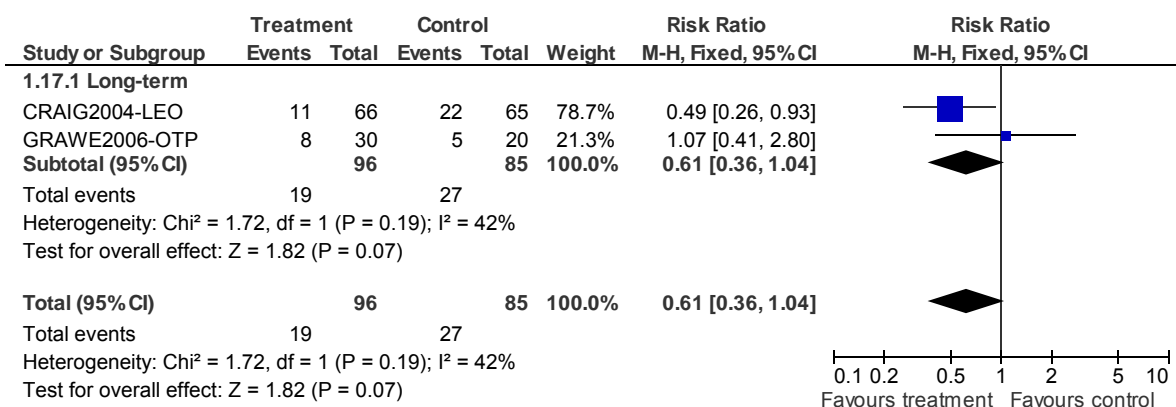
1.15 Service outcomes: 12. No social skills training or training in daily activities



1.16 Global state: 1. Relapse (full or partial)

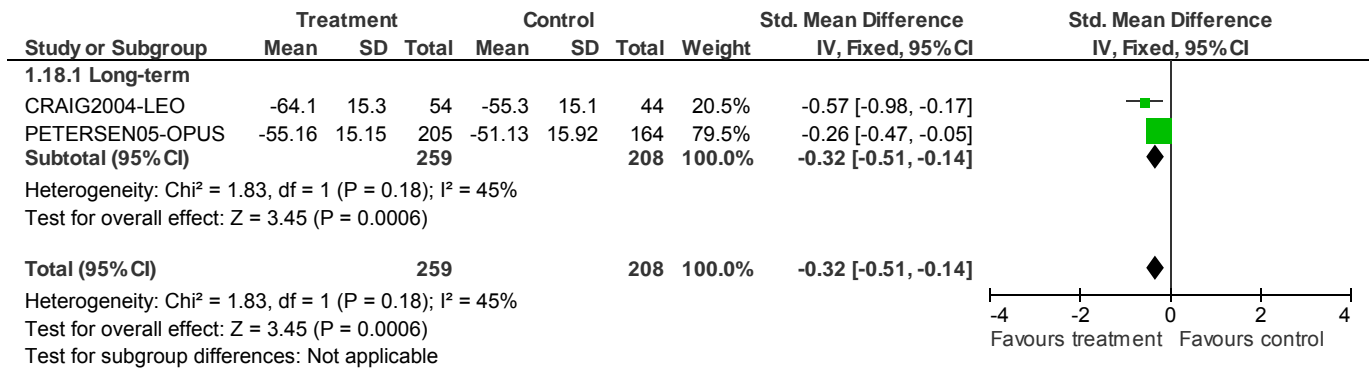


1.17 Global state: 1. Not achieving full or partial recovery at 18 months

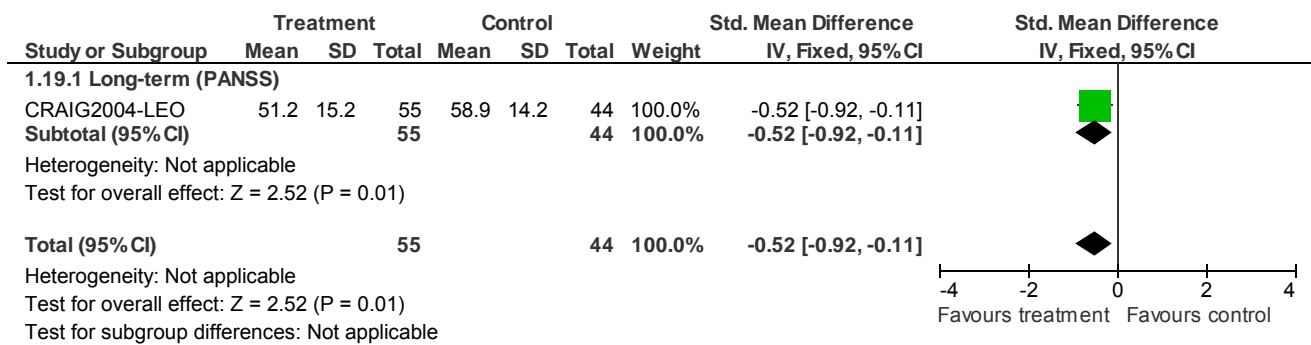


Access and engagement: Early intervention services

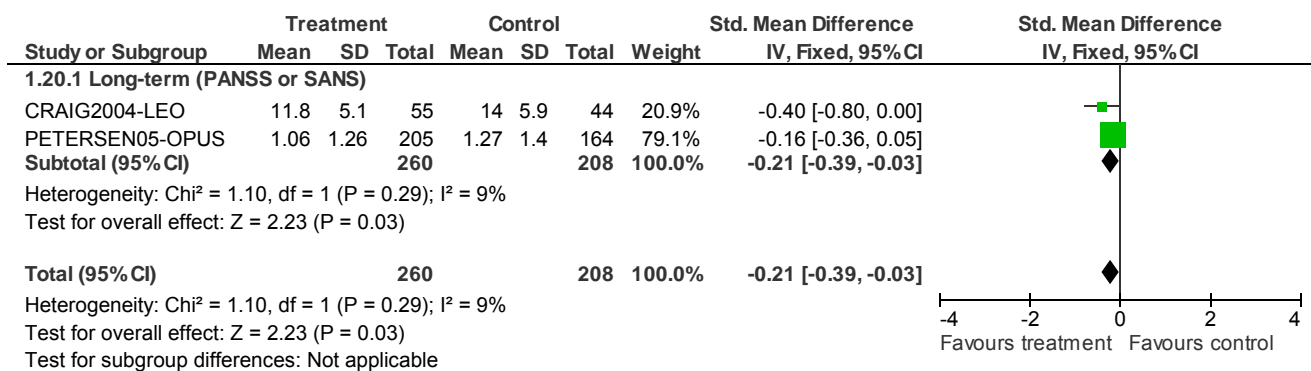
1.18 Global state: 3. GAF (higher=better; sign reversed)



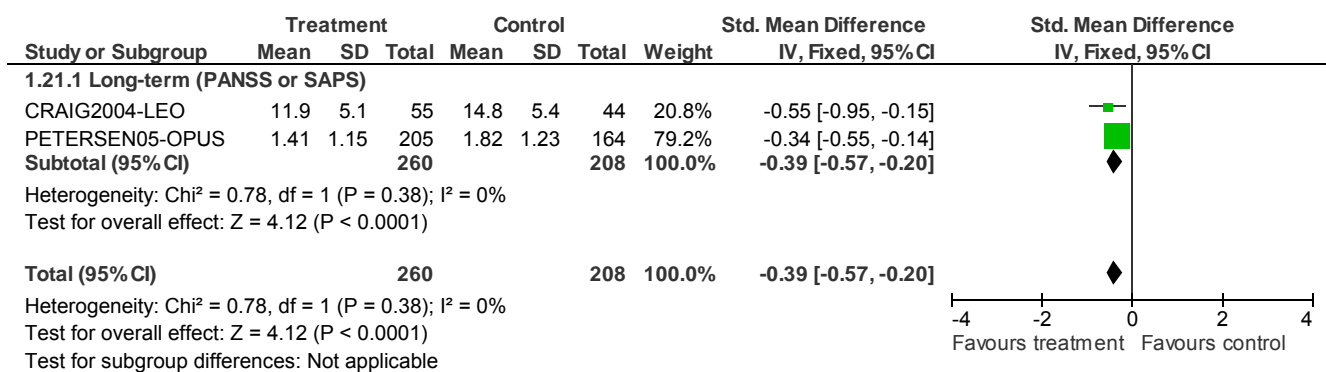
1.19 Mental state: 1. Total symptoms



1.20 Mental state: 2. Positive symptoms

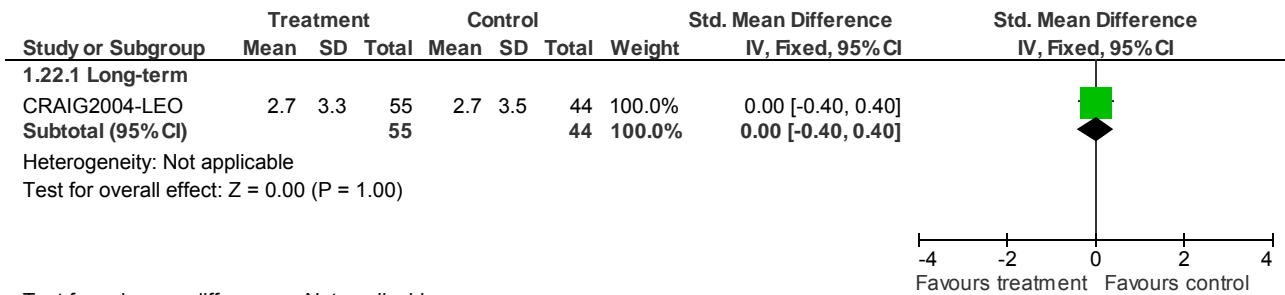


1.21 Mental state: 3. Negative symptoms



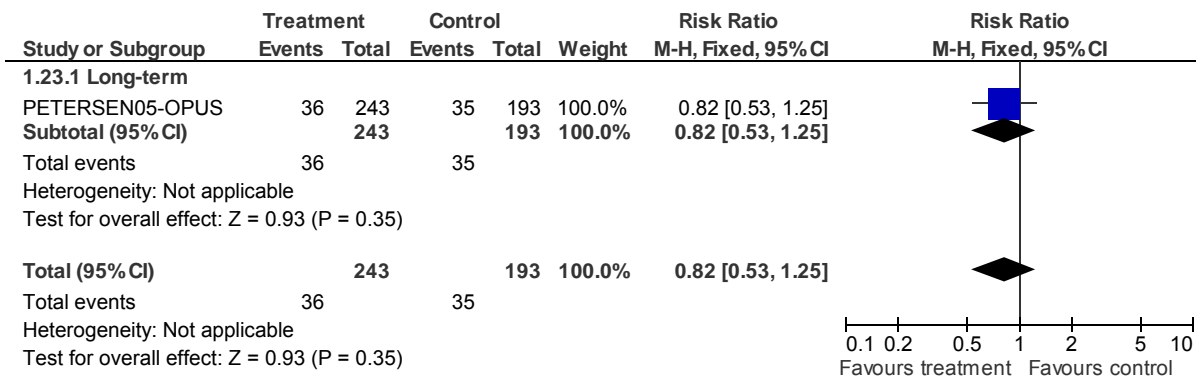
Access and engagement: Early intervention services

1.22 Mental state: 4. Depression (Calgary Depression Scale; lower = better)

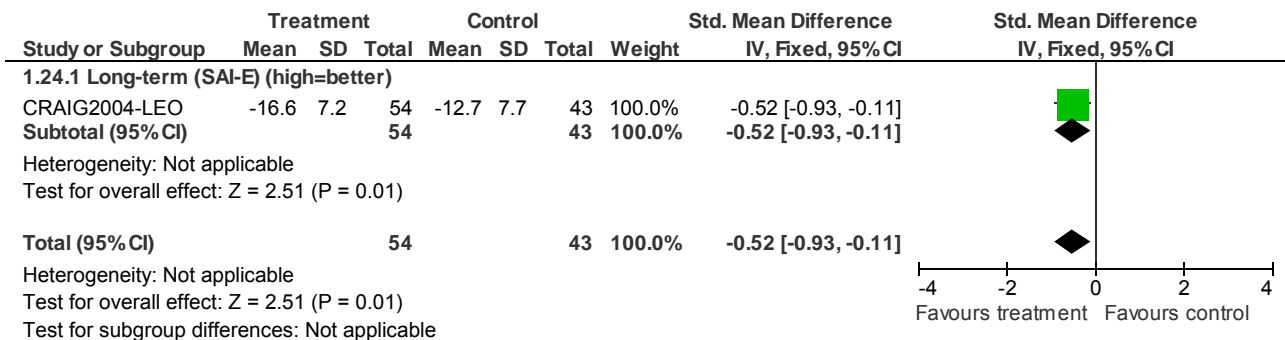


Test for subgroup differences: Not applicable

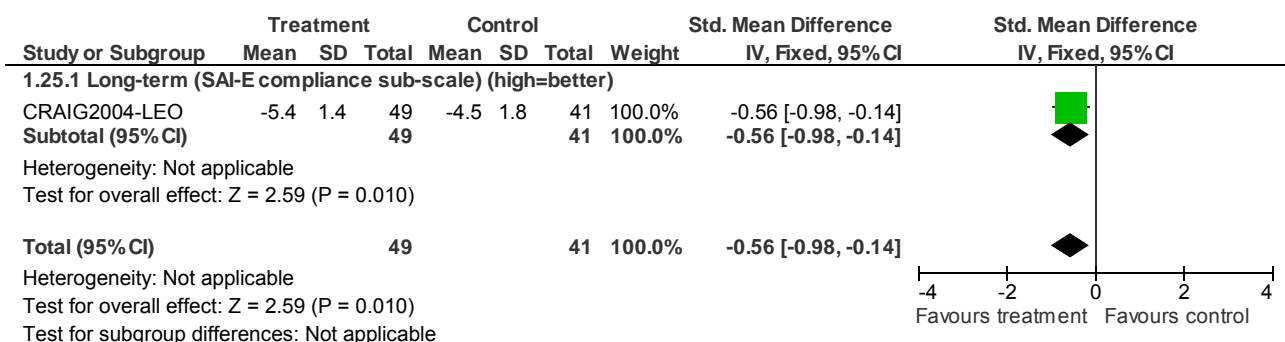
1.23 Mental state: 4. Depression (number diagnosed)



1.24 Psychosocial functioning: 1. Insight

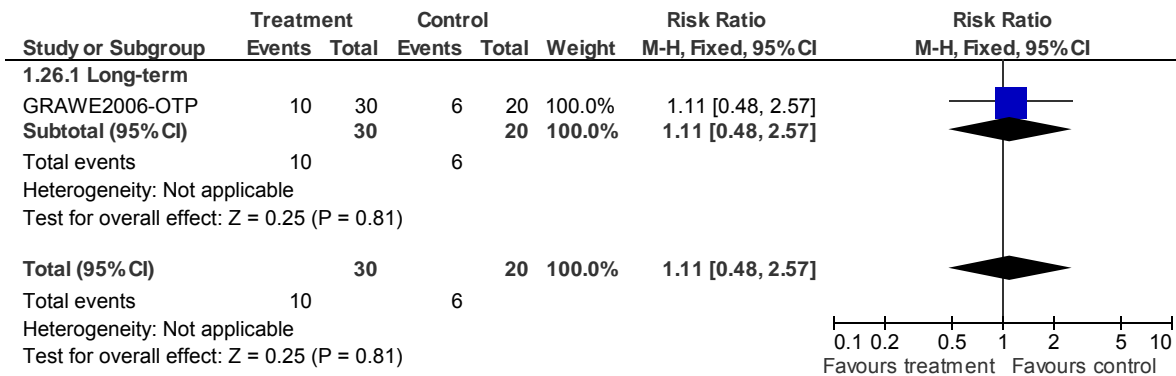


1.25 Psychosocial functioning: 2. Adherence

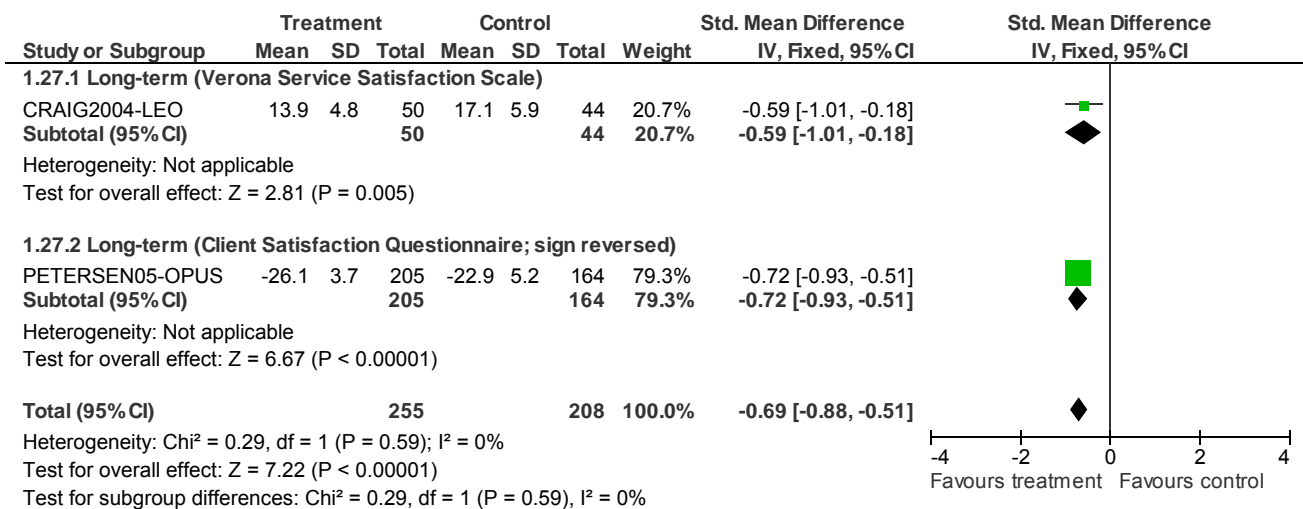


Access and engagement: Early intervention services

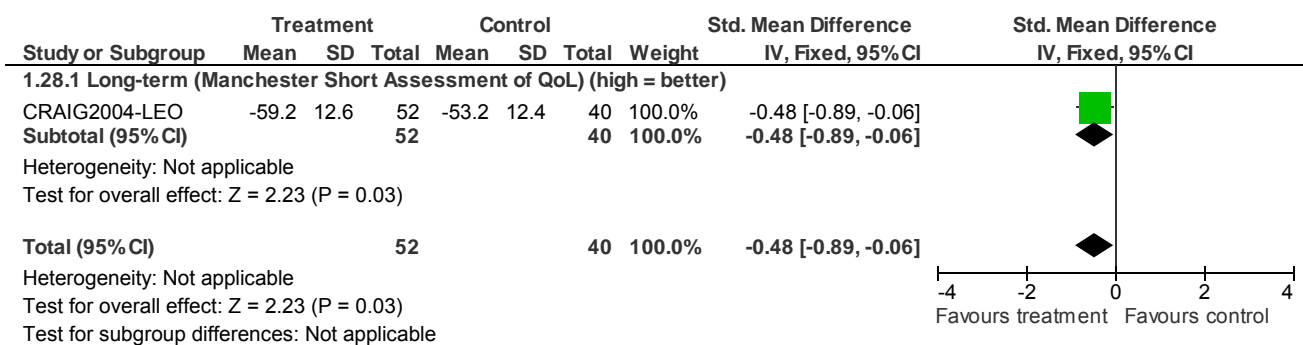
1.26 Psychosocial functioning: 2. Non-adherence to antipsychotic medication



1.27 Psychosocial functioning: 3. Satisfaction

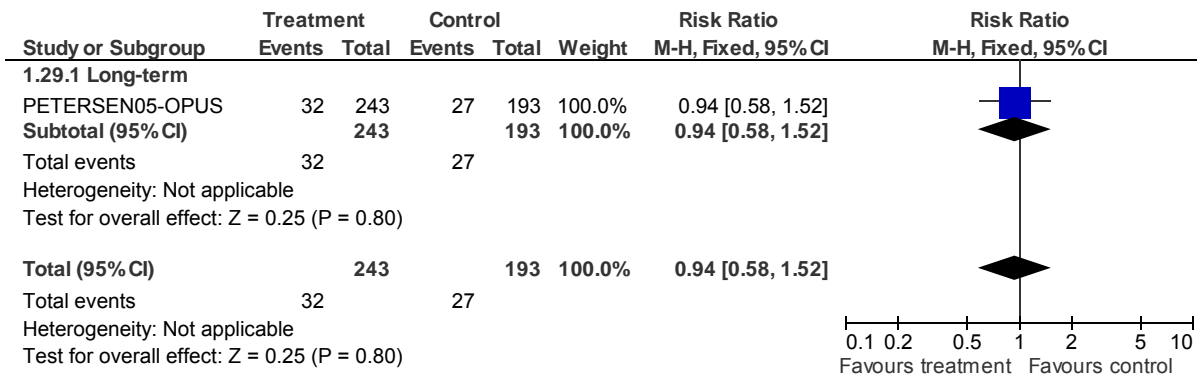


1.28 Psychosocial functioning: 4. QoL



Access and engagement: Early intervention services

1.29 Psychosocial functioning: 5. Not living independently



1.30 Psychosocial functioning: 6. Not working or in education

