

Putting NICE guidance into practice

Algorithm for risk assessment, prevention and management in children

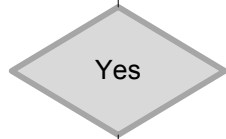
**Implementing the NICE guideline on
Pressure ulcers (CG179)**

Published: April 2014

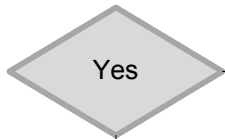
Identifying who is at high risk (neonates, infants, children, young people and adults)

Be aware that all patients are potentially at risk of developing a pressure ulcer.

Patient admitted to secondary care, care home or tertiary care?

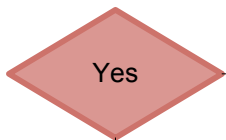


Carry out and document a risk assessment



Neonate, infant, child or young person?

Use a scale validated for this population (for example, the Braden Q scale for children) to support clinical judgement.



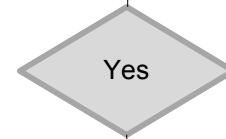
See NEONATES, INFANTS, CHILDREN AND YOUNG PEOPLE AT HIGH RISK

Neonate, infant, child or young person **at high risk** following risk assessment?

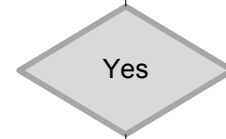


See NEONATES, INFANTS, CHILDREN AND YOUNG PEOPLE AT RISK

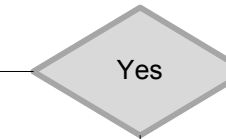
Receiving NHS care in primary or community care and emergency departments?



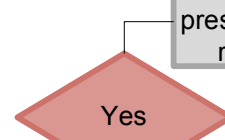
Does the individual have a risk factor?



Carry out and document a risk assessment

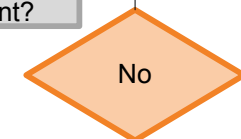


Consider using a validated scale for risk assessment to support clinical judgement (for example, the Braden scale, the Waterlow score or the Norton risk assessment scale)

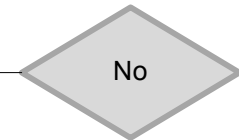


See ADULTS AT HIGH RISK

Adult at **high risk** of pressure ulcer following risk assessment?



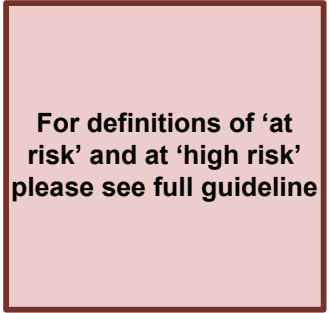
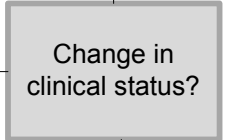
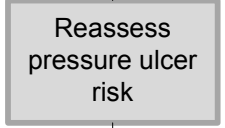
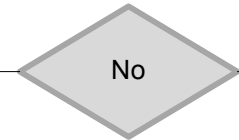
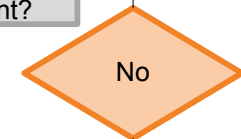
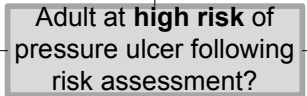
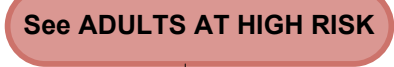
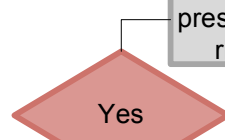
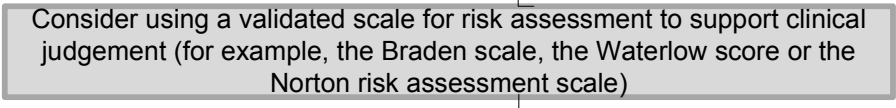
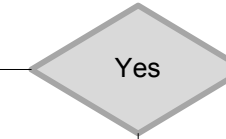
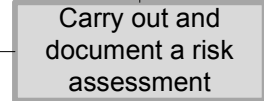
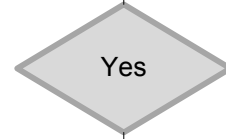
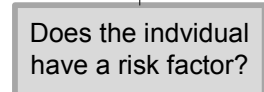
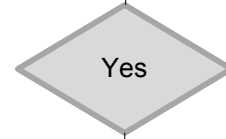
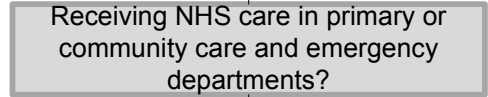
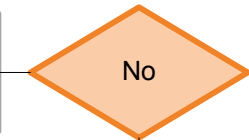
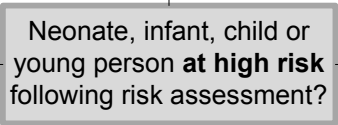
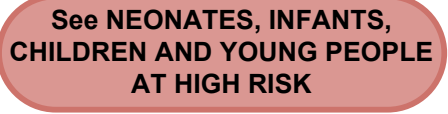
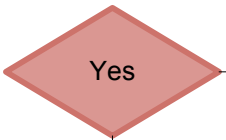
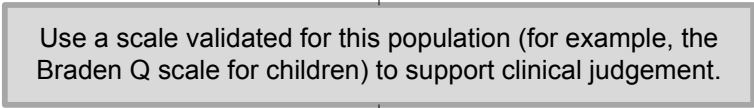
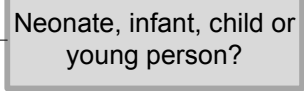
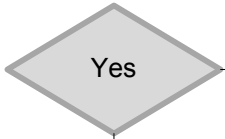
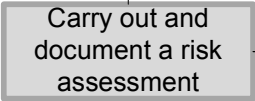
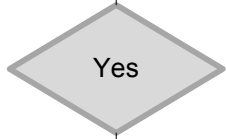
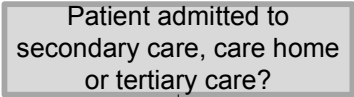
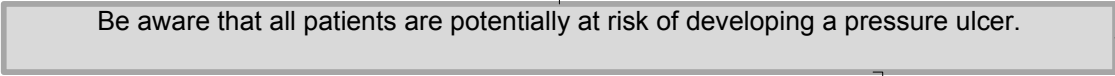
See ADULTS AT RISK



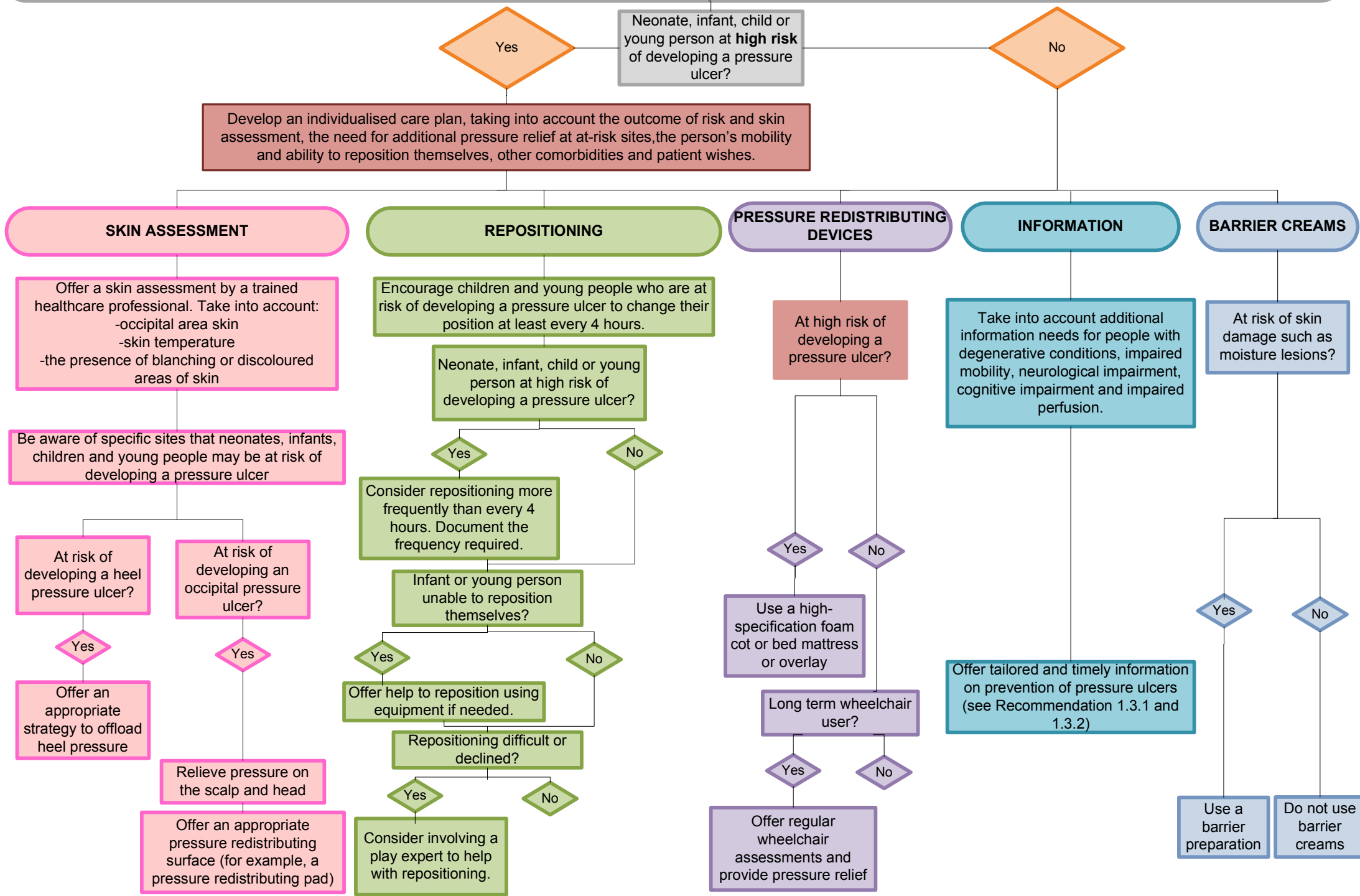
Reassess pressure ulcer risk

Change in clinical status?

For definitions of 'at risk' and at 'high risk' please see full guideline



Prevention of pressure ulcers in neonates, infants, children and young people



Management of pressure ulcers in neonates, infants, children and young people

Categorise each pressure ulcer using a validated classification tool.

Repeat and document the results of categorisation each time the ulcer is assessed, using a validated classification tool.

