

APPENDIX 36: PHARMACOLOGICAL INTERVENTIONS FOR MANIA – SENSITIVITY ANALYSIS

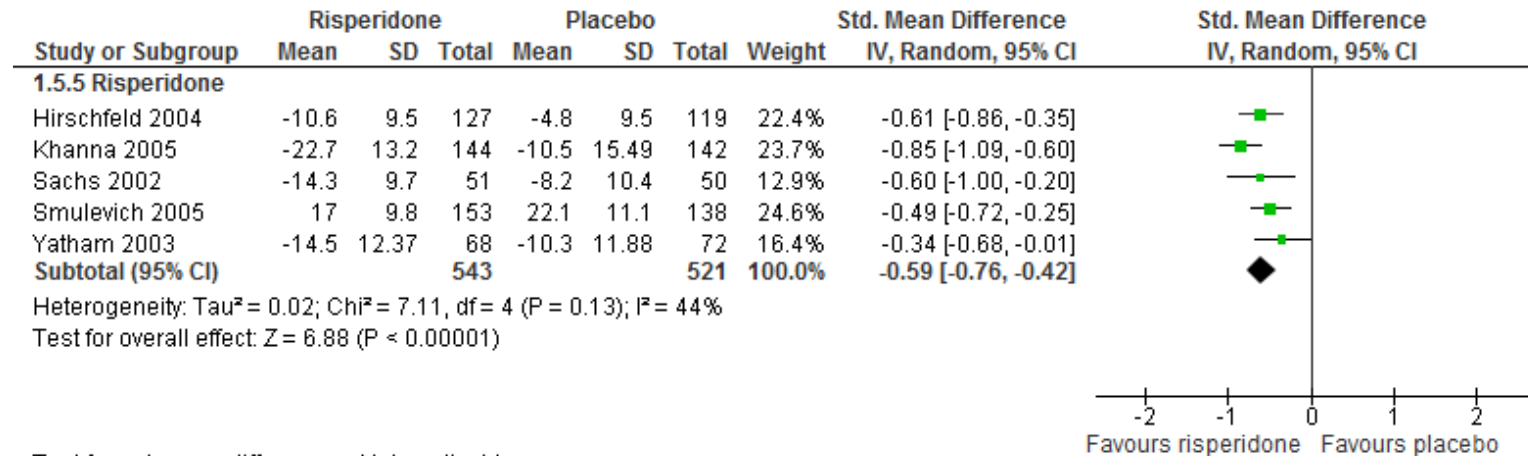
1.1	Efficacy (continuous outcomes)	2
1.1.1	Original analysis (including KHANNA2005).....	2
1.1.2	Sensitivity analysis (excluding KHANNA2005)	2
1.2	All-cause dropout rate (dichotomous outcome).....	3
1.2.1	Original analysis (including KHANNA2005).....	3
1.2.2	Sensitivity analysis (excluding KHANNA2005)	3

Abbreviations

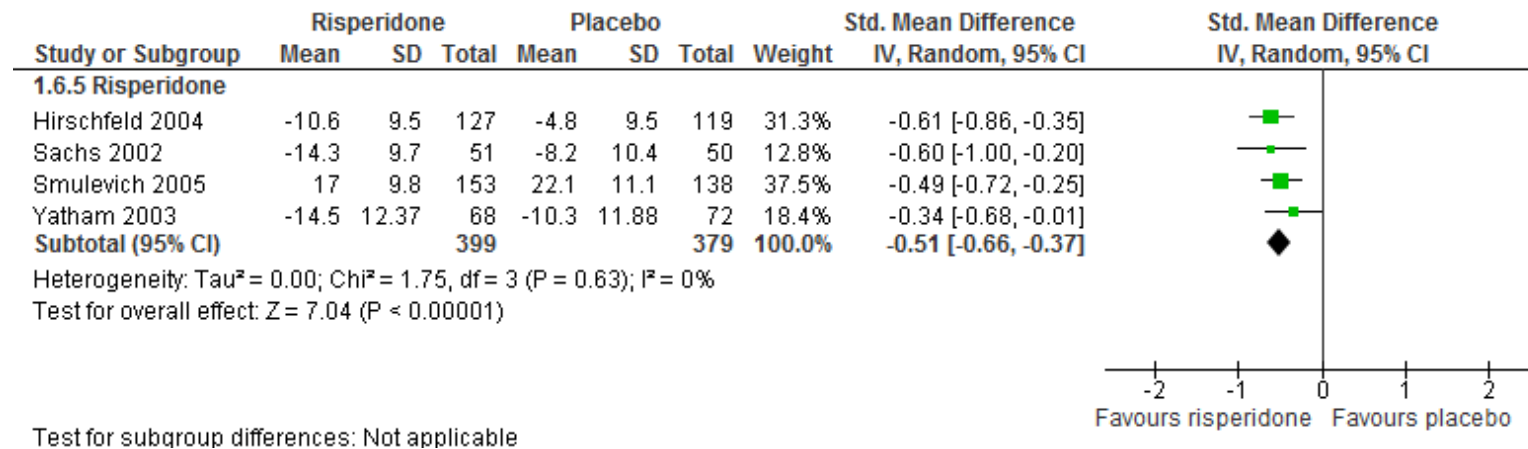
CI	confidence interval
IV	intravariance
M-H	Mantel-Haenszel
SD	standard deviation

1.1 EFFICACY (CONTINUOUS OUTCOMES)

1.1.1 Original analysis (including KHANNA2005)

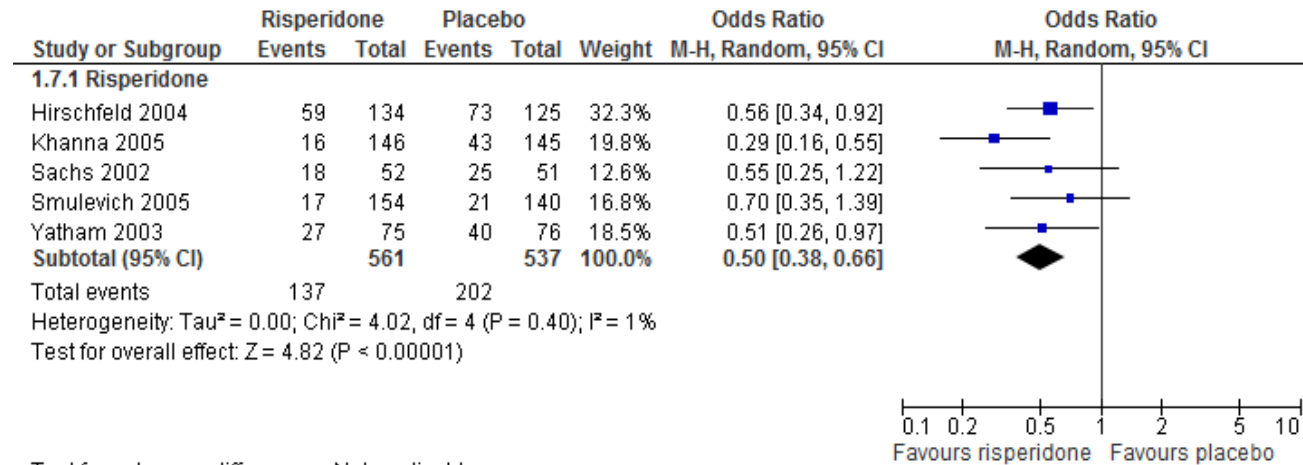


1.1.2 Sensitivity analysis (excluding KHANNA2005)



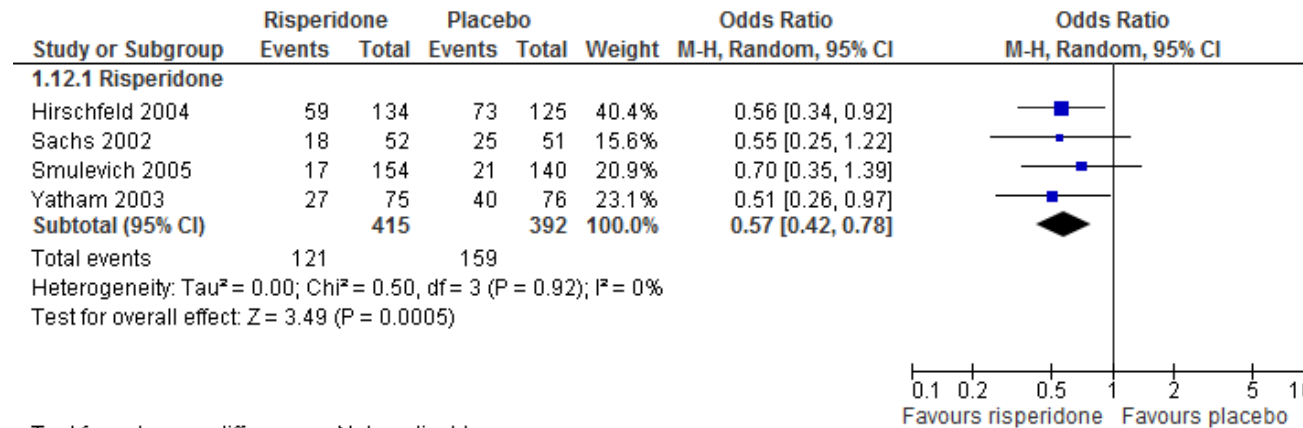
1.2 ALL-CAUSE DROPOUT RATE (DICHOTOMOUS OUTCOME)

1.2.1 Original analysis (including KHANNA2005)



Test for subgroup differences: Not applicable

1.2.2 Sensitivity analysis (excluding KHANNA2005)



Test for subgroup differences: Not applicable

REFERENCES

Hirschfeld RM, Keck PE Jr, Kramer M, Karcher K, Canuso C, Eerdekens M, Grossman F . Rapid antimanic effect of risperidone e monotherapy: a 3-week multicenter, double-blind, placebo-controlled trial. *Am J Psychiatry* 2004; 161:1057-65.

Sachs G, Chengappa KNR, Suppes T, Mullen JA, Brecher M, Devine NA, Sweitzer DE. Quetiapine with lithium or divalproex for the treatment of bipolar mania: a randomized, double blind, placebo controlled study. *Bipolar Disorders*. 2004;6:213-223.

Smulevich AB, Khanna S, Eerdekens M, Karcher K, Kramer M, Grossman F. Acute and continuation risperidone monotherapy in bipolar mania: a 3-week placebo controlled trial followed by a 9-week double-blind trial of risperidone and haloperidol. *European Neuropsychopharmacology*. 2005;15:75-84

Yatham LN, Grossman F, Augustyns I, Vieta E, Ravindran A. Mood stabilisers plus risperidone or placebo in the treatment of acute mania. International, double-blind, randomised controlled trial. *British Journal of Psychiatry*. 2003;182:141-47.