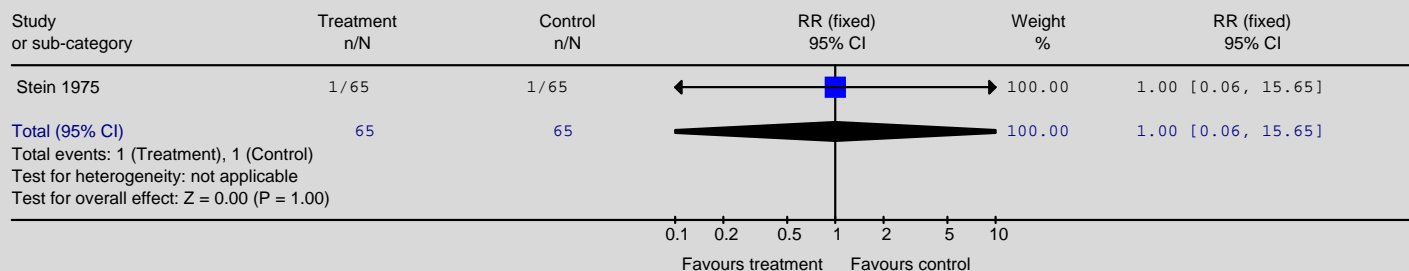


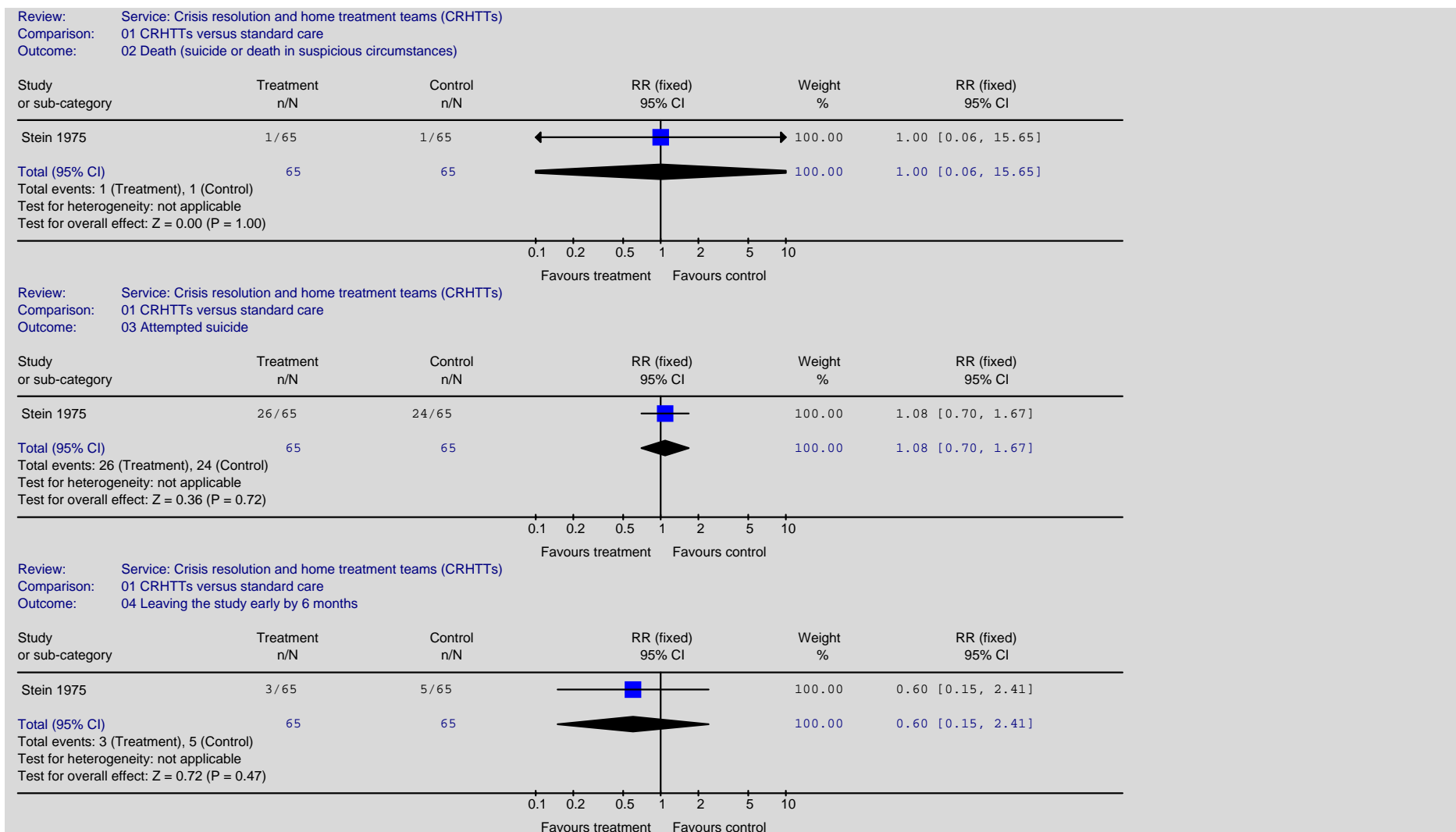
Appendix 19a: Clinical evidence forest plots for service

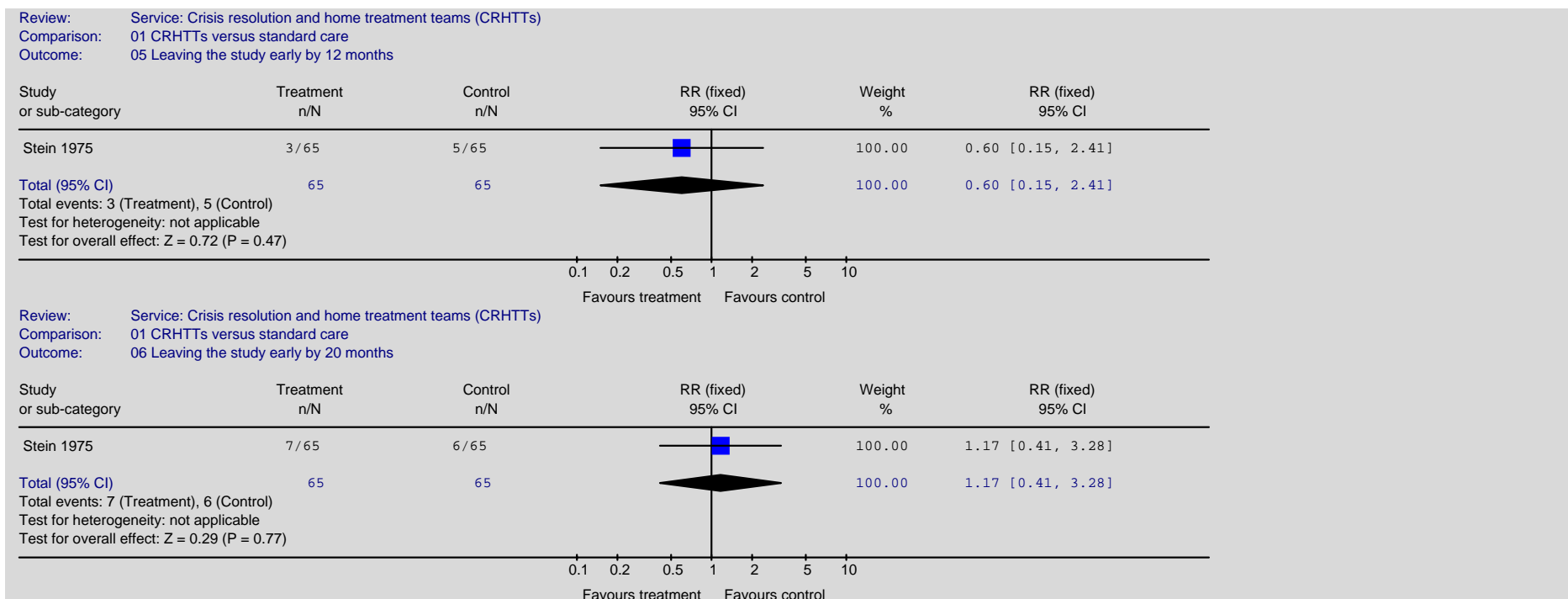
[Crisis resolution and home treatment teams \(CRHTTs\)](#), [Day hospitals](#), [Non-statutory support](#), [Service delivery systems in the treatment and management of depression: collaborative care](#); [Service delivery systems in the treatment and management of depression: medication management](#); [Service delivery systems in the treatment and management of depression: attached professional](#)

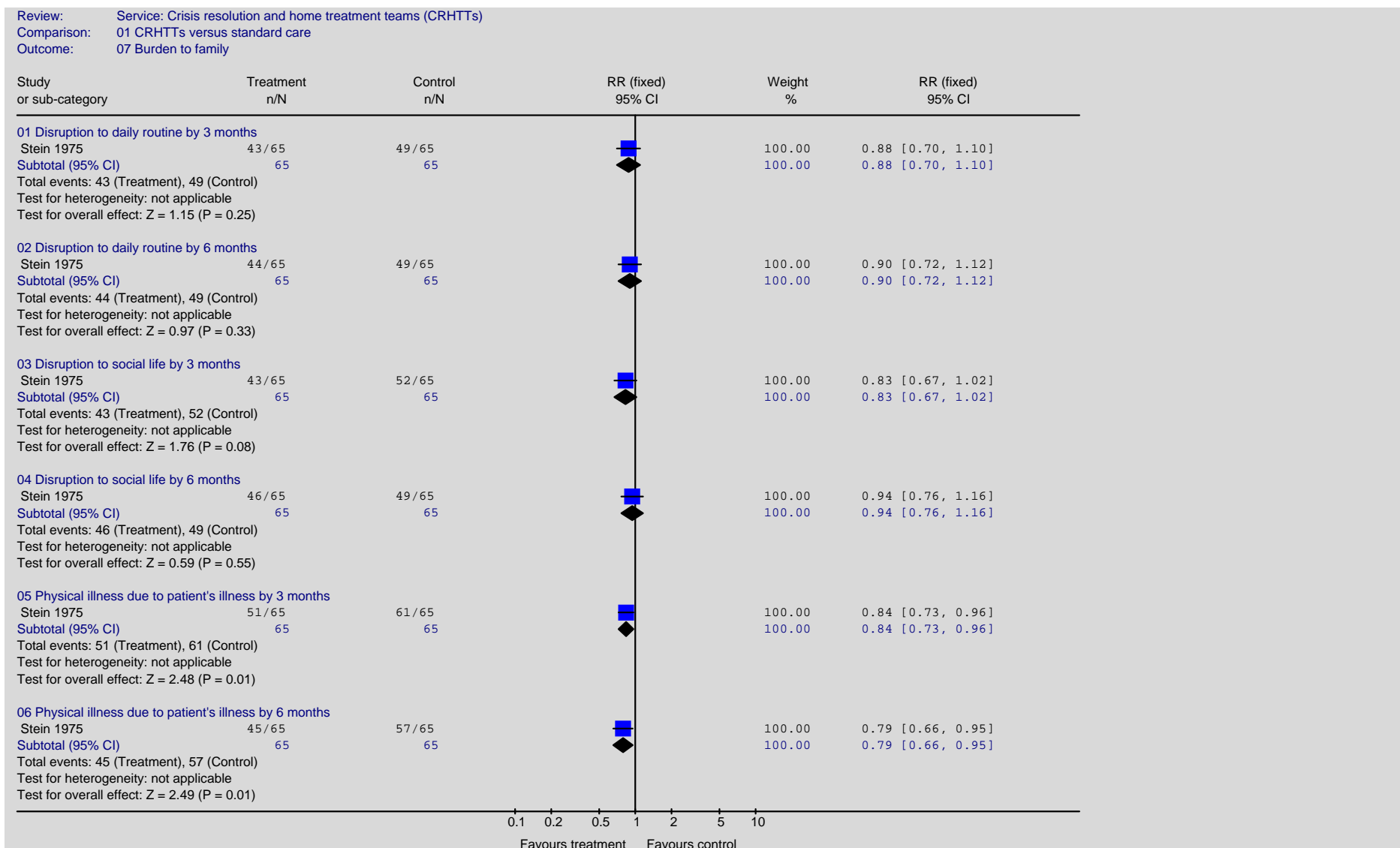
Crisis resolution and home treatment teams (CRHTTs)

Review: Service: Crisis resolution and home treatment teams (CRHTTs)
 Comparison: 01 CRHTTs versus standard care
 Outcome: 01 Death (any cause)

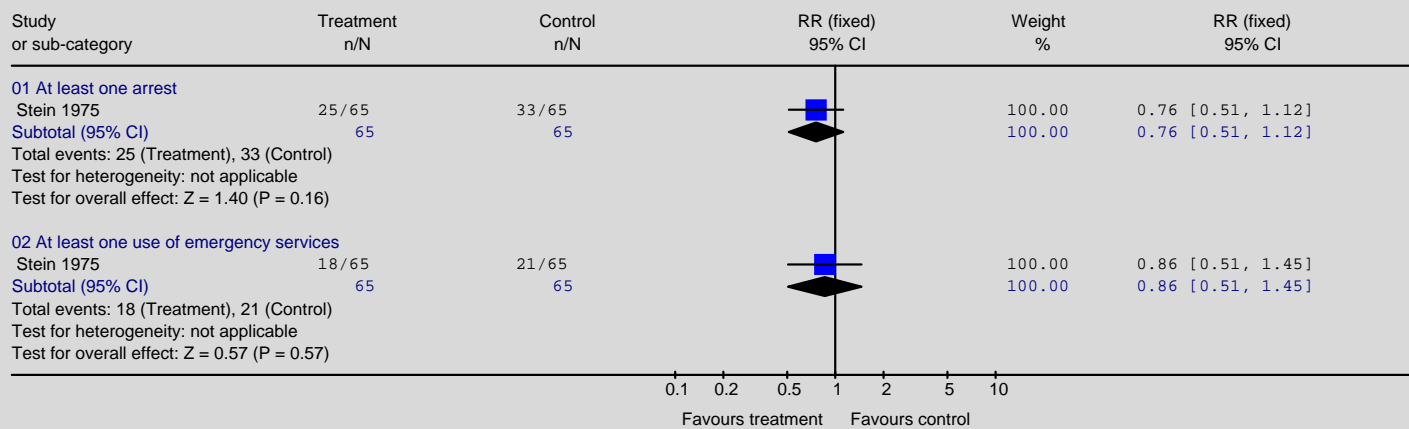






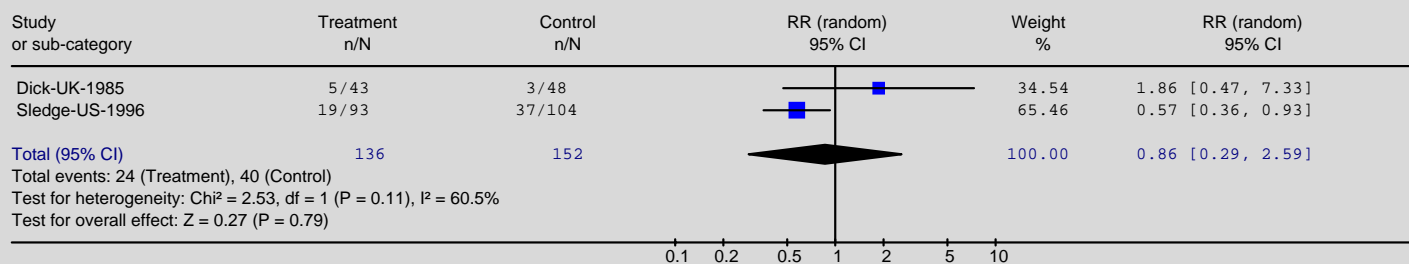


Review: Service: Crisis resolution and home treatment teams (CRHTTs)
 Comparison: 01 CRHTTs versus standard care
 Outcome: 08 Burden to community

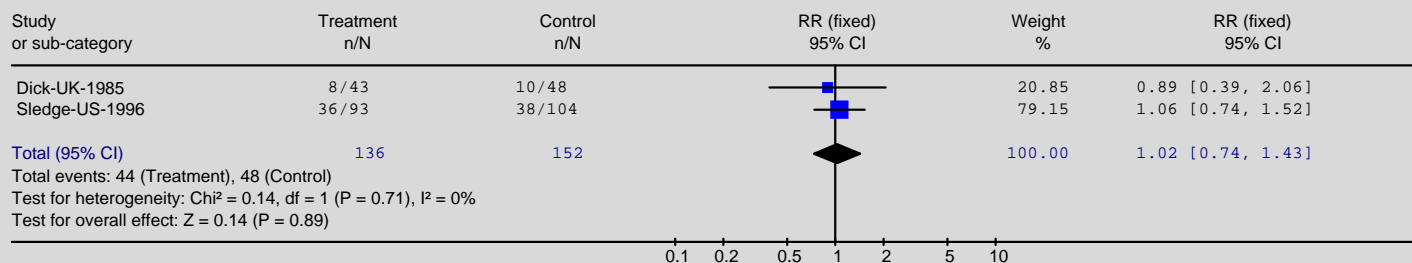


Day hospitals

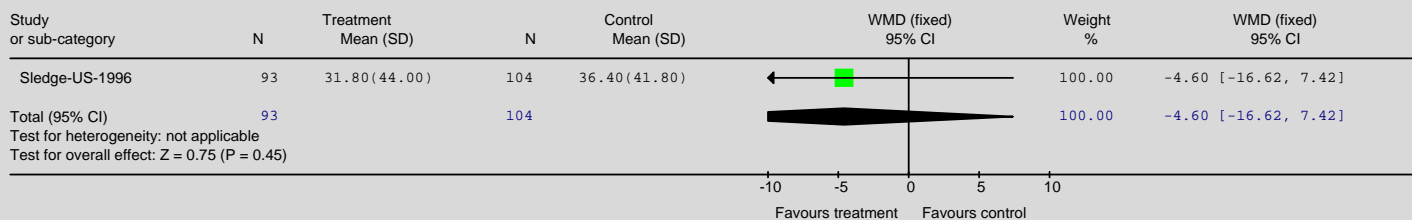
Review: Service: Day hospitals
 Comparison: 01 Day hospital vs Inpatient care Type 1 trials (unsuitable patients excluded before randomisation)
 Outcome: 01 Leaving the study early for any reason



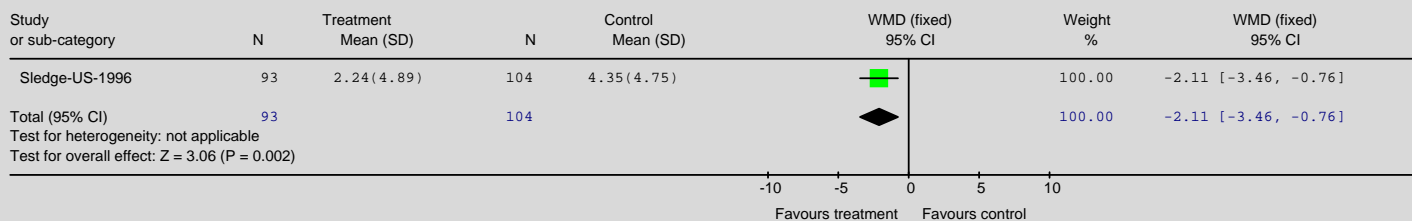
Review: Service: Day hospitals
 Comparison: 01 DP vs IP Type 1 trials (unsuitable patients excluded before randomisation)
 Outcome: 03 Readmitted to IP or DP care after discharge from IP or DP care.

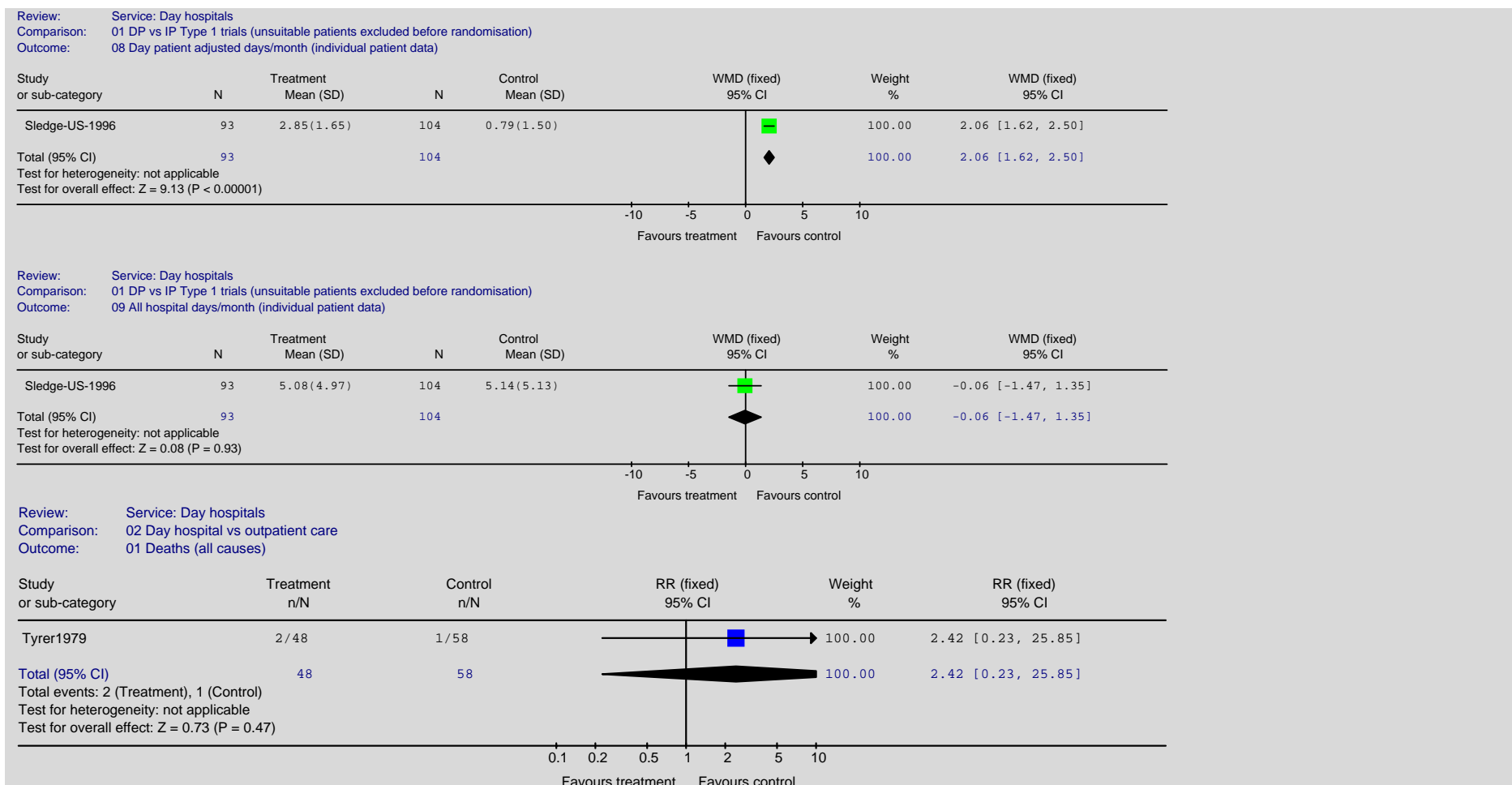


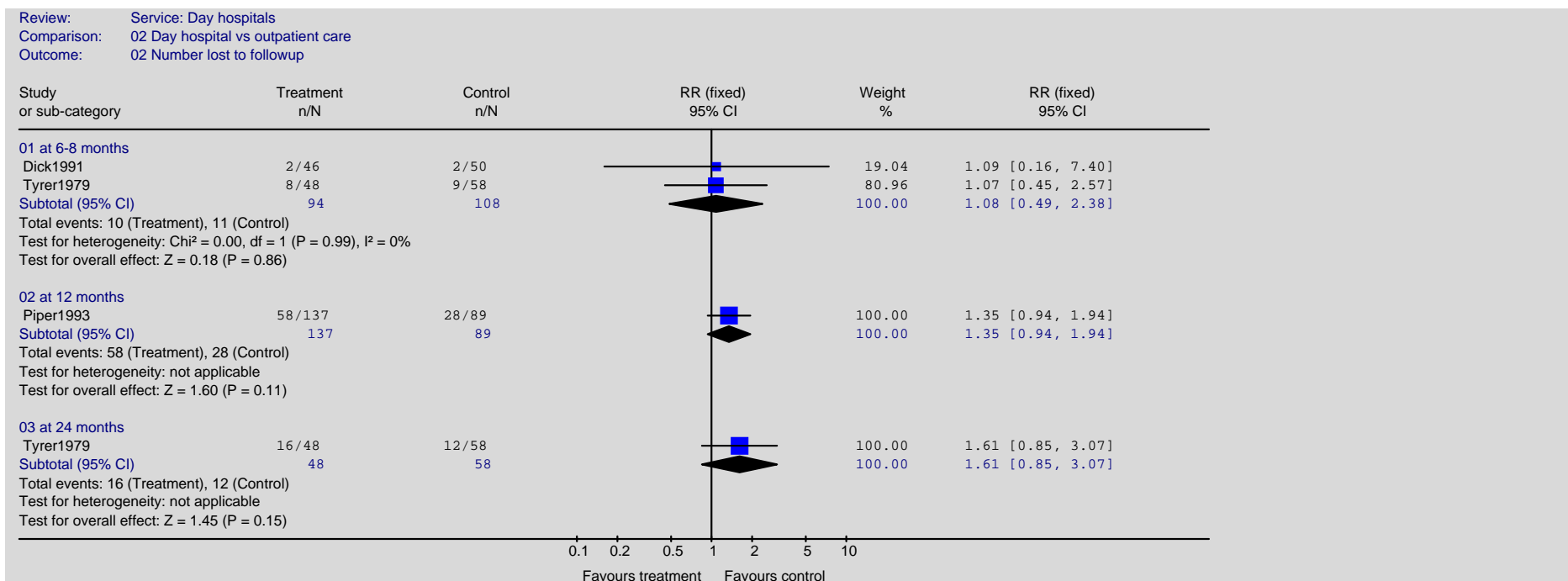
Review: Service: Day hospitals
 Comparison: 01 DP vs IP Type 1 trials (unsuitable patients excluded before randomisation)
 Outcome: 06 Duration of index admission (individual patient data)

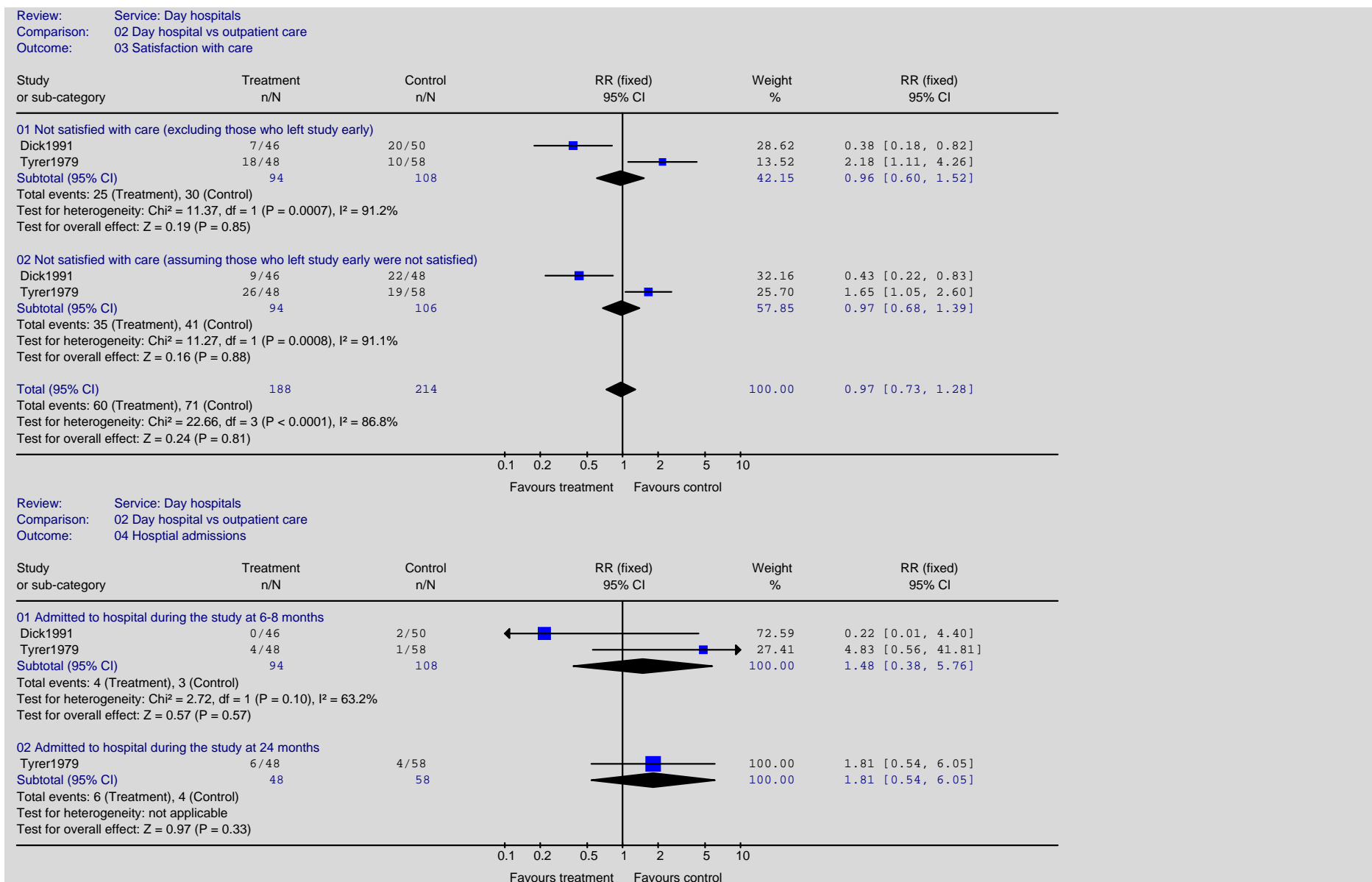


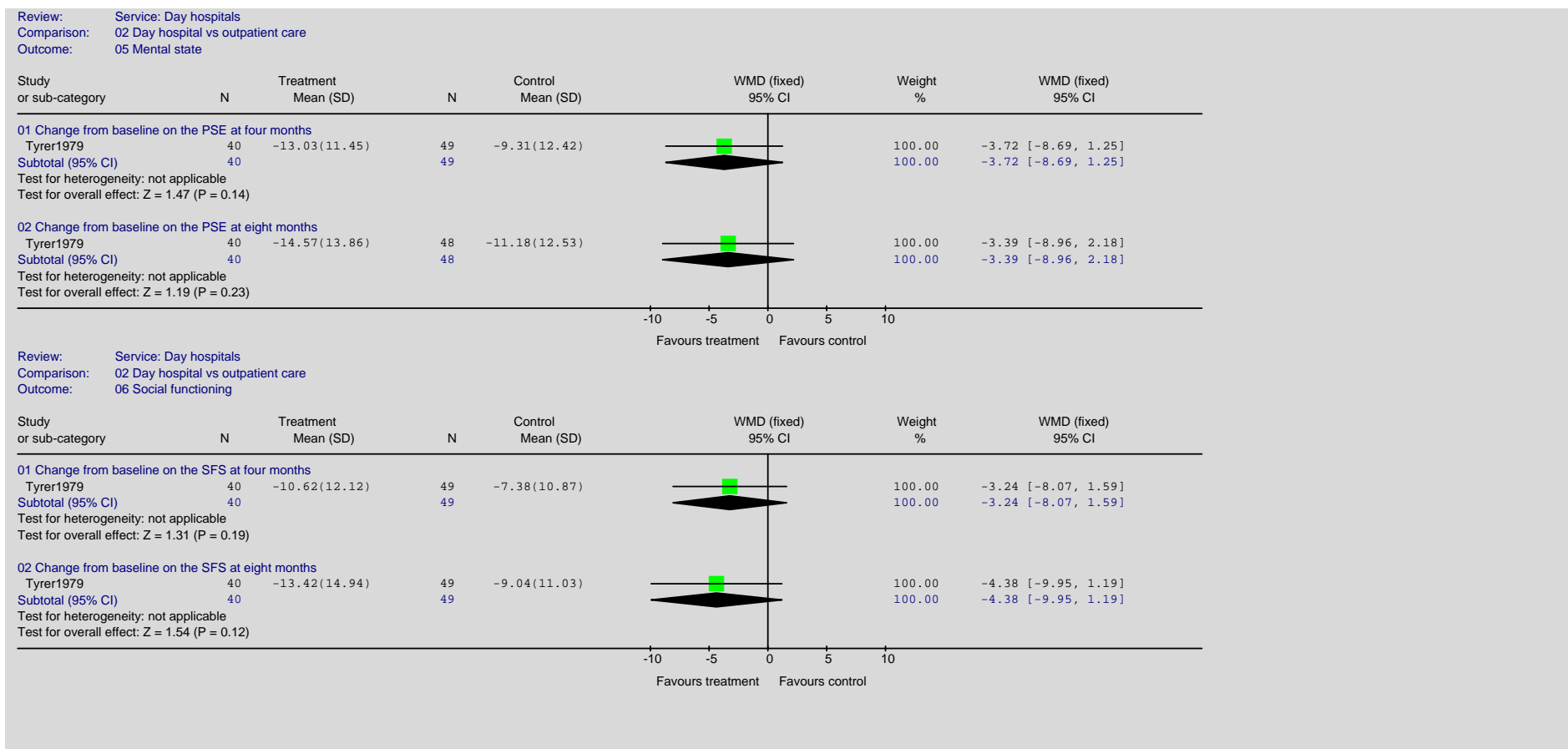
Review: Service: Day hospitals
 Comparison: 01 DP vs IP Type 1 trials (unsuitable patients excluded before randomisation)
 Outcome: 07 Inpatient Days/month (individual patient data)





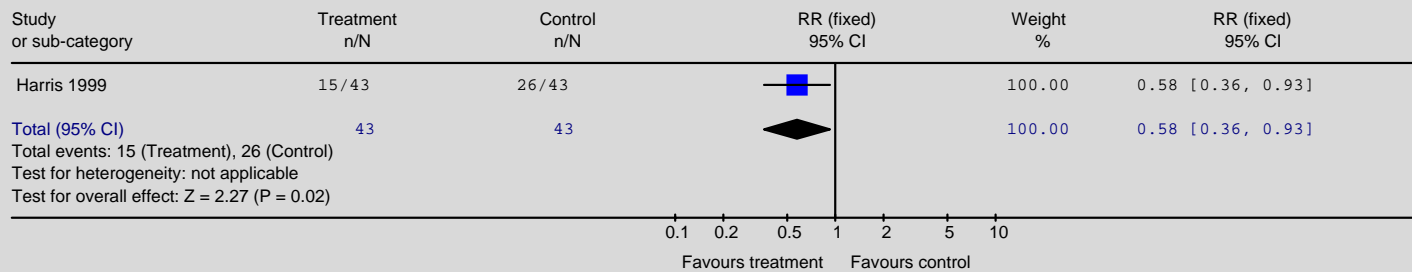






Non-statutory support

Review: Service: Befriending
 Comparison: 01 Befriending versus wait list control
 Outcome: 01 Non-remitters



Service delivery systems in the treatment and management of depression

Service delivery systems in the treatment and management of depression: collaborative care		2
01: Efficacy - pre-sensitivity analysis.....	3	
01.01 Non-response at endpoint - ordered by year of publication.....	3	
01.02 Non-response at follow-up: 3 months.....	4	
01.03 Non-remission at endpoint.....	5	
01.04 Non-remission at follow-up: 3 months.....	6	
01.05 Non-remission at follow-up: 12 months.....	6	
01.06 Relapse at endpoint.....	7	
01.07 Mean endpoint (clinician-rated and self-rated).....	8	
01.08 Mean endpoint (self-rated) at follow-up: 3-4 months.....	9	
01.09 Mean change at endpoint (clinician rated).....	9	
02: Acceptability and tolerability - pre-sensitivity analysis.....	10	
02.01 Dropout at endpoint.....	10	
02.02 Non-adherence to medication at endpoint.....	11	
03: Efficacy - Sensitivity analysis.....	12	
03.01 Non-response at endpoint - ordered by year of publication.....	12	
03.02 Non-remission at endpoint.....	13	
03.03 Non-remission at follow-up: 12 months.....	14	
03.04 Relapse at endpoint.....	14	
03.05 Mean endpoint (clinician-rated and self-rated).....	15	
03.06 Mean endpoint (self-rated) at follow-up: 3-4 months.....	16	
03.07 Mean change at endpoint.....	16	
04: Acceptability and tolerability - sensitivity analysis.....	17	
04.01 Dropout at endpoint.....	17	
04.02 Non-adherence to medication at endpoint.....	18	
Service delivery systems in the treatment and management of depression: medication management		18
01: Efficacy.....	19	

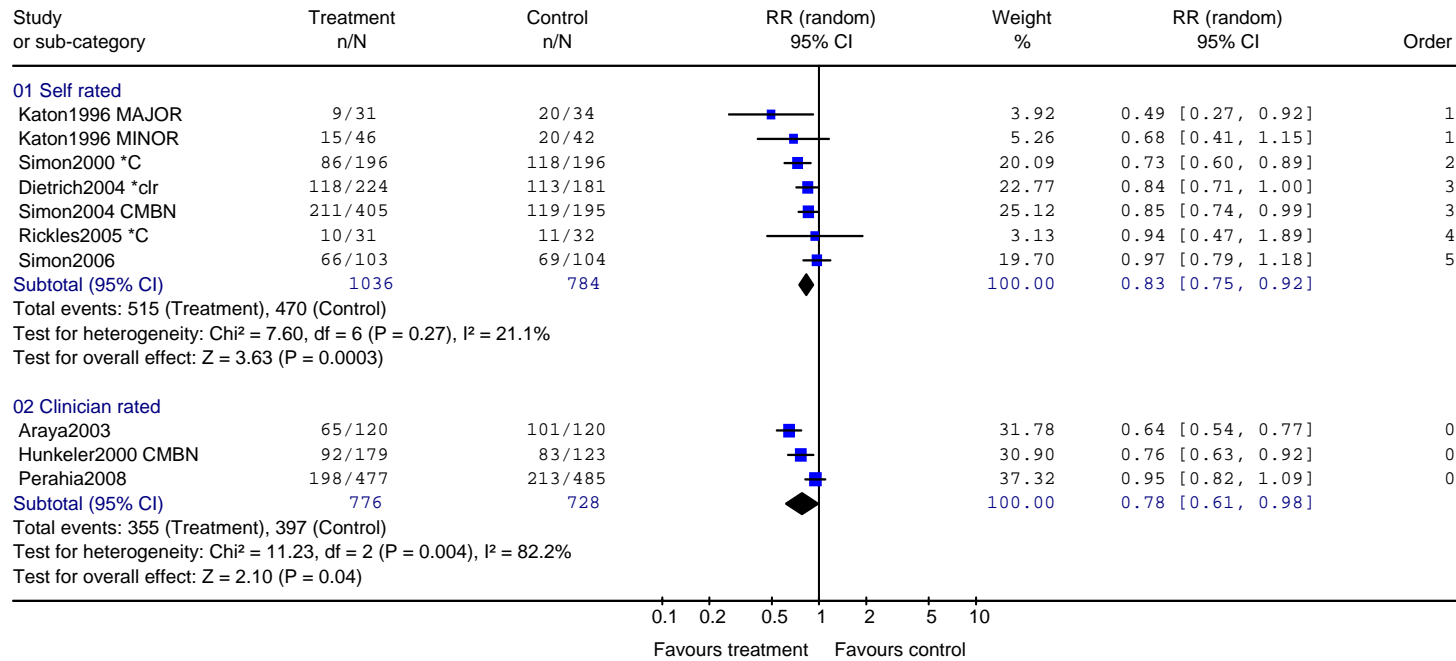
01.01 Non-response at endpoint	19
01.02 Mean endpoint (self-rated).....	19
01.03 Non-adherence to medication at endpoint	20
02: Acceptability and tolerability.....	21
02.01 Dropout at endpoint	21
Service delivery systems in the treatment and management of depression: attached professional	21
01: Efficacy.....	22
Mean endpoint (self-rated and clinician-rated).....	22

Service delivery systems in the treatment and management of depression: collaborative care

01: Efficacy - pre-sensitivity analysis

01.01 Non-response at endpoint - ordered by year of publication1

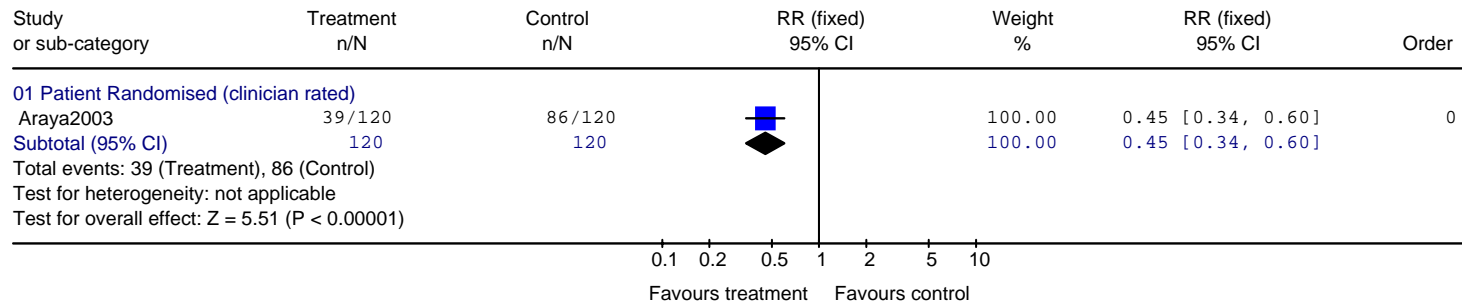
Review: Depression Update Service: Collaborative Care
 Comparison: 01 Overall Efficacy v usual care - post ICC adjustment
 Outcome: 01 Number not achieving =>50% reduction in outcome score at endpoint



1 MAJOR = major depression arm of study; MINOR = minor depression arm of study; *C = completers analysis; *clr = cluster randomised (adjusted); CMBN = combined arms

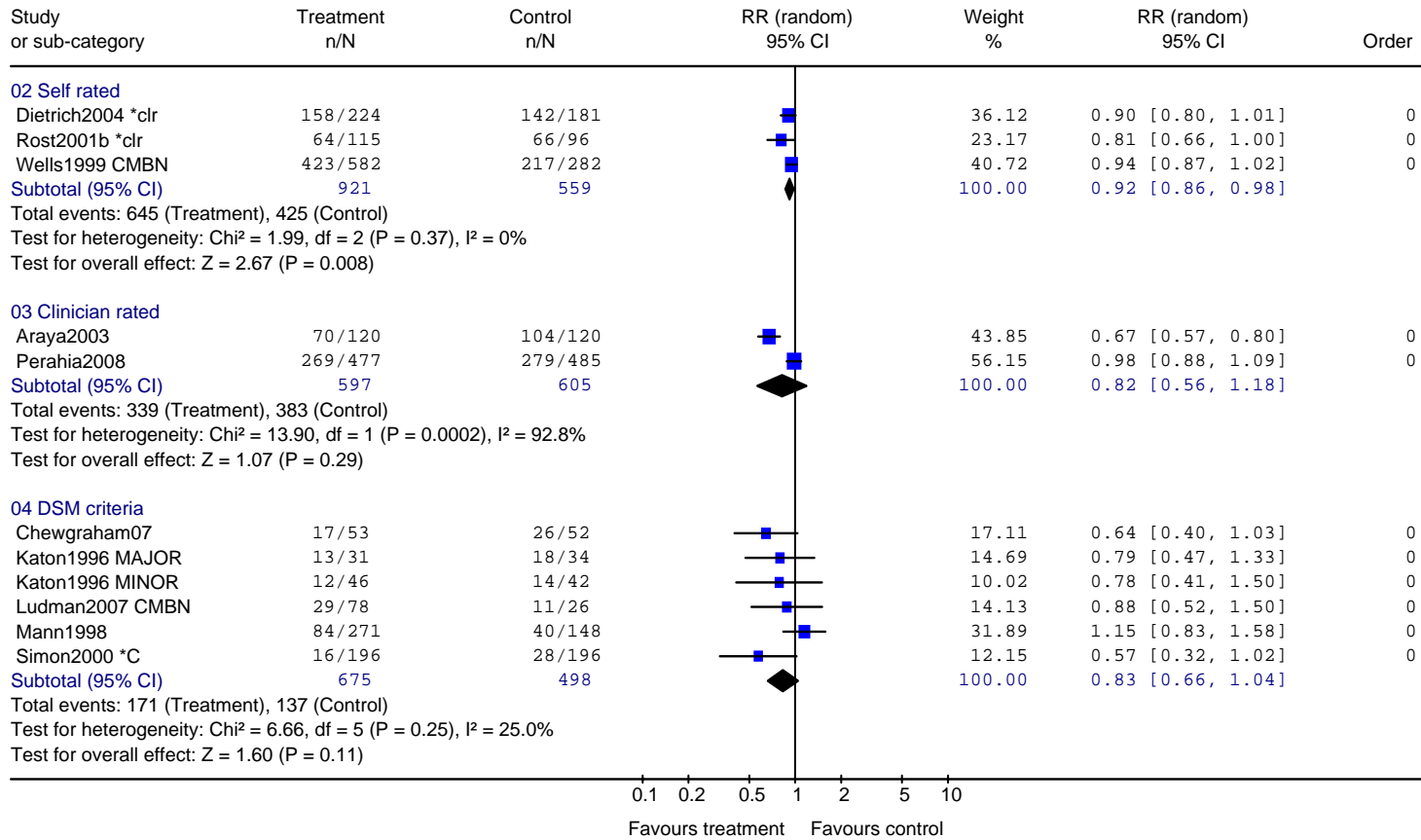
01.02 Non-response at follow-up: 3 months

Review: Depression Update Service: Collaborative Care
 Comparison: 01 Overall Efficacy v usual care - post ICC adjustment
 Outcome: 02 Number not achieving =>50% reduction in outcome score at follow-up: 3 months



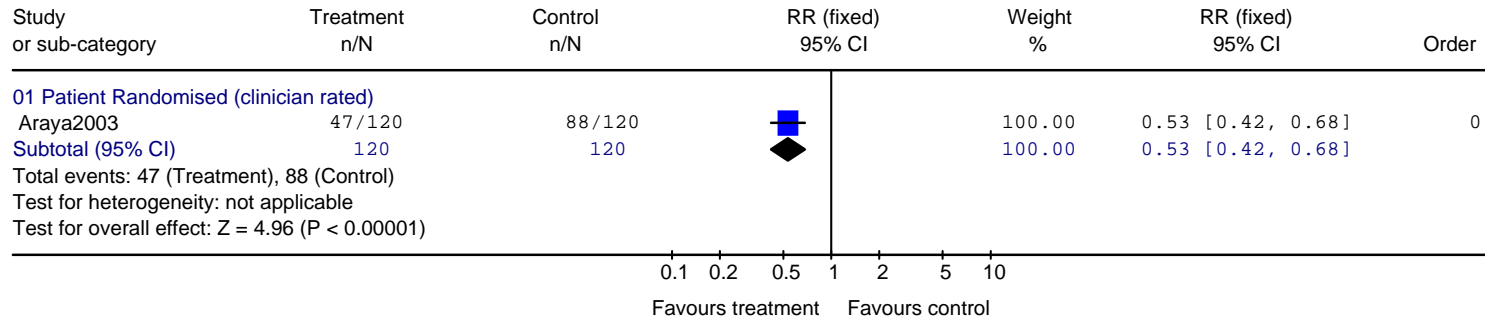
01.03 Non-remission at endpoint

Review: Depression Update Service: Collaborative Care
 Comparison: 01 Overall Efficacy v usual care - post ICC adjustment
 Outcome: 03 Number not achieving remission at endpoint



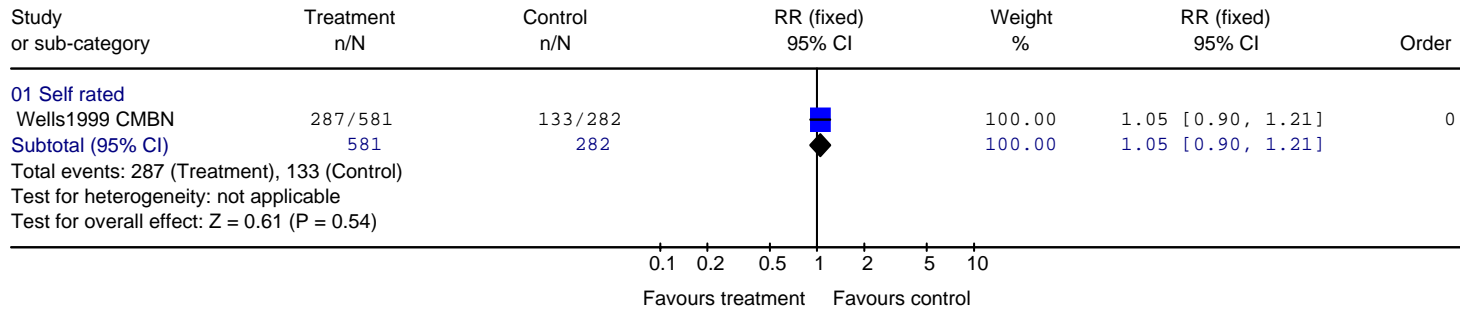
01.04 Non-remission at follow-up: 3 months

Review: Depression Update Service: Collaborative Care
 Comparison: 01 Overall Efficacy v usual care - post ICC adjustment
 Outcome: 04 Number not achieving remission at follow-up: 3 months



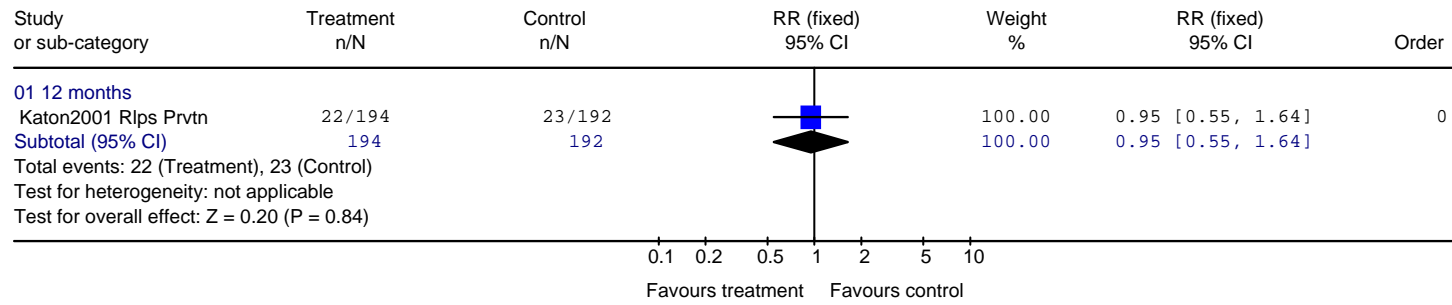
01.05 Non-remission at follow-up: 12 months

Review: Depression Update Service: Collaborative Care
 Comparison: 01 Overall Efficacy v usual care - post ICC adjustment
 Outcome: 05 Number not achieving remission at follow-up: 12 months



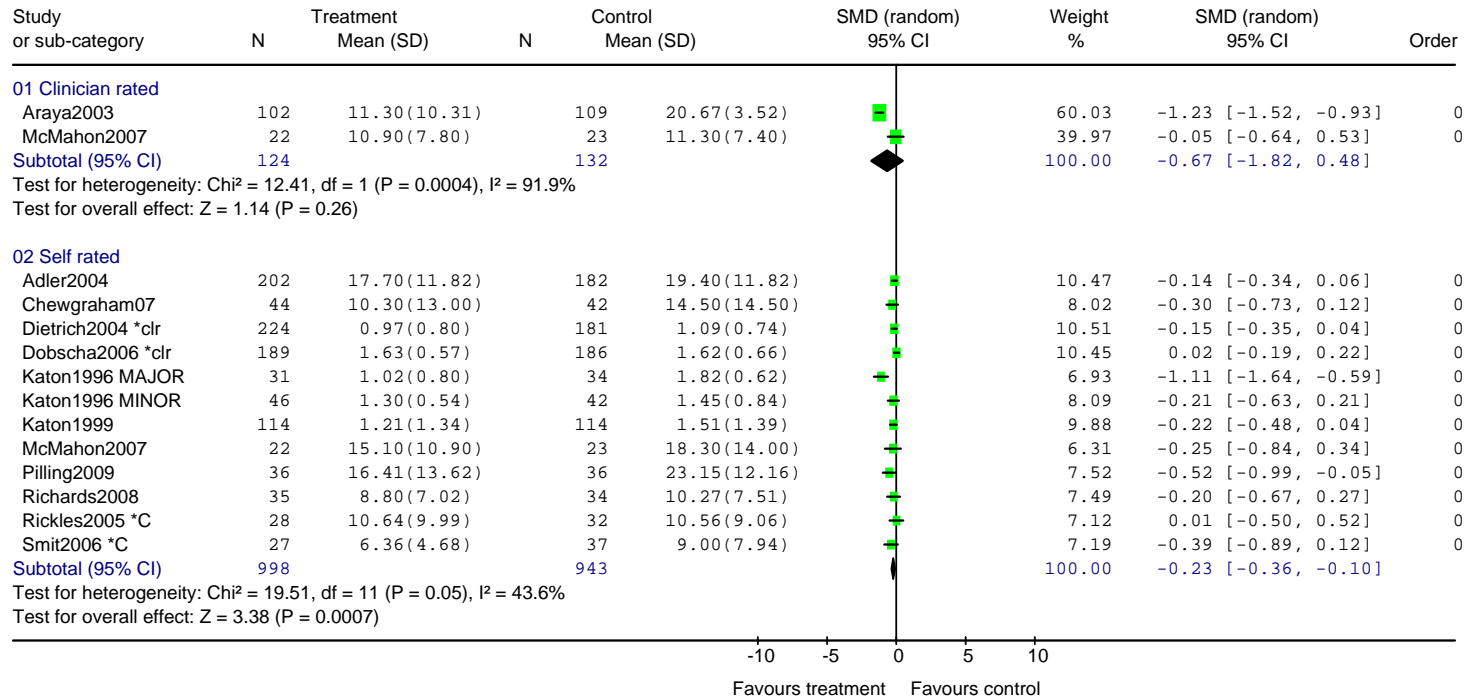
01.06 Relapse at endpoint

Review: Depression Update Service: Collaborative Care
 Comparison: 01 Overall Efficacy v usual care - post ICC adjustment
 Outcome: 06 Relapse Prevention



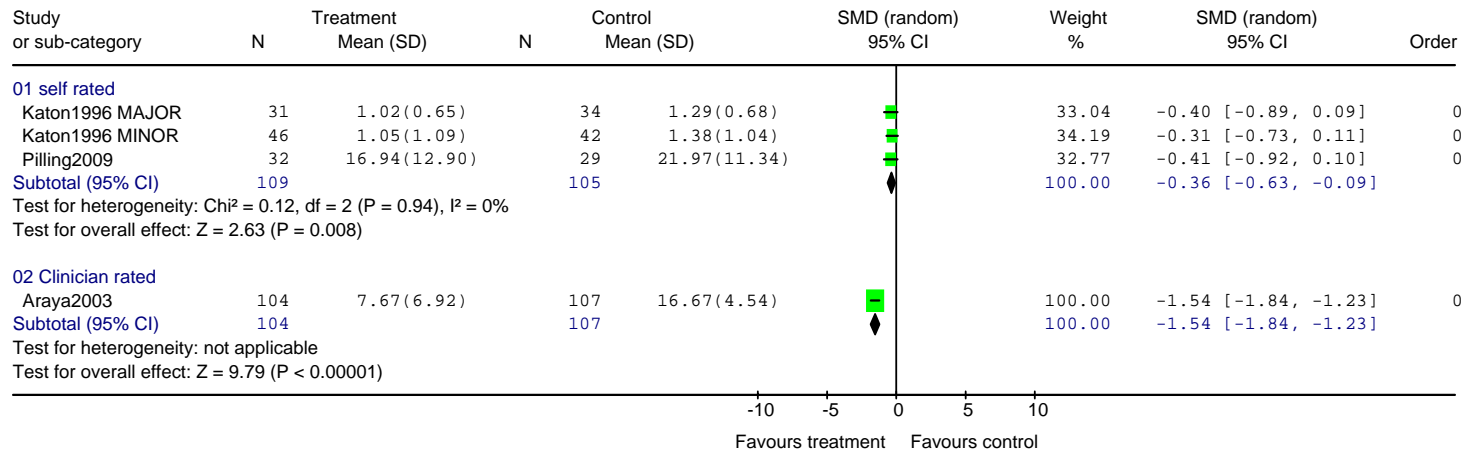
01.07 Mean endpoint (clinician-rated and self-rated)

Review: Depression Update Service: Collaborative Care
 Comparison: 01 Overall Efficacy v usual care - post ICC adjustment
 Outcome: 07 Mean endpoint



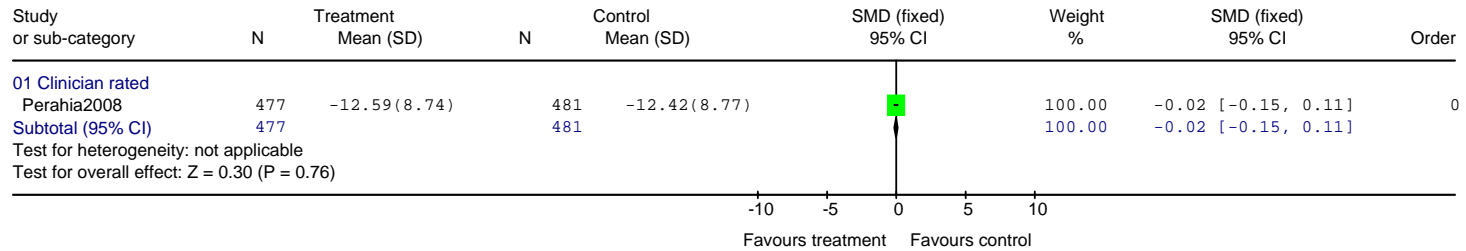
01.08 Mean endpoint (self-rated) at follow-up: 3-4 months

Review: Depression Update Service: Collaborative Care
 Comparison: 01 Overall Efficacy v usual care - post ICC adjustment
 Outcome: 08 Mean endpoint scores at follow-up: 3-4 months



01.09 Mean change at endpoint (clinician rated)

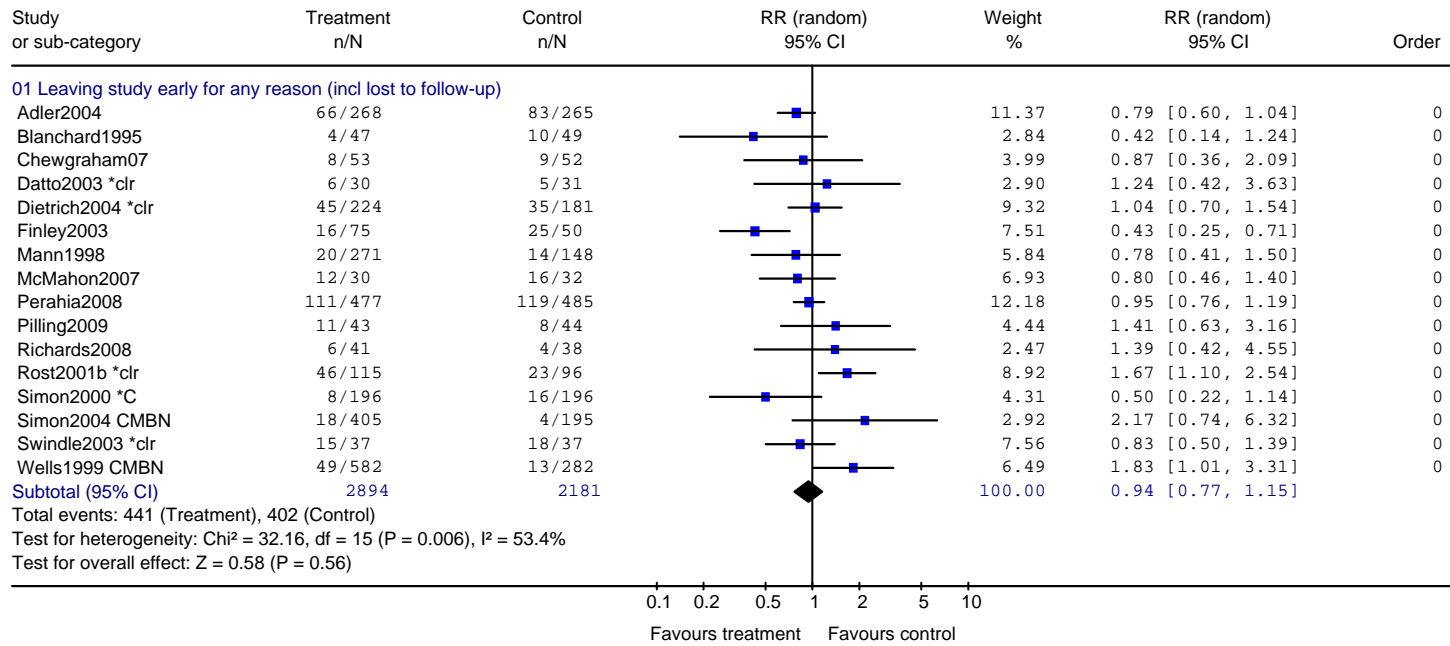
Review: Depression Update Service: Collaborative Care
 Comparison: 01 Overall Efficacy v usual care - post ICC adjustment
 Outcome: 09 Mean change at endpoint



02: Acceptability and tolerability - pre-sensitivity analysis

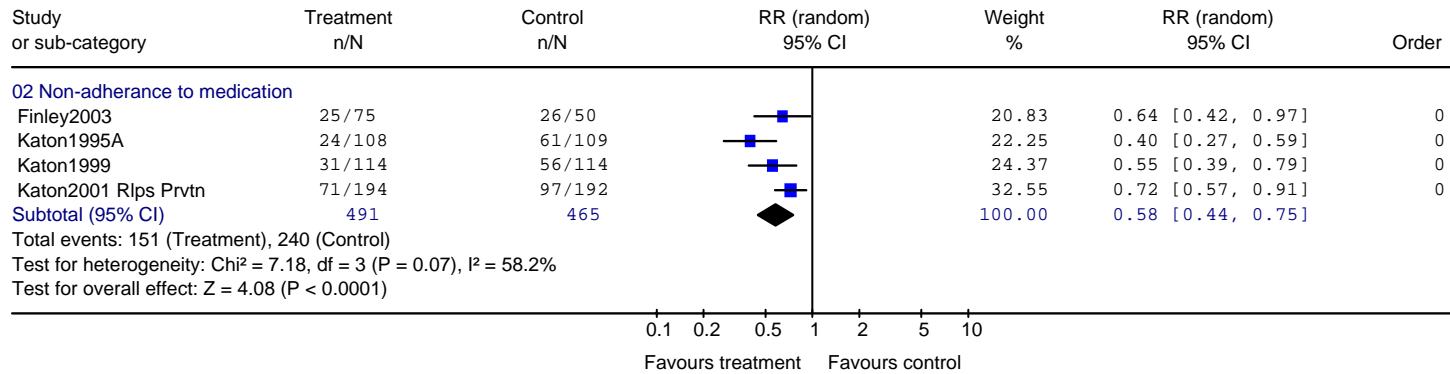
02.01 Dropout at endpoint

Review: Depression Update Service: Collaborative Care
 Comparison: 02 Overall acceptability and tolerability v usual care - post ICC adjustment
 Outcome: 01 Attrition



02.02 Non-adherence to medication at endpoint

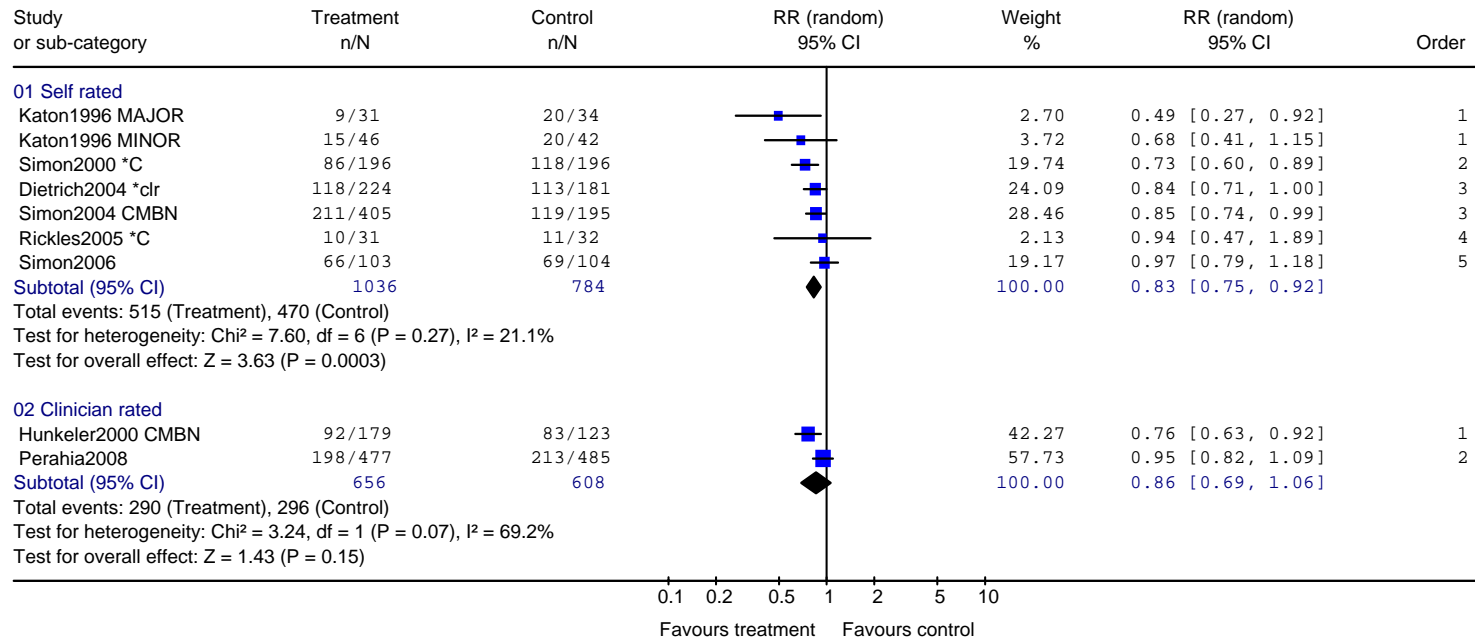
Review: Depression Update Service: Collaborative Care
 Comparison: 02 Overall acceptability and tolerability v usual care - post ICC adjustment
 Outcome: 02 Adherence



03: Efficacy - Sensitivity analysis

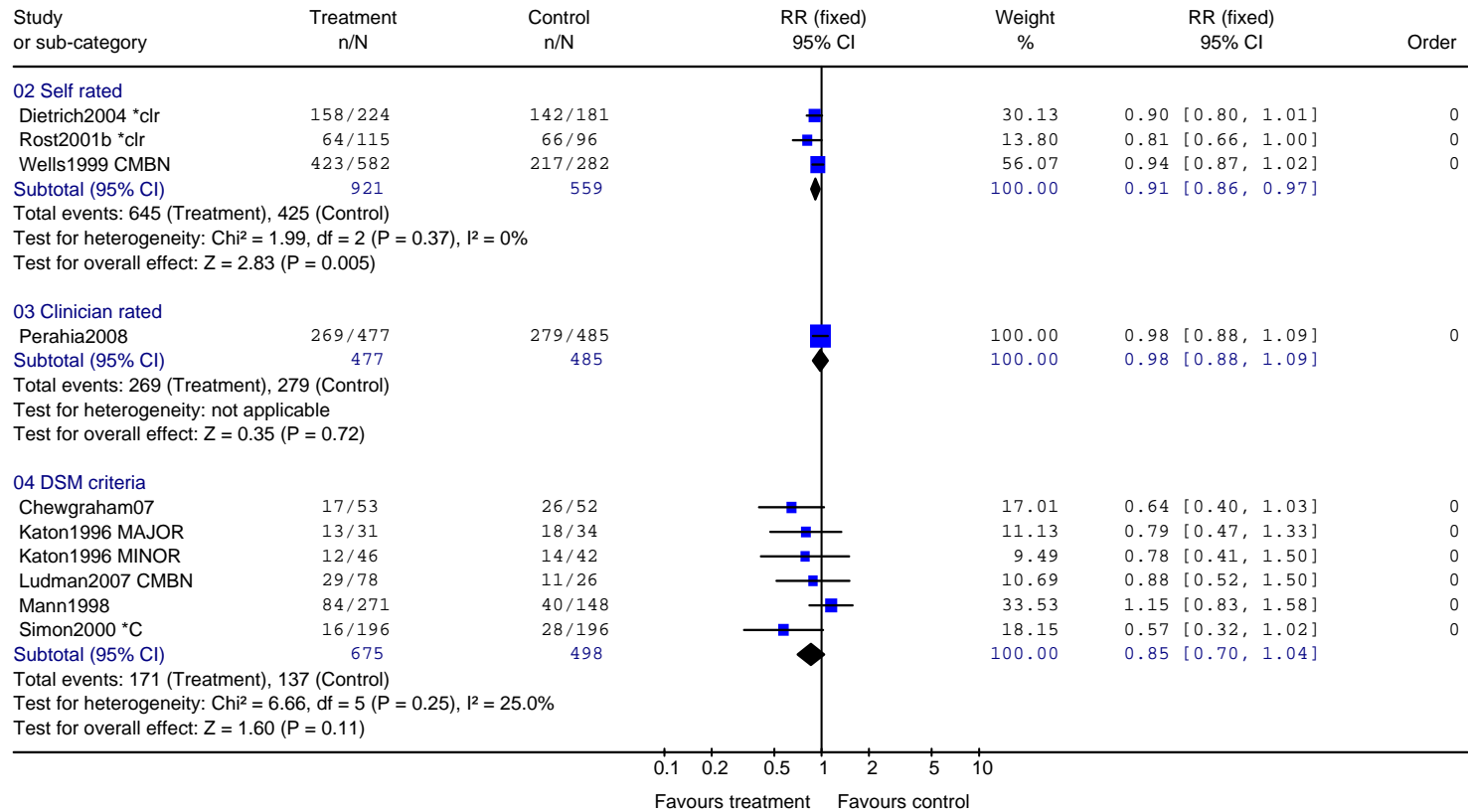
03.01 Non-response at endpoint - ordered by year of publication

Review: Depression Update Service: Collaborative Care
 Comparison: 03 Overall efficacy - sensitivity analysis
 Outcome: 01 Number not achieving =>50% reduction in outcome score at endpoint



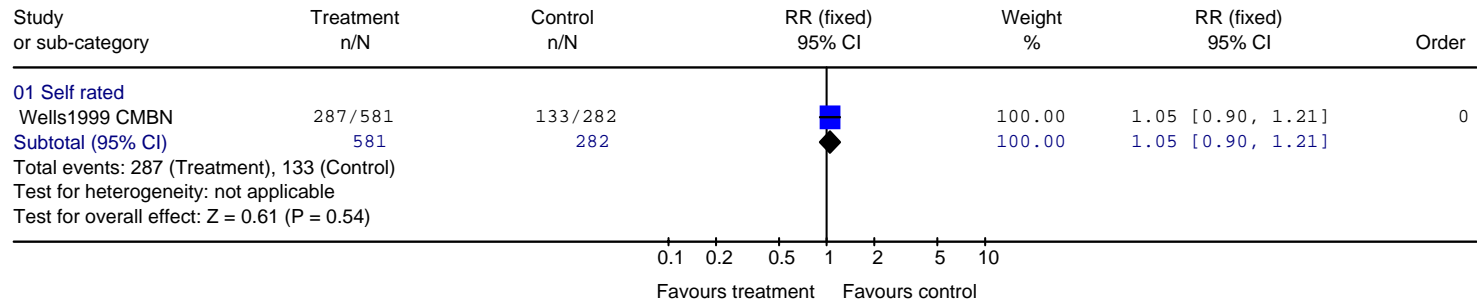
03.02 Non-remission at endpoint

Review: Depression Update Service: Collaborative Care
 Comparison: 03 Overall efficacy - sensitivity analysis
 Outcome: 02 Number not achieving remission at endpoint



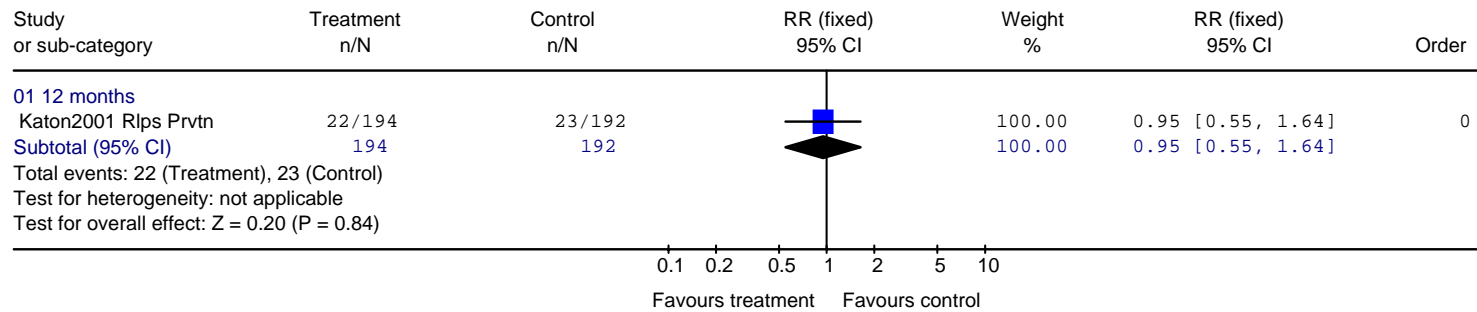
03.03 Non-remission at follow-up: 12 months

Review: Depression Update Service: Collaborative Care
 Comparison: 03 Overall efficacy - sensitivity analysis
 Outcome: 03 Number not achieving remission at follow-up: 12 months



03.04 Relapse at endpoint

Review: Depression Update Service: Collaborative Care
 Comparison: 03 Overall efficacy - sensitivity analysis
 Outcome: 04 Relapse Prevention



03.05 Mean endpoint (clinician-rated and self-rated)

Review: Depression Update Service: Collaborative Care
 Comparison: 03 Overall efficacy - sensitivity analysis
 Outcome: 05 Mean endpoint

