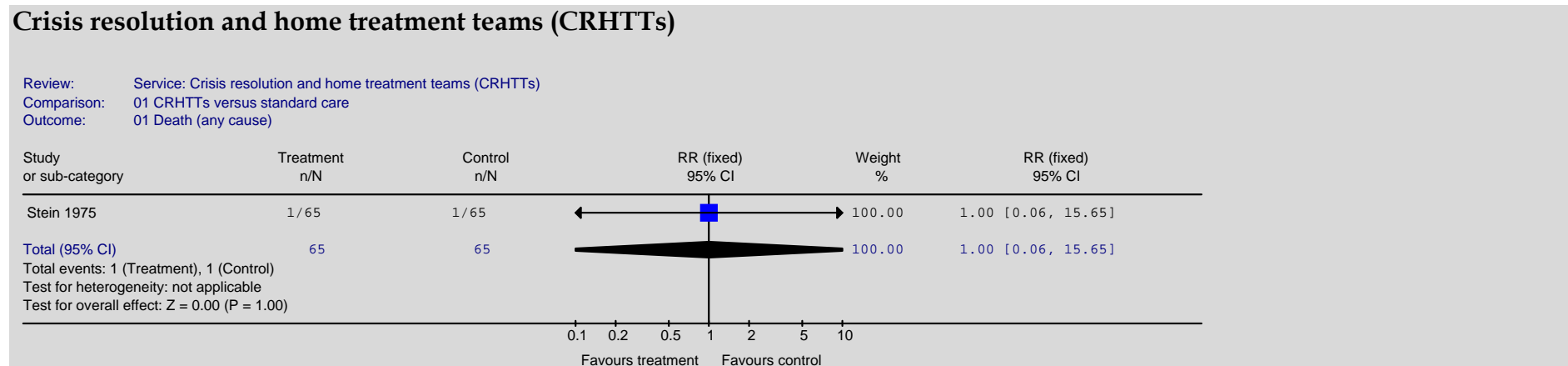
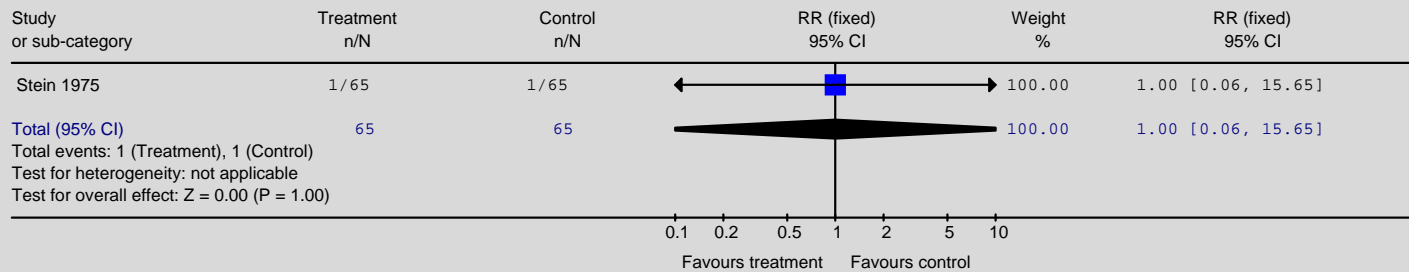


Appendix 19a: Clinical evidence forest plots for service

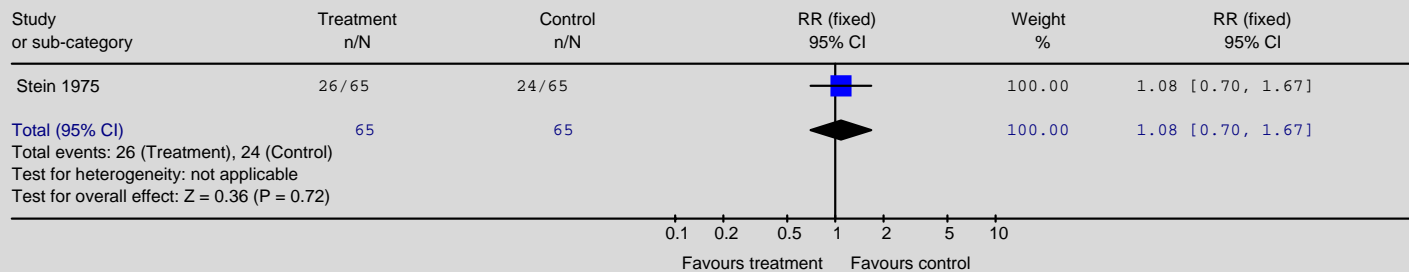
[Crisis resolution and home treatment teams \(CRHTTs\)](#), [Day hospitals](#), [Non-statutory support](#), [Service delivery systems in the treatment and management of depression: collaborative care](#); [Service delivery systems in the treatment and management of depression: medication management](#); [Service delivery systems in the treatment and management of depression: attached professional](#)



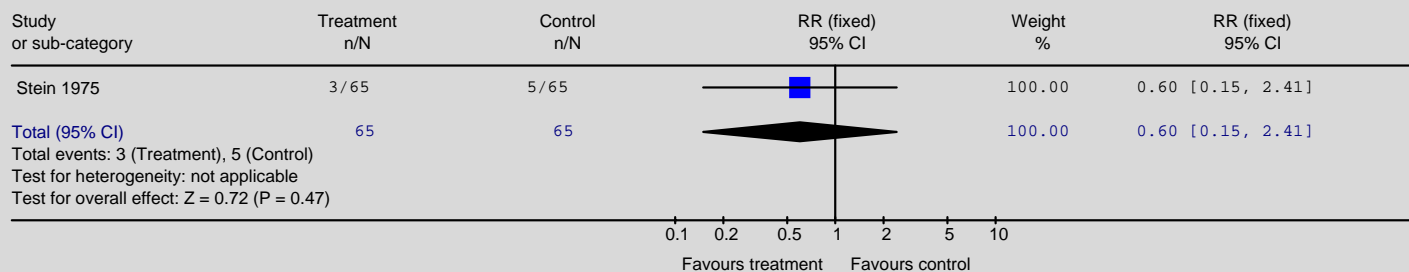
Review: Service: Crisis resolution and home treatment teams (CRHTTs)
 Comparison: 01 CRHTTs versus standard care
 Outcome: 02 Death (suicide or death in suspicious circumstances)



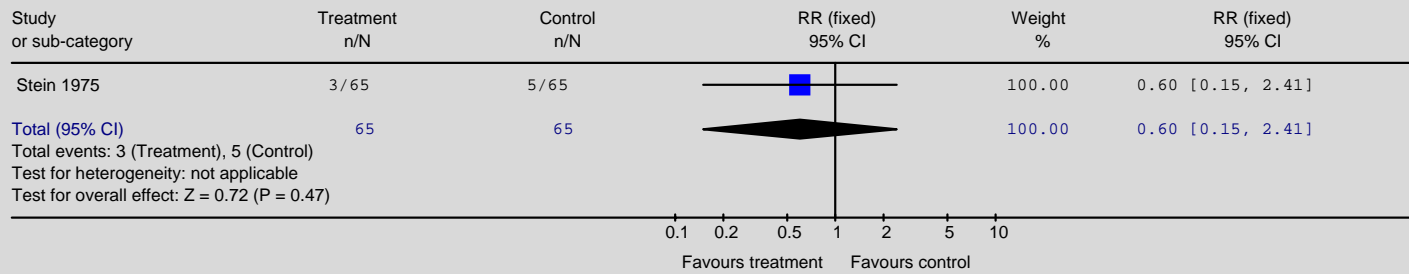
Review: Service: Crisis resolution and home treatment teams (CRHTTs)
 Comparison: 01 CRHTTs versus standard care
 Outcome: 03 Attempted suicide



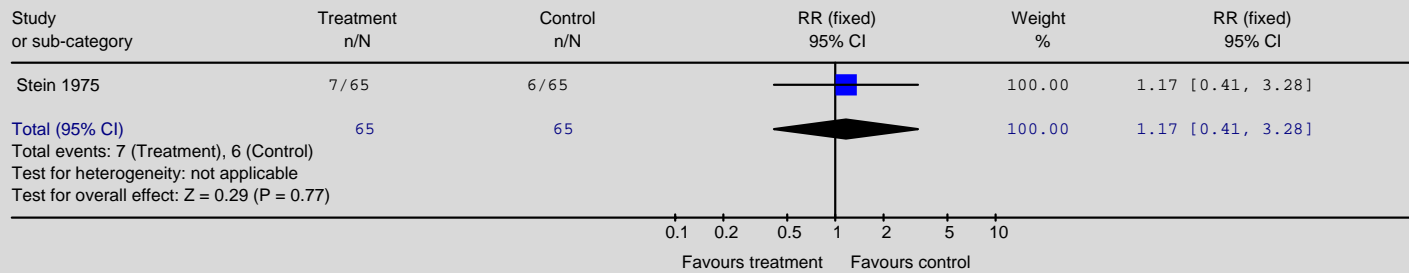
Review: Service: Crisis resolution and home treatment teams (CRHTTs)
 Comparison: 01 CRHTTs versus standard care
 Outcome: 04 Leaving the study early by 6 months

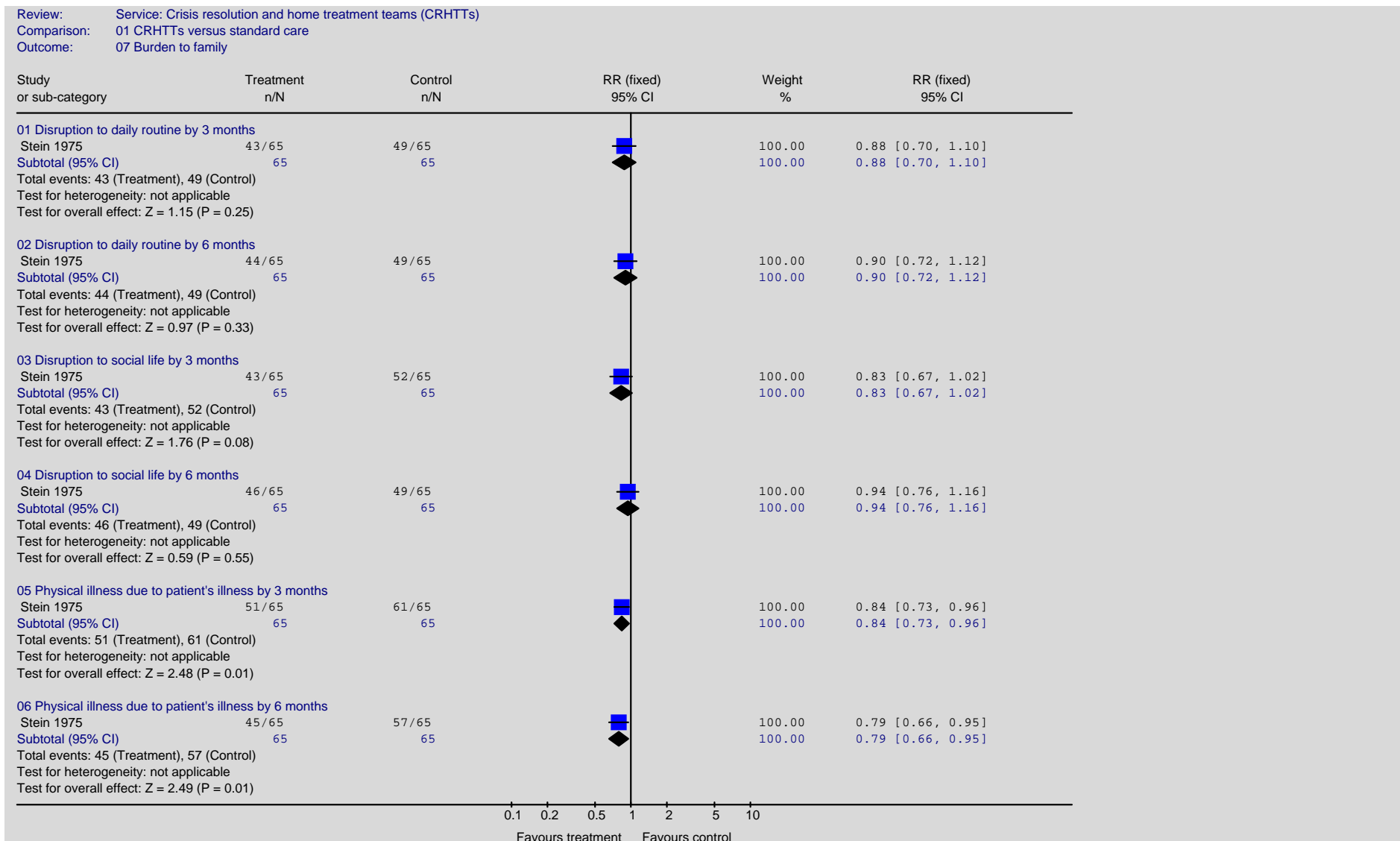


Review: Service: Crisis resolution and home treatment teams (CRHTTs)
 Comparison: 01 CRHTTs versus standard care
 Outcome: 05 Leaving the study early by 12 months

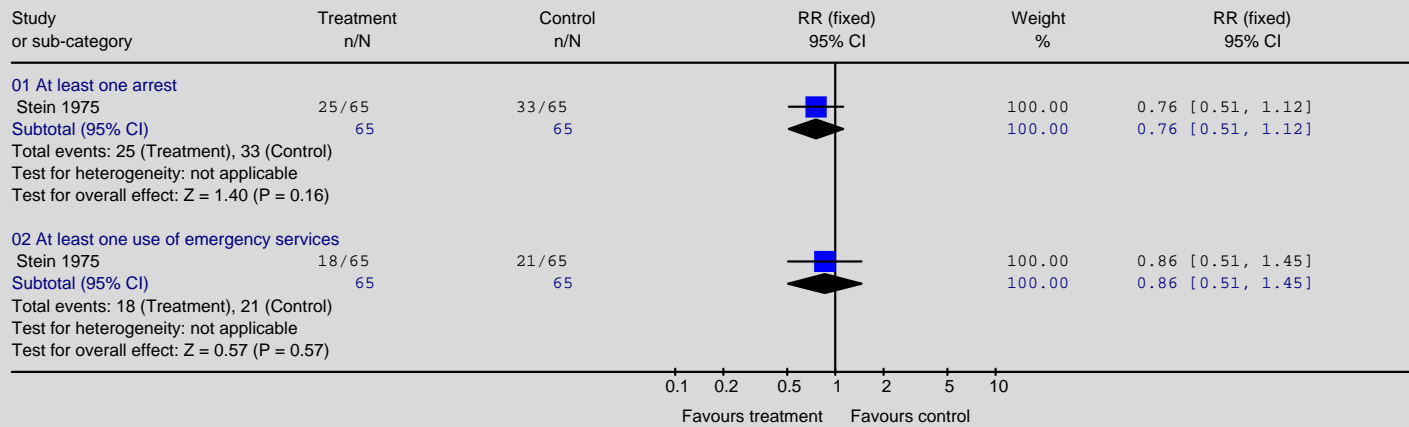


Review: Service: Crisis resolution and home treatment teams (CRHTTs)
 Comparison: 01 CRHTTs versus standard care
 Outcome: 06 Leaving the study early by 20 months



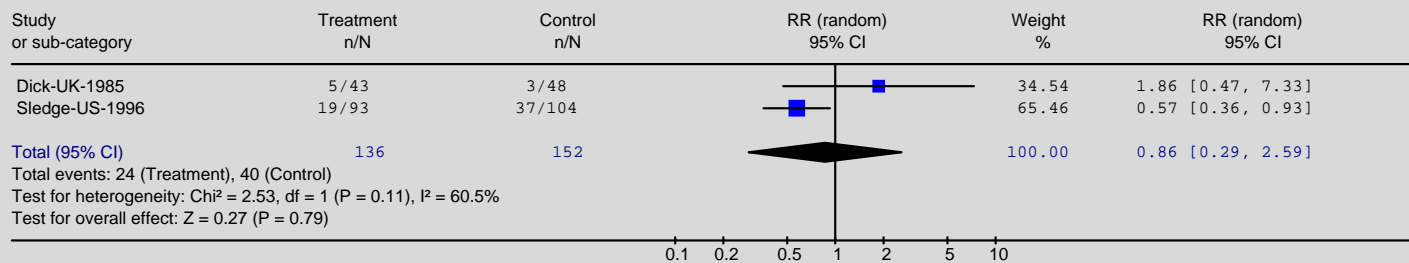


Review: Service: Crisis resolution and home treatment teams (CRHTTs)
 Comparison: 01 CRHTTs versus standard care
 Outcome: 08 Burden to community

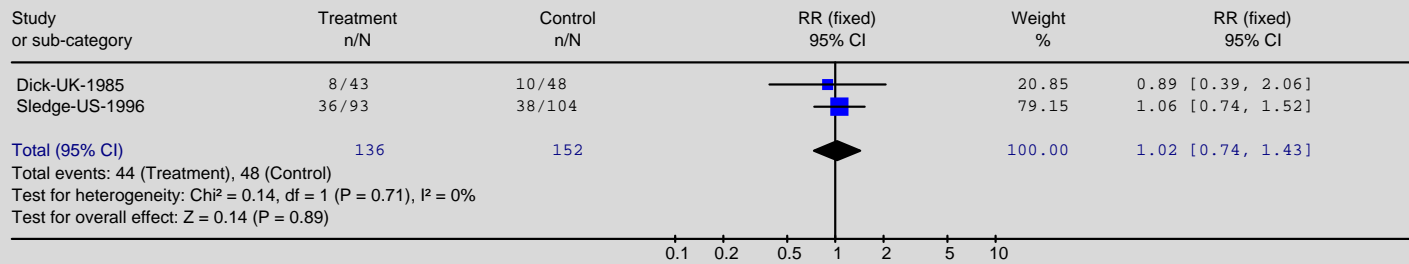


Day hospitals

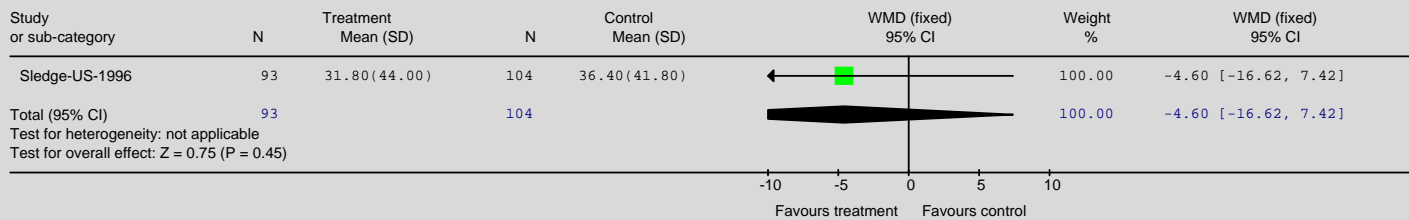
Review: Service: Day hospitals
 Comparison: 01 Day hospital vs Inpatient care Type 1 trials (unsuitable patients excluded before randomisation)
 Outcome: 01 Leaving the study early for any reason



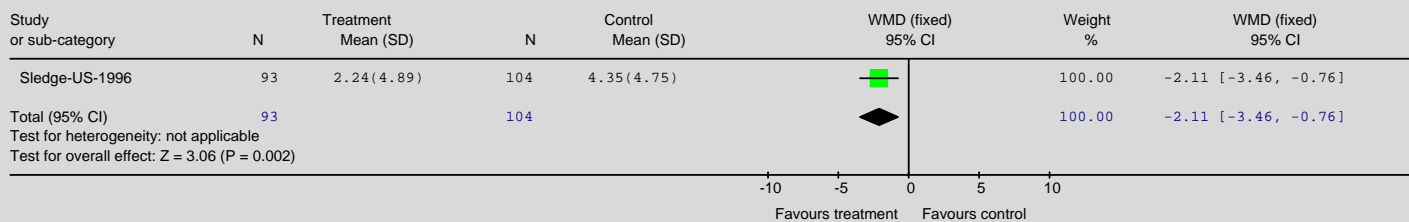
Review: Service: Day hospitals
 Comparison: 01 DP vs IP Type 1 trials (unsuitable patients excluded before randomisation)
 Outcome: 03 Readmitted to IP or DP care after discharge from IP or DP care.

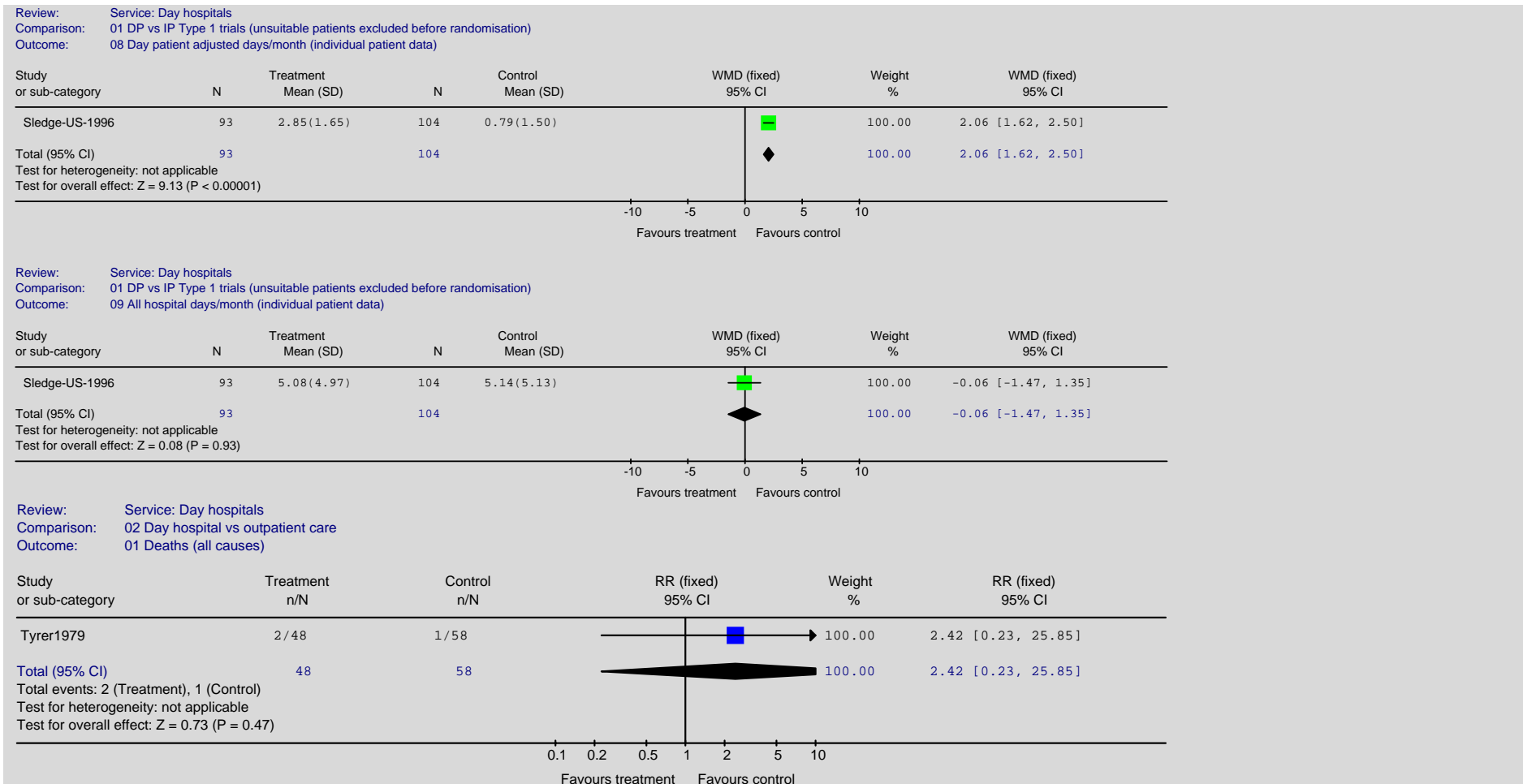


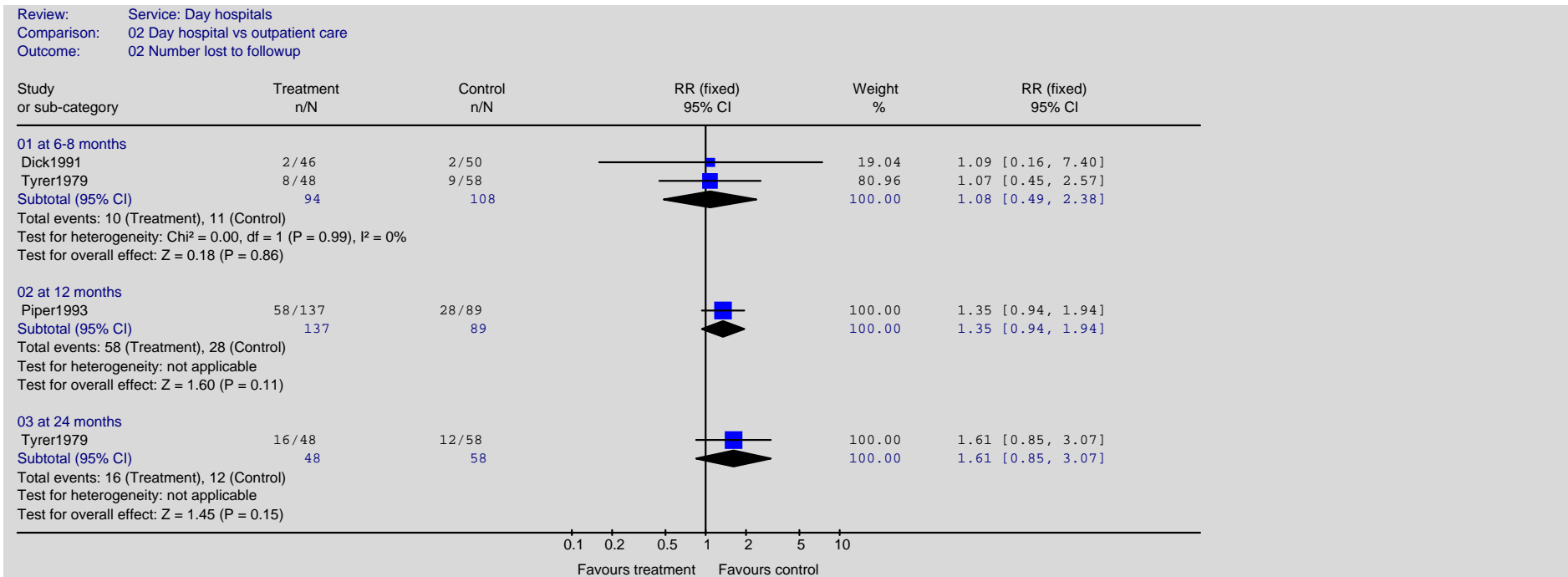
Review: Service: Day hospitals
 Comparison: 01 DP vs IP Type 1 trials (unsuitable patients excluded before randomisation)
 Outcome: 06 Duration of index admission (individual patient data)



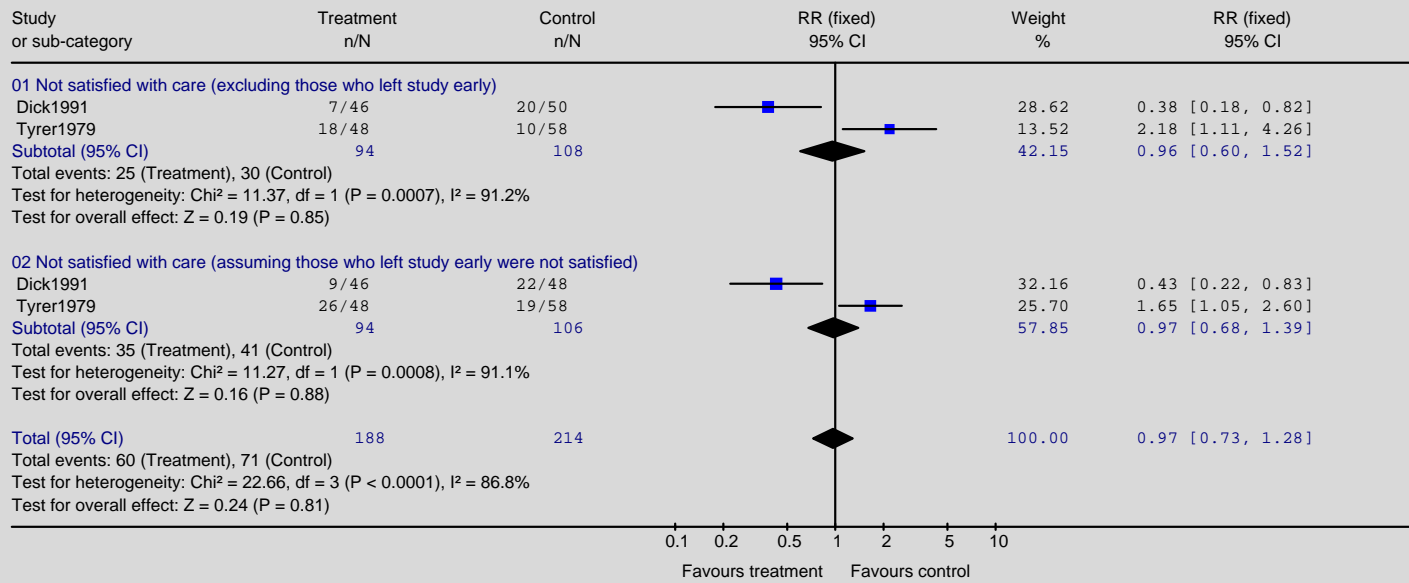
Review: Service: Day hospitals
 Comparison: 01 DP vs IP Type 1 trials (unsuitable patients excluded before randomisation)
 Outcome: 07 Inpatient Days/month (individual patient data)



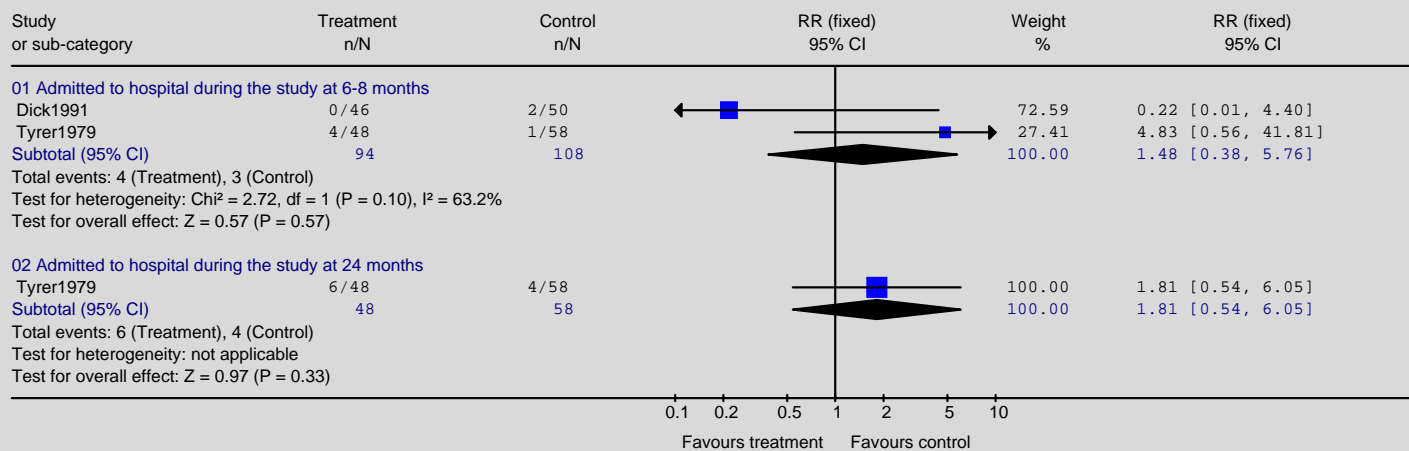


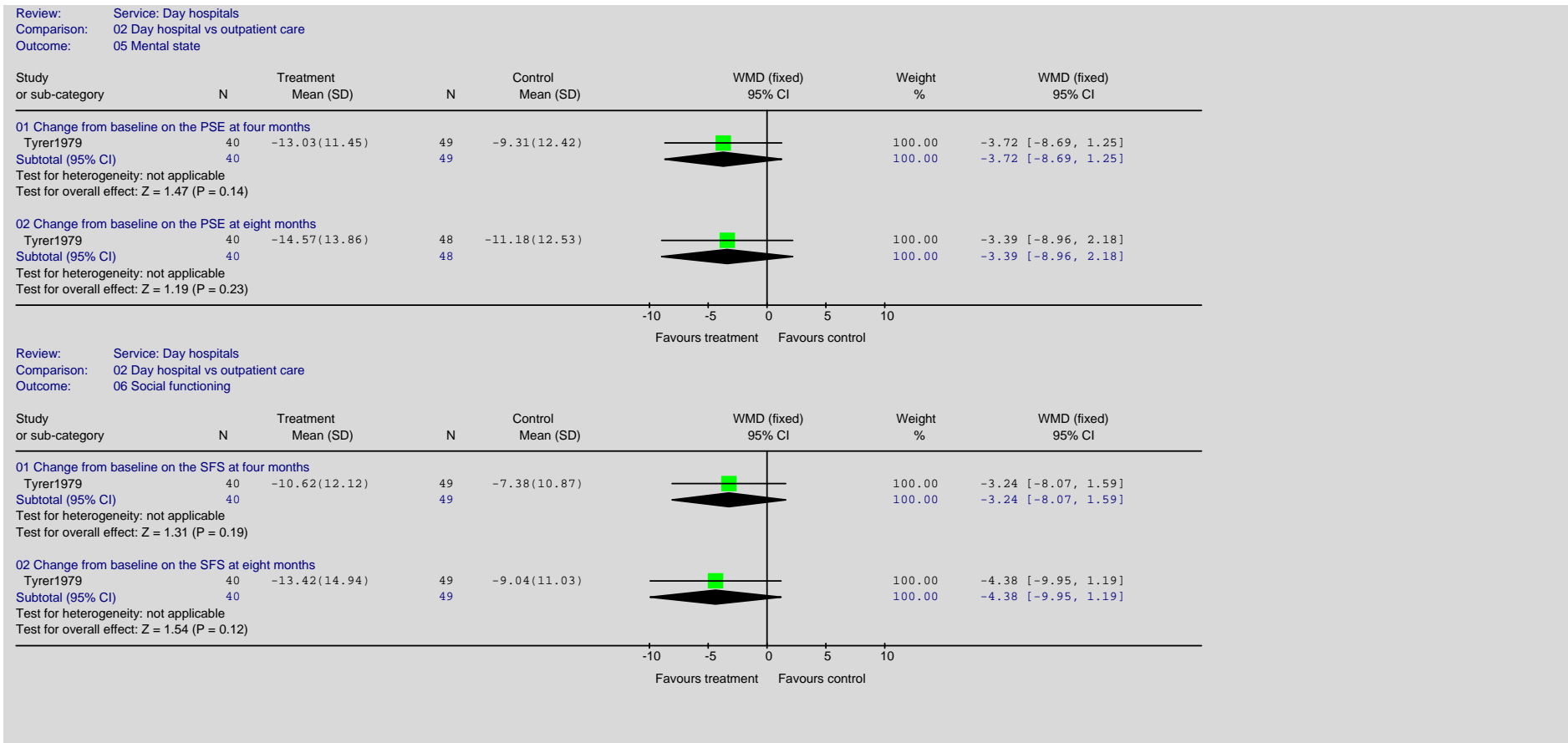


Review: Service: Day hospitals
 Comparison: 02 Day hospital vs outpatient care
 Outcome: 03 Satisfaction with care



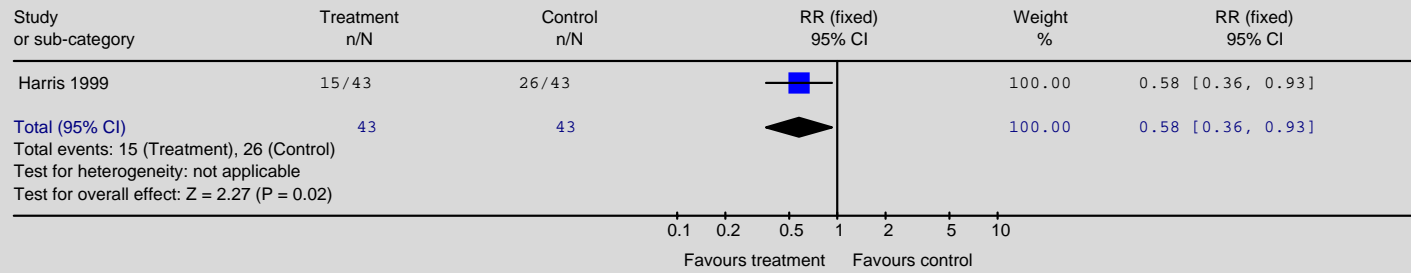
Review: Service: Day hospitals
 Comparison: 02 Day hospital vs outpatient care
 Outcome: 04 Hospital admissions





Non-statutory support

Review: Service: Befriending
 Comparison: 01 Befriending versus wait list control
 Outcome: 01 Non-remitters



Service delivery systems in the treatment and management of depression: collaborative care

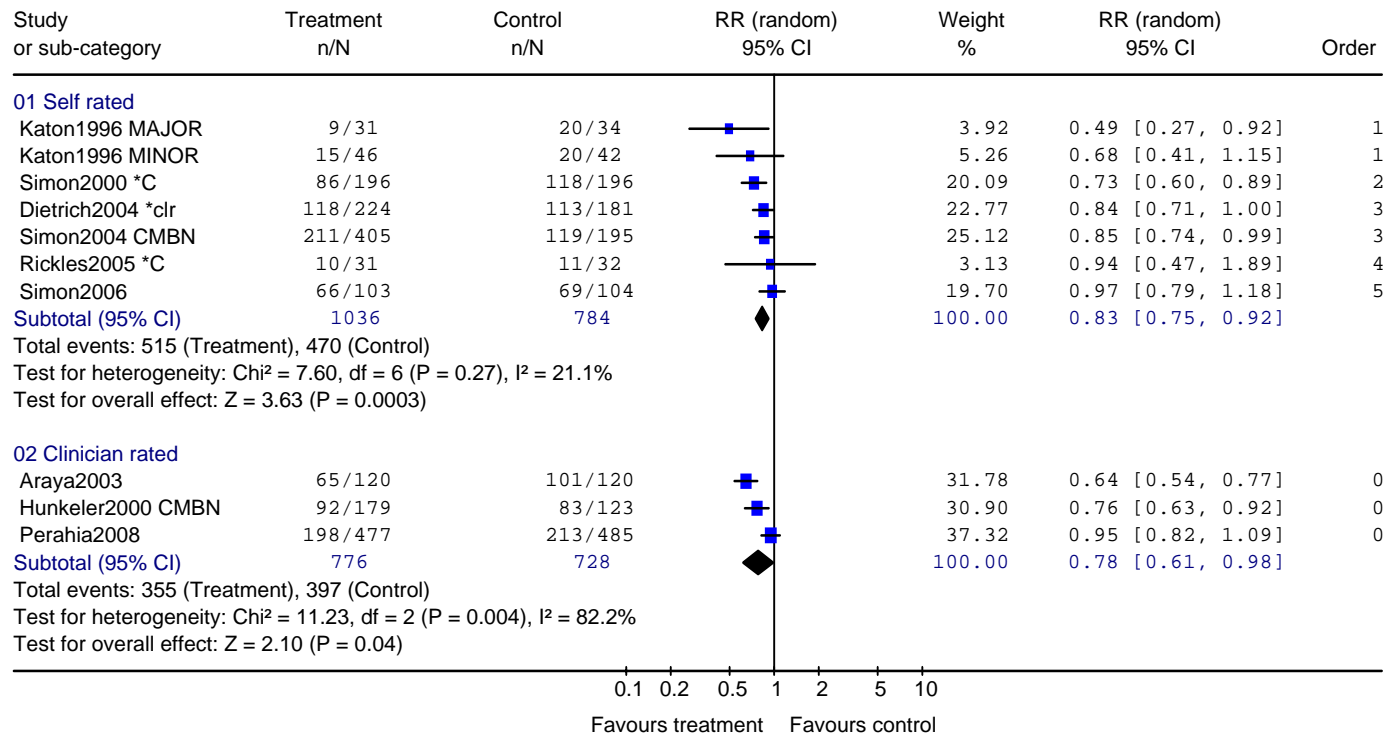
01: Efficacy - pre-sensitivity analysis

01.01 Non-response at endpoint - ordered by year of publication¹

Review: Depression Update Service: Collaborative Care

Comparison: 01 Overall Efficacy v usual care - post ICC adjustment

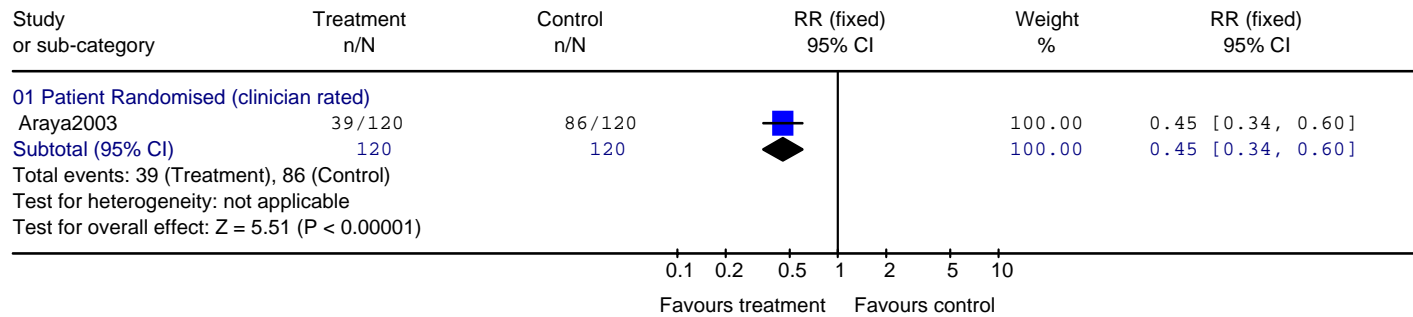
Outcome: 01 Number not achieving =>50% reduction in outcome score at endpoint



¹ MAJOR = major depression arm of study; MINOR = minor depression arm of study; *C = completers analysis; *clr = cluster randomised (adjusted); CMBN = combined arms

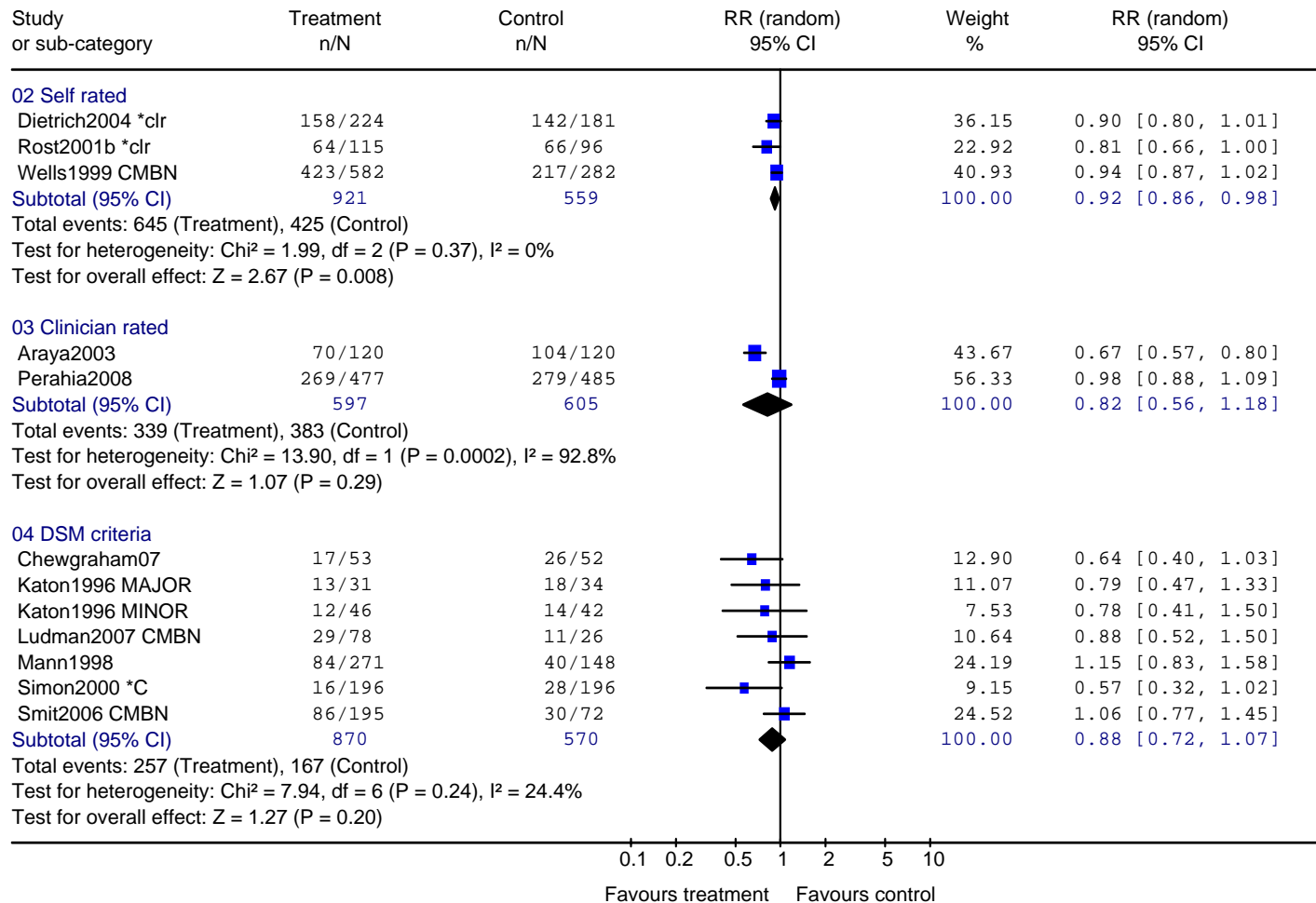
01.02 Non-response at follow-up: 3 months

Review: Depression Update Service: Collaborative Care
 Comparison: 01 Overall Efficacy v usual care - post ICC adjustment
 Outcome: 02 Number not achieving =>50% reduction in outcome score at follow-up: 3 months



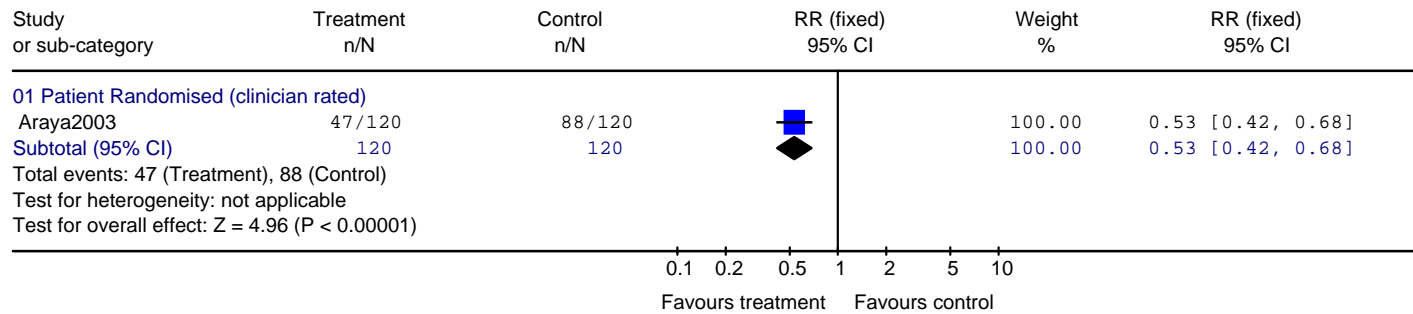
01.03 Non-remission at endpoint

Review: Depression Update Service: Collaborative Care
 Comparison: 01 Overall Efficacy v usual care - post ICC adjustment
 Outcome: 03 Number not achieving remission at endpoint



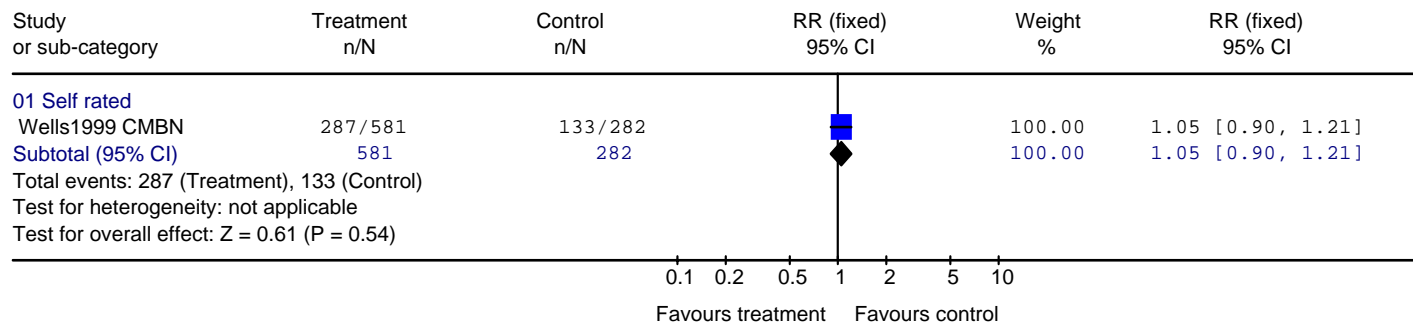
01.04 Non-remission at follow-up: 3 months

Review: Depression Update Service: Collaborative Care
 Comparison: 01 Overall Efficacy v usual care - post ICC adjustment
 Outcome: 04 Number not achieving remission at follow-up: 3 months



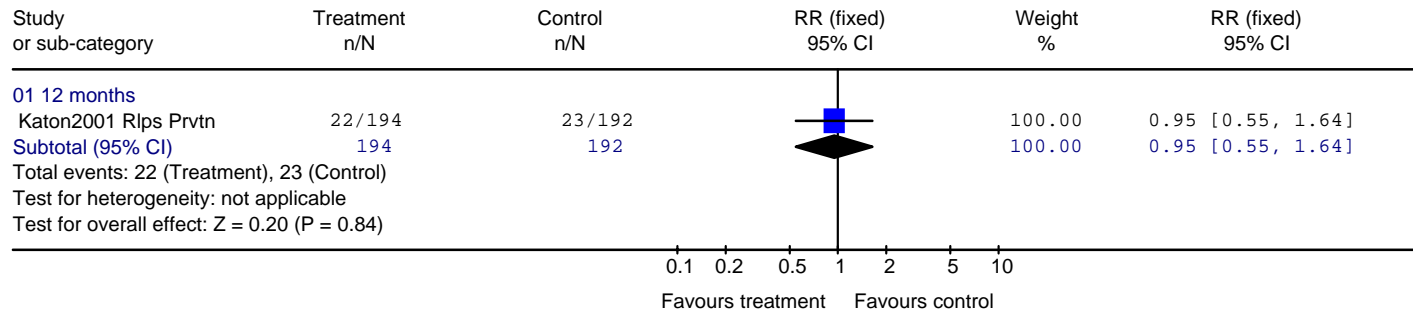
01.05 Non-remission at follow-up: 12 months

Review: Depression Update Service: Collaborative Care
 Comparison: 01 Overall Efficacy v usual care - post ICC adjustment
 Outcome: 05 Number not achieving remission at follow-up: 12 months



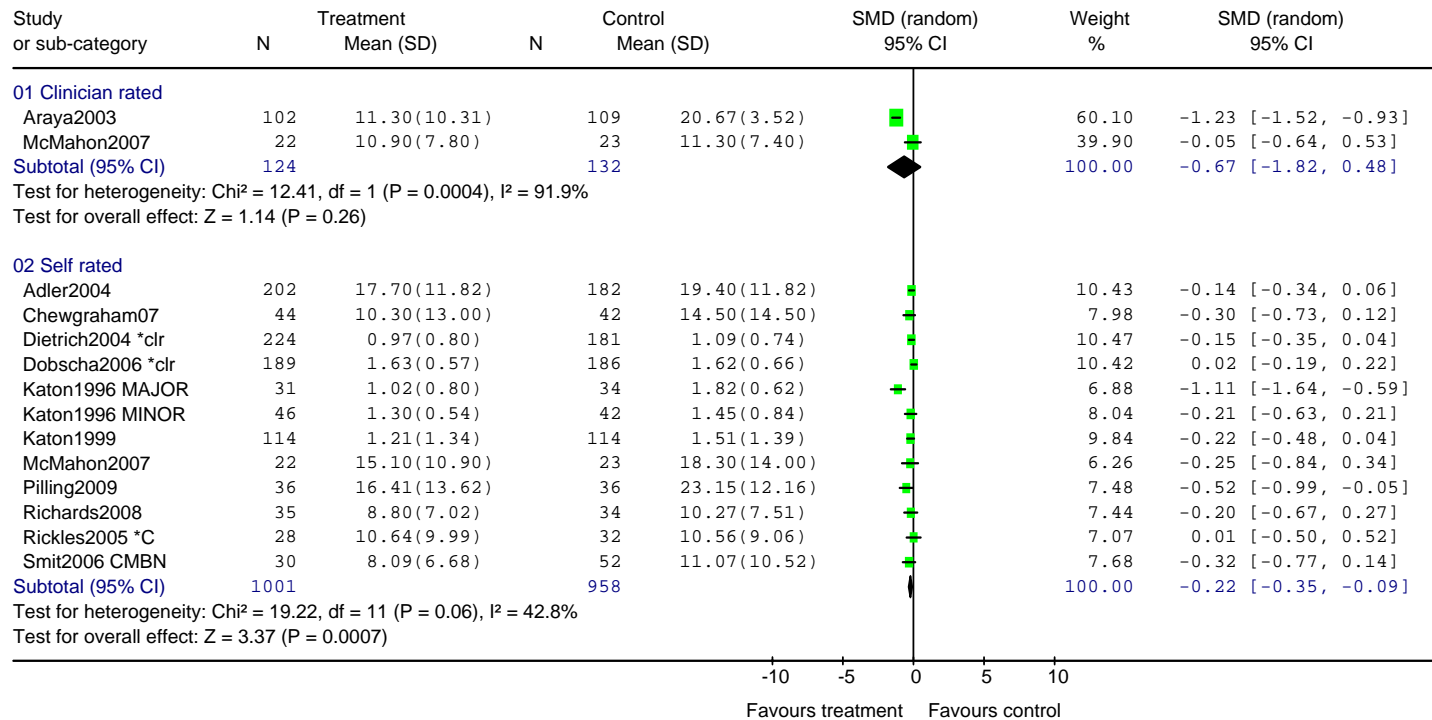
01.06 Relapse at endpoint

Review: Depression Update Service: Collaborative Care
 Comparison: 01 Overall Efficacy v usual care - post ICC adjustment
 Outcome: 06 Relapse Prevention



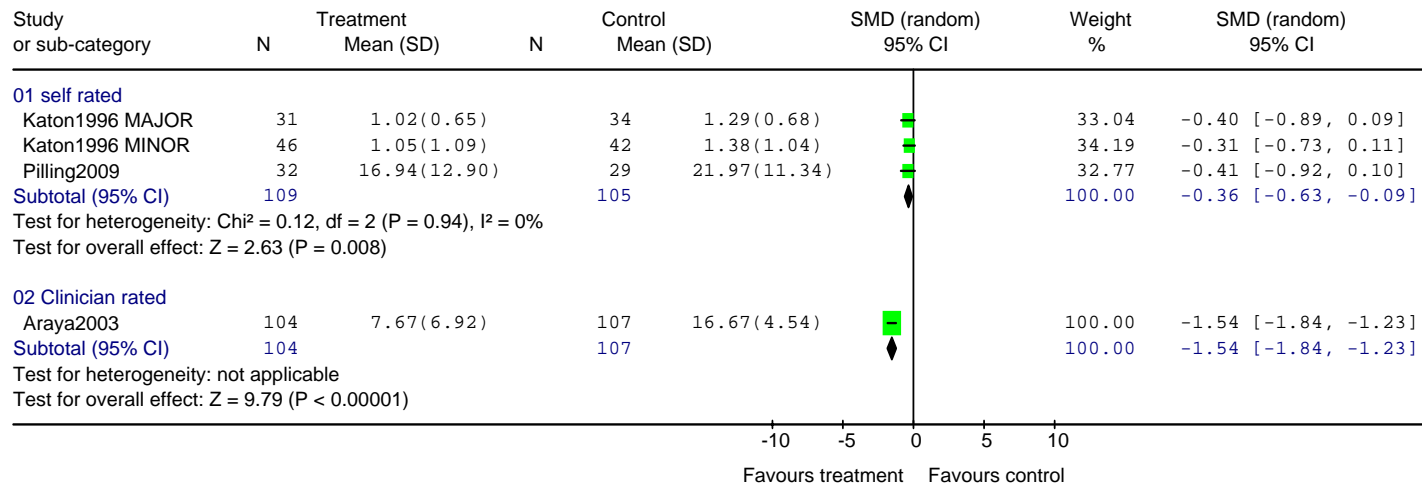
01.07 Mean endpoint (clinician-rated and self-rated)

Review: Depression Update Service: Collaborative Care
 Comparison: 01 Overall Efficacy v usual care - post ICC adjustment
 Outcome: 07 Mean endpoint



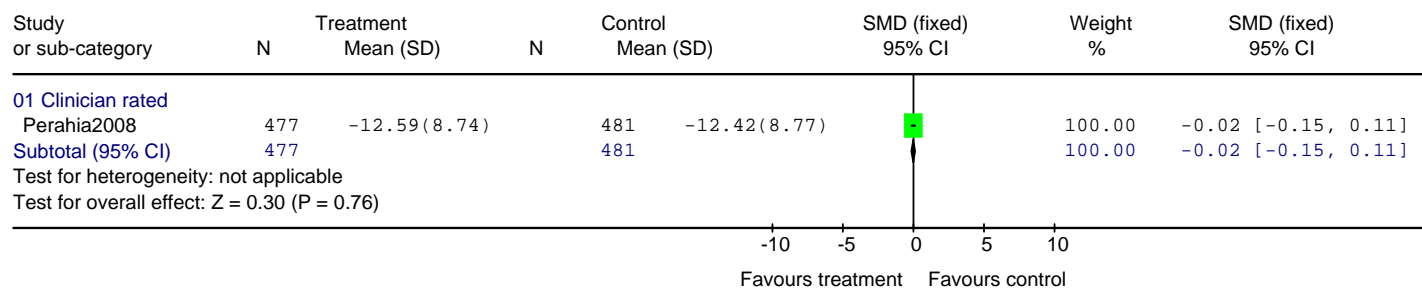
01.08 Mean endpoint (self-rated) at follow-up: 3-4 months

Review: Depression Update Service: Collaborative Care
 Comparison: 01 Overall Efficacy v usual care - post ICC adjustment
 Outcome: 08 Mean endpoint scores at follow-up: 3-4 months



01.09 Mean change at endpoint (clinician rated)

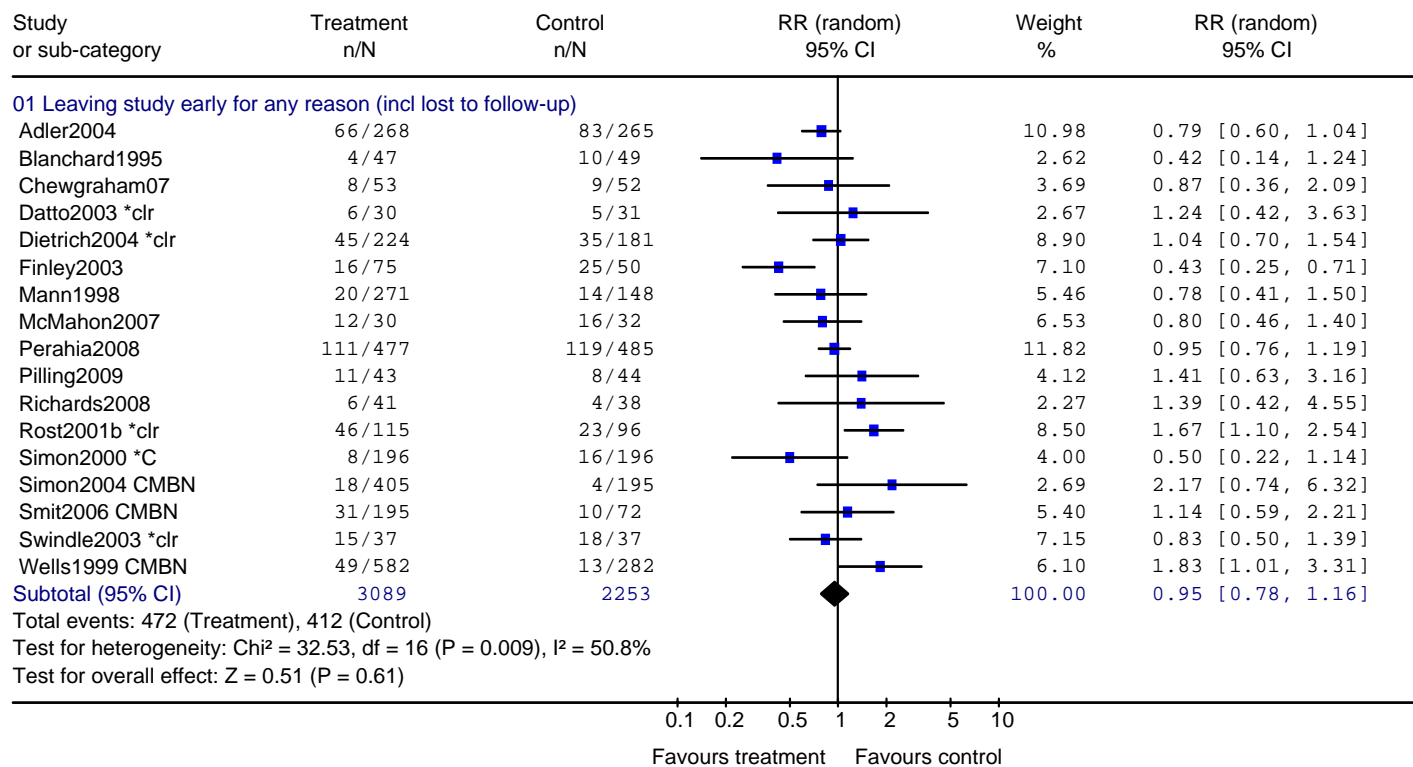
Review: Depression Update Service: Collaborative Care
 Comparison: 01 Overall Efficacy v usual care - post ICC adjustment
 Outcome: 09 Mean change at endpoint



02: Acceptability and tolerability - pre-sensitivity analysis

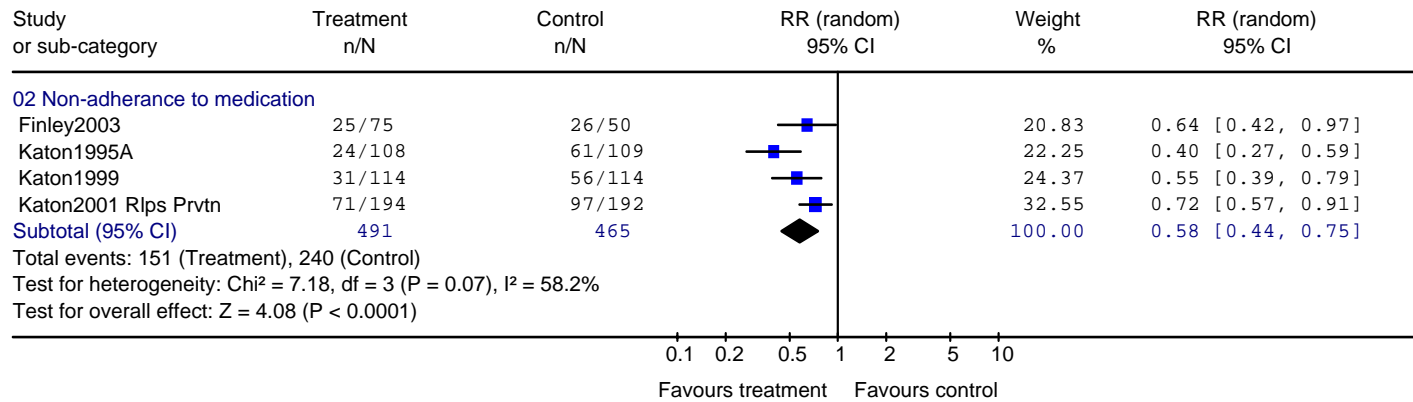
02.01 Dropout at endpoint

Review: Depression Update Service: Collaborative Care
 Comparison: 02 Overall acceptability and tolerability v usual care - post ICC adjustment
 Outcome: 01 Attrition



02.02 Non-adherence to medication at endpoint

Review: Depression Update Service: Collaborative Care
 Comparison: 02 Overall acceptability and tolerability v usual care - post ICC adjustment
 Outcome: 02 Adherence



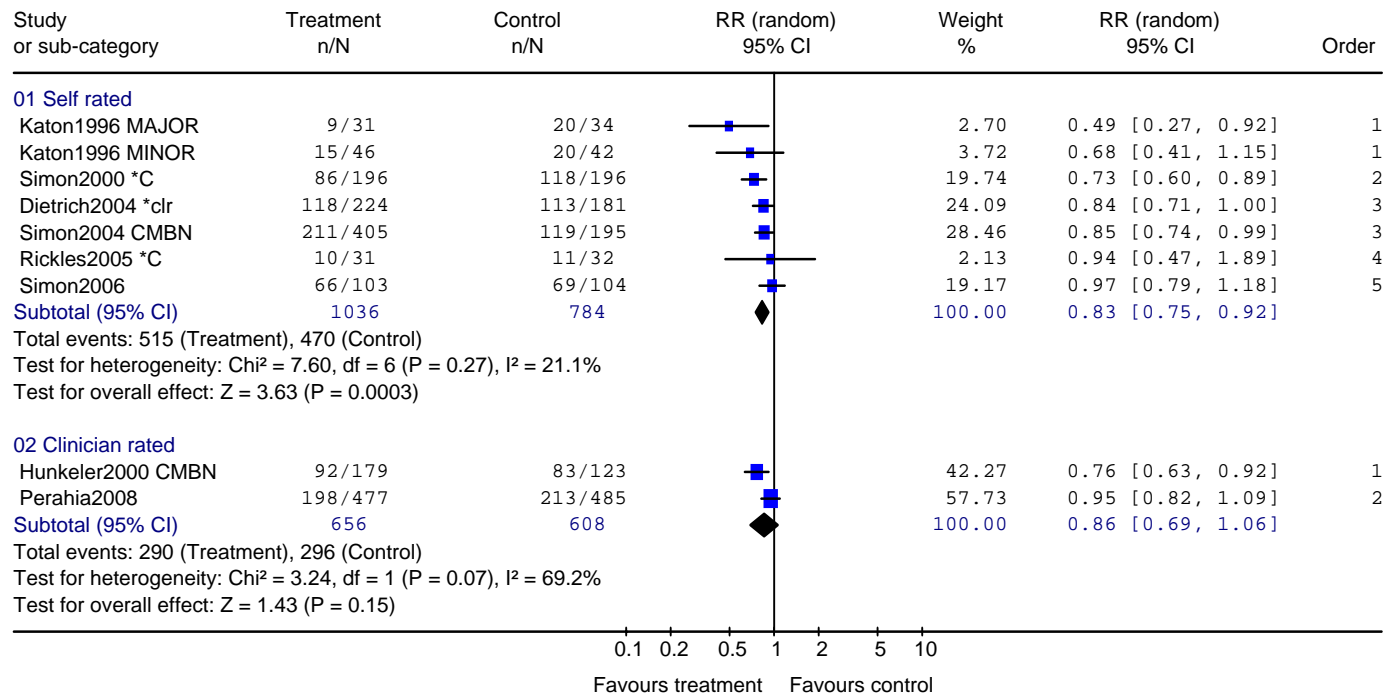
03: Efficacy - Sensitivity analysis

03.01 Non-response at endpoint - ordered by year of publication

Review: Depression Update Service: Collaborative Care

Comparison: 03 Overall efficacy - sensitivity analysis

Outcome: 01 Number not achieving =>50% reduction in outcome score at endpoint

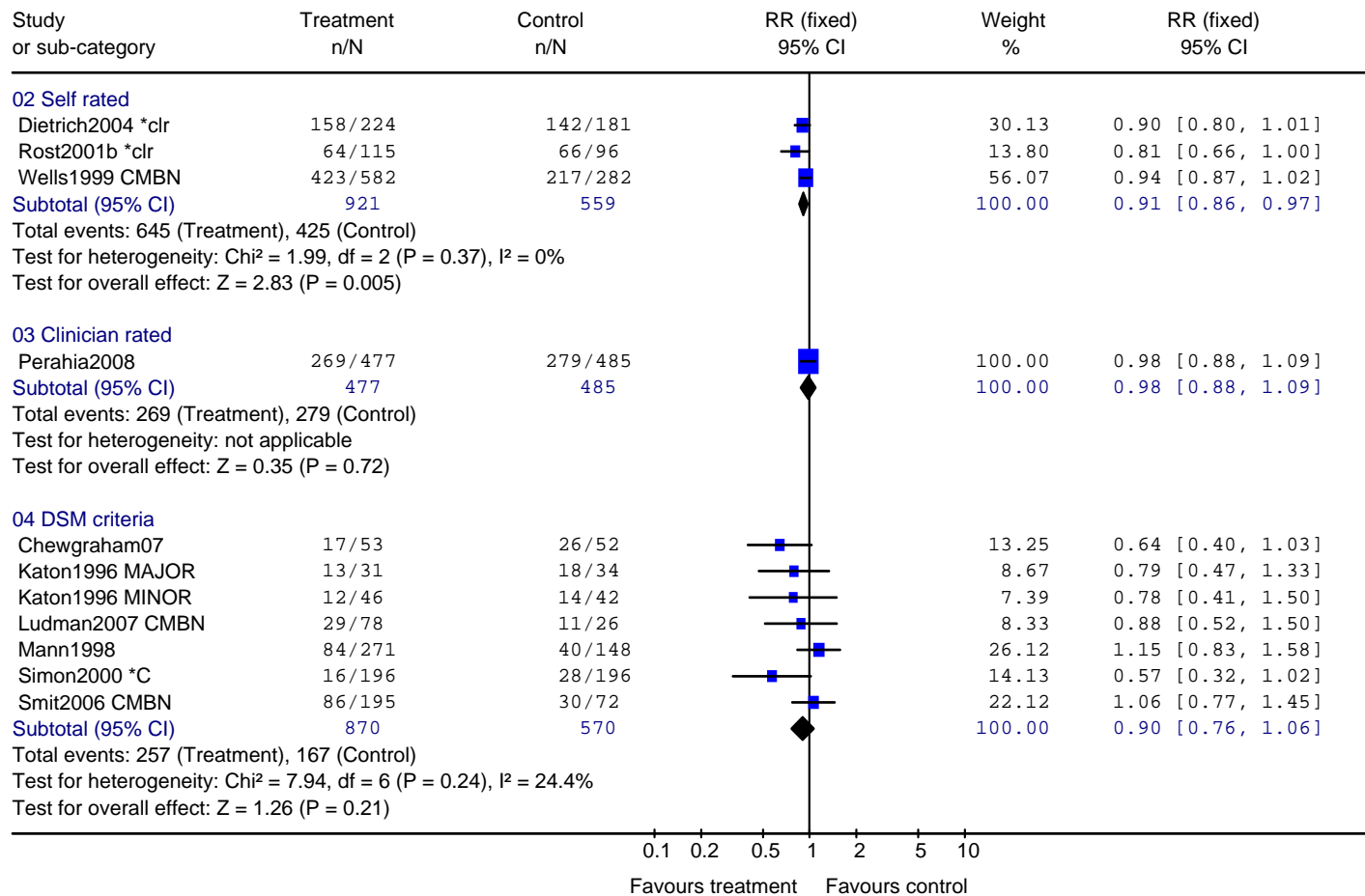


03.02 Non-remission at endpoint

Review: Depression Update Service: Collaborative Care

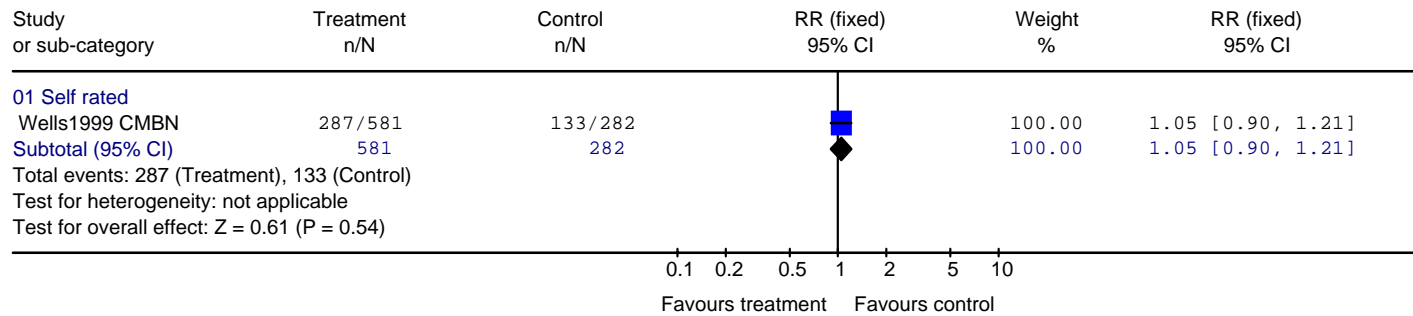
Comparison: 03 Overall efficacy - sensitivity analysis

Outcome: 02 Number not achieving remission at endpoint



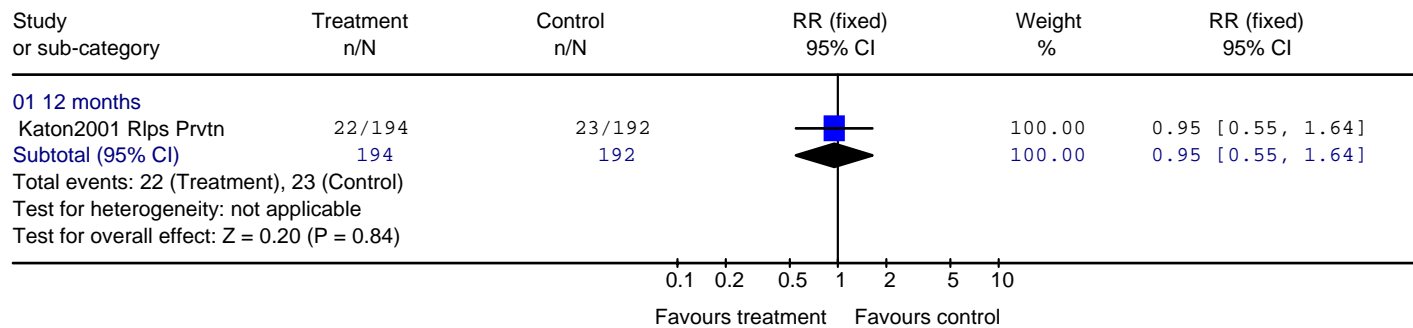
03.03 Non-remission at follow-up: 12 months

Review: Depression Update Service: Collaborative Care
 Comparison: 03 Overall efficacy - sensitivity analysis
 Outcome: 03 Number not achieving remission at follow-up: 12 months



03.04 Relapse at endpoint

Review: Depression Update Service: Collaborative Care
 Comparison: 03 Overall efficacy - sensitivity analysis
 Outcome: 04 Relapse Prevention

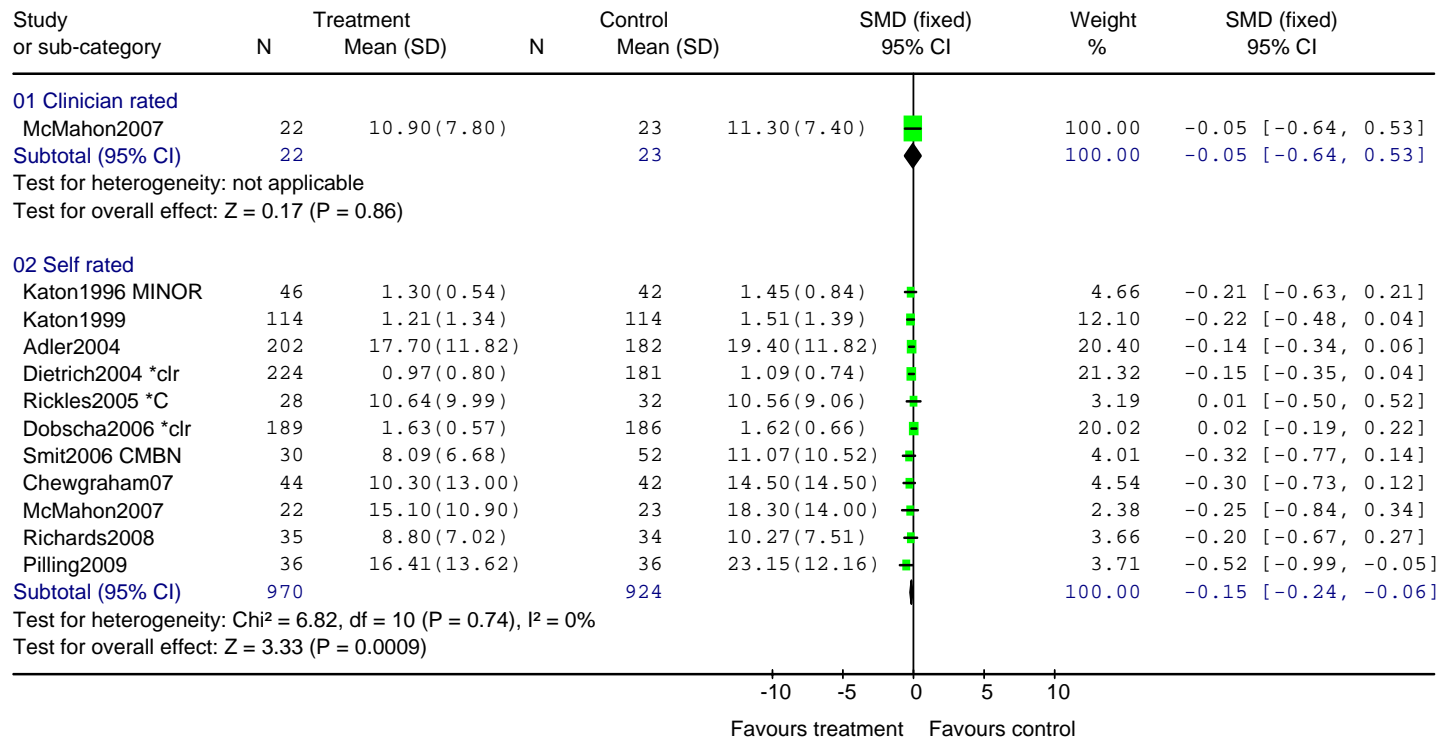


03.05 Mean endpoint (clinician-rated and self-rated)

Review: Depression Update Service: Collaborative Care

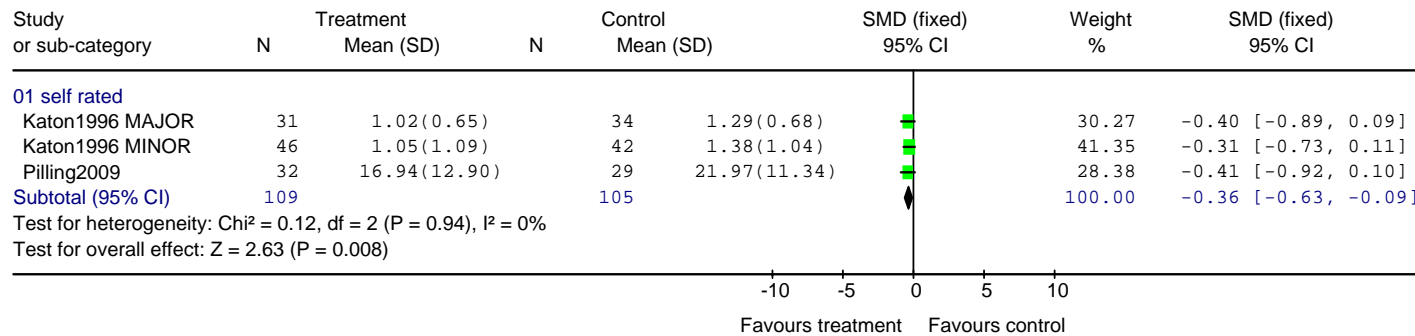
Comparison 03 Overall efficacy - sensitivity analysis

Outcome: 05 Mean endpoint



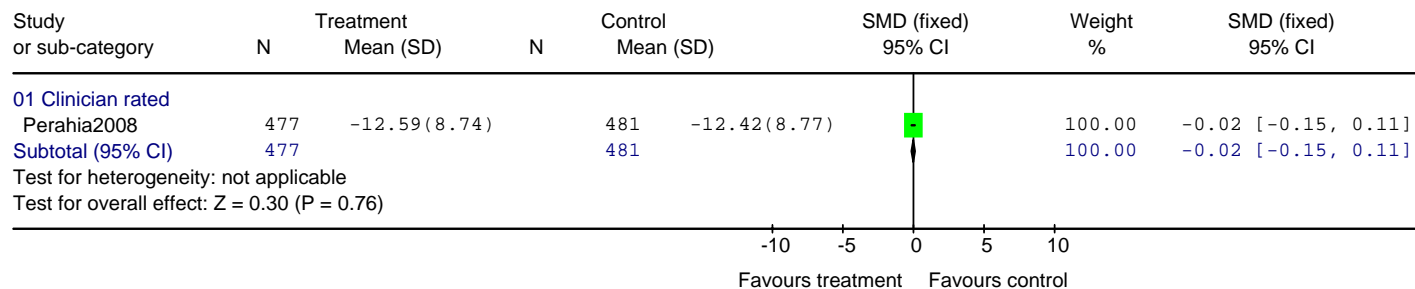
03.06 Mean endpoint (self-rated) at follow-up: 3-4 months

Review: Depression Update Service: Collaborative Care
 Comparison: 03 Overall efficacy - sensitivity analysis
 Outcome: 06 Mean endpoint scores (self-rated) at follow-up: 3-4 months



03.07 Mean change at endpoint

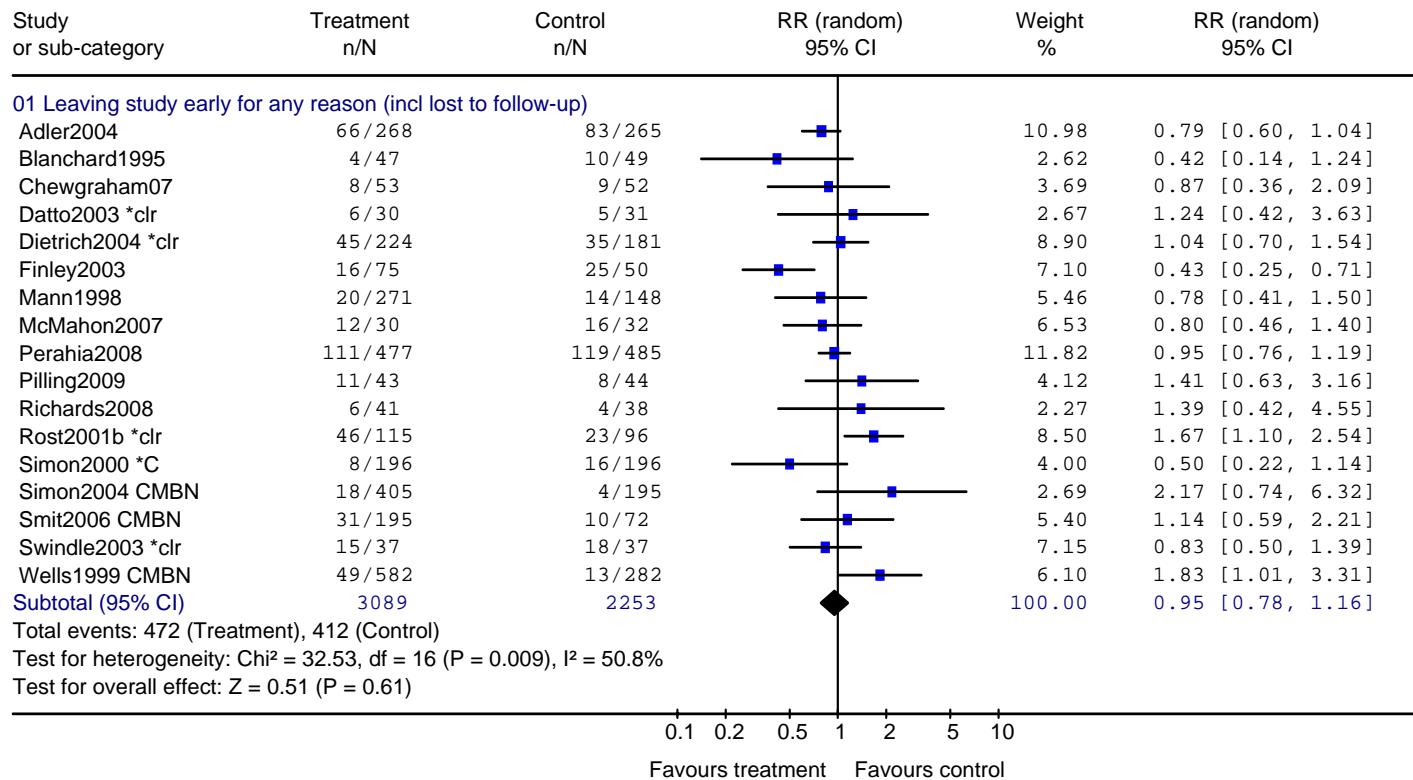
Review: Depression Update Service: Collaborative Care
 Comparison: 03 Overall efficacy - sensitivity analysis
 Outcome: 07 Mean change at endpoint



04: Acceptability and tolerability - sensitivity analysis

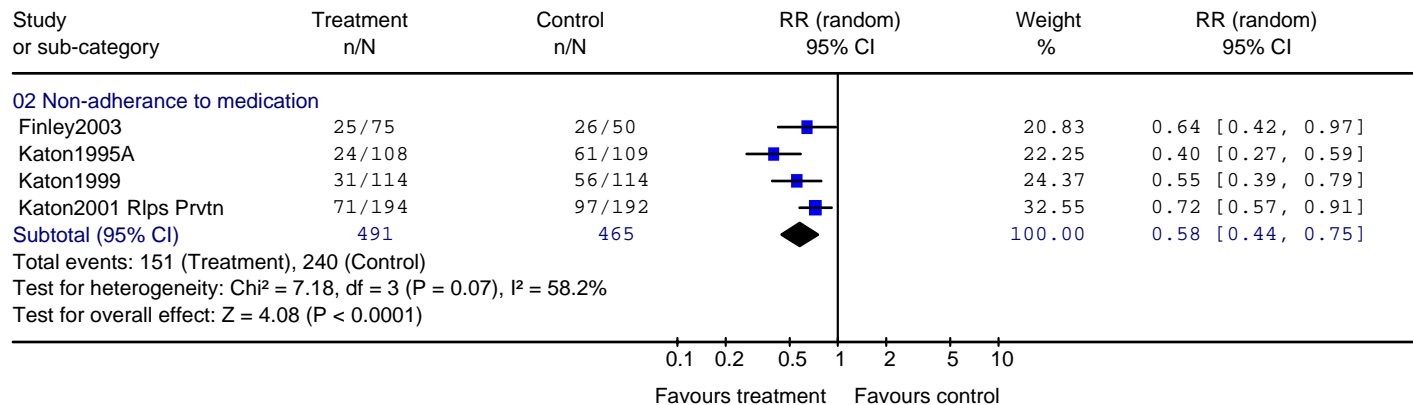
04.01 Dropout at endpoint

Review: Depression Update Service: Collaborative Care
 Comparison: 04 Overall acceptability and tolerability v usual care - sensitivity analysis
 Outcome: 01 Attrition



04.02 Non-adherence to medication at endpoint

Review: Depression Update Service: Collaborative Care
 Comparison: 04 Overall acceptability and tolerability v usual care - sensitivity analysis
 Outcome: 02 Adherence



Service delivery systems in the treatment and management of depression: medication management

Service delivery systems in the treatment and management of depression: medication management	28
01: Efficacy	29
01.01 Non-response at endpoint.....	29
01.02 Mean endpoint (self-rated)	29
01.03 Non-adherence to medication at endpoint.....	30
02: Acceptability and tolerability	31
02.01 Dropout at endpoint.....	31

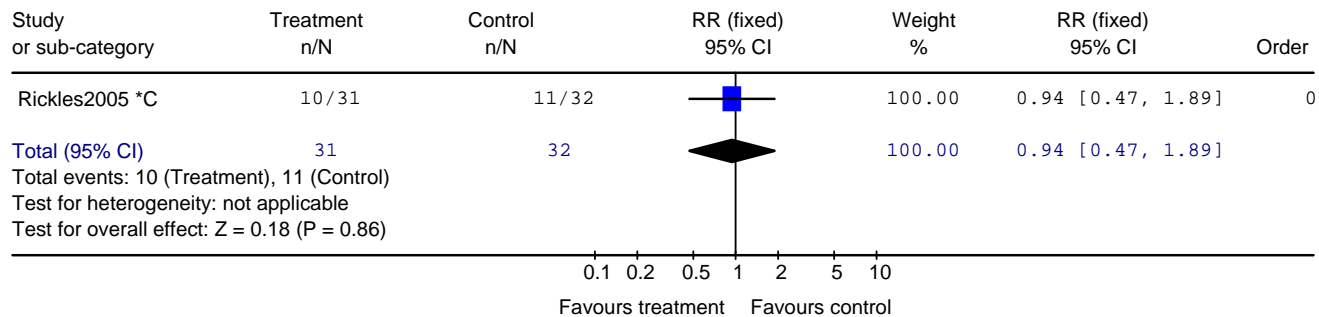
01: Efficacy

01.01 Non-response at endpoint²

Review: Depression Update Service: Medication Management

Comparison:01 Overall Efficacy (v usual care)

Outcome: 01 Number not achieving \geq 50% reduction in outcome score

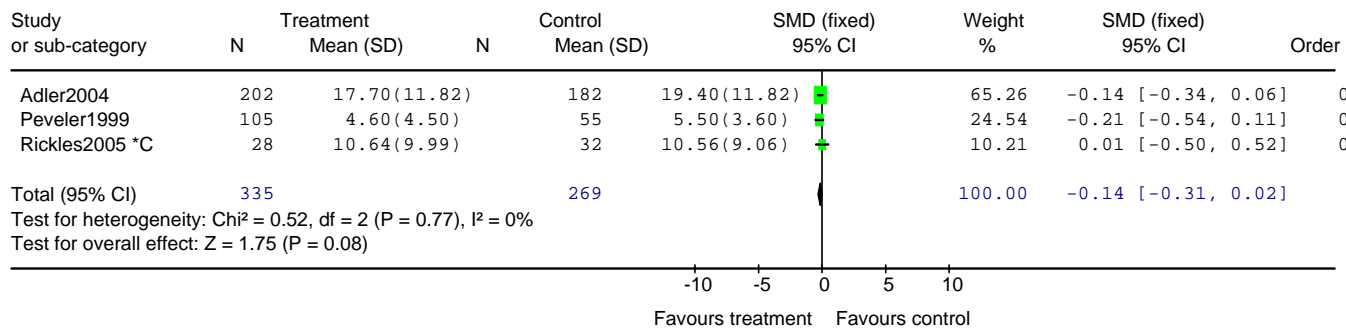


01.02 Mean endpoint (self-rated)

Review: Depression Update Service: Medication Management

Comparison:01 Overall Efficacy (v usual care)

Outcome: 02 Mean endpoint (self-rated)



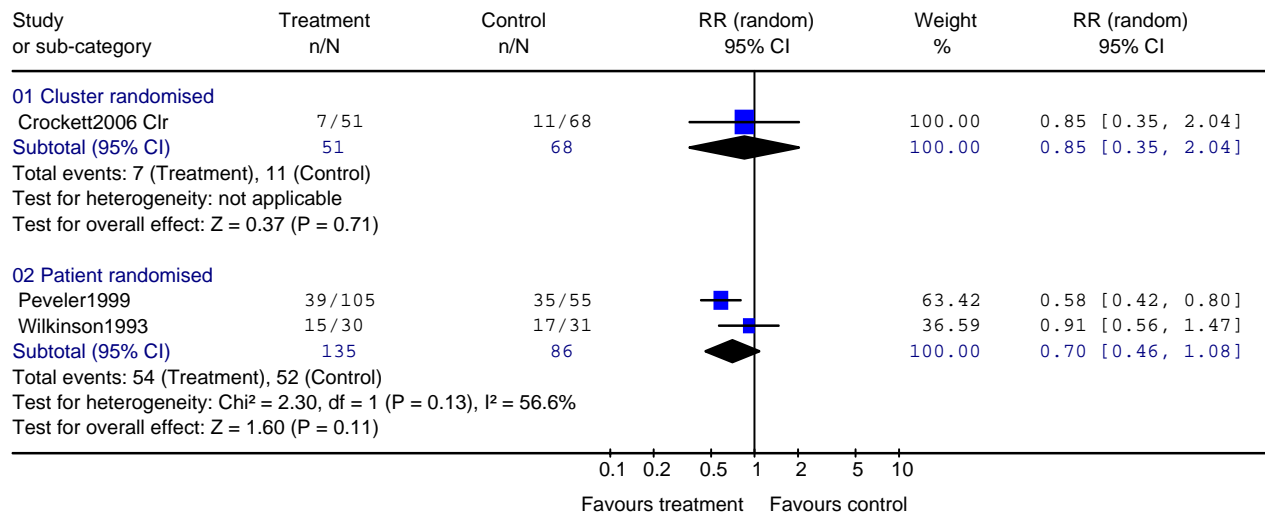
² *C = Completers analysis

01.03 Non-adherence to medication at endpoint³

Review: Depression Update Service: Medication Management

Comparison: 01 Overall Efficacy (v usual care)

Outcome: 03 Non-adherence to medication



³ Clr = cluster randomised (unadjusted)

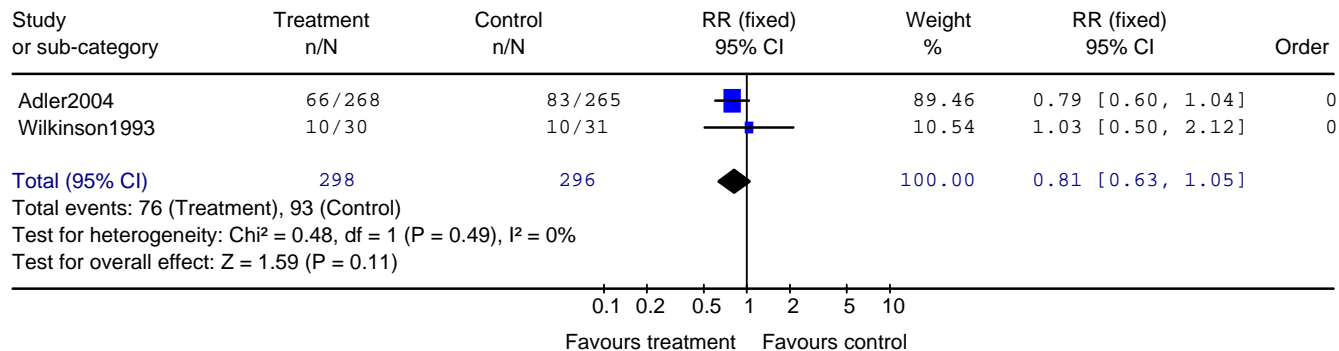
02: Acceptability and tolerability

02.01 Dropout at endpoint

Review: Depression Update Service: Medication Management

Comparison: 02 Tolerability and acceptability (v usual care)

Outcome: 01 Leaving study early for any reason (incl lost to follow-up)



Service delivery systems in the treatment and management of depression: attached professional

01: Efficacy

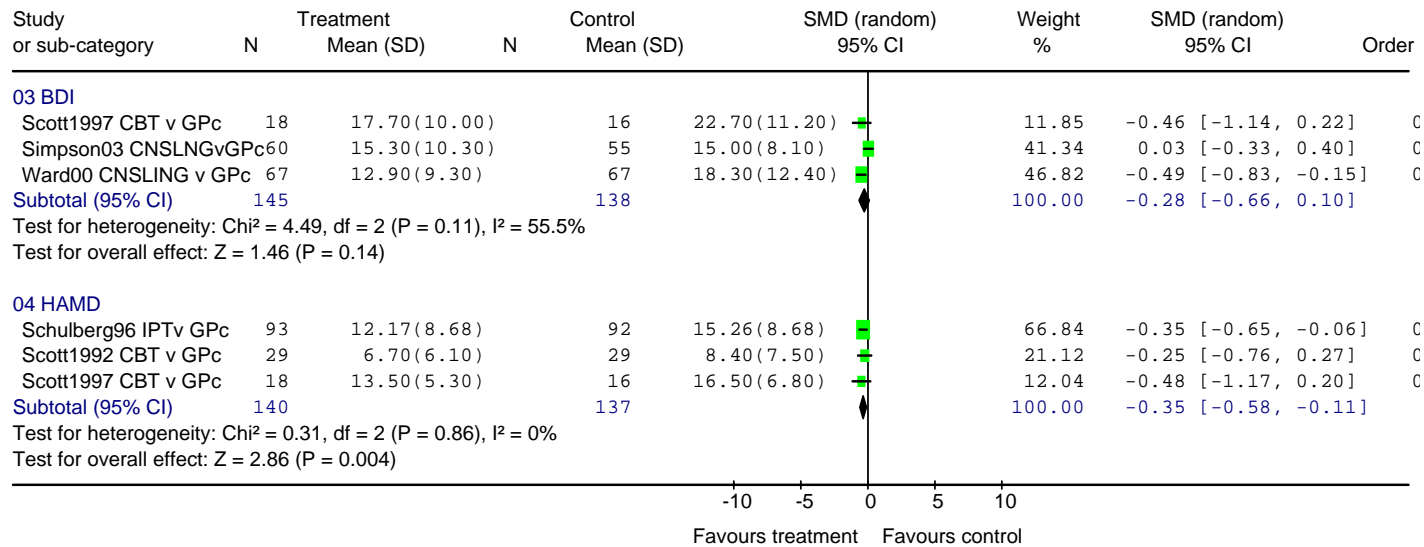
Mean endpoint (self-rated and clinician-rated)⁴

⁴ CBT = cognitive behavioural therapy; GPc = usual general practitioner care; CNSLNG = counselling; IPT = interpersonal psychotherapy

Review: Dep Up Service Attached Professional v Usual Care/WLc (mean endpoint only)

Comparison01 Attached Professional (all) v Control (WLc/GPcare)

Outcome: 01 Depression scores: continuous measures at endpoint



Case Identification

Forest plots for the review of case identification studies are in the draft guideline on Depression and Chronic Health Problems (DCHP) which can be found on the NICE website (www.nice.org.uk).