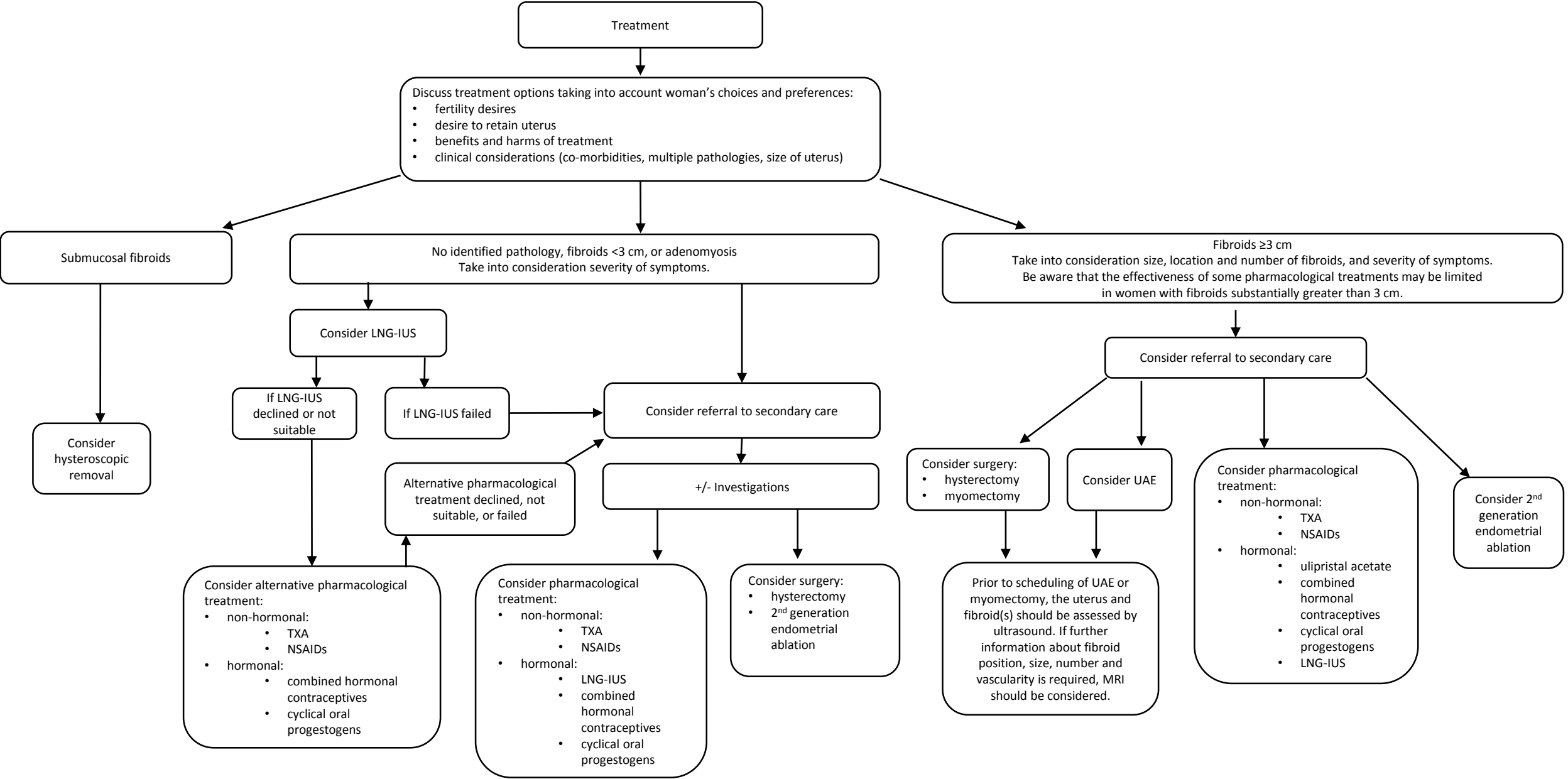


2D: two-dimensional; HMB: heavy menstrual bleeding; LNG-IUS: levonorgestrel-releasing intrauterine system; MRI: magnetic resonance imaging; NSAIDs: nonsteroidal anti-inflammatory drugs; TA: transabdominal; TV: transvaginal; TXA: tranexamic acid

<sup>1</sup>women who are obese, women with persistent intermenstrual bleeding, or irregular or infrequent bleeding (for example, women with polycystic ovary syndrome), women taking tamoxifen, women for whom treatment for HMB has been unsuccessful

<sup>2</sup>if high risk for endometrial pathology (see footnote 1)



LNG-IUS: levonorgestrel-releasing intrauterine system; NSAIDs: nonsteroidal anti-inflammatory drugs; TXA: tranexamic acid; UAE: uterine artery embolisation