

A review of the effectiveness and cost-effectiveness of personal, social and health education in secondary schools focusing on sex and relationships and alcohol education for young people aged 11 to 19 years

SRE FOREST PLOTS

Lisa Jones, Geoff Bates, Jennifer Downing, Harry Sumnall, Mark A Bellis

Centre for Public Health, Liverpool John Moores University



Table of figures

Figure 1. UK SRE studies: Whether students had ever had sex at follow-up [1] 3

Figure 2. UK SRE studies: Whether students had ever had sex at follow-up [2] 4

Figure 3. UK SRE studies: No regret at first sexual intercourse 5

Figure 4. UK SRE studies: Contraceptive use at first sex 6

Figure 5. UK SRE studies: Contraceptive use at last or most recent sex 7

Figure 6. UK SRE studies: Pregnancy outcomes..... 8

Figure 7. Abstinence-only: Ever had sexual intercourse at follow-up 9

Figure 8. Abstinence only: Ever had sexual intercourse at follow-up..... 9

Figure 9. Abstinence-plus programmes: Initiated sexual intercourse by follow-up..... 10

Figure 10. Abstinence-plus programmes: Contraception use at first intercourse..... 11

Figure 11. Abstinence-plus programmes: Contraceptive use at last intercourse 12

Figure 12. HIV & Sexuality programmes: Initiation of sexual activity between baseline and follow-up..... 13

Figure 13. HIV & Sexuality Education programmes: Contraceptive use 14

Figure 14. HIV & Sexuality education programmes: Pregnancy since baseline 15

Figure 1. UK SRE studies: Whether students had ever had sex at follow-up [1]

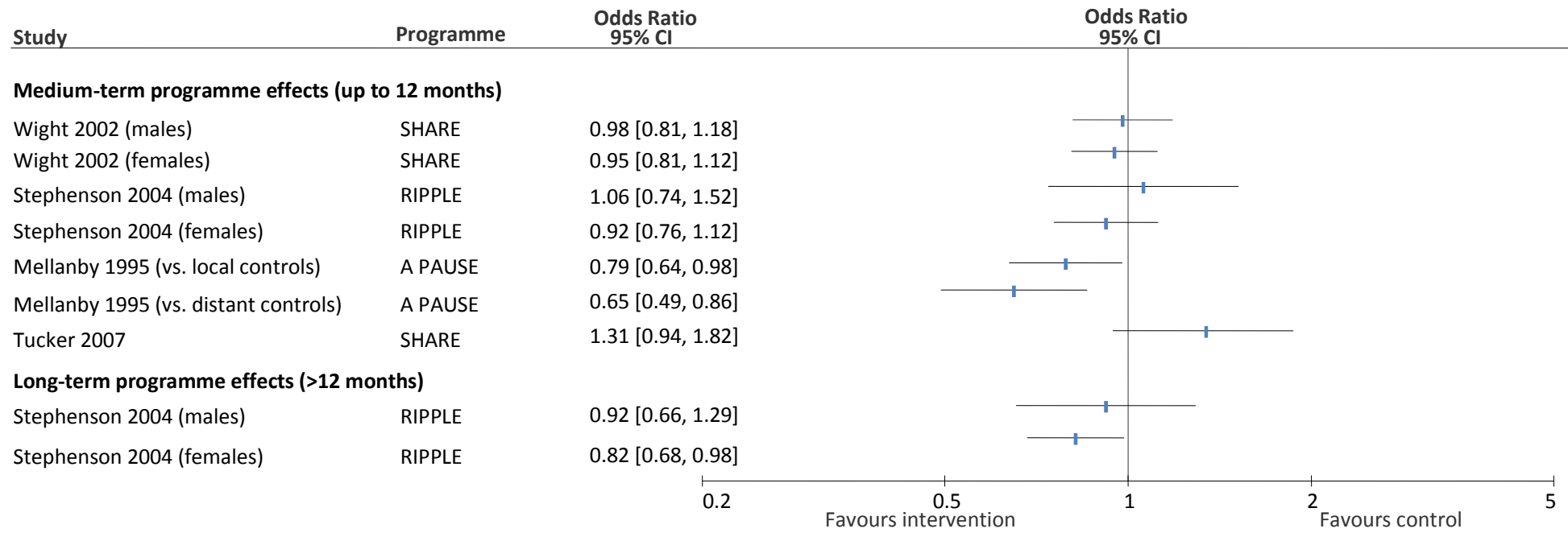


Figure 2. UK SRE studies: Whether students had ever had sex at follow-up [2]

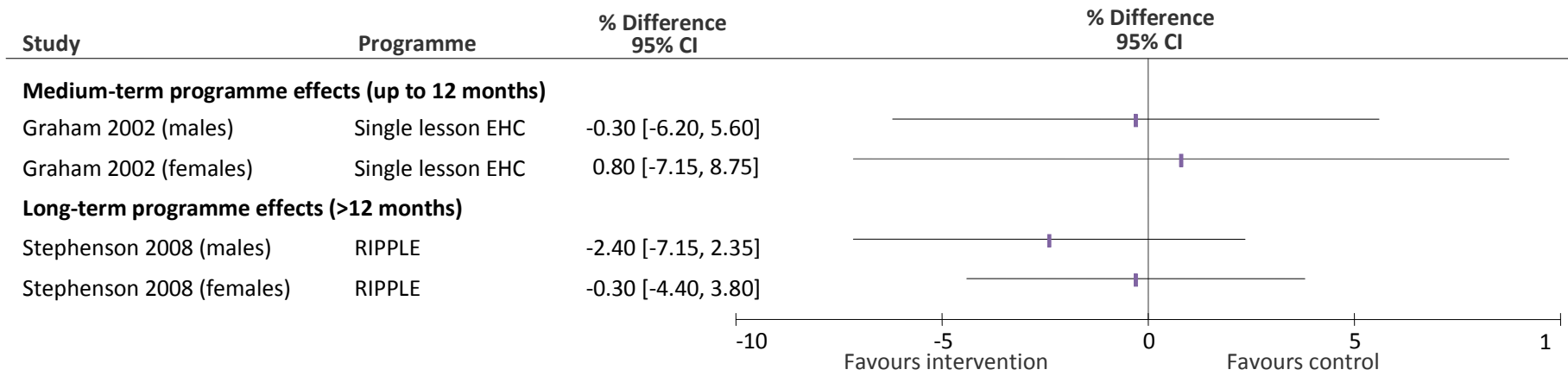


Figure 3. UK SRE studies: No regret at first sexual intercourse

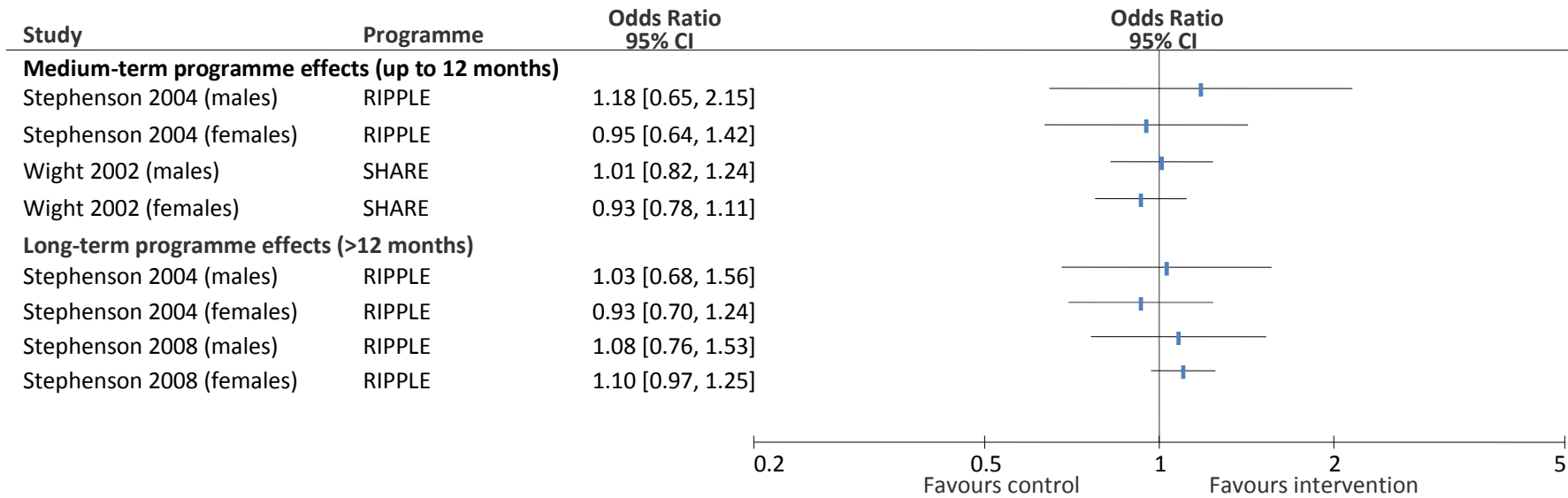


Figure 4. UK SRE studies: Contraceptive use at first sex

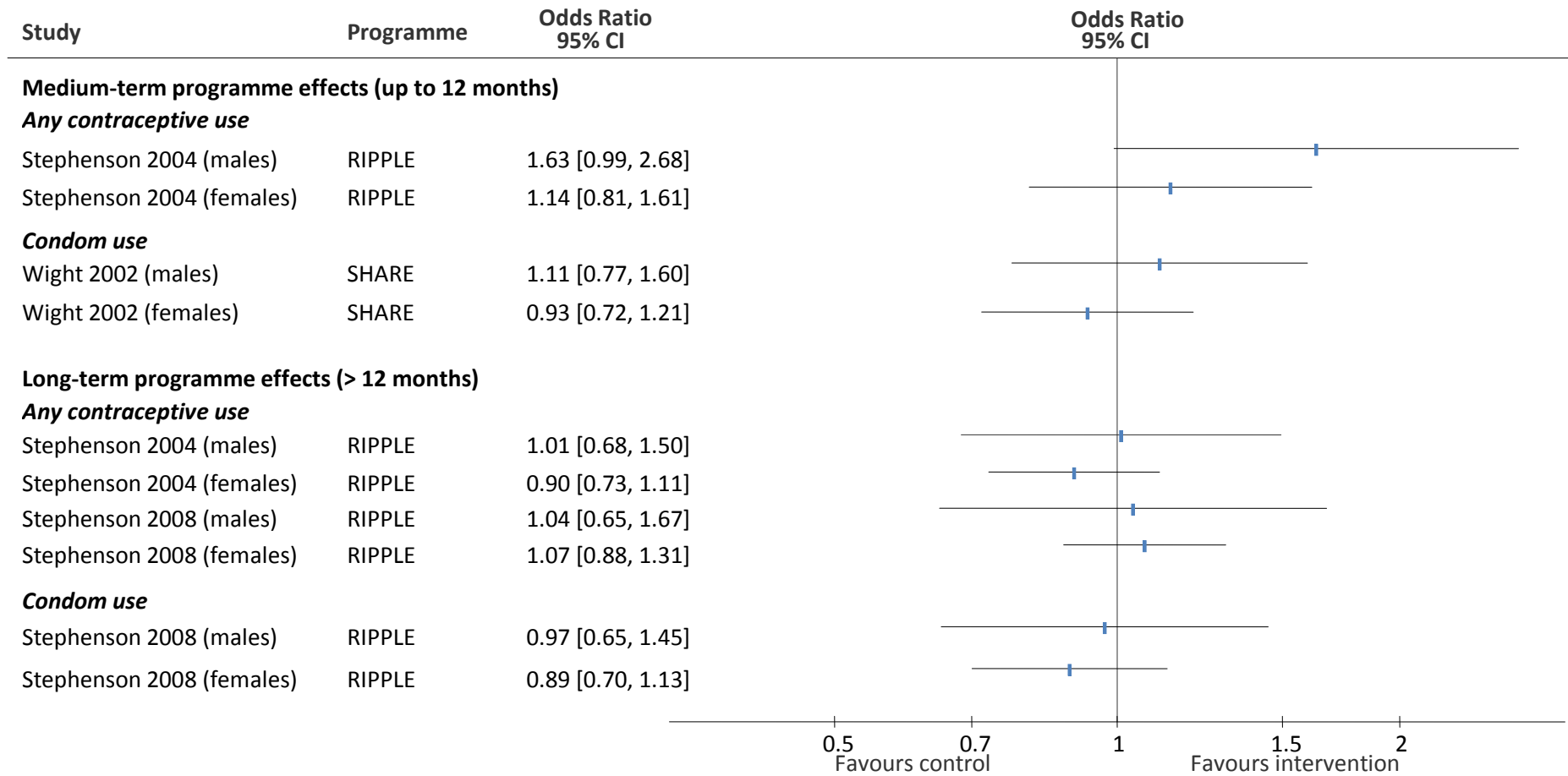


Figure 5. UK SRE studies: Contraceptive use at last or most recent sex

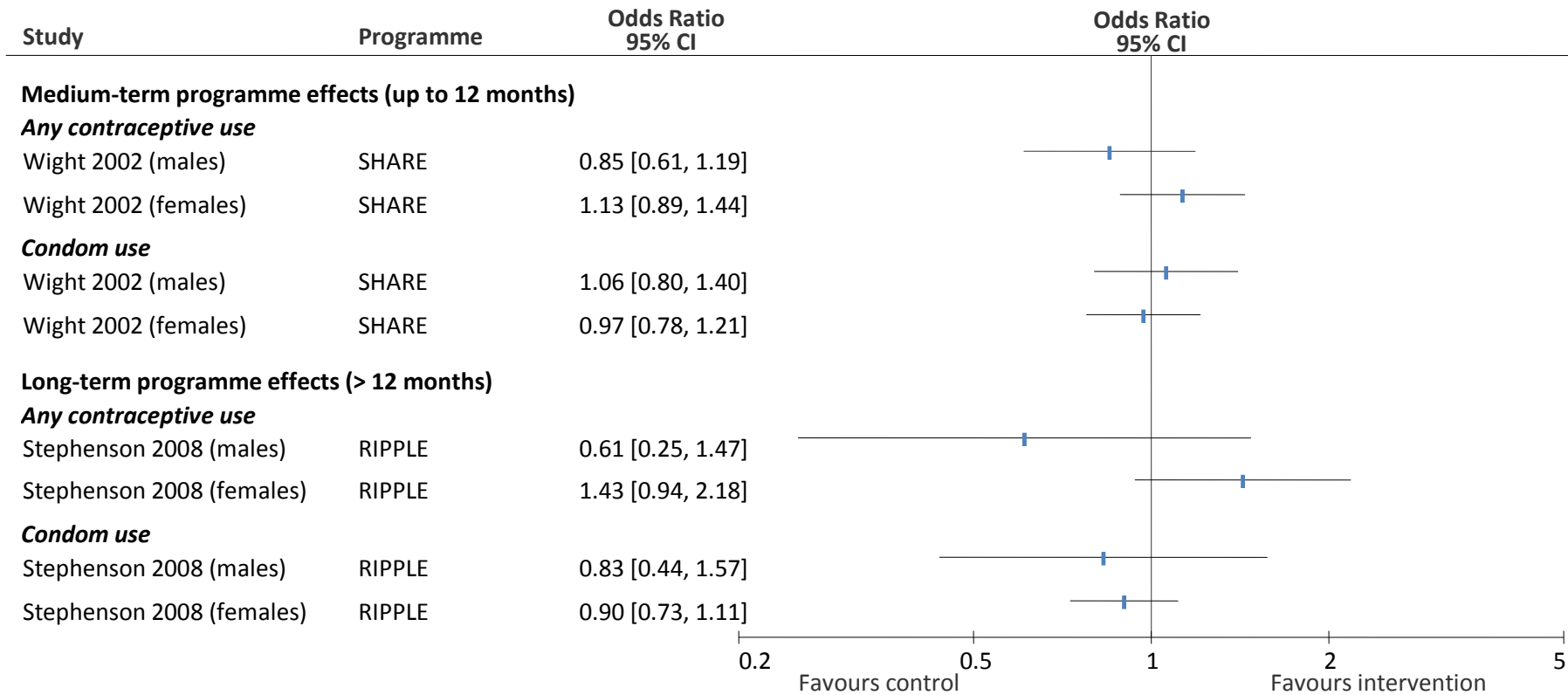
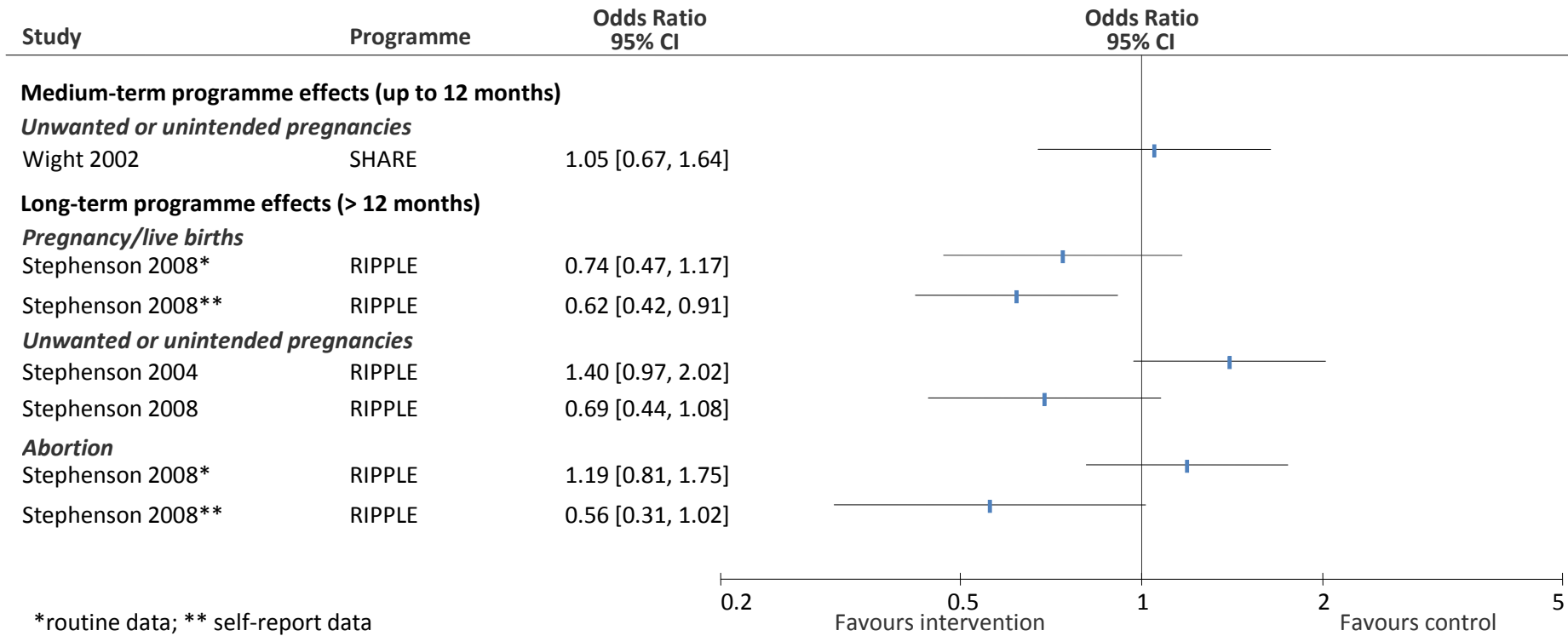


Figure 6. UK SRE studies: Pregnancy outcomes



*routine data; ** self-report data

Figure 7. Abstinence-only: Ever had sexual intercourse at follow-up

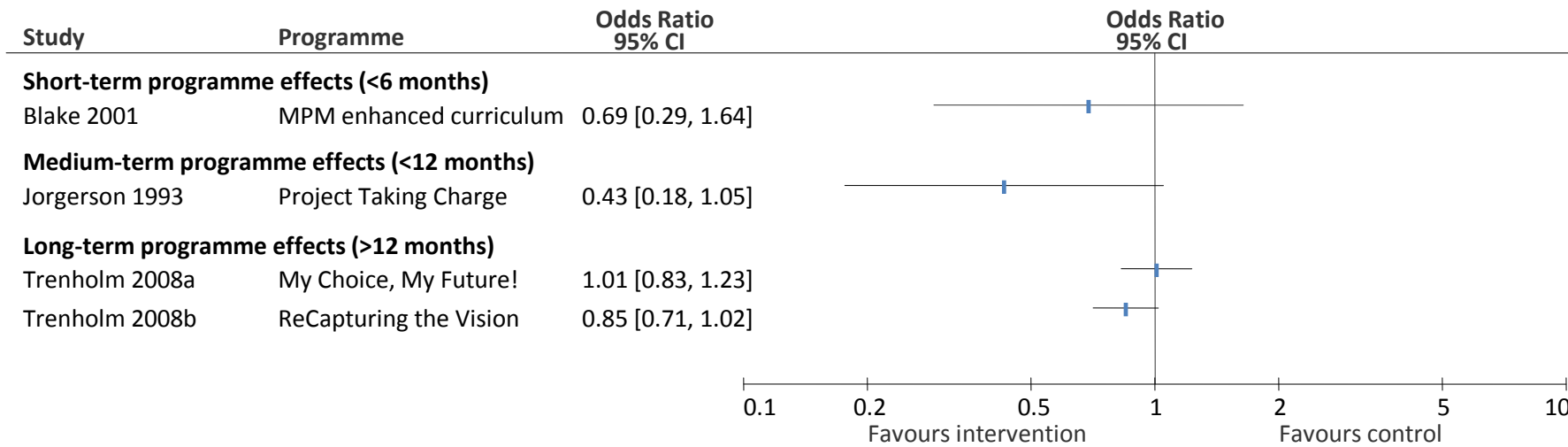


Figure 8. Abstinence only: Ever had sexual intercourse at follow-up

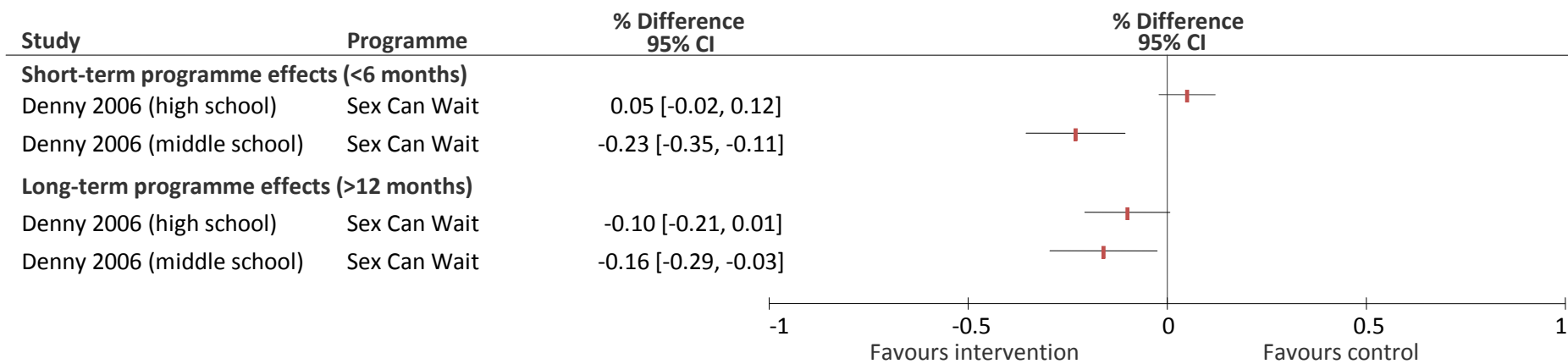


Figure 9. Abstinence-plus programmes: Initiated sexual intercourse by follow-up

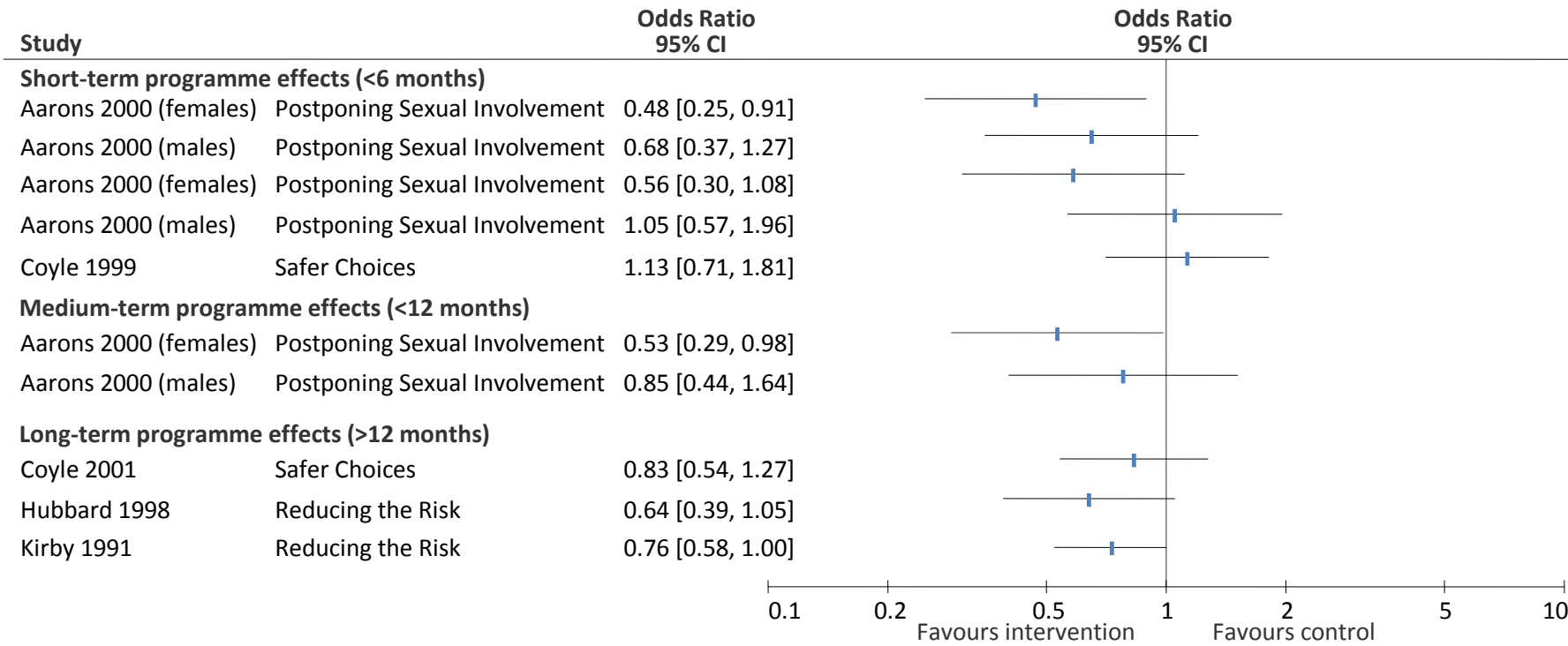


Figure 10. Abstinence-plus programmes: Contraception use at first intercourse

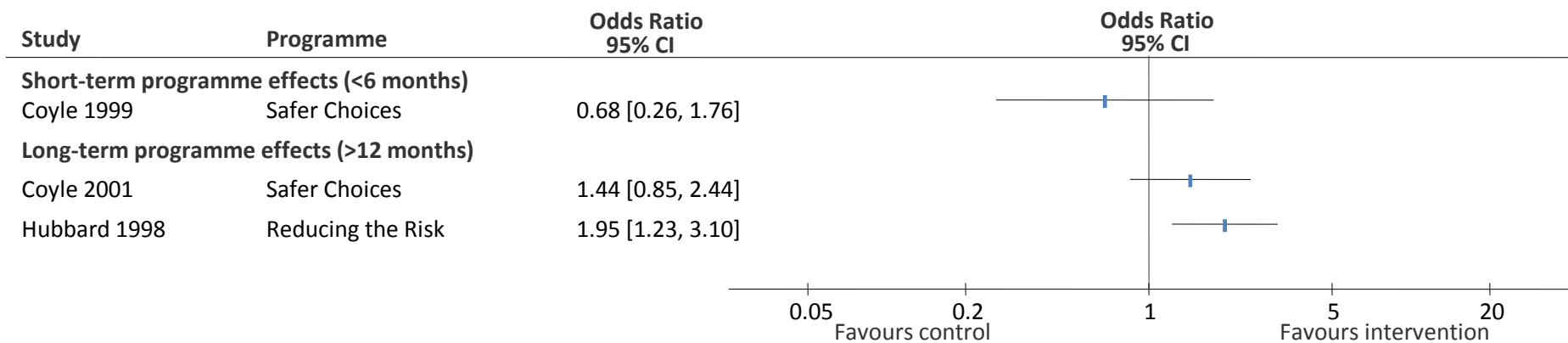


Figure 11. Abstinence-plus programmes: Contraceptive use at last intercourse

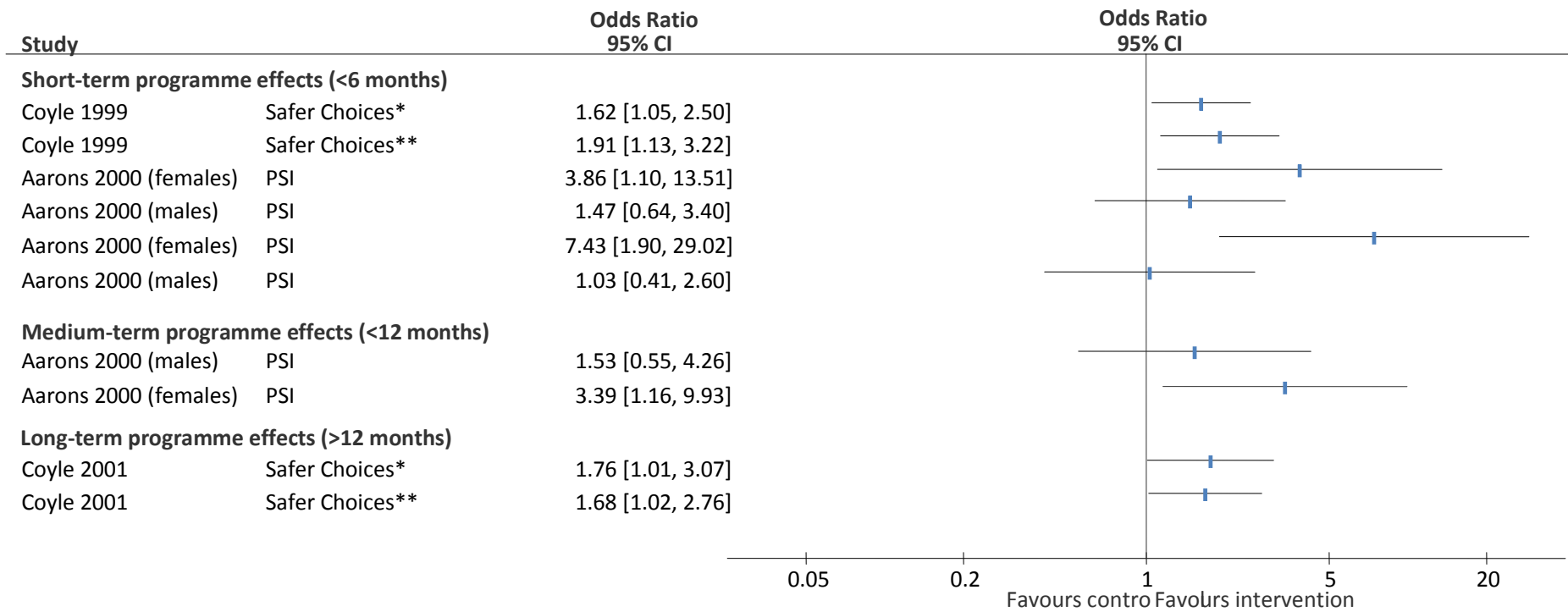


Figure 12. HIV & Sexuality programmes: Initiation of sexual activity between baseline and follow-up

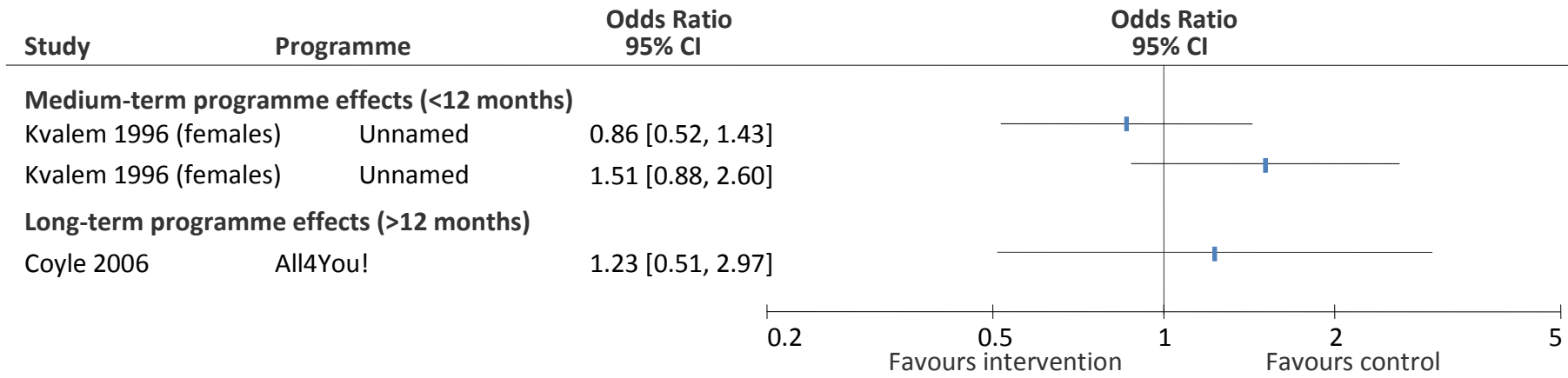


Figure 13. HIV & Sexuality Education programmes: Contraceptive use

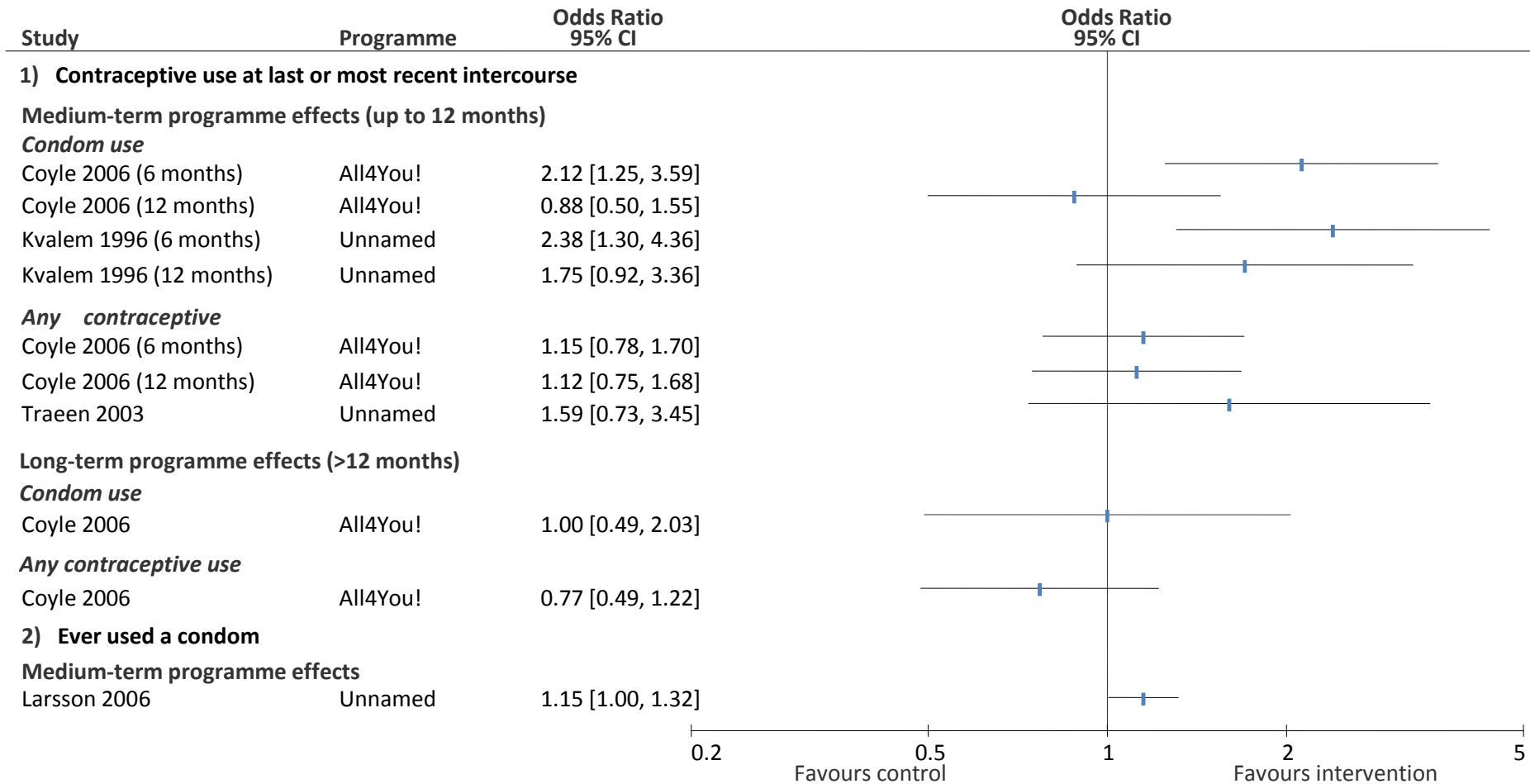


Figure 14. HIV & Sexuality education programmes: Pregnancy since baseline

