

Urinary incontinence (update) and pelvic organ prolapse in women: management

Economic study selection

NICE guideline tbc

Supplementary material D

October 2018

Draft for Consultation

*Supplementary materials were developed by
the National Guideline Alliance hosted by the
Royal College of Obstetricians and
Gynaecologists*

Disclaimer

The recommendations in this guideline represent the view of NICE, arrived at after careful consideration of the evidence available. When exercising their judgement, professionals are expected to take this guideline fully into account, alongside the individual needs, preferences and values of their patients or service users. The recommendations in this guideline are not mandatory and the guideline does not override the responsibility of healthcare professionals to make decisions appropriate to the circumstances of the individual patient, in consultation with the patient and/or their carer or guardian.

Local commissioners and/or providers have a responsibility to enable the guideline to be applied when individual health professionals and their patients or service users wish to use it. They should do so in the context of local and national priorities for funding and developing services, and in light of their duties to have due regard to the need to eliminate unlawful discrimination, to advance equality of opportunity and to reduce health inequalities. Nothing in this guideline should be interpreted in a way that would be inconsistent with compliance with those duties.

NICE guidelines cover health and care in England. Decisions on how they apply in other UK countries are made by ministers in the [Welsh Government](#), [Scottish Government](#), and [Northern Ireland Executive](#). All NICE guidance is subject to regular review and may be updated or withdrawn.

Copyright

© NICE, 2019. All rights reserved. Subject to [Notice of Rights](#).

ISBN:

Contents

Contents	4
Economic literature search strategies	5
Database: Medline & Embase (Multifile)	5
Database: Health Technology Assessment	6
Database: NHS Economic Evaluation Database	7
Economic study selection	8

Economic literature search strategies

The same literature search was carried out across all guideline questions for any health economic studies relating to urinary incontinence and pelvic organ prolapse.

Database: Medline & Embase (Multifile)

Last searched on **Embase Classic+Embase** 1947 to 2018 June 01, **Ovid MEDLINE(R) Epub Ahead of Print, In-Process & Other Non-Indexed Citations, Ovid MEDLINE(R) Daily and Ovid MEDLINE(R)** 1946 to Present.

Last searched: 4 June 2018

#	Searches
1	Economics/ use ppez
2	Value of life/ use ppez
3	exp "Costs and Cost Analysis"/ use ppez
4	exp Economics, Hospital/ use ppez
5	exp Economics, Medical/ use ppez
6	Economics, Nursing/ use ppez
7	Economics, Pharmaceutical/ use ppez
8	exp "Fees and Charges"/ use ppez
9	exp Budgets/ use ppez
10	health economics/ use emczd
11	exp economic evaluation/ use emczd
12	exp health care cost/ use emczd
13	exp fee/ use emczd
14	budget/ use emczd
15	funding/ use emczd
16	budget*.ti,ab.
17	cost*.ti.
18	(economic* or pharmaco?economic*).ti.
19	(price* or pricing*).ti,ab.
20	(cost* adj2 (effective* or utilit* or benefit* or minimi* or unit* or estimat* or variable*)).ab.
21	(financ* or fee or fees).ti,ab.
22	(value adj2 (money or monetary)).ti,ab.
23	or/1-22
24	Urinary Incontinence/ use ppez
25	urine incontinence/ use emczd
26	Urinary Incontinence, Stress/ use ppez
27	stress incontinence/ use emczd
28	Urinary Incontinence, Urge/ use ppez
29	urge incontinence/ use emczd
30	Urinary Bladder, Overactive/ use ppez
31	overactive bladder/ use emczd
32	bladder instability/ use emczd
33	Nocturia/ use ppez
34	nocturia/ use emczd
35	exp Enuresis/ use ppez
36	exp enuresis/ use emczd
37	mixed incontinence/ use emczd
38	((stress\$ or mix\$ or urg\$ or urin\$) adj5 incontinen\$).tw.
39	(bladder\$ adj5 (overactiv\$ or over activ\$ or over-activ\$ or instabilit\$ or hyper-reflex\$ or hyperreflex\$ or hyper reflex\$ or incontinen\$)).tw.
40	(detrusor\$ adj5 (overactiv\$ or over activ\$ or over-activ\$ or instabilit\$ or hyper-reflex\$ or hyperreflex\$ or hyper reflex\$)).tw.
41	OAB.tw.
42	((urgency adj2 frequency) or (frequency adj2 urgency)).tw.
43	((urin\$ or bladder\$) adj2 (urg\$ or frequen\$)).tw.
44	(nocturia\$ or enuresis\$).tw.

Urinary incontinence (update) and pelvic organ prolapse in women: Health economics literature DRAFT (October 2018)

#	Searches
45	SUI.tw.
46	24 or 25 or 26 or 27 or 28 or 29 or 30 or 31 or 32 or 33 or 34 or 35 or 36 or 37 or 38 or 39 or 40 or 41 or 42 or 43 or 44 or 45
47	23 and 46
48	exp Pelvic Organ Prolapse/ use ppez
49	exp pelvic organ prolapse/ use emczd
50	(pelvic\$ adj3 organ\$ adj3 prolaps\$).tw.
51	(urinary adj3 bladder adj3 prolaps\$).tw.
52	((vagin\$ or urogenital\$ or genit\$ or uter\$ or viscer\$ or anterior\$ or posterior\$ or apical or pelvi\$ or vault\$ or urethr\$ or bladder\$) adj3 prolaps\$).tw.
53	(splachnoptos\$ or visceroptos\$).tw.
54	Rectocele/ use ppez
55	rectocele/ use emczd
56	(hernia\$ adj3 (pelvi\$ or vagin\$ or urogenital\$ or uter\$ or bladder\$ or urethr\$ or viscer\$)).tw.
57	(urethroce?ele\$ or enteroc?ele\$ or sigmoidoc?ele\$ or proctoc?ele\$ or rectoc?ele\$ or cystoc?ele\$ or rectoenteroc?ele\$ or cystourethroce?ele\$).tw.
58	48 or 49 or 50 or 51 or 52 or 53 or 54 or 55 or 56 or 57
59	23 and 58
60	47 or 59
61	remove duplicates from 60

Database: Health Technology Assessment

Last searched on **Health Technology Assessment Database: Issue 4 of 4, October 2016** via Wiley Online.

Last searched: 4 June 2018

#	Searches
#1	MeSH descriptor: [Urinary Incontinence] this term only
#2	MeSH descriptor: [Urinary Incontinence, Stress] this term only
#3	MeSH descriptor: [Urinary Incontinence, Urge] this term only
#4	MeSH descriptor: [Urinary Bladder, Overactive] this term only
#5	MeSH descriptor: [Nocturia] this term only
#6	MeSH descriptor: [Enuresis] explode all trees
#7	((stress* or mix* or urg* or urin*) near/5 incontinen*):ti,ab,kw (Word variations have been searched)
#8	(bladder* near/5 (overactiv* or over activ* or over-activ* or instabilit* or hyper-reflex* or hyperreflex* or hyper reflex* or incontinen*)):ti,ab,kw (Word variations have been searched)
#9	(detrusor* near/5 (overactiv* or over activ* or over-activ* or instabilit* or hyper-reflex* or hyperreflex* or hyper reflex* or incontinen*)):ti,ab,kw (Word variations have been searched)
#10	OAB:ti,ab,kw (Word variations have been searched)
#11	((urgency NEAR/2 frequency) or (frequency near/2 urgency)):ti,ab,kw (Word variations have been searched)
#12	((urin* or bladder*) near/2 (urg* or frequen*)):ti,ab,kw (Word variations have been searched)
#13	(nocturia* or enuresis*):ti,ab,kw (Word variations have been searched)
#14	SUI:ti,ab,kw (Word variations have been searched)
#15	#1 or #2 or #3 or #4 or #5 or #6 or #7 or #8 or #9 or #10 or #11 or #12 or #13 or #14
#16	MeSH descriptor: [Pelvic Organ Prolapse] explode all trees
#17	(pelvic* near/3 organ* near/3 prolaps*):ti,ab,kw (Word variations have been searched)
#18	(urinary near/3 bladder near/3 prolaps*):ti,ab,kw (Word variations have been searched)
#19	((vagin* or urogenital* or genit* or uter* or viscer* or anterior* or posterior* or apical or pelvi* or vault* or urethr* or bladder*) near/3 prolaps*):ti,ab,kw (Word variations have been searched)
#20	(splachnoptos* or visceroptos*):ti,ab,kw (Word variations have been searched)
#21	MeSH descriptor: [Rectocele] explode all trees
#22	(hernia* near/3 (pelvi* or vagin* or urogenital* or uter* or bladder* or urethr* or viscer*)):ti,ab,kw (Word variations have been searched)
#23	(urethrocele* or urethrocoele* or enterocele* or enterocoele* or sigmoidocoele* or sigmoidocele* or proctocoele* or proctocoele* or rectocele* or rectocoele* or cystocoele* or cystocoele* or rectoenterocele* or rectoenterocele* or cystourethrocele* or cystourethrocoele*):ti,ab,kw (Word variations have been searched)
#24	#16 or #17 or #18 or #19 or #20 or #21 or #22 or #23
#25	#15 or #24

Urinary incontinence (update) and pelvic organ prolapse in women: Health economics literature DRAFT (October 2018)

Database: NHS Economic Evaluation Database

Last searched on **NHS Economic Evaluation Database: Issue 2 of 4, April 2015** via Wiley Online.

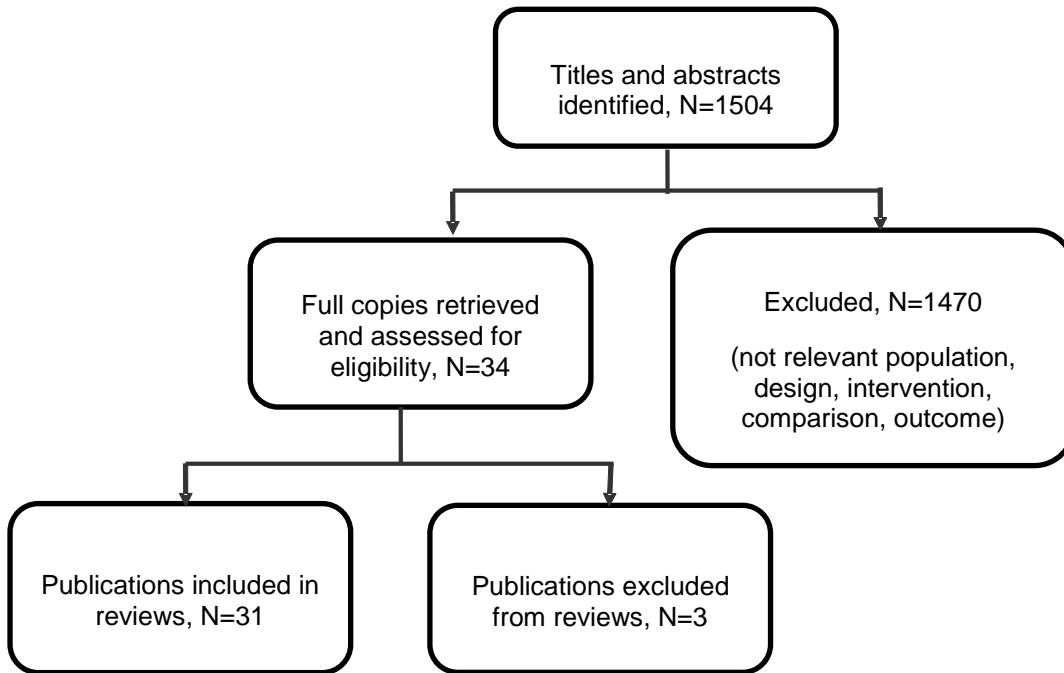
Last searched: 4 June 2018

#	Searches
#1	MeSH descriptor: [Urinary Incontinence] this term only
#2	MeSH descriptor: [Urinary Incontinence, Stress] this term only
#3	MeSH descriptor: [Urinary Incontinence, Urge] this term only
#4	MeSH descriptor: [Urinary Bladder, Overactive] this term only
#5	MeSH descriptor: [Nocturia] this term only
#6	MeSH descriptor: [Enuresis] explode all trees
#7	((stress* or mix* or urg* or urin*) near/5 incontinen*):ti,ab,kw (Word variations have been searched)
#8	(bladder* near/5 (overactiv* or over activ* or over-activ* or instabilit* or hyper-reflex* or hyperreflex* or hyper reflex* or incontinen*)):ti,ab,kw (Word variations have been searched)
#9	(detrusor* near/5 (overactiv* or over activ* or over-activ* or instabilit* or hyper-reflex* or hyperreflex* or hyper reflex* or incontinen*)):ti,ab,kw (Word variations have been searched)
#10	OAB:ti,ab,kw (Word variations have been searched)
#11	((urgency NEAR/2 frequency) or (frequency near/2 urgency)):ti,ab,kw (Word variations have been searched)
#12	((urin* or bladder*) near/2 (urg* or frequen*)):ti,ab,kw (Word variations have been searched)
#13	(nocturia* or enuresis*):ti,ab,kw (Word variations have been searched)
#14	SUI:ti,ab,kw (Word variations have been searched)
#15	#1 or #2 or #3 or #4 or #5 or #6 or #7 or #8 or #9 or #10 or #11 or #12 or #13 or #14
#16	MeSH descriptor: [Pelvic Organ Prolapse] explode all trees
#17	(pelvic* near/3 organ* near/3 prolaps*):ti,ab,kw (Word variations have been searched)
#18	(urinary near/3 bladder near/3 prolaps*):ti,ab,kw (Word variations have been searched)
#19	((vagin* or urogenital* or genit* or uter* or viscer* or anterior* or posterior* or apical or pelvi* or vault* or urethr* or bladder*) near/3 prolaps*):ti,ab,kw (Word variations have been searched)
#20	(splanchnoptos* or visceroptos*):ti,ab,kw (Word variations have been searched)
#21	MeSH descriptor: [Rectocele] explode all trees
#22	(hernia* near/3 (pelvi* or vagin* or urogenital* or uter* or bladder* or urethr* or viscer*)):ti,ab,kw (Word variations have been searched)
#23	(urethrocele* or urethrocoele* or enterocele* or enterococele* or sigmoidocoele* or sigmoidocele* or proctocoele* or proctococele* or rectocele* or rectococele* or cystocele* or cystococele* or rectoenterocele* or rectoenterococele* or cystourethrocele* or cystourethrocoele*):ti,ab,kw (Word variations have been searched)
#24	#16 or #17 or #18 or #19 or #20 or #21 or #22 or #23
#25	#15 or #24

Economic study selection

Economic evidence study selection is shown in Figure 1. The number of included and excluded studies for each review question is detailed in Table 1.

Figure 1: Economic study selection for urinary incontinence and pelvic organ prolapse



1 **Table 1: Summary of economic study selection**

Chapter	Review question	Number of included studies	Number of excluded studies
A	1.1 What is the value of urodynamic assessment in addition to clinical assessment before primary surgery for stress urinary incontinence?	2	0
B	2.1 How often should alternative treatment options be reviewed for women who are using absorbent containment products?	0	0
C	3.1 What are the risks to cognitive function for women taking anticholinergic drugs for overactive bladder?	0	0
D	4.1 What is the value of urodynamic assessment before botulinum toxin type A treatment?	0	0
D	4.2 What is the most effective dose of botulinum toxin type A for treating overactive bladder?	0	0
E	5.1 What is the most effective surgical management of stress urinary incontinence, including mesh and non-mesh procedures?	7	0
E	5.2 What is the effectiveness of surgical management of stress urinary incontinence (including mesh and non-mesh procedures), compared to pelvic floor muscle training?	1	1
F	6.1 What is the most effective composition of a multidisciplinary team for the assessment and management of simple and complex cases including mesh complications?	0	0
G	7.1 What is the most effective strategy for assessing pelvic organ prolapse?	0	0
H	8.1 What lifestyle interventions are effective for managing pelvic organ prolapse?	0	0
H	8.2 What is the effectiveness of topical oestrogen for managing pelvic organ prolapse with vaginal atrophy?	0	0
H	8.3 What are the most effective conservative management options (for example, pelvic floor exercises and pessaries) for pelvic organ prolapse?	4	0
I	8.4 What are the most effective surgical management options (including mesh and non-mesh procedures) for pelvic organ prolapse?	15	2
I	8.5 What is the role of surgery to prevent postoperative urinary incontinence in women having surgery for pelvic organ prolapse, including the sequence of interventions?	1	0
I	8.6 What is the effectiveness of surgical options for pelvic organ prolapse, compared to pessaries?	1	0
J	9.1 What is the most effective surgical management for women with both stress urinary incontinence and pelvic organ prolapse, including the sequence of interventions?	0	0

Chapter	Review question	Number of included studies	Number of excluded studies
K	10.1 What is the most effective strategy for assessing complications (for example, vaginal complications, sexual dysfunction, pain, urinary symptoms and bowel symptoms) after mesh surgery?	0	0
L	11.1 What are the most effective management options for vaginal complications (including exposure, extrusion and infection) after mesh surgery?	0	0
L	11.2 What are the most effective management options for sexual dysfunction after mesh surgery?	0	0
L	11.3 What are the most effective management options for pain after mesh surgery?	0	0
L	11.4 What are the most effective management options for urinary complications after mesh surgery?	0	0
L	11.5 What are the most effective management options for bowel symptoms after mesh surgery?	0	0

1