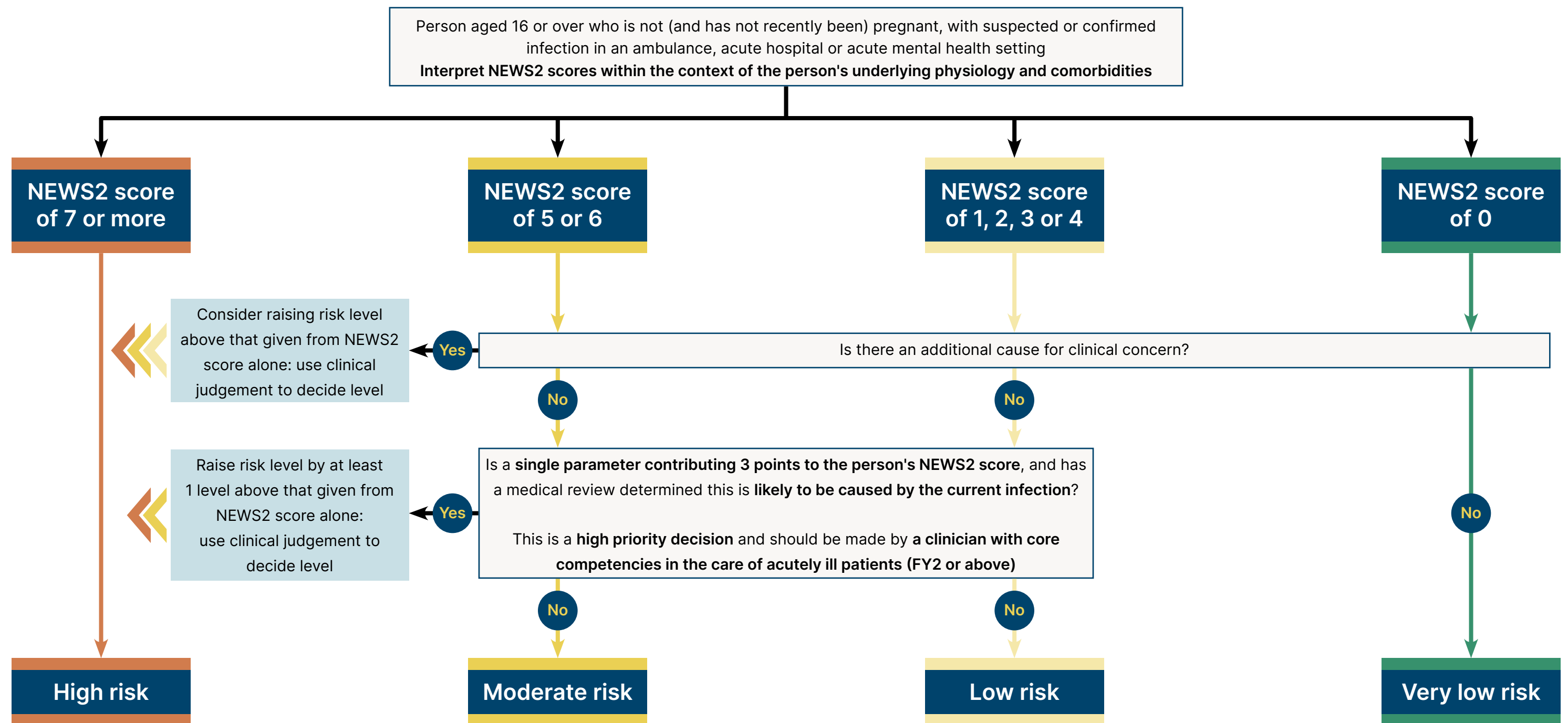


Suspected sepsis: evaluating risk of severe illness or death in acute healthcare settings with NEWS2



Also see the visual summaries on:

[Managing risk of severe illness or death in an acute mental health setting](#)
[Managing risk of severe illness or death in an ambulance](#)
[Managing risk of severe illness or death in acute hospital settings with NEWS2](#)