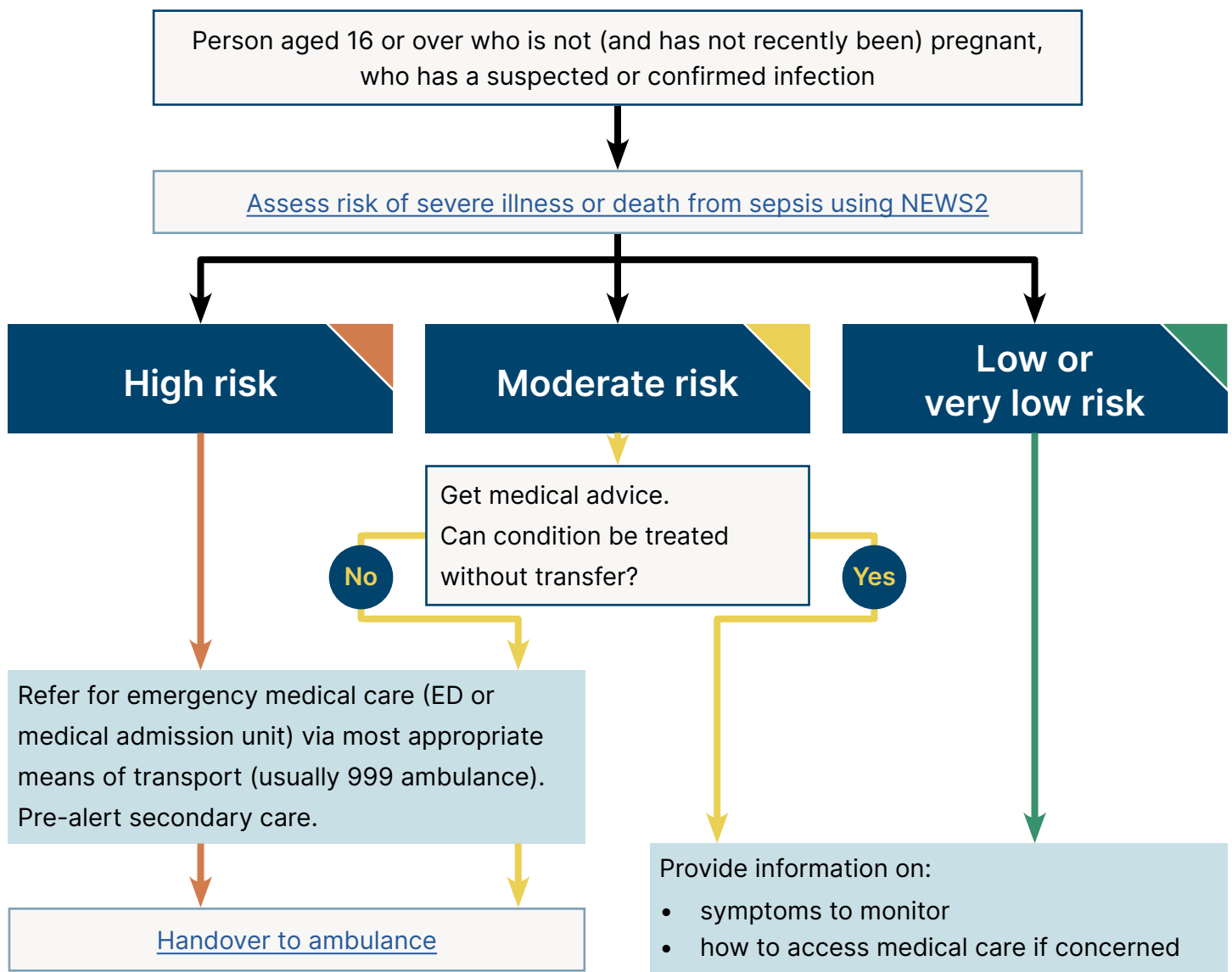


# Suspected sepsis: managing risk of severe illness or death in an acute mental health setting



## High risk

NEWS2 score of 7 or more, **or** NEWS2 score of 5 or 6, and either a single parameter contributing 3 points or additional cause for clinical concern.

## Moderate risk

NEWS2 score of 5 or 6, **or** NEWS2 score of 3 or 4, and a single parameter contributing 3 points or additional cause for clinical concern.

## Low risk

NEWS2 score of 1 to 4, **or** NEWS2 score of 0 and additional cause for clinical concern

## Very low risk

NEWS2 score of 0