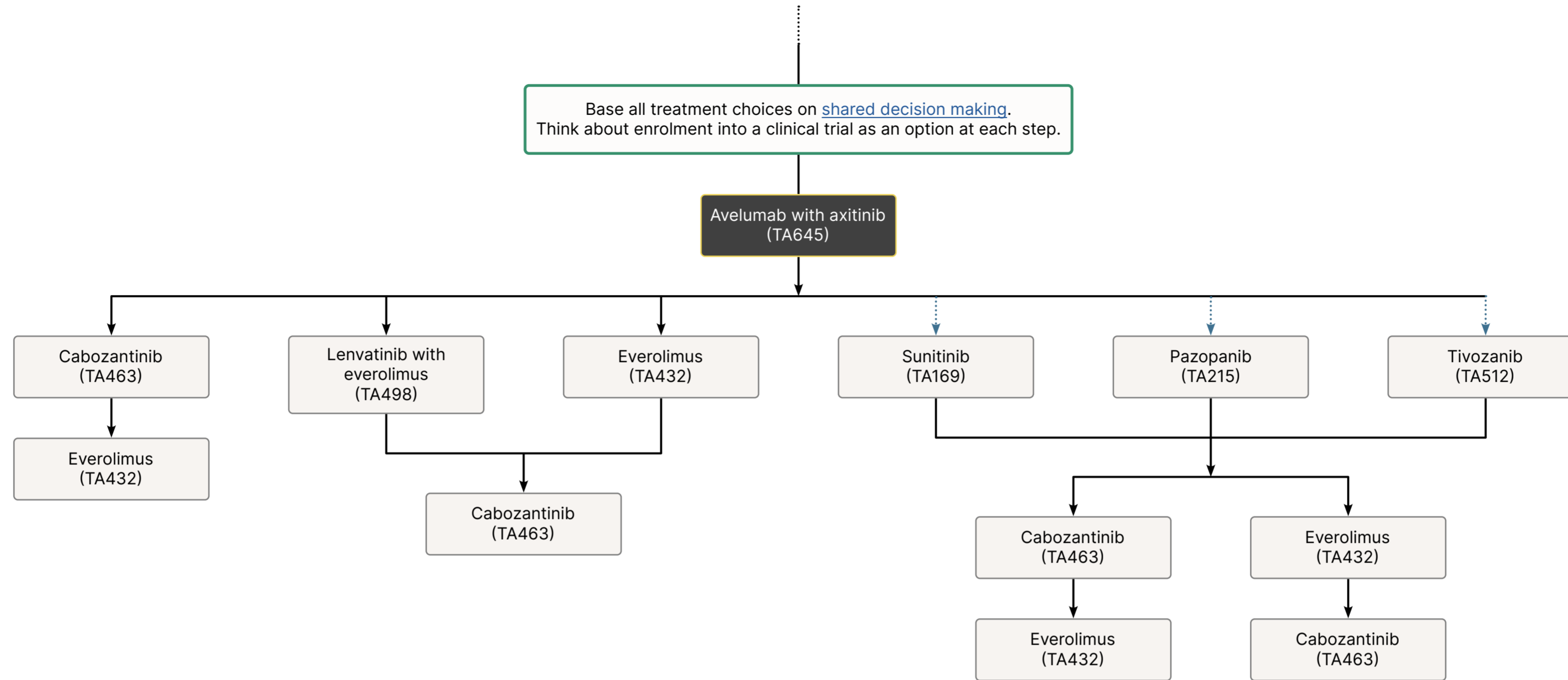


Systemic anticancer therapy for advanced renal cell carcinoma: treatment options (favourable risk IMDC)

Favourable risk
IMDC



[Managed Access](#)
(Cancer Drugs Fund):

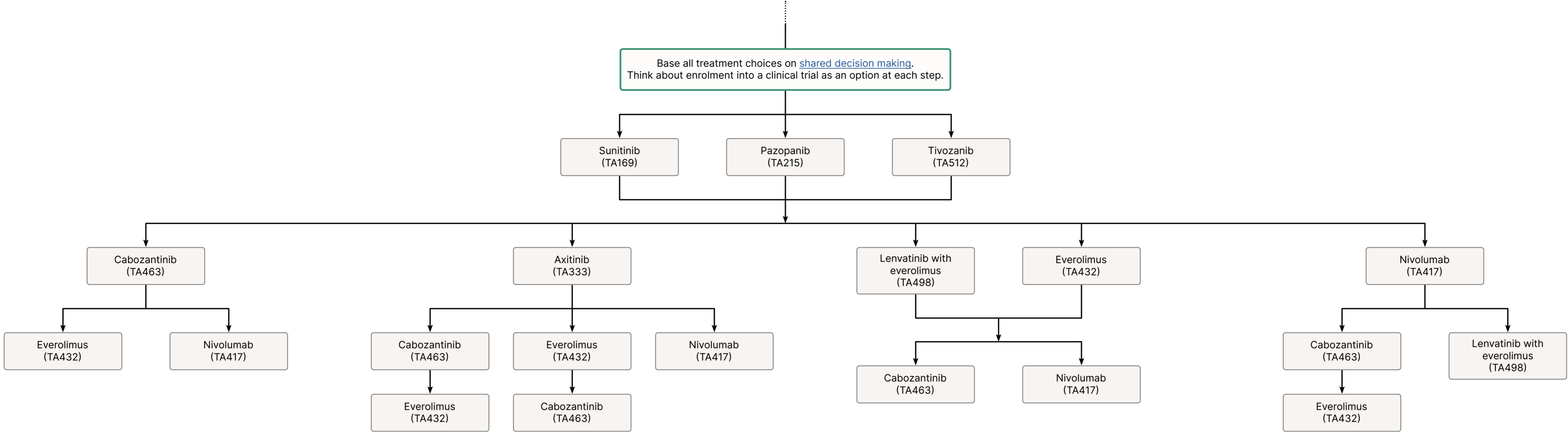
TA000

NHSE Policy:

.....➔

Click on each node to be taken to the NICE homepage for that technology appraisal.

Click **left** or **right** arrows to go to the **next** or **previous** page of this visual summary.



Managed Access
(Cancer Drugs Fund):

TA000

NHSE Policy:

Click on each node to be taken to the NICE homepage for that technology appraisal.

Click left or right arrows to go to the next or previous page of this visual summary.