

Chapter 32 Structured patient handovers

Emergency and acute medical care in over 16s: service delivery and organisation

NICE guideline <number>

July 2017

Draft for consultation

*Developed by the National Guideline Centre,
hosted by the Royal College of Physicians*

Disclaimer

Healthcare professionals are expected to take NICE clinical guidelines fully into account when exercising their clinical judgement. However, the guidance does not override the responsibility of healthcare professionals to make decisions appropriate to the circumstances of each patient, in consultation with the patient and, where appropriate, their guardian or carer.

Copyright

© National Institute for Health and Care Excellence, 2017. All rights reserved.

Contents

32 Structured patient handovers	5
32.1 Introduction	5
32.2 Review question: Do structured patient handovers between healthcare professionals improve outcomes?	5
32.3 Clinical evidence.....	6
32.4 Economic evidence	12
32.5 Evidence statements.....	14
32.6 Recommendations and link to evidence.....	15
Appendices.....	27
Appendix A: Review protocol	27
Appendix B: Clinical article selection	29
Appendix C: Forest plots	30
Appendix D: Clinical evidence tables.....	33
Appendix E: Economic evidence tables	44
Appendix F: GRADE tables	46
Appendix G: Excluded clinical studies	50
Appendix H: Excluded economic studies.....	54

1 32 Structured patient handovers

2 32.1 Introduction

3 Handover is the system by which the responsibility for immediate and ongoing care is transferred
 4 between healthcare professions. Changing work patterns mean that establishing standards for
 5 handover “should be a priority¹⁰¹”.

6 Although the process of handing over between shifts has been embedded in nursing practice for
 7 many years, the changing patterns of work in the hospital setting mean that there may be different
 8 medical teams looking after groups of patients across a 24 hour period. The medical and nursing
 9 professions both recognise the importance of effective handover between shifts and between health
 10 care professionals;

11 “Incomplete or delayed information can compromise safety, quality and the patient’s experience of
 12 health care⁷⁷.”

13 The Royal College of Nursing dedicate a section of The Principles of Nursing Practice¹⁰⁰ to
 14 communication and reporting stating;

15 “Evidence suggests that communication improves when nursing handover involves the patient and is
 16 carried out using a structured reporting format^{69,115}.”

17 The World Health Organisation goes as far as to recommend the use of SBAR (Situation, Background,
 18 Assessment, Recommendation) as a tool to standardise handover communications¹²⁴. It is recognised
 19 in the literature that one system does not fit all settings and that local adaptations may be needed.

20 Despite the evidence and apparent agreement that handovers are improved by following a structure,
 21 the Royal College of Physicians make further recommendations which suggest that there are still
 22 improvements to be made and that this is not yet standard practice in all areas.

23 “Improvement and standardisation of handover are vital keys to improvement in efficiency, patient
 24 safety, and patient experience. There is a need to define common core principles for handover,
 25 which can be adapted locally. For example, a standardised proforma for written handover is
 26 essential, preferably in conjunction with face-to-face verbal handover. Furthermore, in the current
 27 technological climate, where possible, electronic handover processes should be encouraged¹⁰¹.”

28 Although the evidence to date points to the value of structured patient handover, there may be cost
 29 implications for services if there is a need for change in shift pattern and an overlap required to allow
 30 time for handover. It is therefore important to investigate the most appropriate form of handover for
 31 best patient outcomes and the impact this may have on services.

32 32.2 Review question: Do structured patient handovers between 33 healthcare professionals improve outcomes?

34 For full details see review protocol in Appendix A.

35 **Table 1: PICO characteristics of review question**

Population	Adults and young people (16 years and over) with a suspected or confirmed AME (in all contexts not just secondary care).
Intervention(s)	Structured (planned framework as defined by the study) between healthcare professionals between shifts in acute settings: This will include (i) set times of the day, (ii) using a structured template/proforma for

	the handover (iii) recording the information in written or electronic form. Paper-based handover; using paper to conduct the structured handover. Verbal patient handover; verbally conducting the structured handover. Electronic-based handover; using electronic means to conduct the structured handover.
Comparison(s)	Normal handover; routine unstructured handover.
Outcomes	- Mortality CRITICAL - Avoidable adverse events (prescribing errors [errors of omission or commission] cardiopulmonary resuscitation, unplanned admission to intensive care, delayed or missed investigations, delayed or missed treatments) CRITICAL - Quality of life CRITICAL - Patient and/or carer satisfaction CRITICAL - Length of stay CRITICAL - Staff satisfaction IMPORTANT
Study design	Systematic reviews (SRs) of RCTs, RCTs, observational studies only to be included if no relevant SRs or RCTs are identified.

1

2 32.3 Clinical evidence

3 Six studies were included in the review; 1 non-randomised controlled study and 5 before-after
4 studies^{20,34,42,46,57,126} and these are summarised in Table 2 below. Evidence from these studies is
5 summarised in the GRADE clinical evidence profile/clinical evidence summary below. See also the
6 study selection flow chart in Appendix B, study evidence tables in Appendix D, forest plots in
7 Appendix C, GRADE tables in Appendix F and excluded studies list in Appendix G.

8 **Table 2: Summary of studies included in the review**

Study	Intervention and comparison	Population	Outcomes	Comments
Emler 2012 ³⁴ Non-randomised controlled study	A shift-work schedule with structured sign-out curriculum compared to a traditional every fourth night call schedule without sign-out curriculum.	Mixed medical and surgical ICU. n=820	Mortality; readmissions within 48 hours; ICU length of stay; family satisfaction, staff satisfaction.	The intervention involved structured sign-out plus shift scheduling.
Coon 2015 ²⁰ Before and after study	Pre and post-implementation of a standardised ICU transfer documentation checklist to supplement a verbal physician-to-physician report compared to a physician-to-physician report.	Neuro-intensive ICU. n=161	ICU readmissions Rapid response team calls.	None.
Gonzalo 2014 ⁴²	Evaluation of a standardised electronic sign-out	Patients in transition from ED to medicine ward.	Staff satisfaction.	None.

Study	Intervention and comparison	Population	Outcomes	Comments
Before and after study	tool with optional verbal communication.	n=1468		
Graham 2013A ⁴⁵ Before and after study	Alteration of a shift model to facilitate face to face verbal communication between the primary and night-time covering physicians, and an electronic template linked to the hospitals discharge information system for the day to night handoff.	Internal medicine nightshifts. n=39 interns surveyed over 132 intern shifts	Avoidable adverse events – Critical data omissions, near misses, adverse events.	None.
Kerr 2016 ⁵⁷ Before and after study	Structured nursing handover based on the ISBAR (identify, situation, background, assessment and recommendations) handover approach modified to address deficits in nursing care practice in the ED. Key features: systematic, conducted at the bedside, involvement of the patient/relatives, viewing of charts during handover and preliminary group handover for general info about unstable patients. Notepads providing prompts about nursing care needs, treatment and disposition plan and important care elements (medication chart, vital signs, and fluid balance). Versus Handover undertaken in an enclosed area located away from	Setting: mixed adult and paediatric ED of a teaching hospital in Australia. n=126 nurse surveys n=368 medical records and patient observations	Avoidable adverse events (CRITICAL) - medications administered as prescribed.	Population indirectness (includes paediatric patients).

Study	Intervention and comparison	Population	Outcomes	Comments
	the clinical area, carried out by the nurse in charge of the outgoing shift to those on the incoming shift; generally occurring 3 times per day.			
Zou 2016 ¹²⁶ Before and after study	Standard nursing handoff form including patient name, medical record number, diagnosis, signs/symptoms, abnormal test results, care plan 'to do' tasks, scheduled tests/procedures, fall risk, oxygen therapy and catheter. Oral report given by outgoing nurses at nursing station, then bedside handoffs. Head nurse supervised each handoff process. Versus Verbal nursing handoffs at the nursing station at shift change time; occasionally bedside handoffs for critical patients; information transferred was incomplete and unsystematic.	Admissions to the medical unit of a tertiary general hospital in China. Pre-intervention: n=1963 Post-intervention: n=1970	Avoidable adverse events (CRITICAL) - handoffs-related errors.	None.

Table 3: Clinical evidence summary: Intensive Care Unit

Outcomes	No of Participants (studies) Follow up	Quality of the evidence (GRADE)	Relative effect (95% CI)	Anticipated absolute effects	
				Risk with Unstructured handover	Risk difference with structured handover (95% CI)
Mortality	778 (1 study)	⊕⊕⊕⊕ VERY LOW ^{a,b} due to risk of bias, imprecision	RR 0.71 (0.43 to 1.17)	Moderate	
				85 per 1000	26 fewer per 1000 (from 48 fewer to 14 more)
Re-admission <48hours	820 (1 study)	⊕⊕⊕⊕ VERY LOW ^{a,b} due to risk of bias, imprecision	RR 1.35 (0.7 to 2.63)	Moderate	
				36 per 1000	13 more per 1000 (from 11 fewer to 59 more)
ICU Length of Stay	820 (1 study)	⊕⊕⊕⊕ VERY LOW ^a due to risk of bias	-	-	The mean length of stay in the intervention groups was 2.78 lower (4.68 to 0.88 lower)
Staff satisfaction	114 (1 study)	⊕⊕⊕⊕ VERY LOW ^a due to risk of bias	RR 3.09 (1.7 to 5.61)	Moderate	
				182 per 1000	380 more per 1000 (from 127 more to 839 more)
Staff satisfaction - Attending Physician	22 (1 study)	⊕⊕⊕⊕ VERY LOW ^{a,b} due to risk of bias, imprecision	RR 3 (0.77 to 11.74)	Moderate	
				182 per 1000	364 more per 1000 (from 42 fewer to 1000 more)
Staff satisfaction – Fellows	32 (1 study)	⊕⊕⊕⊕ VERY LOW ^{a,b} due to risk of bias, imprecision	RR 0.86 (0.37 to 1.99)	Moderate	
				438 per 1000	61 fewer per 1000 (from 276 fewer to 434 more)
Staff satisfaction – Nurses	60 (1 study)	⊕⊕⊕⊕ VERY LOW ^a due to risk of bias	RR 11 (2.83 to 42.7)	Moderate	
				67 per 1000	670 more per 1000 (from 123 more to 1000 more)

- (a) All non-randomised studies automatically downgraded due to selection bias. Studies may be further downgraded by 1 increment if other factors suggest additional high risk of bias, or 2 increments if other factors suggest additional very high risk of bias
- (b) Downgraded by 1 increment if the confidence interval crossed one MID or by 2 increments if the confidence interval crossed both MIDs.

Table 4: Clinical evidence summary: Neurological Care Unit

Outcomes	No of Participants (studies) Follow up	Quality of the evidence (GRADE)	Relative effect (95% CI)	Anticipated absolute effects	
				Risk with Normal handover	Risk difference with structured handover (95% CI)
ICU Readmission	261 (1 study)	⊕⊖⊖⊖ VERY LOW ^{a,b} due to risk of bias, imprecision	RR 1.24 (0.34 to 4.52)	Moderate 31 per 1000	7 more per 1000 (from 20 fewer to 109 more)
Rapid Response Team Call at 6 Months	261 (1 study)	⊕⊖⊖⊖ VERY LOW ^{a,b} due to risk of bias, imprecision	RR 1.98 (0.37 to 10.65)	Moderate 15 per 1000	15 more per 1000 (from 9 fewer to 145 more)

- (a) Downgraded by 1 increment if the majority of the evidence was at high risk of bias, and downgraded by 2 increments if the majority of the evidence was at very high risk of bias.
- (b) Downgraded by 1 increment if the confidence interval crossed one MID or by 2 increments if the confidence interval crossed both MIDs.

Table 5: Clinical evidence summary: Emergency Department

Outcomes	No of Participants (studies) Follow up	Quality of the evidence (GRADE)	Relative effect (95% CI)	Anticipated absolute effects	
				Risk with Routine handover	Risk difference with Electronic handover (95% CI)
Staff satisfaction	1136 (1 study)	⊕⊖⊖⊖ VERY LOW ^a due to risk of bias	-	-	The mean staff satisfaction in the intervention groups was 0.17 higher (0.33 lower to 0.67 higher)
Avoidable adverse events (medications administered as prescribed)	279 (1 study)	⊕⊖⊖⊖ VERY LOW ^a due to risk of bias	RR 1.01 (0.98 to 1.04)	Moderate 977 per 1000	10 more per 1000 (from 20 fewer to 39 more)

(a) All non-randomised studies automatically downgraded due to selection bias. Studies may be further downgraded by 1 increment if other factors suggest additional high risk of bias, or 2 increments if other factors suggest additional very high risk of bias

Table 6: Clinical evidence summary: Internal Medicine

Outcomes	No of Participants (studies) Follow up	Quality of the evidence (GRADE)	Relative effect (95% CI)	Anticipated absolute effects	
				Risk with Normal handover	Risk difference with Electronic handover (95% CI)
Critical data omissions	48 (1 study)	⊕⊕⊕⊕ VERY LOW ^a due to risk of bias	Peto OR 0.04 (0.01 to 0.14)	Moderate 793 per 1000	660 fewer per 1000 (from 444 fewer to 756 fewer)
Near Misses	58 (1 study)	⊕⊕⊕⊕ VERY LOW ^a due to risk of bias	Peto OR 0.18 (0.04 to 0.8)	Moderate 231 per 1000	180 fewer per 1000 (from 37 fewer to 219 fewer)
Adverse events	58 (1 study)	⊕⊕⊕⊕ VERY LOW ^{a,b} due to risk of bias, imprecision	Peto OR 0.21 (0.02 to 1.78)	Moderate 103 per 1000	79 fewer per 1000 (from 101 fewer to 67 more)
Avoidable adverse events (handoffs related errors)	3933 (1 study)	⊕⊕⊕⊕ VERY LOW ^a due to risk of bias	RR 0.09 (0.04 to 0.23)	Moderate 27 per 1000	25 fewer per 1000 (from 21 fewer to 26 fewer)

(a) All non-randomised studies automatically downgraded due to selection bias. Studies may be further downgraded by 1 increment if other factors suggest additional high risk of bias, or 2 increments if other factors suggest additional very high risk of bias

(b) Downgraded by 1 increment if the confidence interval crossed one MID or by 2 increments if the confidence interval crossed both MIDs.

1 **32.4 Economic evidence**

2 **Published literature**

3 One economic evaluation was identified with the relevant comparison and has been included in this
4 review¹²⁵. This study is summarised in the economic evidence profile below (Table 7) and the
5 economic evidence tables in Appendix E.

6 The economic article selection protocol and flow chart for the whole guideline can found in the
7 guideline's Appendix 41A and Appendix 41B.

Table 7: Economic evidence profile: Structured patient handover versus usual care

Study	Applicability	Limitations	Other comments	Incremental cost	Incremental effects	Cost effectiveness	Uncertainty
Yao 2012 ¹²⁵	Partially applicable ^(a)	Potentially serious limitations ^(b)	Retrospective observational study Cost-utility analysis Population: Patients discharged from hospital to the community Two comparators: 1) Usual care 2) Structured patient handover between hospital and community (HANDOVER project) Time horizon: 1 year	Total costs (per patient discharge): £1.86	QALYs (per patient discharge): 0.0103	£180.34 per QALY gained	The study looked at different levels of effectiveness for the intervention to find changing points in cost-effectiveness at a €20,000 threshold.

Abbreviations: ICER: incremental cost-effectiveness ratio; QALY: quality-adjusted life years; RCT: randomised controlled trial

(a) Some uncertainty regarding the applicability of resource use and costs from the Netherlands (2011) to current NHS context. Costs from multiple published studies. No discounting reported.

(b) Quality-of-life estimated by categorising adverse events and allocating to an indicative state from the EQ-5D. Health outcomes based on estimates and assumptions of preventable adverse events. Effectiveness of the intervention elicited from experts.

1 32.5 Evidence statements

2 Clinical

3 Intensive care unit

4 One study comprising 820 people evaluated the role of structured patient handover within the
5 intensive care unit setting for improving outcomes in secondary care in adults and young people at
6 risk of an AME, or with a suspected or confirmed AME. The evidence suggested that structured
7 patient handovers provide a benefit in reduced mortality, length of stay and improved staff
8 satisfaction (overall, nurse satisfaction and attending physician). However, the evidence suggested
9 there was no effect on readmission (very low quality for all outcomes) and a reduction in staff
10 satisfaction by fellows.

11 Neurointensive care unit

12 One study comprising 261 people evaluated the role of structured patient handover within the
13 neurointensive care unit setting for improving outcomes in secondary care in adults and young
14 people at risk of an AME, or with a suspected or confirmed AME. The evidence suggested that
15 structured patient handovers have no effect on ICU readmission and avoidable adverse events
16 defined as rapid response team call at 6 months (very low quality for both outcomes).

17 Emergency department

18 Two studies comprising 1415 people evaluated the role of structured patient handover within the
19 emergency department setting for improving outcomes in secondary care in adults and young people
20 at risk of an AME, or with a suspected or confirmed AME. The evidence suggested that structured
21 patient handovers have no effect on staff satisfaction (1 study, very low quality) or avoidable adverse
22 events defined as medications not administered as prescribed (1 study, very low quality).

23 Internal medicine

24 Two studies comprising 3991 people evaluated the role of structured patient handover within the
25 internal medicine setting for improving outcomes in secondary care in adults and young people at
26 risk of an AME, or with a suspected or confirmed AME. The evidence suggested that structured
27 patient handovers may provide a benefit in reduced avoidable adverse events defined as critical data
28 omissions, near misses, adverse events and handoffs related errors (1 study, very low quality).

29 Economic

30 One cost-utility analysis found that structured handover was cost effective compared to usual care
31 for patients discharged from hospital to the community (ICER: £180 per QALY gained). This analysis
32 was assessed as partially applicable with potentially serious limitations.

33

34

1 32.6 Recommendations and link to evidence

Recommendations	19. Use structured handovers during transitions of care and follow the recommendations on transferring patients in the NICE guideline on acutely ill patients in hospital.
Research recommendations	-
Relative values of different outcomes	Mortality, avoidable adverse events (including prescribing errors, errors of omission, cardiopulmonary resuscitation, unplanned admission to intensive care, delayed or missed investigations and delayed or missed treatment), patient and/or carer satisfaction, length of stay and quality of life were considered critical outcomes by the guideline committee. Staff satisfaction was considered an important outcome by the committee.
Trade-off between benefits and harms	<p>Six studies were considered in the clinical review. The committee noted the variation in interventions and heterogeneity in how the intervention was delivered (that is, some were structured electronic forms while other studies just documented a handover process). Therefore, the results for each study were presented by setting and not meta-analysed.</p> <p><u>Mixed medical and Surgical ICU</u></p> <p>The evidence suggested that structured patient handovers may provide a benefit in reduced mortality, length of stay, improved senior clinical staff satisfaction and nurse satisfaction. The evidence suggested there was no effect on readmission and a reduced staff satisfaction for fellows.</p> <p>The group discussed the decreased staff satisfaction of junior doctors (compared to senior doctors and nurses) with a structured handover but suggested that this may be due to the imbalanced amount of time placed on junior doctors in the handover process. Overall, the evidence suggested a benefit of structured patient handover in the intensive care unit setting. There was no evidence for quality of life or patient and/or carer satisfaction.</p> <p><u>Neurological care unit</u></p> <p>The evidence suggested that structured patient handovers have no effect on readmission and avoidable adverse events defined as a rapid response team. The committee noted that this evidence was from 1 small study reporting for 1 unit and both outcomes were very low quality. There was no evidence for mortality, quality of life, patient and/or carer satisfaction, staff satisfaction or length of stay.</p> <p><u>Emergency department</u></p> <p>The evidence suggested that structured patient handovers have no effect on staff satisfaction or avoidable adverse events defined as medications not administered as prescribed. There was no evidence for mortality, quality of life, patient and/or carer satisfaction or length of stay.</p> <p><u>Internal Medicine</u></p> <p>The evidence suggested that structured patient handovers may provide a benefit in reduced avoidable adverse events defined as critical data omissions, near misses, adverse events and handoffs-related errors. The committee discussed the reductions in avoidable adverse events with the structured handover and suggested this may be due to the multi-factorial nature of the intervention. In this case it was a verbal (face-to-face) handover with an electronic sign-off sheet compared to no structured</p>

<p>Recommendations</p>	<p>19. Use structured handovers during transitions of care and follow the recommendations on transferring patients in the NICE guideline on acutely ill patients in hospital.</p>
<p>Research recommendations</p>	<p>-</p>
	<p>handover. There was no evidence for mortality, quality of life, patient and/or carer satisfaction, staff satisfaction or length of stay.</p> <p>Overall, the committee considered that structured handovers were associated with improvement in patient outcomes and staff satisfaction and should be part of current patient care. They discussed the evidence with regards to their own clinical experience and decided to support a strong recommendation for structured handovers for an AME population.</p> <p>They noted that while structured handovers could become a ‘tick box’ process and could lead to reduced communication both between healthcare professionals and with patients, when conducted properly a formal structure for exchanging information would improve outcomes. The committee discussed the best type of structured handover but the evidence was not strong enough to make a recommendation on a particular handover model.</p>
<p>Trade-off between net effects and costs</p>	<p>A single study conducting a cost-utility analysis was included. The intervention included an online database with handover tools, shared staff experience of handovers and online staff training. As well as the online resource, the intervention required staff time to undertake classroom education in patient handovers. The study showed structured patient handovers between the hospital and community are cost-effective at £180 per QALY, significantly under the £20,000 threshold. Quality of life was not measured in a trial. Instead quality of life scores were estimated by categorising adverse events into groups and assigning the groups to an indicative state. However, the committee felt that the intervention would have low costs and for this reason, it would only need to have a small benefit to be cost-effective. There was evidence for this in the analysis, with the study showing the intervention only needing to be 1.6% effective at reducing preventable adverse events to be cost-effective. The transition between hospital and community would most likely involve more intensive handovers than those within a hospital. Therefore, the cost-effectiveness results might be extrapolated to other areas of patient handover, such as between staff members or shifts, wards and different hospitals.</p> <p>There was no evidence around the type of structured patient handover, for example, electronic, paper or verbal. It seems unlikely that there would be a large difference in the cost-effectiveness of the different structures. However, there was evidence in the clinical review of change in resource use for structured patient handover. One study outlined a change in shift patterns, increasing the shift duration of junior doctors to undertake structured handovers and adding further costs to the intervention. There was also evidence that structured handovers reduced the length of stay for patients in the ICU, freeing up resources and decreasing costs as a result of the intervention. The committee concluded that there may be an increase in staff time associated with structured handover but this would potentially be offset by reduced length of stay and clinical errors avoided.</p>
<p>Quality of evidence</p>	<p><u>Clinical evidence</u></p> <p>For all comparisons the clinical evidence was considered to be very low quality due to the study type (observational or before and after), risk of bias (outcome reporting) and imprecision. In particular, the subgroup noted the composite outcomes reported</p>

<p>Recommendations</p>	<p>19. Use structured handovers during transitions of care and follow the recommendations on transferring patients in the NICE guideline on acutely ill patients in hospital.</p>
<p>Research recommendations</p>	<p>-</p>
	<p>as adverse effects and how these were reported poorly by most studies.</p> <p><u>Economic evidence</u></p> <p>The included economic study was deemed partially applicable because resource use and costs were from the Netherlands. It was also assessed to have potentially serious limitations because the effectiveness of the intervention was elicited from experts, rather than being based on a trial.</p>
<p>Other considerations</p>	<p>The committee noted that electronic systems for patient handovers could provide benefits in terms of documenting and identifying trends, in data analysis and audit, sharing information between different members of the multidisciplinary team, and in preserving patient confidentiality. Important contextual modifiers may include training, shift length and the quality of electronic systems.</p> <p>The committee highlighted that structured handover of care between transferring and receiving teams is well established within NHS current practice and is reinforced by related NICE guidance (CG50)¹⁵ and the Acute Care RCP Toolkit¹⁰¹.</p> <p>Currently, structured handover practice takes place through a range of methods including updated written lists, electronic and verbal face-to-face and this varies between departments and hospitals. However, standardisation across trusts is not common and would be difficult to implement. It is also important to understand that the ability to deliver a structured handover does not come naturally and training is vital to ensure that the benefits are realised. Handover is not just a simple matter of imparting information. It is about providing the required information in a format that is useful and beneficial to patient care. One key issue in the training is to ensure staff understand the importance of a good handover in delivering good patient care. Electronic systems would entail some training, resources to obtain and modify or develop the system and a change in the nature of the shift.</p> <p>The committee noted that it is important to provide a structured handover between primary and secondary care as this is a point of escalation. Therefore, there was scope for further research in this area covering the bridge between secondary and primary care.</p>

1
2

References

- 1 Evidence appraisal of Salzwedel C, Bartz HJ, Kuhnelt I, et al. The effect of a checklist on the quality of post-anaesthesia patient handover: a randomized controlled trial.: *Int J Qual Health Care*. 2013;25(2):176-181. *AORN Journal*. 2016; 104(2):174-179
- 2 Abraham J, Kannampallil T, Patel B, Almoosa K, Patel VL. Ensuring patient safety in care transitions: an empirical evaluation of a Handoff Intervention Tool. *AMIA*. 2012;17-26
- 3 Abraham J, Kannampallil T, Patel VL. A systematic review of the literature on the evaluation of handoff tools: implications for research and practice. *Journal of the American Medical Informatics Association*. 2014; 21(1):154-162
- 4 Abraham J, Kannampallil TG, Almoosa KF, Patel B, Patel VL. Comparative evaluation of the content and structure of communication using two handoff tools: implications for patient safety. *Journal of Critical Care*. 2014; 29(2):311-317
- 5 Ah-Kye L, Moore M. A simple prioritisation system to improve the electronic handover. *BMJ Quality Improvement Reports*. 2015; 4(1)
- 6 Ahmed J, Mehmood S, Rehman S, Ilyas C, Khan LUR. Impact of a structured template and staff training on compliance and quality of clinical handover. *International Journal of Surgery*. 2012; 10(9):571-574
- 7 Anderson J, Malone L, Shanahan K, Manning J. Nursing bedside clinical handover - an integrated review of issues and tools. *Journal of Clinical Nursing*. 2015; 24(5-6):662-671
- 8 Arora VM, Manjarrez E, Dressler DD, Basaviah P, Halasyamani L, Kripalani S. Hospitalist handoffs: a systematic review and task force recommendations. *Journal of Hospital Medicine*. 2009; 4(7):433-440
- 9 Barnes SL, Campbell DA, Stockman KA, Wunderlink D. From theory to practice of electronic handover. *Australian Health Review*. 2011; 35(3):384-391
- 10 Berkenstadt H, Haviv Y, Tuval A, Shemesh Y, Megrill A, Perry A et al. Improving handoff communications in critical care: utilizing simulation-based training toward process improvement in managing patient risk. *Chest*. 2008; 134(1):158-162
- 11 Blaz JW, Staggers N. The format of standard tools for nursing handoff: an integrative review. *Nursing Informatics*. 2012; 2012:23
- 12 Bost N, Crilly J, Wallis M, Patterson E, Chaboyer W. Clinical handover of patients arriving by ambulance to the emergency department - a literature review. *International Emergency Nursing*. 2010; 18(4):210-220
- 13 Brown E, Jarrett H, Churchhouse G, Hartley M, Cohen D, Kyprianou K et al. Improving phlebotomy handover of untaken blood tests to junior doctors. *BMJ Quality Improvement Reports*. 2015; 4(1)
- 14 Bump GM, Bost JE, Buranosky R, Elnicki M. Faculty member review and feedback using a sign-out checklist: improving intern written sign-out. *Academic Medicine*. 2012; 87(8):1125-1131

- 1 15 Centre for Clinical Practice at NICE. Acutely ill patients in hospital: recognition of and response to
2 acute illness in adults in hospital. NICE clinical guideline 50. London. National Institute of Health
3 and Clinical Excellence, 2007. Available from: <http://guidance.nice.org.uk/CG50>
- 4 16 Christie P, Robinson H. Using a communication framework at handover to boost patient
5 outcomes. *Nursing Times*. 2009; 105(47):13-15
- 6 17 Chu ES, Reid M, Schulz T, Burden M, Mancini D, Ambardekar AV et al. A structured handoff
7 program for interns. *Academic Medicine*. 2009; 84(3):347-352
- 8 18 Cohen MD, Hilligoss PB. The published literature on handoffs in hospitals: deficiencies identified
9 in an extensive review. *Quality and Safety in Health Care*. 2010; 19(6):493-497
- 10 19 Collins SA, Stein DM, Vawdrey DK, Stetson PD, Bakken S. Content overlap in nurse and physician
11 handoff artifacts and the potential role of electronic health records: a systematic review. *Journal*
12 *of Biomedical Informatics*. 2011; 44(4):704-712
- 13 20 Coon EA, Kramer NM, Fabris RR, Burkholder DB, Klaas JP, Graff-Radford J et al. Structured
14 handoff checklists improve clinical measures in patients discharged from the neurointensive care
15 unit. *Neurology: Clinical Practice*. 2015; 5(1):42-49
- 16 21 Cornell P, Gervis MT, Yates L, Vardaman JM. Impact of SBAR on nurse shift reports and staff
17 rounding. *Medsurg Nursing*. 2014; 23(5):334-342
- 18 22 Craig SR, Smith HL, Downen AM, Yost WJ. Evaluation of patient handoff methods on an inpatient
19 teaching service. *Ochsner Journal*. 2012; 12(4):331-337
- 20 23 Curtis O, Fisher R. Improving medical SHO weekend handover at a tertiary referral centre. *BMJ*
21 *Quality Improvement Reports*. 2013; 2(1)
- 22 24 Dawson S, King L, Grantham H. Review article: Improving the hospital clinical handover between
23 paramedics and emergency department staff in the deteriorating patient. *EMA - Emergency*
24 *Medicine Australasia*. 2013; 25(5):393-405
- 25 25 Dhillon P, Murphy RKJ, Ali H, Burukan Z, Corrigan MA, Sheikh A et al. Development of an adhesive
26 surgical ward round checklist: a technique to improve patient safety. *Irish Medical Journal*. 2011;
27 104(10):303-305
- 28 26 Dixon JL, Stagg HW, Wehbe-Janek H, Jo C, Culp WCJ, Shake JG. A standard handoff improves
29 cardiac surgical patient transfer: operating room to intensive care unit. *Journal for Healthcare*
30 *Quality*. 2015; 37(1):22-32
- 31 27 Donnelly MJ, Clauser JM, Tractenberg RE. A multicenter intervention to improve ambulatory care
32 handoffs at the end of residency. *Journal of Graduate Medical Education*. 2014; 6(1):112-116
- 33 28 Donnelly MJ, Clauser JM, Weissman NJ. An intervention to improve ambulatory care handoffs at
34 the end of residency. *Journal of Graduate Medical Education*. 2012; 4(3):381-384
- 35 29 Dowding D. Examining the effects that manipulating information given in the change of shift
36 report has on nurses' care planning ability. *Journal of Advanced Nursing*. 2001; 33(6):836-846
- 37 30 Downey LV, Zun L, Burke T. What constitutes a good hand offs in the emergency department: a
38 patient's perspective. *International Journal of Health Care Quality Assurance*. 2013; 26(8):760-
39 767

- 1 31 Drach-Zahavy A, Hadid N. Nursing handovers as resilient points of care: linking handover
2 strategies to treatment errors in the patient care in the following shift. *Journal of Advanced*
3 *Nursing*. 2015; 71(5):1135-1145
- 4 32 Dubosh NM, Carney D, Fisher J, Tibbles CD. Implementation of an emergency department sign-
5 out checklist improves transfer of information at shift change. *Journal of Emergency Medicine*.
6 2014; 47(5):580-585
- 7 33 Dufault M, Duquette CE, Ehmann J, Hehl R, Lavin M, Martin V et al. Translating an evidence-
8 based protocol for nurse-to-nurse shift handoffs. *Worldviews on Evidence-Based Nursing*. 2010;
9 7(2):59-75
- 10 34 Emlet LL, Al-Khafaji A, Kim YH, Venkataraman R, Rogers PL, Angus DC. Trial of shift scheduling
11 with standardized sign-out to improve continuity of care in intensive care units. *Critical Care*
12 *Medicine*. 2012; 40(12):3129-3134
- 13 35 Evans AS, Yee MS, Hogue CW. Often overlooked problems with handoffs: from the intensive care
14 unit to the operating room. *Anesthesia and Analgesia*. 2014; 118(3):687-689
- 15 36 Field TS, Tjia J, Mazor KM, Donovan JL, Kanaan AO, Harrold LR et al. Randomized trial of a
16 warfarin communication protocol for nursing homes: an SBAR-based approach. *American Journal*
17 *of Medicine*. 2011; 124(2):179-7
- 18 37 Flanagan ME, Patterson ES, Frankel RM, Doebbeling BN. Evaluation of a physician informatics
19 tool to improve patient handoffs. *Journal of the American Medical Informatics Association*. 2009;
20 16(4):509-515
- 21 38 Flemming D, Hubner U. How to improve change of shift handovers and collaborative grounding
22 and what role does the electronic patient record system play? Results of a systematic literature
23 review. *International Journal of Medical Informatics*. 2013; 82(7):580-592
- 24 39 Foster S, Manser T. The effects of patient handoff characteristics on subsequent care: a
25 systematic review and areas for future research. *Academic Medicine*. 2012; 87(8):1105-1124
- 26 40 Gakhar B, Spencer AL. Using direct observation, formal evaluation, and an interactive curriculum
27 to improve the sign-out practices of internal medicine interns. *Academic Medicine*. 2010;
28 85(7):1182-1188
- 29 41 Gardiner TM, Marshall AP, Gillespie BM. Clinical handover of the critically ill postoperative
30 patient: an integrative review. *Australian Critical Care*. 2015; 28(4):226-234
- 31 42 Gonzalo JD, Yang JJ, Stuckey HL, Fischer CM, Sanchez LD, Herzig SJ. Patient care transitions from
32 the emergency department to the medicine ward: evaluation of a standardized electronic
33 signout tool. *International Journal for Quality in Health Care*. 2014; 26(4):337-347
- 34 43 Govier M, Medcalf P. Living for the weekend: electronic documentation improves patient
35 handover. *Clinical Medicine, Journal of the Royal College of Physicians of London*. 2012;
36 12(2):124-127
- 37 44 Graan SM, Botti M, Wood B, Redley B. Nursing handover from ICU to cardiac ward: standardised
38 tools to reduce safety risks. *Australian Critical Care*. 2016; 29(3):165-171

- 1 45 Graham KL, Marcantonio ER, Huang GC, Yang J, Davis RB, Smith CC. Effect of a systems
2 intervention on the quality and safety of patient handoffs in an internal medicine residency
3 program. *Journal of General Internal Medicine*. 2013; 28(8):986-993
- 4 46 Graham LA. Organization of rehabilitation services. *Handbook of Clinical Neurology*. 2013;
5 110:113-120
- 6 47 Halm MA. Nursing handoffs: ensuring safe passage for patients. *American Journal of Critical Care*.
7 2013; 22(2):158-162
- 8 48 Health Information and Quality Authority. Health technology assessment of the use of
9 information technology for early warning and clinical handover systems. Ireland. Dublin: Health
10 Information and Quality Authority, 2015. Available from: [https://www.hiqa.ie/healthcare/health-](https://www.hiqa.ie/healthcare/health-technology-assessment/new-assessments/it-early-warning)
11 [technology-assessment/new-assessments/it-early-warning](https://www.hiqa.ie/healthcare/health-technology-assessment/new-assessments/it-early-warning)
- 12 49 Hesselink G, Schoonhoven L, Barach P, Spijker A, Gademan P, Kalkman C et al. Improving patient
13 handovers from hospital to primary care: a systematic review. *Annals of Internal Medicine*. 2012;
14 157(6):417-428
- 15 50 Hill CE, Varma P, Lenrow D, Price RS, Kasner SE. Reducing errors in transition from acute stroke
16 hospitalization to inpatient rehabilitation. *Frontiers in Neurology*. 2015; 6:227
- 17 51 Iedema R, Ball C, Daly B, Young J, Green T, Middleton PM et al. Design and trial of a new
18 ambulance-to-emergency department handover protocol: 'IMIST-AMBO'. *BMJ Quality & Safety*.
19 2012; 21(8):627-633
- 20 52 Jensen SM, Lippert A, Ostergaard D. Handover of patients: a topical review of ambulance crew to
21 emergency department handover. *Acta Anaesthesiologica Scandinavica*. 2013; 57(8):964-970
- 22 53 Johnson M, Sanchez P, Zheng C. The impact of an integrated nursing handover system on nurses'
23 satisfaction and work practices. *Journal of Clinical Nursing*. 2016; 25(1-2):257-268
- 24 54 Kaufmann J, Twite M, Barrett C, Peyton C, Koehler J, Rennie M et al. A handoff protocol from the
25 cardiovascular operating room to cardiac ICU is associated with improvements in care beyond
26 the immediate postoperative period. *Joint Commission Journal on Quality and Patient Safety*.
27 2013; 39(7):306-311
- 28 55 Keebler JR, Lazzara EH, Patzer BS, Palmer EM, Plummer JP, Smith DC et al. Meta-analyses of the
29 effects of standardized handoff protocols on patient, provider, and organizational outcomes.
30 *Human Factors*. 2016; 58(8):1187-1205
- 31 56 Keenan G, Yakel E, Marriott D. HANDS: a revitalized technology supported care planning method
32 to improve nursing handoffs. *Studies in Health Technology and Informatics*. 2006; 122:580-584
- 33 57 Kerr D, Klim S, Kelly AM, McCann T. Impact of a modified nursing handover model for improving
34 nursing care and documentation in the emergency department: a pre- and post-implementation
35 study. *International Journal of Nursing Practice*. 2016; 22(1):89-97
- 36 58 Kessler C, Williams MC, Moustoukas JN, Pappas C. Transitions of care for the geriatric patient in
37 the emergency department. *Clinics in Geriatric Medicine*. 2013; 29(1):49-69
- 38 59 Kitson AL, Muntlin Athlin A, Elliott J, Cant ML. What's my line? A narrative review and synthesis of
39 the literature on Registered Nurses' communication behaviours between shifts. *Journal of*
40 *Advanced Nursing*. 2014; 70(6):1228-1242

- 1 60 Kochendorfer KM, Morris LE, Kruse RL, Ge BG, Mehr DR. Attending and resident physician
2 perceptions of an EMR-generated rounding report for adult inpatient services. *Family Medicine*.
3 2010; 42(5):343-349
- 4 61 Kuhn EN, Davis MC, Agee BS, Oster RA, Markert JM. Effect of resident handoffs on length of
5 hospital and intensive care unit stay in a neurosurgical population: a cohort study. *Journal of*
6 *Neurosurgery*. 2016; 125(1):222-228
- 7 62 Lamond D. The information content of the nurse change of shift report: a comparative study.
8 *Journal of Advanced Nursing*. 2000; 31(4):794-804
- 9 63 Lee LH, Levine JA, Schultz HJ. Utility of a standardized sign-out card for new medical interns.
10 *Journal of General Internal Medicine*. 1996; 11(12):753-755
- 11 64 Li P, Ali S, Tang C, Ghali WA, Stelfox HT. Review of computerized physician handoff tools for
12 improving the quality of patient care. *Journal of Hospital Medicine*. 2013; 8(8):456-463
- 13 65 Malekzadeh J, Mazluom SR, Etezadi T, Tasseri A. A standardized shift handover protocol:
14 improving nurses' safe practice in intensive care units. *Journal of Caring Sciences*. 2013; 2(3):177-
15 185
- 16 66 Manser T. Fragmentation of patient safety research: a critical reflection of current human factors
17 approaches to patient handover. *Journal of Public Health Research*. 2013; 2(3):e33
- 18 67 Manser T, Foster S. Effective handover communication: an overview of research and
19 improvement efforts. *Best Practice and Research Clinical Anaesthesiology*. 2011; 25(2):181-191
- 20 68 Mardis T, Mardis M, Davis J, Justice EM, Riley Holdinsky S, Donnelly J et al. Bedside shift-to-shift
21 handoffs: a systematic review of the literature. *Journal of Nursing Care Quality*. 2016; 31(1):54-60
- 22 69 Mascioli S, Laskowski-Jones L, Urban S, Moran S. Improving handoff communication. *Nursing*.
23 2009; 39(2):52-55
- 24 70 Matic J, Davidson PM, Salamonson Y. Review: bringing patient safety to the forefront through
25 structured computerisation during clinical handover. *Journal of Clinical Nursing*. 2011; 20(1-
26 2):184-189
- 27 71 McQuillan A, Carthey J, Catchpole K, McCulloch P, Ridout DA, Goldman AP. Republished: creating
28 a safe, reliable hospital at night handover: a case study in implementation science. *Postgraduate*
29 *Medical Journal*. 2014; 90(1067):493-501
- 30 72 Moller TP, Madsen MD, Fuhrmann L, Ostergaard D. Postoperative handover: characteristics and
31 considerations on improvement: a systematic review. *European Journal of Anaesthesiology*.
32 2013; 30(5):229-242
- 33 73 Moseley BD, Smith JH, Diaz-Medina GE, Paz Soldan MM, Wicklund M, Dhamija R et al.
34 Standardized sign-out improves completeness and perceived accuracy of inpatient neurology
35 handoffs. *Neurology*. 2012; 79(10):1060-1064
- 36 74 Mueller S, Patel R, O'Toole J, Schnipper J. Best practices in inpatient handoffs of care. *Hospital*
37 *Medicine Clinics*. 2016; 5(4):518-528
- 38 75 Nakagawa H, Sakuramoto H, Unoki T, Yoshino Y, Yamaguchi S. 923: positive effects of the handoff
39 sheet system on pain management. *Critical Care Medicine*. 2016; 44(12 Suppl 1):307

- 1 76 Nakhleh RE. Error reduction in surgical pathology. *Archives of Pathology and Laboratory*
2 *Medicine*. 2006; 130(5):630-632
- 3 77 National Patients Safety Agency. Safe handover: safe patients. Guidance on clinical handover for
4 clinicians and managers. London. British Medical Association, 2004. Available from:
5 <https://www.bma.org.uk/-/media/Files/.../safe%20handover%20safe%20patients.pdf>
- 6 78 O'Byrne WTI, Weavind L, Selby J. The science and economics of improving clinical
7 communication. *Anesthesiology Clinics*. 2008; 26(4):729-744
- 8 79 Ong MS, Coiera E. A systematic review of failures in handoff communication during intrahospital
9 transfers. *Joint Commission Journal on Quality and Patient Safety*. 2011; 37(6):274-284
- 10 80 Organisation for Economic Co-operation and Development (OECD). Purchasing power parities
11 (PPP), 2007. Available from: <http://www.oecd.org/std/ppp>
- 12 81 Palmer E, Richardson E, Newcombe H, Borg CM. The F.R.I.D.A.Y.S. checklist - preparing our
13 patients for a safe weekend. *BMJ Quality Improvement Reports*. 2014; 2(2)
- 14 82 Patel R, Thiagarajan P. Structured approach in improving weekend handovers in a medical high
15 dependency unit. *BMJ Quality Improvement Reports*. 2014; 3(1)
- 16 83 Patterson ES. Technology support of the handover: promoting observability, flexibility and
17 efficiency. *BMJ Quality & Safety*. 2012; 21(Suppl 1):i19-i21
- 18 84 Patterson ES, Wears RL. Patient handoffs: standardized and reliable measurement tools remain
19 elusive. *Joint Commission Journal on Quality and Patient Safety*. 2010; 36(2):52-61
- 20 85 Payne CE, Stein JM, Leong T, Dressler DD. Avoiding handover fumbles: a controlled trial of a
21 structured handover tool versus traditional handover methods. *BMJ Quality & Safety*. 2012;
22 21(11):925-932
- 23 86 Petrovic MA, Aboumatar H, Baumgartner WA, Ulatowski JA, Moyer J, Chang TY et al. Pilot
24 implementation of a perioperative protocol to guide operating room-to-intensive care unit
25 patient handoffs. *Journal of Cardiothoracic and Vascular Anesthesia*. 2012; 26(1):11-16
- 26 87 Phillips A. The effect of a standardized form in guiding communication between peers during the
27 hand-off of patients in a hospital setting. *Studies in Health Technology and Informatics*. 2009;
28 146:885
- 29 88 Pincavage AT, Dahlstrom M, Prochaska M, Ratner S, Beiting KJ, Oyler J et al. Results of an
30 enhanced clinic handoff and resident education on resident patient ownership and patient
31 safety. *Academic Medicine*. 2013; 88(6):795-801
- 32 89 Poore SO, Sillah NM, Mahajan AY, Gutowski KA. Patient safety in the operating room: II.
33 Intraoperative and postoperative. *Plastic and Reconstructive Surgery*. 2012; 130(5):1048-1058
- 34 90 Pothier D, Monteiro P, Mooktiar M, Shaw A. Pilot study to show the loss of important data in
35 nursing handover. *British Journal of Nursing*. 2005; 14(20):1090-1093
- 36 91 Pucher PH, Johnston MJ, Aggarwal R, Arora S, Darzi A. Effectiveness of interventions to improve
37 patient handover in surgery: a systematic review. *Surgery*. 2015; 158(1):85-95

- 1 92 Raduma-Tomas MA, Flin R, Yule S, Williams D. Doctors' handovers in hospitals: a literature
2 review. *BMJ Quality & Safety*. 2011; 20(2):128-133
- 3 93 Raiten JM, Lane-Fall M, Gutsche JT, Kohl BA, Fabbro M, Sophocles A et al. Transition of care in
4 the cardiothoracic intensive care unit: a review of handoffs in perioperative cardiothoracic and
5 vascular practice. *Journal of Cardiothoracic and Vascular Anesthesia*. 2015; 29(4):1089-1095
- 6 94 Raptis DA, Fernandes C, Chua W, Boulos PB. Electronic software significantly improves quality of
7 handover in a London teaching hospital. *Health Informatics Journal*. 2009; 15(3):191-198
- 8 95 Reid C, Moorthy C, Forshaw K. Referral patterns: an audit into referral practice among doctors in
9 emergency medicine. *Emergency Medicine Journal*. 2005; 22(5):355-358
- 10 96 Riesenber LA, Leitzsch J, Cunningham JM. Nursing handoffs: a systematic review of the
11 literature. *American Journal of Nursing*. 2010; 110(4):24-26
- 12 97 Riesenber LA, Leitzsch J, Little BW. Systematic review of handoff mnemonics literature.
13 *American Journal of Medical Quality*. 2009; 24(3):196-204
- 14 98 Riesenber LA, Leitzsch J, Massucci JL, Jaeger J, Rosenfeld JC, Patow C et al. Residents' and
15 attending physicians' handoffs: a systematic review of the literature. *Academic Medicine*. 2009;
16 84(12):1775-1787
- 17 99 Robertson ER, Morgan L, Bird S, Catchpole K, McCulloch P. Interventions employed to improve
18 intrahospital handover: a systematic review. *BMJ Quality & Safety*. 2014; 23(7):600-607
- 19 100 Royal College of Nursing. *The principles of nursing practice*. RCN Publishing; 2012
- 20 101 Royal College of Physicians. *Acute care toolkit 1: handover*. London: 2015. Available from:
21 <https://www.rcplondon.ac.uk/guidelines-policy/acute-care-toolkit-1-handover>
- 22 102 Ryan S, O'Riordan JM, Tierney S, Conlon KC, Ridgway PF. Impact of a new electronic handover
23 system in surgery. *International Journal of Surgery*. 2011; 9(3):217-220
- 24 103 Salzwedel C, Bartz HJ, Kuhnelt I, Appel D, Haupt O, Maisch S et al. The effect of a checklist on the
25 quality of post-anaesthesia patient handover: a randomized controlled trial. *International Journal*
26 *for Quality in Health Care*. 2013; 25(2):176-181
- 27 104 Segall N, Bonifacio AS, Barbeito A, Schroeder RA, Perfect SR, Wright MC et al. Operating room-to-
28 ICU patient handovers: a multidisciplinary human-centered design approach. *Joint Commission*
29 *Journal on Quality and Patient Safety*. 2016; 42(9):400-414
- 30 105 Segall N, Bonifacio AS, Schroeder RA, Barbeito A, Rogers D, Thornlow DK et al. Can we make
31 postoperative patient handovers safer? A systematic review of the literature. *Anesthesia and*
32 *Analgesia*. 2012; 115(1):102-115
- 33 106 Siefferman JW, Lin E, Fine JS. Patient safety at handoff in rehabilitation medicine. *Physical*
34 *Medicine and Rehabilitation Clinics of North America*. 2012; 23(2):241-257
- 35 107 Singer JI, Dean J. Emergency physician intershift handovers: an analysis of our transitional care.
36 *Pediatric Emergency Care*. 2006; 22(10):751-754
- 37 108 Staggers N, Blaz JW. Research on nursing handoffs for medical and surgical settings: an
38 integrative review. *Journal of Advanced Nursing*. 2013; 69(2):247-262

- 1 109 Starmer AJ, Spector ND, Srivastava R, West DC, Rosenbluth G, Allen AD et al. Changes in medical
2 errors after implementation of a handoff program. *New England Journal of Medicine*. 2014;
3 371(19):1803-1812
- 4 110 Stephens RS, Whitman GJR. Postoperative critical care of the adult cardiac surgical patient. Part I:
5 routine postoperative care. *Critical Care Medicine*. 2015; 43(7):1477-1497
- 6 111 Talbot R, Bleetman A. Retention of information by emergency department staff at ambulance
7 handover: do standardised approaches work? *Emergency Medicine Journal*. 2007; 24(8):539-542
- 8 112 Thompson JE, Collett LW, Langbart MJ, Purcell NJ, Boyd SM, Yuminaga Y et al. Using the ISBAR
9 handover tool in junior medical officer handover: a study in an Australian tertiary hospital.
10 *Postgraduate Medical Journal*. 2011; 87(1027):340-344
- 11 113 Till A, Sall H, Wilkinson J. Safe handover: safe patients - the electronic handover system. *BMJ*
12 *Quality Improvement Reports*. 2014; 2(2)
- 13 114 Timko C, Below M, Schultz NR, Brief D, Cucciare MA. Patient and program factors that bridge the
14 detoxification-treatment gap: a structured evidence review. *Journal of Substance Abuse*
15 *Treatment*. 2015; 52:31-39
- 16 115 Tucker A, Brandling J, Fox P. Improved record-keeping with reading handovers. *Nursing*
17 *Management*. 2009; 16(8):30-34
- 18 116 Usher MG, Fanning C, Wu D, Muglia C, Balonze K, Kim D et al. Information handoff and outcomes
19 of critically ill patients transferred between hospitals. *Journal of Critical Care*. 2016; 36:240-245
- 20 117 Van Eaton EG, Horvath KD, Lober WB, Rossini AJ, Pellegrini CA. A randomized, controlled trial
21 evaluating the impact of a computerized rounding and sign-out system on continuity of care and
22 resident work hours. *Journal of the American College of Surgeons*. 2005; 200(4):538-545
- 23 118 Van Eaton EG, McDonough K, Lober WB, Johnson EA, Pellegrini CA, Horvath KD. Safety of using a
24 computerized rounding and sign-out system to reduce resident duty hours. *Academic Medicine*.
25 2010; 85(7):1189-1195
- 26 119 van Sluisveld N, Hesselink G, van der Hoeven JG, Westert G, Wollersheim H, Zegers M. Improving
27 clinical handover between intensive care unit and general ward professionals at intensive care
28 unit discharge. *Intensive Care Medicine*. 2015; 41(4):589-604
- 29 120 Vines MM, Dupler AE, Van Son CR, Guido GW. Improving client and nurse satisfaction through
30 the utilization of bedside report. *Journal for Nurses in Professional Development*. 2014;
31 30(4):166-2
- 32 121 Walton H, Munro W. Improving the quality of handover by addressing handover culture and
33 introducing a new, multi-disciplinary, team-based handover meeting. *BMJ Quality Improvement*
34 *Reports*. 2015; 4(1)
- 35 122 Williamson A, Bradley A, Khan K. Using a simple handover to improve the timing of gentamicin
36 levels. *BMJ Quality Improvement Reports*. 2015; 4(1)
- 37 123 Wood K, Crouch R, Rowland E, Pope C. Clinical handovers between prehospital and hospital staff:
38 literature review. *Emergency Medicine Journal*. 2015; 32(7):577-581

1 124 World Health Organisation. Communication during patient hand-overs. Switzerland. WHO Press,
2 2007. Available from: <http://www.who.int/patientsafety/solutions/patientsafety/PS->
3 [Solution3.pdf](http://www.who.int/patientsafety/solutions/patientsafety/PS-Solution3.pdf)

4 125 Yao GL, Novielli N, Manaseki-Holland S, Chen Y-F, van der Klink M, Barach P et al. Evaluation of a
5 predevelopment service delivery intervention: an application to improve clinical handovers. *BMJ*
6 *Quality & Safety*. 2012; 21:i29-i38

7 126 Zou XJ, Zhang YP. Rates of nursing errors and handoffs-related errors in a medical unit following
8 implementation of a standardized nursing handoff form. *Journal of Nursing Care Quality*. 2016;
9 31(1):61-67

10

11

12

1 Appendices

2 Appendix A: Review protocol

3 **Table 8: Review protocol: Do structured patient handovers between healthcare professionals**
4 **improve outcomes?**

Review question	Structured patient handovers
Guideline condition and its definition	Acute medical emergencies.
Objectives	To see if structured means are better than unstructured for relaying patient information and to assess the best method for conducting handover for example, verbal, paper-based or electronic.
Review population	Adults and young people (16 years and over) with a suspected or confirmed AME (in all contexts not just secondary care).
	Adults.
	Line of therapy not an inclusion criterion.
Interventions and comparators: generic/class; specific/drug (All interventions will be compared with each other, unless otherwise stated)	Structured (planned framework as defined by the study) between healthcare professionals between shifts in acute settings; this will include (i) set times of the day, (ii) using a structured template or proforma for the handover (iii) recording the information in written or electronic form. Paper-based handover; using paper to conduct the structured handover. Verbal patient handover; verbally conducting the structured handover. Electronic-based handover; using electronic means to conduct the structured handover. Normal handover; routine unstructured handover.
Outcomes	- Mortality (Dichotomous) CRITICAL - Avoidable adverse events (prescribing errors [errors of omission or commission] cardiopulmonary resuscitation, unplanned admission to intensive care, delayed or missed investigations, delayed or missed treatments) (Dichotomous) CRITICAL - Quality of life (Continuous) CRITICAL - Patient/carer satisfaction (Continuous) CRITICAL - Length of stay (Continuous) CRITICAL - Staff satisfaction (Continuous) IMPORTANT
Study design	Systematic reviews (SRs) of RCTs, RCTs, observational studies only to be included if no relevant SRs or RCTs are identified.
Unit of randomisation	Patient Setting
Crossover study	Permitted
Minimum duration of study	Not defined
Other exclusions	Major trauma Structured reporting around major incidents (not applicable to individual) standardised criteria for admission and discharge covered by other questions.
Sensitivity/other analysis	If studies have pre-specified in their protocols that results for any of these subgroup populations will be analysed separately, then they will be included in the subgroup analysis.
Subgroup analyses if there is heterogeneity	- Frail elderly (Frail elderly; Not frail elderly); Population may differ - Critical care patients (Critical care patients; Not critical care patients);

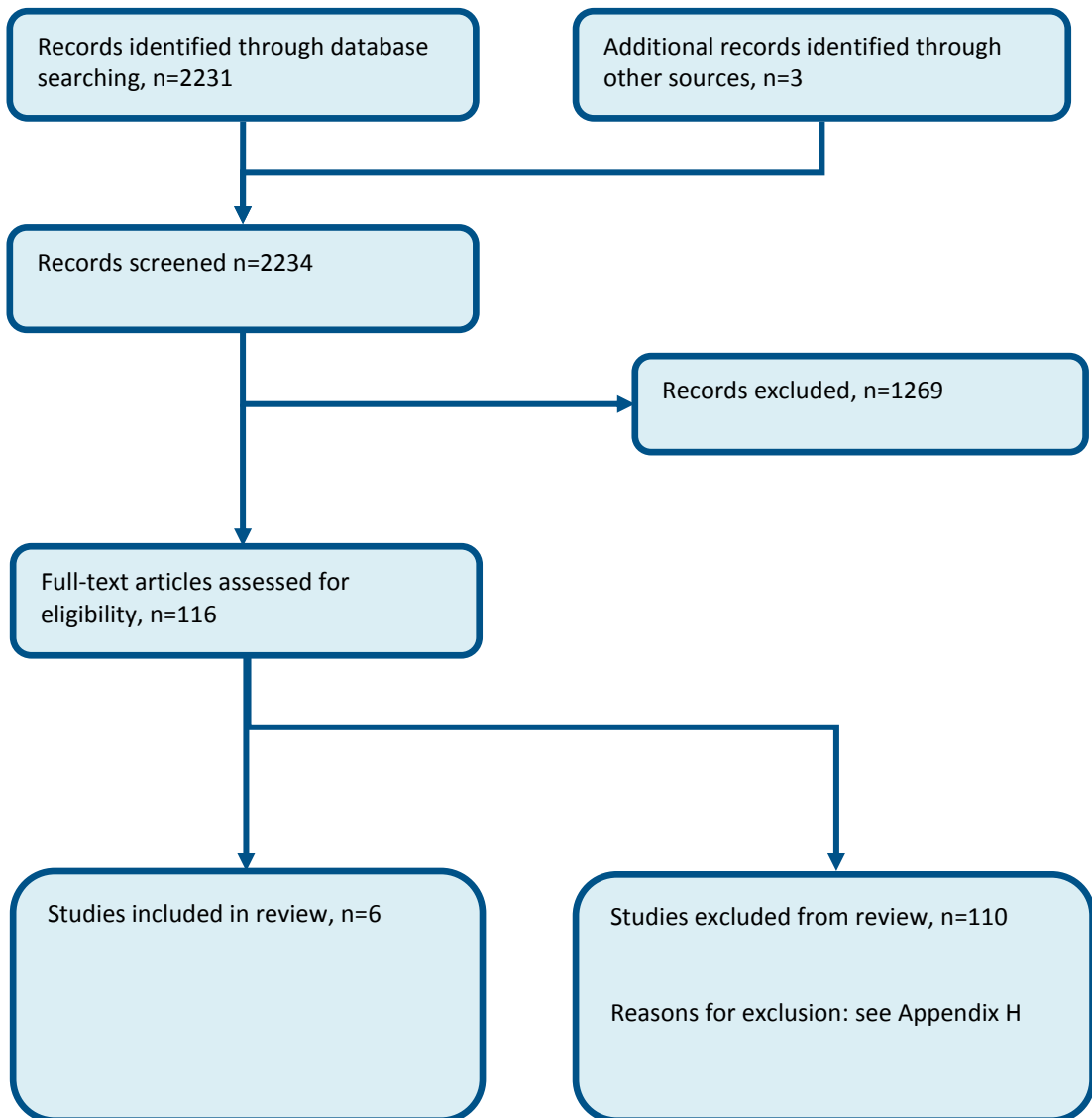
Review question	Structured patient handovers
	Population may differ - Speciality/profession (Inter-professional handover; Profession-specific handover); May differ but may be crossover
Search criteria	Databases: Medline, Embase, the Cochrane Library Date limits for search: 2005 Language: English

- 1
- 2
- 3
- 4
- 5

1

Appendix B: Clinical article selection

Figure 1: Flow chart of clinical article selection for the review of patient handover



2

3

4

1 Appendix C: Forest plots

2 C.1 Intensive Care Unit

Figure 2: Mortality

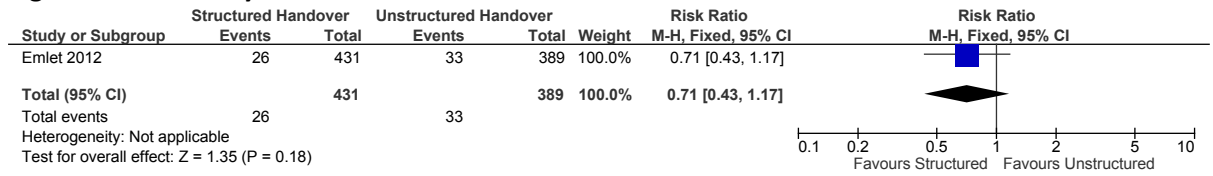
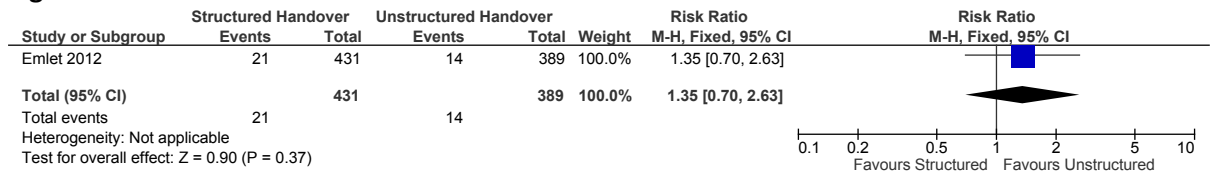
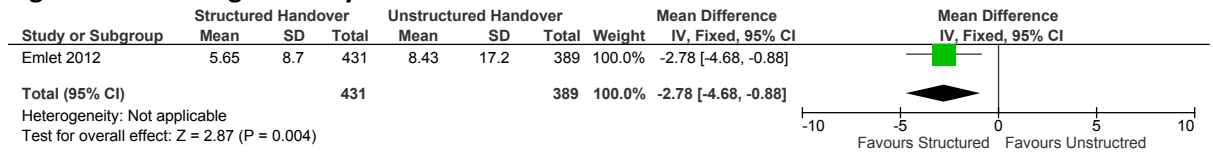


Figure 3: Readmission within 48 hours



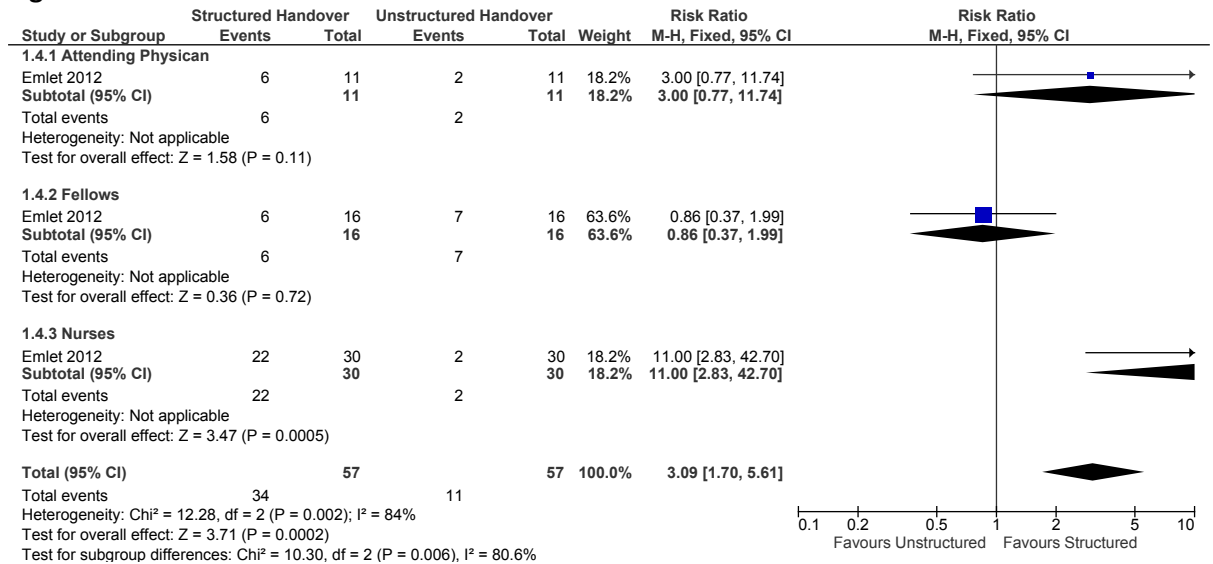
3

Figure 4: ICU length of stay



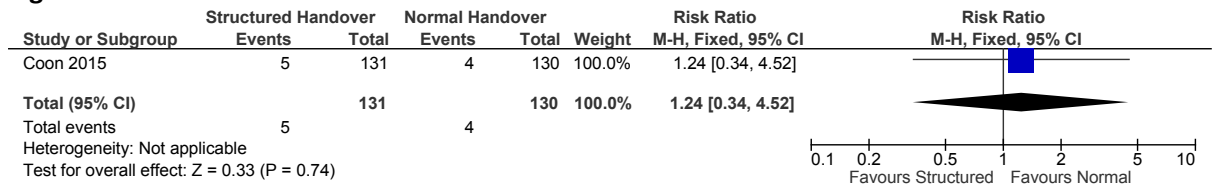
4

Figure 5: Staff satisfaction



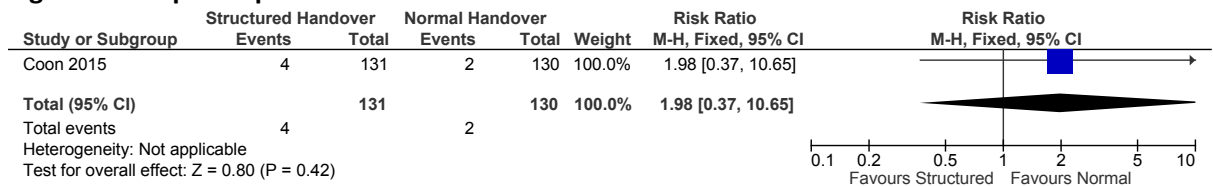
1 C.2 Neuroscience Unit

Figure 6: ICU Readmission



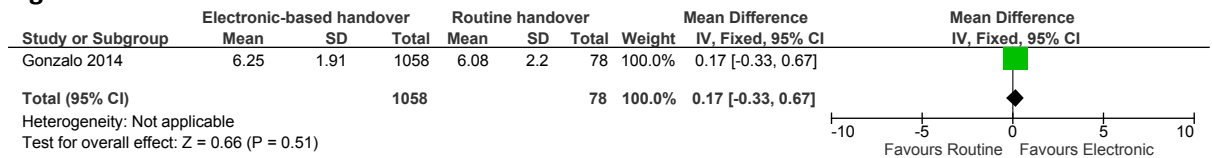
2

Figure 7: Rapid response team call



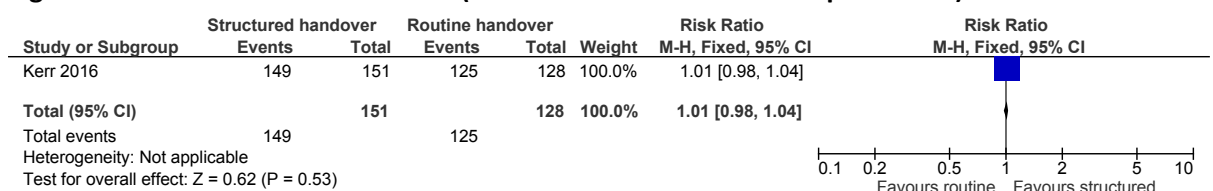
3 C.3 Emergency Department

Figure 8: Staff satisfaction



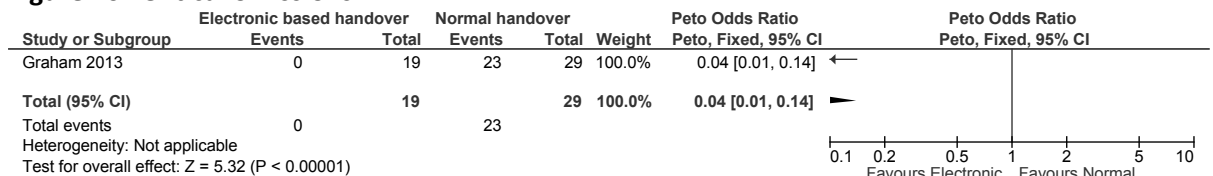
4

Figure 9: Avoidable adverse events (medications administered as prescribed)



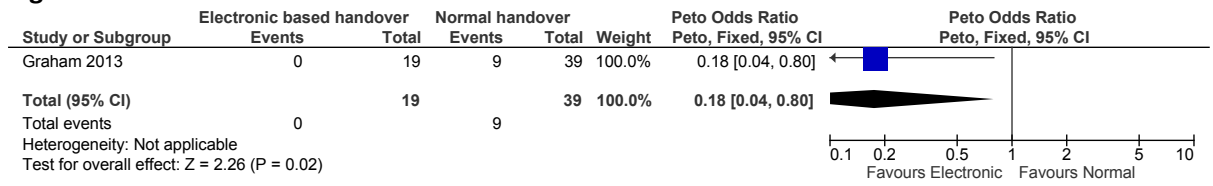
5 C.4 Internal Medicine

Figure 10: Critical omissions



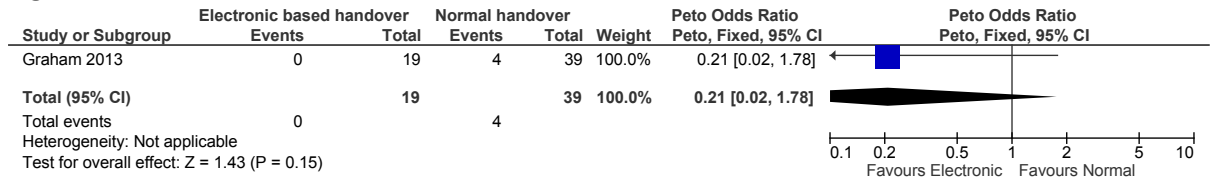
6

Figure 11: Near misses



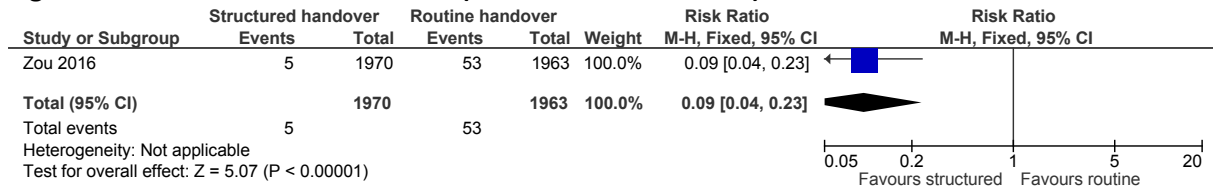
1

Figure 12: Adverse effects



2

Figure 13: Avoidable adverse events (handoffs related errors)



3

4

Appendix D: Clinical evidence tables

Study	Emlet 2012 ³⁴
Study type	Non-randomised comparative study
Number of studies (number of participants)	(n=820)
Countries and setting	Conducted in USA; Setting: Intensive care unit (mixed medical and surgical)
Line of therapy	Not applicable
Duration of study	Intervention time: 8 months
Method of assessment of guideline condition	Adequate method of assessment/diagnosis
Stratum	Overall
Subgroup analysis within study	Not applicable
Inclusion criteria	Not reported
Exclusion criteria	Not reported
Recruitment/selection of patients	Not reported
Age, gender and ethnicity	Age - Other: Not reported. Gender (M:F): Not reported. Ethnicity: Not reported
Further population details	1. Critical care patients: Critical care patients (mixed medical-surgical unit). 2. Frail elderly: Not applicable/Not stated/Unclear 3. Speciality/profession: Inter-professional handover (19 fellows in a Multidisciplinary Critical Care Training Programme; ICU nurses).
Indirectness of population	No indirectness
Interventions	(n=431) Intervention 1: Structured (planned framework as defined by the study) between healthcare professionals between shifts in acute settings - this will include (i) set times of the day, (ii) using a structured template/proforma for the handover (iii) recording the information in written or electronic form. The intervention schedule consisted of 12-hour shifts with 1 hour overlap between day and night shifts to allow for a 30 minute structured sign-out while walking through the ICU. The intervention schedule was designed with best evidence for circadian-based shift scheduling design; forward cycling shifts with short strings of nights. Sign-out curriculum and clinical cases were developed from Agency for Healthcare Research and Quality Patient Safety Web resources, Veterans Administration Patient Safety Web resources, and previously published papers. Prior to the beginning of intervention period, the 4 fellows were given a 2 hour interactive workshop on structured sign out and expectations, and also given special

Study	Emlet 2012 ³⁴
	<p>access to a feature called sign-out in the electronic medical record so that information could be saved securely and sign-out lists could be generated to assist in communication. Only fellows during the intervention periods had access to the sign-out feature in the electronic medical record. This 2 hour session reviewed content and structure of a problem-orientated sign-out with anticipatory guidance, expectations for sign-out while walking through the unit, and hands on instruction on how to create and print sign-out list. Weekly monitoring was performed by electronic survey of fellows during intervention blocks requesting feedback on quality and if sign-out was given as instructed: verbally, face-to-face while walking through ICU with printed, computer-generated sign-out lists. Directed feedback (positive or negative) was given bimonthly. Duration was 32 weeks (periods alternated between 4 and 8 week blocks of time). Concurrent medication/care: Shift scheduling. Comments: number of participants= number of admissions.</p> <p>(n=389) Intervention 2: Normal handover - Routine unstructured handover. The control schedule consisted of an overnight call every fourth night, where the total continuous hours worked during call was not >30 hours. No education on sign-out was provided during call periods, and no quality assurance of sign-out was monitored. Usual practice consisted of a brief verbal description of patients to the fellow on call with handwritten notes at the fellow's discretion. Duration was 32 weeks (periods alternated between 4 and 8 week blocks of time). Concurrent medication/care: none.</p>
Funding	Funding not stated

RESULTS (NUMBERS ANALYSED) AND RISK OF BIAS FOR COMPARISON: STRUCTURED HANDOVER versus ROUTINE UNSTRUCTURED HANDOVER

Protocol outcome 1: Mortality

- Actual outcome: Mortality at 8 months; Group 1: 26/431, Group 2: 33/389; Risk of bias: All domain - High, Selection - High, Blinding - High, Incomplete outcome data - Low, Outcome reporting - Low, Measurement - Low, Crossover - Low, Comments - Single centre study, small sample size, non-randomised design; Indirectness of outcome: Serious indirectness, Comments: Intervention also comprised shift scheduling

Protocol outcome 2: Avoidable adverse events (prescribing errors (errors of omission or commission) cardiopulmonary resuscitation, unplanned admission to intensive care, delayed or missed investigations, delayed or missed treatments)

- Actual outcome: Readmission <48 hours at 8 months; Group 1: 21/431, Group 2: 14/389; Risk of bias: All domain - High, Selection - High, Blinding - High, Incomplete outcome data - Low, Outcome reporting - Low, Measurement - Low, Crossover - Low, Comments - Single centre study, small sample size, non-randomised design; Indirectness of outcome: Serious indirectness, Comments: Intervention also comprised shift scheduling

Protocol outcome 3: Patient and/or carer satisfaction

- Protocol outcome 3: Patient and/or carer satisfaction

Study	Emlet 2012 ³⁴
	<p>- Actual outcome: Family satisfaction score at 8 months. Group 1: 24 (15, 41), Group 2: 22 (15, 39). Minimum and maximum scores are in brackets. At the time of study the Critical Care Family Needs Index was the only previously validated survey to measure family needs. The Critical Care Family Needs Index is scored such that a minimum value of 18 would denote that family needs were met, whereas a maximum value of 57 would denote that family needs were not met. Risk of bias: All domain - High, Selection - High, Blinding - High, Incomplete outcome data - Low, Outcome reporting - Low, Measurement - Low, Crossover - Low, Comments - Single centre study, small sample size, non-randomised design; Indirectness of outcome: Serious indirectness, Comments: Intervention also comprised shift scheduling</p> <p>Protocol outcome 4: Length of stay</p> <p>- Actual outcome: ICU length of stay at 8 months; Group 1: mean 5.65 days (SD 8.7); n=431, Group 2: mean 8.43 days (SD 17.2); n=389; Risk of bias: All domain - High, Selection - High, Blinding - High, Incomplete outcome data - Low, Outcome reporting - Low, Measurement - Low, Crossover - Low, Comments - Single centre study, small sample size, non-randomised design; Indirectness of outcome: Serious indirectness, Comments: Intervention also comprised shift scheduling</p> <p>Protocol outcome 5: Staff satisfaction</p> <p>- Actual outcome: Final vote- attending at 8 months; Group 1: 6/11, Group 2: 2/11; Risk of bias: All domain - High, Selection - High, Blinding - High, Incomplete outcome data - Low, Outcome reporting - Low, Measurement - Low, Crossover - Low, Comments - Single centre study, small sample size, non-randomised design; Indirectness of outcome: Serious indirectness, Comments: Intervention also comprised shift scheduling</p> <p>- Actual outcome: Final vote- fellows at 8 months; Group 1: 6/16, Group 2: 7/16; Risk of bias: All domain - High, Selection - High, Blinding - High, Incomplete outcome data - Low, Outcome reporting - Low, Measurement - Low, Crossover - Low, Comments - Single centre study, small sample size, non-randomised design; Indirectness of outcome: Serious indirectness, Comments: Intervention also comprised shift scheduling</p> <p>- Actual outcome: Final vote- nurses at 8 months; Group 1: 22/30, Group 2: 2/30; Risk of bias: All domain - High, Selection - High, Blinding - High, Incomplete outcome data - Low, Outcome reporting - Low, Measurement - Low, Crossover - Low, Comments - Single centre study, small sample size, non-randomised design; Indirectness of outcome: Serious indirectness, Comments: Intervention also comprised shift scheduling</p>
Protocol outcomes not reported by the study	Quality of life.

Study	Coon 2015 ²⁰
Study type	Before and after study.
Number of studies (number of participants)	(n=261)
Countries and setting	Conducted in USA; Setting: Neurosciences ICU.
Line of therapy	Not applicable.
Duration of study	Intervention + follow up: 6 months.
Method of assessment of guideline condition	Adequate method of assessment/diagnosis.
Stratum	Overall.

Study	Coon 2015 ²⁰
Subgroup analysis within study	Not applicable.
Inclusion criteria	Not reported.
Exclusion criteria	Not reported.
Recruitment/selection of patients	Consecutive patients.
Age, gender and ethnicity	Age - Mean (range): Pre-implementation: 65 (24-77), Post-implementation: 63 (23-84). Gender (M:F): Pre-implementation: 55F; Post-implementation: 70F. Ethnicity: not reported.
Further population details	1. Critical care patients: Critical care patients (Neurointensive ICU). 2. Frail elderly: Not applicable/Not stated/Unclear. 3. Speciality/profession: Profession-specific handover (Physicians).
Indirectness of population	No indirectness
Interventions	(n=131) Intervention 1: Structured (planned framework as defined by the study) between healthcare professionals between shifts in acute settings - this will include (i) set times of the day, (ii) using a structured template/proforma for the handover (iii) recording the information in written or electronic form. Creation of an ICU documentation checklist, including details on: medication reconciliation, urinary catheter, prophylaxis, vitals/cares, consults and follow-up. Duration: 3 months. Concurrent medication/care: none. (n=130) Intervention 2: Normal handover - Routine unstructured handover. Pre implementation handover. Duration: 3 months. Concurrent medication/care: none
Funding	No funding

RESULTS (NUMBERS ANALYSED) AND RISK OF BIAS FOR COMPARISON: THIS WILL INCLUDE (I) SET TIMES OF THE DAY, (II) USING A STRUCTURED TEMPLATE / PROFORMA FOR THE HANDOVER (III) RECORDING THE INFORMATION IN WRITTEN OR ELECTRONIC FORM versus ROUTINE UNSTRUCTURED HANDOVER

Protocol outcome 1: Avoidable adverse events (prescribing errors (errors of omission or commission) cardiopulmonary resuscitation, unplanned admission to intensive care, delayed or missed investigations, delayed or missed treatments) at Define

- Actual outcome: ICU readmissions at 6 months; Group 1: 5/131, Group 2: 4/130; Risk of bias: All domain - High, Selection - High, Blinding - High, Incomplete outcome data - Low, Outcome reporting - Low, Measurement - Low, Crossover - Low, Comments - before and after study; incomplete reporting of results; Indirectness of outcome: No indirectness

- Actual outcome: Rapid response team calls at 6 months; Group 1: 4/131, Group 2: 2/130; Risk of bias: All domain - High, Selection - High, Blinding - High, Incomplete outcome data - Low, Outcome reporting - Low, Measurement - Low, Crossover - Low, Comments - before and after study; incomplete reporting of results; Indirectness of outcome

Study	Coon 2015²⁰
Protocol outcomes not reported by the study	Mortality; Quality of life; Patient and/ or carer satisfaction; Length of stay; Staff satisfaction.
Study	Gonzalo 2014⁴²
Study type	Before and after study.
Number of studies (number of participants)	(n= not reported).
Countries and setting	Conducted in USA; Setting: Academic medical centre.
Line of therapy	Not applicable.
Duration of study	Intervention + follow up: 1 year.
Method of assessment of guideline condition	Method of assessment/diagnosis not stated.
Stratum	Overall.
Subgroup analysis within study	Not applicable.
Inclusion criteria	An electronic handoff tool (eSignout) was added to the pre-existing ED dashboard functionality that included (i) standardised fields for ED-based physician and nursing manual entry of sign out information, (ii) an automated page to the recipient ward-based physician send by the ED-based physician through the dashboard once the sign out information is ready for review and (iii) ability for the recipient ward-based physician to either electronically 'accept' the patient using the eSignout tool.
Exclusion criteria	N/A
Recruitment/selection of patients	Not reported.
Age, gender and ethnicity	Age: Not reported. Gender (M:F):42:38 (before implementation); 880:508 (following implementation). Ethnicity: Not reported.
Further population details	1. Critical care patients; 2. Frail elderly; 3. Speciality/profession.
Indirectness of population	No indirectness.
Interventions	(n=1388) Intervention 1: Electronic-based handover - using electronic means to conduct the structured handover. eSignout was added to the pre-existing ED dashboard functionality that included (i) standardised fields for ED-based physician and nursing manual entry of sign out information, (ii) an automated page to the recipient ward-based physician send by the ED-based physician through the dashboard once the sign out information is ready for review and (iii) ability for the recipient ward-based physician to either electronically 'accept' the patient using the eSignout tool (thereby commencing the patient transfer from ED to medicine ward) or, alternatively, to automatically page the sending ED-based physician for verbal communication if eSignout information was believed insufficient or requiring

Study	Gonzalo 2014 ⁴²
	<p>clarification. Following verbal communication, the ward-based physician would then electronically 'accept' the patient via eSignout, initiating the patient transfer. Duration: 1 year. Concurrent medication/care: Not reported. Comments: number of participants is number of surveys.</p> <p>(n=80) Intervention 2: Normal handover - routine unstructured handover. Verbal communication between sending ED-based physician and recipient ward-based physician mandatory prior to patient transfer. Duration: unclear. Concurrent medication/care: not reported. Comments: number of participants is number of surveys.</p>
Funding	Funding not stated.
<p>RESULTS (NUMBERS ANALYSED) AND RISK OF BIAS FOR COMPARISON: USING ELECTRONIC MEANS TO CONDUCT THE STRUCTURED HANDOVER versus ROUTINE UNSTRUCTURED HANDOVER.</p> <p>Protocol outcome 1: Staff satisfaction. - Actual outcome: The overall sign-out process at 1 year; Group 1: mean 6.25 (SD 1.91); n=1058, Group 2: Group 2: mean 6.08 (SD 2.20); n= 78 Risk of bias: All domain - High, Selection - High, Blinding - High, Incomplete outcome data - High, Outcome reporting - Low, Measurement - Low, Crossover - Low, Comments - Before and after study; differential missing data rate between groups.; Indirectness of outcome: No indirectness</p>	
Protocol outcomes not reported by the study	Mortality; Avoidable adverse events (prescribing errors [errors of omission or commission] cardiopulmonary resuscitation, unplanned admission to intensive care, delayed or missed investigations or delayed or missed treatments); Quality of life; Patient and/or carer satisfaction; Length of stay.

Study	Graham 2013 ⁴⁶
Study type	Before and after study.
Number of studies (number of participants)	(n=period 1: 39 night shifts, ~2700 handoffs. Period 4: 19 night shifts, ~1300 handoffs).
Countries and setting	Conducted in USA; Setting: urban teaching hospital.
Line of therapy	Not applicable.
Duration of study	Intervention time: 1 year.
Method of assessment of guideline condition	Method of assessment/diagnosis not stated.
Stratum	Overall.
Subgroup analysis within study	Not applicable.
Inclusion criteria	Define.

Study	Graham 2013 ⁴⁶
Exclusion criteria	Define.
Recruitment/selection of patients	Not reported.
Age, gender and ethnicity	Age - Mean (SD): Period 1: 26.9 (1.6); Period 4: 27.2 (1.1). Gender (M:F): Period 1:68%F; Period 3: 39%F. Ethnicity: not reported.
Further population details	1. Critical care patients; 2. Frail elderly; 3. Speciality/profession.
Extra comments	Period 1 was baseline (no interventions). Period 2 in the study was after the implementation of shift scheduling alone. Period 3 was after shift scheduling and the electronic template in place, but a few months before Period 4, which was with shift scheduling and the electronic template in place (1 year after baseline). The analysis is therefore between periods 1 and 4.
Indirectness of population	No indirectness.
Interventions	<p>(n=19) Intervention 1: Electronic-based handover - using electronic means to conduct the structured handover. An electronic template was created for the handoff that linked to the hospital's clinical information system and provided cues for appropriate content, including a summary assessment of the patient, past medical history, current medication list, active problems, current clinical status at the time of handoff, 'contingency planning' where the primary team provided anticipatory guidance for events that were likely to occur overnight, and a task list to be completed during the overnight shift. Duration: unclear. Concurrent medication/care: prior to the implementation of the electronic template, the shift model was altered to facilitate face to face verbal communication between the primary and night time coverage physicians. By asking the night float teams to arrive 1.5 hours earlier, and requiring the primary teams to remain in the hospital until their arrival, the intermediary handoff was removed. Comments: number of participants is number of shifts represented. The intervention is represented by the term 'period 4' in the study.</p> <p>(n=39) Intervention 2: Normal handover - routine unstructured handover. At baseline, day to night handoff was a 'double handoff' whereby the primary physicians handed off to an intermediary physician, so that they could leave the hospital earlier and preserve duty hour limits. A second handoff occurred between the intermediary and night-time coverage physician when the night shift began. The written handoff used a simple free text box linked to each of the patients in the hospital's clinical information system, with no structure for content. Duration: unclear. Concurrent medication/care: none. Comments: Number of participants is number of shifts represented. The routine unstructured handover is represented by the term 'period 1' in the study.</p>
Funding	Other (Health Resources and Services Administration training grant; Midcareer Investigator Award in Patient-Orientated Research from the National Institute on Aging (K24AG035075); Harvard Catalyst (NIH Award #UL1 RR

Study	Graham 2013⁴⁶
	025758) and financial contributions from Harvard University and its affiliated academic health care centres.).
RESULTS (NUMBERS ANALYSED) AND RISK OF BIAS FOR COMPARISON: USING ELECTRONIC MEANS TO CONDUCT THE STRUCTURED HANDOVER versus ROUTINE UNSTRUCTURED HANDOVER	
Protocol outcome 1: Avoidable adverse events (prescribing errors (errors of omission or commission) cardiopulmonary resuscitation, unplanned admission to intensive care, delayed or missed investigations, delayed or missed treatments) at Define. - Actual outcome: Critical data omissions at 1 year; Group 1: 0/19, Group 2: 23/39; Risk of bias: All domain - High, Selection - High, Blinding - High, Incomplete outcome data - Low, Crossover - Low, Comments - Before and after study; survey responses used for outcome reporting; intervention also included shift scheduling; Indirectness of outcome: No indirectness - Actual outcome: Near misses at 1 year; Group 1: 0/19, Group 2: 9/39; Risk of bias: All domain - High, Selection - High, Blinding - High, Incomplete outcome data - Low, Crossover - Low, Comments - Before and after study; survey responses used for outcome reporting; intervention also included shift scheduling; Indirectness of outcome: No indirectness - Actual outcome: Adverse events at 1 year; Group 1: 0/19, Group 2: 4/39; Risk of bias: All domain - High, Selection - High, Blinding - High, Incomplete outcome data - Low, Crossover - Low, Comments - Before and after study; survey responses used for outcome reporting; intervention also included shift scheduling; Indirectness of outcome: No indirectness	
Protocol outcomes not reported by the study	Mortality; Quality of life; Patient and/or carer satisfaction; Length of stay; Staff satisfaction.

Study	Kerr 2016⁵⁷
Study type	Before and after study.
Number of studies (number of participants)	1 (n=not reported).
Countries and setting	Conducted in Australia; Setting: Mixed adult and paediatric ED of a teaching hospital in Melbourne, Australia.
Line of therapy	Not applicable.
Duration of study	Other: 5 day pre-implementation phase and 5 day post-implementation phase
Method of assessment of guideline condition	Method of assessment/diagnosis not stated.
Stratum	Overall.
Subgroup analysis within study	Not applicable.
Inclusion criteria	Not reported.
Exclusion criteria	Not reported.
Recruitment/selection of patients	Review of ED patient records and direct observation.
Age, gender and ethnicity	Age - Other: Gender (M:F): Not reported. Ethnicity: Not reported.
Further population details	1. Critical care patients: Not applicable/Not stated/Unclear.

Study	Kerr 2016⁵⁷
	2. Frail elderly: Not applicable/Not stated/Unclear. 3. Speciality/profession: profession-specific handover (nurse handover).
Indirectness of population	Serious indirectness: Mixed adult and paediatric ED.
Interventions	(n=151) Intervention 1: Structured (planned framework as defined by the study) between healthcare professionals between shifts in acute settings - this will include (i) set times of the day, (ii) Using a structured template/proforma for the handover (iii) recording the information in written or electronic form. Structured nursing handover based on the ISBAR (identify, situation, background, assessment, recommendations) handover approach, modified to address deficits in nursing care practice in the ED. Key features: systematic, conducted at the bedside, involvement of patients/relatives, viewing of charts during handover, preliminary group handover for general information about unstable patients, notepads providing prompts about nursing care needs, treatment and disposition plan and important care elements (medication chart, vital signs, fluid balance). Duration: 5 days. Concurrent medication/care: not reported. (n=128) Intervention 2: Normal handover - Routine unstructured handover. Handover undertaken in an enclosed area located away from the clinical area, carried out by the nurse in charge of the outgoing shift to those on the incoming shift; generally occurring 3 times a day. Duration: 5 days. Concurrent medication/care: not reported.
Funding	Other (Nurses Board of Victoria Legacy Limited fund).
RESULTS (NUMBERS ANALYSED) AND RISK OF BIAS FOR COMPARISON: THIS WILL INCLUDE (I) SET TIMES OF THE DAY, (II) USING A STRUCTURED TEMPLATE / PROFORMA FOR THE HANDOVER (III) RECORDING THE INFORMATION IN WRITTEN OR ELECTRONIC FORM versus ROUTINE UNSTRUCTURED HANDOVER	
Protocol outcome 1: Avoidable adverse events (prescribing errors (errors of omission or commission) cardiopulmonary resuscitation, unplanned admission to intensive care, delayed or missed investigations, delayed or missed treatments) - Actual outcome: medications administered as prescribed at 5 days; Group 1: 149/151, Group 2: 125/128; Risk of bias: All domain - High, Selection - High, Blinding - High, Incomplete outcome data - Low, Outcome reporting - Low, Measurement - Low, Crossover - Low, Subgroups - Low; Indirectness of outcome: No indirectness	
Protocol outcomes not reported by the study	Mortality; Quality of life; Patient/carer satisfaction; Length of stay; Staff satisfaction.

Study	Zou 2016¹²⁶
Study type	Before and after study.
Number of studies (number of participants)	1 (n=3933)
Countries and setting	Conducted in China; Setting: Medical unit of a tertiary general hospital in China.
Line of therapy	Not applicable.

Study	Zou 2016 ¹²⁶
Duration of study	Other: 1 year pre-intervention and 1 year post-intervention.
Method of assessment of guideline condition	Unclear method of assessment/diagnosis: not reported.
Stratum	Overall: N/A.
Subgroup analysis within study	Not applicable.
Inclusion criteria	Not reported.
Exclusion criteria	Not reported
Recruitment/selection of patients	Unclear.
Age, gender and ethnicity	Age - --: Not reported. Gender (M:F): Not reported. Ethnicity: Not reported.
Further population details	1. Critical care patients: Not applicable/Not stated/Unclear. 2. Frail elderly: Not applicable/Not stated/Unclear. 3. Speciality/profession: profession-specific handover.
Extra comments	Admissions included patients with gastroenterological and endocrinological diseases such as pancreatitis, gastrointestinal bleeding, cirrhosis, liver cancer and diabetes.
Indirectness of population	No indirectness: no indirectness.
Interventions	(n=1970) Intervention 1: Structured (planned framework as defined by the study) between healthcare professionals between shifts in acute settings - this will include (i) set times of the day, (ii) using a structured template/proforma for the handover (iii) recording the information in written or electronic form. Standard nursing handover form including patient name, medical record number, diagnosis, signs/symptoms, abnormal test results, care plan 'to do' tasks, scheduled tests/procedures, fall risk, oxygen therapy and catheter. Oral report given by outgoing nurses at nursing station, then bedside handoffs. Head nurse supervised each handoff process. Duration October 2012 - September 2013. Concurrent medication/care: Not reported. (n=1963) Intervention 2: Normal handover - Routine unstructured handover. Verbal nursing handoffs at the nursing station at shift change time; occasionally bedside handoffs for critical patients; information transferred was incomplete and unsystematic. Duration October 2013 - September 2014. Concurrent medication/care: Not reported.
Funding	Funding not stated.
RESULTS (NUMBERS ANALYSED) AND RISK OF BIAS FOR COMPARISON: THIS WILL INCLUDE (I) SET TIMES OF THE DAY, (II) USING A STRUCTURED TEMPLATE / PROFORMA FOR THE HANDOVER (III) RECORDING THE INFORMATION IN WRITTEN OR ELECTRONIC FORM versus ROUTINE UNSTRUCTURED HANDOVER	
Protocol outcome 1: Avoidable adverse events (prescribing errors (errors of omission or commission) cardiopulmonary resuscitation, unplanned admission to intensive	

Study	Zou 2016 ¹²⁶
	care, delayed or missed investigations, delayed or missed treatments). - Actual outcome: Handoffs related errors at 1 year; Group 1: 5/1970, Group 2: 53/1963; Risk of bias: All domain - High, Selection - High, Blinding - High, Incomplete outcome data - Low, Outcome reporting - Low, Measurement - Low, Crossover - Low, Subgroups - Low; Indirectness of outcome: No indirectness
Protocol outcomes not reported by the study	Mortality; Quality of life; Patient/carer satisfaction; Length of stay; Staff satisfaction.

Appendix E: Economic evidence tables

Study	Yao 2012 ¹²⁵			
Study details	Population & interventions	Costs	Health outcomes	Cost effectiveness
<p>Economic analysis: CUA (health outcome: QALY)</p> <p>Study design: Retrospective cohort analysis without multivariate regression</p> <p>Approach to analysis: Analysis on effect of structured patient handover on preventable adverse events. QoL was assigned by grouping adverse events by severity</p> <p>Perspective: Netherlands health system</p> <p>Time horizon: 1 year</p> <p>Treatment effect duration^(a): 1 year</p> <p>Discounting: Costs: n/a ; Outcomes: n/a</p>	<p>Population: Patients discharged from hospital to the community</p> <p>Cohort settings: Start age: n/a Male: n/a</p> <p>Intervention 1: Usual care</p> <p>Intervention 2: Structured patient handover between hospital and community (HANDOVER project)</p>	<p>Total costs (per patient discharge): Intervention 1: Intervention 2: Incremental (2–1): £1.86 (95% CI: NR; p=NR)</p> <p>Currency & cost year: 2011 Euros (presented here as 2011 UK pounds^(b))</p> <p>Cost components incorporated: Intervention cost (HANDOVER), admission and readmission associated with adverse event to ED, GP visit</p>	<p>QALYs (per patient discharge): Intervention 1: Intervention 2: Incremental (2–1): 0.0103 (95% CI: NR; p=NR)</p>	<p>ICER (Intervention 2 versus Intervention 1): £180.34 per QALY gained</p> <p>Analysis of uncertainty: The study looked at a base case of 21% effectiveness of the intervention whereby it is 21% effective at reducing preventable adverse events. The intervention was found to be dominant at 100% effectiveness, increase in QALYs and cost saving. The study also found that this dominance is lost when effectiveness drops below 24.3% and is no longer cost-effective, at a €20,000 threshold, if the effectiveness of the intervention drops below 1.6%.</p>
Data sources				
<p>Health outcomes: EQ-5D scores were estimated by categorising adverse events into groups and assigning the groups to an indicative state. Quality-of-life weights: EQ-5D UK tariff Cost sources: Published sources (to be added to references).</p>				
Comments				
<p>Source of funding: Framework Programme of the European Commission; National Institute of Health Research (NIHR); ESF SRC MATCH project; NIHR Collaborations for Leadership in Applied Health Research and Care (CLAHRC) for Birmingham and Black Country Applicability and limitations: Some uncertainty regarding the applicability</p>				

of resource use and costs from the Netherlands (2011) to current NHS context. Costs from multiple published studies. No discounting reported. Quality-of-life estimated by categorising adverse events and allocating to an indicative state from the EQ-5D. Health outcomes based on estimates and assumptions of preventable adverse events. Effectiveness of the intervention elicited from experts. **Other:** Converting the threshold from Euros to UK pounds would show greater favour for the intervention with the current €20,000 threshold used in the analysis converting to £16,853, less than the £20,000 threshold used.

Overall applicability^(c): Partially applicable **Overall quality^(d):** Potentially serious limitations

Abbreviations: CUA: cost-utility analysis; 95% CI: 95% confidence interval; EQ-5D: Euroqol 5 dimensions (scale: 0.0 [death] to 1.0 [full health], negative values mean worse than death); ICER: incremental cost-effectiveness ratio; NR: not reported; QALYs: quality-adjusted life years; QoL: Quality-of-life.

- (a) For studies where the time horizon is longer than the treatment duration, an assumption needs to be made about the continuation of the study effect. For example, does a difference in utility between groups during treatment continue beyond the end of treatment and if so for how long?*
- (b) Converted using 2011 purchasing power parities⁸⁰.*
- (c) Directly applicable/Partially applicable/Not applicable.*
- (d) Minor limitations/Potentially serious limitations/Very serious limitations.*

Appendix F: GRADE tables

Table 9: Clinical evidence profile: Intensive care unit

Quality assessment							No of patients		Effect		Quality	Importance
No of studies	Design	Risk of bias	Inconsistency	Indirectness	Imprecision	Other considerations	Structured	Unstructured	Relative (95% CI)	Absolute		
Mortality												
1	observational studies	serious ¹	no serious inconsistency	no serious indirectness	very serious ²	none	26/389 (6.7%)	8.5%	RR 0.71 (0.43 to 1.17)	26 fewer per 1000 (from 48 fewer to 14 more)	⊕○○○ VERY LOW	CRITICAL
Re-admission <48hours												
1	observational studies	serious ¹	no serious inconsistency	no serious indirectness	very serious ²	none	21/431 (4.9%)	3.6%	RR 1.35 (0.7 to 2.63)	13 more per 1000 (from 11 fewer to 59 more)	⊕○○○ VERY LOW	CRITICAL
Length of Stay (Better indicated by lower values)												
1	observational studies	serious ¹	no serious inconsistency	no serious indirectness	no serious imprecision	none	431	389	-	MD 2.78 lower (4.68 to 0.88 lower)	⊕○○○ VERY LOW	IMPORTANT
Staff satisfaction												
1	observational studies	serious ¹	no serious inconsistency	no serious indirectness	no serious imprecision	none	34/57 (59.6%)	18.2%	RR 3.09 (1.7 to 5.61)	380 more per 1000 (from 127 more to 839 more)	⊕○○○ VERY LOW	IMPORTANT
Staff satisfaction - Attending Physician												
1	observational studies	serious ¹	no serious inconsistency	no serious indirectness	serious ²	none	6/11 (54.5%)	18.2%	RR 3 (0.77 to 11.74)	364 more per 1000 (from 42 fewer to 1000 more)	⊕○○○ VERY LOW	IMPORTANT

Staff satisfaction – Fellows												
1	observational studies	serious ¹	no serious inconsistency	no serious indirectness	very serious ²	none	6/16 (37.5%)	43.8%	RR 0.86 (0.37 to 1.99)	61 fewer per 1000 (from 276 fewer to 434 more)	⊕000 VERY LOW	IMPORTANT
Staff satisfaction – Nurses												
1	observational studies	serious ¹	no serious inconsistency	no serious indirectness	no serious imprecision	none	22/30 (73.3%)	6.7%	RR 11 (2.83 to 42.7)	670 more per 1000 (from 123 more to 1000 more)	⊕000 VERY LOW	IMPORTANT

¹ All non-randomised studies automatically downgraded due to selection bias. Studies may be further downgraded by 1 increment if other factors suggest additional high risk of bias, or 2 increments if other factors suggest additional very high risk of bias

² Downgraded by 1 increment if the confidence interval crossed 1 MID or by 2 increments if the confidence interval crossed both MIDs

Table 10: Clinical evidence profile: Neurology Unit

Quality assessment							No of patients		Effect		Quality	Importance
No of studies	Design	Risk of bias	Inconsistency	Indirectness	Imprecision	Other considerations	Structured	Unstructured	Relative (95% CI)	Absolute		
ICU Readmission												
1	observational studies	serious ¹	no serious inconsistency	no serious indirectness	very serious ²	none	5/131 (3.8%)	3.1%	RR 1.24 (0.34 to 4.52)	7 more per 1000 (from 20 fewer to 109 more)	⊕000 VERY LOW	CRITICAL
Rapid Response Team Call at 6 Months												
1	observational studies	serious ¹	no serious inconsistency	no serious indirectness	very serious ²	none	4/131 (3.1%)	1.5%	RR 1.98 (0.37 to 10.65)	15 more per 1000 (from 9 fewer to 145 more)	⊕000 VERY LOW	CRITICAL

¹ All non-randomised studies automatically downgraded due to selection bias. Studies may be further downgraded by 1 increment if other factors suggest additional high risk of bias, or 2 increments if other factors suggest additional very high risk of bias

² Downgraded by 1 increment if the confidence interval crossed 1 MID or by 2 increments if the confidence interval crossed both MIDs

Table 11: Clinical evidence profile: Emergency Department

Quality assessment							No of patients		Effect		Quality	Importance
No of studies	Design	Risk of bias	Inconsistency	Indirectness	Imprecision	Other considerations	Electronic	Routine	Relative (95% CI)	Absolute		
Staff satisfaction (Better indicated by higher values)												
1	observational studies	serious ¹	no serious inconsistency	no serious indirectness	no serious imprecision	none	1058	78	-	MD 0.17 higher (0.33 lower to 0.67 higher)	⊕○○○ VERY LOW	IMPORTANT
Avoidable adverse events (medications administered as prescribed)												
1	observational studies	serious ¹	no serious inconsistency	no serious indirectness	no serious imprecision	none	149/151 (98.7%)	97.7%	RR1.01 (0.98 to 1.04)	10 more per 1000 (from 20 fewer to 39 more)	⊕○○○ VERY LOW	CRITICAL

¹ All non-randomised studies automatically downgraded due to selection bias. Studies may be further downgraded by 1 increment if other factors suggest additional high risk of bias, or 2 increments if other factors suggest additional very high risk of bias

Table 12: Clinical evidence profile: Internal Medicine

Quality assessment							No of patients		Effect		Quality	Importance
No of studies	Design	Risk of bias	Inconsistency	Indirectness	Imprecision	Other considerations	Electronic	Routine	Relative (95% CI)	Absolute		
Critical data omissions												
1	observational studies	serious ¹	no serious inconsistency	no serious indirectness	no serious imprecision	none	0/19 (0%)	79.3%	Peto OR 0.04 (0.01 to 0.14)	660 fewer per 1000 (from 444 fewer to 756 more)	⊕○○○ VERY LOW	CRITICAL

										fewer)	LOW	
Near Misses												
1	observational studies	serious ¹	no serious inconsistency	no serious indirectness	no serious imprecision	none	0/19 (0%)	23.1%	Peto OR 0.18 (0.04 to 0.8)	180 fewer per 1000 (from 37 fewer to 219 fewer)	⊕○○○ VERY LOW	CRITICAL
Adverse events												
1	observational studies	serious ¹	no serious inconsistency	no serious indirectness	very serious ²	none	0/19 (0%)	10.3%	Peto OR 0.21 (0.02 to 1.78)	79 fewer per 1000 (from 101 fewer to 67 more)	⊕○○○ VERY LOW	CRITICAL
Avoidable adverse events (handoffs related errors)												
1	observational studies	serious ¹	no serious inconsistency	no serious indirectness	no serious imprecision	none	5/1970 (0.25%)	2.70%	RR 0.09 (0.04 to 0.23)	25 fewer per 1000 (from 21 fewer to 26 fewer)	⊕○○○ VERY LOW	CRITICAL

¹ All non-randomised studies automatically downgraded due to selection bias. Studies may be further downgraded by 1 increment if other factors suggest additional high risk of bias, or 2 increments if other factors suggest additional very high risk of bias

² Downgraded by 1 increment if the confidence interval crossed 1 MID or by 2 increments if the confidence interval crossed both MIDs

1
2

3

4

5

6

7

1 Appendix G: Excluded clinical studies

2 **Table 13: Studies excluded from the clinical review**

Reference	Reason for exclusion
Abraham 2012 ²	Incorrect comparison (paper based versus paper based handover tools)
Abraham 2014 ⁴	No useable outcomes
Abraham 2014 ³	Systematic review (incorrect PICO)
Ah-kye 2015 ⁵	Incorrect population (trauma patients)
Ahmed 2012 ⁶	Incorrect population and study design (before and after study; acute surgical admissions)
Anderson 2015 ⁷	Systematic review (incorrect PICO)
Anon 2015 ⁴⁸	Systematic review (incorrect PICO)
AORN2016 ¹	Evidence appraisal of a RCT Salzwedel 2013- the study has been excluded due to incorrect population (post-anaesthesia patients)
Arora 2009 ⁸	Systematic review (incorrect PICO)
Barnes 2011 ⁹	No relevant outcomes
Berkenstadt 2008 ¹⁰	No relevant outcomes
Blaz 2012 ¹¹	Systematic review (no references included)
Bost 2010 ¹²	Incorrect study design (qualitative)
Brown 2015 ¹³	No relevant outcomes
Bump 2012 ¹⁴	Incorrect comparison (does not compare handover types (standard sign out versus additional training.)
Christie 2009 ¹⁶	Narrative review
Chu 2009 ¹⁷	Incorrect study design (survey)
Cohen 2010 ¹⁸	Systematic review (no relevant outcomes)
Collins 2011 ¹⁹	Systematic review (incorrect PICO)
Cornell 2014 ²¹	No relevant outcomes
Craig 2012 ²²	No relevant outcomes
Curtis 2013 ²³	No relevant outcomes
Dawson 2013 ²⁴	Systematic review (incorrect PICO)
Dhillon 2011 ²⁵	Incorrect population (surgical patients)
Dixon 2015A ²⁶	Incorrect population (surgical patients)
Donnelly 2012 ²⁸	Incorrect population (not AME); no relevant outcomes
Donnelly 2014 ²⁷	Incorrect population (not AME)
Dowding 2001 ²⁹	No useable outcomes
Downey 2013 ³⁰	Incorrect population (trauma patients)
DRACHZAHAVY2015 ³¹	No useable outcomes
DuBosh 2014 ³²	No useable outcomes
Dufault 2010 ³³	Systematic review (incorrect PICO)
Evans 2014 ³⁵	Incorrect study design (narrative review)

Reference	Reason for exclusion
Field 2011 ³⁶	Incorrect setting (nursing homes)
Flanagan 2009 ³⁷	Incorrect study design (survey)
Flemming 2013 ³⁸	Systematic review (incorrect PICO)
Foster 2012 ³⁹	Systematic review (incorrect PICO)
Gakhar 2010 ⁴⁰	No relevant outcomes
Gardiner 2015 ⁴¹	Systematic review (incorrect PICO)
Govier2012A ⁴³	Incorrect study design (audit)
GRAAN2016 ⁴⁴	No useable outcomes.
Halm 2013 ⁴⁷	Systematic review (incorrect PICO)
Hesselink 2012 ⁴⁹	Incorrect population (patient discharge from hospital to primary care)
Hill 2015 ⁵⁰	Incorrect intervention (inter-hospital transfer)
Iedema 2012 ⁵¹	Incorrect study design (survey)
Jensen 2013 ⁵²	Systematic review (incorrect PICO)
Johnson 2016 ⁵³	Comparator not defined
Kaufmnan 2013 ⁵⁴	Incorrect population (mainly children and neonates)
Keebler 2016 ⁵⁵	Systematic review (references screened)
Keenan 2006 ⁵⁶	Description of handover tool only.
Kessler 2013 ⁵⁸	Incorrect study design (narrative review)
Kitson 2014 ⁵⁹	Incorrect study design (narrative review)
Kochendorfer 2010 ⁶⁰	Incorrect intervention (electronic rounding report)
KUHN2016 ⁶¹	Surgical patients – patients admitted to neurosurgical service
Lamond 2000 ⁶²	Looking at the information content of handover, not comparing types of handover.
Lee 1996 ⁶³	Pre-1995 study
Li 2013 ⁶⁴	Systematic review (incorrect PICO)
Malekzadeh 2013 ⁶⁵	No useable outcomes
Manser 2011 ⁶⁷	Incorrect study design (narrative review)
Manser 2013 ⁶⁶	Incorrect study design (narrative review)
Mardis 2016 ⁶⁸	Systematic review (references screened)
Matic 2011 ⁷⁰	Incorrect study design (narrative review)
Moller 2013 ⁷²	Incorrect population (surgical patients)
Moseley 2012 ⁷³	Incorrect population (neurology inpatients)
MCQUILLAN2014 ⁷¹	Incorrect population- Paediatric patients
Mueller 2016 ⁷⁴	Incorrect population (paediatric patients)
Nakagawa 2016 ⁷⁵	Study abstract
Nakhleh 2006 ⁷⁶	Incorrect population (surgical patients)

Reference	Reason for exclusion
O'Byrne 2008 ⁷⁸	Incorrect study design (narrative review)
Ong 2011 ⁷⁹	Systematic review (incorrect PICO)
Palmer 2014 ⁸¹	Incorrect intervention (checklist to encourage the completion of outstanding tasks before shift change on Friday evening)
Patel 2014 ⁸²	Comparator not defined
Patterson 2010 ⁸⁴	Incorrect study design (narrative review)
Patterson 2012 ⁸³	Incorrect study design (narrative review)
Payne 2012 ⁸⁵	Incorrect study design (before and after study); no useable outcomes
Petrovic 2012 ⁸⁶	Comparator not defined
Phillips 2009 ⁸⁷	Incorrect study design (observations and interviews). No comparison group stated.
Pincavage 2013 ⁸⁸	Incorrect population (primary care setting)
Poore 2012 ⁸⁹	Incorrect population (surgical patients)
Pothier 2005 ⁹⁰	No relevant outcomes
Pucher 2015 ⁹¹	Incorrect population (surgical patients)
Raduma-Tomas 2011 ⁹²	Systematic review (incorrect PICO)
RAITEN2015 ⁹³	Review -scanned for relevant references
Raptis 2009 ⁹⁴	No useable outcomes
Reid 2005 ⁹⁵	Incorrect study design (audit)
Riesenberg 2009 ⁹⁸	Systematic review (incorrect PICO)
Riesenberg 2009 ⁹⁷	Systematic review (incorrect PICO)
Riesenberg 2010 ⁹⁶	Systematic review (incorrect PICO)
Robertson 2014 ⁹⁹	Systematic review (incorrect PICO)
Ryan 2011 ¹⁰²	No extractable outcomes (length of stay reported as median and interquartile range)
Salzwedel 2013 ¹⁰³	Incorrect population (post-anaesthesia patients)
Starmer 2014 ¹⁰⁹	Incorrect population (paediatrics)
Segall 2012 ¹⁰⁵	Incorrect population (surgical patients)
SEGALL2016 ¹⁰⁴	Inappropriate study design- surveys, interviews and focus groups
Siefferman 2012 ¹⁰⁶	Incorrect population (rehab patients)
Singer 2006 ¹⁰⁷	Incorrect study design (narrative review)
Staggers 2013 ¹⁰⁸	Systematic review (incorrect PICO)
Stephens 2015 ¹¹⁰	Incorrect population (surgical patients)
Talbot 2007 ¹¹¹	No useable outcomes
Thompson 2011 ¹¹²	No useable outcomes
Timko 2015 ¹¹⁴	Incorrect population (substance misuse)
Till 2014 ¹¹³	No relevant outcomes

Reference	Reason for exclusion
USHER2016 ¹¹⁶	Inappropriate intervention- transfer between hospitals (inter-hospital hand-offs)
Van Eaton 2005 ¹¹⁷	No relevant outcomes
Van Eaton 2010 ¹¹⁸	Incorrect population (more than 50% surgical patients, trauma and paediatrics)
Van Sluisveld 2015 ¹¹⁹	Systematic review (incorrect PICO)
Vines 2014 ¹²⁰	Systematic review (incorrect PICO)
Walton 2015 ¹²¹	No relevant outcomes
Williamson 2015 ¹²²	Incorrect population (surgical patients); comparator not defined
Wood 2015 ¹²³	Systematic review (incorrect PICO)

1
2

1
2
3
4

Appendix H: Excluded economic studies

No economic studies were excluded.