

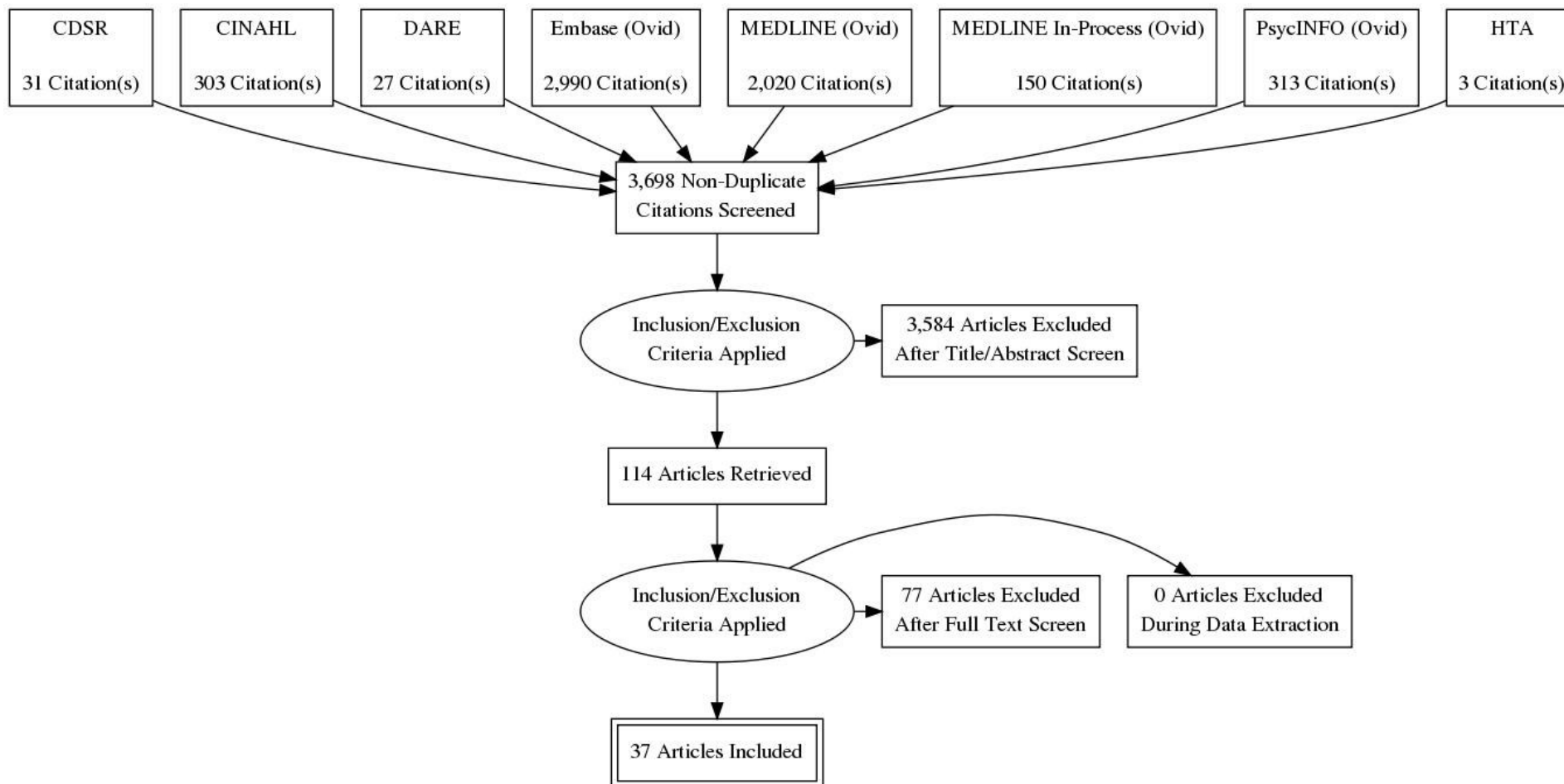
1 Appendix K: Evidence review flow charts

K.1.2 Dementia diagnosis

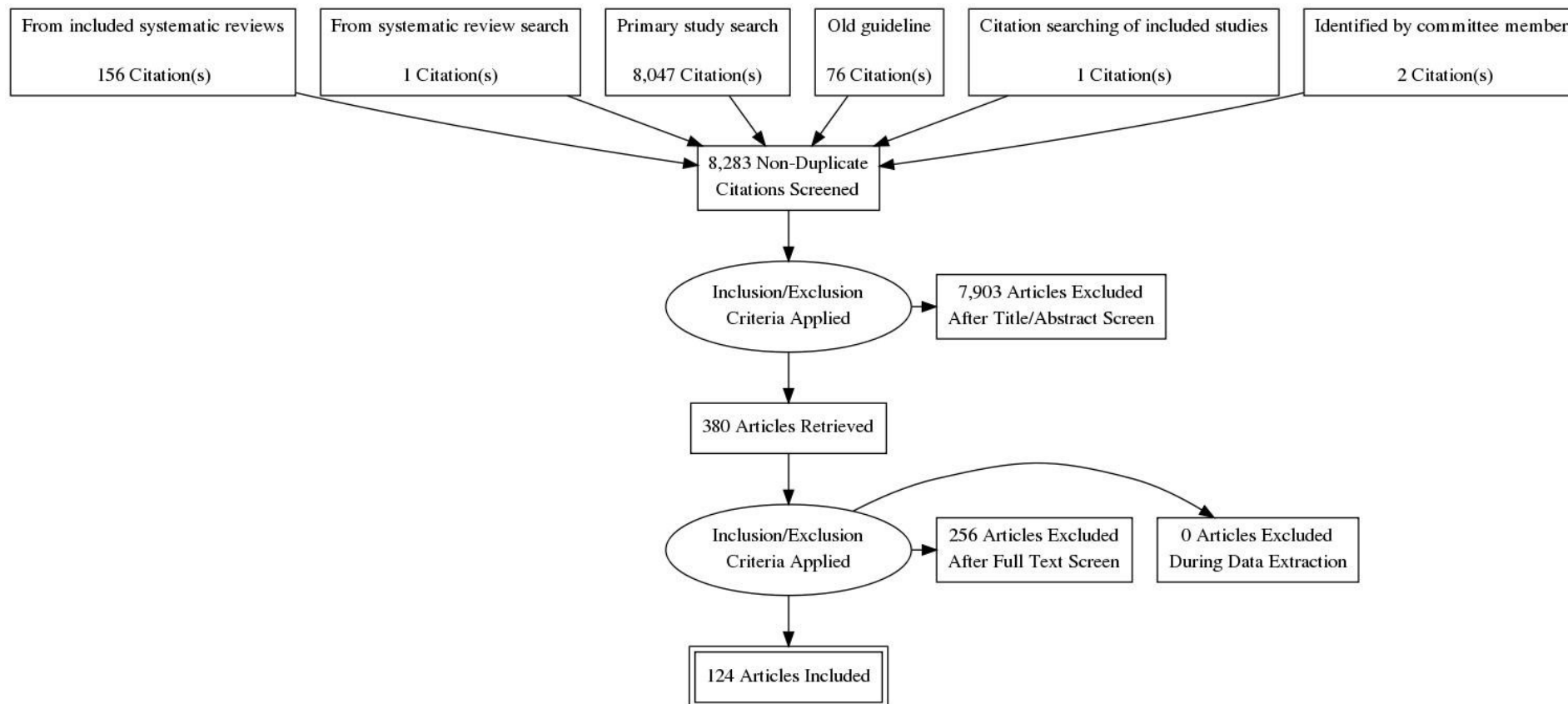
K.1.13 Dementia diagnosis

- 4 • What are the most effective methods of primary assessment to decide whether a person with suspected dementia should be referred to a
- 5 dementia service?
- 6 • What are the most effective methods of diagnosing dementia and dementia subtypes in specialist dementia diagnostic services?

K.1.1.11 Systematic reviews

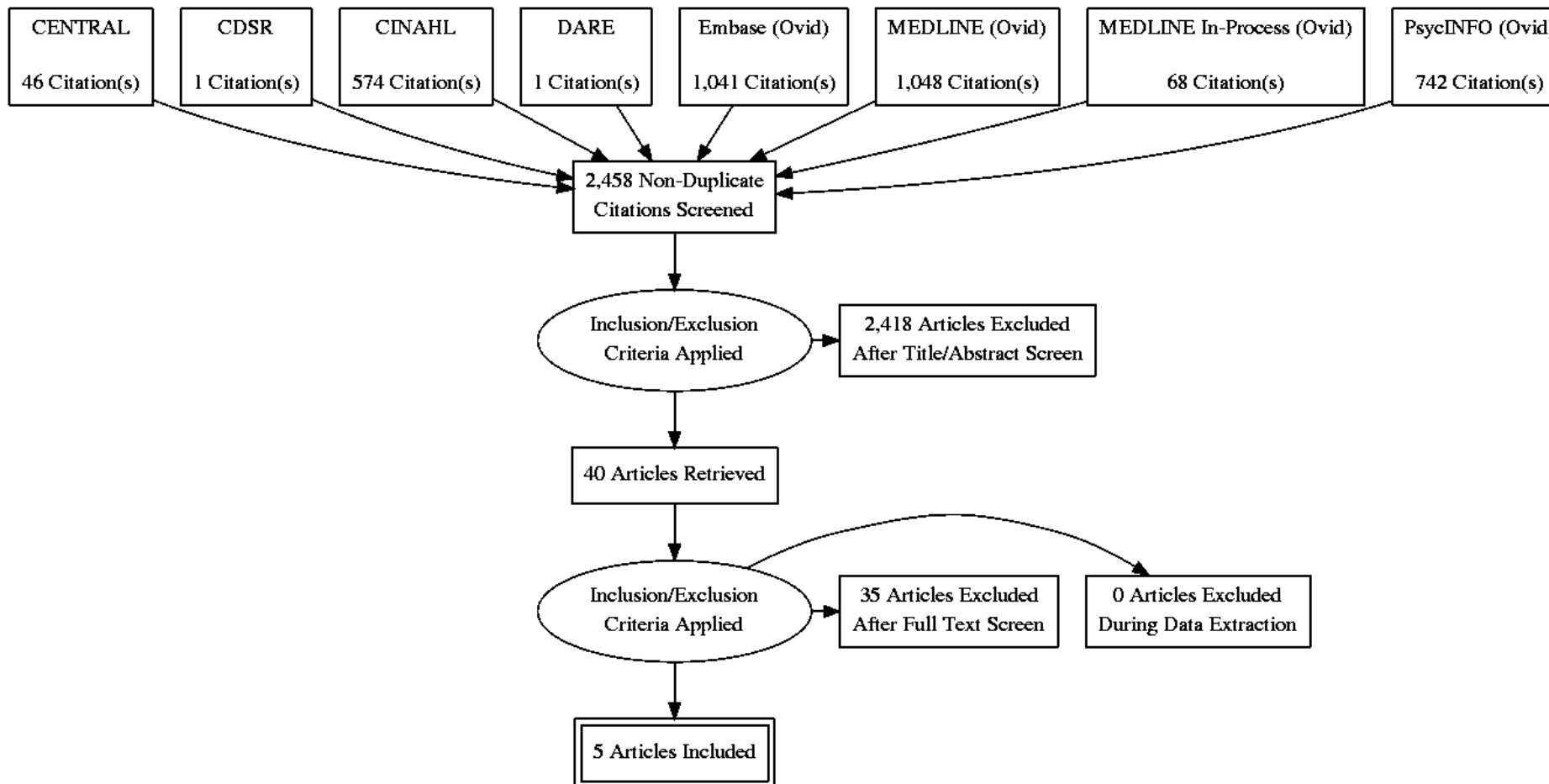


K.1.1.21 Primary studies



K.1.2.1 Distinguishing dementia from delirium or delirium with dementia

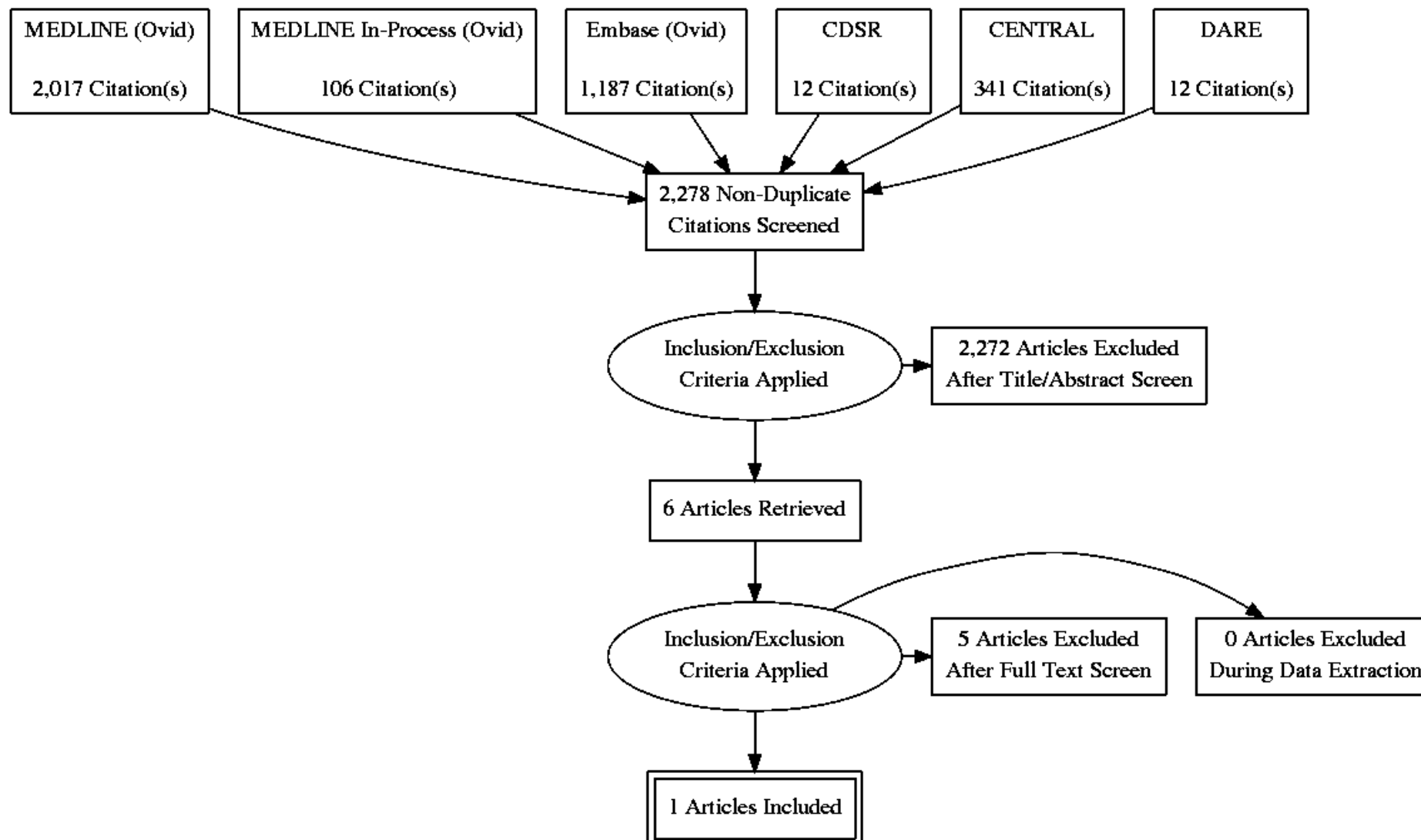
- 2 • What are the most effective methods of differentiating dementia or dementia with delirium from delirium alone?



3
4

K.1.31 Case finding for people at high risk of dementia

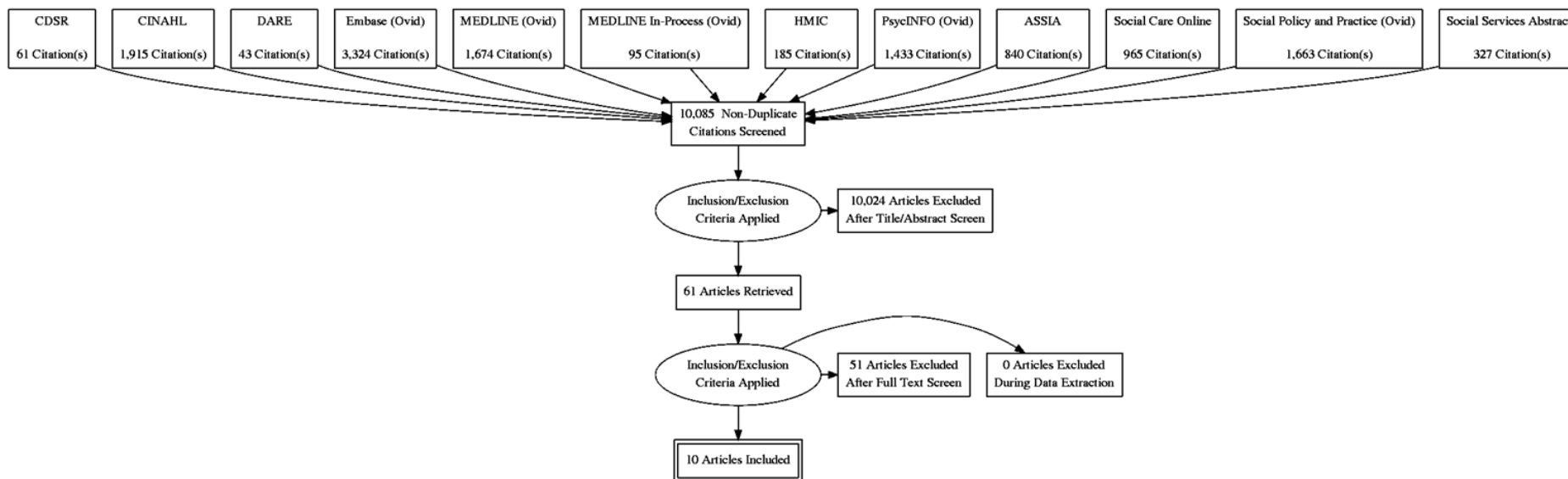
- 2 • What are the most effective methods of case finding for people at high risk of dementia?



K.2.1 Involving people with dementia in decision about care

K.2.1.2 Barriers and facilitators to involvement in decision making for people living with dementia

- 3 • What barriers and facilitators have an impact on involving people living with dementia in decisions about their present and future care?
- 4 • What barriers and facilitators have an impact on how people living with dementia can make use of advance planning?
- 5



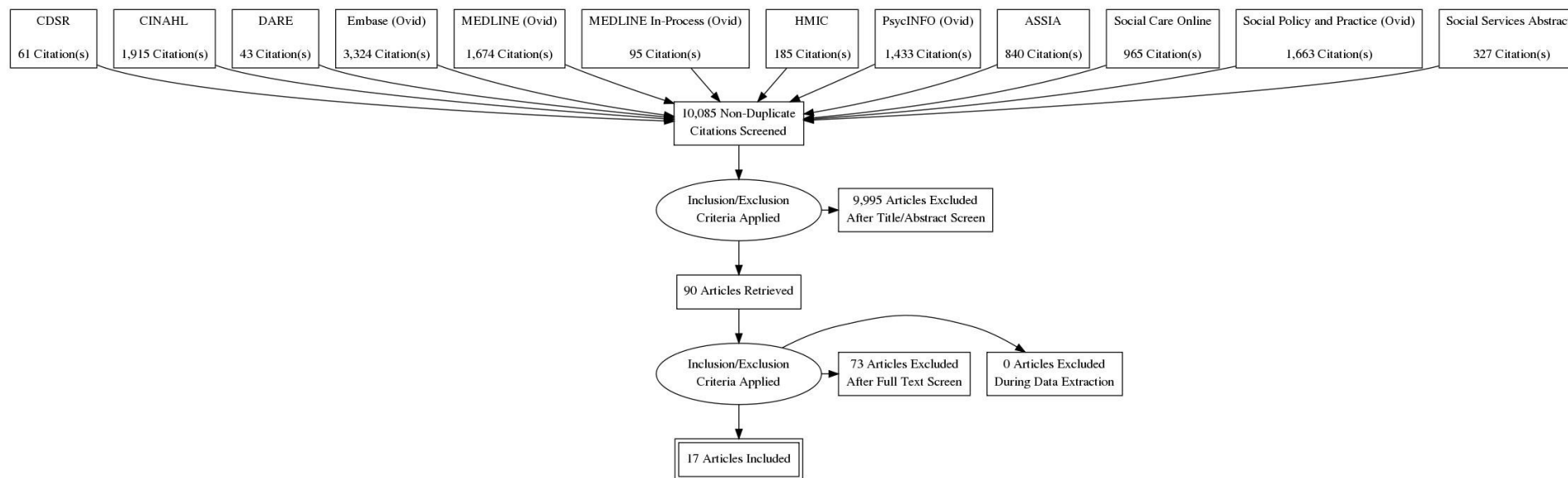
6
7

K.3.1 Care planning, review and co-ordination

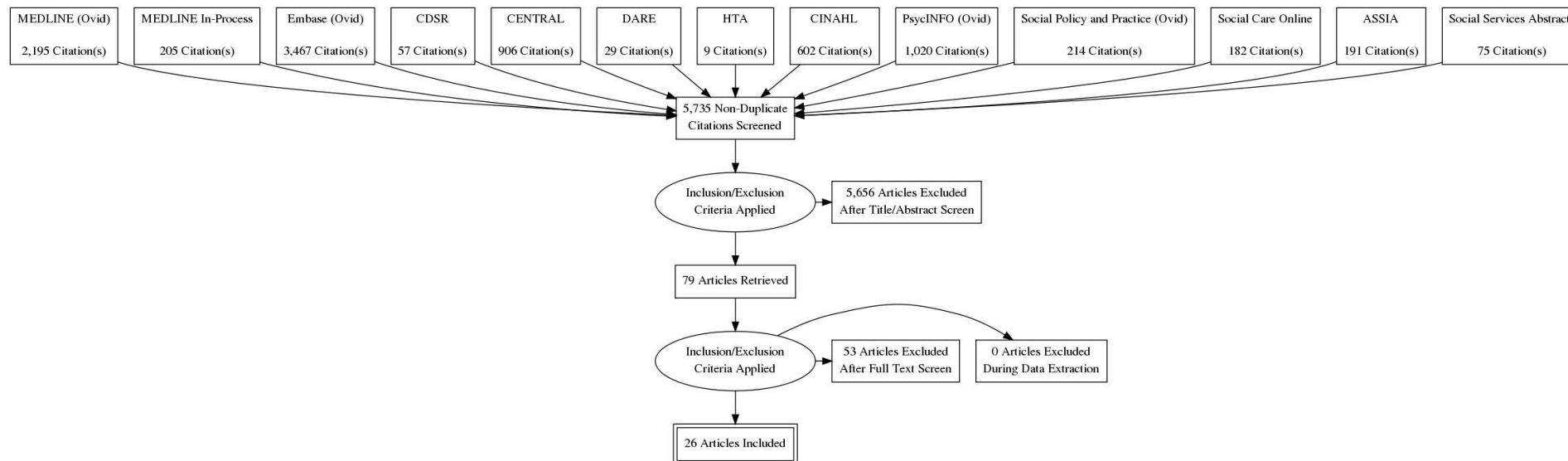
K.3.1.2 Health and social care co-ordination

- 3 • What are the most effective methods of care planning, focussing upon improving outcomes for people with dementia and their carers?
- 4 • How should health and social care be co-ordinated for people living with dementia?

K.3.1.15 Qualitative evidence



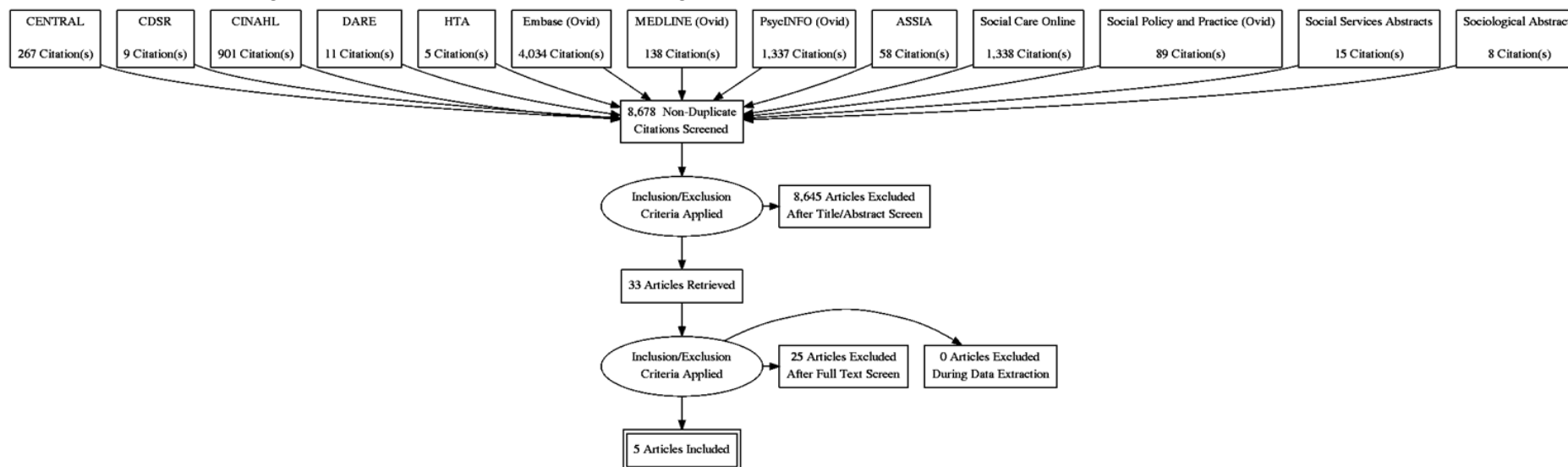
K.3.1.21 Quantitative evidence



2

K.3.21 Post diagnosis review for people living with dementia

- 2 • How should people living with dementia be reviewed post diagnosis?



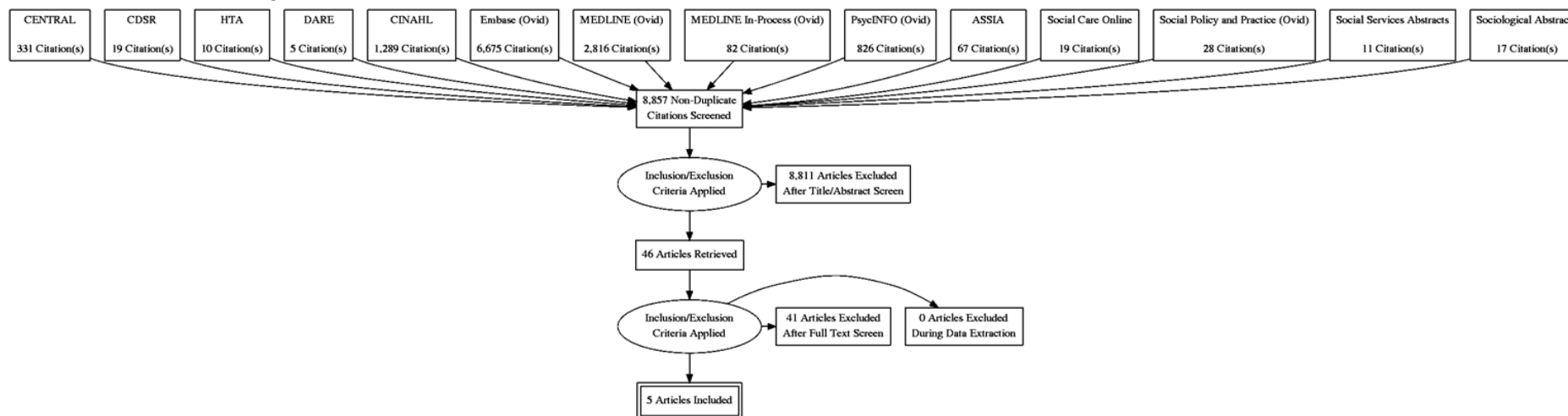
3

4

K.4.1 Inpatient care

K.4.1.2 Caring for people living with dementia who are admitted to hospital

- 3 • How should people living with dementia be cared for when admitted to hospital?



4

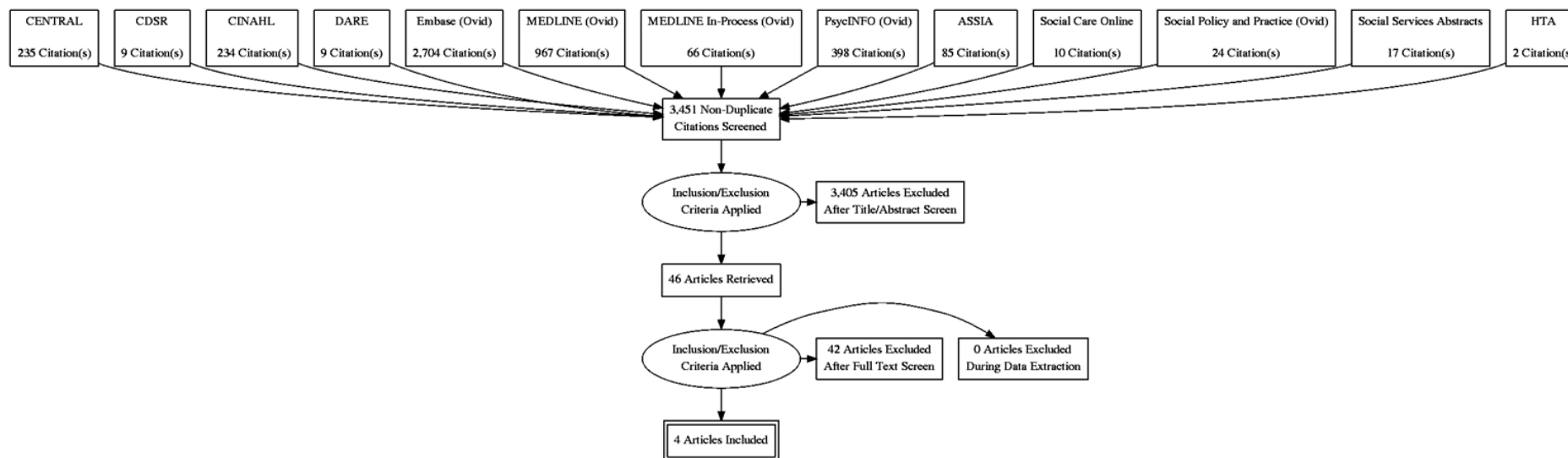
5

K.5.1 Care setting transitions

K.5.1.2 Managing the transition between different settings for people living with dementia

- 3 • What are the most effective ways of managing the transition between different settings (home, care home, hospital, and respite) for people
- 4 living with dementia?

5



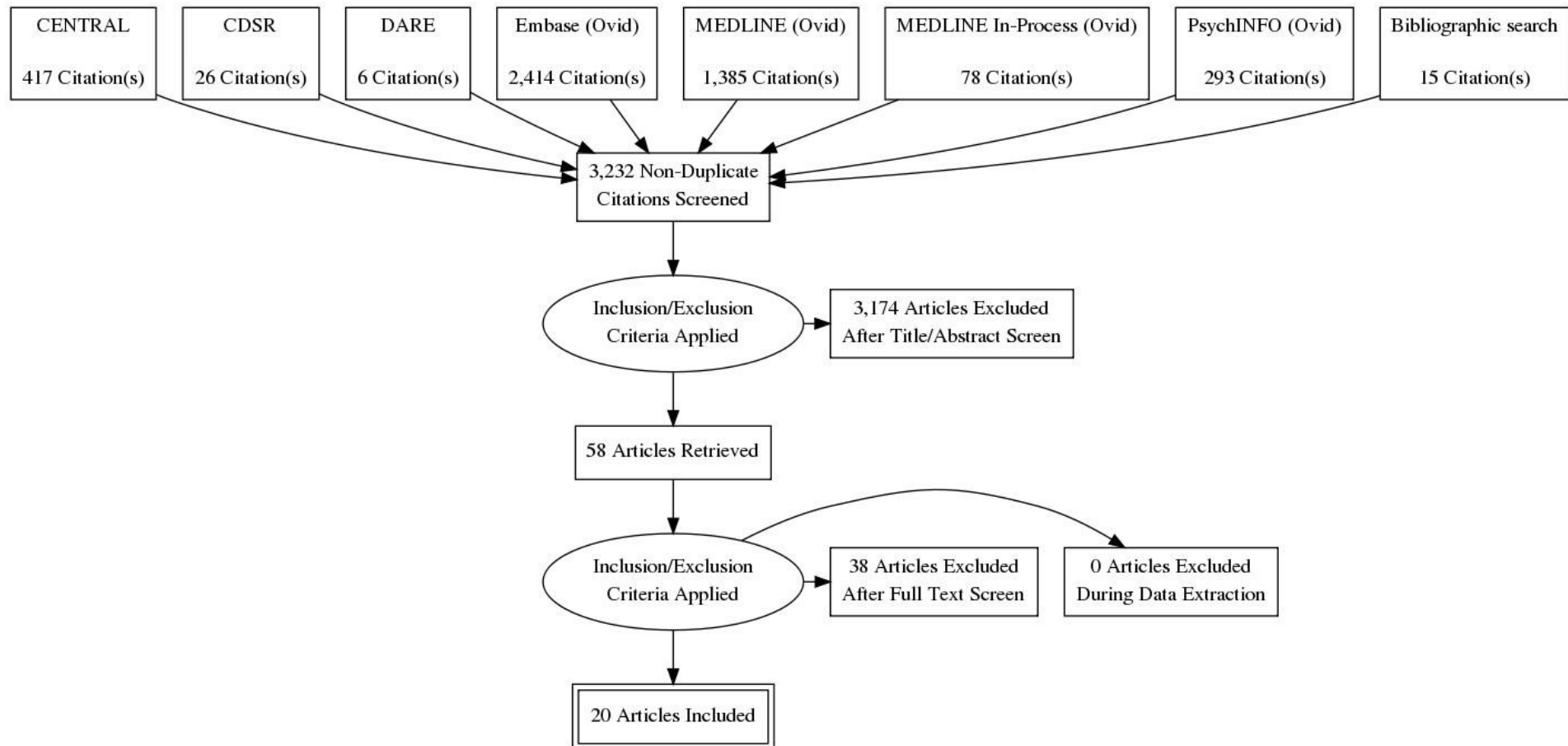
6

7

K.6₁ Modifying risk factors for dementia progression

K.6.12 Risk factors for dementia progression

- 3 • What effect does modifying risk factors have on slowing the progression of dementia?

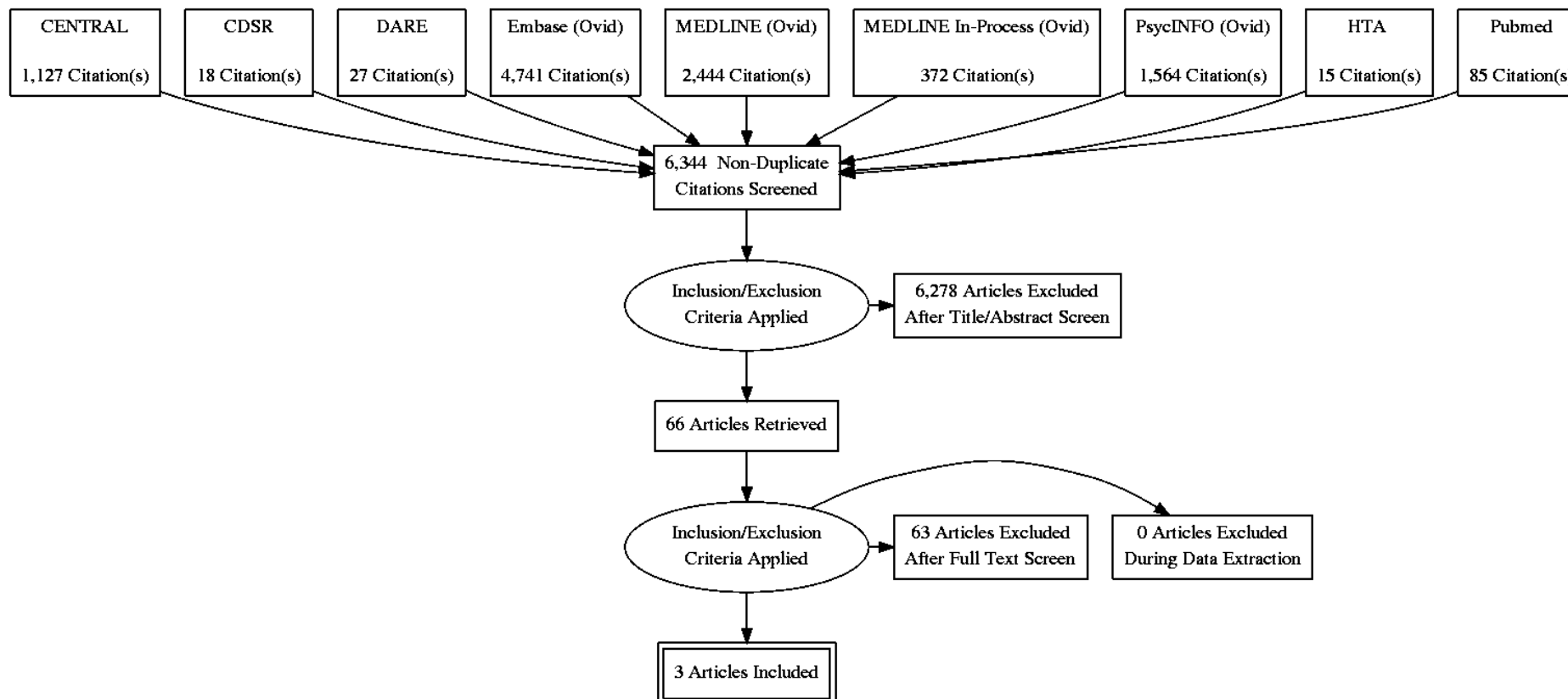


4

K.7.1 Cholinesterase inhibitors and memantine for dementia

K.7.1.2 Cholinesterase inhibitors and memantine for people living with Alzheimer's disease

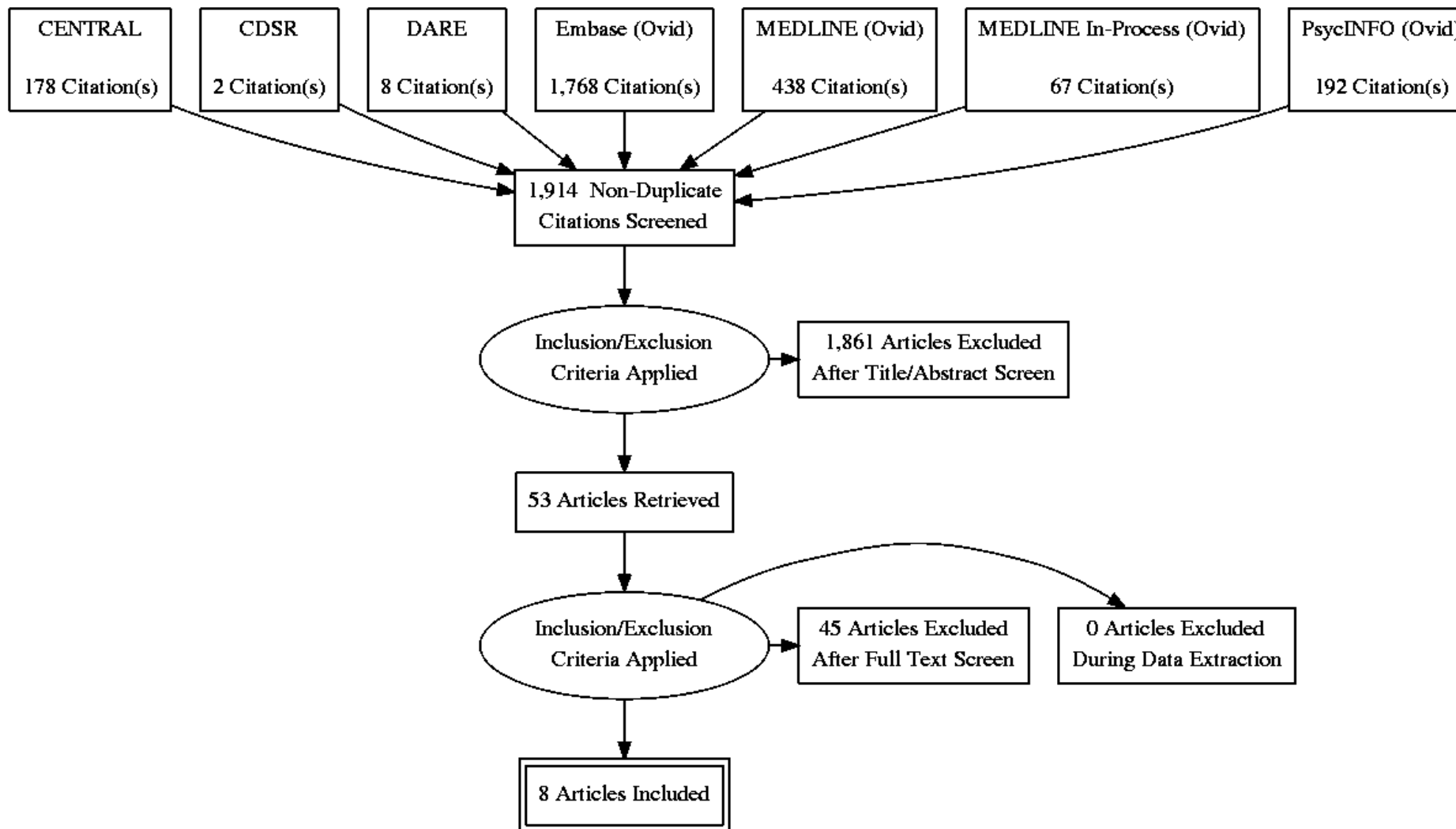
- 3 • Who should start and review the following pharmacological interventions: (donepezil, galantamine, rivastigmine, memantine) for people with
- 4 Alzheimer's disease and how should a review be carried out?



5
6

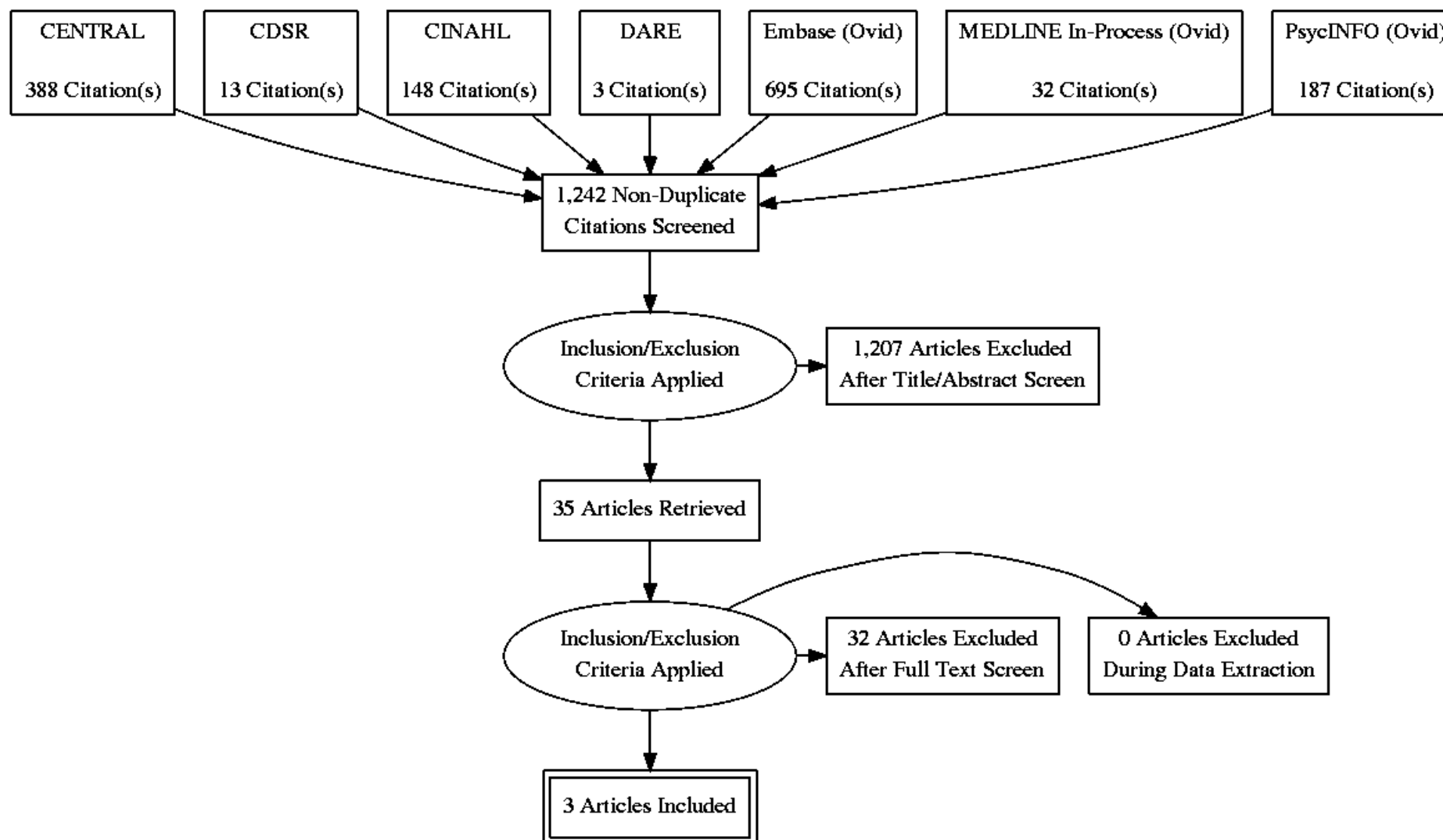
K.7.21 Cholinesterase inhibitors and memantine in Alzheimer's disease

- 2 • How effective is the co-prescription of cholinesterase inhibitors and memantine for the treatment of Alzheimer's disease?



3
4

- 1 • When should treatment with donepezil, galantamine, rivastigmine, memantine be withdrawn for people with Alzheimer's disease?

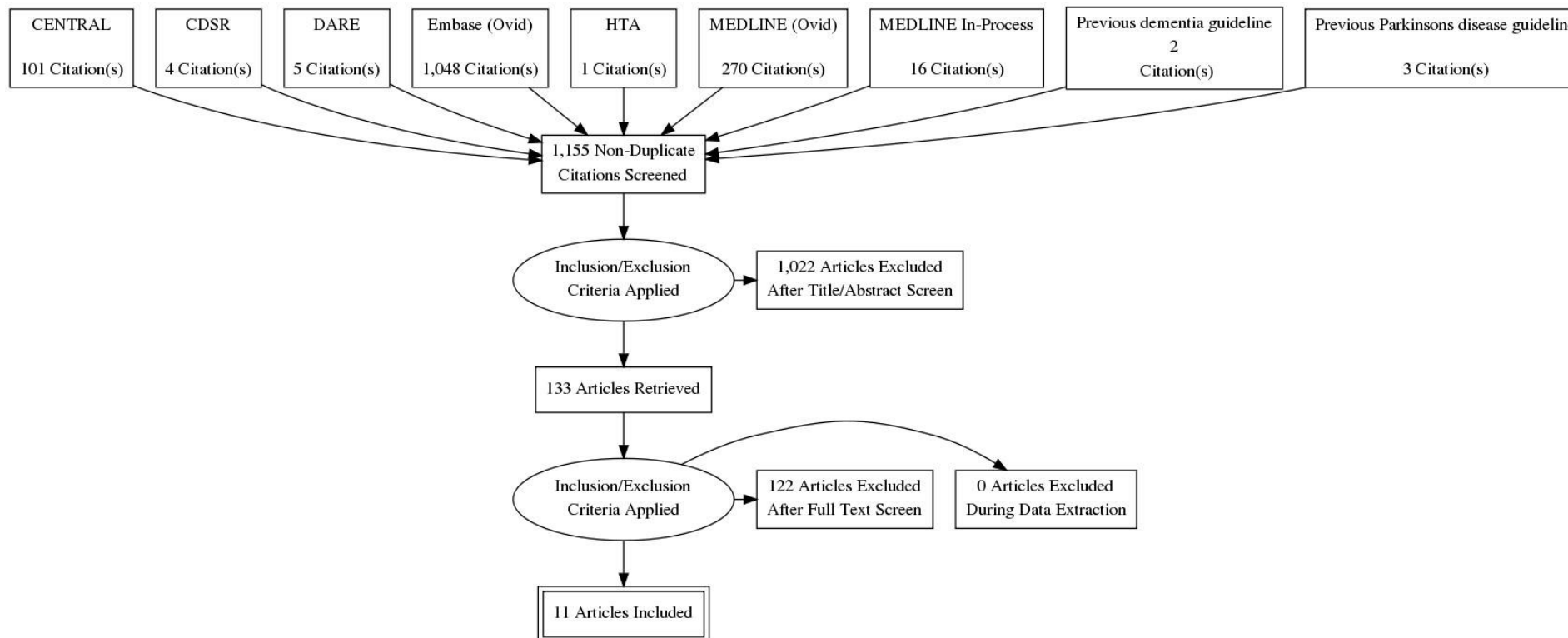


2

K.7.31 Pharmacological management of dementia with Lewy bodies

2 Review question

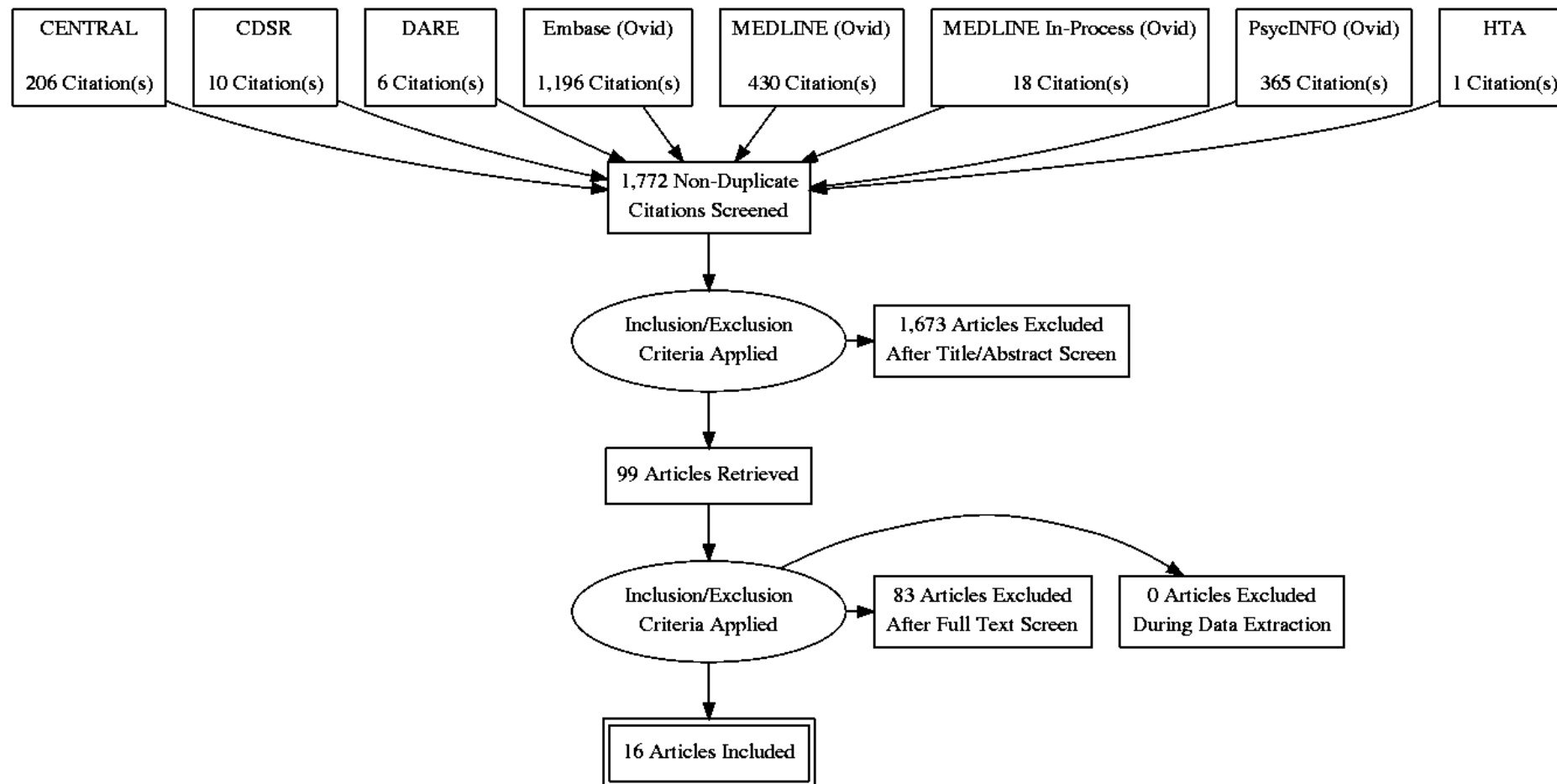
- 3 • What is the comparative effectiveness of donepezil, galantamine, memantine and rivastigmine for cognitive enhancement in dementia
- 4 associated with Parkinson's disease?



5
6

K.7.41 Cholinesterase inhibitors and memantine for types of dementia other than typical Alzheimer's disease

2 • How effective are cholinesterase inhibitors and memantine for types of dementia other than typical Alzheimer's disease?



3

K.8₁ Drugs that may worsen cognitive decline

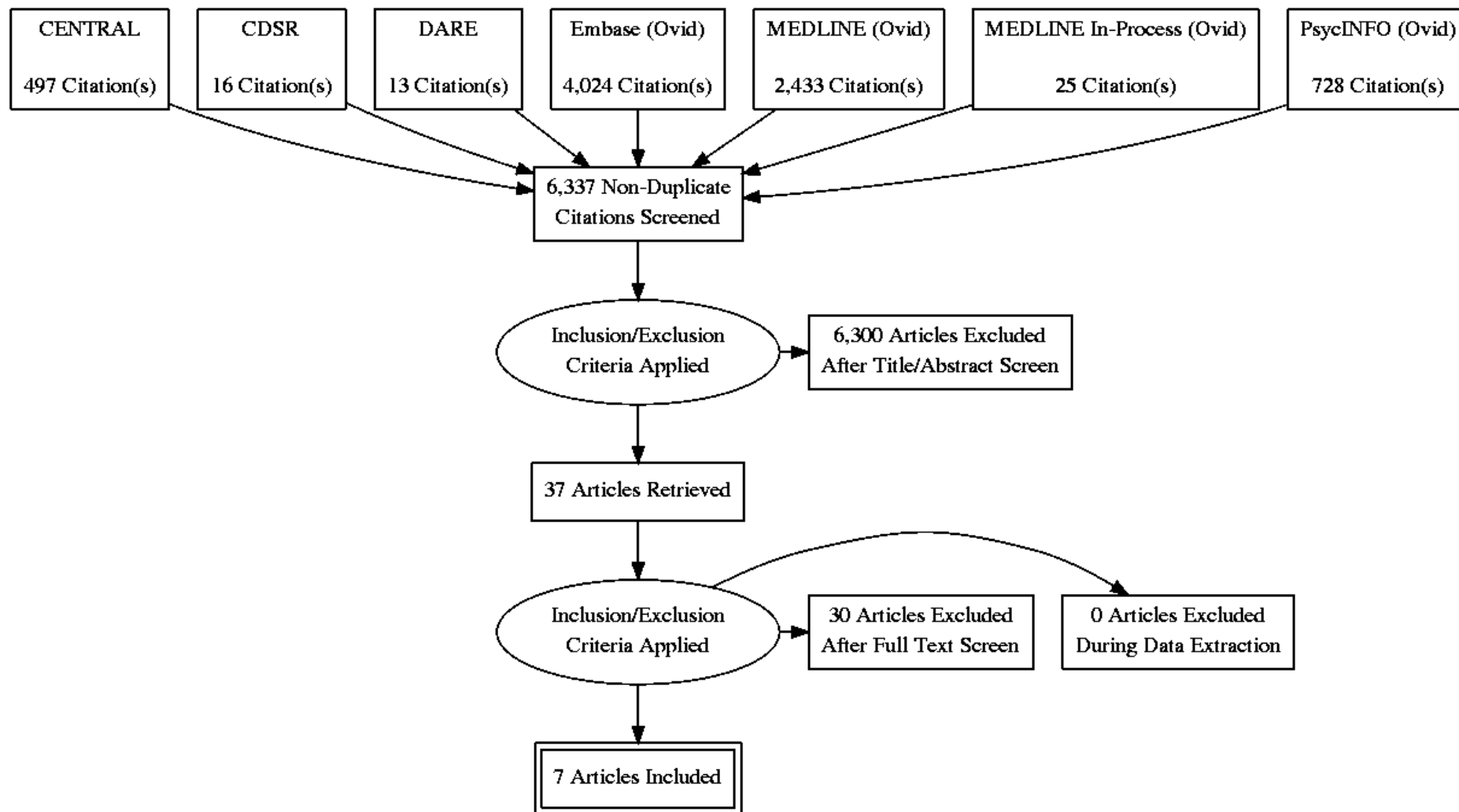
K.8.12 Drugs that may cause cognitive decline

3 • What drugs that may worsen cognitive decline are commonly prescribed in people diagnosed with dementia?

4 No search was carried out. See appendix N for the data provided by an expert witness for this review question.

5

- 1 • What are the most effective tools to identify whether drugs may be the cause of cognitive decline in someone suspected of having dementia?



2
3

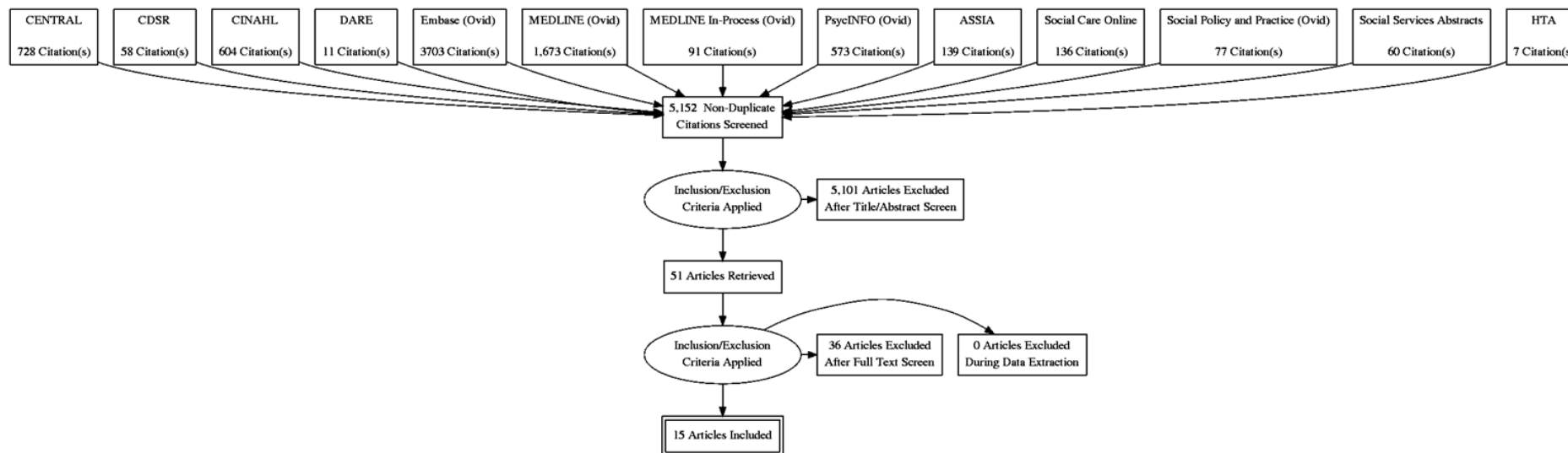
K.9.1 Non-pharmacological interventions for people living with dementia

K.9.12 Non-pharmacological interventions for people living with dementia

- 3 • What are the most effective non-pharmacological interventions for supporting cognitive functioning in people living with dementia?
- 4 • What are the most effective non-pharmacological interventions for supporting functional ability in people living with dementia?
- 5 • What are the most effective non-pharmacological interventions to support wellbeing in people living with dementia?
- 6 See Appendix O for details

K.9.27 Supporting independence in people living with dementia

- 8 • What are the most effective methods of supporting people living with dementia to reduce harm and stay independent?



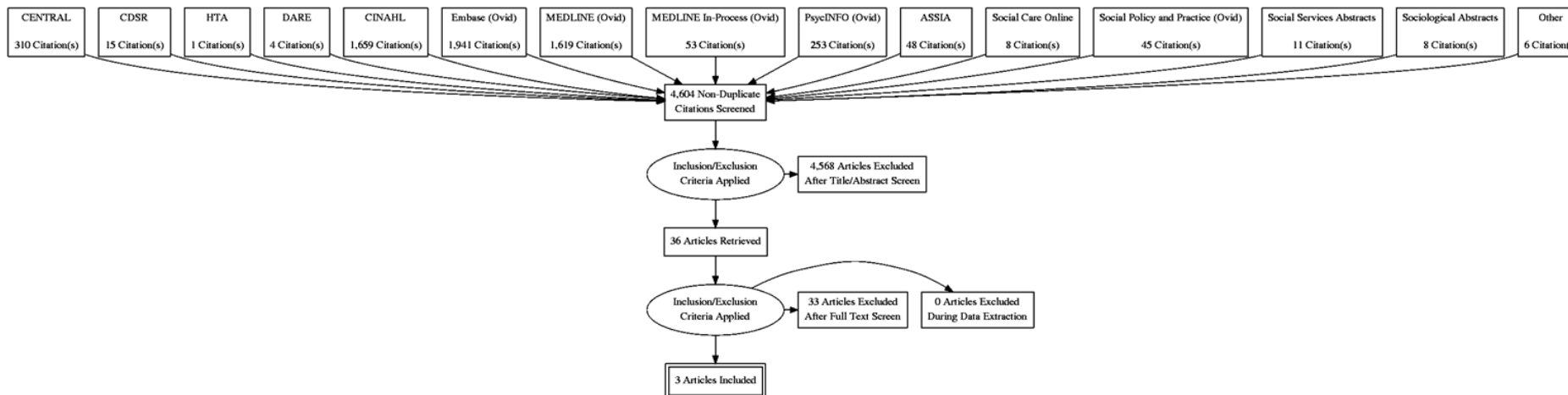
9

10

K.9.31 Pre, peri and post-diagnostic counselling and support for people living with dementia and their families

- 2 • How effective are pre, peri & post-diagnostic counselling and support on outcomes for people living with dementia and their families?

3



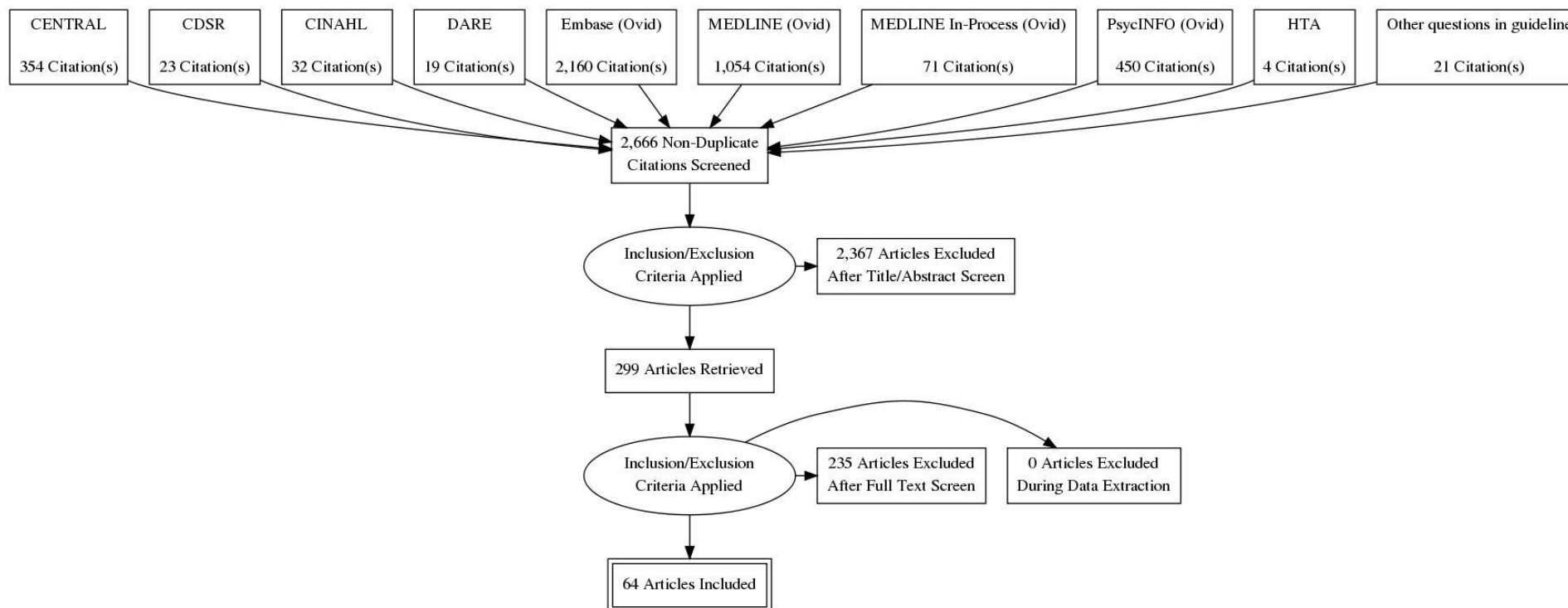
4

5

K.10₁ Managing non-cognitive symptoms

K.10.12 Interventions for treating illness emergent non-cognitive symptoms in people living with dementia

- 3 • What are the most effective pharmacological interventions for managing illness emergent non-cognitive symptoms, such as psychosis,
- 4 depression, behavioural changes in people living with dementia?
- 5 • What are the most effective non-pharmacological interventions for managing illness emergent non-cognitive symptoms, such as psychosis,
- 6 depression, behavioural changes in people living with dementia?

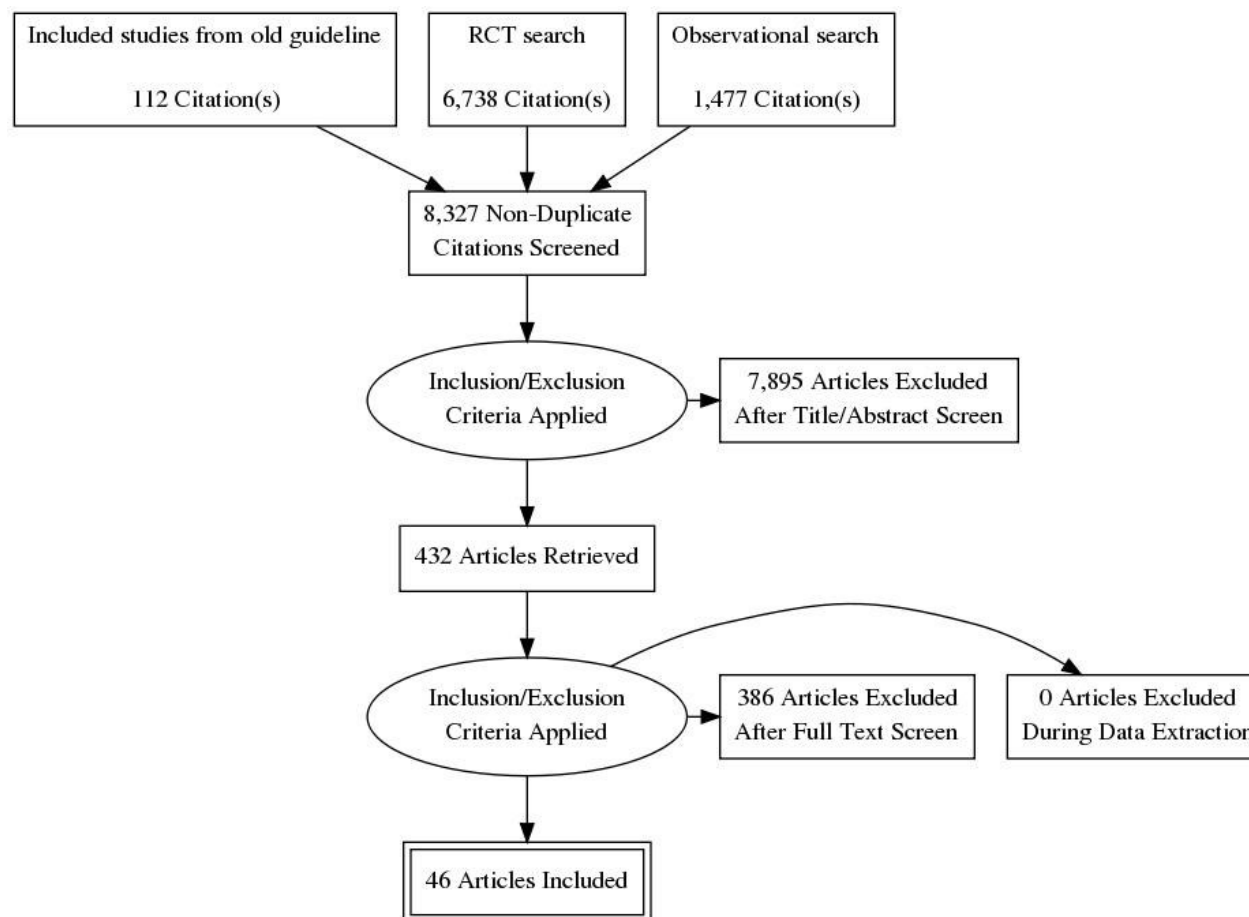


7

K.11 Supporting informal carers

K.11.12 Supporting informal carers of people living with dementia

- 3 • How effective are carers' assessments in identifying the needs of informal carers of people living with dementia?
- 4 • What interventions/services are most effective for supporting the wellbeing of informal carers of people living with dementia?

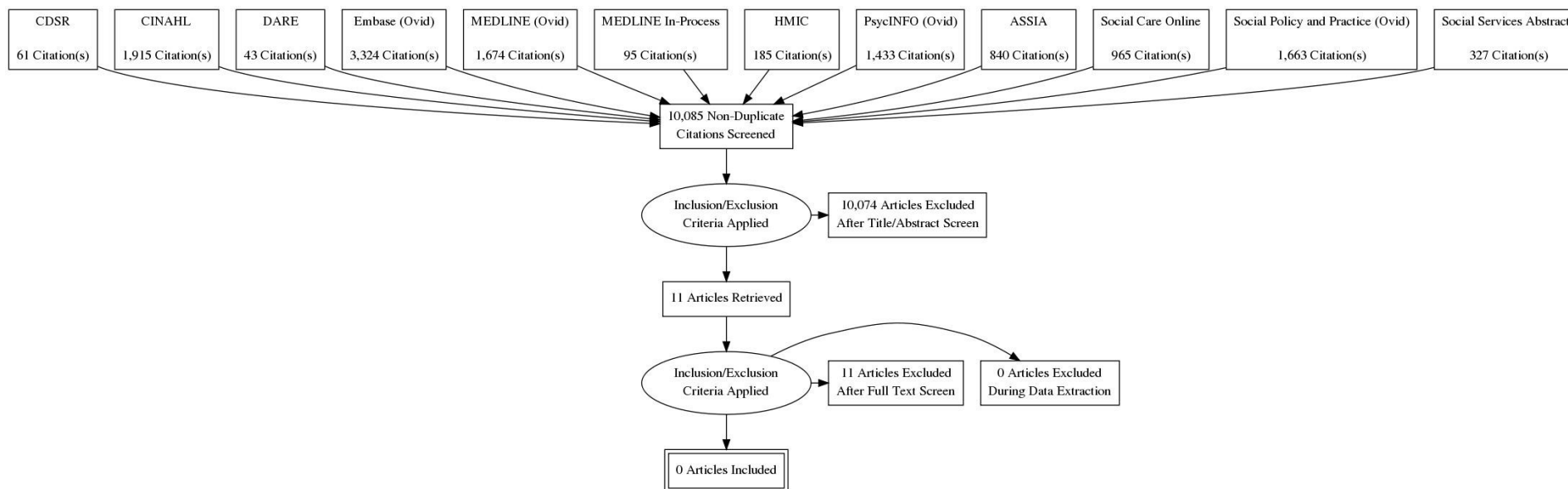


K.12.1 Staff training

K.12.1.2 Staff training

- 3 • What effect does training for staff working with people living with dementia have upon the experiences of people living with dementia in their
4 care?

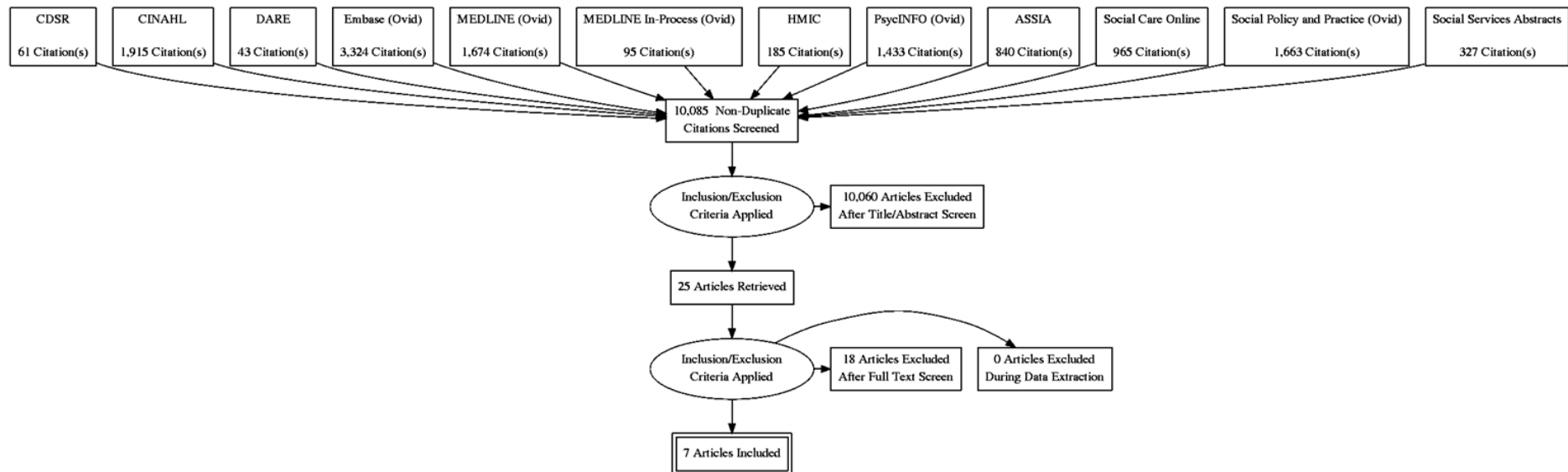
K.12.1.15 Qualitative search



K.13₁ Needs of younger people living with dementia

K.13.12 The specific needs of younger people living with dementia

- 3 • What are the specific needs of younger people living with dementia?



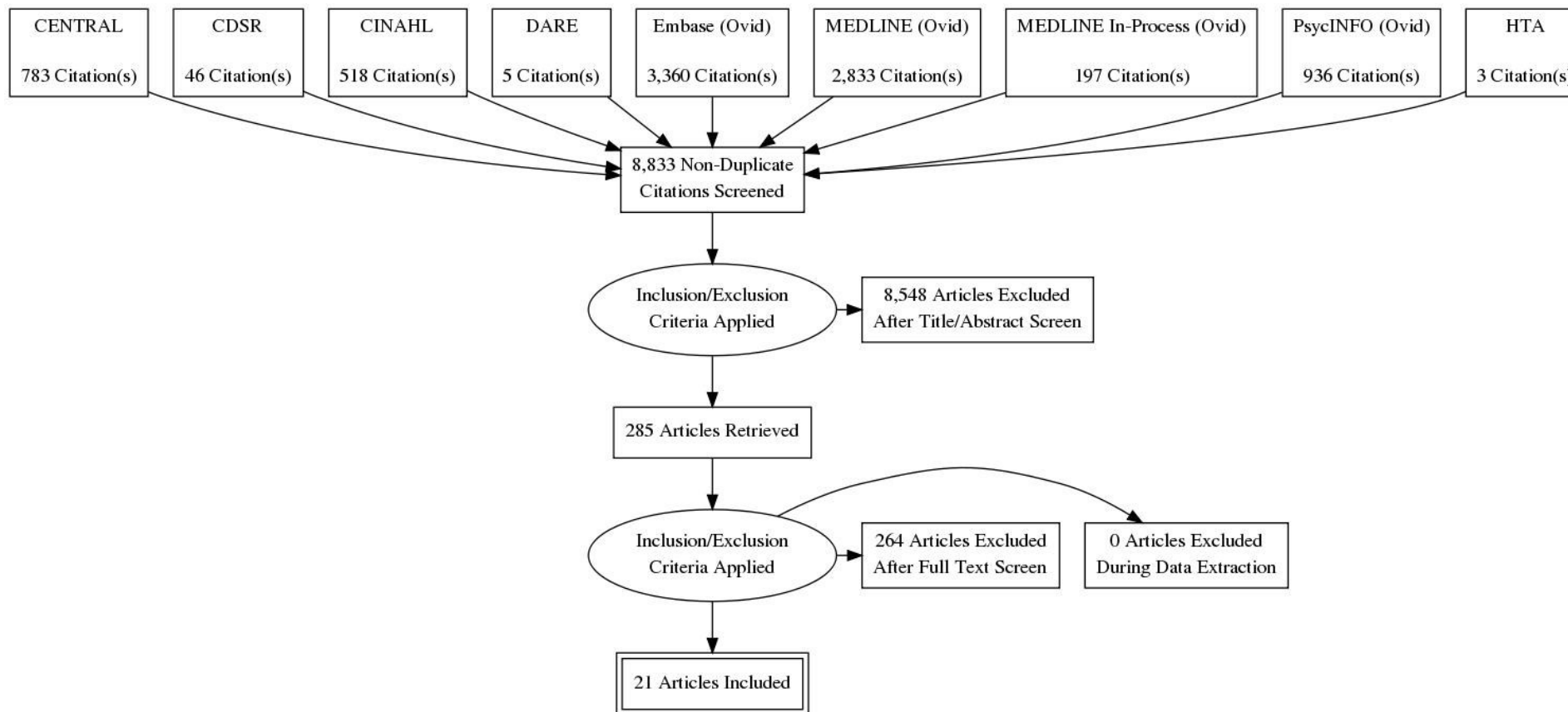
4

5

K.14.1 Assessing and managing comorbidities

K.14.1.2 Assessing and treating intercurrent illness in people living with dementia

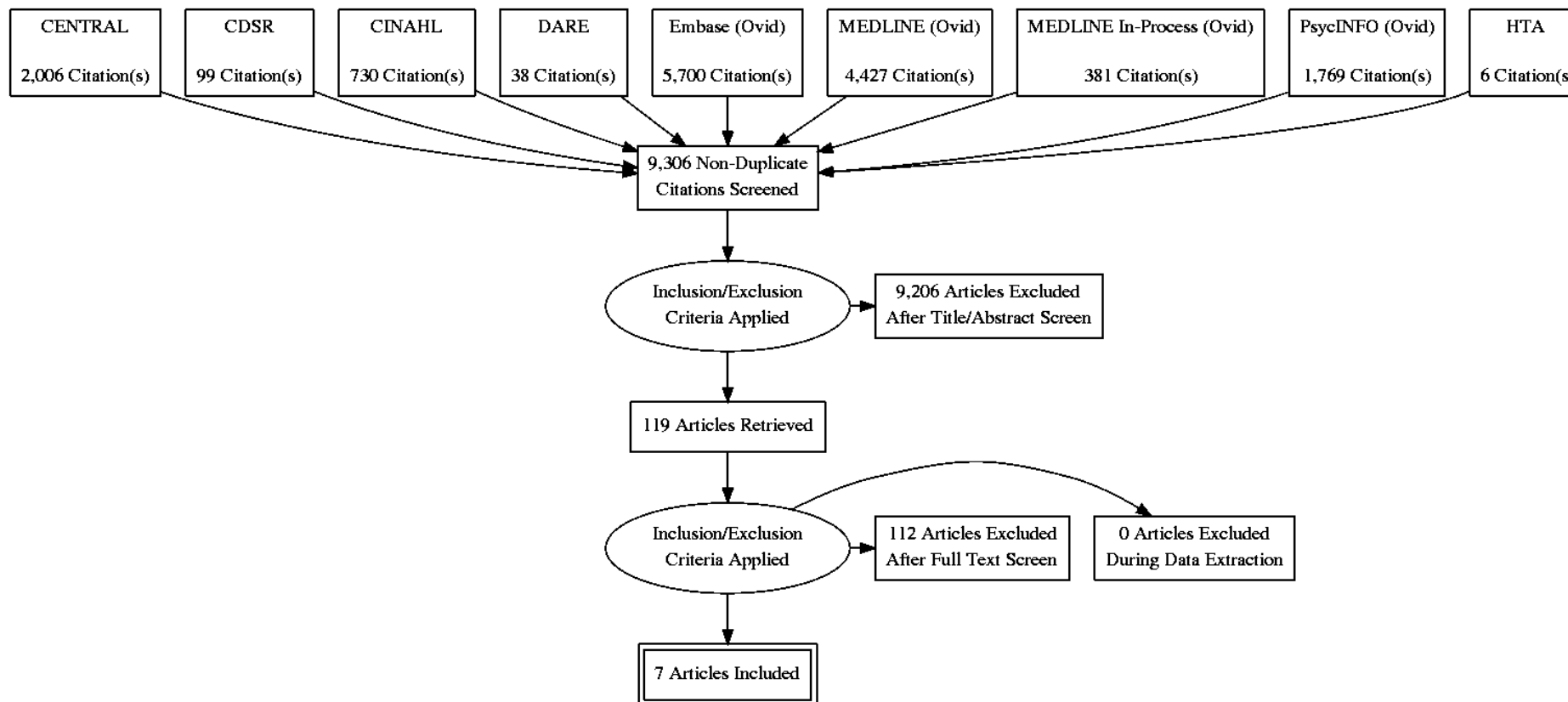
- 3 • Are there effective methods for assessing intercurrent illness in people living with dementia that are different from those already in use for people
- 4 who do not have dementia?
- 5 • Are there effective methods for treating intercurrent illness in people living with dementia that are different from those already in use for people
- 6 who do not have dementia?



7

K.14.21 Management strategies for people living with dementia and co-existing physical long term conditions

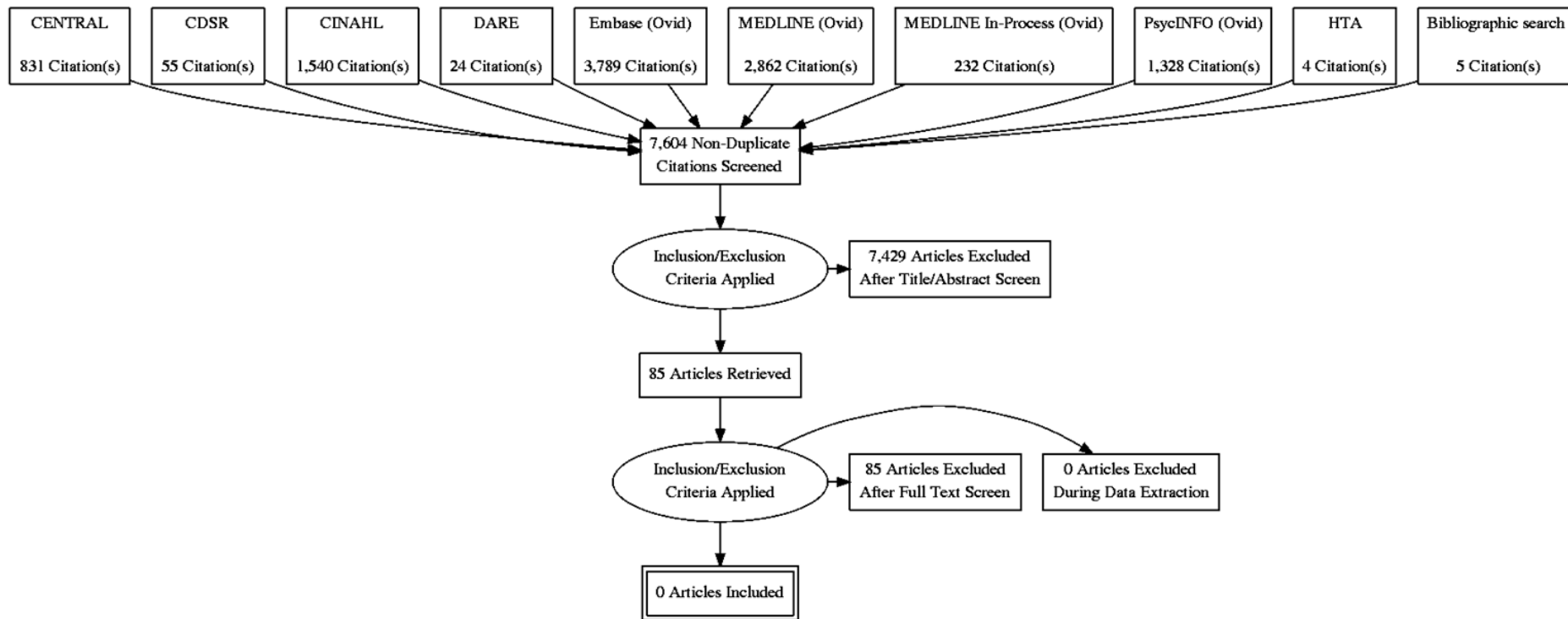
- 2 • What are the optimal management strategies (including treatments) for people living with dementia with co-existing physical long term
3 conditions?



4
5

K.14.31 Managing mental health conditions alongside dementia

- 2 • What are the optimal management strategies (including treatments) for people with dementia and an enduring mental health condition?



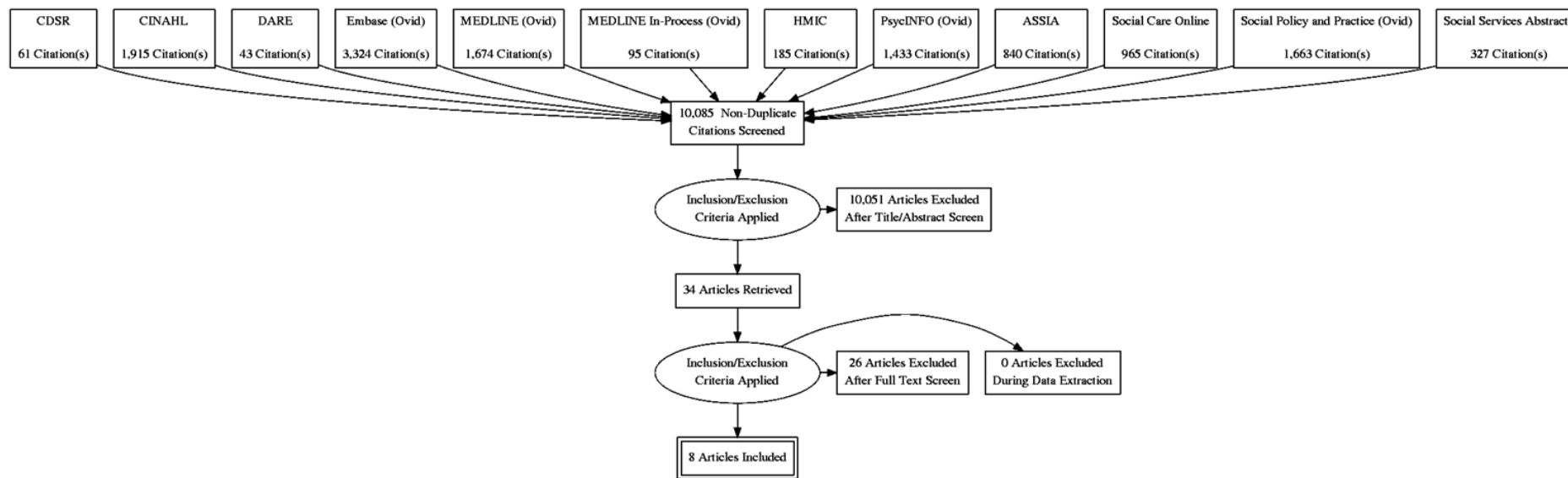
3
4

K.15.1 Palliative care: care towards and at the end of life

K.15.1.2 Palliative care

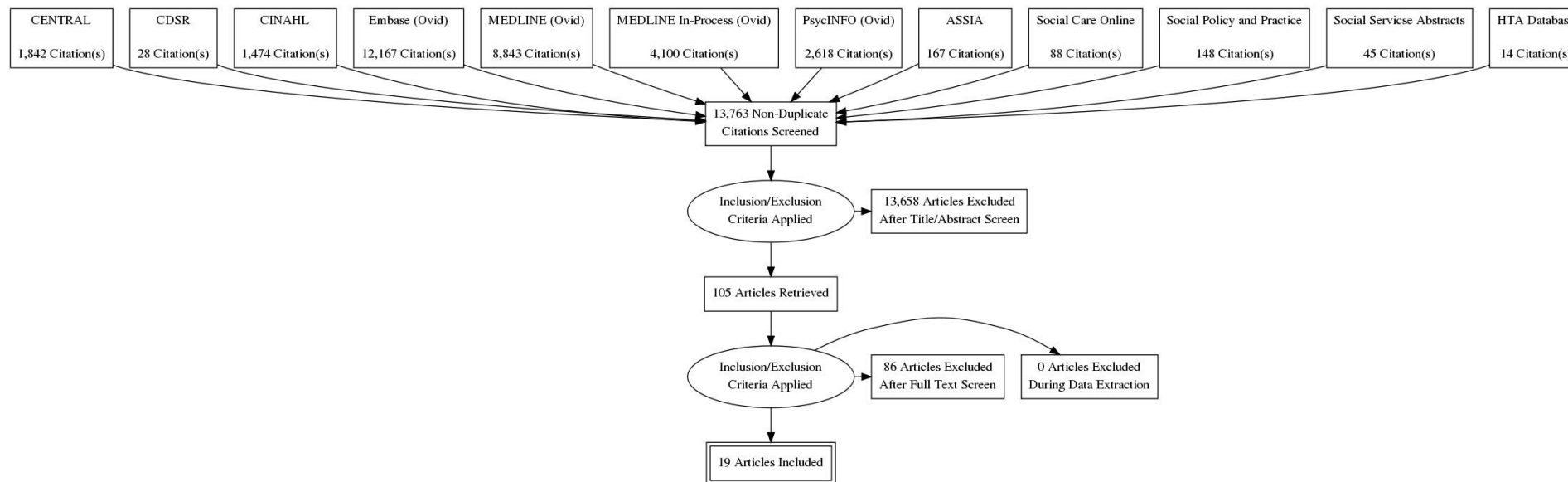
- 3 • What models of palliative care are effective for people with dementia?

K.15.1.1.4 Qualitative search



5
6
7

K.16₁ Rerun searches



2