



An introduction to NICE

Andrew Dillon

Stockport 17 July 2013



Our public health guidance is helping to deal with some of the nation's biggest challenges, including obesity, alcohol, tobacco, poor diet and lack of exercise

Healthy lives, healthy people: promoting good health

Our public health guidance promotes activities and strategies that can help prevent disease, improve health and reduce health inequalities

[Read more about our public health guidance](#)

[Support for local government: public health briefings](#)

[Tobacco control return on investment tool for local government](#)



With our new responsibility for providing practice guidance and Quality Standards for social care, we can help deliver better, more integrated services

Driving up the quality of adult and children's care

NICE's new role in producing social care guidance and quality standards will promote better integration of health and social care.

[Read more about our new role](#)

[Register your organisation as a stakeholder for NICE social care guidance](#)



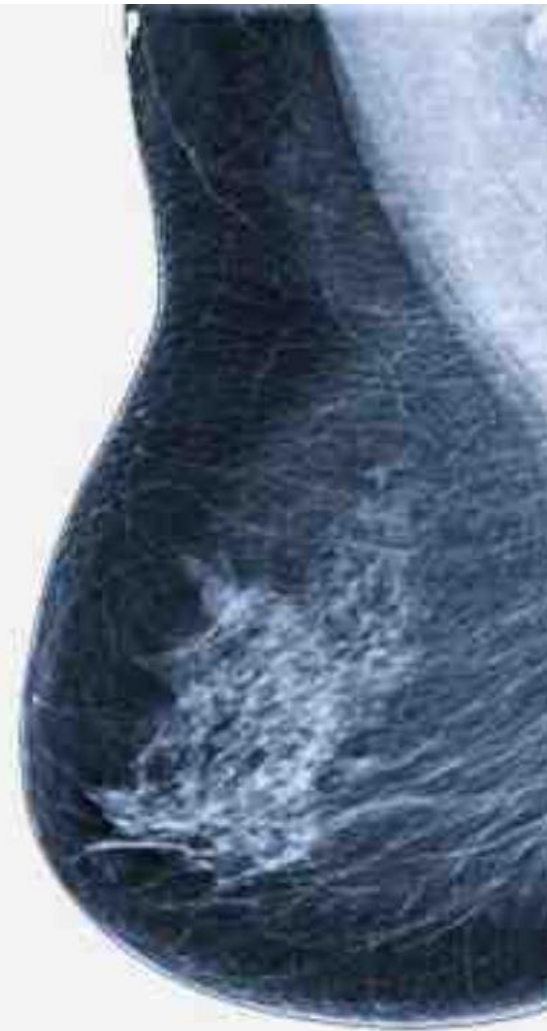
Our Quality Standards and the clinical guidelines that support them describe the standard of care the NHS should offer

New familial breast cancer guidance from NICE

[View the guideline](#)

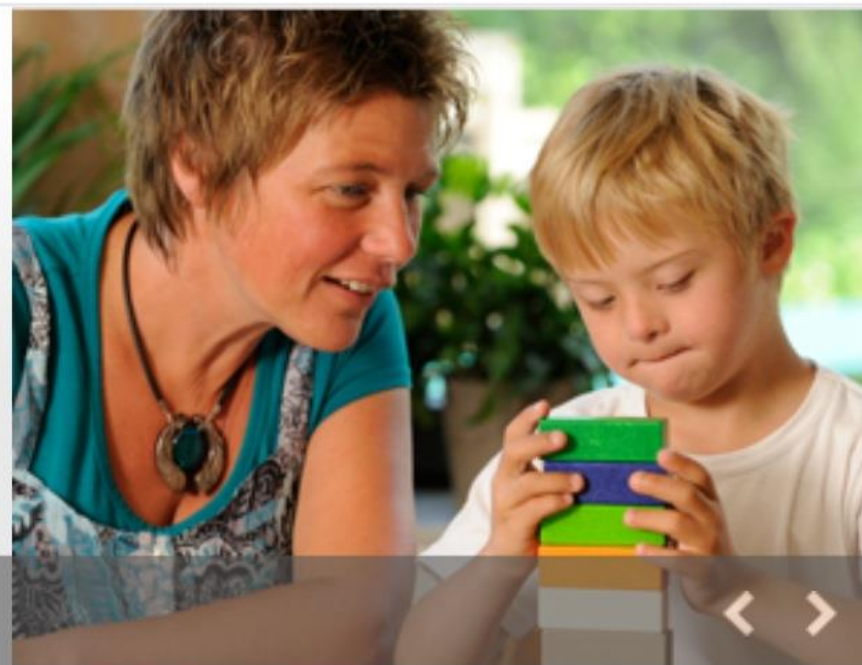
[See the Pathway](#)

[Read the news summary and hear Professor Gareth Evans, member of the guideline development group](#)



We make it easy for users, carers and professionals to access our guidance through NICE Pathways

NICE Pathways provides a useful starting point for new users to a topic, whilst giving specialists easy access to updated recommendations



We have the most comprehensive source of advice on the best way to use medicines

Download the free NICE Guidance and BNF apps

Download the [NICE Guidance app](#) for our latest guidance and quality standards.

The [BNF](#) and [BNF for Children \(BNFC\)](#) apps are available for health and social care professionals who work for, or are contracted by, the NHS in England, Scotland and Wales. Log in with your Athens username for instant access to up-to-date prescribing information from the BNF.



Our evidence search engine can help
improve outcomes for people using
the health and social care services

NICE National Institute for
Health and Care Excellence

NICE welcomes new users from the former
National electronic Library for Medicines
(NeLM). [Click Here for Information](#)

Evidence Search
Health and Social Care

Anything you need to know about health and social care?



We know that putting our guidance into practice is sometimes challenging. We've got advice and support to help make it easy as possible.

Your one-stop how-to guide

If you're responsible for ensuring your organisation is implementing NICE's recommendations, you need our new *Into Practice* guide - a source of practical support for health and social care professionals and managers.

[View the into practice guide](#)



We make genuine efforts to find out what users, carers and professionals think our guidance should say.



National Institute for
Health and Clinical Excellence

-Search Review Here-

GO

Annual Review 2012/2013



About NICE

- > Foreword
- > Annual accounts
- > Communications
- > Pathways

Promoting best practice

- > Clinical guidelines
- > Public health
- > Social care
- > Quality standards
- > Quality indicators

Encouraging uptake

- > Technology appraisals
- > Interventional procedures
- > Medical technologies
- > Diagnostics
- > Guidance into practice
- > Local support

Advice and support

- > Scientific advice
- > QIPP
- > NHS Evidence
- > Medicines Prescribing Centre
- > British National Formulary
- > NICE Accreditation
- > NICE International

People

- > Public involvement
- > Citizens Council
- > Fellows and Scholars
- > Student Champions

Happy to take your questions!

Got a question for NICE

NICE Question Time is taking place in Stockport on 17 July 2013.

[Book your place today](#) for your chance to put questions to NICE's Chief Executive and Chair.

NICE Question Time is followed by NICE's Annual General Meeting, which is also open to the public

