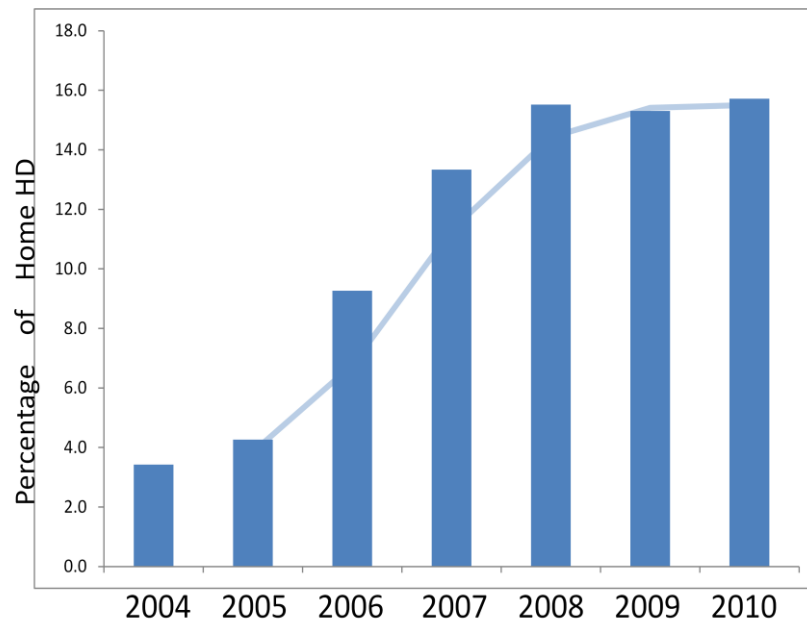


References

1. Department of Health - Donal O'Donoghue' Letter (2007) Available at: <http://www.isb.nhs.uk/docs/C-Dialysis.pdf> [Accessed 15 September 2010]
2. Economic Report – Home Haemodialysis (2010) Available at: http://www.quantafs.com/img/uploads/files/documents/CEP10063_%20economic%20report_home%20haemodialysis.pdf [Accessed 12 September 2010]
3. Improving choice for kidney patients (2010) Available at: http://www.kidneycare.nhs.uk/Library/ImprovingChoiceforKidneyPatients_HomeHaemodialysis_Report_Feb2010.pdf [Accessed 15 September 2010]
4. Anonymous. Guidance on home compared with hospital haemodialysis for patients with end-stage renal failure. Technology Appraisal Guideline No 48. Downloadable from http://www.nice.org.uk/nicemedia/pdf/HvH_full_guidance.pdf. London: National Institute for health and Clinical Excellence; 2002.
5. Department of Health. National Service Framework for Kidney Disease. London: HMSO; 2004
6. National Institute for Health and Clinical Excellence (2008) Available at: <http://www.nice.org.uk/nicemedia/pdf/CG073NICEGuideline.pdf> [Accessed 3 August 2010]
7. Renal Registry (2009) Available at: <http://www.renalreg.com/Reports/2009.html> [Accessed 10 August 2010]
8. The burden of chronic kidney disease (2006) Available at: <http://www.bmj.com/cgi/content/full/332/7541/563> [Accessed 12 August 2010]
9. UK National Kidney Federation - Chronic Kidney Disease (2010) Available at: <http://www.kidney.org.uk/Medical-Info/ckd-info/index.html#treatment> [Accessed 15 July 2010]
10. Improving Choice for Kidney Patients :Home Therapies North West Renal Network : NHS Kidney care Report version 3.1 June 2010
11. First Stage Specialised Commissioning QIPP Plans (Neurosciences, Kidney Care and Secure Services) Jenny Scott, Director of Specialised Commissioning July 2010
12. Sandip Mitra. What works : the patient experience of Home haemodialysis British Journal of Renal Medicine 2009; Vol14 No1 Supplement
13. Eknoyan G, et L Effect of dialysis dose and membrane flux in maintenance hemodialysis.Hemodialysis (HEMO) Study Group.N Engl J Med. 2002 Dec 19;347(25):2010-9
14. Chertow GM, FHN Trial Group et al In-center hemodialysis six times per week versus three times per week. N Engl J Med. 2010 Dec 9;363(24):2287-300. Epub 2010 Nov 20.

Fig 1 Percentage of Home HD (all dialysis) patients with trendline since 2004



Renal Unit	% of prevalent dialysis patients on Home HD on 31/13/2007	% of prevalent dialysis patients on Home HD on 31/13/2008
Manchester	8.6	11.4
Brighton	5.5	5.7
Sheffield	5.2	5.7
Guys	5.1	5.1
Bristol	5.5	5.0
Preston	3.6	4.6
Derby	3.6	3.8
Birmingham Heartlands	3.6	3.2
Oxford	4.1	3.5
Hull	2.8	3.3
Newcastle	2.6	3.1
Liverpool Aintree	1.7	3.1

Fig 2 Prevalence figures published in UK Renal Registry showing only Manchester Centre Home HD prevalence >10% HHD

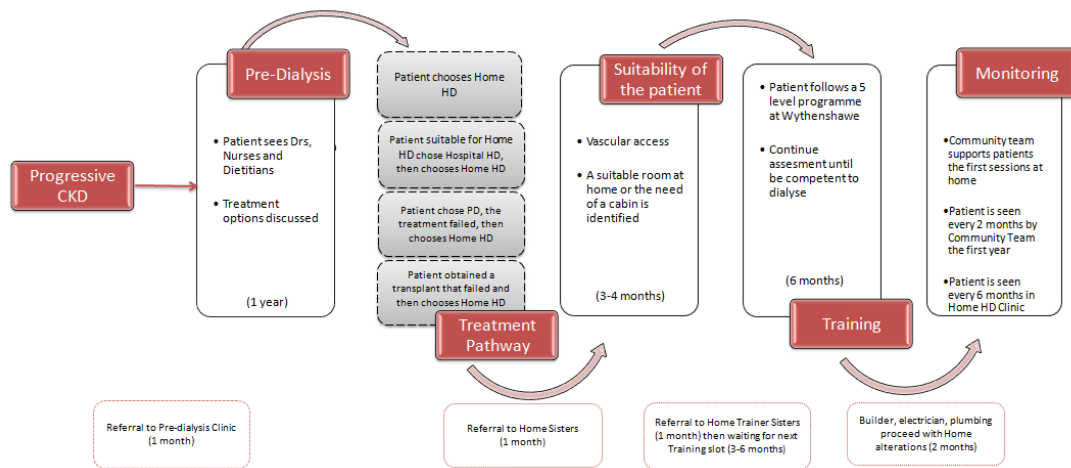
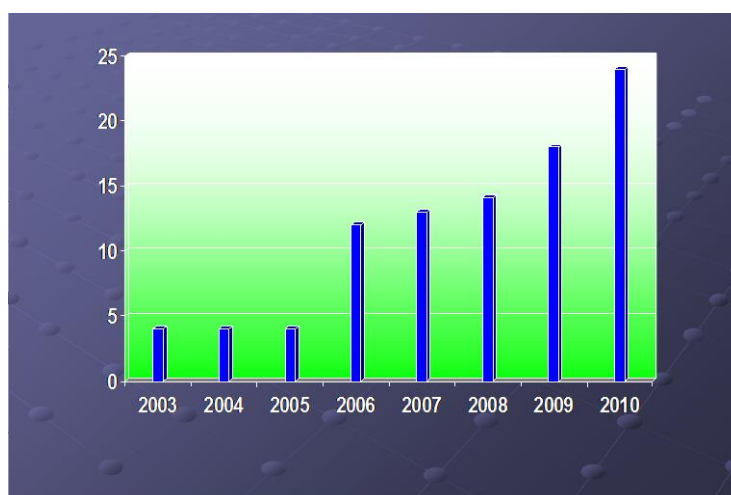


Fig 3 Patient pathway model (Manchester) offering HHD option to all patients

Fig 4 Increase adoption of HHD in patients for those approaching dialysis
Patients nos. demonstrate informed patient choice and interest in self care



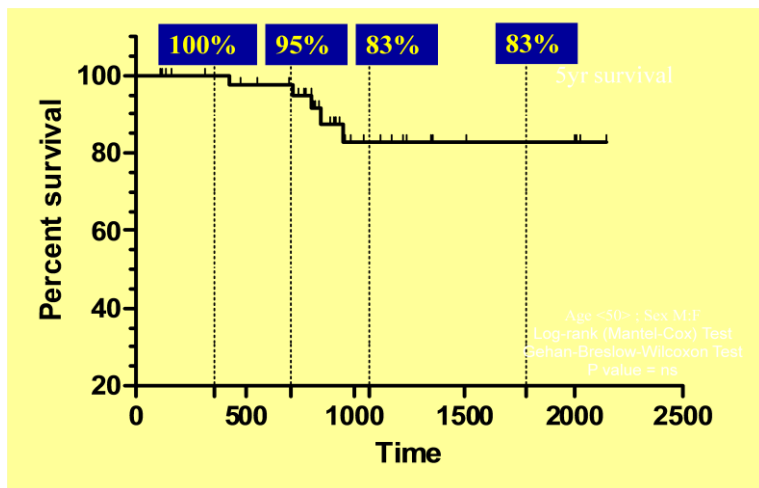


Fig 5 HHD Survival (1,2,3,5 yr) censored for transplantation (unadjusted)

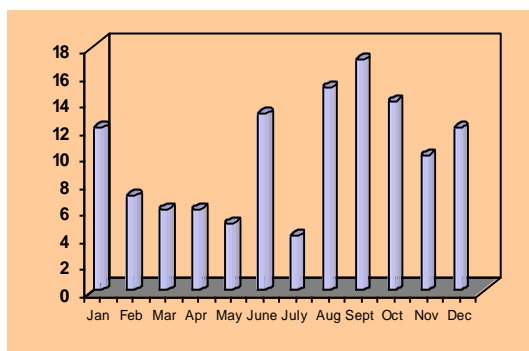


Fig 6 In centre support- Technical helpline 24/7, Total calls 144 (Aug 07- Aug 08)

Table 1 Clinical outcome parameters A

<u>Parameter</u>	<u>Mean + stdev</u>
Time hrs	4.63 \pm 1.39
Qb ml/min	300 \pm 73
Qd ml/min	555 \pm 113
Hrs per week	14.7 \pm 3.41
Frequency	3-6 sessions/wk
Dry weight (kg)	74 \pm 20
BP systolic mmHg	133.8 \pm 19.9
BP diastolic mmHg	77.5 \pm 11
No AH drugs	40%
BP meds	0.87 \pm 1.0

Table 2 Clinical outcome parameters B

<u>Parameter</u>	<u>Mean + stdev</u>
Hb g/dl	11.7 \pm 1.7
PO4 mmol/l	1.37 \pm 0.27
Ca mmol/l	2.35 \pm 0.2
Albumin g/dl	42 \pm 7.3
IDWG (litres)	1.1 \pm 0.84
Conductivity ms/cm	136 \pm 2.5
spKt/V [3]	1.56 \pm 0.50
URR clearance %	71.3 \pm 13.5

	Home Dialysis	In Centre - MRI dialysis	In Centre - Satellite dialysis
Cost Type I	18,904	32,233	37,716
Cost Type II	26,289	40,145	45,629

Table 3: Projected costs ££s per patient per year by modality in 2011

Table 4 Patient quotes following transition to Flexible Home Haemodialysis

“When I was faced with hospital dialysis, I lost a lot of self esteem, felt low and lost interest in a lot of things – it was like a downward spiral. Home dialysis has suddenly made me feel more interested, happier and relaxed.” HP

“I was determined to avoid hospital and get onto home dialysis before I got too ill.” BR

“When you are on a transplant waiting list, you do not know when it is going to happen but being at home meant that life will not stop.” HP

The motivations for short daily dialysis, are, *“A better quality of life, being able to spend more quality time with family and friends, knowing that the chemical levels more balanced and that I would be healthier if I got the option of transplant, hopefully resulting in a better outcome.”* CH

“I felt happier on home haemodialysis, in control and responsible for my own health. It gives you greater freedom, a more relaxed life and becomes a part of daily routine. Rewards are greater and far outweigh any apprehension or concerns.” HP